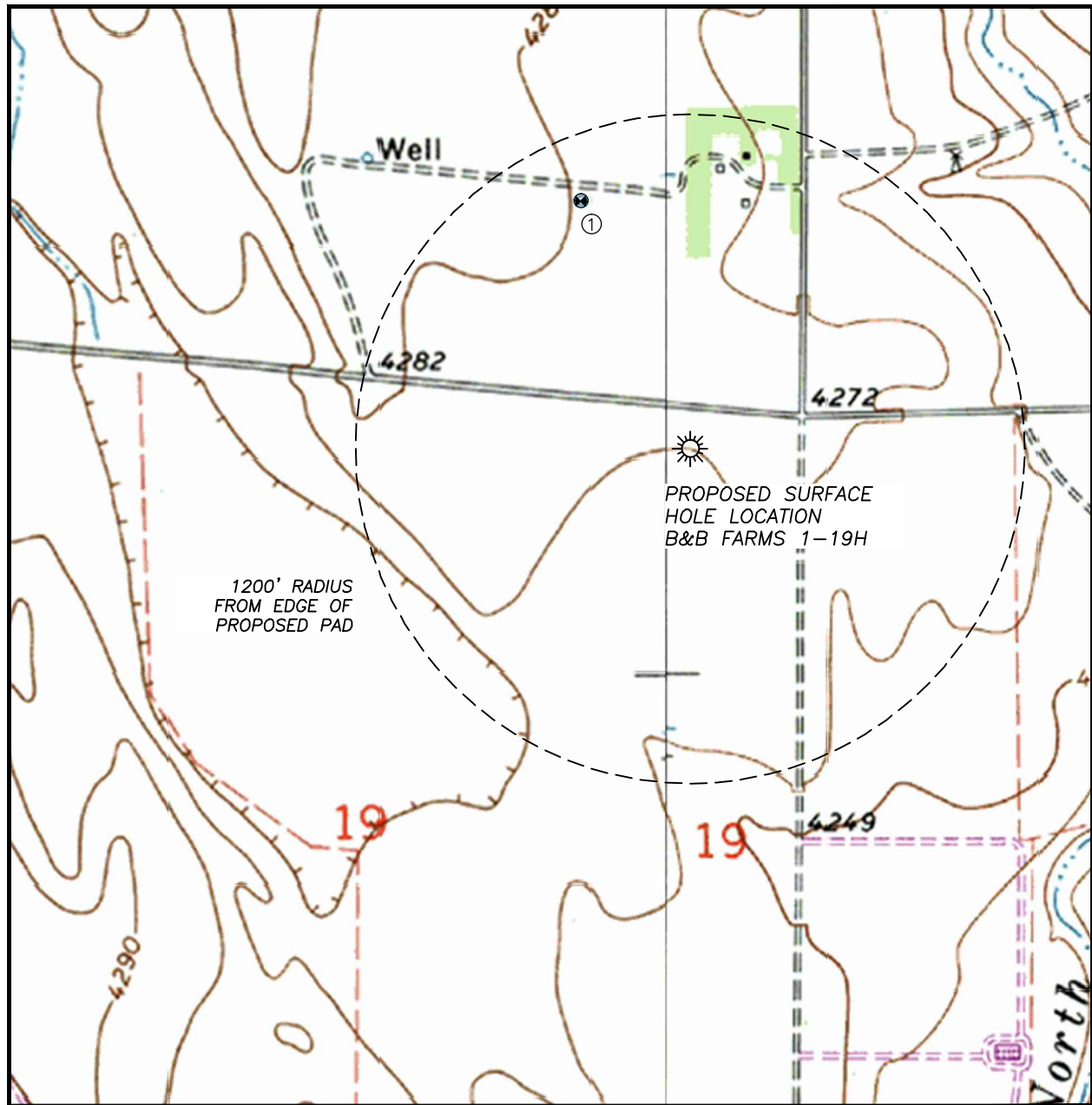


HYDROLOGY MAP B&B FARMS 1-19H

SECTION 19, TOWNSHIP 11 SOUTH, RANGE 44 WEST OF THE 6TH PRINCIPAL MERIDIAN



SURFACE WATER

1. IRRIG WELL: 1766'±, N22°W
LOCATION FROM COGCC DATABASE

