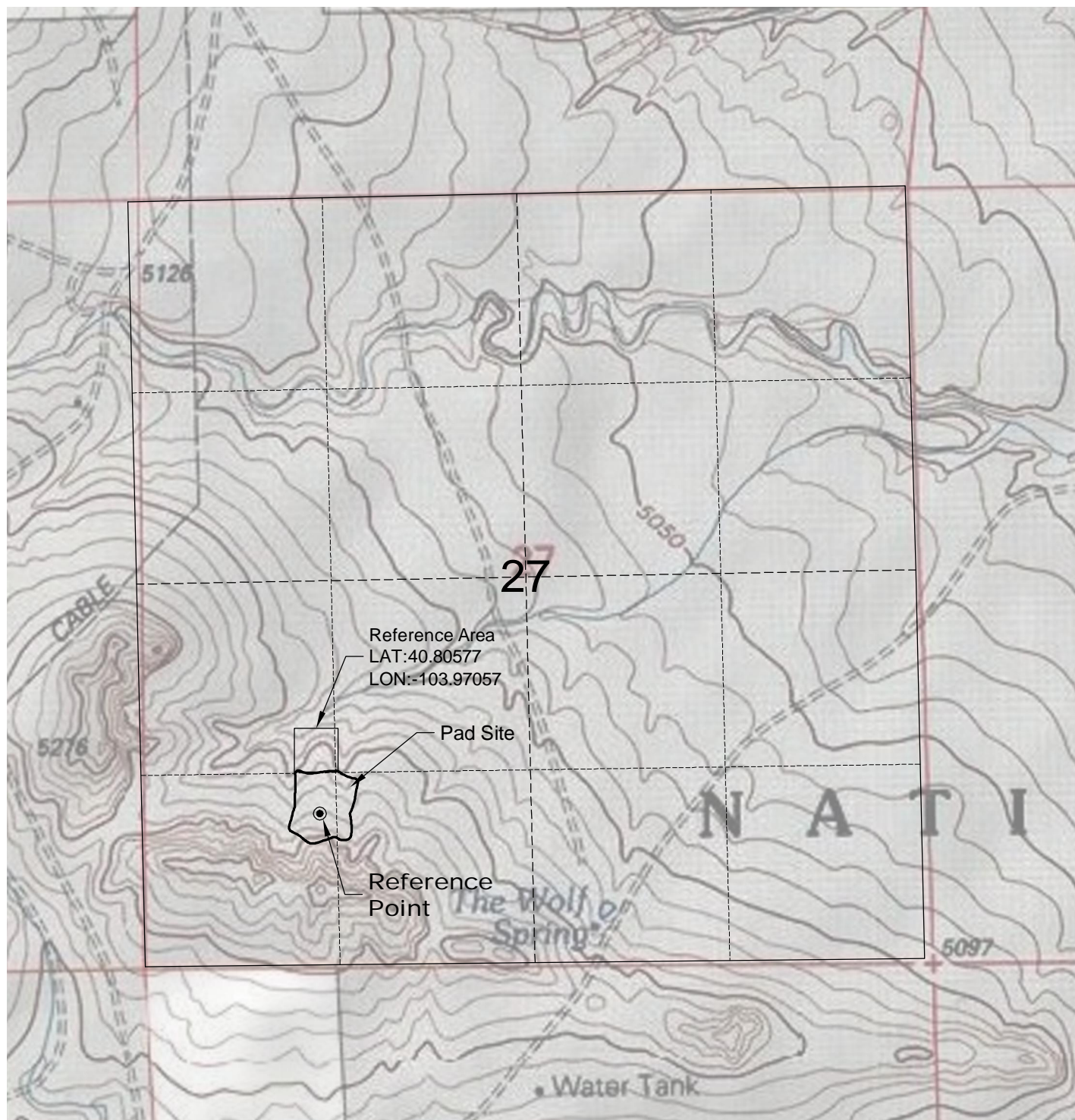
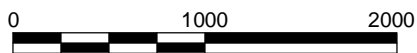


DWG: G:\GEOSURV\WeldzNorth\Corrizo 110004\Wellplats\Nelson Ranches 27-14-10-59\F2A R1.dwg
 USER: Administrator DATE: Jul 17, 2012 8:36am



North



Graphic Scale in Feet
1" = 1000'



LAND SURVEYING AND MAPPING
LAFAYETTE - WINTER PARK
Ph 303 666 0379 Fx 303 665 6320

CARRIZO OIL & GAS, INC
NELSON RANCHES 27-14-10-59 PAD

SW1/4 SW1/4 SECTION 27 T10N R59W
6th PM WELD COUNTY COLORADO

7/17/12