

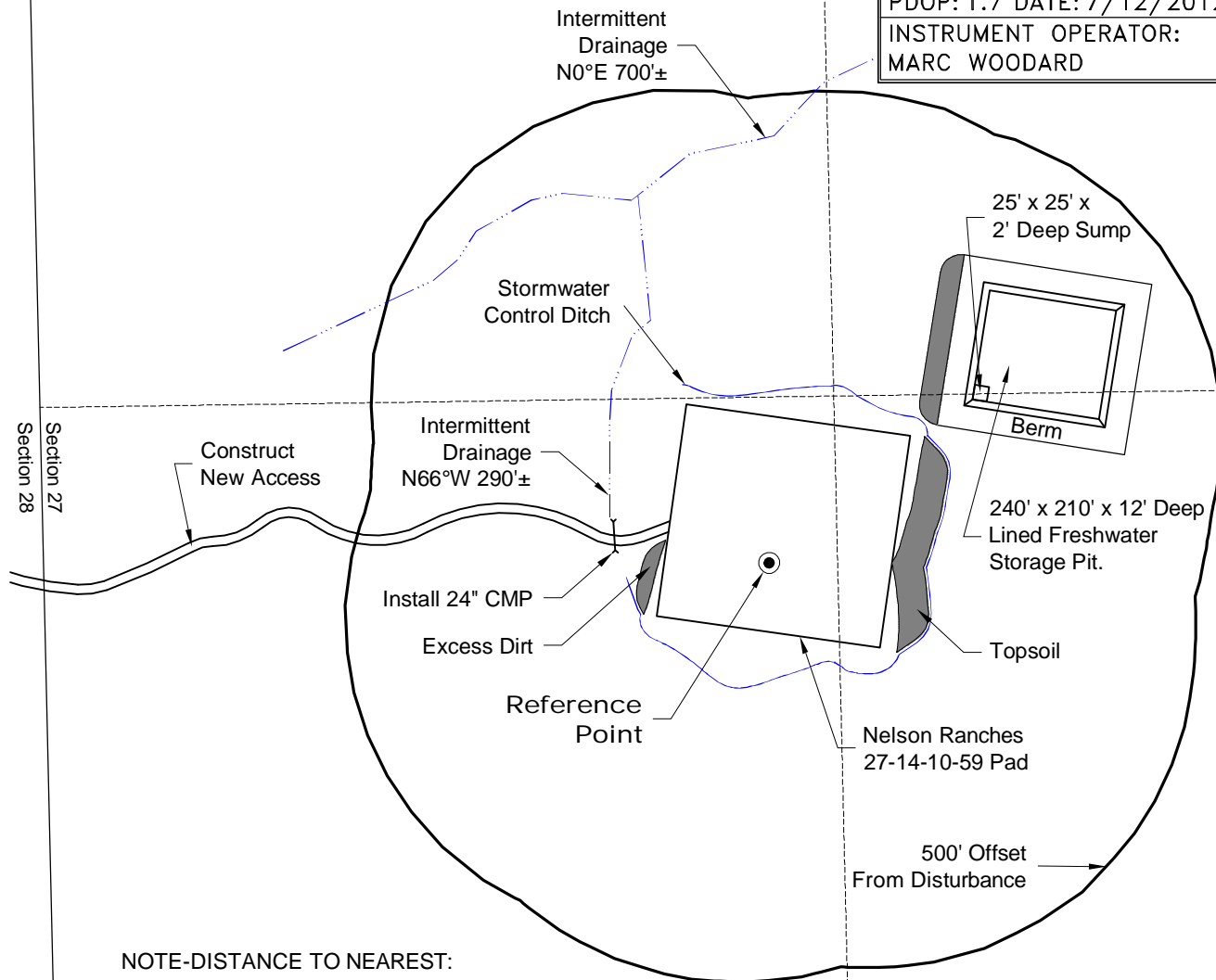
LOCATION DRAWING

VEGETATION:
DRY LAND PASTURE

SURFACE USE:
GRAZING

REFERENCE POINT

LATITUDE: 40.80458
LONGITUDE: -103.97050
FOOTAGE: 1038 FSL 1222 FWL
GROUND ELEVATION: 5194.0
PDOP: 1.7 DATE: 7/12/2012
INSTRUMENT OPERATOR: MARC WOODARD



NOTE-DISTANCE TO NEAREST:

Property Line - $S1^{\circ}E\ 1040' \pm$
Public Road - WCR 110.5 - $S64^{\circ}W\ 4000' \pm$
Building - House $N0^{\circ}E\ 2.7$ Miles
Railroad - $S3^{\circ}W\ 38.3$ Miles
Powerline - S 4.1 Miles

DISTURBANCE ACREAGE:
5.3± DRILLING OPERATIONS
2.3± FRESHWATER STORAGE PIT
1.0± INTERIM RECLAIM

NOTE:
ALL PRODUCTION FACILITIES WILL BE ON PAD.

7/17/12



North

0 300 600

Graphic Scale in Feet
1" = 300'



LAND SURVEYING AND MAPPING
LAFAYETTE - WINTER PARK
Ph 303 666 0379 Fx 303 665 6320

CARRIZO OIL & GAS, INC
NELSON RANCHES 27-14-10-59 PAD

SW1/4 SW1/4 SECTION 27 T10N R59W
6th PM WELD COUNTY COLORADO