

CONSTRUCTION LAYOUT DRAWING

1 of 2

VEGETATION:
DRY LAND PASTURE

SURFACE USE:
GRAZING

PAD 360'X380' ELEV= 5188.9

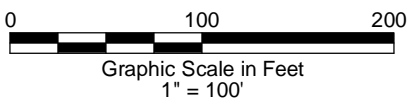
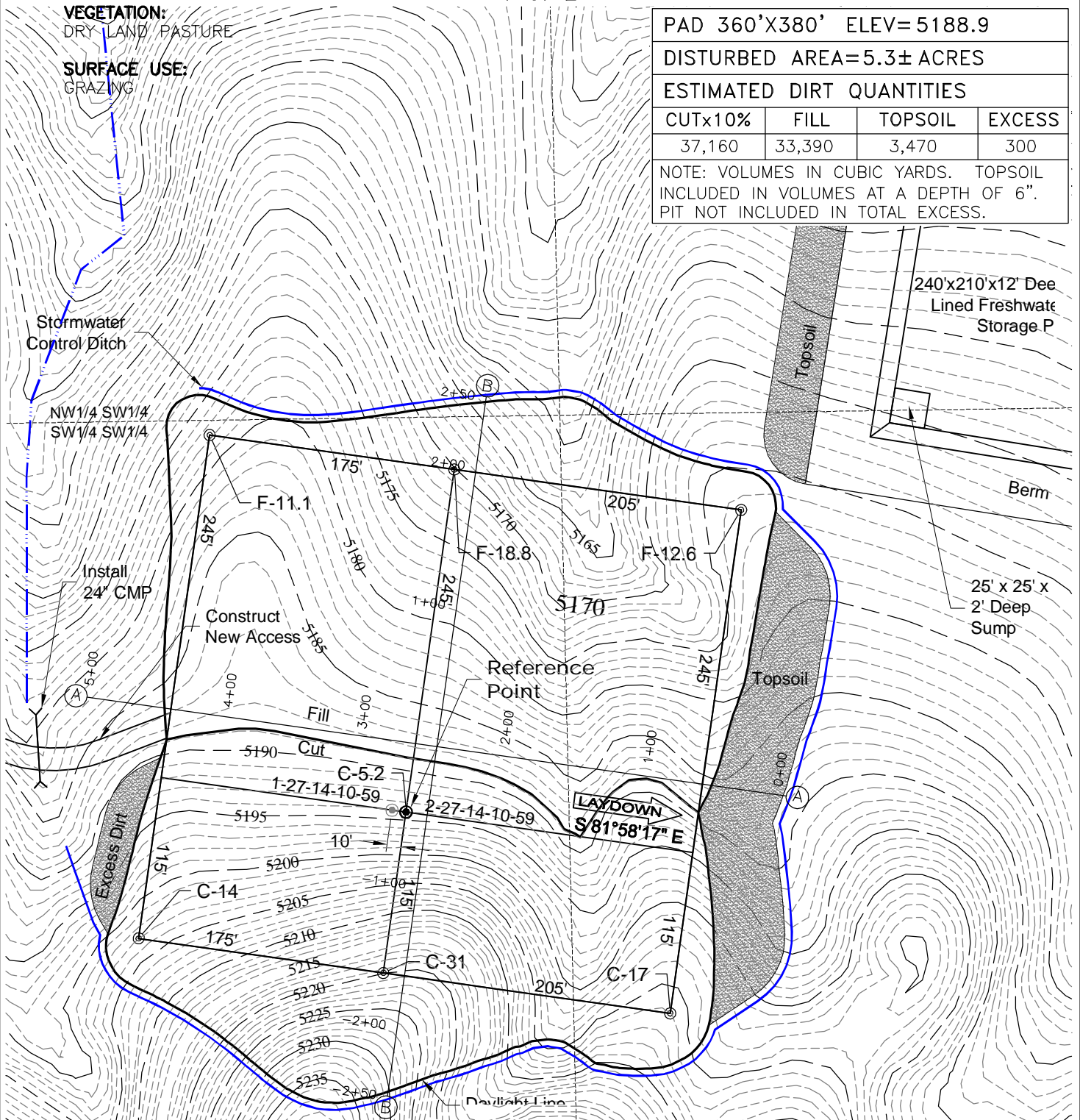
DISTURBED AREA=5.3± ACRES

ESTIMATED DIRT QUANTITIES

CUTx10%	FILL	TOPSOIL	EXCESS
37,160	33,390	3,470	300

NOTE: VOLUMES IN CUBIC YARDS. TOPSOIL INCLUDED IN VOLUMES AT A DEPTH OF 6". PIT NOT INCLUDED IN TOTAL EXCESS.

DWG: G:\GEO SURV\WeitzNorth\Corriza 110004\Wellplate\Nelson Ranches 27-14-10-59 F2A R1.dwg
USER: Administrator
DATE: Jul 17, 2012 8:36am



7/17/12



LAND SURVEYING AND MAPPING
LAFAYETTE - WINTER PARK
Ph 303 666 0379 Fx 303 665 6320

NOTE:

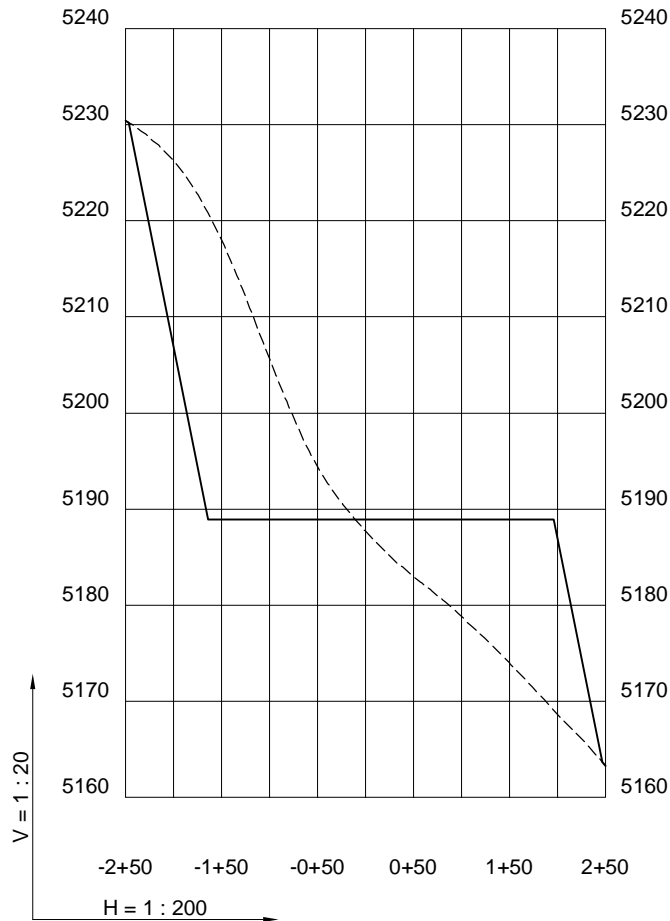
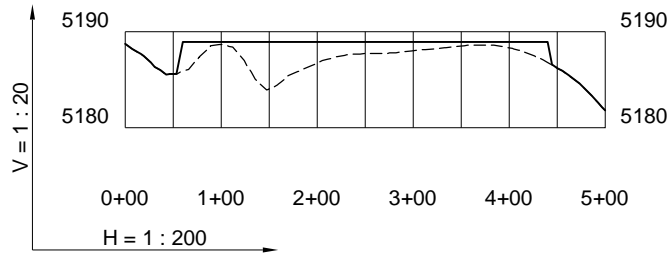
10% ALLOWANCE IS MADE FOR SOIL EXPANSION.

CARRIZO OIL & GAS, INC
NELSON RANCHES 27-14-10-59 PAD

SW1/4 SW1/4 SECTION 27 T10N R59W
6th PM WELD COUNTY COLORADO

CONSTRUCTION LAYOUT DRAWING

2 of 2



7/17/12

----- Existing Ground
 _____ Proposed Grade

GEO SURV
 LAND SURVEYING AND MAPPING
 LAFAYETTE - WINTER PARK
 Ph 303 666 0379 Fx 303 665 6320

CARRIZO OIL & GAS, INC
NELSON RANCHES 27-14-10-59 PAD
SW1/4 SW1/4 SECTION 27 T10N R59W
6th PM WELD COUNTY COLORADO