
WPX ENERGY ROCKY MOUNTAIN LLC-EBUS

**RWF 12-36
RULISON
Garfield County , Colorado**

Cement Surface Casing
13-Mar-2012

Post Job Report

The Road to Excellence Starts with Safety

Sold To #: 300721		Ship To #: 2910503		Quote #:		Sales Order #: 9217408	
Customer: WPX ENERGY ROCKY MOUNTAIN LLC-EBUS				Customer Rep: Oaks, Rick			
Well Name: RWF			Well #: 12-36			API/UWI #: 05-045-20767	
Field: RULISON		City (SAP): RIFLE		County/Parish: Garfield		State: Colorado	
Lat: N 39.485 deg. OR N 39 deg. 29 min. 6.634 secs.				Long: W 107.84 deg. OR W -108 deg. 9 min. 36.4 secs.			
Contractor: NABORS 576			Rig/Platform Name/Num: NABORS 576				
Job Purpose: Cement Surface Casing							
Well Type: Development Well			Job Type: Cement Surface Casing				
Sales Person: SCOTT, KYLE			Srvs Supervisor: MUHLESTEIN, RYAN			MBU ID Emp #: 453609	

Job Personnel

HES Emp Name	Exp Hrs	Emp #	HES Emp Name	Exp Hrs	Emp #	HES Emp Name	Exp Hrs	Emp #
BATH, KYLE Thomas	4	477632	EICKHOFF, ROBERT Edward	4	495311	MUHLESTEIN, RYAN Herrick	4	453609

Equipment

HES Unit #	Distance-1 way	HES Unit #	Distance-1 way	HES Unit #	Distance-1 way	HES Unit #	Distance-1 way
10297346	60 mile	10616651C	60 mile	11071559	60 mile	11583931	60 mile
11808827	60 mile						

Job Hours

Date	On Location Hours	Operating Hours	Date	On Location Hours	Operating Hours	Date	On Location Hours	Operating Hours
3/13/12	5	5						

TOTAL Total is the sum of each column separately

Job

Formation Name					Date				Time		Time Zone				
Formation Depth (MD)		Top		Bottom		Called Out			13 - Mar - 2012		06:30		MST		
Form Type		BHST		On Location			13 - Mar - 2012		11:00		MST				
Job depth MD		1167. ft		Job Depth TVD		1167. ft		Job Started		13 - Mar - 2012		12:34		MST	
Water Depth		Wk Ht Above Floor		4. ft		Job Completed		13 - Mar - 2012		13:30		GMT			
Perforation Depth (MD)		From		To		Departed Loc			13 - Mar - 2012		15:00		MST		

Well Data

Description	New / Used	Max pressure psig	Size in	ID in	Weight lbm/ft	Thread	Grade	Top MD ft	Bottom MD ft	Top TVD ft	Bottom TVD ft
OPEN HOLE SECTION				13.5				.	1167.		
SURFACE CASING	Unknown		9.625	9.001	32.3		H-40	.	1151.4		

Sales/Rental/3rd Party (HES)

Description	Qty	Qty uom	Depth	Supplier
PLUG,CMTG,TOP,9 5/8,HWE,8.16 MIN/9.06 MA	1	EA		

Tools and Accessories

Type	Size	Qty	Make	Depth	Type	Size	Qty	Make	Depth	Type	Size	Qty	Make
Guide Shoe					Packer					Top Plug	9.625	1	HES
Float Shoe					Bridge Plug					Bottom Plug			
Float Collar					Retainer					SSR plug set			
Insert Float										Plug Container	9.625	1	HES
Stage Tool										Centralizers			

Miscellaneous Materials

Gelling Agt	Conc	Surfactant	Conc	Acid Type	Qty	Conc	%
Treatment Fld	Conc	Inhibitor	Conc	Sand Type	Size	Qty	

Fluid Data										
Stage/Plug #: 1										
Fluid #	Stage Type	Fluid Name	Qty	Qty uom	Mixing Density lbm/gal	Yield ft ³ /sk	Mix Fluid Gal/sk	Rate bbl/min	Total Mix Fluid Gal/sk	
1	Fresh Water		20.00	bbl	8.33	.0	.0	3.0		
2	Lead Cement	VERSACEM (TM) SYSTEM (452010)	160.0	sacks	12.3	2.38	13.75	8.0	13.75	
3	Tail Cement	VERSACEM (TM) SYSTEM (452010)	160.0	sacks	12.8	2.11	11.75	8.0	11.75	
11.75 Gal		FRESH WATER								
4	Displacement Fluid		87.00	bbl	8.34	.0	.0	10.0		
Calculated Values		Pressures		Volumes						
Displacement	87.1	Shut In: Instant		Lost Returns	0	Cement Slurry	128.9	Pad		
Top Of Cement	SURFACE	5 Min		Cement Returns	20	Actual Displacement	87.1	Treatment		
Frac Gradient		15 Min		Spacers	20	Load and Breakdown		Total Job	235	
Rates										
Circulating	10	Mixing	8	Displacement	10	Avg. Job	9			
Cement Left In Pipe	Amount	44.4 ft	Reason	Shoe Joint						
Frac Ring # 1 @	ID	Frac ring # 2 @	ID	Frac Ring # 3 @	ID	Frac Ring # 4 @	ID			
The Information Stated Herein Is Correct				Customer Representative Signature						

The Road to Excellence Starts with Safety

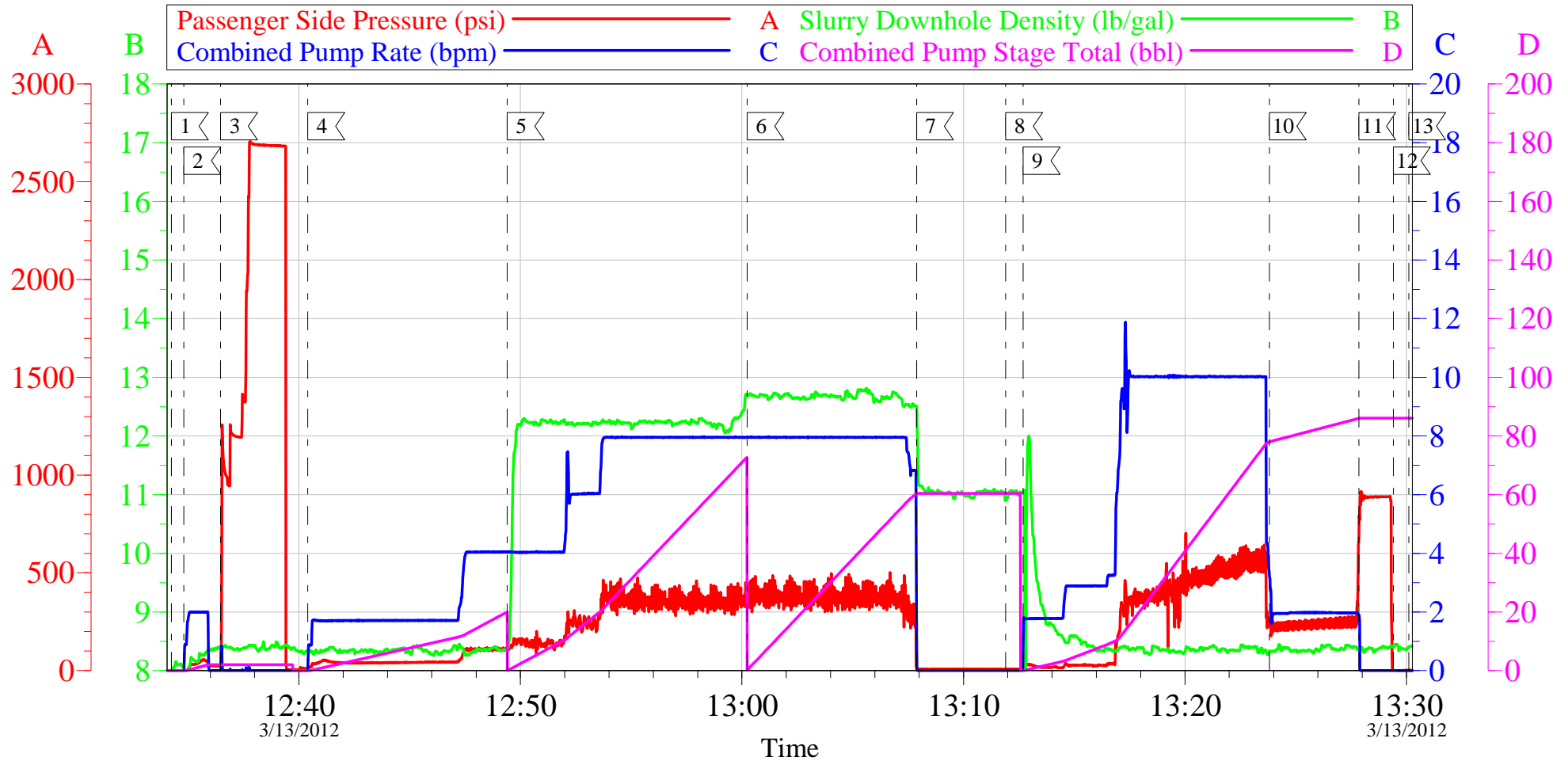
Sold To #: 300721	Ship To #: 2910503	Quote #:	Sales Order #: 9217408
Customer: WPX ENERGY ROCKY MOUNTAIN LLC-EBUS		Customer Rep: Oaks, Rick	
Well Name: RWF	Well #: 12-36	API/UWI #: 05-045-20767	
Field: RULISON	City (SAP): RIFLE	County/Parish: Garfield	State: Colorado
Legal Description:			
Lat: N 39.485 deg. OR N 39 deg. 29 min. 6.634 secs.		Long: W 107.84 deg. OR W -108 deg. 9 min. 36.4 secs.	
Contractor: NABORS 576	Rig/Platform Name/Num: NABORS 576		
Job Purpose: Cement Surface Casing			Ticket Amount:
Well Type: Development Well		Job Type: Cement Surface Casing	
Sales Person: SCOTT, KYLE	Srv Supervisor: MUHLESTEIN, RYAN	MBU ID Emp #: 453609	

Activity Description	Date/Time	Cht #	Rate bbl/min	Volume bbl		Pressure psig		Comments
				Stage	Total	Tubing	Casing	
Call Out	03/13/2012 06:30							
Pre-Convoy Safety Meeting	03/13/2012 09:00							WITH ALL HES PERSONNEL SAFE DRIVING PRACTICES AND TRAVEL ROUTE REVIEWED
Arrive at Location from Service Center	03/13/2012 11:00							RIG STILL RUNNING CASING
Assessment Of Location Safety Meeting	03/13/2012 11:10							WITH ALL HES PERSONNEL
Pre-Rig Up Safety Meeting	03/13/2012 11:20							WITH ALL HES PERSONNEL
Rig-Up Equipment	03/13/2012 11:30							1 ELITE HT 400 PUMP, 1 660 BULK TRUCK, 1 F-450 PICK-UP, 1 PLUG CONTAINER, 2" IRON TO STAND PIPE
Circulate Well	03/13/2012 12:00							CASING ON BOTTOM, RIG CIRCULATES USING HES SWAGE AND IRON, CIRC. 1 HR, 10 BPM, 300 PSI. MUD REPORT 9.1 PPG PV 29, YP 27.
Pre-Job Safety Meeting	03/13/2012 12:20							WITH ALL HES PERSONNEL, RIG CREW AND CO REP
Start Job	03/13/2012 12:34							TD 1167', TP 1151.4', FC 1107', SJ 44.4', OH 13.5", SURFACE CASING 9.625" 32.3# H-40.
Pump Water	03/13/2012 12:34		2	2			52.0	FRESH H2O, TO PRIME LINES

Activity Description	Date/Time	Cht #	Rate bbl/min	Volume bbl		Pressure psig		Comments
				Stage	Total	Tubing	Casing	
Test Lines	03/13/2012 12:36							HELD 2490 PSI MIN NO LEAKS
Pump Spacer 1	03/13/2012 12:40		3	20			95.0	FRESH H2O
Pump Lead Cement	03/13/2012 12:49		8	67.8			387.0	160 SKS 12.3 PPG 2.38 FT3/SK 13.75 GAL/SK WEIGHED VERIFIED VIA MUD SCALES WET AND DRY SAMPLES SUBMITTED
Pump Tail Cement	03/13/2012 13:00		8	60.1			482.0	160 SKS 12.8 PPG 2.11 FT3/SK 11.75 GAL/SK WEIGHED VERIFIED VIA MUD SCALES WET AND DRY SAMPLES SUBMITTED
Shutdown	03/13/2012 13:07							WASH UP ON TOP OF PLUG
Drop Top Plug	03/13/2012 13:11							VERIFY PLUG LAUNCHED
Pump Displacement	03/13/2012 13:12		10	87.1			575.0	CMT RETURNS 67 BBLS INTO DIS, 20 BBLS TO SURFACE
Slow Rate	03/13/2012 13:23		2	77			253.0	SLOW RATE 10 BBLS PRIOR TO CALCULATED DISPLACEMENT
Bump Plug	03/13/2012 13:27		2	87.1			864.0	BUMP PLUG HOLD 2 MINS
Check Floats	03/13/2012 13:29							FLOATS HOLDING, GOOD RETURNS THROUGHOUT JOB
End Job	03/13/2012 13:30							NO ADD HOURS OR DERRICK CHARGE. 40 LBS SUGAR USED
Pre-Rig Down Safety Meeting	03/13/2012 13:45							WITH ALL HES PERSONNEL
Rig-Down Equipment	03/13/2012 14:00							AREA FREE FROM DEBRIS
Pre-Convoy Safety Meeting	03/13/2012 14:55							WITH ALL HES PERSONNEL
Crew Leave Location	03/13/2012 15:00							THANK YOU FOR USING HALLIBURTON CEMENT DEPARTMENT. RYAN MUHLESTEIN AND CREW

WXP ENERGY ROCKY MTN - RWF 12-36

SURFACE



Local Event Log

1 START JOB	12:34:15	2 PRIME LINES	12:34:48	3 PRESSURE TEST	12:36:28
4 PUMP H2O SPACER	12:40:24	5 PUMP LEAD CMT	12:49:24	6 PUMP TAIL CMT	13:00:14
7 SHUT DOWN	13:07:53	8 DROP PLUG	13:11:54	9 PUMP DISPLACEMENT	13:12:42
10 SLOW RATE	13:23:48	11 BUMP PLUG	13:27:51	12 CHECK FLOATS	13:29:24
13 END JOB	13:30:06				

Customer: WXP ENERGY ROCKY MTN
Well Description: RWF 12-36
Company Rep: RICK OAKS

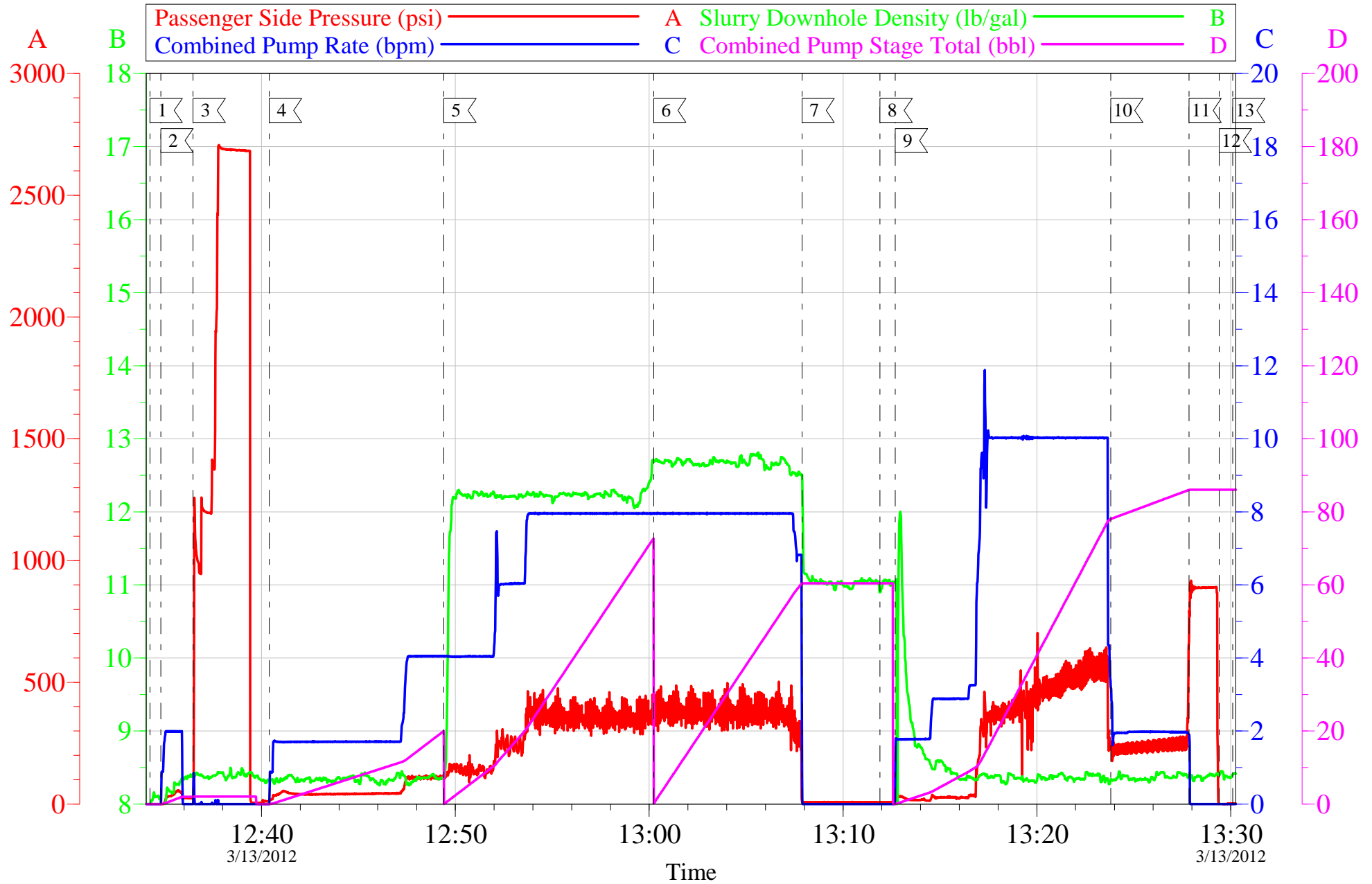
Job Date: 13-Mar-2012
Job Type: SURFACE
Cement Supervisor: RYAN MUHLESTEIN

Sales Order #: 9217408
ADC Used: YES
ELITE 4 KYLE BATH

OptiCem v6.4.10
13-Mar-12 14:50

WXP ENERGY ROCKY MTN - RWF 12-36

SURFACE



Customer:	WXP ENERGY ROCKY MTN	Job Date:	13-Mar-2012	Sales Order #:	9217408
Well Description:	RWF 12-36	Job Type:	SURFACE	ADC Used:	YES
Company Rep:	RICK OAKS	Cement Supervisor:	RYAN MUHLESTEIN	ELITE 4	KYLE BATH

OptiCem v6.4.10
13-Mar-12 14:51

HALLIBURTON

Water Analysis Report

Company: WPX ENERGY

Submitted by: RYAN MUHLESTEIN

Attention: J. Trout

Lease RWF 12-36

Well #

Date: 3/13/2012

Date Rec.: 3/13/2012

S.O.# 9217408

Job Type: SURFACE

Specific Gravity	<i>MAX</i>	1
pH	<i>8</i>	7
Potassium (K)	<i>5000</i>	200 Mg / L
Calcium (Ca)	<i>500</i>	250 Mg / L
Iron (FE2)	<i>300</i>	0 Mg / L
Chlorides (Cl)	<i>3000</i>	0 Mg / L
Sulfates (SO ₄)	<i>1500</i>	below 200 Mg / L
Chlorine (Cl ₂)		0 Mg / L
Temp	<i>40-80</i>	80 Deg
Total Dissolved Solids		350 Mg / L

Respectfully: RYAN MUHLESTEIN

Title: CEMENTING SUPERVISOR

Location: Grand Junction, CO

NOTICE:

This report is limited to the described sample tested. Any person using or relying on this report agrees that Halliburton shall not be liable for any loss or damage whether due to act or omission resulting from such report or its

Sales Order #: 9217408	Line Item: 10	Survey Conducted Date: 3/13/2012
Customer: WPX ENERGY ROCKY MOUNTAIN LLC-EBUS		Job Type (BOM): CMT SURFACE CASING BOM
Customer Representative: RICK OAKS		API / UWI: (leave blank if unknown) 05-045-20767
Well Name: RWF		Well Number: 12-36
Well Type: Development Well	Well Country: United States of America	
H2S Present:	Well State: Colorado	Well County: Garfield

Dear Customer,

We hope that you were satisfied with the service quality of this job performed by Halliburton. It is the aim of our management and service personnel to deliver equipment and service of a standard unmatched in the service sector of the energy industry.

Please take the time to let us know if our performance met with your satisfaction. Please be as critical as possible to ensure we constantly improve our service. Your comments are of great value to us and are intended for the exclusive use of Halliburton.

CUSTOMER SATISFACTION SURVEY

CATEGORY	CUSTOMER SATISFACTION RESPONSE	
Survey Conducted Date	The date the survey was conducted	3/13/2012
Survey Interviewer	The survey interviewer is the person who initiated the survey.	RYAN MUHLESTEIN (HB21105)
Customer Participation	Did the customer participate in this survey? (Y/N)	Yes
Customer Representative	Enter the Customer representative name	RICK OAKS
HSE	Was our HSE performance satisfactory? Circle Y or N	Yes
Equipment	Were you satisfied with our Equipment? Circle Y or N	Yes
Personnel	Were you satisfied with our people? Circle Y or N	Yes
Customer Comment	Customer's Comment	

CUSTOMER SIGNATURE

Sales Order #: 9217408	Line Item: 10	Survey Conducted Date: 3/13/2012
Customer: WPX ENERGY ROCKY MOUNTAIN LLC-EBUS		Job Type (BOM): CMT SURFACE CASING BOM
Customer Representative: RICK OAKS		API / UWI: (leave blank if unknown) 05-045-20767
Well Name: RWF		Well Number: 12-36
Well Type: Development Well	Well Country: United States of America	
H2S Present:	Well State: Colorado	Well County: Garfield

KEY PERFORMANCE INDICATORS

General	
Survey Conducted Date The date the survey was conducted	3/13/2012

Cementing KPI Survey	
Type of Job Select the type of job. (Cementing or Non-Cementing)	0
Select the Maximum Deviation range for this Job What is the highest deviation for the job you just completed? This may not be the maximum well deviation.	Vertical
Total Operating Time (hours) Total Operating Hours Including Rig-up, Pumping, Rig-down. Enter in decimal format.	5
HSE Incident, Accident, Injury HSE Incident, Accident, Injury. This should be recordable incidents only.	No
Was the job purpose achieved? Was the job delivered correctly as per customer agreed design?	Yes
Operating Hours (Pumping Hours) Total number of hours pumping fluid on this job. Enter in decimal format.	1.25
Customer Non-Productive Rig Time (hrs) Lost time due to Halliburton in the start, execution, or completion of an ordered service or product, or delays in a follow-on service. Enter in decimal format. 0 if none.	0
Type of Rig Classification Job Was Performed Type Of Rig (classification) Job Was Performed On	Drilling Rig (Portable)
Number Of JSAs Performed Number Of Jsas Performed	6
Number of Unplanned Shutdowns Unplanned shutdown is when injection stops for any period of time.	0
Was this a Primary Cement Job (Yes / No)	Yes

Sales Order #: 9217408	Line Item: 10	Survey Conducted Date: 3/13/2012
Customer: WPX ENERGY ROCKY MOUNTAIN LLC-EBUS		Job Type (BOM): CMT SURFACE CASING BOM
Customer Representative: RICK OAKS		API / UWI: (leave blank if unknown) 05-045-20767
Well Name: RWF		Well Number: 12-36
Well Type: Development Well	Well Country: United States of America	
H2S Present:	Well State: Colorado	Well County: Garfield

Primary Cement Job= Casing job, Liner job, or Tie-back job.	
Did We Run Wiper Plugs? Did We Run Top And Bottom Casing Wiper Plugs?	Top
Mixing Density of Job Stayed in Designed Density Range (0-100%) Density Range defined as +/- .20 ppg. Calculation: Total BBLs cement mixed at designed density divided by total BBLs of cement multiplied by 100	98
Was Automated Density Control Used? Was Automated Density Control (ADC) Used ?	Yes
Pump Rate (percent) of Job Stayed At Designed Pump Rate Pump Rate range defined as +/- 1bbl/min. Calculation: Total BBLs of fluid pumped at the designed rate divided by Total BBLs of fluid pumped, multiplied by 100	98
Nbr of Remedial Sqz Jobs Rqd - Competition Number Of Remedial Squeeze Jobs Required After Primary Job Performed By Competition	0
Nbr of Remedial Plug Jobs Rqd - HES Number Of Remedial Plug Jobs Needed After Primary Plug Pumped By HES	0
Nbr of Remedial Sqz Jobs Rqd - HES Number Of Remedial Squeeze Jobs Required After Primary Job Performed By HES	0