

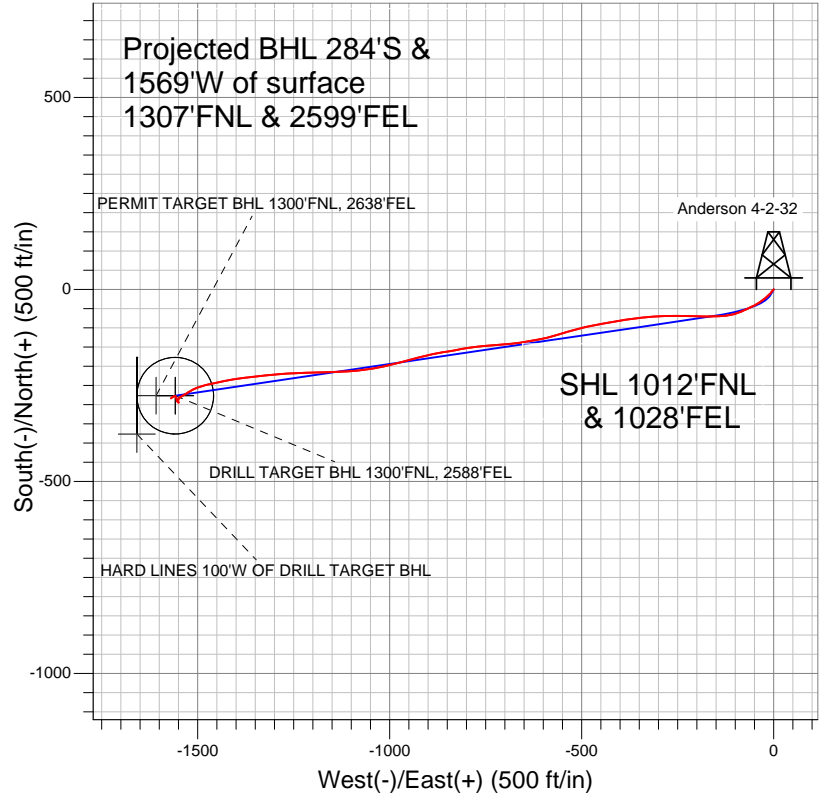
Well Name: Anderson 4-2-32

Surface Location: Anderson 6-4-32 Pad Sec.32-T2N-R68W
 North American Datum 1983 US State Plane 1983Colorado Northern Zone
 Ground Elevation: 4950.0

+N/-S	+E/-W	Northing	Easting	Latitude	Longitude	Slot
0.0	0.0	1279464.51	3133887.97	40.099530	-105.021390	

Original Well Elev
 WELL @ 4963.0ft (Original Well Elev)

EnCana Oil & Gas Weld County CO

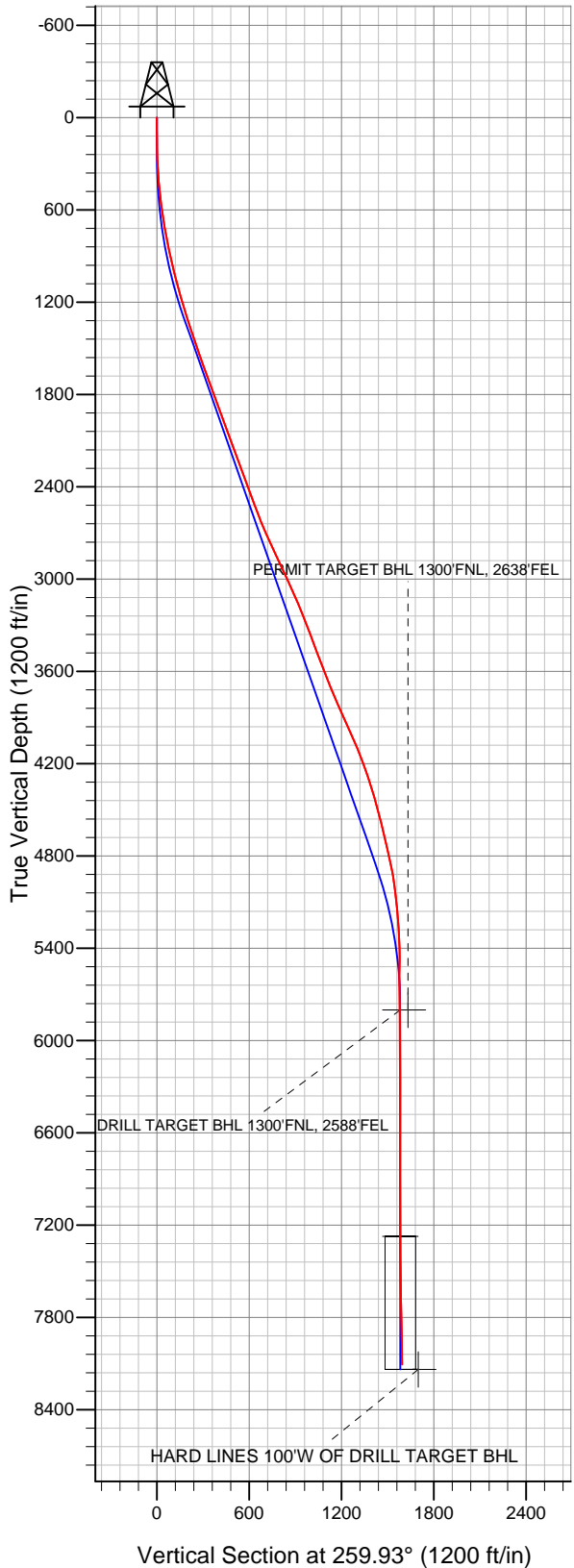


- LEGEND
- Wellbore #1
 - Anderson 4-2-32, Wellbore #1, Plan #1 (4-16-12) V0
 - Survey #1

Final Survey Plot

Projected Final Survey -
 8379'MD & 8105'TVD @ 1595'VS
 1.00 deg Inc 218.70 deg AZ

Project: SEC.32-T2N-R68W
 Site: Anderson 6-4-32 Pad Sec.32-T2N-R68W
 Well: Anderson 4-2-32
 Plan: Wellbore #1





EnCana Oil & Gas Weld County CO

SEC.32-T2N-R68W

Anderson 6-4-32 Pad Sec.32-T2N-R68W

Anderson 4-2-32

Wellbore #1

Survey: Survey #1

Standard Survey Report

15 May, 2012

Survey	Survey Data									
	Measured Depth (ft)	Inclination (°)	Azimuth (°)	Vertical Depth (ft)	+N/-S (ft)	+E/-W (ft)	Vertical Section (ft)	Dogleg Rate (°/100ft)	Build Rate (°/100ft)	Turn Rate (°/100ft)
	0.0	0.00	0.00	0.0	0.0	0.0	0.0	0.00	0.00	0.00
	71.0	0.30	243.90	71.0	-0.1	-0.2	0.2	0.42	0.42	0.00
	163.0	0.60	232.30	163.0	-0.5	-0.8	0.8	0.34	0.33	-12.61
	254.0	2.60	215.20	254.0	-2.5	-2.3	2.7	2.24	2.20	-18.79
	345.0	4.70	218.20	344.8	-7.1	-5.8	7.0	2.32	2.31	3.30
	437.0	6.20	225.00	436.3	-13.6	-11.7	13.9	1.77	1.63	7.39
	529.0	7.70	232.10	527.7	-20.9	-20.0	23.4	1.88	1.63	7.72
	620.0	10.00	232.10	617.6	-29.5	-31.1	35.8	2.53	2.53	0.00
	712.0	10.60	239.50	708.1	-38.7	-44.7	50.8	1.58	0.65	8.04
	786.0	11.90	244.60	780.7	-45.4	-57.4	64.5	2.21	1.76	6.89
	850.0	12.40	246.00	843.2	-51.0	-69.7	77.5	0.91	0.78	2.19
	871.0	12.90	244.80	863.7	-52.9	-73.9	82.0	2.69	2.38	-5.71
	958.0	12.70	247.90	948.6	-60.7	-91.5	100.7	0.82	-0.23	3.56

Company:	EnCana Oil & Gas Weld County CO	Local Co-ordinate Reference:	Well Anderson 4-2-32
Project:	SEC.32-T2N-R68W	TVD Reference:	WELL @ 4963.0ft (Original Well Elev)
Site:	Anderson 6-4-32 Pad Sec.32-T2N-R68W	MD Reference:	WELL @ 4963.0ft (Original Well Elev)
Well:	Anderson 4-2-32	North Reference:	True
Wellbore:	Wellbore #1	Survey Calculation Method:	Minimum Curvature
Design:	Wellbore #1	Database:	Landmark

Survey

Measured Depth (ft)	Inclination (°)	Azimuth (°)	Vertical Depth (ft)	+N/-S (ft)	+E/-W (ft)	Vertical Section (ft)	Dogleg Rate (°/100ft)	Build Rate (°/100ft)	Turn Rate (°/100ft)
1,046.0	12.90	259.20	1,034.4	-66.1	-110.1	120.0	2.85	0.23	12.84
1,133.0	15.30	264.70	1,118.8	-69.0	-131.1	141.1	3.16	2.76	6.32
1,220.0	17.40	268.70	1,202.3	-70.4	-155.5	165.4	2.74	2.41	4.60
1,308.0	18.30	270.20	1,286.0	-70.6	-182.5	192.0	1.15	1.02	1.70
1,395.0	18.70	272.90	1,368.5	-69.9	-210.1	219.1	1.09	0.46	3.10
1,482.0	19.10	270.10	1,450.8	-69.1	-238.3	246.7	1.14	0.46	-3.22
1,570.0	19.10	269.70	1,534.0	-69.2	-267.1	275.0	0.15	0.00	-0.45
1,657.0	19.80	266.70	1,616.0	-70.1	-296.0	303.7	1.40	0.80	-3.45
1,744.0	19.90	266.40	1,697.9	-71.9	-325.5	333.0	0.16	0.11	-0.34
1,832.0	20.70	262.90	1,780.4	-74.8	-355.9	363.5	1.65	0.91	-3.98
1,919.0	20.80	260.80	1,861.8	-79.1	-386.4	394.3	0.86	0.11	-2.41
2,006.0	20.00	259.90	1,943.3	-84.2	-416.3	424.6	0.99	-0.92	-1.03
2,093.0	20.20	259.50	2,025.0	-89.5	-445.7	454.5	0.28	0.23	-0.46
2,181.0	20.10	259.00	2,107.6	-95.2	-475.5	484.8	0.23	-0.11	-0.57
2,268.0	19.90	255.80	2,189.4	-101.7	-504.5	514.5	1.28	-0.23	-3.68
2,355.0	20.00	254.30	2,271.2	-109.3	-533.2	544.1	0.60	0.11	-1.72
2,443.0	20.20	252.30	2,353.8	-118.0	-562.1	574.1	0.81	0.23	-2.27
2,530.0	20.50	257.10	2,435.4	-126.0	-591.3	604.2	1.95	0.34	5.52
2,617.0	21.00	260.10	2,516.7	-132.1	-621.5	635.0	1.35	0.57	3.45
2,705.0	21.30	260.40	2,598.8	-137.5	-652.8	666.8	0.36	0.34	0.34
2,792.0	23.20	265.00	2,679.3	-141.6	-685.5	699.7	2.96	2.18	5.29
2,879.0	24.30	265.50	2,759.0	-144.5	-720.4	734.5	1.29	1.26	0.57
2,966.0	25.10	264.80	2,838.0	-147.6	-756.6	770.7	0.98	0.92	-0.80
3,054.0	26.20	261.10	2,917.3	-152.3	-794.4	808.8	2.21	1.25	-4.20
3,141.0	24.50	259.70	2,995.9	-158.5	-831.1	846.0	2.07	-1.95	-1.61
3,228.0	23.60	260.90	3,075.4	-164.4	-866.1	881.5	1.18	-1.03	1.38
3,316.0	23.00	256.50	3,156.2	-171.2	-900.2	916.2	2.09	-0.68	-5.00
3,403.0	22.00	255.00	3,236.6	-179.4	-932.4	949.4	1.33	-1.15	-1.72
3,490.0	21.50	255.50	3,317.4	-187.6	-963.6	981.6	0.61	-0.57	0.57
3,578.0	20.10	255.50	3,399.7	-195.5	-993.9	1,012.7	1.59	-1.59	0.00
3,665.0	20.60	259.30	3,481.2	-202.0	-1,023.4	1,042.9	1.62	0.57	4.37
3,752.0	21.10	260.40	3,562.5	-207.5	-1,053.9	1,073.9	0.73	0.57	1.26
3,839.0	22.00	265.00	3,643.5	-211.5	-1,085.5	1,105.8	2.20	1.03	5.29
3,927.0	22.40	266.60	3,724.9	-214.0	-1,118.7	1,138.9	0.82	0.45	1.82
4,014.0	23.90	268.70	3,804.9	-215.3	-1,152.9	1,172.8	1.97	1.72	2.41
4,101.0	23.30	268.80	3,884.7	-216.1	-1,187.7	1,207.2	0.69	-0.69	0.11
4,189.0	25.30	267.30	3,964.9	-217.4	-1,223.9	1,243.0	2.38	2.27	-1.70
4,276.0	23.90	267.60	4,044.0	-219.0	-1,260.1	1,278.9	1.62	-1.61	0.34
4,363.0	22.20	264.80	4,124.0	-221.2	-1,294.0	1,312.8	2.32	-1.95	-3.22
4,451.0	20.30	263.90	4,206.0	-224.3	-1,325.8	1,344.6	2.19	-2.16	-1.02
4,538.0	18.50	263.00	4,288.1	-227.6	-1,354.5	1,373.4	2.10	-2.07	-1.03
4,625.0	16.70	263.00	4,371.0	-230.8	-1,380.6	1,399.7	2.07	-2.07	0.00
4,712.0	15.40	262.50	4,454.6	-233.8	-1,404.4	1,423.7	1.50	-1.49	-0.57
4,800.0	14.80	257.20	4,539.6	-237.9	-1,427.0	1,446.6	1.71	-0.68	-6.02
4,887.0	13.90	257.90	4,623.9	-242.5	-1,448.1	1,468.1	1.05	-1.03	0.80
4,974.0	13.00	257.10	4,708.5	-246.9	-1,467.8	1,488.4	1.06	-1.03	-0.92
5,062.0	12.50	256.20	4,794.3	-251.4	-1,486.7	1,507.8	0.61	-0.57	-1.02
5,149.0	11.50	248.10	4,879.4	-256.9	-1,503.9	1,525.6	2.25	-1.15	-9.31
5,236.0	9.90	238.10	4,964.9	-264.0	-1,518.3	1,541.1	2.81	-1.84	-11.49
5,324.0	6.10	236.80	5,052.0	-270.6	-1,528.6	1,552.4	4.32	-4.32	-1.48
5,411.0	5.50	239.80	5,138.6	-275.2	-1,536.1	1,560.6	0.77	-0.69	3.45
5,498.0	4.80	242.60	5,225.2	-279.0	-1,542.9	1,568.0	0.85	-0.80	3.22
5,585.0	5.00	216.10	5,311.9	-283.7	-1,548.4	1,574.2	2.59	0.23	-30.46
5,673.0	3.10	189.70	5,399.7	-289.2	-1,551.1	1,577.7	2.97	-2.16	-30.00

Company:	EnCana Oil & Gas Weld County CO	Local Co-ordinate Reference:	Well Anderson 4-2-32
Project:	SEC.32-T2N-R68W	TVD Reference:	WELL @ 4963.0ft (Original Well Elev)
Site:	Anderson 6-4-32 Pad Sec.32-T2N-R68W	MD Reference:	WELL @ 4963.0ft (Original Well Elev)
Well:	Anderson 4-2-32	North Reference:	True
Wellbore:	Wellbore #1	Survey Calculation Method:	Minimum Curvature
Design:	Wellbore #1	Database:	Landmark

Survey										
Measured Depth (ft)	Inclination (°)	Azimuth (°)	Vertical Depth (ft)	+N/-S (ft)	+E/-W (ft)	Vertical Section (ft)	Dogleg Rate (°/100ft)	Build Rate (°/100ft)	Turn Rate (°/100ft)	
5,760.0	1.80	150.00	5,486.6	-292.7	-1,550.8	1,578.1	2.37	-1.49	-45.63	
5,847.0	1.10	152.60	5,573.6	-294.6	-1,549.7	1,577.4	0.81	-0.80	2.99	
6,022.0	1.10	321.40	5,748.6	-294.8	-1,550.0	1,577.7	1.25	0.00	96.46	
6,073.7	0.97	316.86	5,800.3	-294.1	-1,550.6	1,578.1	0.30	-0.25	-8.78	
DRILL TARGET BHL 1300'FNL, 2588'FEL										
6,074.2	0.97	316.86	5,800.8	-294.1	-1,550.6	1,578.1	0.00	0.00	0.00	
PERMIT TARGET BHL 1300'FNL, 2638'FEL										
6,197.0	0.70	299.60	5,923.6	-293.0	-1,552.0	1,579.3	0.30	-0.22	-14.06	
6,371.0	0.90	335.10	6,097.6	-291.2	-1,553.5	1,580.4	0.30	0.11	20.40	
6,546.0	1.10	343.20	6,272.5	-288.3	-1,554.5	1,581.0	0.14	0.11	4.63	
6,720.0	0.60	1.80	6,446.5	-285.8	-1,555.0	1,581.0	0.32	-0.29	10.69	
6,895.0	0.80	344.60	6,621.5	-283.7	-1,555.3	1,580.9	0.16	0.11	-9.83	
7,070.0	1.00	338.80	6,796.5	-281.1	-1,556.2	1,581.3	0.13	0.11	-3.31	
7,244.0	0.60	339.20	6,970.5	-278.9	-1,557.0	1,581.8	0.23	-0.23	0.23	
7,419.0	0.20	282.60	7,145.5	-277.9	-1,557.6	1,582.3	0.30	-0.23	-32.34	
7,546.5	0.35	286.24	7,273.0	-277.8	-1,558.2	1,582.8	0.12	0.11	2.85	
TARGET CIRCLE 1300'FNL & 2588'FEL										
7,593.0	0.40	286.90	7,319.5	-277.7	-1,558.5	1,583.1	0.12	0.12	1.43	
7,768.0	0.40	250.70	7,494.5	-277.7	-1,559.7	1,584.2	0.14	0.00	-20.69	
7,943.0	1.10	247.70	7,669.4	-278.6	-1,561.8	1,586.5	0.40	0.40	-1.71	
8,117.0	1.30	234.70	7,843.4	-280.3	-1,565.0	1,589.9	0.19	0.11	-7.47	
8,292.0	1.20	240.50	8,018.4	-282.4	-1,568.2	1,593.4	0.09	-0.06	3.31	
8,329.0	1.00	218.70	8,055.4	-282.8	-1,568.7	1,594.0	1.24	-0.54	-58.92	
8,379.0	1.00	218.70	8,105.3	-283.5	-1,569.3	1,594.7	0.00	0.00	0.00	
HARD LINES 100'W OF DRILL TARGET BHL										

Checked By: _____ Approved By: _____ Date: _____