

CONSTRUCTION LAYOUT DRAWING

1 of 2

VEGETATION:
DRY LAND PASTURE

SURFACE USE:
GRAZING

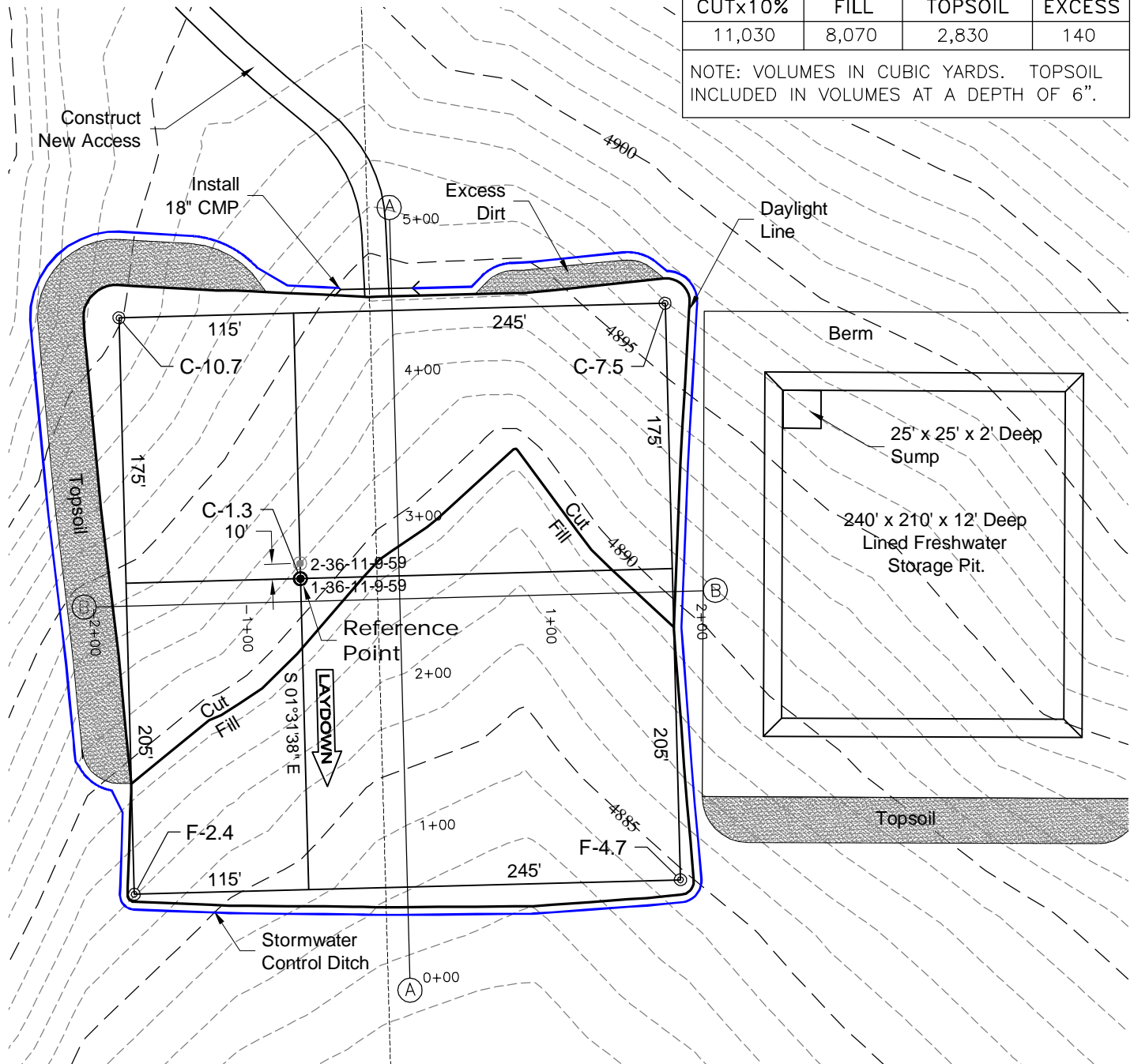
PAD 360'X380' ELEV= 4889.4'

DISTURBED AREA= 4.4± ACRES

ESTIMATED DIRT QUANTITIES

CUTx10%	FILL	TOPSOIL	EXCESS
11,030	8,070	2,830	140

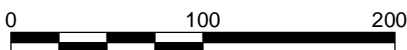
NOTE: VOLUMES IN CUBIC YARDS. TOPSOIL INCLUDED IN VOLUMES AT A DEPTH OF 6".



NOTE:
10% ALLOWANCE IS MADE FOR SOIL EXPANSION.



North



Graphic Scale in Feet
1" = 100'

7/16/12



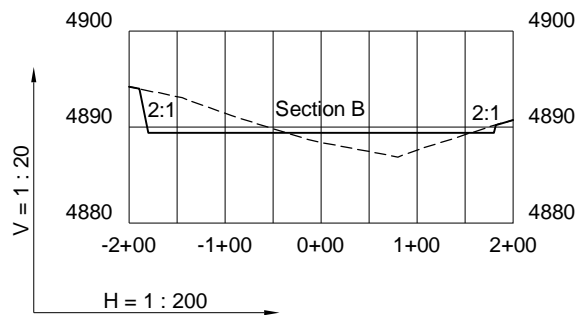
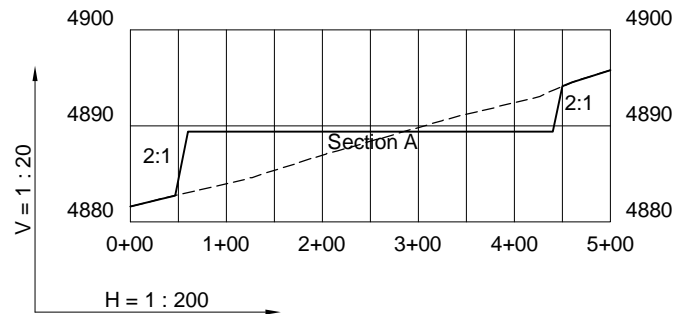
LAND SURVEYING AND MAPPING
LAFAYETTE - WINTER PARK
Ph 303 666 0379 Fx 303 665 6320

CARRIZO OIL & GAS, INC
CASTOR 36-11-9-59 PAD

NW1/4 NW1/4 SEC. 36 T9N R59W
6th PM WELD COUNTY COLORADO

CONSTRUCTION LAYOUT DRAWING

2 of 2



7/16/12

----- Existing Ground
 _____ Proposed Grade



CARRIZO OIL & GAS, INC
CASTOR 36-11-9-59 PAD

NW1/4 NW1/4 SEC. 36 T9N R59W
6th PM WELD COUNTY COLORADO