
WILLIAMS PRODUCTION RMT INC - EBUS

SP 514-13

Cement Surface Casing
11-Aug-2011

Job Site Documents

The Road to Excellence Starts with Safety

Sold To #: 300721	Ship To #: 2865867	Quote #:	Sales Order #: 8324410
Customer: WILLIAMS PRODUCTION RMT INC - EBUS	Customer Rep: Schultz, Mike		
Well Name: SP	Well #: 514-13	API/UWI #: 05-045-20420	
Field:	City (SAP): PARACHUTE	County/Parish:	State: COLORADO
Lat: N 39.435 deg. OR N 39 deg. 26 min. 5.831 secs.	Long: E 107.955 deg. OR E 107 deg. 57 min. 17.093 secs.		
Contractor: H&P 271	Rig/Platform Name/Num: H&P 271		
Job Purpose: Cement Surface Casing			
Well Type: Development Well	Job Type: Cement Surface Casing		
Sales Person: KOHL, KYLE	Srv Supervisor: ERIC CARTER	MBU ID Emp #: 345598	

Job Personnel

HES Emp Name	Exp Hrs	Emp #	HES Emp Name	Exp Hrs	Emp #	HES Emp Name	Exp Hrs	Emp #
CARTER, ERIC Earl	20.5	345598	JAMISON, PRICE W	20.5	229155	JENSEN, SHANE Lynn	20.5	441759
VANALSTYNE, TROY L	20.5	420256						

Equipment

HES Unit #	Distance-1 way	HES Unit #	Distance-1 way	HES Unit #	Distance-1 way	HES Unit #	Distance-1 way
10804579	60 mile	10867322	60 mile	10867425	60 mile	10871245	60 mile
10897891	60 mile	10951251	60 mile	11360881	60 mile		

Job Hours

Date	On Location Hours	Operating Hours	Date	On Location Hours	Operating Hours	Date	On Location Hours	Operating Hours
8/11/11	20.5	1						

TOTAL Total is the sum of each column separately

Job

Formation Name	Formation Depth (MD)	Top	Bottom	1590 FT.	Called Out	Date	Time	Time Zone
Form Type			BHST		On Location	11 - Aug - 2011	02:30	MST
Job depth MD	1590. ft		Job Depth TVD	1590. ft	Job Started	11 - Aug - 2011	21:13	MST
Water Depth			Wk Ht Above Floor	5. ft	Job Completed	11 - Aug - 2011	22:08	MST
Perforation Depth (MD)	From		To		Departed Loc	11 - Aug - 2011	23:00	MST

Well Data

Description	New / Used	Max pressure psig	Size in	ID in	Weight lbm/ft	Thread	Grade	Top MD ft	Bottom MD ft	Top TVD ft	Bottom TVD ft
OPEN HOLE				13.5				.	1590.		
SURFACE CASING	Unknown		9.625	9.001	32.3		H-40	.	1575.		

Sales/Rental/3rd Party (HES)

Description	Qty	Qty uom	Depth	Supplier
PLUG,CMTG,TOP,9 5/8,HWE,8.16 MIN/9.06 MA	1	EA		

Tools and Accessories

Type	Size	Qty	Make	Depth	Type	Size	Qty	Make	Depth	Type	Size	Qty	Make
Guide Shoe					Packer					Top Plug	9.625	1	
Float Shoe					Bridge Plug					Bottom Plug			
Float Collar					Retainer					SSR plug set			
Insert Float										Plug Container	9.625	1	
Stage Tool										Centralizers			

Miscellaneous Materials

Gelling Agt	Conc	Surfactant	Conc	Acid Type	Qty	Conc	%
Treatment Fld	Conc	Inhibitor	Conc	Sand Type	Size		Qty

Fluid Data										
Stage/Plug #: 1										
Fluid #	Stage Type	Fluid Name	Qty	Qty uom	Mixing Density lbm/gal	Yield ft ³ /sk	Mix Fluid Gal/sk	Rate bbl/min	Total Mix Fluid Gal/sk	
1	Water Spacer		20.00	bbl	8.34	.0	.0	6		
2	Lead Cement	VERSACEM (TM) SYSTEM (452010)	260.0	sacks	12.3	2.38	13.75	8	13.75	
3	Tail Cement	VERSACEM (TM) SYSTEM (452010)	160.0	sacks	12.8	2.11	11.75	8	11.75	
4	Displacement Fluid		120.6	bbl	8.34	.0	.0	10		
Calculated Values		Pressures		Volumes						
Displacement	120.6	Shut In: Instant		Lost Returns	NONE	Cement Slurry	170.3	Pad		
Top Of Cement	SURFACE	5 Min		Cement Returns	25	Actual Displacement	120.6	Treatment		
Frac Gradient		15 Min		Spacers	20	Load and Breakdown		Total Job	410.9	
Rates										
Circulating	RIG	Mixing	8	Displacement	10	Avg. Job		9		
Cement Left In Pipe	Amount	42.6 ft	Reason	Shoe Joint						
Frac Ring # 1 @	ID	Frac ring # 2 @	ID	Frac Ring # 3 @	ID	Frac Ring # 4 @	ID			
The Information Stated Herein Is Correct				Customer Representative Signature						

The Road to Excellence Starts with Safety

Sold To #: 300721		Ship To #: 2865867		Quote #:		Sales Order #: 8324410	
Customer: WILLIAMS PRODUCTION RMT INC - EBUS				Customer Rep: Schultz, Mike			
Well Name: SP			Well #: 514-13			API/UWI #: 05-045-20420	
Field:		City (SAP): PARACHUTE		County/Parish:		State: COLORADO	
Legal Description:							
Lat: N 39.435 deg. OR N 39 deg. 26 min. 5.831 secs.				Long: E 107.955 deg. OR E 107 deg. 57 min. 17.093 secs.			
Contractor: H&P 271			Rig/Platform Name/Num: H&P 271				
Job Purpose: Cement Surface Casing						Ticket Amount:	
Well Type: Development Well			Job Type: Cement Surface Casing				
Sales Person: KOHL, KYLE			Srvc Supervisor: ERIC CARTER			MBU ID Emp #: 345598	

Activity Description	Date/Time	Cht #	Rate bbl/ min	Volume bbl		Pressure psig		Comments
				Stage	Total	Tubing	Casing	
Arrive at Location from Other Job or Site	08/11/2011 02:30							RIG PULLING DP
Assessment Of Location Safety Meeting	08/11/2011 02:40							ATTENDED BY ALL HES CREW
Other	08/11/2011 02:50							SPOT EQUIPMENT
Pre-Rig Up Safety Meeting	08/11/2011 03:00							ATTENDED BY ALL HES CREW
Rig-Up Equipment	08/11/2011 03:10							
Pre-Job Safety Meeting	08/11/2011 20:45							ATTENDED BY ALL HES CREW, RIG CREW AND COMPANY REP
Start Job	08/11/2011 21:13							TP 1575', TD 1590', SJ 42.65', FC 1532.35', MW 9.6 PPG, CASING 9.625", 32.3#, H-40, HOLE 13.5"
Prime Pumps	08/11/2011 21:13		2	2			90.0	
Test Lines	08/11/2011 21:15							PRESSURED UP TO 1854 PSI, PRESSURE HELD
Pump Spacer 1	08/11/2011 21:17		6	20			196.0	FRESH WATER
Pump Lead Cement	08/11/2011 21:23		8	110.2			390.0	260 SKS MIXED AT 12.3 PPG, 2.38 YIELD, 13.75 GL/SK
Pump Tail Cement	08/11/2011 21:36		8	60.1			400.0	160 SKS MIXED AT 12.8 PPG, 2.11 YIELD, 11.75 GL/SK
Shutdown	08/11/2011 21:43							
Drop Top Plug	08/11/2011 21:46							COMPANY REP VERIFIED THAT PLUG LAUNCHED

Activity Description	Date/Time	Cht #	Rate bbl/ min	Volume bbl		Pressure psig		Comments
				Stage	Total	Tubing	Casing	
Pump Displacement	08/11/2011 21:47		10	110.6			655.0	FRESH WATER
Slow Rate	08/11/2011 22:01		2	10			370.0	
Bump Plug	08/11/2011 22:04						910.0	PLUG LANDED
Check Floats	08/11/2011 22:07							FLOATS HELD
End Job	08/11/2011 22:08							GOOD CIRCULATION THROUGH OUT JOB, 25 BBLS CEMENT TO SURFACE, PIPE WAS NOT MOVED DURING JOB
Post-Job Safety Meeting (Pre Rig-Down)	08/11/2011 22:10							ATTENDED BY ALL HES CREW
Rig-Down Equipment	08/11/2011 22:20							
Depart Location Safety Meeting	08/11/2011 22:50							ATTENDED BY ALL HES CREW
Crew Leave Location	08/11/2011 23:00							THANK YOU FOR USING HALLIBURTON CEMENT, ERIC CARTER AND CREW

JOB PROCEDURE

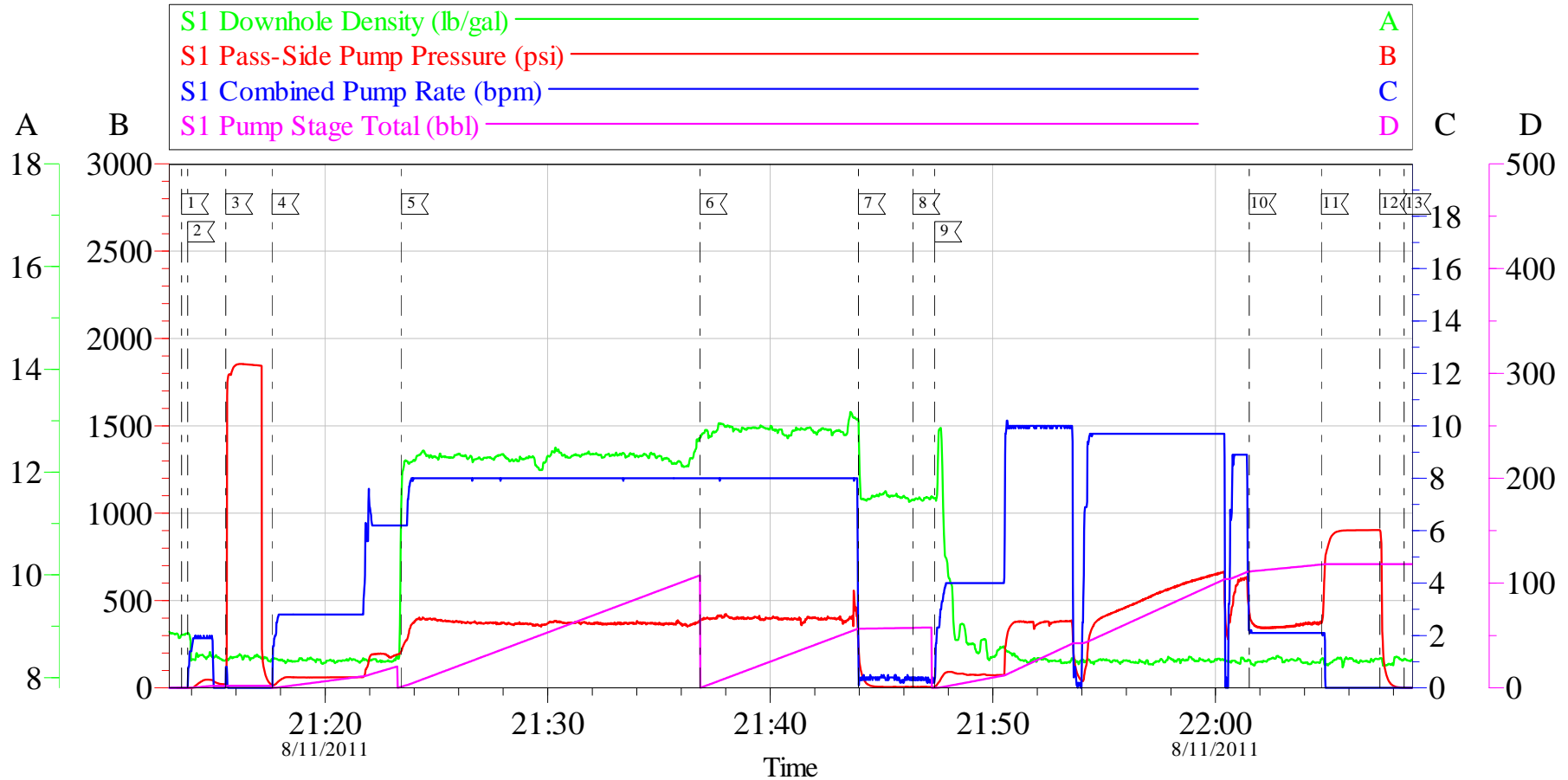
H+P 271

Pre-Planned Job Procedure Single Stage

EVENT #	EVENT	VOLUME	SACKS	WEIGHT	YIELD	GAL/ SK
1	Start Job					
6	Test Lines	2000.0				
9	H2O Spacer	20.0				
13	Lead Cement	110.2	260	12.3	2.38	13.75
15	Tail Cement	60.1	160	12.8	2.11	11.75
	SHUTDOWN					
	DROP PLUG					
22	Displacement	120.6		Mud Wt.	9.6	
1085	Slow Rate	110.6		Casing	9.625	32.3
26	Land Plug	332		Open Hole	13.5	
	Release Psi / Job Over	832				
	Check Floats					
2	END JOB					
				Disp Fluid	8.33	
			Do Not Overdisplace			
DISPLACEMENT	TOTAL PIPE	SHOE JOINT LENGTH	ANN FACTOR	BBL/FT	H2O REQ.	
120.60	1575	42.65	0.0870	0.0787	270	
PSI to Lift Pipe	596.6	*****Use Mud Scales on Each Tier*****				
Total Displacement	120.60					
CALCULATED DIFFERENTIAL PSI		332	TOTAL FLUID PUMPED		311	
Collapse	1400	Burst	2270	S.O.#	8324410	
HOT	652.5	TOT	922.5	Company Rep: MIKE OLSEN		
Bbls to Pit	30.0					

WILLIAMS

9.625" SURFACE/SP 514-13



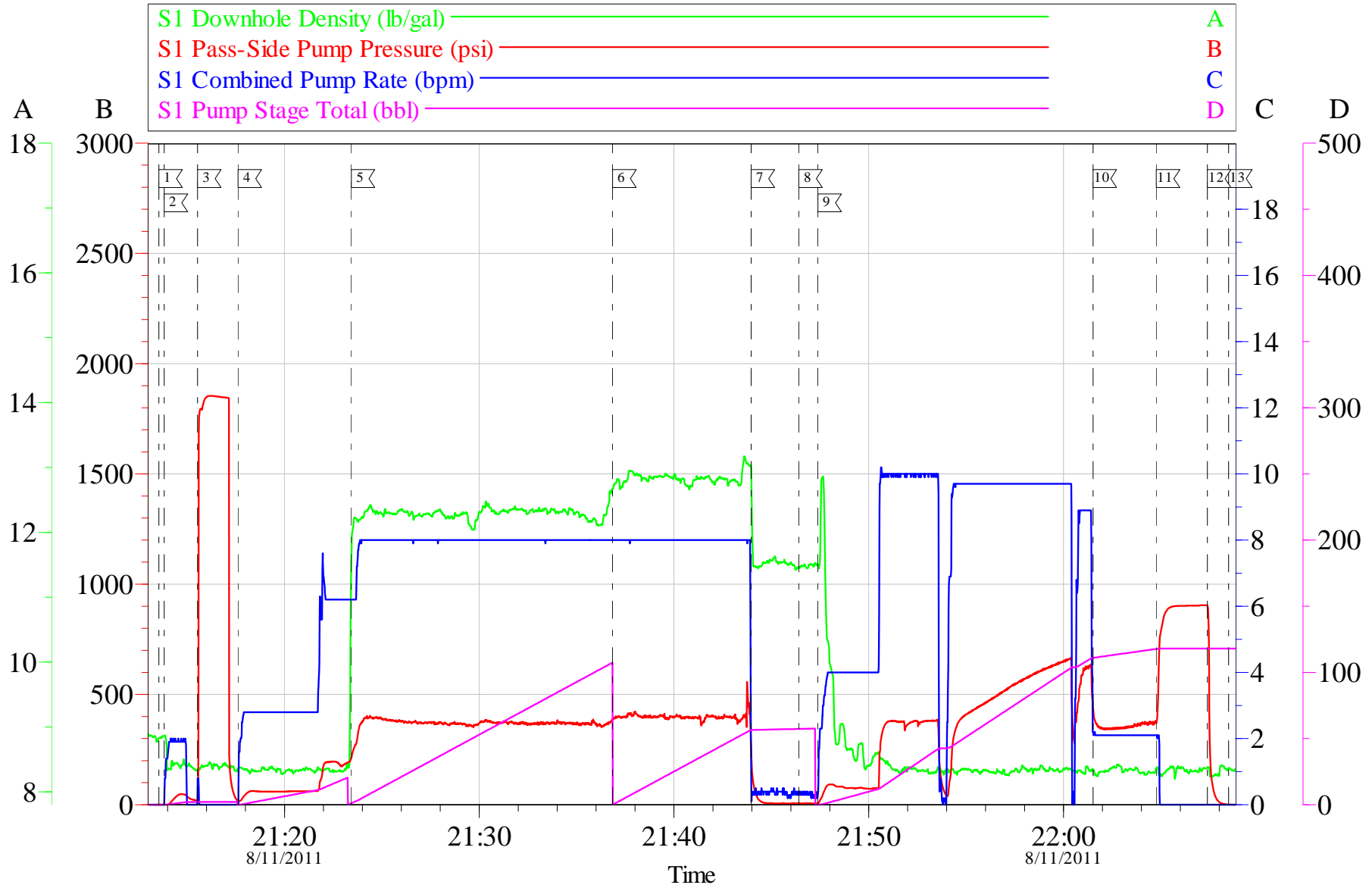
Local Event Log					
1	START JOB	21:13:33	2	FILL LINES	21:13:49
3	TEST LINES	21:15:32	4	PUMP H2O SPACER	21:17:37
5	PUMP LEAD CEMENT	21:23:26	6	PUMP TAIL CEMENT	21:36:51
7	SHUTDOWN	21:43:58	8	DROP TOP PLUG	21:46:24
9	PUMP DISPLACEMENT	21:47:23	10	SLOW RATE	22:01:31
11	BUMP PLUG	22:04:46	12	CHECK FLOATS	22:07:24
13	END JOB	22:08:29			

Customer:	WILLIAMS PRODUCTION RMT INC - EBUS	Job Date:	11-Aug-2011	Sales Order #:	8324410
Well Description:	SP 514-13	Job Type:	SURFACE	ADC Used:	YES
Company Rep:	MIKE OLSEN	Cement Supervisor:	ERIC CARTER	Elite #/Operator:	8/SHANE JENSEN

OptiCem v6.4.0
11-Aug-11 22:23

WILLIAMS

9.625" SURFACE/SP 514-13



Customer: WILLIAMS PRODUCTION RMT INC - EBUS
 Well Description: SP 514-13
 Company Rep: MIKE OLSEN

Job Date: 11-Aug-2011
 Job Type: SURFACE
 Cement Supervisor: ERIC CARTER

Sales Order #: 8324410
 ADC Used: YES
 Elite #/Operator: 8/SHANE JENSEN

OptiCem v6.4.0
 11-Aug-11 22:24

HALLIBURTON

Water Analysis Report

Company: WILLIAMS

Submitted by: ERIC CARTER

Attention: J.Trout

Lease H+P 271

Well # SP 513-14

Date: 8/11/2011

Date Rec.: 8/11/2011

S.O.# 8324410

Job Type: SURFACE

Specific Gravity	<i>MAX</i>	<i>1</i>
pH	<i>8</i>	<i>7</i>
Potassium (K)	<i>5000</i>	<i>0</i> Mg / L
Hrdness	<i>500</i>	<i>425</i> Mg / L
Iron (FE2)	<i>300</i>	<i>0</i> Mg / L
Chlorides (Cl)	<i>3000</i>	<i>0</i> Mg / L
Sulfates (SO ₄)	<i>1500</i>	<i><200</i> Mg / L
Temp	<i>40-80</i>	<i>76</i> Deg
Total Dissolved Solids		<i>450</i> Mg / L

Respectfully: ERIC CARTER

Title: CEMENTING SUPERVISOR

Location: Grand Junction, CO

NOTICE: This report is limited to the described sample tested. Any person using or relying on this report agrees that Halliburton shall not be liable for any loss or damage whether due to act or omission resulting from such report or it

Sales Order #: 8324410	Line Item: 10	Survey Conducted Date: 8/11/2011
Customer: WILLIAMS PRODUCTION RMT INC - EBUS		Job Type (BOM): CMT SURFACE CASING BOM
Customer Representative: MIKE OLSEN		API / UWI: (leave blank if unknown)
Well Name: SP		Well Number: 514-13
Well Type: DEVELOP	Well Country:	
H2S Present:	Well State:	Well County:

Dear Customer,

We hope that you were satisfied with the service quality of this job performed by Halliburton. It is the aim of our management and service personnel to deliver equipment and service of a standard unmatched in the service sector of the energy industry.

Please take the time to let us know if our performance met with your satisfaction. Please be as critical as possible to ensure we constantly improve our service. Your comments are of great value to us and are intended for the exclusive use of Halliburton.

CUSTOMER SATISFACTION SURVEY

CATEGORY	CUSTOMER SATISFACTION RESPONSE	
Survey Conducted Date	The date the survey was conducted	8/11/2011
Survey Interviewer	The survey interviewer is the person who initiated the survey.	ERIC CARTER (HX15491)
Customer Participation	Did the customer participate in this survey? (Y/N)	Yes
Customer Representative	Enter the Customer representative name	MIKE OLSEN
HSE	Was our HSE performance satisfactory? Circle Y or N	Yes
Equipment	Were you satisfied with our Equipment? Circle Y or N	Yes
Personnel	Were you satisfied with our people? Circle Y or N	Yes
Customer Comment	Customer's Comment	GREAT JOB
Job DVA	Did we provide job DVA above our normal service today? Circle Y or N	No
Time	Please enter hours in decimal format to nearest quarter hour.	
Other	Enter short text for other efficiencies gained.	
Customer Initials	Customer's Initials	
Please provide details	Please describe how the job efficiencies were gained.	

CUSTOMER SIGNATURE

Sales Order #: 8324410	Line Item: 10	Survey Conducted Date: 8/11/2011
Customer: WILLIAMS PRODUCTION RMT INC - EBUS		Job Type (BOM): CMT SURFACE CASING BOM
Customer Representative: MIKE OLSEN		API / UWI: (leave blank if unknown)
Well Name: SP		Well Number: 514-13
Well Type: DEVELOP	Well Country:	
H2S Present:	Well State:	Well County:

KEY PERFORMANCE INDICATORS

General	
Survey Conducted Date The date the survey was conducted	8/11/2011

Cementing KPI Survey	
Type of Job Select the type of job. (Cementing or Non-Cementing)	0
Select the Maximum Deviation range for this Job What is the highest deviation for the job you just completed? This may not be the maximum well deviation.	Vertical
Total Operating Time (hours) Total Operating Hours Including Rig-up, Pumping, Rig-down. Enter in decimal format.	3
HSE Incident, Accident, Injury HSE Incident, Accident, Injury. This should be recordable incidents only.	No
Was the job purpose achieved? Was the job delivered correctly as per customer agreed design?	Yes
Operating Hours (Pumping Hours) Total number of hours pumping fluid on this job. Enter in decimal format.	1
Customer Non-Productive Rig Time (hrs) Lost time due to Halliburton in the start, execution, or completion of an ordered service or product, or delays in a follow-on service. Enter in decimal format. 0 if none.	0
Type of Rig Classification Job Was Performed Type Of Rig (classification) Job Was Performed On	Drilling Rig (Portable)
Number Of JSAs Performed Number Of Jsas Performed	5
Number of Unplanned Shutdowns Unplanned shutdown is when injection stops for any period of time.	0
Was this a Primary Cement Job (Yes / No)	Yes

Sales Order #: 8324410	Line Item: 10	Survey Conducted Date: 8/11/2011
Customer: WILLIAMS PRODUCTION RMT INC - EBUS		Job Type (BOM): CMT SURFACE CASING BOM
Customer Representative: MIKE OLSEN		API / UWI: (leave blank if unknown)
Well Name: SP		Well Number: 514-13
Well Type: DEVELOP	Well Country:	
H2S Present:	Well State:	Well County:

Primary Cement Job= Casing job, Liner job, or Tie-back job.	
Did We Run Wiper Plugs? Did We Run Top And Bottom Casing Wiper Plugs?	Top
Mixing Density of Job Stayed in Designed Density Range (0-100%) Density Range defined as +/- .20 ppg. Calculation: Total BBLs cement mixed at designed density divided by total BBLs of cement multiplied by 100	97
Was Automated Density Control Used? Was Automated Density Control (ADC) Used ?	Yes
Pump Rate (percent) of Job Stayed At Designed Pump Rate Pump Rate range defined as +/- 1bbl/min. Calculation: Total BBLs of fluid pumped at the designed rate divided by Total BBLs of fluid pumped, multiplied by 100	97
Nbr of Remedial Sqz Jobs Rqd - Competition Number Of Remedial Squeeze Jobs Required After Primary Job Performed By Competition	0
Nbr of Remedial Plug Jobs Rqd - HES Number Of Remedial Plug Jobs Needed After Primary Plug Pumped By HES	0
Nbr of Remedial Sqz Jobs Rqd - HES Number Of Remedial Squeeze Jobs Required After Primary Job Performed By HES	0