
LARAMIE ENERGY II LLC EBUSINESS

**SOUTH LEVERICH 18-05C
PICEANCE
Garfield County , Colorado**

Cement Production Casing **02-Apr-2009**

Post Job Report

The Road to Excellence Starts with Safety

Sold To #: 344919	Ship To #: 2716541	Quote #:	Sales Order #: 6481867
Customer: LARAMIE ENERGY II LLC EBUSINESS	Customer Rep: STAPLETON, GARY		
Well Name: SOUTH LEVERICH	Well #: 18-05C	API/UWI #:	
Field: PICEANCE	City (SAP): RIFLE	County/Parish: Garfield	State: Colorado
Contractor: GREYWOLF 706	Rig/Platform Name/Num: GREYWOLF 706		
Job Purpose: Cement Production Casing			
Well Type: Development Well	Job Type: Cement Production Casing		
Sales Person: HARTLEY, RICHARD	Srv Supervisor: YOUNG, JEREMY	MBU ID Emp #:	418013

Job Personnel

HES Emp Name	Exp Hrs	Emp #	HES Emp Name	Exp Hrs	Emp #	HES Emp Name	Exp Hrs	Emp #
BRUN, JUSTIN M	7	459269	DICKEY, MATTHEW Allan	7	457739	DUBON, TODD N	7	443351
HAMMOND, ANSON Perry	7	421370	HAYES, JESSE Doug	7	403601	LEIST, JAMES R	7	362787
REEVES, BRANDON W	7	287883	YOUNG, JEREMY R	7	418013			

Equipment

HES Unit #	Distance-1 way	HES Unit #	Distance-1 way	HES Unit #	Distance-1 way	HES Unit #	Distance-1 way
10025041	85 mile	10026606C	85 mile	10086132C	85 mile	10297346	85 mile
10567589C	85 mile	10624134	85 mile	10829463	85 mile	10893932	85 mile
10951249	85 mile	10995027	85 mile	11071559	85 mile		

Job Hours

Date	On Location Hours	Operating Hours	Date	On Location Hours	Operating Hours	Date	On Location Hours	Operating Hours
04/01/2009	4	3	04/02/2009	3	3			
TOTAL	Total is the sum of each column separately							

Job

Formation Name	Top	Bottom	Called Out	Date	Time	Time Zone
Formation Depth (MD)			On Location	01 - Apr - 2009	16:00	MST
Form Type	BHST		On Location	01 - Apr - 2009	20:00	MST
Job depth MD	10459. ft	Job Depth TVD	Job Started	01 - Apr - 2009	21:44	MST
Water Depth		Wk Ht Above Floor	Job Completed	02 - Apr - 2009	00:09	MST
Perforation Depth (MD)	From	To	Departed Loc	02 - Apr - 2009	03:00	MST

Well Data

Description	New / Used	Max pressure psig	Size in	ID in	Weight lbm/ft	Thread	Grade	Top MD ft	Bottom MD ft	Top TVD ft	Bottom TVD ft
-------------	------------	-------------------	---------	-------	---------------	--------	-------	-----------	--------------	------------	---------------

Sales/Rental/3rd Party (HES)

Description	Qty	Qty uom	Depth	Supplier
PLUG,CMTG,TOP,4 1/2,HWE,3.65 MIN/4.14 MA	1	EA		
ADC (AUTO DENSITY CTRL) SYS, /JOB,ZI	1	JOB		
PORT. DAS W/CEMWIN;ACQUIRE W/HES, ZI	1	JOB		
MUD FLUSH III	80	LB		

Tools and Accessories

Type	Size	Qty	Make	Depth	Type	Size	Qty	Make	Depth	Type	Size	Qty	Make
Guide Shoe					Packer					Top Plug	4.5	1	HES
Float Shoe					Bridge Plug					Bottom Plug			
Float Collar					Retainer					SSR plug set			
Insert Float										Plug Container	4.5	1	HES
Stage Tool										Centralizers			

Miscellaneous Materials

Gelling Agt	Conc	Surfactant	Conc	Acid Type	Qty	Conc	%
Treatment Fld	Conc	Inhibitor	Conc	Sand Type	Size	Qty	

Fluid Data									
Stage/Plug #: 1									
Fluid #	Stage Type	Fluid Name	Qty	Qty uom	Mixing Density lbm/gal	Yield ft ³ /sk	Mix Fluid Gal/sk	Rate bbl/min	Total Mix Fluid Gal/sk
1	H2O SPACER		10.00	bbl	8.33	.0	.0	.0	
2	MUD FLUSH	MUD FLUSH - ZI - SBM (13383)	20.00	bbl	8.4	.0	.0	.0	
3	H2O SPACER		10.00	bbl	8.33	.0	.0	.0	
4	SUPER FLUSH 101	SUPER FLUSH 101 - SBM (12199)	30.00	bbl	10.	.0	.0	.0	
5	H2O SPACER		10.00	bbl	8.33	.0	.0	.0	
6	Lead Cement	ECONOCEM (TM) SYSTEM (452992)	1075.0	sacks	11.5	2.32	13.06		
7	Tail Cement	VARICEM (TM) CEMENT (452009)	345.0	sacks	13.5	1.74	7.62		7.62
8	DISPLACEMENT		162.00	bbl	8.4	.0	.0	.0	
Calculated Values		Pressures		Volumes					
Displacement	161.5	Shut In: Instant		Lost Returns	0	Cement Slurry	551	Pad	
Top Of Cement	0	5 Min		Cement Returns	0	Actual Displacement	161.5	Treatment	
Frac Gradient		15 Min		Spacers	80	Load and Breakdown		Total Job	
Rates									
Circulating	RIG	Mixing	7	Displacement	7.5	Avg. Job	7.25		
Cement Left In Pipe	Amount	42 ft	Reason	Shoe Joint					
Frac Ring # 1 @	ID	Frac ring # 2 @	ID	Frac Ring # 3 @	ID	Frac Ring # 4 @	ID		
The Information Stated Herein Is Correct				Customer Representative Signature					

The Road to Excellence Starts with Safety

Sold To #: 344919		Ship To #: 2716541		Quote #:		Sales Order #: 6481867	
Customer: LARAMIE ENERGY II LLC EBUSINESS				Customer Rep: STAPLETON, GARY			
Well Name: SOUTH LEVERICH			Well #: 18-05C			API/UWI #:	
Field: PICEANCE		City (SAP): RIFLE		County/Parish: Garfield			State: Colorado
Legal Description:							
Lat:				Long:			
Contractor: GREYWOLF 706			Rig/Platform Name/Num: GREYWOLF 706				
Job Purpose: Cement Production Casing						Ticket Amount:	
Well Type: Development Well			Job Type: Cement Production Casing				
Sales Person: HARTLEY, RICHARD			Srv Supervisor: YOUNG, JEREMY			MBU ID Emp #: 418013	

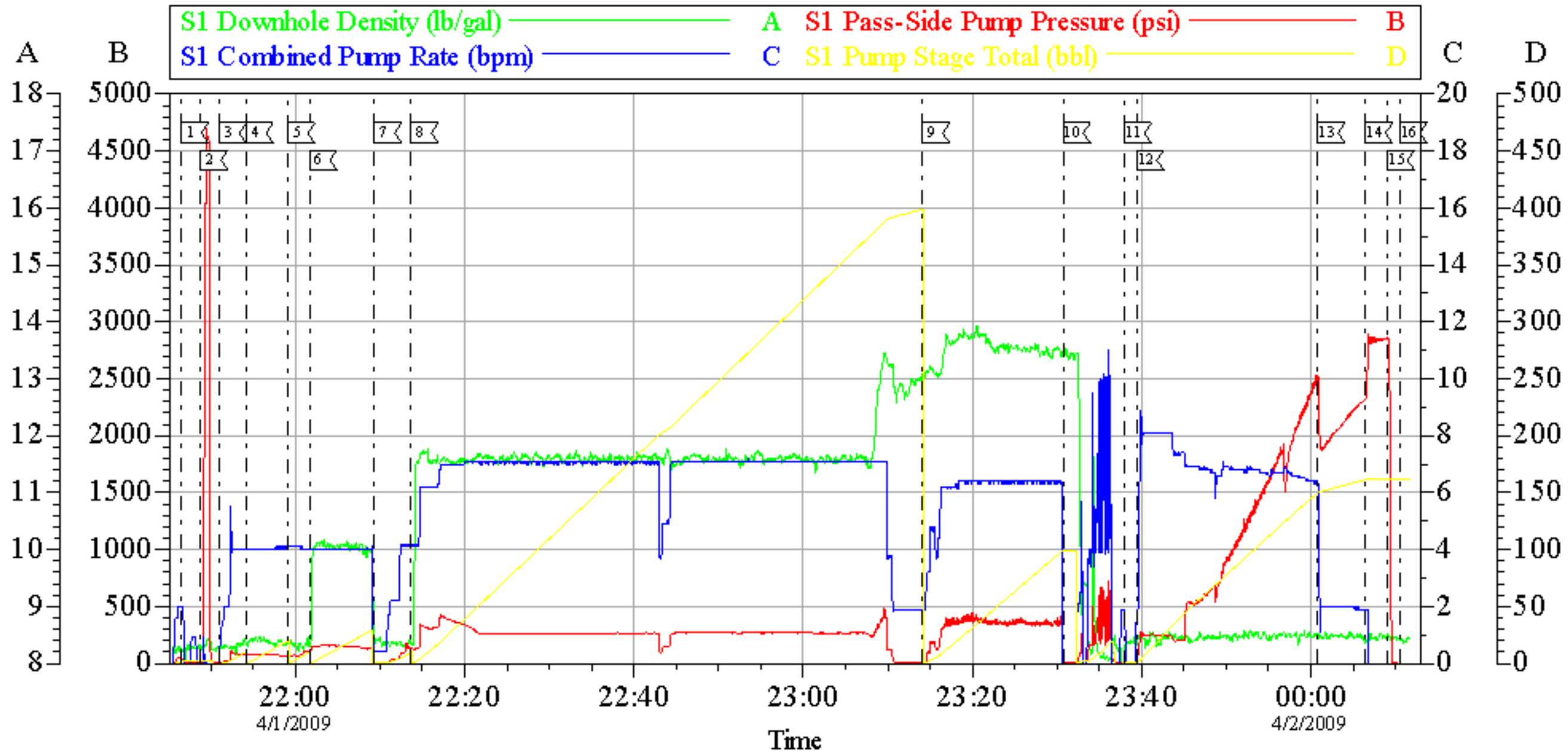
Activity Description	Date/Time	Cht #	Rate bbl/min	Volume bbl		Pressure psig		Comments
				Stage	Total	Tubing	Casing	
Call Out	04/01/2009 16:00							TD 10461 FT, TP 10459 FT, SHOE 42 FT, HOLE 7 7/8 IN, MUD WT 9.2 PPG, CSG 4 1/2 11.6#
Pre-Convoy Safety Meeting	04/01/2009 17:30							WITH ALL HES PERSONNELL
Crew Leave Yard	04/01/2009 18:00							
Arrive At Loc	04/01/2009 20:00							RIG WAS CIRCULATING UPON HES ARRIVAL.
Assessment Of Location Safety Meeting	04/01/2009 20:10							WITH ALL HES PERSONNELL
Pre-Rig Up Safety Meeting	04/01/2009 20:15							WITH ALL HES PERSONNELL
Rig-Up Completed	04/01/2009 21:15							
Pre-Job Safety Meeting	04/01/2009 21:30							WITH ALL PERSONNELL ON LOCATION
Start Job	04/01/2009 21:46							RIG CIRCULATED 3 HRS PRIOR TO CEMENTING. GOOD RETURNS WITH 300 CFM'S. RIG SHUT OFF AIR WHEN HES SHUT DOWN TO WASH LINES, HES NEVER GOT RETURNS BACK AFTER AIR WAS SHUT OFF. CONTINUED AS DESIGNED.
Pressure Test	04/01/2009 21:48							4700 PSI

Activity Description	Date/Time	Cht #	Rate bbl/min	Volume bbl		Pressure psig		Comments
				Stage	Total	Tubing	Casing	
Pump Spacer 1	04/01/2009 21:51		4	10			90.0	FRESH WATER
Pump Spacer 1	04/01/2009 21:54		4	20			83.0	MUDFLUSH III
Pump Spacer 1	04/01/2009 21:59		4	10			70.0	FRESH WATER
Pump Spacer 1	04/01/2009 22:01		4	30			120.0	SUPERFLUSH 101
Pump Spacer 1	04/01/2009 22:09		4	10			90.0	FRESH WATER
Pump Lead Cement	04/01/2009 22:13		7	444.2			265.0	1075 SKS @ 11.5 PPG, 2.32 FT3/SK, 13.06 GAL/SK.
Pump Tail Cement	04/01/2009 23:14		6	107			360.0	345 SKS @ 13.5 PPG, 1.74 FT3/SK, 7.62 GAL/SK. HAD TO SLOW RATE DUE TO CEMENT DELIVERY. PROBLEM FIXED AND PROCEEDED AS DESIGNED.
Shutdown	04/01/2009 23:30							WASH PUMUPS AND LINES TO PIT.
Drop Top Plug	04/01/2009 23:37							PLUG LAUNCHED
Pump Displacement	04/01/2009 23:39		7.5	161.5			2513.0	FRESH WATER WITH 75 LBS PER 10 BBLS
Slow Rate	04/02/2009 00:00		2	150			1896.0	
Bump Plug	04/02/2009 00:06		2	161.5			2250.0	PLUG BUMPED
Check Floats	04/02/2009 00:09						2820.0	FLOATS HOLDING
End Job	04/02/2009 00:10							PIPE WAS NOT RECIPROCATED DURING CEMENTING.
Pre-Rig Down Safety Meeting	04/02/2009 00:20							WITH ALL HES PERSONNELL
Rig-Down Completed	04/02/2009 02:30							
Pre-Convoy Safety Meeting	04/02/2009 02:45							WITH ALL HES PERSONELL
Crew Leave Location	04/02/2009 03:00							

Activity Description	Date/Time	Cht #	Rate bbl/ min	Volume bbl		Pressure psig		Comments
				Stage	Total	Tubing	Casing	
Comment	04/02/2009 03:01							THANK YOU FOR USING HALLIBURTON CEMENT DEPARTMENT. JEREMY YOUNG, JAMES LEIST AND CREW.

LARAMIE II

4 1/2" PRODUCTION



Local Event Log					
1	START JOB	4/1/2009 21:46:31	2	PRESSURE TEST	4/1/2009 21:48:49
3	PUMP H2O SPACER	4/1/2009 21:51:00	4	PUMP MUD FLUSH SPACER	4/1/2009 21:54:10
5	PUMP H2O SPACER	4/1/2009 21:59:06	6	PUMP SUPERFLUSH SPACER	4/1/2009 22:01:42
7	PUMP H2O SPACER	4/1/2009 22:09:21	8	PUMP LEAD CMT	4/1/2009 22:13:41
9	PUMP TAIL CMT	4/1/2009 23:14:06	10	SHUT DOWN/CLEAN LINES	4/1/2009 23:30:43
11	DROP TOP PLUG	4/1/2009 23:37:57	12	PUMP DISPLACEMENT	4/1/2009 23:39:24
13	SLOW RATE	4/2/2009 00:00:48	14	BUMP PLUG	4/2/2009 00:06:26
15	CHECK FLOATS	4/2/2009 00:09:02	16	END JOB	4/2/2009 00:10:29

Customer: LARAMIE II
Well Description: 18-05C
Company Rep: GARY STAPLETON

Job Date: 01-Apr-2009
Job Type: PRODUCTION
Cement Supervisor: JEREMY YOUNG

Sales Order#: 6481867
ADC Used: YES
Elite #3 TODD DUBON

OptiCem v6.3.4
02-Apr-09 00:23