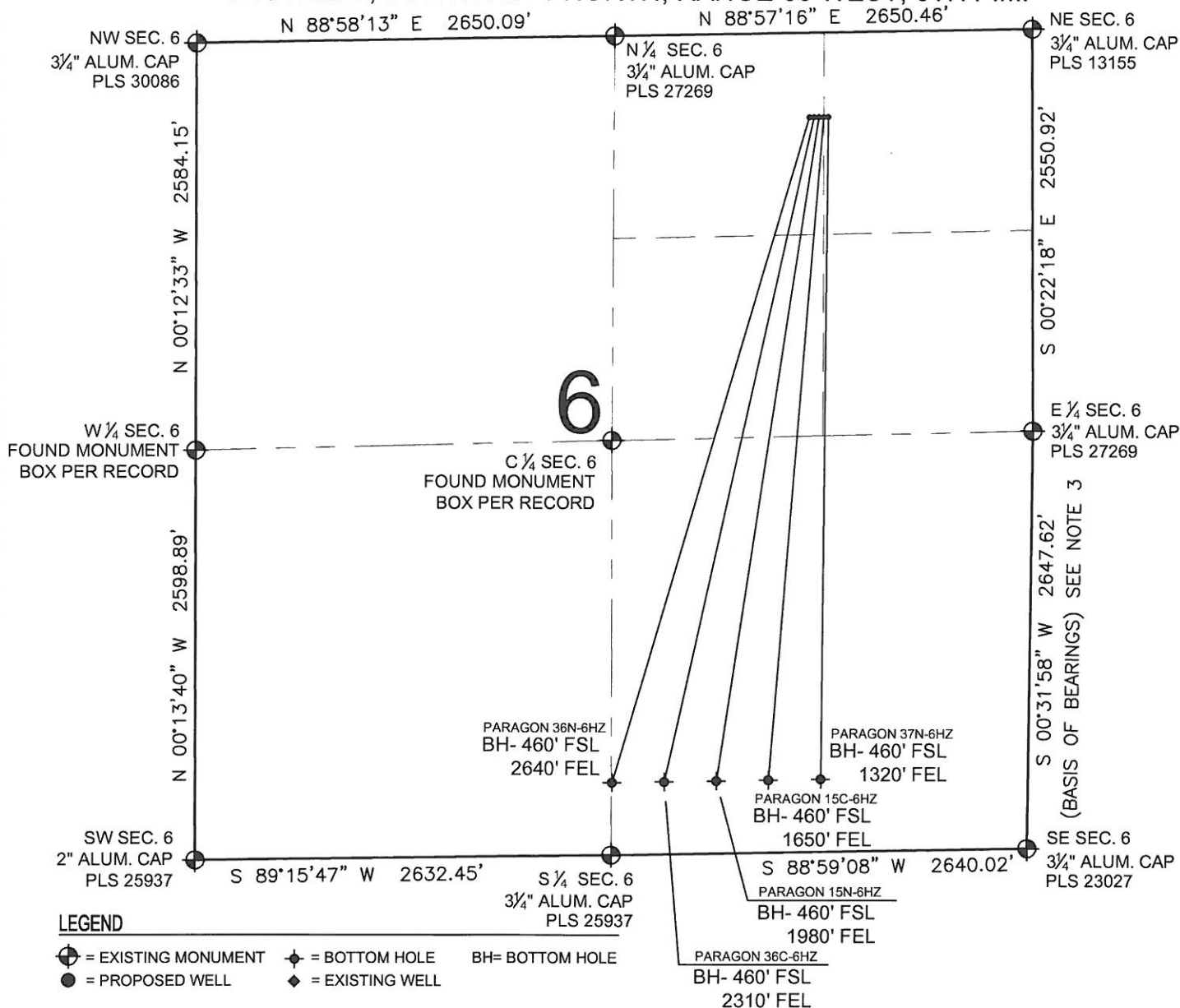


# PAD DRAWING: PARAGON 5 PAD

SECTION 6, TOWNSHIP 1 NORTH, RANGE 65 WEST, 6TH P.M.



## NOTES:

1. THIS FIELD SURVEY CONFORMS TO THE MINIMUM STANDARDS SET BY THE C.O.G.C.C., RULE NO. 215
2. HORIZONTAL POSITIONS AND ORTHOMETRIC ELEVATIONS SHOWN AT THE WELL HEAD, ARE BASED ON GPS-RTK POSITIONS DERIVED FROM MINIMUM 2-HOUR STATIC OBSERVATIONS CORRECTED BY THE NATIONAL GEODETIC SURVEY ONLINE POSITIONING USER SERVICE, O.P.U.S. DATUM: HORIZONTAL = NAD83/2007, VERTICAL = NAVD88
3. THE BASIS OF BEARINGS ARE STATE PLANE COORDINATE SYSTEM GRID BEARINGS SHOWN HEREON BETWEEN THE DESCRIBED THE MONUMENTS SHOWN HEREON.
4. GRID DISTANCES ARE SHOWN, AS MEASURED IN THE FIELD, WITH TIES TO WELLS MEASURED PERPENDICULAR TO SECTION LINES.

## NOTES:

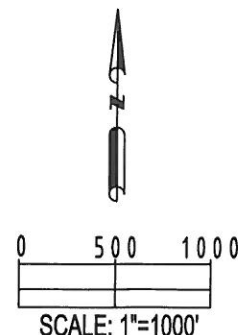
PARAGON 37N-6HZ TO BE AT 535' FNL, 1299' FEL.  
 BOTTOM HOLE AT 460' FSL & 1320' FEL.  
 PARAGON 15C-6HZ TO BE AT 535' FNL, 1329' FEL.  
 BOTTOM HOLE AT 460' FSL & 1650' FEL.  
 PARAGON 15N-6HZ TO BE AT 535' FNL, 1359' FEL.  
 BOTTOM HOLE AT 460' FSL & 1980' FEL.  
 PARAGON 36C-6HZ TO BE AT 535' FNL, 1389' FEL.  
 BOTTOM HOLE AT 460' FSL & 2310' FEL.  
 PARAGON 36N-6HZ TO BE AT 535' FNL, 1419' FEL.  
 BOTTOM HOLE AT 460' FSL & 2640' FEL.

PREPARED BY:



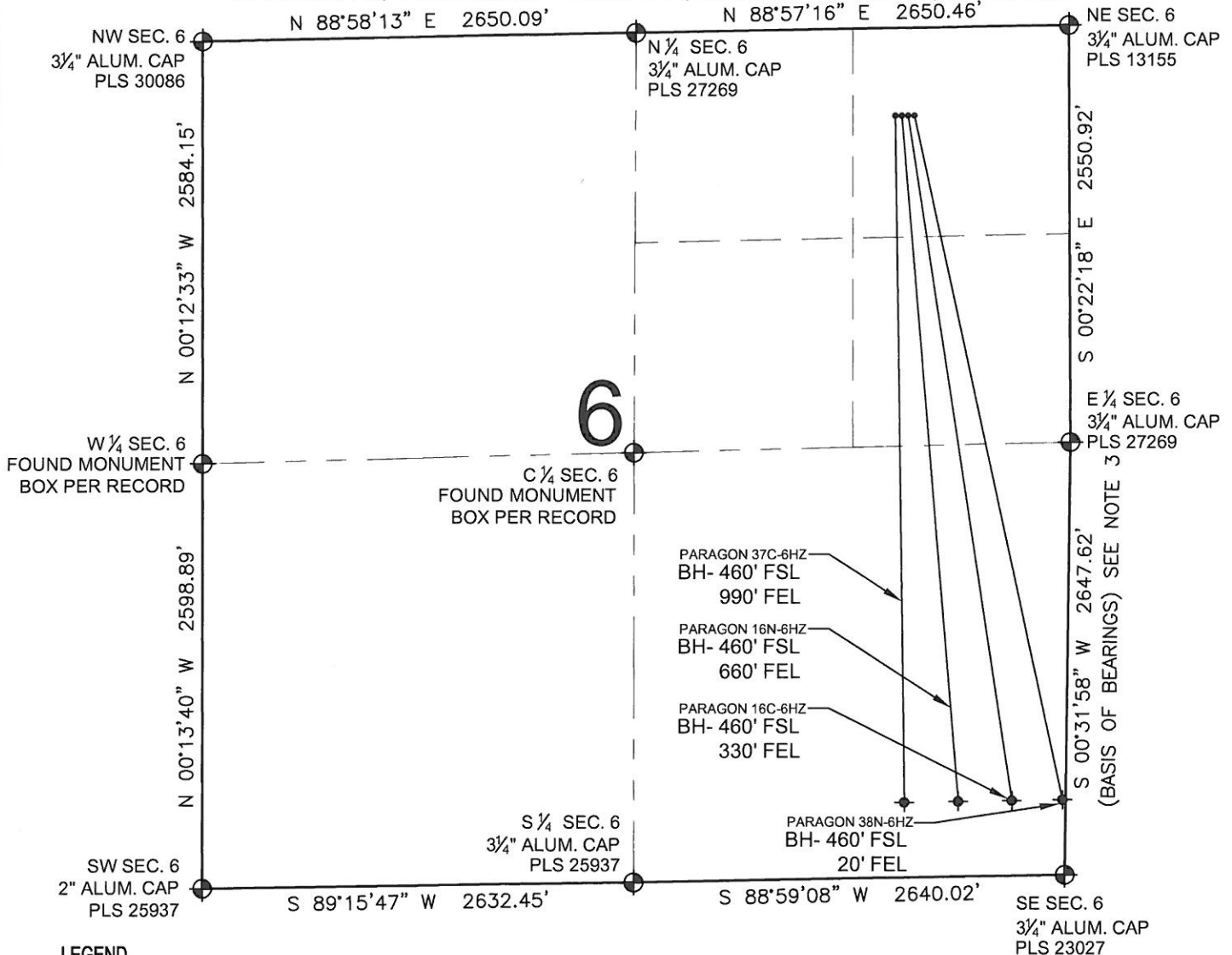
KERR-MCGEE OIL & GAS ONSHORE LP

FIELD DATE: 03-05-12	PAD NAME: PARAGON 5 PAD
DRAWING DATE: 03-10-12	SURFACE LOCATION: WELD COUNTY, COLORADO NW 1/4 NE 1/4, SEC. 6, T1N, R65W, 6TH P.M. NE 1/4 NE 1/4, SEC. 6, T1N, R65W, 6TH P.M.
BY: JAM	



# PAD DRAWING: PARAGON 4 PAD

SECTION 6, TOWNSHIP 1 NORTH, RANGE 65 WEST, 6TH P.M.



## LEGEND

- ⊕ = EXISTING MONUMENT
- ⬤ = PROPOSED WELL
- ⬤ = BOTTOM HOLE
- ⬤ = EXISTING WELL
- BH= BOTTOM HOLE

## NOTES:

- THIS FIELD SURVEY CONFORMS TO THE MINIMUM STANDARDS SET BY THE C.O.G.C.C., RULE NO. 215
- HORIZONTAL POSITIONS AND ORTHOMETRIC ELEVATIONS SHOWN AT THE WELL HEAD, ARE BASED ON GPS-RTK POSITIONS DERIVED FROM MINIMUM 2-HOUR STATIC OBSERVATIONS CORRECTED BY THE NATIONAL GEODETIC SURVEY ONLINE POSITIONING USER SERVICE, O.P.U.S. DATUM: HORIZONTAL = NAD83/2007, VERTICAL = NAVD88
- THE BASIS OF BEARINGS ARE STATE PLANE COORDINATE SYSTEM GRID BEARINGS SHOWN HEREON BETWEEN THE DESCRIBED THE MONUMENTS SHOWN HEREON.
- GRID DISTANCES ARE SHOWN, AS MEASURED IN THE FIELD, WITH TIES TO WELLS MEASURED PERPENDICULAR TO SECTION LINES.

## NOTES:

- PARAGON 38N-6HZ TO BE AT 535' FNL, 959' FEL.
- BOTTOM HOLE AT 460' FSL & 20' FEL.
- PARAGON 16C-6HZ TO BE AT 535' FNL, 989' FEL.
- BOTTOM HOLE AT 460' FSL & 330' FEL.
- PARAGON 16N-6HZ TO BE AT 535' FNL, 1019' FEL.
- BOTTOM HOLE AT 460' FSL & 660' FEL.
- PARAGON 37C-6HZ TO BE AT 535' FNL, 1049' FEL.
- BOTTOM HOLE AT 460' FSL & 990' FEL.

PREPARED BY:

**PFS**



Petroleum Field Services, LLC  
1801 W. 13th Ave.  
Denver, CO 80204

KERR-MCGEE OIL & GAS ONSHORE LP

FIELD DATE:  
03-05-12

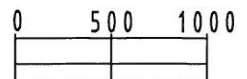
DRAWING DATE:  
03-10-12

BY:  
KAG

PAD NAME:  
PARAGON 4 PAD

SURFACE LOCATION:

WELD COUNTY, COLORADO  
NE 1/4 NE 1/4, SEC. 6, T1N, R65W, 6TH P.M.



SCALE: 1"=1000'