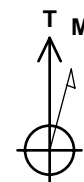
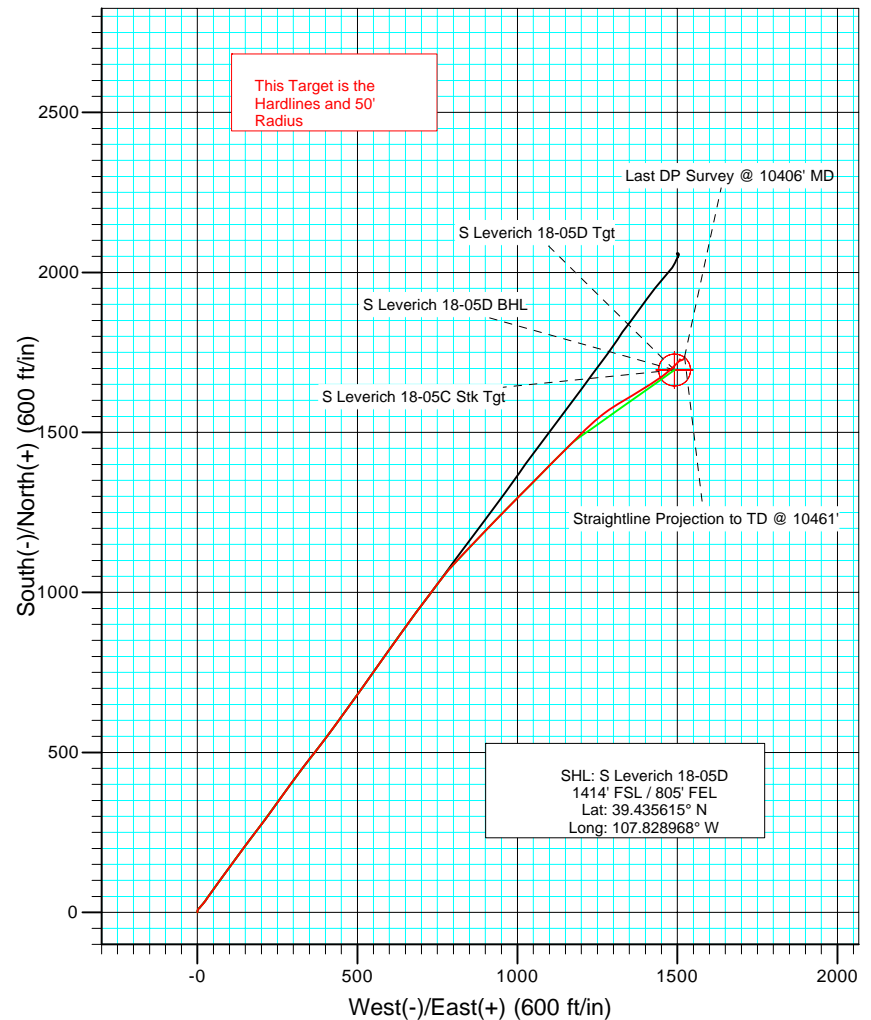
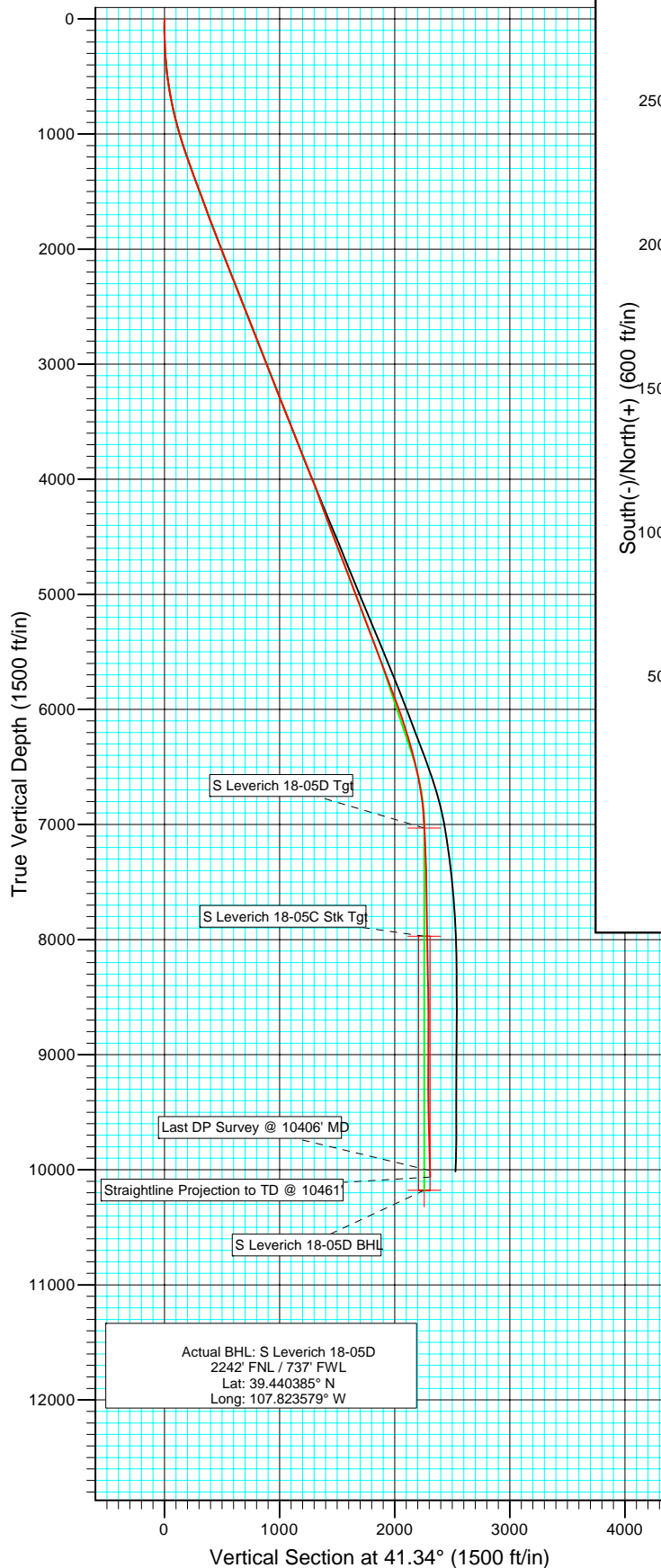




Project: Helmer Gulch  
Site: NESE Sec 13-T7S-R94W  
Well: South Leverich 18-05D (was 18-05C)  
Wellbore: Stk  
Design: Final Survey



Azimuths to True North  
Magnetic North: 10.54°

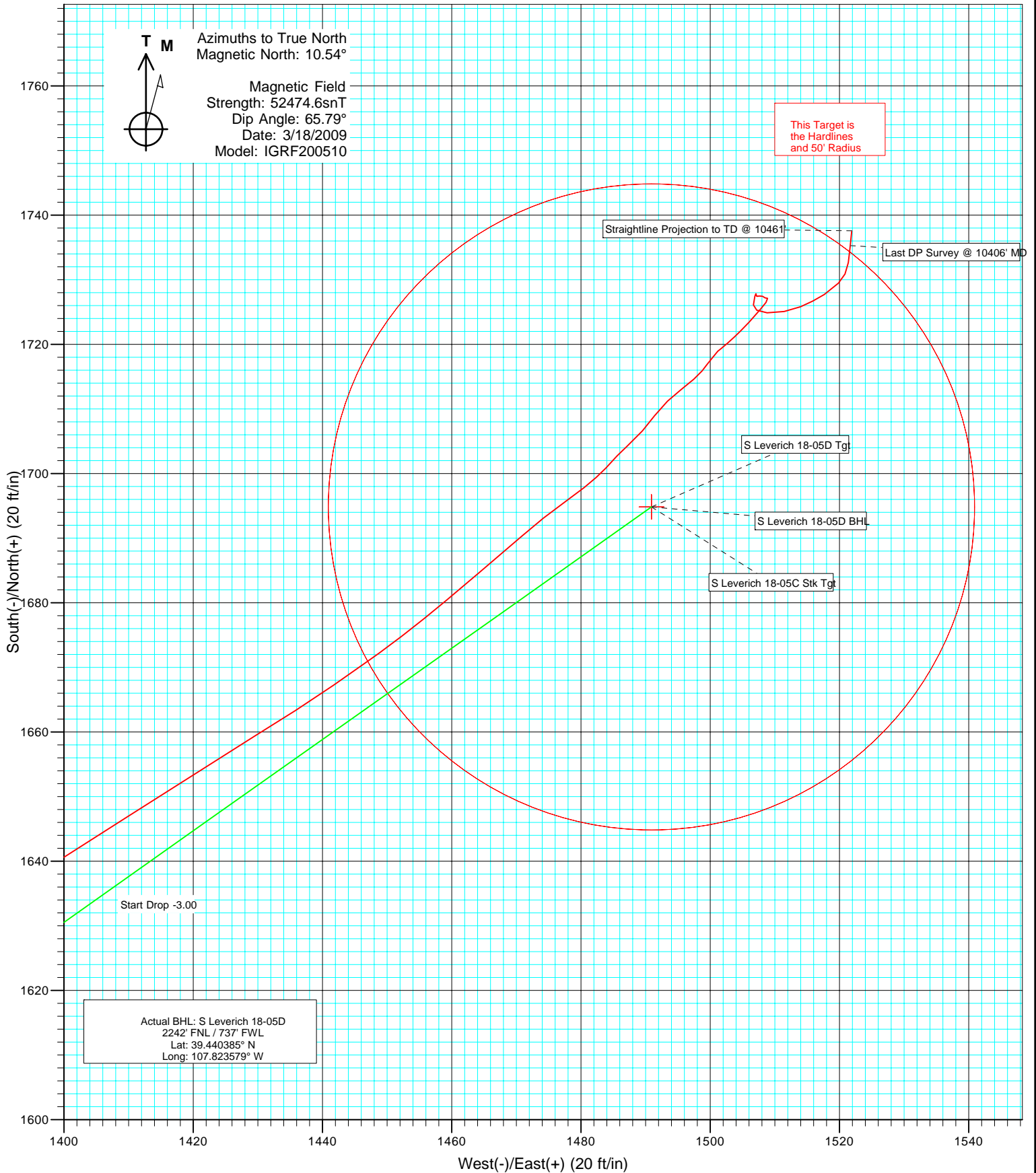
Magnetic Field  
Strength: 52474.6snT  
Dip Angle: 65.79°  
Date: 3/18/2009  
Model: IGRF200510

| Target               | Azimuth | Origin Type | N/S | E/W | TVD |
|----------------------|---------|-------------|-----|-----|-----|
| No Target (Freehand) | 41.34   | Slot        | 0.0 | 0.0 | 0.0 |

DESIGN DETAILS: Stk  
SL 18-05D KBE @ 8028.0ft (Grey Wolf 706)



Project: Helmer Gulch  
Site: NESE Sec 13-T7S-R94W  
Well: South Leverich 18-05D (was 18-05C)  
Wellbore: Stk  
Design: Stk



# Cathedral Energy Services

## Survey Report

|                  |                                    |                                     |  |
|------------------|------------------------------------|-------------------------------------|--|
| <b>Company:</b>  | Laramie Energy II, LLC.            | <b>Local Co-ordinate Reference:</b> | Well South Leverich 18-05D (was 18-05C)  |
| <b>Project:</b>  | Helmer Gulch                       | <b>TVD Reference:</b>               | SL 18-05D KBE @ 8028.0ft (Grey Wolf 706) |
| <b>Site:</b>     | NESE Sec 13-T7S-R94W               | <b>MD Reference:</b>                | SL 18-05D KBE @ 8028.0ft (Grey Wolf 706) |
| <b>Well:</b>     | South Leverich 18-05D (was 18-05C) | <b>North Reference:</b>             | True                                     |
| <b>Wellbore:</b> | Stk                                | <b>Survey Calculation Method:</b>   | Minimum Curvature                        |
| <b>Design:</b>   | Stk                                | <b>Database:</b>                    | EDM 2003.21 US Multi Users DB            |

|                    |                           |                      |                |
|--------------------|---------------------------|----------------------|----------------|
| <b>Project</b>     | Helmer Gulch              |                      |                |
| <b>Map System:</b> | US State Plane 1983       | <b>System Datum:</b> | Mean Sea Level |
| <b>Geo Datum:</b>  | North American Datum 1983 |                      |                |
| <b>Map Zone:</b>   | Colorado Central Zone     |                      |                |

|                              |                      |                     |                 |                                  |
|------------------------------|----------------------|---------------------|-----------------|----------------------------------|
| <b>Site</b>                  | NESE Sec 13-T7S-R94W |                     |                 |                                  |
| <b>Site Position:</b>        |                      | <b>Northing:</b>    | 1,591,983.75 ft | <b>Latitude:</b> 39.435615       |
| <b>From:</b>                 | Lat/Long             | <b>Easting:</b>     | 2,342,272.33 ft | <b>Longitude:</b> -107.828968    |
| <b>Position Uncertainty:</b> | 0.0 ft               | <b>Slot Radius:</b> | "               | <b>Grid Convergence:</b> -1.47 ° |

|                             |                                    |        |                            |                 |
|-----------------------------|------------------------------------|--------|----------------------------|-----------------|
| <b>Well</b>                 | South Leverich 18-05D (was 18-05C) |        |                            |                 |
| <b>Well Position</b>        | <b>+N/-S</b>                       | 0.0 ft | <b>Northing:</b>           | 1,591,983.72 ft |
|                             | <b>+E/-W</b>                       | 0.0 ft | <b>Easting:</b>            | 2,342,272.33 ft |
| <b>Position Uncertainty</b> |                                    | 0.0 ft | <b>Wellhead Elevation:</b> | ft              |
|                             |                                    |        | <b>Ground Level:</b>       | 8,007.0 ft      |

|                  |                   |                    |                        |                      |                            |
|------------------|-------------------|--------------------|------------------------|----------------------|----------------------------|
| <b>Wellbore</b>  | Stk               |                    |                        |                      |                            |
| <b>Magnetics</b> | <b>Model Name</b> | <b>Sample Date</b> | <b>Declination (°)</b> | <b>Dip Angle (°)</b> | <b>Field Strength (nT)</b> |
|                  | IGRF200510        | 3/18/2009          | 10.54                  | 65.79                | 52,475                     |

|                          |                         |               |              |                      |         |
|--------------------------|-------------------------|---------------|--------------|----------------------|---------|
| <b>Design</b>            | Stk                     |               |              |                      |         |
| <b>Audit Notes:</b>      |                         |               |              |                      |         |
| <b>Version:</b>          | 1.0                     | <b>Phase:</b> | ACTUAL       | <b>Tie On Depth:</b> | 4,259.0 |
| <b>Vertical Section:</b> | <b>Depth From (TVD)</b> | <b>+N/-S</b>  | <b>+E/-W</b> | <b>Direction</b>     |         |
|                          | (ft)                    | (ft)          | (ft)         | (°)                  |         |
|                          | 0.0                     | 0.0           | 0.0          | 41.34                |         |

|                       |                |                          |                  |                    |  |
|-----------------------|----------------|--------------------------|------------------|--------------------|--|
| <b>Survey Program</b> | <b>Date</b>    | 4/1/2009                 |                  |                    |  |
| <b>From (ft)</b>      | <b>To (ft)</b> | <b>Survey (Wellbore)</b> | <b>Tool Name</b> | <b>Description</b> |  |
| 126.0                 | 4,259.0        | Survey #1 (DD)           | Geolink MWD      | Geolink MWD        |  |
| 4,309.0               | 10,461.0       | Survey #1 (Stk)          | Geolink MWD      | Geolink MWD        |  |

|                            |                        |                    |                            |                   |                   |                              |                              |                             |                              |  |
|----------------------------|------------------------|--------------------|----------------------------|-------------------|-------------------|------------------------------|------------------------------|-----------------------------|------------------------------|--|
| <b>Survey</b>              |                        |                    |                            |                   |                   |                              |                              |                             |                              |  |
| <b>Measured Depth (ft)</b> | <b>Inclination (°)</b> | <b>Azimuth (°)</b> | <b>Vertical Depth (ft)</b> | <b>+N/-S (ft)</b> | <b>+E/-W (ft)</b> | <b>Vertical Section (ft)</b> | <b>Dogleg Rate (°/100ft)</b> | <b>Build Rate (°/100ft)</b> | <b>Formations / Comments</b> |  |
| 0.0                        | 0.00                   | 0.00               | 0.0                        | 0.0               | 0.0               | 0.0                          | 0.00                         | 0.00                        |                              |  |
| 126.0                      | 0.50                   | 315.50             | 126.0                      | 0.4               | -0.4              | 0.0                          | 0.40                         | 0.40                        |                              |  |
| 188.0                      | 2.30                   | 3.20               | 188.0                      | 1.8               | -0.5              | 1.0                          | 3.22                         | 2.90                        |                              |  |
| 249.0                      | 3.50                   | 14.40              | 248.9                      | 4.9               | 0.0               | 3.7                          | 2.17                         | 1.97                        |                              |  |
| 311.0                      | 4.00                   | 26.80              | 310.8                      | 8.6               | 1.5               | 7.4                          | 1.53                         | 0.81                        |                              |  |
| 373.0                      | 4.70                   | 45.80              | 372.6                      | 12.3              | 4.3               | 12.1                         | 2.57                         | 1.13                        |                              |  |
| 435.0                      | 6.20                   | 43.00              | 434.3                      | 16.5              | 8.4               | 17.9                         | 2.46                         | 2.42                        |                              |  |
| 496.0                      | 7.20                   | 40.20              | 494.9                      | 21.9              | 13.1              | 25.1                         | 1.72                         | 1.64                        |                              |  |
| 558.0                      | 8.30                   | 38.40              | 556.3                      | 28.3              | 18.4              | 33.4                         | 1.82                         | 1.77                        |                              |  |
| 620.0                      | 9.90                   | 35.90              | 617.5                      | 36.2              | 24.3              | 43.2                         | 2.66                         | 2.58                        |                              |  |
| 681.0                      | 10.50                  | 34.60              | 677.6                      | 45.0              | 30.5              | 53.9                         | 1.05                         | 0.98                        |                              |  |
| 743.0                      | 11.30                  | 35.10              | 738.5                      | 54.6              | 37.2              | 65.6                         | 1.30                         | 1.29                        |                              |  |

# Cathedral Energy Services

## Survey Report

|                  |                                    |                                     |  |
|------------------|------------------------------------|-------------------------------------|--|
| <b>Company:</b>  | Laramie Energy II, LLC.            | <b>Local Co-ordinate Reference:</b> | Well South Leverich 18-05D (was 18-05C)  |
| <b>Project:</b>  | Helmer Gulch                       | <b>TVD Reference:</b>               | SL 18-05D KBE @ 8028.0ft (Grey Wolf 706) |
| <b>Site:</b>     | NESE Sec 13-T7S-R94W               | <b>MD Reference:</b>                | SL 18-05D KBE @ 8028.0ft (Grey Wolf 706) |
| <b>Well:</b>     | South Leverich 18-05D (was 18-05C) | <b>North Reference:</b>             | True                                     |
| <b>Wellbore:</b> | Stk                                | <b>Survey Calculation Method:</b>   | Minimum Curvature                        |
| <b>Design:</b>   | Stk                                | <b>Database:</b>                    | EDM 2003.21 US Multi Users DB            |

| Survey              |                 |             |                     |            |            |                       |                       |                      |                       |
|---------------------|-----------------|-------------|---------------------|------------|------------|-----------------------|-----------------------|----------------------|-----------------------|
| Measured Depth (ft) | Inclination (°) | Azimuth (°) | Vertical Depth (ft) | +N/-S (ft) | +E/-W (ft) | Vertical Section (ft) | Dogleg Rate (°/100ft) | Build Rate (°/100ft) | Formations / Comments |
| 804.0               | 12.60           | 35.60       | 798.1               | 64.9       | 44.5       | 78.1                  | 2.14                  | 2.13                 |                       |
| 866.0               | 14.20           | 35.90       | 858.4               | 76.6       | 52.9       | 92.4                  | 2.58                  | 2.58                 |                       |
| 929.0               | 15.10           | 36.70       | 919.4               | 89.4       | 62.4       | 108.3                 | 1.46                  | 1.43                 |                       |
| 992.0               | 16.10           | 36.60       | 980.1               | 103.0      | 72.5       | 125.2                 | 1.59                  | 1.59                 |                       |
| 1,056.0             | 16.90           | 35.90       | 1,041.4             | 117.7      | 83.2       | 143.3                 | 1.29                  | 1.25                 |                       |
| 1,119.0             | 18.00           | 35.70       | 1,101.5             | 133.0      | 94.3       | 162.1                 | 1.75                  | 1.75                 |                       |
| 1,183.0             | 19.10           | 35.90       | 1,162.2             | 149.5      | 106.2      | 182.4                 | 1.72                  | 1.72                 |                       |
| 1,247.0             | 19.40           | 35.70       | 1,222.6             | 166.6      | 118.5      | 203.4                 | 0.48                  | 0.47                 |                       |
| 1,310.0             | 20.40           | 37.00       | 1,281.9             | 183.9      | 131.2      | 224.7                 | 1.74                  | 1.59                 |                       |
| 1,374.0             | 20.60           | 36.40       | 1,341.8             | 201.8      | 144.6      | 247.1                 | 0.45                  | 0.31                 |                       |
| 1,437.0             | 20.60           | 37.10       | 1,400.8             | 219.6      | 157.9      | 269.2                 | 0.39                  | 0.00                 |                       |
| 1,500.0             | 20.60           | 36.80       | 1,459.8             | 237.3      | 171.2      | 291.3                 | 0.17                  | 0.00                 |                       |
| 1,593.0             | 19.70           | 37.80       | 1,547.1             | 262.8      | 190.6      | 323.2                 | 1.04                  | -0.97                |                       |
| 1,688.0             | 20.10           | 36.20       | 1,636.4             | 288.6      | 210.1      | 355.5                 | 0.71                  | 0.42                 |                       |
| 1,783.0             | 20.40           | 35.90       | 1,725.5             | 315.2      | 229.4      | 388.2                 | 0.33                  | 0.32                 |                       |
| 1,878.0             | 20.90           | 35.90       | 1,814.4             | 342.4      | 249.1      | 421.6                 | 0.53                  | 0.53                 |                       |
| 1,973.0             | 21.30           | 34.60       | 1,903.1             | 370.3      | 268.8      | 455.6                 | 0.65                  | 0.42                 |                       |
| 2,068.0             | 21.40           | 36.20       | 1,991.5             | 398.5      | 288.8      | 490.0                 | 0.62                  | 0.11                 |                       |
| 2,164.0             | 21.40           | 37.30       | 2,080.9             | 426.5      | 309.8      | 524.9                 | 0.42                  | 0.00                 |                       |
| 2,259.0             | 21.70           | 37.40       | 2,169.3             | 454.3      | 331.0      | 559.7                 | 0.32                  | 0.32                 |                       |
| 2,354.0             | 21.90           | 37.60       | 2,257.5             | 482.3      | 352.4      | 594.9                 | 0.22                  | 0.21                 |                       |
| 2,450.0             | 21.70           | 38.60       | 2,346.6             | 510.3      | 374.4      | 630.5                 | 0.44                  | -0.21                |                       |
| 2,545.0             | 22.10           | 37.40       | 2,434.8             | 538.2      | 396.2      | 665.9                 | 0.63                  | 0.42                 |                       |
| 2,640.0             | 20.70           | 35.90       | 2,523.2             | 566.0      | 416.9      | 700.4                 | 1.58                  | -1.47                |                       |
| 2,736.0             | 21.30           | 35.80       | 2,612.8             | 593.9      | 437.1      | 734.6                 | 0.63                  | 0.62                 |                       |
| 2,831.0             | 21.70           | 36.40       | 2,701.2             | 622.1      | 457.6      | 769.3                 | 0.48                  | 0.42                 |                       |
| 2,926.0             | 21.20           | 35.20       | 2,789.6             | 650.2      | 477.9      | 803.9                 | 0.70                  | -0.53                |                       |
| 3,021.0             | 21.90           | 36.00       | 2,878.0             | 678.6      | 498.3      | 838.6                 | 0.80                  | 0.74                 |                       |
| 3,117.0             | 22.00           | 35.50       | 2,967.0             | 707.7      | 519.2      | 874.3                 | 0.22                  | 0.10                 |                       |
| 3,212.0             | 21.70           | 35.70       | 3,055.2             | 736.5      | 539.8      | 909.5                 | 0.33                  | -0.32                |                       |
| 3,307.0             | 21.70           | 34.70       | 3,143.5             | 765.2      | 560.0      | 944.4                 | 0.39                  | 0.00                 |                       |
| 3,403.0             | 21.00           | 35.50       | 3,232.9             | 793.8      | 580.1      | 979.2                 | 0.79                  | -0.73                |                       |
| 3,498.0             | 21.50           | 35.20       | 3,321.4             | 821.9      | 600.1      | 1,013.4               | 0.54                  | 0.53                 |                       |
| 3,593.0             | 22.00           | 35.10       | 3,409.7             | 850.6      | 620.3      | 1,048.4               | 0.53                  | 0.53                 |                       |
| 3,689.0             | 21.70           | 36.10       | 3,498.8             | 879.7      | 641.1      | 1,084.0               | 0.50                  | -0.31                |                       |
| 3,784.0             | 21.80           | 35.90       | 3,587.0             | 908.2      | 661.8      | 1,119.0               | 0.13                  | 0.11                 |                       |
| 3,879.0             | 21.10           | 36.20       | 3,675.4             | 936.3      | 682.3      | 1,153.6               | 0.75                  | -0.74                |                       |
| 3,974.0             | 21.60           | 36.50       | 3,763.9             | 964.1      | 702.8      | 1,188.1               | 0.54                  | 0.53                 |                       |
| 4,070.0             | 22.20           | 38.30       | 3,853.0             | 992.6      | 724.5      | 1,223.8               | 0.94                  | 0.63                 |                       |
| 4,163.0             | 22.90           | 37.20       | 3,938.9             | 1,020.8    | 746.3      | 1,259.4               | 0.88                  | 0.75                 |                       |
| 4,259.0             | 22.00           | 36.30       | 4,027.6             | 1,050.1    | 768.3      | 1,295.9               | 1.00                  | -0.94                |                       |
| 4,309.0             | 20.40           | 39.30       | 4,074.2             | 1,064.4    | 779.3      | 1,313.9               | 3.87                  | -3.20                |                       |
| 4,372.0             | 18.40           | 44.20       | 4,133.6             | 1,080.0    | 793.2      | 1,334.9               | 4.09                  | -3.17                |                       |
| 4,435.0             | 19.60           | 43.60       | 4,193.2             | 1,094.8    | 807.4      | 1,355.3               | 1.93                  | 1.90                 |                       |
| 4,530.0             | 20.60           | 43.40       | 4,282.4             | 1,118.5    | 829.9      | 1,388.0               | 1.06                  | 1.05                 |                       |
| 4,625.0             | 20.10           | 43.30       | 4,371.5             | 1,142.5    | 852.6      | 1,421.0               | 0.53                  | -0.53                |                       |
| 4,721.0             | 20.60           | 43.10       | 4,461.5             | 1,166.9    | 875.4      | 1,454.3               | 0.53                  | 0.52                 |                       |
| 4,816.0             | 21.30           | 43.50       | 4,550.2             | 1,191.6    | 898.7      | 1,488.3               | 0.75                  | 0.74                 |                       |
| 4,912.0             | 21.30           | 43.70       | 4,639.7             | 1,216.8    | 922.8      | 1,523.1               | 0.08                  | 0.00                 |                       |
| 5,007.0             | 21.00           | 44.20       | 4,728.3             | 1,241.5    | 946.6      | 1,557.4               | 0.37                  | -0.32                |                       |
| 5,103.0             | 20.90           | 44.80       | 4,817.9             | 1,266.0    | 970.6      | 1,591.7               | 0.25                  | -0.10                |                       |
| 5,198.0             | 20.60           | 44.80       | 4,906.7             | 1,289.9    | 994.4      | 1,625.2               | 0.32                  | -0.32                |                       |
| 5,294.0             | 20.40           | 45.90       | 4,996.7             | 1,313.5    | 1,018.3    | 1,658.8               | 0.45                  | -0.21                |                       |

# Cathedral Energy Services

## Survey Report

|                  |                                    |                                     |  |
|------------------|------------------------------------|-------------------------------------|--|
| <b>Company:</b>  | Laramie Energy II, LLC.            | <b>Local Co-ordinate Reference:</b> | Well South Leverich 18-05D (was 18-05C)  |
| <b>Project:</b>  | Helmer Gulch                       | <b>TVD Reference:</b>               | SL 18-05D KBE @ 8028.0ft (Grey Wolf 706) |
| <b>Site:</b>     | NESE Sec 13-T7S-R94W               | <b>MD Reference:</b>                | SL 18-05D KBE @ 8028.0ft (Grey Wolf 706) |
| <b>Well:</b>     | South Leverich 18-05D (was 18-05C) | <b>North Reference:</b>             | True                                     |
| <b>Wellbore:</b> | Stk                                | <b>Survey Calculation Method:</b>   | Minimum Curvature                        |
| <b>Design:</b>   | Stk                                | <b>Database:</b>                    | EDM 2003.21 US Multi Users DB            |

| Survey              |                 |             |                     |            |            |                       |                       |                      |                       |
|---------------------|-----------------|-------------|---------------------|------------|------------|-----------------------|-----------------------|----------------------|-----------------------|
| Measured Depth (ft) | Inclination (°) | Azimuth (°) | Vertical Depth (ft) | +N/-S (ft) | +E/-W (ft) | Vertical Section (ft) | Dogleg Rate (°/100ft) | Build Rate (°/100ft) | Formations / Comments |
| 5,389.0             | 20.50           | 44.20       | 5,085.7             | 1,337.0    | 1,041.8    | 1,691.9               | 0.63                  | 0.11                 |                       |
| 5,484.0             | 21.10           | 44.70       | 5,174.5             | 1,361.0    | 1,065.4    | 1,725.6               | 0.66                  | 0.63                 |                       |
| 5,580.0             | 21.20           | 44.60       | 5,264.0             | 1,385.7    | 1,089.7    | 1,760.2               | 0.11                  | 0.10                 |                       |
| 5,675.0             | 21.60           | 44.80       | 5,352.5             | 1,410.3    | 1,114.1    | 1,794.8               | 0.43                  | 0.42                 |                       |
| 5,771.0             | 20.10           | 44.40       | 5,442.2             | 1,434.6    | 1,138.1    | 1,828.9               | 1.57                  | -1.56                |                       |
| 5,866.0             | 20.10           | 45.30       | 5,531.4             | 1,457.8    | 1,161.1    | 1,861.5               | 0.33                  | 0.00                 |                       |
| 5,962.0             | 20.30           | 45.50       | 5,621.5             | 1,481.1    | 1,184.7    | 1,894.5               | 0.22                  | 0.21                 |                       |
| 6,057.0             | 20.40           | 46.00       | 5,710.6             | 1,504.1    | 1,208.4    | 1,927.5               | 0.21                  | 0.11                 |                       |
| 6,153.0             | 20.80           | 46.80       | 5,800.4             | 1,527.4    | 1,232.9    | 1,961.1               | 0.51                  | 0.42                 |                       |
| 6,248.0             | 21.10           | 51.10       | 5,889.1             | 1,549.7    | 1,258.5    | 1,994.8               | 1.65                  | 0.32                 |                       |
| 6,344.0             | 20.70           | 54.90       | 5,978.8             | 1,570.3    | 1,285.8    | 2,028.3               | 1.47                  | -0.42                |                       |
| 6,439.0             | 20.00           | 59.10       | 6,067.9             | 1,588.3    | 1,313.5    | 2,060.1               | 1.70                  | -0.74                |                       |
| 6,534.0             | 18.70           | 59.20       | 6,157.5             | 1,604.4    | 1,340.5    | 2,090.1               | 1.37                  | -1.37                |                       |
| 6,630.0             | 17.40           | 59.20       | 6,248.8             | 1,619.7    | 1,366.0    | 2,118.4               | 1.35                  | -1.35                |                       |
| 6,725.0             | 15.40           | 58.10       | 6,340.0             | 1,633.6    | 1,389.0    | 2,144.0               | 2.13                  | -2.10                |                       |
| 6,821.0             | 14.50           | 56.90       | 6,432.7             | 1,646.9    | 1,409.8    | 2,167.7               | 0.99                  | -0.94                |                       |
| 6,916.0             | 13.90           | 58.40       | 6,524.8             | 1,659.4    | 1,429.5    | 2,190.1               | 0.74                  | -0.63                |                       |
| 7,012.0             | 11.30           | 54.10       | 6,618.5             | 1,670.9    | 1,447.0    | 2,210.3               | 2.88                  | -2.71                |                       |
| 7,107.0             | 8.90            | 49.70       | 6,712.0             | 1,681.2    | 1,460.1    | 2,226.7               | 2.65                  | -2.53                |                       |
| 7,201.0             | 7.00            | 49.00       | 6,805.1             | 1,689.6    | 1,470.0    | 2,239.5               | 2.02                  | -2.02                |                       |
| 7,296.0             | 5.60            | 54.70       | 6,899.5             | 1,696.1    | 1,478.1    | 2,249.8               | 1.61                  | -1.47                |                       |
| 7,391.0             | 3.40            | 42.30       | 6,994.2             | 1,700.9    | 1,483.8    | 2,257.1               | 2.52                  | -2.32                |                       |
| 7,487.0             | 2.20            | 47.80       | 7,090.1             | 1,704.2    | 1,487.1    | 2,261.8               | 1.28                  | -1.25                |                       |
| 7,582.0             | 1.90            | 41.70       | 7,185.1             | 1,706.6    | 1,489.5    | 2,265.2               | 0.39                  | -0.32                |                       |
| 7,676.0             | 1.80            | 35.70       | 7,279.0             | 1,709.0    | 1,491.4    | 2,268.2               | 0.23                  | -0.11                |                       |
| 7,772.0             | 1.80            | 47.60       | 7,375.0             | 1,711.2    | 1,493.4    | 2,271.2               | 0.39                  | 0.00                 |                       |
| 7,867.0             | 1.60            | 51.20       | 7,469.9             | 1,713.0    | 1,495.5    | 2,274.0               | 0.24                  | -0.21                |                       |
| 7,962.0             | 1.40            | 50.20       | 7,564.9             | 1,714.6    | 1,497.5    | 2,276.4               | 0.21                  | -0.21                |                       |
| 8,058.0             | 0.80            | 36.00       | 7,660.9             | 1,715.9    | 1,498.7    | 2,278.3               | 0.68                  | -0.62                |                       |
| 8,153.0             | 0.70            | 40.40       | 7,755.9             | 1,716.9    | 1,499.5    | 2,279.5               | 0.12                  | -0.11                |                       |
| 8,248.0             | 0.90            | 36.50       | 7,850.8             | 1,717.9    | 1,500.3    | 2,280.8               | 0.22                  | 0.21                 |                       |
| 8,343.0             | 0.70            | 42.40       | 7,945.8             | 1,719.0    | 1,501.2    | 2,282.2               | 0.23                  | -0.21                |                       |
| 8,437.0             | 1.10            | 57.40       | 8,039.8             | 1,719.9    | 1,502.3    | 2,283.6               | 0.49                  | 0.43                 |                       |
| 8,532.0             | 1.00            | 36.80       | 8,134.8             | 1,721.0    | 1,503.6    | 2,285.3               | 0.41                  | -0.11                |                       |
| 8,627.0             | 1.20            | 53.80       | 8,229.8             | 1,722.3    | 1,504.9    | 2,287.1               | 0.40                  | 0.21                 |                       |
| 8,722.0             | 1.00            | 32.10       | 8,324.8             | 1,723.6    | 1,506.1    | 2,288.9               | 0.48                  | -0.21                |                       |
| 8,818.0             | 1.50            | 46.80       | 8,420.8             | 1,725.1    | 1,507.5    | 2,291.0               | 0.61                  | 0.52                 |                       |
| 8,913.0             | 0.70            | 23.50       | 8,515.7             | 1,726.5    | 1,508.6    | 2,292.8               | 0.95                  | -0.84                |                       |
| 9,009.0             | 0.10            | 15.90       | 8,611.7             | 1,727.1    | 1,508.9    | 2,293.4               | 0.63                  | -0.62                |                       |
| 9,104.0             | 0.50            | 269.10      | 8,706.7             | 1,727.2    | 1,508.5    | 2,293.2               | 0.57                  | 0.42                 |                       |
| 9,200.0             | 0.30            | 11.20       | 8,802.7             | 1,727.4    | 1,508.1    | 2,293.1               | 0.66                  | -0.21                |                       |
| 9,295.0             | 0.70            | 250.50      | 8,897.7             | 1,727.5    | 1,507.6    | 2,292.8               | 0.94                  | 0.42                 |                       |
| 9,390.0             | 0.50            | 4.20        | 8,992.7             | 1,727.7    | 1,507.1    | 2,292.7               | 1.06                  | -0.21                |                       |
| 9,485.0             | 0.90            | 197.70      | 9,087.7             | 1,727.4    | 1,506.9    | 2,292.3               | 1.46                  | 0.42                 |                       |
| 9,581.0             | 0.70            | 179.40      | 9,183.7             | 1,726.1    | 1,506.7    | 2,291.2               | 0.34                  | -0.21                |                       |
| 9,676.0             | 0.70            | 115.60      | 9,278.7             | 1,725.3    | 1,507.2    | 2,290.9               | 0.78                  | 0.00                 |                       |
| 9,771.0             | 1.30            | 98.00       | 9,373.7             | 1,724.9    | 1,508.8    | 2,291.7               | 0.70                  | 0.63                 |                       |
| 9,867.0             | 1.90            | 76.90       | 9,469.7             | 1,725.1    | 1,511.4    | 2,293.5               | 0.87                  | 0.62                 |                       |
| 9,962.0             | 1.30            | 69.30       | 9,564.6             | 1,725.8    | 1,514.0    | 2,295.8               | 0.67                  | -0.63                |                       |
| 10,058.0            | 1.20            | 60.60       | 9,660.6             | 1,726.7    | 1,515.9    | 2,297.7               | 0.22                  | -0.10                |                       |
| 10,152.0            | 1.30            | 60.00       | 9,754.6             | 1,727.7    | 1,517.6    | 2,299.6               | 0.11                  | 0.11                 |                       |
| 10,248.0            | 2.10            | 46.00       | 9,850.5             | 1,729.5    | 1,519.9    | 2,302.4               | 0.93                  | 0.83                 |                       |
| 10,343.0            | 2.40            | 7.50        | 9,945.5             | 1,732.7    | 1,521.4    | 2,305.8               | 1.59                  | 0.32                 |                       |

# Cathedral Energy Services

## Survey Report

|                  |                                    |                                     |  |
|------------------|------------------------------------|-------------------------------------|--|
| <b>Company:</b>  | Laramie Energy II, LLC.            | <b>Local Co-ordinate Reference:</b> | Well South Leverich 18-05D (was 18-05C)  |
| <b>Project:</b>  | Helmer Gulch                       | <b>TVD Reference:</b>               | SL 18-05D KBE @ 8028.0ft (Grey Wolf 706) |
| <b>Site:</b>     | NESE Sec 13-T7S-R94W               | <b>MD Reference:</b>                | SL 18-05D KBE @ 8028.0ft (Grey Wolf 706) |
| <b>Well:</b>     | South Leverich 18-05D (was 18-05C) | <b>North Reference:</b>             | True                                     |
| <b>Wellbore:</b> | Stk                                | <b>Survey Calculation Method:</b>   | Minimum Curvature                        |
| <b>Design:</b>   | Stk                                | <b>Database:</b>                    | EDM 2003.21 US Multi Users DB            |

| Survey              |                 |             |                     |            |            |                       |                       |                      |  |
|---------------------|-----------------|-------------|---------------------|------------|------------|-----------------------|-----------------------|----------------------|--|
| Measured Depth (ft) | Inclination (°) | Azimuth (°) | Vertical Depth (ft) | +N/-S (ft) | +E/-W (ft) | Vertical Section (ft) | Dogleg Rate (°/100ft) | Build Rate (°/100ft) | Formations / Comments                  |
| 10,406.0            | 2.40            | 5.80        | 10,008.4            | 1,735.3    | 1,521.7    | 2,308.0               | 0.11                  | 0.00                 | Last DP Survey @ 10406' MD             |
| 10,461.0            | 2.40            | 5.80        | 10,063.4            | 1,737.6    | 1,521.9    | 2,309.8               | 0.00                  | 0.00                 | Straightline Projection to TD @ 10461' |

| Targets  |               |              |          |            |            |               |              |           |             |
|--|---------------|--------------|----------|------------|------------|---------------|--------------|-----------|-------------|
| Target Name<br>- hit/miss target<br>- Shape  | Dip Angle (°) | Dip Dir. (°) | TVD (ft) | +N/-S (ft) | +E/-W (ft) | Northing (ft) | Easting (ft) | Latitude  | Longitude   |
| S Leverich 18-05D Tgt<br>- actual wellpath misses target center by 9.4ft at 7429.1ft MD (7032.2 TVD, 1702.4 N, 1485.3 E)<br>- Point                    | 0.00          | 0.00         | 7,032.3  | 1,694.8    | 1,490.9    | 1,593,639.80  | 2,343,806.20 | 39.440268 | -107.823689 |
| S Leverich 18-05C Stk T<br>- actual wellpath misses target center by 26.5ft at 8366.8ft MD (7969.6 TVD, 1719.2 N, 1501.4 E)<br>- Point                 | 0.00          | 0.00         | 7,970.0  | 1,694.8    | 1,490.9    | 1,593,639.80  | 2,343,806.20 | 39.440268 | -107.823689 |
| S Leverich 18-05D BHL<br>- actual wellpath misses target center by 126.2ft at 10461.0ft MD (10063.4 TVD, 1737.6 N, 1521.9 E)<br>- Circle (radius 50.0) | 0.00          | 0.00         | 10,178.0 | 1,694.8    | 1,490.9    | 1,593,639.80  | 2,343,806.20 | 39.440268 | -107.823689 |

| Design Annotations  |                     |                   |            |  |  |
|---------------------|---------------------|-------------------|------------|--|--|
| Measured Depth (ft) | Vertical Depth (ft) | Local Coordinates |            |  |  |
|                     |                     | +N/-S (ft)        | +E/-W (ft) | Comment                                |  |
| 10,406.0            | 10,008.4            | 1,735.3           | 1,521.7    | Last DP Survey @ 10406' MD             |  |
| 10,461.0            | 10,063.4            | 1,737.6           | 1,521.9    | Straightline Projection to TD @ 10461' |  |

Checked By: \_\_\_\_\_ Approved By: \_\_\_\_\_ Date: \_\_\_\_\_