

HALLIBURTON

SUNDANCE ENERGY INC

**MLD 13-22
Wattenberg
Weld County , Colorado**

Cement Production Casing
22-Jun-2012

Job Site Documents

Field Ticket

| | | | |
|---|--|--|--|
| Field Ticket Number: 9613418 | | Field Ticket Date: Friday, June 22, 2012 | |
| Bill To: | | Job Name: MLD Order Type: Streamline Order (ZOH) Well Name: MLD 13-22 Company Code: 1100 Customer PO No.: NA Shipping Point: Brighton, CO, USA Sales Office: Rocky Mountains BD Well Type: Gas Well Category: Development | |
| Ship To: SUNDANCE ENERGY INC MLD, 13-22 2934921 S22 T4N R68W BERTHOUD, CO 80513 | | | |

| Material | Description | QTY | UOM | Base Amt | Unit Amt | Gross Amount | Discount | Net Amount |
|-----------|--|------|-----|----------|----------|--------------|----------|------------|
| 7523 | CMT PRODUCTION CASING BOM | 1 | JOB | 0.00 | 0.00 | 0.00 | | 0.00 |
| 16091 | ZI - PUMPING CHARGE | 1 | EA | 0.00 | 9,081.00 | 9,081.00 | 65% | 3,178.35 |
| | DEPTH | 7273 | | | | | | |
| | FEET/METERS (FT/M) | | FT | | | | | |
| 432904 | CMT, ROCKIES SG SETUP | 1 | EA | | | 8,771.00 | 58.71% | 3,621.70 |
| | NUMBER OF UNITS | 1 | | | | | | |
| 432905 | CMT, ROCKIES SG MILEAGE | 60 | MI | | | 1,347.00 | 61.7% | 515.91 |
| | Number of Units | 1 | | | | | | |
| 432906 | CMT, ROCKIES SG DELIVERY | 1 | TNM | | | 2,071.90 | 63.21% | 762.17 |
| | NUMBER OF TONS | 8.25 | | | | | | |
| 528788 | MUD FLUSH III | 24 | BBL | 0.00 | 94.45 | 2,266.80 | 65% | 793.38 |
| 452963 | FRACCEM (TM) SYSTEM | 160 | SK | | | 10,129.73 | 65% | 3,545.40 |
| 101985045 | CHEM, CLA-WEB - TOTE | 6 | GAL | 0.00 | 474.30 | 2,845.80 | 65% | 996.03 |
| 100007955 | SHOE-FLT- 4 1/2 8RD - HI-PORT | 1 | EA | 0.00 | 918.00 | 918.00 | 65% | 321.30 |
| 100004752 | CLR,FLT,4-1/2 8RD,9.5-13.5PPF,2-3/4 | 1 | EA | 0.00 | 700.00 | 700.00 | 65% | 245.00 |
| 100004491 | CTRZR ASSY,TURBO,API,4 1/2 CSG X 7 7/8 | 15 | EA | 0.00 | 166.00 | 2,490.00 | 65% | 871.50 |
| 100004622 | CLAMP - LIMIT - 4-1/2 - HINGED - | 1 | EA | 0.00 | 44.20 | 44.20 | 65% | 15.47 |
| 101241019 | PLUG,CMTG,TOP,4 1/2,HWE,3.65 MIN/4.14 MA | 1 | EA | 0.00 | 186.00 | 186.00 | 65% | 65.10 |
| 100005045 | KIT,HALL WELD-A | 1 | EA | 0.00 | 74.30 | 74.30 | 65% | 26.00 |

Field Ticket

| | | | |
|---|--|--|--|
| Field Ticket Number: 9613418 | | Field Ticket Date: Friday, June 22, 2012 | |
| Bill To: <div style="border: 1px solid black; height: 80px; width: 100%;"></div> | | Job Name: MLD Order Type: Streamline Order (ZOH) Well Name: MLD 13-22 Company Code: 1100 Customer PO No.: NA Shipping Point: Brighton, CO, USA Sales Office: Rocky Mountains BD Well Type: Gas Well Category: Development | |
| Ship To: SUNDANCE ENERGY INC MLD, 13-22 2934921 S22 T4N R68W BERTHOUD, CO 80513 | | | |

| Material | Description | QTY | UOM | Base Amt | Unit Amt | Gross Amount | Discount | Net Amount |
|---|------------------------------------|-----|-----|----------|----------|---------------|------------|------------------|
| 100004595 | BSKT,CEM,4 1/2 CSG X 6 1/4,8 3/4 H | 2 | EA | 0.00 | 390.00 | 780.00 | 65% | 273.00 |
| 100008028 | SUGAR, GRANULATED, IMPERIAL | 50 | LB | 0.00 | 6.44 | 322.00 | 65% | 112.70 |
| Halliburton Rep: BRANDON NIELSON | | | | | | Totals | USD | 42,027.73 |
| Customer Agent: Gene Hudson | | | | | | | | 26,684.72 |
| Halliburton Approval | | | | | | | | 15,343.01 |

THIS OUTPUT DOES NOT INCLUDE TAXES. APPLICABLE SALES TAX WILL BE BILLED ON THE FINAL INVOICE.
 CUSTOMER HEREBY ACKNOWLEDGES RECEIPT OF THE MATERIALS AND SERVICES DESCRIBED ABOVE AND ON THE ATTACHED DOCUMENTS.

X

Customer Signature _____

FIELD TICKET TOTAL: USD 15,343.01

Was our HSE performance satisfactory? Y or N Were you satisfied with our Equipment? Y or N Were you satisfied with our people? Y or N
 (Health, Safety, Environment)

Comments

The Road to Excellence Starts with Safety

| | | | |
|---------------------------------------|------------------------------------|----------------------------|------------------------|
| Sold To #: 344834 | Ship To #: 2934921 | Quote #: | Sales Order #: 9613418 |
| Customer: SUNDANCE ENERGY INC | | Customer Rep: Hudson, Gene | |
| Well Name: MLD | Well #: 13-22 | API/UWI #: 05-123-35709-00 | |
| Field: Wattenberg | City (SAP): BERTHOUD | County/Parish: Weld | State: Colorado |
| Contractor: Ensign | Rig/Platform Name/Num: 55 | | |
| Job Purpose: Cement Production Casing | | | |
| Well Type: Development Well | Job Type: Cement Production Casing | | |
| Sales Person: AARON, WESLEY | Srv Supervisor: NIELSON, BRANDON | MBU ID Emp #: 479703 | |

Job Personnel

| HES Emp Name | Exp Hrs | Emp # | HES Emp Name | Exp Hrs | Emp # | HES Emp Name | Exp Hrs | Emp # |
|------------------|---------|--------|---------------------------|---------|--------|--------------------|---------|--------|
| DIRKS, RICHARD E | 4.8 | 485940 | MARKOVICH, STEVEN Michael | 4.8 | 502964 | NIELSON, BRANDON K | 4.8 | 479703 |

Equipment

| HES Unit # | Distance-1 way | HES Unit # | Distance-1 way | HES Unit # | Distance-1 way | HES Unit # | Distance-1 way |
|------------|----------------|------------|----------------|------------|----------------|------------|----------------|
| 10248053C | 30 mile | 10951212 | 30 mile | 11488570C | 30 mile | | |

Job Hours

| Date | On Location Hours | Operating Hours | Date | On Location Hours | Operating Hours | Date | On Location Hours | Operating Hours |
|---------|-------------------|-----------------|------|-------------------|-----------------|------|-------------------|-----------------|
| 6-22-12 | 4.8 | 2 | | | | | | |

TOTAL Total is the sum of each column separately

| Job | | | | Job Times | | | |
|------------------------|----------------------|-------------------|----------|------------------|-----------------|-------|-----------|
| Formation Name | Formation Depth (MD) | Top | Bottom | Called Out | Date | Time | Time Zone |
| Form Type | 7237. ft | BHST | 7237. ft | On Location | 22 - Jun - 2012 | 15:30 | MST |
| Job depth MD | 7237. ft | Job Depth TVD | 7237. ft | Job Started | 22 - Jun - 2012 | 18:15 | MST |
| Water Depth | | Wk Ht Above Floor | 4. ft | Job Completed | 22 - Jun - 2012 | 20:20 | MST |
| Perforation Depth (MD) | From | To | | Job Departed Loc | 22 - Jun - 2012 | 21:51 | MST |

Well Data

| Description | New / Used | Max pressure psig | Size in | ID in | Weight lbm/ft | Thread | Grade | Top MD ft | Bottom MD ft | Top TVD ft | Bottom TVD ft |
|-------------------|------------|-------------------|---------|-------|---------------|--------|-------|-----------|--------------|------------|---------------|
| Open Hole | | | | 7.875 | | | | 595. | 7824. | . | . |
| Production Casing | New | | 4.5 | 4. | 11.6 | | | . | 7273. | . | . |
| Surface Casing | Used | | 8.625 | 8.097 | 24. | | J-55 | . | 595. | . | . |

Sales/Rental/3rd Party (HES)

| Description | Qty | Qty uom | Depth | Supplier |
|--|-----|---------|-------|----------|
| SHOE-FLT- 4 1/2 8RD - HI-PORT | 1 | EA | | |
| CLR,FLT,4-1/2 8RD,9.5-13.5PPF,2-3/4 | 1 | EA | | |
| CTRZR ASSY,TURBO,API,4 1/2 CSG X 7 7/8 | 15 | EA | | |
| CLAMP - LIMIT - 4-1/2 - HINGED - | 1 | EA | | |
| PLUG,CMTG,TOP,4 1/2,HWE,3.65 MIN/4.14 MA | 1 | EA | | |
| KIT,HALL WELD-A | 1 | EA | | |
| BSKT,CEM,4 1/2 CSG X 6 1/4,8 3/4 H | 2 | EA | | |

Tools and Accessories

| Type | Size | Qty | Make | Depth | Type | Size | Qty | Make | Depth | Type | Size | Qty | Make |
|--------------|------|-----|------|-------|-------------|------|-----|------|-------|----------------|------|-----|---------|
| Guide Shoe | | | | | Packer | | | | | Top Plug | 4.5 | 1 | hwe |
| Float Shoe | | | | | Bridge Plug | | | | | Bottom Plug | | | |
| Float Collar | | | | | Retainer | | | | | SSR plug set | | | |
| Insert Float | | | | | | | | | | Plug Container | 4.5 | 1 | Screwin |
| Stage Tool | | | | | | | | | | Centralizers | | | |

Miscellaneous Materials

| Gelling Agt | Conc | Surfactant | Conc | Acid Type | Qty | Conc | % |
|---------------|------|------------|------|-----------|------|------|---|
| Treatment Fld | Conc | Inhibitor | Conc | Sand Type | Size | Qty | |

| Fluid Data | | | | | | | | | |
|--|----------------------------|------------------------------|-----------------|-----------------------------------|------------------------|---------------------------|------------------|-----------------|------------------------|
| Stage/Plug #: 1 | | | | | | | | | |
| Fluid # | Stage Type | Fluid Name | Qty | Qty uom | Mixing Density lbm/gal | Yield ft ³ /sk | Mix Fluid Gal/sk | Rate bbl/min | Total Mix Fluid Gal/sk |
| 1 | Clay Web Water Spacer | | 20.00 | bbl | 8.4 | .0 | .0 | .0 | |
| 2 | MUD FLUSH III | MUD FLUSH III - SBM (528788) | 24.00 | bbl | 8.4 | .0 | 1000.0 | 5.0 | |
| 3 | CalyWeb Water Spacer | | 10.00 | bbl | 8.4 | .0 | .0 | .0 | |
| 4 | Fraccem 13.5# | FRACCEM (TM) SYSTEM (452963) | 160.0 | sacks | 13.5 | 1.69 | 8.04 | 5.0 | 8.04 |
| | 8.04 Gal | FRESH WATER | | | | | | | |
| 5 | ClayWeb Water Displacement | | 112.7 | bbl | 8.34 | .0 | .0 | 7.0 | |
| | 2.5 gal/Mgal | CLA-WEB - TOTE (101985045) | | | | | | | |
| Calculated Values | | Pressures | | Volumes | | | | | |
| Displacement | | Shut In: Instant | | Lost Returns | | Cement Slurry | | Pad | |
| Top Of Cement | | 5 Min | | Cement Returns | | Actual Displacement | 113.1 | Treatment | |
| Frac Gradient | | 15 Min | | Spacers | | Load and Breakdown | | Total Job | |
| Rates | | | | | | | | | |
| Circulating | | Mixing | | Displacement | | Avg. Job | | | |
| Cement Left In Pipe | Amount | 0 ft | Reason | Shoe Joint | | | | | |
| Frac Ring # 1 @ | ID | | Frac ring # 2 @ | ID | | Frac Ring # 3 @ | ID | Frac Ring # 4 @ | ID |
| The Information Stated Herein Is Correct | | | | Customer Representative Signature | | | | | |

The Road to Excellence Starts with Safety

| | | | | | | | |
|--|--|----------------------|------------------------------------|---|----------------------------|------------------------|--|
| Sold To #: 344834 | | Ship To #: 2934921 | | Quote #: | | Sales Order #: 9613418 | |
| Customer: SUNDANCE ENERGY INC | | | | Customer Rep: Hudson, Gene | | | |
| Well Name: MLD | | | Well #: 13-22 | | API/UWI #: 05-123-35709-00 | | |
| Field: Wattenberg | | City (SAP): BERTHOUD | | County/Parish: Weld | | State: Colorado | |
| Legal Description: | | | | | | | |
| Lat: N 0 deg. OR N 0 deg. 0 min. 0 secs. | | | | Long: E 0 deg. OR E 0 deg. 0 min. 0 secs. | | | |
| Contractor: Ensign | | | Rig/Platform Name/Num: 55 | | | | |
| Job Purpose: Cement Production Casing | | | | | | Ticket Amount: | |
| Well Type: Development Well | | | Job Type: Cement Production Casing | | | | |
| Sales Person: AARON, WESLEY | | | Srv Supervisor: NIELSON, BRANDON | | MBU ID Emp #: 479703 | | |

| Activity Description | Date/Time | Cht # | Rate bbl/min | Volume bbl | | Pressure psig | | Comments |
|----------------------|------------------|-------|--------------|------------|-------|---------------|--------|--|
| | | | | Stage | Total | Tubing | Casing | |
| Test Lines | 06/22/2012 20:22 | | | | | | | TESTED LINES TO 3000 PSI NO VISIBLE LEAKS. WATER TEST WAS TEMP 86.5, PH 7, IRON 0, SU;FATE<200, CHLORIDE 0 |
| Pump Spacer 1 | 06/22/2012 20:29 | | 5 | 20 | | | 313.0 | RIG WATERMIXED WITH CLAWEB |
| Pump Spacer 2 | 06/22/2012 20:35 | | 5 | 24 | | | 194.0 | RIG WATER MIXED WITH MUDFLUSH |
| Pump Spacer 1 | 06/22/2012 20:45 | | 5 | 10 | | | 432.0 | RIG WATER MIXED WITH CLAWEB |
| Pump Cement | 06/22/2012 20:47 | | 8 | 48 | | | 560.0 | 160 SKS FACCEM MIXED @ 13.5 PPG WITH RIG WATER |
| Shutdown | 06/22/2012 20:57 | | | | | | | |
| Clean Lines | 06/22/2012 20:57 | | | | | | | |
| Drop Top Plug | 06/22/2012 21:05 | | | | | | | PLUG PRE LOADED WITNESSED BY COMPANY REP |
| Pump Displacement | 06/22/2012 21:05 | | 8 | 112.7 | | | 320.0 | RIG WATER MIXED WITH CLAWEB |
| Bump Plug | 06/22/2012 21:22 | | 3 | | | | 830.0 | CALCULATED PRESSURE TO LAND WAS 581 PSI |
| Activity Description | Date/Time | Cht # | Rate bbl/min | Volume bbl | | Pressure psig | | Comments |
| | | | | Stage | Total | Tubing | Casing | |

| | | | | | | | | |
|--------------|---------------------|--|--|--|--|--|--|--|
| Check Floats | 06/22/2012 21:22 | | | | | | | pressured up to 1730 psi held for about 1 minute, all pressure released with system loop closed. open release line and got about 1.5 bbl back to truck, closed valve and put 3 bbl back into the the casing and got 0 pressure increase. shut in well with 150 |
| Shutdown | 06/22/2012 21:23 | | | | | | | psi on it agreed upon with myself and company rep. Advised rep to leave shut in for minimum 4 hours without releasing any pressure in that time. |
| Test Lines | 06/22/2012 21:46 | | | | | | | Pressure tested truck to 2500 psi on location for 5 minutes to eliminate possible truck leak. |
| End Job | 06/22/2012 21:51 | | | | | | | |

Water Analysis For Cement Mixing Water

| | | | | | |
|---------------|------------------------|--------------|-----------------|-----------------|--------------------------|
| Company: | SUNDANCE ENERGY INC | Lease: | MLD | Well Name, Nbr: | MLD, 13-22 |
| Rig Name/Nbr: | 55 | API No. /UWI | 05-123-35709-00 | | |
| County: | Weld | State: | Colorado | Country: | United States of America |

FIELD TEST KIT**NOTE:** These tests are an indication of POTENTIAL contamination and are not conclusive.

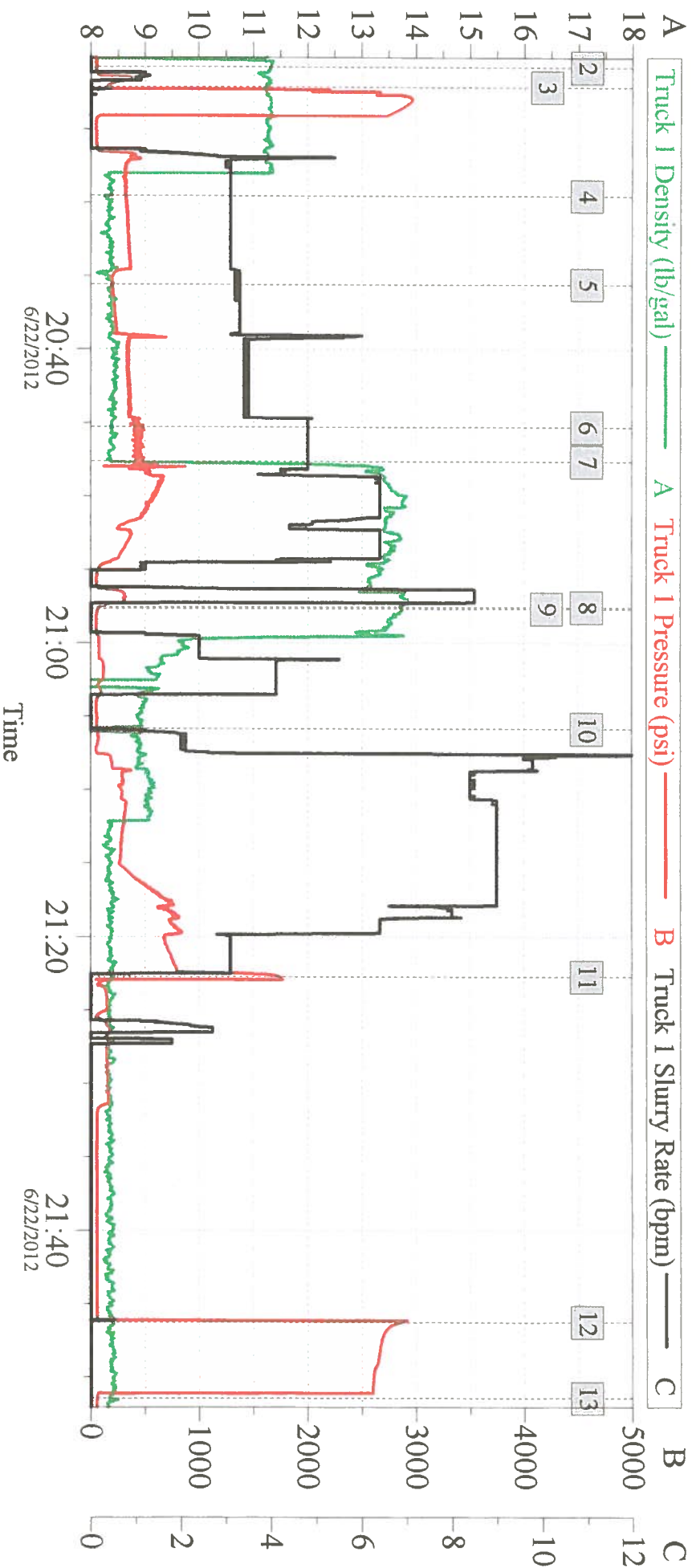
For more comprehensive results, a sample should be submitted to the Local Area Lab

| | | | |
|--------------------|------------------|---------------|-----------|
| Date | 22-Jun-2012 | Ticket Number | 9613418 |
| Service Supervisor | NIELSON, BRANDON | Water Source | Rig water |

| | | |
|------------------------------------|-------------|---------------------------|
| Temperature | 86.5 | [<80 F] |
| pH. | 7 | [between 6-8 pH] |
| Specific Gravity | | [1.000 - 1.005 see Chart] |
| Chart in Kit shows comparisons of: | Chlorides 0 | [<3,000 ppm @ 1.004 S.G.] |
| | Calcium | [<500 ppm @ 1.004 S.G.] |

| | | | |
|--------------------------|--------------------------|----------------------------------|-------------------------|
| PASS | FAIL | <u>Nessler's Nitrogen</u> | [Passing Parameters] |
| <input type="checkbox"/> | <input type="checkbox"/> | Color of Yellow | [<4.5 ppm (mg/L)] |
| | | | |
| | | <u>Tannin-Lignin</u> | |
| <input type="checkbox"/> | <input type="checkbox"/> | Color of Blue | [<25.0 ppm] |
| | | | |
| | | <u>Sulfate</u> | <200 |
| | | Degree of Clarity | [200 ppm] |
| <input type="checkbox"/> | <input type="checkbox"/> | Black X Visible | [if NO >200 ppm = FAIL] |
| | | | |
| | | <u>Iron (Fe)</u> | 0 |
| <input type="checkbox"/> | <input type="checkbox"/> | Degree of Orange | [<20.0 ppm] |

SUNDANCE MLD 13-22 4.5 PRODUCTION



Global Event Log

| Intersection | T1P | Intersection | T1P | Intersection | T1P |
|----------------------|----------------|-----------------|----------------|-----------------|----------------|
| 1 Starting Job | 19:39:03 43.00 | 2 Start Job | 20:20:45 48.00 | 3 Test Lines | 20:22:07 147.7 |
| 4 Pump Spacer 1 | 20:29:32 313.1 | 5 Pump Spacer 2 | 20:35:34 194.0 | 6 Pump Spacer 1 | 20:45:17 432.1 |
| 7 Pump Cement | 20:47:39 460.7 | 8 Shutdown | 20:57:33 80.69 | 9 Clean Lines | 20:57:39 66.41 |
| 10 Pump Displacement | 21:05:49 49.00 | 11 Bump Plug | 21:22:44 1734 | 12 Truck Test | 21:46:17 2846 |
| 13 End Job | 21:51:27 54.00 | 14 Ending Job | 21:53:27 54.00 | | |

Customer: SUNDANCE
Well Description: PRODUCTION

Job Date: 22-Jun-2012
UWI: 05-123-35709-00

Sales Order #: 9613418
ENSING 55