



Company	SUNDANCE ENERGY INC.
Well	MLD 13-22
Field	WATTENBERG
County	WELD
State	COLORADO
	Country USA

API #: 05-123-35709-00

SHL: 1120' FSL & 815' FWL SWSW

SEC 22 TWP 4N RGE 68W

Permanent Datum	GROUND LEVEL	Elevation	4920
Log Measured From	KELLY BUSHING		
Drilling Measured From	KELLY BUSHING		

Other Services	NONE
Elevation	

Date	6-JUL-2012
------	------------

Run Number	ONE
Depth Driller	7468

Depth Logger	7278
Bottom Logged Interval	7275

Bottom Log Interval	1270
Top Log Interval	6080
Overall Log Size	7.075" \times 11.0" \times 1.0" \times 1.0"

Open Hole Size	1.813
Type Fluid	WATER

Density / Viscosity	8.34 LB/GAL
Max. Recorded Temp.	NOT RECORD

Estimated Cement Top	6210
Time Well Ready	N/A

Time Logger on Bottom	N/A
Equipment Attached	1100434

Equipment Number	HD 0134
Location	FORT LUPTON,

Recorded By	SAM HOPPE
Witnessed By	DEAN ROGEFF

Borehole Record		
Run Number	Bit	To

0	0	0	0
1	1	1	1
2	2	2	2
3	3	3	3
4	4	4	4
5	5	5	5
6	6	6	6
7	7	7	7
8	8	8	8
9	9	9	9

--	--	--	--	--

Casing Record	Size	Wg

Surface String		
Prot. String		

Production String	4.5"	11.
Liner		

--	--	--	--


[illegible]

<<< Fold Here >>>	
<p>All interpretations are opinions based on inferences from electrical or other measurements and we cannot and do not guarantee the accuracy or correctness of any interpretation, and we shall not, except in the case of gross or willful negligence on our part, be liable or responsible for any loss, costs, damages, or expenses incurred or sustained by anyone resulting from any interpretation made by any of our officers, agents or employees. These interpretations are also subject to our general terms and conditions set out in our current Price Schedule.</p>	

Comments

DEPTH REF TO PSI OPEN HOLE LOGS DATED 22-JUN-2012.
RUN CBL FROM PBTD RECORDED AT 7278' TO ABOVE CEMENT TOP.
ESTIMATED CEMENT TOP RECORDED AT 6210'.

THANK YOU FOR CHOOSING PURE ENERGY!!

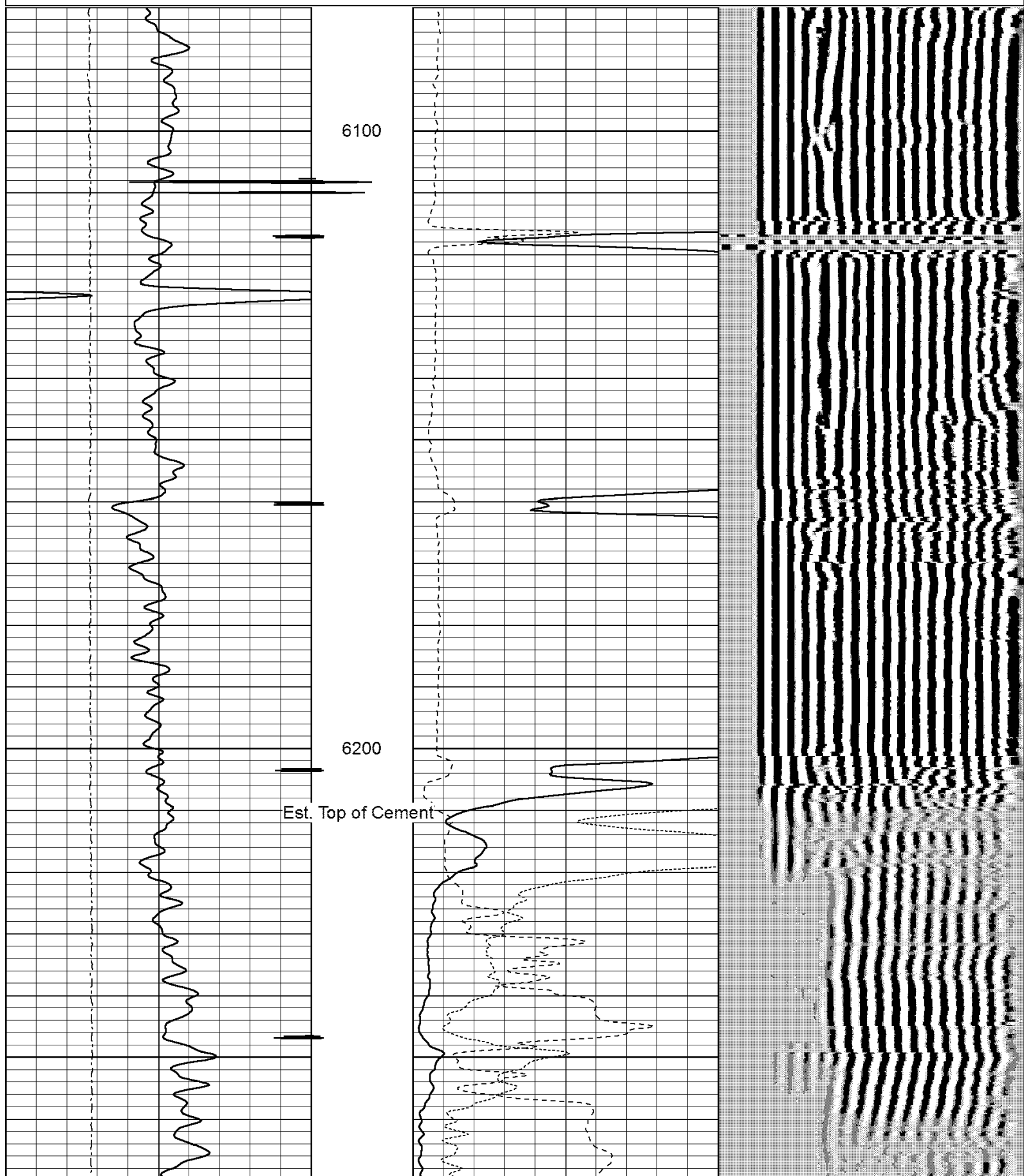
Sensor	Offset (ft)	Schematic	Description	Len (ft)	OD (in)	Wt (lb)
			STNDRD Standard Cable Head	1.00	1.44	10.00

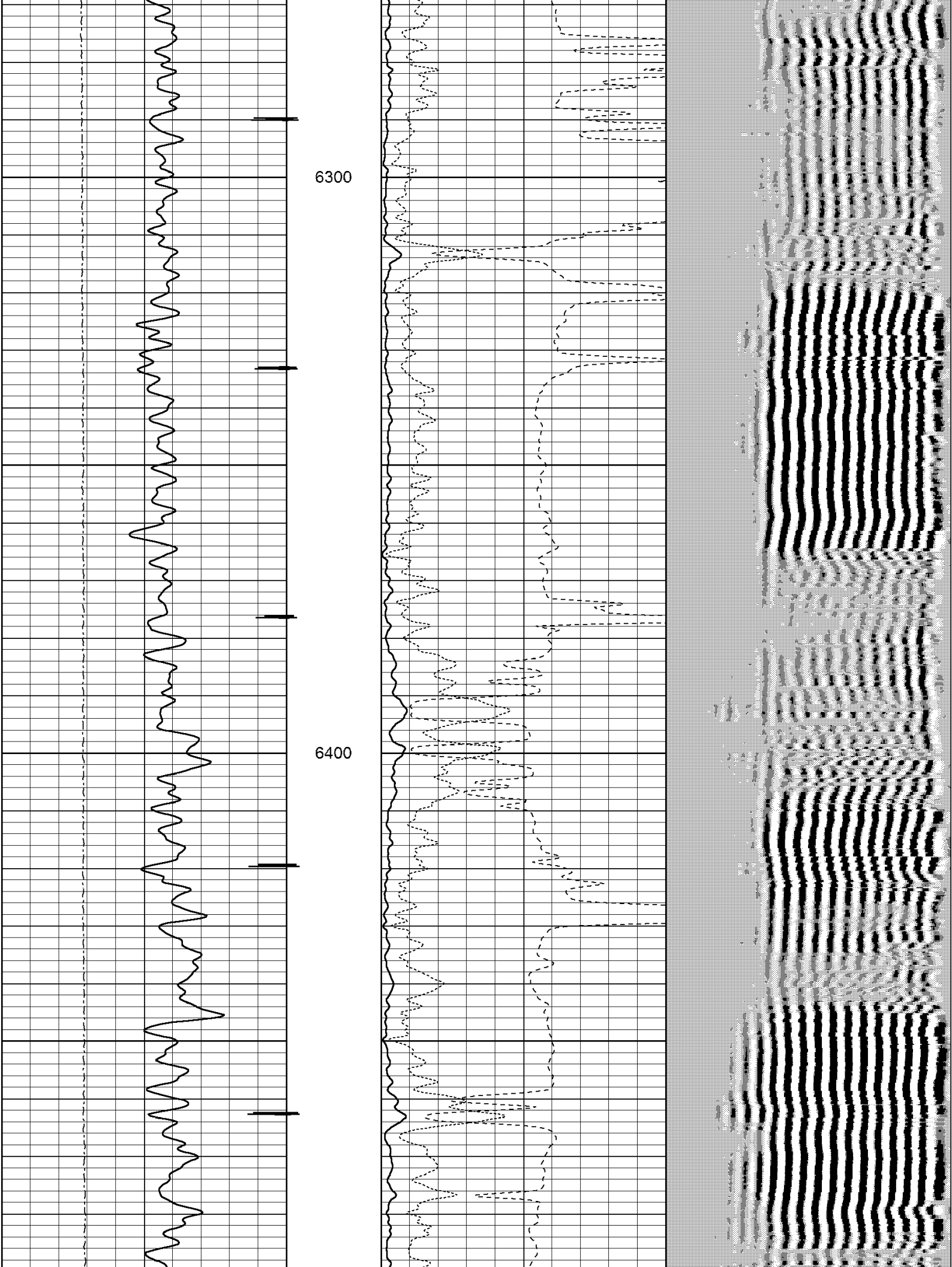
CCL	21.94		CCL-275tekco (2.75TEKCO) 2 3/4 TEK CCL Earth Mag	1.53	2.75	20.00
			SDSCENT Centralizer for testing	2.74	3.25	20.00
TEMP	15.75					
WVFS1	14.42					
WVFS2	14.42					
WVFS3	14.42		275CTEKSECWTWSLCANS-275RIB (12349.54 2 3/4" (R.I.B.) TOOL 3FT, 5FT and 8EA RIB SIGNALS 400 DEG "F" @20K PSI With Sliding Cans For Pressure Ballance	2.75	102.00	
WVFS4	14.42					
WVFS5	14.42					
WVFS6	14.42					
WVFS7	14.42					
WVFS8	14.42					
WVF3FT	13.67					
WVF5FT	12.63					
WVFCAL	8.83					
WVFTEMP	8.83					
WVFSYNC	8.83		SDSCENT Centralizer for testing	2.74	3.25	20.00
			GR-Tek-Co (Tek-Co2) 2 3/4 400deg Scint gamma	3.35	2.75	40.00
GR	3.78					
			SDSCENT Centralizer for testing	2.74	3.25	20.00

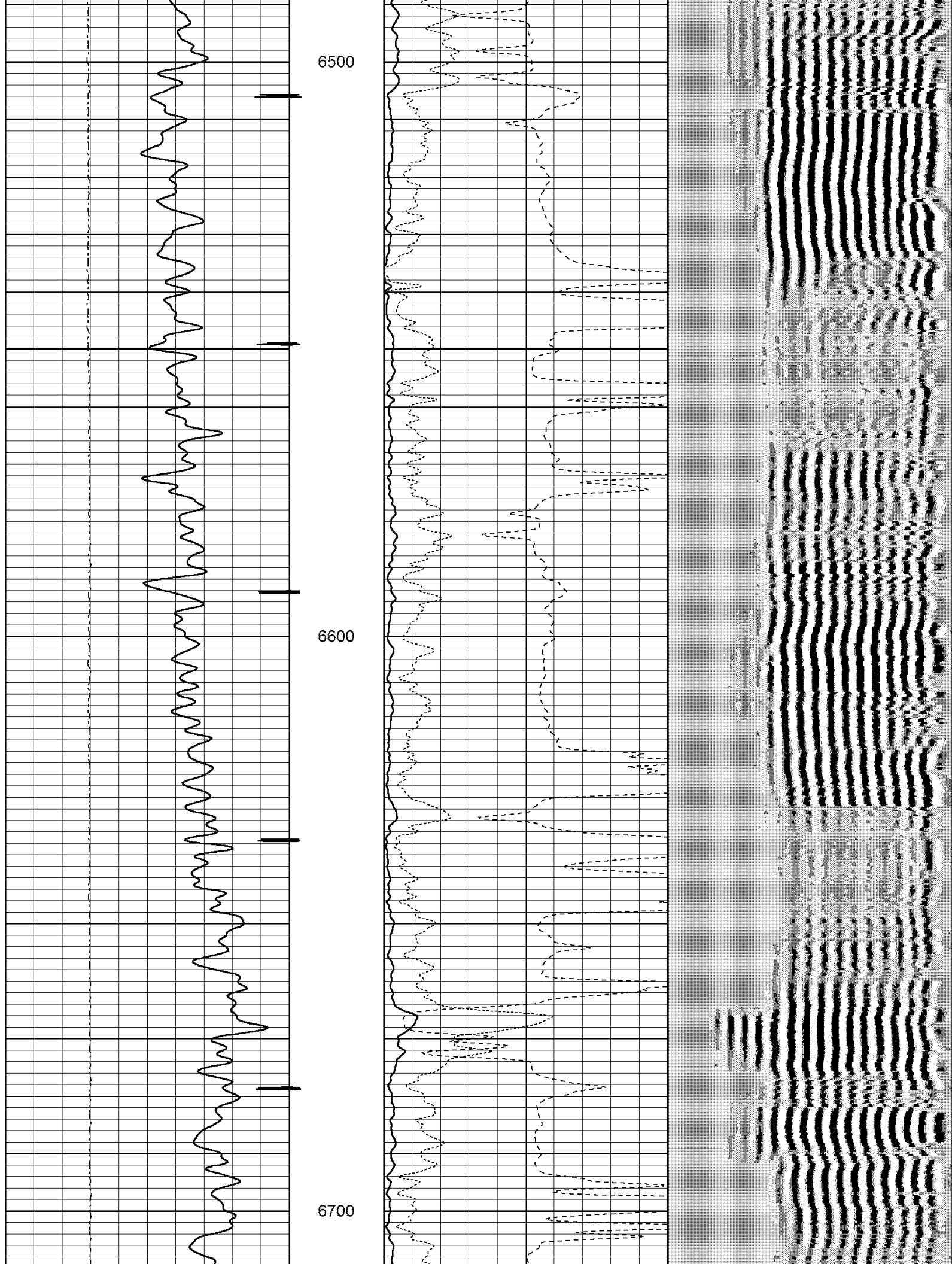
Dataset:	sundance_mld_13-22.db: 6jul12/mld_13-22/cbl/pass12
Total Length:	23.64 ft
Total Weight:	232.00 lb
O.D.	3.25 in

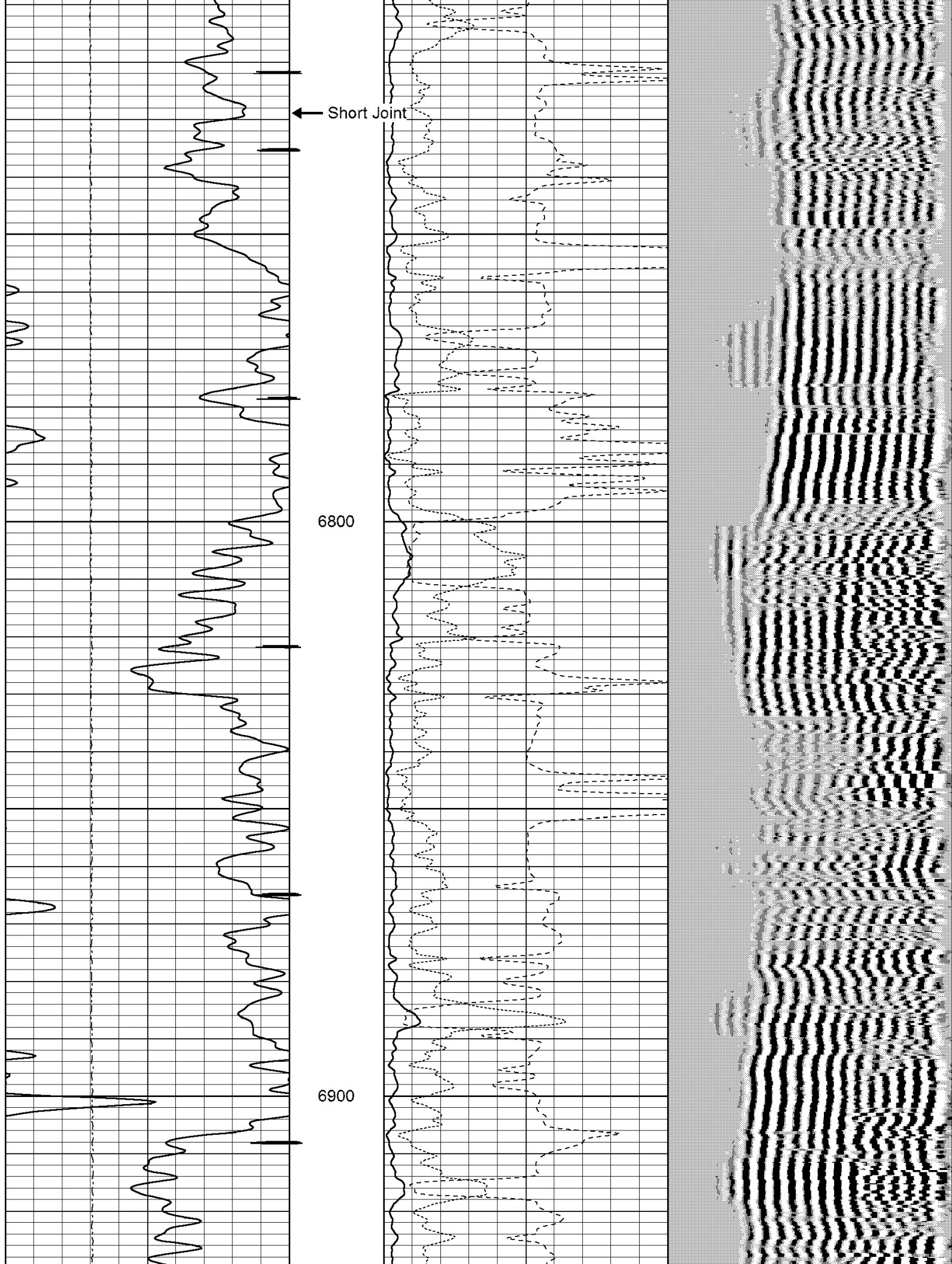
Database File:	sundance_mld_13-22.db
Dataset Pathname:	6jul12/mld_13-22/cbl/pass12
Presentation Format:	cbl

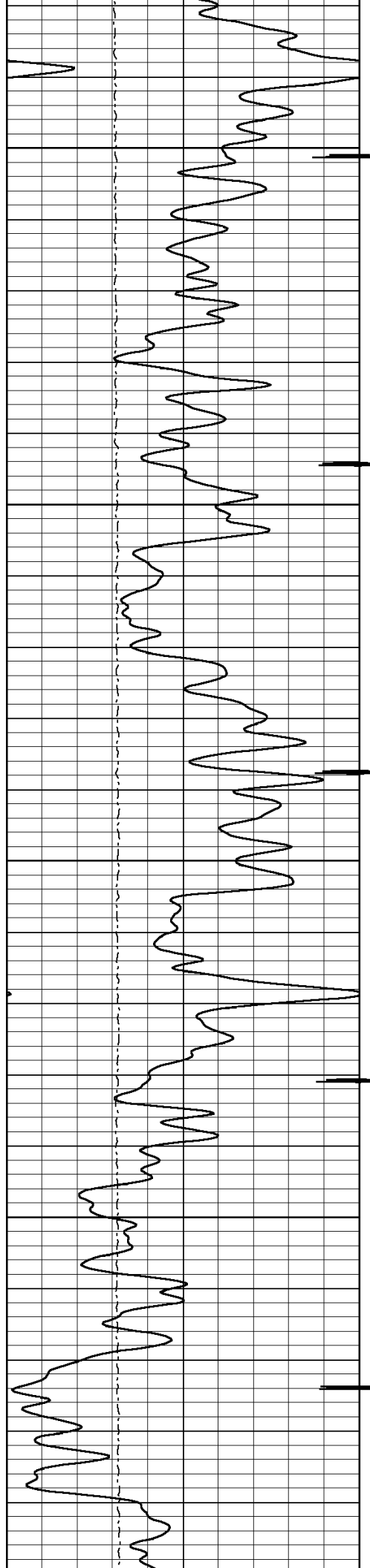
Collar Locator			0	3' Amplitude X 5 (mV)	20	200	5' Variable Density Log	1200
30	Gamma Ray	280	0	3' Amplitude (mV)	100			
0	Line Tension (lb)	5000	200	3' Travel Time (usec)	300			





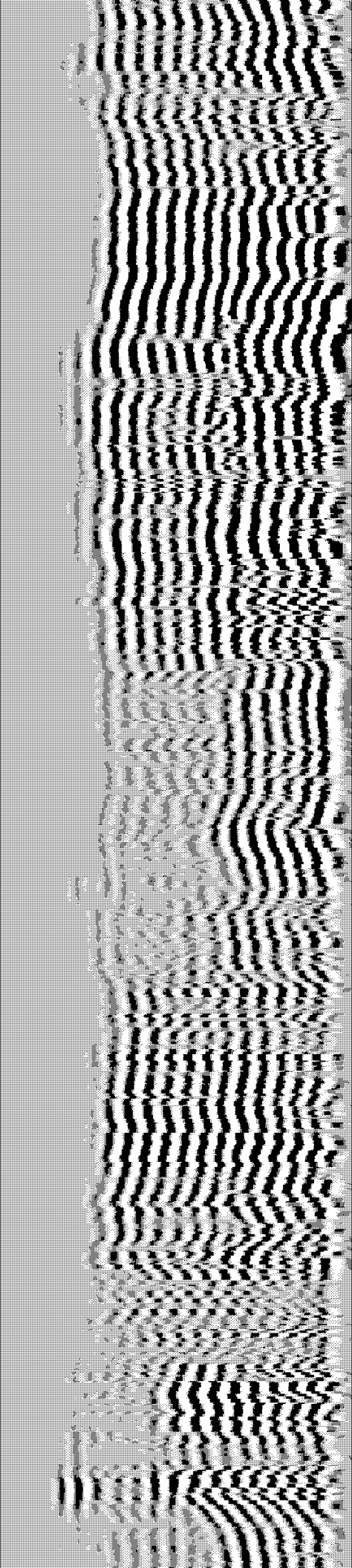
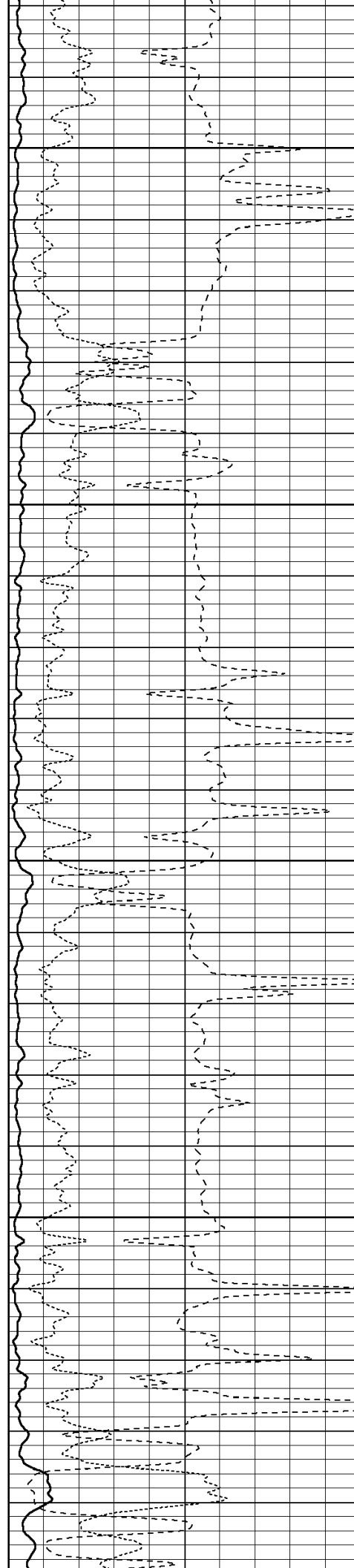


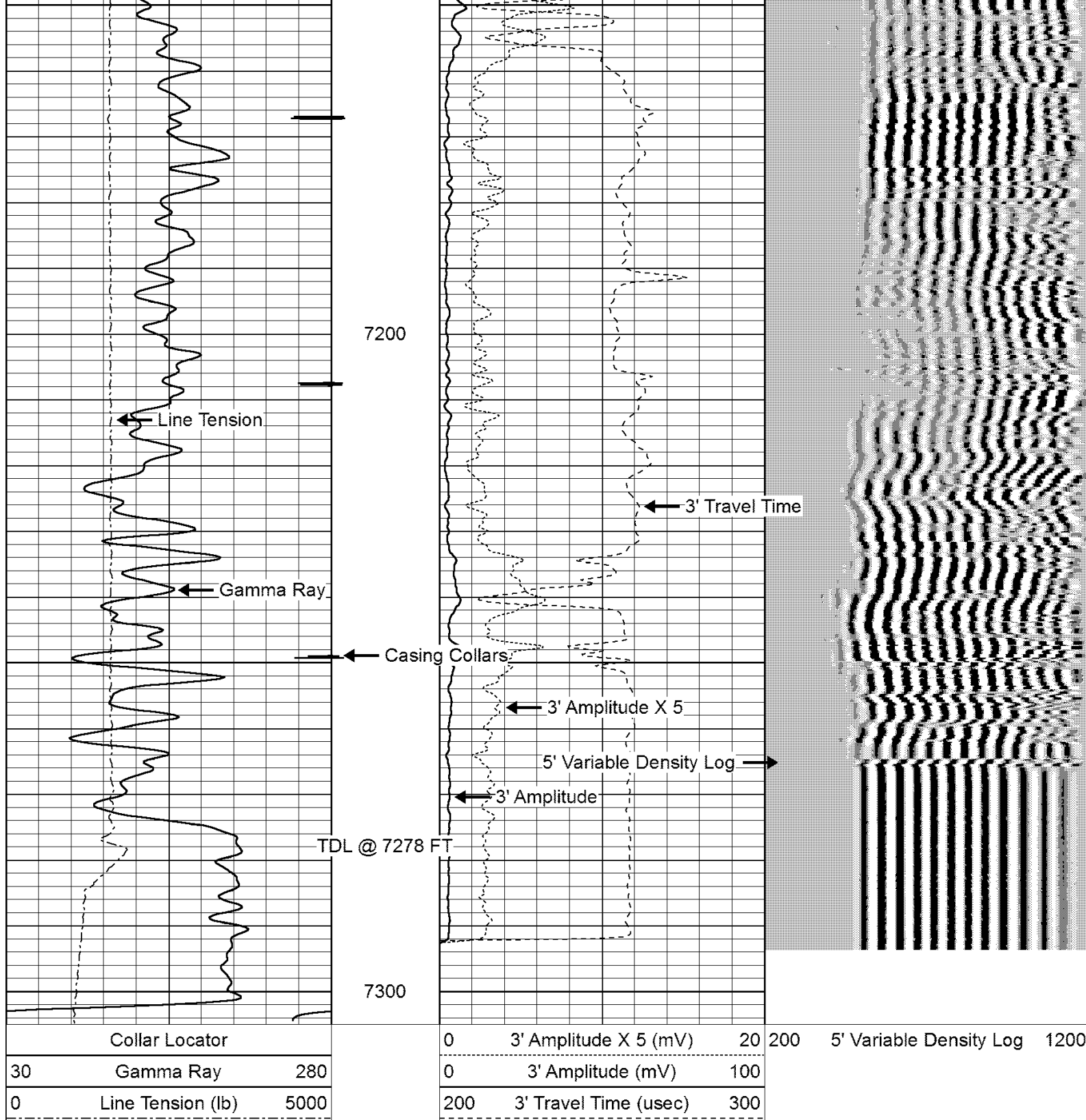




7000

7100





Calibration Report

Database File: sundance_mld_13-22.db
 Dataset Pathname: 6jul12/mld_13-22/cbl/pass12
 Dataset Creation: Fri Jul 06 11:46:14 2012 by Log SCH 111116

Gamma Ray Calibration Report

Serial Number: Tek-Co2
 Tool Model: Tek-Co
 Performed: Sat Jun 23 13:58:49 2012

Calibration Values: 1.0

Calibrator Value:	1.0	
Background Reading:	0.0	cps
Calibrator Reading:	1.0	cps
Sensitivity:	1.0000	/cps

Segmented Cement Bond Log Calibration Report

Serial Number:	1234	
Tool Model:	275RIB	
Calibration Casing Diameter:	4.500	in
Calibration Depth:	303.342	ft

Master Calibration, performed Fri Jul 06 10:24:52 2012:

	Raw (v)		Calibrated (mv)		Results	
	Zero	Cal	Zero	Cal	Gain	Offset
3'	0.083	1.141	0.000	81.196	76.728	-6.342
CAL	0.032	1.535				
5'	0.014	1.438	0.000	81.196	57.027	-0.824
SUM						
S1	0.096	1.598	0.000	100.000	66.577	-6.414
S2	0.119	1.666	0.000	100.000	64.640	-7.717
S3	0.138	1.626	0.000	100.000	67.183	-9.272
S4	0.103	1.877	0.000	100.000	56.386	-5.813
S5	0.136	2.102	0.000	100.000	50.846	-6.899
S6	0.166	2.056	0.000	100.000	52.921	-8.802
S7	0.092	1.652	0.000	100.000	64.088	-5.901
S8	0.108	1.604	0.000	100.000	66.835	-7.230

Internal Reference Calibration, performed Fri Jul 06 10:31:41 2012:

	Raw (v)		Calibrated (v)		Results	
	Zero	Cal	Zero	Cal	Gain	Offset
CAL	0.031	1.538	0.032	1.535	0.998	0.001


Air Zero Calibration, performed Fri Jul 06 10:27:43 2012:

	Raw (v)	Calibrated (v)	Results
	Zero	Zero	Offset
3'	0.033	0.000	0.050
5'	0.009	0.000	0.006
SUM			
S1	0.054	0.000	0.042
S2	0.039	0.000	0.080
S3	0.066	0.000	0.072
S4	0.069	0.000	0.034
S5	0.064	0.000	0.072
S6	0.123	0.000	0.043
S7	0.066	0.000	0.026
S8	0.062	0.000	0.046

Temperature Calibration Report

Serial Number:	1234
Tool Model:	275RIB
Performed:	Sat Jun 23 13:58:53 2012

	Reference	Reading
Low Reference:	75.00 degF	300.00 usec
High Reference:	400.00 degF	1282.00usec
Gain:	0.33	
Offset:	0.00	
Delta Spacing	1	

	Company	SUNDANCE ENERGY INC.		
	Well	MLD 13-22		
	Field	WATTENBERG		
	County	WELD		
	State	COLORADO	Country	USA