

Company: BP AMERICA

Well: S0 UTE 33-10;20-5

Field: BASIN FRUITLAND COAL

County: LA PLATA State: COLORADO

RESERVOIR SATURATION TOOL
GAMMA RAY
CASING COLLARS

County: LA PLATA

Field: BASIN FRUITLAND COAL

Location: 2105'FNL & 990' FEL

Well: S0 UTE 33-10;20-5

Company: BP AMERICA

LOCATION			
2105'FNL & 990' FEL		Elev.: K.B. 6924.00 ft	
		G.L. 6908.00 ft	
		D.F. 6923.00 ft	
Permanent Datum:	GROUND LEVEL	Elev.: 6908.00 ft	
Log Measured From:	KB	16.00 ft above Perm. Datum	
Drilling Measured From:	KB		
API Serial No.	Section 20	Township T33N	Range R10W

				Run 1	Run 2	Run
PVT DATA						
Oil Density						
Water Salinity						
Gas Gravity						
Bo						
Bw						
1/Bg						
Bubble Point Pressure						
Bubble Point Temperature						
Solution GOR						
Maximum Deviation						
CEMENTING DATA						
Primary/Squeeze				Primary		
Casing String No						
Lead Cement Type						
Volume						
Density						
Water Loss						
Additives						
Tail Cement Type						
Volume						
Density						
Water Loss						
Additives						
Expected Cement Top						

Logging Date	6-Jun-2012		
Run Number	1		
Depth Driller	3312 ft		
Schlumberger Depth	3302 ft		
Bottom Log Interval	3302 ft		
Top Log Interval	3050 ft		
Casing Fluid Type	WATER		
Salinity			
Density	8.3 lbm/gal		
Fluid Level	0 ft		
BIT/CASING/TUBING STRING			
Bit Size	8.625 in		
From	3343 ft		
To	0 ft		
Casing/Tubing Size	5.500 in		
Weight	15.5 lbm/ft		
Grade	K-55		
From	3343 ft		
To	3090 ft		
Maximum Recorded Temperatures	117 degF		
Logger On Bottom	6-Jun-2012	16:51	
Unit Number	357	FARMINGTON	
Recorded By	ROBERT SWEAT		
Witnessed By	RICK CONNERS		

Logging Date				
Run Number				
Depth Driller				
Schlumberger Depth				
Bottom Log Interval				
Top Log Interval				
Casing Fluid Type				
Salinity				
Density				
Fluid Level				BIT/CASING/TUBING STRING
Bit Size				
From				
To				
Casing/Tubing Size				
Weight				
Grade				
From				
To				
Maximum Recorded Temperatures				
Logger On Bottom				
Unit Number	Location			
Recorded By				
Witnessed By				

DEPTH SUMMARY LISTING

Date Created: 26-JUN-2009 15:36:32

Depth System Equipment

Depth Measuring Device		Tension Device		Logging Cable	
Type:	IDW-B	Type:	CMTD-B/A	Type:	1-32P
Serial Number:	1498	Serial Number:	1113	Serial Number:	3
Calibration Date:		Calibration Date:	1113	Length:	8500 FT
Calibrator Serial Number:	6034	Calibrator Serial Number:	1098		
Calibration Cable Type:	1-32P	Number of Calibration Points:	1	Conveyance Method:	Wireline
Wheel Correction 1:	-1			Rig Type:	LAND
Wheel Correction 2:	0				

Depth Control Parameters

Log Sequence:	Subsequent Log In the Well
Reference Log Name:	RST
Reference Log Run Number:	1
Reference Log Date:	6/25/09

Depth Control Remarks

1. GR PEEK 3297
2. GR PEEK 3327
3. 2ND LOG IN WELL
- 4.
- 5.
- 6.

DISCLAIMER

THE USE OF AND RELIANCE UPON THIS RECORDED-DATA BY THE HEREIN NAMED COMPANY (AND ANY OF ITS AFFILIATES, PARTNERS, REPRESENTATIVES, AGENTS, CONSULTANTS AND EMPLOYEES) IS SUBJECT TO THE TERMS AND CONDITIONS AGREED UPON BETWEEN SCHLUMBERGER AND THE COMPANY, INCLUDING: (a) RESTRICTIONS ON USE OF THE RECORDED-DATA; (b) DISCLAIMERS AND WAIVERS OF WARRANTIES AND REPRESENTATIONS REGARDING COMPANY'S USE OF AND RELIANCE UPON THE RECORDED-DATA; AND (c) CUSTOMER'S FULL AND SOLE RESPONSIBILITY FOR ANY INFERENCE DRAWN OR DECISION MADE IN CONNECTION WITH THE USE OF THIS RECORDED-DATA.

OTHER SERVICES1	OTHER SERVICES2
OS1:	OS1:
OS2: PLUG	OS2:
OS3: JUNKBASKET	OS3:
OS4:	OS4:
OS5:	OS5:
REMARKS: RUN NUMBER 1	REMARKS: RUN NUMBER 2
LOG RAN IN IC MODE	

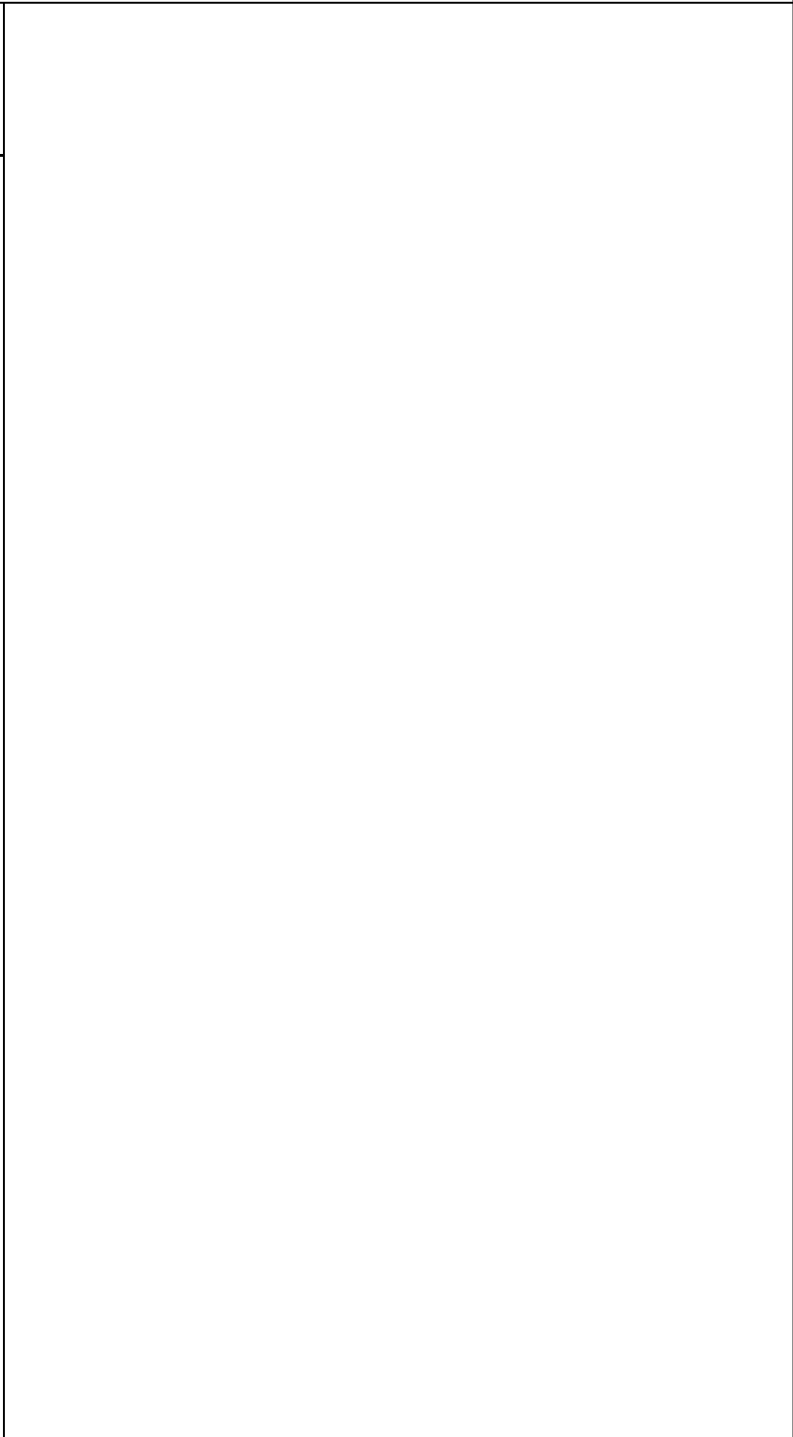
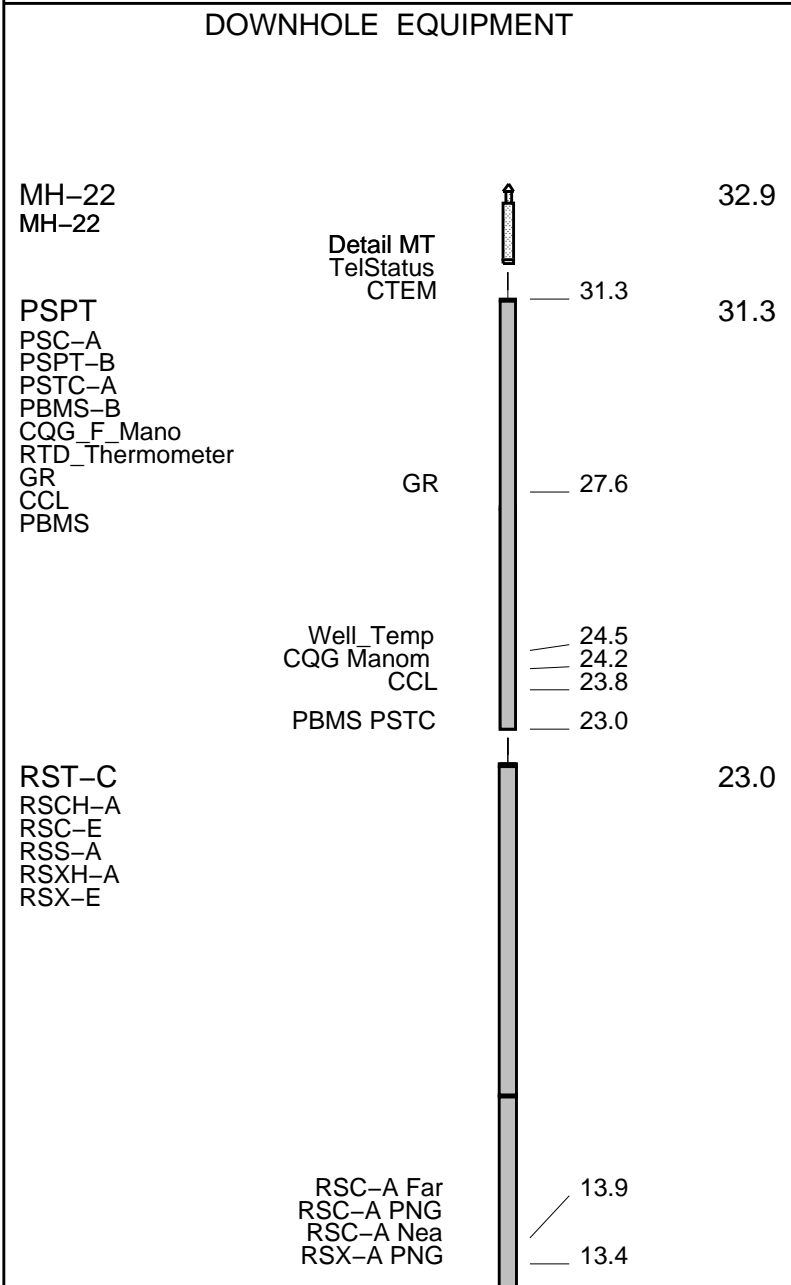
CREW JOEY F & ROGER S	

RUN 1			RUN 2		
SERVICE ORDER #:			SERVICE ORDER #:		
PROGRAM VERSION:			PROGRAM VERSION:		
FLUID LEVEL:			FLUID LEVEL:		
LOGGED INTERVAL	START	STOP	LOGGED INTERVAL	START	STOP

EQUIPMENT DESCRIPTION					
RUN 1			RUN 2		

SURFACE EQUIPMENT

WITM-A
PSC_16MHZ



Tension HV 0.0
TOOL ZERO

MAXIMUM STRING DIAMETER 1.72 IN
MEASUREMENTS RELATIVE TO TOOL ZERO
ALL LENGTHS IN FEET

Output DLIS Files

DEFAULT RST_PSP_014LUP FN:13 PRODUCER 06-Jun-2012 16:41 3308.5 FT 2944.1 FT

OP System Version: 19C0-187

RST-C SRPC-5095-H2-2011-OP19_I PSPT 19C0-187

PIP SUMMARY

Time Mark Every 60 S

MAIN LOG

COAL INDICATOR
From SpareConstant_1 to
SpareCurve_2

COAL INDICATOR
From RST FarICWin COR to RST NearICWin COR

COLLARS
From CCLD to T1

F2H (F2H)
0.12 (----) 1.12

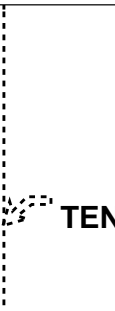
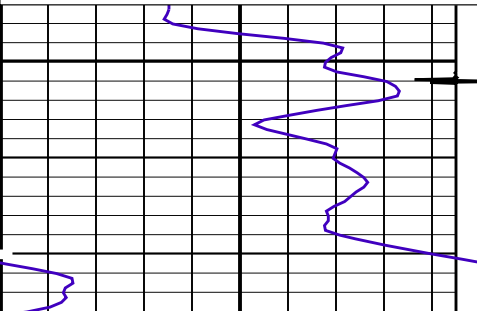
Gamma Ray (GR)
(GAPI) 0 150

Far IC Windowed C/O Ratio (FWCO)
4 (----) 0

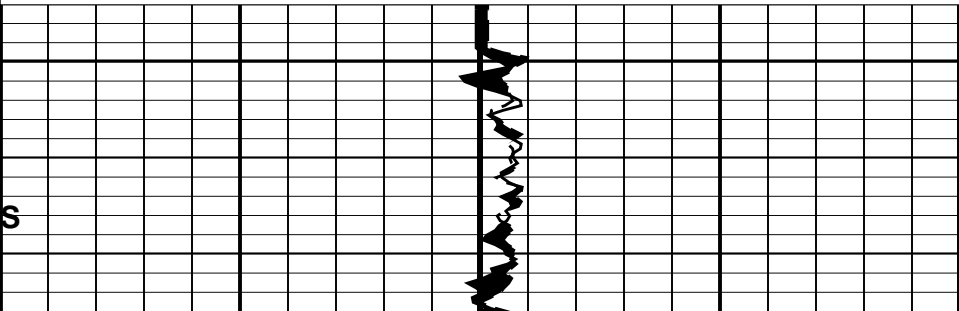
Discriminated CCL (CCLD)
(V) 9 -0.5

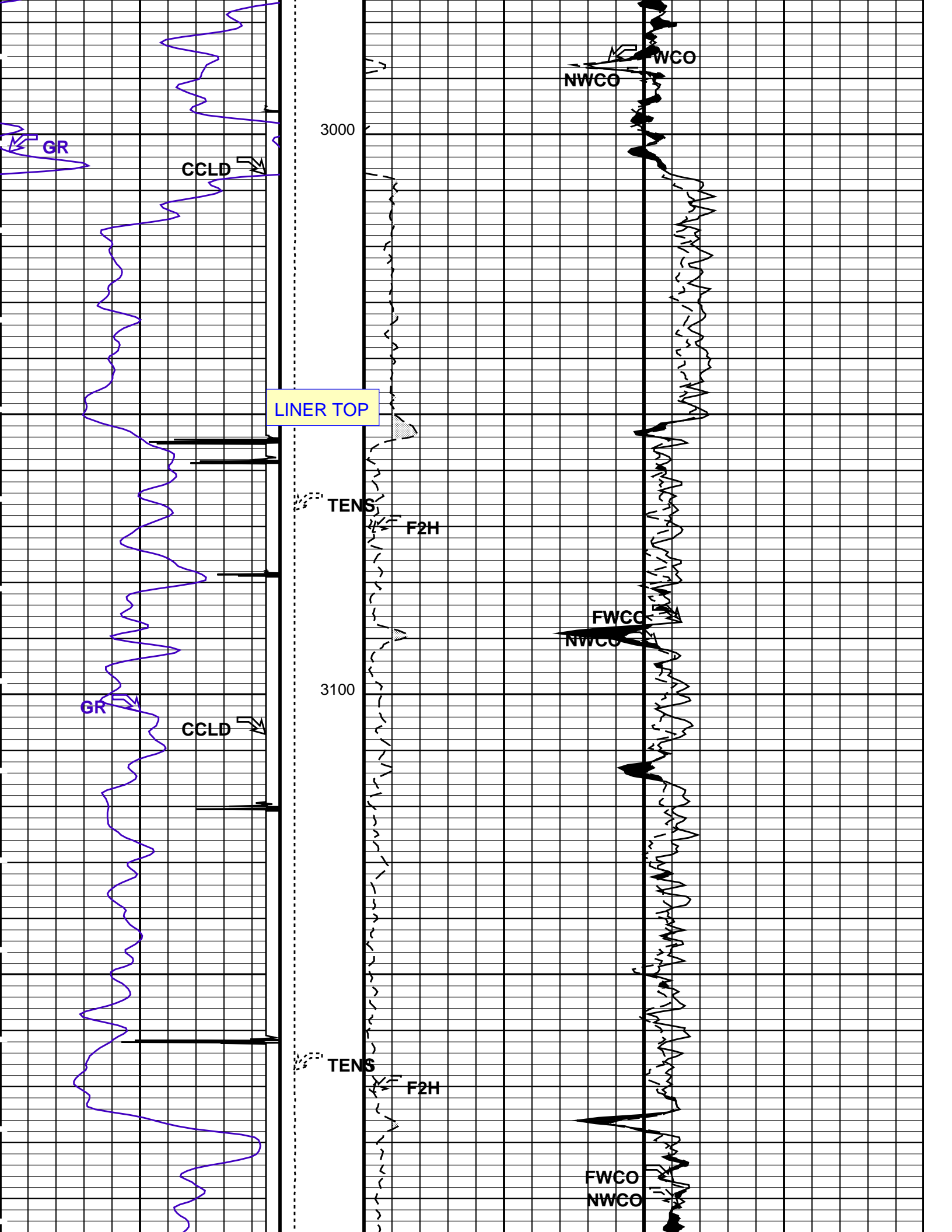
Tension
(TENS)
(LBF) 0 4000

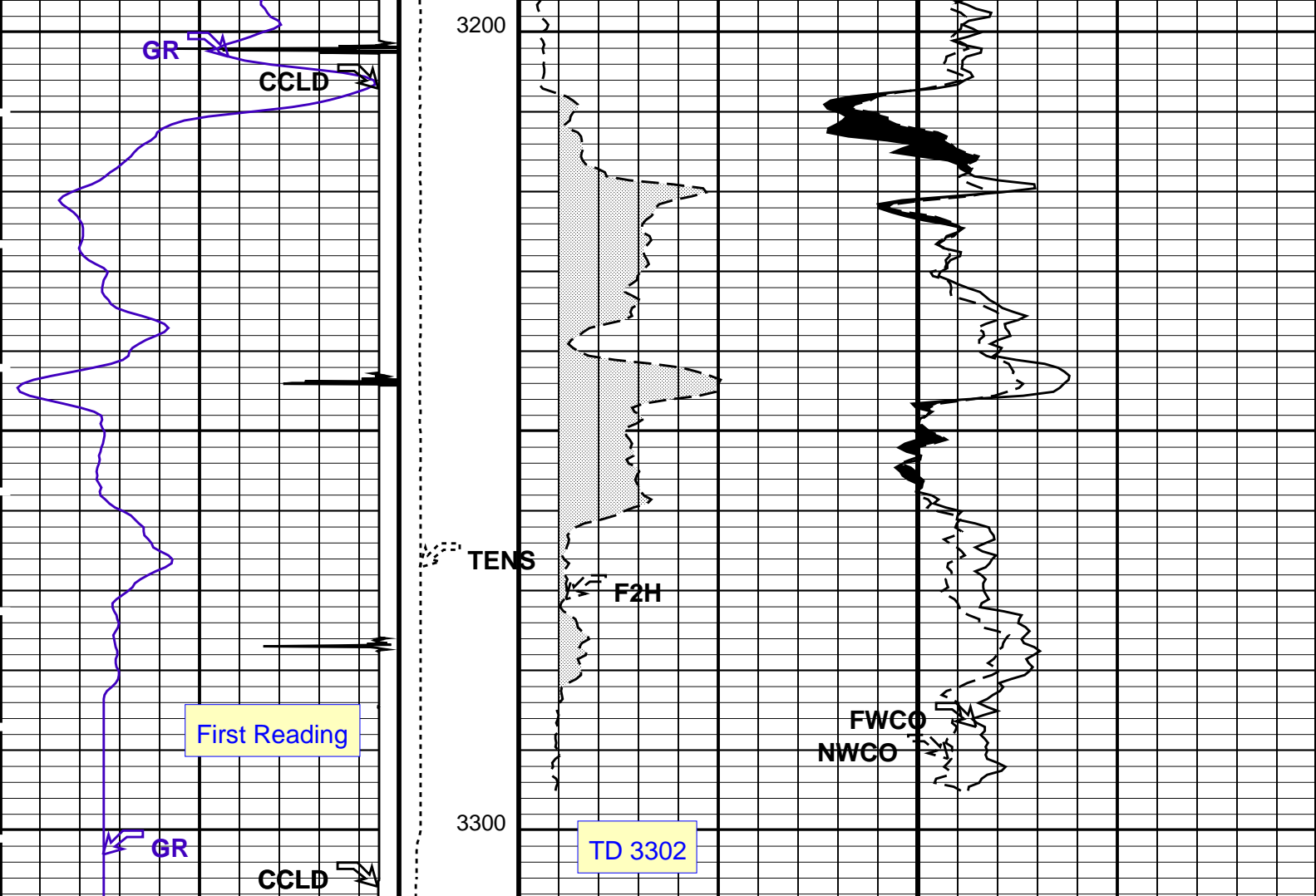
Near IC Windowed C/O Ratio (NWCO)
4 (----) 0



TENS







Discriminated CCL (CCLD)			Tension (TENS) (LBF)	Near IC Windowed C/O Ratio (NWCO)	
9	(V)	-0.5		4	(----
			0	4000	
Gamma Ray (GR)			Far IC Windowed C/O Ratio (FWCO)		
0	(GAPI)	150	4	(----	0
COLLARS From CCLD to T1					
			0.12	F2H (F2H) (----	1.12
			COAL INDICATOR From RST_FarICWin_COR to RST_NearICWin_COR		
			COAL INDICATOR From SpareConstant_1 to SpareCurve_2		

PIP SUMMARY

Time Mark Every 60 S		
Parameters		
DLIS Name	Description	Value
RST-C: Reservoir Saturation Pro Tool C TIER_IC	RST IC Acquisition Mode	0_CO_Yield_and_Spectrolith
Format: RST IC_1 Vertical Scale: 5" per 100'		Graphics File Created: 06-Jun-2012 16:41
OP System Version: 19C0-187		
RST-C	SRPC-5095-H2-2011-OP19_I	PSPT 19C0-187

Output DLIS Files

DEFAULT

RST_PSP_014LUP

FN:13

PRODUCER

06-Jun-2012 16:41

Company: **BP AMERICA**

Schlumberger

Well: **S0 UTE 33-10;20-5**

Field: **BASIN FRUITLAND COAL**

County: **LA PLATA**

State: **COLORADO**

RESERVOIR SATURATION TOOL

GAMMA RAY

CASING COLLARS