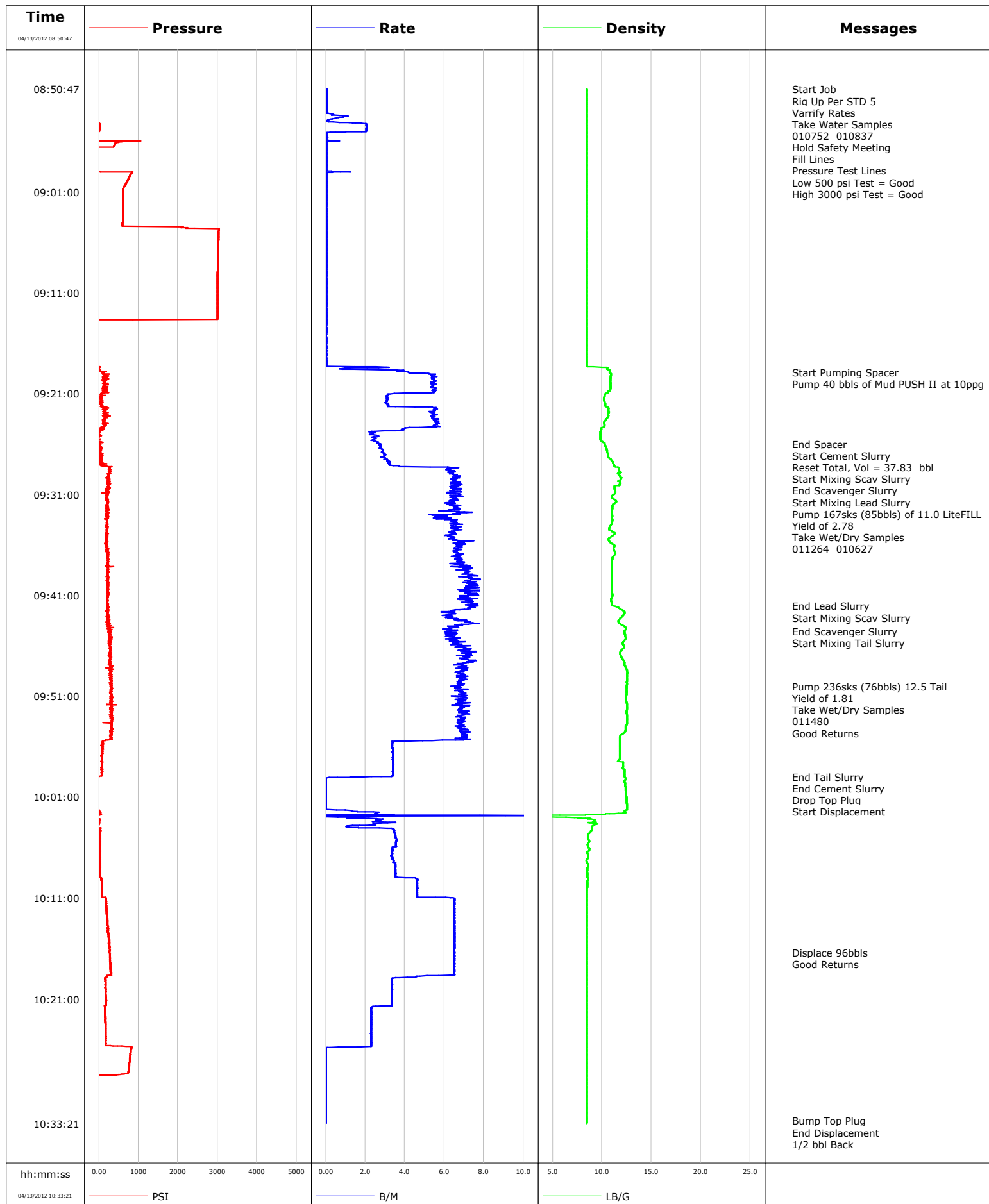


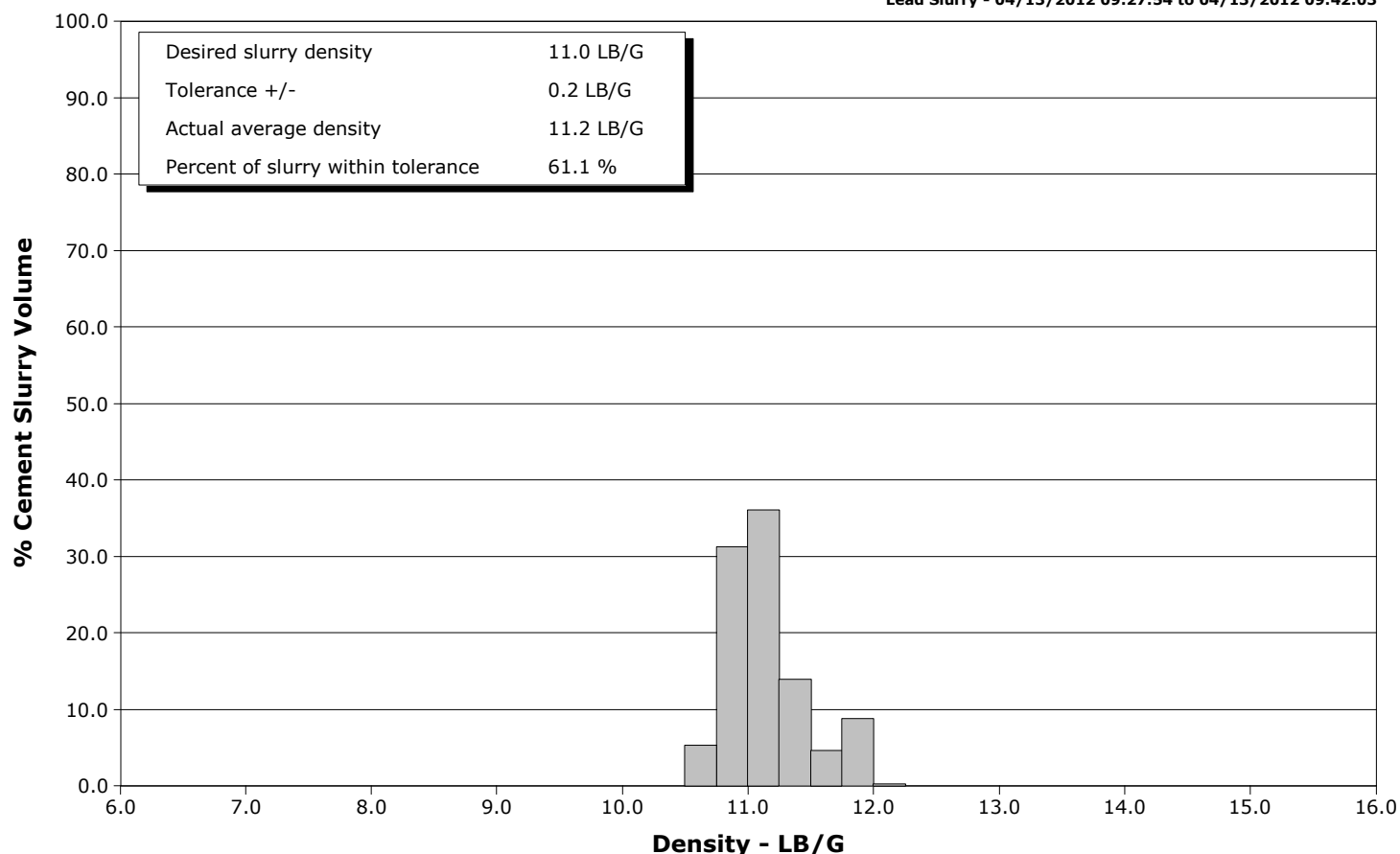
<b>Well</b>	ALBERTSON-DHS-G15,1C-15	<b>Client</b>	ENCANA
<b>Field</b>	MESAGAR	<b>SIR No.</b>	759705
<b>Engineer</b>	DANT RYAN	<b>Job Type</b>	10 3/4 SURFACE
<b>Country</b>	United States	<b>Job Date</b>	04-13-2012



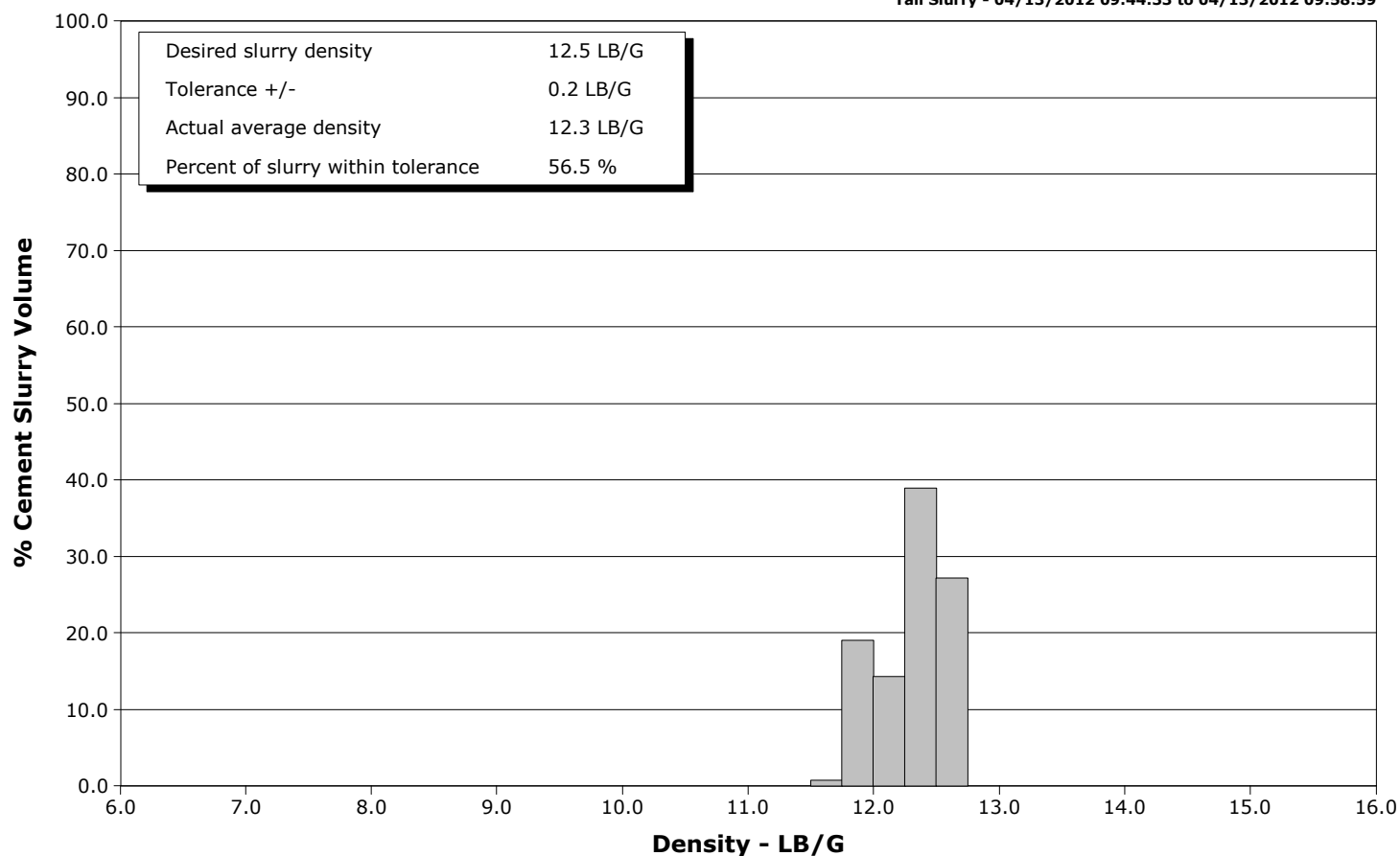
**Well** ALBERTSON-DHS-G15,1C-15  
**Field** MESAGAR  
**Engineer** DANT RYAN  
**Country** United States

**Client** ENCANA  
**SIR No.** 759705  
**Job Type** 10 3/4 SURFACE  
**Job Date** 04-13-2012

**Lead Slurry - 04/13/2012 09:27:54 to 04/13/2012 09:42:03**



**Tail Slurry - 04/13/2012 09:44:33 to 04/13/2012 09:58:59**



				Customer ENCANA			Job Number 759705		
Well ALBERTSON-DHS-G15,1C-15 1C-15				Location (legal) G15			Schlumberger Location		
							Job Start Apr/13/2012		
Field MESAGAR		Formation Name/Type Shale		Deviation deg		Bit Size 14.8 in		Well MD 1028.0 ft	
County MESA		State/Province CO		BHP psi		BHST 93 degF		BHCT 80 degF	
Well Master 0631363812		API/UWI						Pore Press. Gradient lb/gal	
Rig Name PATTERSON 326		Drilled For Gas		Service Via Land		Casing/Liner			
						Depth, ft		Size, in	
						Weight, lb/ft		Grade	
						Thread			
Offshore Zone		Well Class New		Well Type Development		120.0		20.0	
						94.0		N/A	
						1028.0		10.8	
						40.5		J55	
						BUTT			
Drilling Fluid Type Bentonite		Max. Density 8.90 lb/gal		Plastic Viscosity 15.000 cP		Tubing/Drill Pipe			
						T/D		Depth, ft	
						Size, in		Weight, lb/ft	
						Grade		Thread	
Service Line Cementing		Job Type 10 3/4 SURFACE							
Max. Allowed Tub. Press psi		Max. Allowed Ann. Press psi		WH Connection Single Cement head		Perforations/Open Hole			
						Top, ft		Bottom, ft	
						shot/ft		No. of Shots	
						Total Interval ft			
						ft		ft	
						ft		ft	
						ft		ft	
						Treat Down Casing		Displacement 96.0 bbl	
						Packer Type		Packer Depth ft	
						Tubing Vol. bbl		Casing Vol. 101.0 bbl	
						Annular Vol. 119.0 bbl		Openhole Vol. 237.0 bbl	
Casing/Tubing Secured <input checked="" type="checkbox"/>		1 Hole Vol. Circulated prior to Cement <input checked="" type="checkbox"/>		Casing Tools		Squeeze Job			
Lift Pressure 459 psi				Shoe Type Float		Squeeze Type			
Pipe Rotated <input type="checkbox"/>		Pipe Reciprocated <input type="checkbox"/>		Shoe Depth 1028.0 ft		Tool Type			
No. Centralizers		Top Plugs 1		Bottom Plugs		Stage Tool Type		Tool Depth ft	
Cement Head Type Single						Stage Tool Depth ft		Tail Pipe Size in	
Job Scheduled For Apr/13/2012 07:00		Arrived on Location Apr/13/2012 07:00		Leave Location Apr/13/2012 11:00		Collar Type Float		Tail Pipe Depth ft	
						Collar Depth 983.0 ft		Sqz. Total Vol. bbl	
Date	Time 24-hr clock	Treating Pressure PSI	Flow Rate B/M	Density LB/G	Volume BBL	Message			
04/13/2012	08:50:47	-56	0.1	8.46	0.6	Started Acquisition			
04/13/2012	08:50:50	-56	0.1	8.46	0.6	Rig Up Per STD 5			
04/13/2012	08:50:51	-56	0.1	8.46	0.6	Hold Safety Meeting			
04/13/2012	08:51:02	-56	0.1	8.46	0.6	Pressure Test Lines			
04/13/2012	08:51:10	-56	0.1	8.46	0.7	Low 500 psi Test = Good			
04/13/2012	08:52:27	-55	0.1	8.45	0.7				
04/13/2012	08:54:07	-23	1.2	8.46	0.2				
04/13/2012	08:55:47	-34	0.0	8.46	2.2				
04/13/2012	08:57:27	-53	0.0	8.46	2.2				
04/13/2012	08:59:07	833	0.0	8.46	2.4				
04/13/2012	09:00:47	609	0.0	8.46	2.4				
04/13/2012	09:02:27	604	0.0	8.46	2.5				
04/13/2012	09:04:07	600	0.0	8.46	2.5				
04/13/2012	09:05:47	3016	0.0	8.46	2.6				
04/13/2012	09:07:27	3009	0.0	8.46	2.6				
04/13/2012	09:09:07	3002	0.0	8.46	2.6				
04/13/2012	09:10:47	2997	0.0	8.46	2.7				
04/13/2012	09:12:27	2994	0.0	8.46	2.7				
04/13/2012	09:14:07	-36	0.0	8.46	2.8				
04/13/2012	09:15:47	-32	0.0	8.46	2.8				
04/13/2012	09:17:27	-27	0.0	8.46	2.9				

Well ALBERTSON-DHS-G15,1C-15 1C-15			Field MESAGAR		Job Start Apr/13/2012		Customer ENCANA		Job Number 759705	
Date	Time 24-hr clock	Treating Pressure PSI	Flow Rate B/M	Density LB/G	Volume BBL	Message				
04/13/2012	09:18:55	76	4.2	10.76	4.5	Pump 40 bbls of Mud PUSH II at 10ppg				
04/13/2012	09:19:07	111	5.5	10.90	5.4					
04/13/2012	09:20:47	218	5.5	10.64	14.5					
04/13/2012	09:22:27	109	5.5	10.65	20.5					
04/13/2012	09:24:07	150	5.5	10.27	29.7					
04/13/2012	09:25:47	29	2.7	10.05	35.0					
04/13/2012	09:26:00	21	2.8	10.28	35.6	End Spacer				
04/13/2012	09:26:02	53	2.8	10.26	35.7	Start Cement Slurry				
04/13/2012	09:26:03	25	2.8	10.28	35.7	Reset Total, Vol = 37.83 bbl				
04/13/2012	09:26:05	-10	2.8	10.28	35.8	Start Mixing Scav Slurry				
04/13/2012	09:27:27	70	3.1	10.82	39.7					
04/13/2012	09:27:50	19	3.2	11.11	41.0	End Scavenger Slurry				
04/13/2012	09:27:54	51	3.2	11.12	41.2	Start Mixing Lead Slurry				
04/13/2012	09:28:23	257	6.6	11.69	43.1	Pump 167sks (85bbls) of 11.0 LiteFILL				
04/13/2012	09:28:40	244	6.5	11.77	44.9	Yield of 2.78				
04/13/2012	09:29:00	223	6.4	11.67	47.0	Take Wet/Dry Samples				
04/13/2012	09:29:07	269	6.5	11.80	47.7					
04/13/2012	09:29:12	265	6.8	11.85	48.3	011264 010627				
04/13/2012	09:30:47	270	6.8	11.36	58.7					
04/13/2012	09:32:27	244	6.8	11.03	69.5					
04/13/2012	09:34:07	205	6.3	10.84	80.1					
04/13/2012	09:35:47	209	7.0	10.85	90.9					
04/13/2012	09:37:27	243	6.5	11.03	102.1					
04/13/2012	09:39:07	223	7.3	10.97	113.7					
04/13/2012	09:40:47	239	6.4	11.02	125.5					
04/13/2012	09:42:03	213	6.2	11.17	133.4	End Lead Slurry				
04/13/2012	09:42:22	202	6.4	11.87	135.4	Start Mixing Scav Slurry				
04/13/2012	09:42:27	232	6.2	12.03	136.0					
04/13/2012	09:44:07	241	6.2	12.33	146.5					
04/13/2012	09:44:32	304	6.4	12.29	149.1	End Scavenger Slurry				
04/13/2012	09:44:33	282	6.4	12.28	149.2	Start Mixing Tail Slurry				
04/13/2012	09:45:47	272	6.4	12.08	157.0					
04/13/2012	09:47:27	293	6.4	12.17	167.5					
04/13/2012	09:49:07	315	6.4	12.55	178.0					
04/13/2012	09:50:00	315	6.4	12.50	183.6	Pump 236sks (76bbls) 12.5 Tail				
04/13/2012	09:50:21	335	6.2	12.48	185.8	Good Returns				
04/13/2012	09:50:47	335	6.4	12.48	188.6					
04/13/2012	09:52:27	335	6.4	12.48	199.1					
04/13/2012	09:54:07	327	6.5	12.37	209.6					
04/13/2012	09:55:47	105	3.3	11.78	218.9					
04/13/2012	09:57:27	72	3.2	11.63	224.3					
04/13/2012	09:58:59	-5	2.1	12.28	229.2	End Tail Slurry				
04/13/2012	09:59:00	-16	2.1	12.29	229.3	End Cement Slurry				
04/13/2012	09:59:04	-54	1.4	12.36	229.4	Drop Top Plug				
04/13/2012	09:59:05	-44	1.4	12.37	229.4	Start Displacement				
04/13/2012	09:59:07	-33	1.4	12.37	229.5					
04/13/2012	10:00:47	-36	1.3	12.44	232.6					
04/13/2012	10:02:27	33	2.0	12.33	234.8					
04/13/2012	10:04:07	36	3.2	8.96	238.8					
04/13/2012	10:05:47	27	3.3	8.54	244.3					
04/13/2012	10:07:27	24	3.2	8.45	249.7					
04/13/2012	10:09:07	63	4.3	8.53	255.2					
04/13/2012	10:10:47	73	4.4	8.46	262.6					
04/13/2012	10:12:27	196	6.4	8.46	272.9					

Well ALBERTSON-DHS-G15,1C-15 1C-15			Field MESAGAR		Job Start Apr/13/2012	Customer ENCANA	Job Number 759705
Date	Time 24-hr clock	Treating Pressure PSI	Flow Rate B/M	Density LB/G	Volume BBL	Message	
04/13/2012	10:15:47	264	6.4	8.46	293.9		
04/13/2012	10:16:25	269	6.2	8.46	297.8	Displace 96bbls	
04/13/2012	10:16:26	270	6.2	8.46	297.9	Good Returns	
04/13/2012	10:17:27	290	6.2	8.46	304.4		
04/13/2012	10:19:07	161	3.3	8.46	313.8		
04/13/2012	10:20:47	169	3.2	8.46	319.2		
04/13/2012	10:22:27	160	2.2	8.46	323.9		
04/13/2012	10:24:07	170	2.3	8.46	327.6		
04/13/2012	10:25:47	832	1.8	8.46	331.3		
04/13/2012	10:27:27	767	0.0	8.46	331.4		
04/13/2012	10:29:07	-43	0.0	8.46	331.4		
04/13/2012	10:30:47	-43	0.0	8.46	331.4		
04/13/2012	10:32:27	-43	0.0	8.46	331.4		
04/13/2012	10:33:06	-43	0.0	8.46	331.4	Bump Top Plug	
04/13/2012	10:33:08	-42	0.0	8.46	331.4	1/2 bbl Back	

### Post Job Summary

Average Pump Rates, bbl/min					Volume of Fluid Injected, bbl			
Slurry 3.5	N2	Mud	Maximum Rate 7.8	Total Slurry 331.8	Mud 0.0	Spacer 36.0	N2	
Treating Pressure Summary, psi					Breakdown Fluid			
Maximum 3033	Final -43	Average 553	Bump Plug to 672	Breakdown	Type	Volume bbl	Density lb/gal	
Avg. N2 Percent %		Designed Slurry Volume 161.0 bbl		Displacement 102.0 bbl	Mix Water Temp 50 degF	Cement Circulated to Surface? <input checked="" type="checkbox"/>	Volume 40.0 bbl	
						Washed Thru Perfs <input type="checkbox"/>	To ft	
Customer or Authorized Representative NORMAN MCCREARY				Schlumberger Supervisor DANT RYAN		Circulation Lost <input type="checkbox"/>	Job Completed <input checked="" type="checkbox"/>	
						-	-	