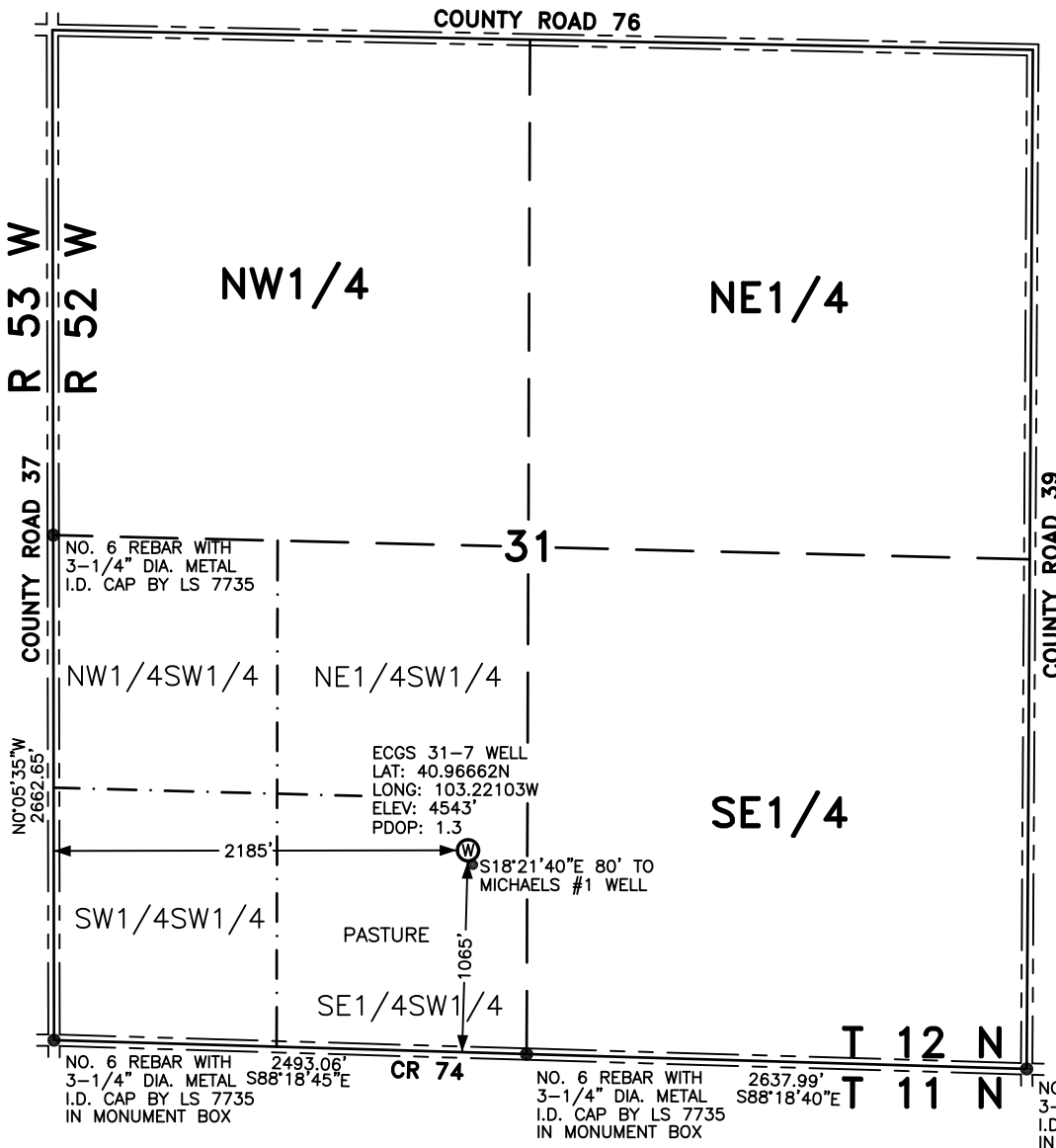


WELL LOCATION FOR MERCHANT ENERGY PARTNERS, LLC



NOTES

BEARINGS SHOWN HEREON ARE
BASED UPON RTK GPS
OBSERVATIONS

SEE IMPROVEMENT PLAT FOR
IMPROVEMENTS WITHIN 400' OF
LOCATION. (SHEET 2)

USGS QUAD MAP:
PADRONI NW, COLO.

LAT/LONG VALUES ARE NAD83

ELEVATIONS BASED ON NAVD 1988

ALL DISTANCES TO SECTION LINES
ARE MEASURED PERPENDICULAR
TO AND ARE AT RIGHT ANGLES
TO SAID SECTION LINES.

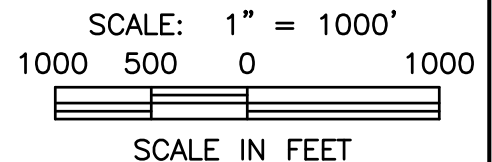
LEGEND

⊙ FIELD SURVEYED
WELL LOCATION

== ROAD

-x-x- FENCE

THIS WELL LOCATION PLAT HAS BEEN PREPARED FOR MERCHANT ENERGY PARTNERS, LLC,
TO LOCATE THE ECGS 31-7 WELL BEING 2185 FEET FROM THE WEST LINE AND
1065 FEET FROM THE SOUTH LINE IN THE SE1/4SW1/4 OF SECTION 31,
TOWNSHIP 12 NORTH, RANGE 52 WEST OF THE 6TH P.M., LOGAN COUNTY, COLORADO.
THE SURFACE ELEVATION AT THIS POINT IS 4543 FEET.
THIS IS NOT A LAND SURVEY PLAT.



LEIBERT-McATEE & ASSOCIATES, INC.

P.O. BOX 442 615 SOUTH TENTH AVENUE
STERLING, CO 80751 970-522-1960

FIELD DATE: 3-27-12	DWG DATE: 4-20-12	GPS OPERATOR: DARREN VEAL
ECGS 31-7	DWG NO. 370-12	SHEET 1 OF 2