

# T6N, R66W, 6th P.M.

1998 3 1/4" Alum.  
Cap. in Monument Box  
0.5' Below Ground  
Lat: 40.494914°  
Long: 104.811531°

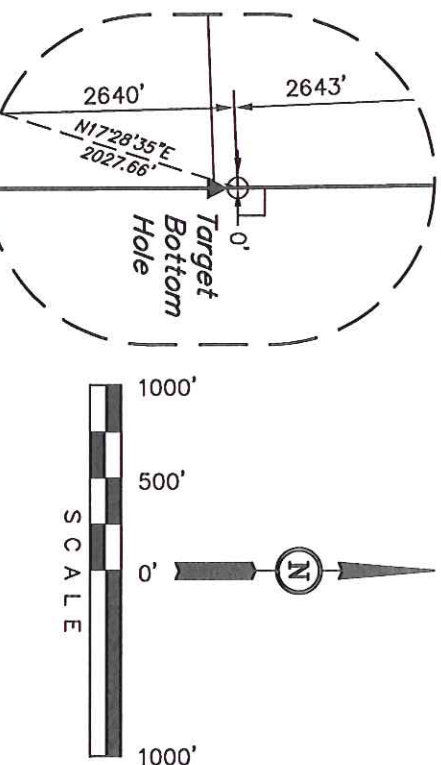
**GREAT WESTERN OIL & GAS COMPANY**  
Well location, FRITZLER #17-42-11, located as shown in the SE 1/4 SE 1/4 of Section 17, T6N, R66W, 6th P.M., Weld County, Colorado.

## BASIS OF ELEVATION

USGS COOPERATIVE BASE NETWORK CONTROL STATION, DESIGNATION 'VERMILYEA'. NGS DATA SHEET LISTS THE NAVD 88 ELEVATION AS BEING 5026 FEET

## BASIS OF BEARINGS

BASIS OF BEARINGS IS A G.P.S. OBSERVATION.



Scale: None

## CERTIFICATE

THIS IS TO CERTIFY THAT THE ABOVE PLATS WERE PREPARED FROM FIELD NOTES OF ACTUAL SURVEYS MADE BY ME OR UNDER MY SUPERVISION AND THAT THE SAME ARE TRUE AND CORRECT TO THE BEST OF MY KNOWLEDGE AND BELIEF.

REGISTERED LAND SURVEYOR  
REGISTRATION NO. 17442  
STATE OF COLORADO  
09-12-13

REV: 07-13-12 J.W.  
REVISED: 05-17-12

**UNTIAH ENGINEERING & LAND SURVEYING**  
86 SOUTH 200 EAST - VERNAL, UTAH 84078  
(435) 789-1017

SCALE 1" = 1000'  
DATE SURVEYED: 04-17-12 DATE DRAWN: 04-25-12

PARTY D.N. A.G. J.J. REFERENCES G.L.O. PLAT

WEATHER WARM FILE GREAT WESTERN OIL & GAS COMPANY

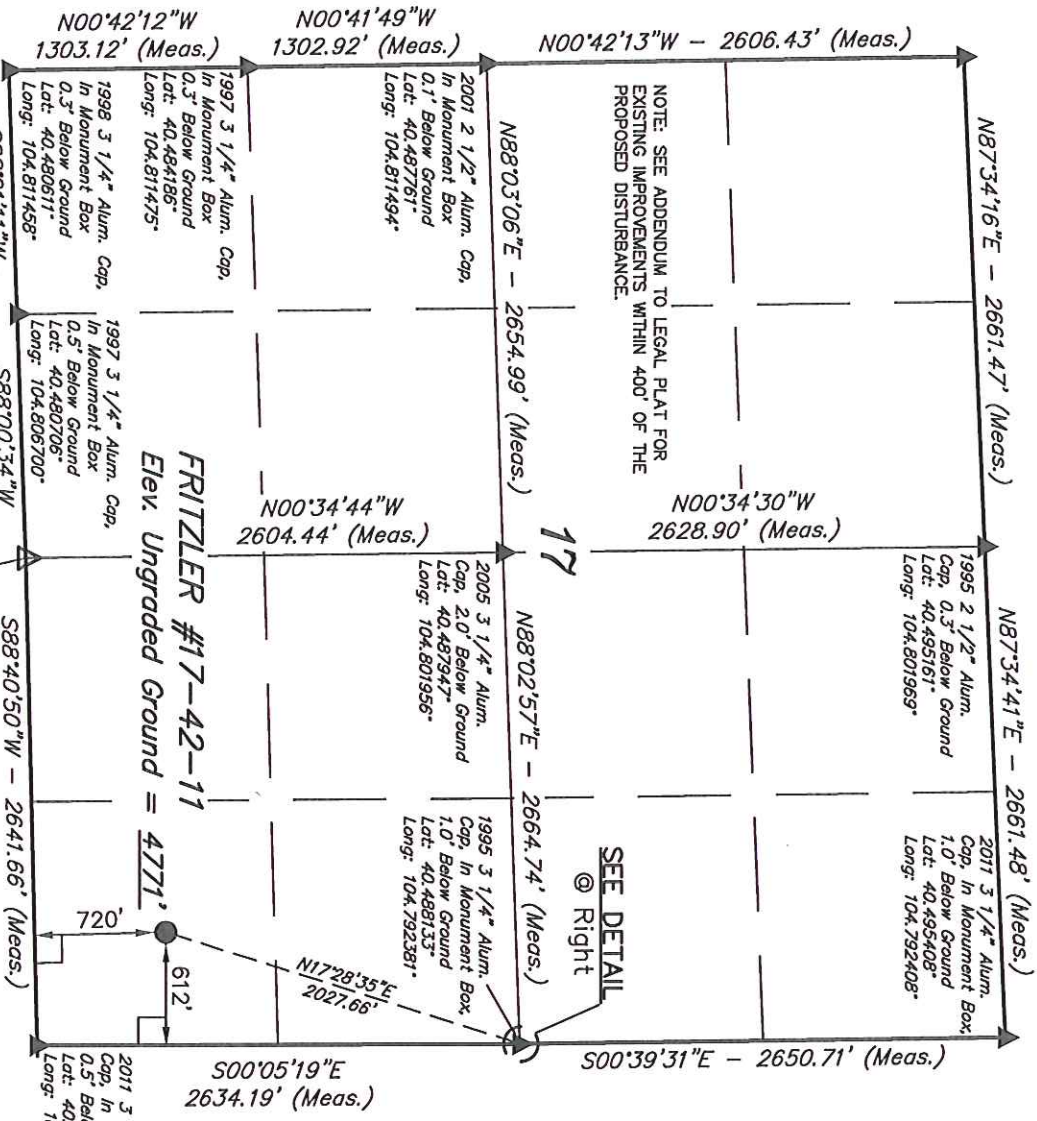
## LEGEND:

- = 90° SYMBOL
- = PROPOSED WELL HEAD.
- ▲ = SECTION CORNERS LOCATED.

NAD 83 (TARGET BOTTOM HOLE)	NAD 83 (SURFACE LOCATION)
LATITUDE = 40°29'17.35" (40.488153)	LATITUDE = 40°28'58.29" (40.482858)
LONGITUDE = 104°47'32.57" (104.792381)	LONGITUDE = 104°47'40.67" (104.794631)
NAD 27 (TARGET BOTTOM HOLE)	NAD 27 (SURFACE LOCATION)
LATITUDE = 40°29'17.42" (40.488172)	LATITUDE = 40°28'58.36" (40.482878)
LONGITUDE = 104°47'30.66" (104.791856)	LONGITUDE = 104°47'38.78" (104.794106)

Section Corner  
Re-Established by  
Reference Monument  
(Not Set on Ground)

PDOP = 1.0



NOTE: SEE ADDENDUM TO LEGAL PLAT FOR EXISTING IMPROVEMENTS WITHIN 400' OF THE PROPOSED DISTURBANCE.

SEE DETAIL  
@ Right