

PROPOSED WELLBORE SPACING UNIT

T6N, R66W, 6th P.M.

1998 3 1/4" Alum.
Cap. in Monument Box
0.5' Below Ground
Lat: 40.494914°
Long: 104.811531°

N87°34'16"E - 2661.47' (Meas.)

1995 2 1/2" Alum.
Cap. 0.5' Below Ground
Lat: 40.495161°
Long: 104.801969°

2011 3 1/4" Alum.
Cap. in Monument Box
1.0' Below Ground
Lat: 40.495408°
Long: 104.792408°

GREAT WESTERN OIL & GAS COMPANY
Well location, FRITZLER #17-42-11, located as shown in the SE 1/4 SE 1/4 of Section 17, T6N, R66W, 6th P.M., Weld County, Colorado.

BASIS OF ELEVATION

USGS COOPERATIVE BASE NETWORK CONTROL STATION, DESIGNATION 'VERMILYEA'. NGS DATA SHEET LISTS THE NAVD 88 ELEVATION AS BEING 5026 FEET

BASIS OF BEARINGS

BASIS OF BEARINGS IS A G.P.S. OBSERVATION.

NOTE: SEE ADDENDUM TO LEGAL PLAT FOR EXISTING IMPROVEMENTS WITHIN 400' OF THE PROPOSED DISTURBANCE.

N00°42'13"W - 2606.43' (Meas.)

N88°03'06"E - 2654.99' (Meas.)

2001 2 1/2" Alum. Cap.
In Monument Box
0.1' Below Ground
Lat: 40.487761°
Long: 104.811494°

N00°41'49"W
1302.92' (Meas.)

1997 3 1/4" Alum. Cap.
In Monument Box
0.3' Below Ground
Lat: 40.484186°
Long: 104.811475°

N00°42'12"W
1303.12' (Meas.)

1998 3 1/4" Alum. Cap.
In Monument Box
0.3' Below Ground
Lat: 40.480611°
Long: 104.811458°

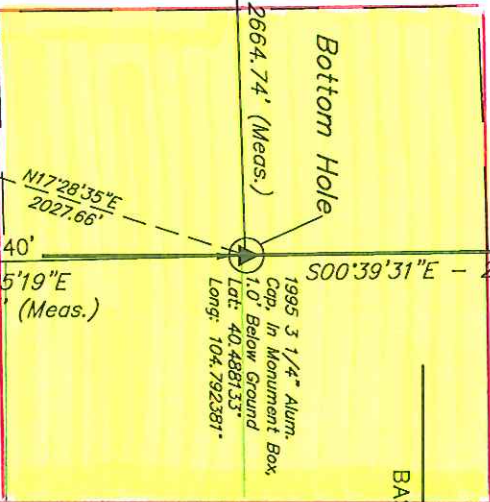
N00°34'44"W
2604.44' (Meas.)

2005 3 1/4" Alum. Cap. 2.0' Below Ground
Lat: 40.487947°
Long: 104.801956°

17

N88°02'57"E - 2664.74' (Meas.)

1995 3 1/4" Alum. Cap. in Monument Box
1.0' Below Ground
Lat: 40.488133°
Long: 104.792381°



FRITZLER #17-42-11
Elev. Ungraded Ground = 4771'

S88°01'11"W
1324.84' (Meas.)

S88°00'34"W
1324.68' (Meas.)

S88°40'50"W - 2641.66' (Meas.)

2011 3 1/4" Alum. Cap. in Monument Box
0.5' Below Ground
Lat: 40.480906°
Long: 104.792447°

Section Corner
Re-Established by
Reference Monument
(Not Set on Ground)

LEGEND:

— = 90° SYMBOL

● = PROPOSED WELL HEAD.

▲ = SECTION CORNERS LOCATED.

NAD 83 (TARGET BOTTOM HOLE)	NAD 83 (SURFACE LOCATION)
LATITUDE = 40.2917.35° (40.488153)	LATITUDE = 40.2858.29° (40.482858)
LONGITUDE = 104.4732.57° (104.792381)	LONGITUDE = 104.4740.67° (104.794633)
NAD 27 (TARGET BOTTOM HOLE)	NAD 27 (SURFACE LOCATION)
LATITUDE = 40.2917.42° (40.488172)	LATITUDE = 40.2858.36° (40.482878)
LONGITUDE = 104.4730.68° (104.791856)	LONGITUDE = 104.4738.78° (104.794106)

PDOP = 1.0

SCALE
1" = 1000'

UNTIAH ENGINEERING & LAND SURVEYING
85 SOUTH 200 EAST - VERNAL, UTAH 84078
(435) 789-1017

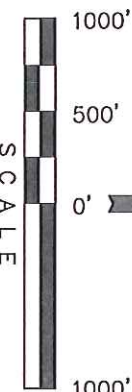
DATE SURVEYED: 04-17-12
DATE DRAWN: 04-25-12

PARTY
D.N. A.G. J.J.

REFERENCES
G.L.O. PLAT

WEATHER
WARM

FILE
GREAT WESTERN OIL & GAS COMPANY



CERTIFICATE

THIS IS TO CERTIFY THAT THE ABOVE PLAT WAS PREPARED FROM FIELD NOTES OF ACTUAL SURVEYS MADE BY ME OR UNDER MY SUPERVISION AND THAT THE SAME ARE TRUE AND CORRECT TO THE BEST OF MY KNOWLEDGE AND BELIEF.

REGISTERED LAND SURVEYOR
REGISTRATION NO. 17492
STATE OF COLORADO
05-21-12

REVISED: 05-17-12