

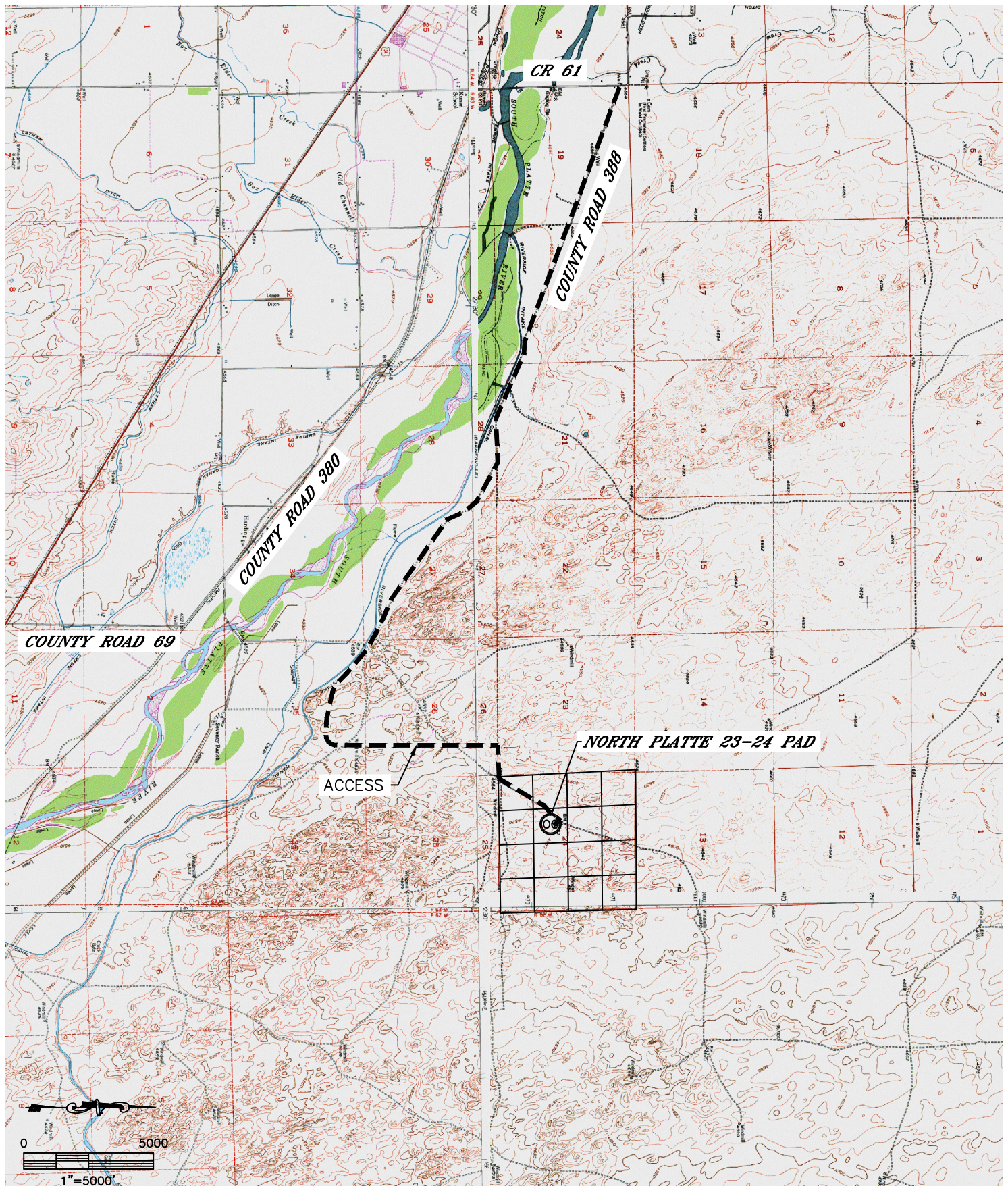


Lat40°, Inc. 1635 Foxtrail Drive, Suite 325 Loveland, CO 970-776-3321

# ACCESS ROAD MAP

NORTH PLATTE 23-24 PAD

SECTION: 24  
TOWNSHIP: 5N  
RANGE: 63W



DATE: 7/10/2012  
PROJECT#: 2012050