
MESA ENERGY PARTNERS LLC

**BDU 1-9-299
WILD CAT
Rio Blanco County , Colorado**

Cement Multiple Stages **23-Oct-2010**

Post Job Report

The Road to Excellence Starts with Safety

Sold To #: 358666	Ship To #: 2813563	Quote #:	Sales Order #: 7721904
Customer: MESA ENERGY PARTNERS LLC	Customer Rep: Chaney, Phil		
Well Name: BDU	Well #: 1-9-299	API/UWI #: 05-103-11769	
Field: WILD CAT	City (SAP): RANGELY	County/Parish: Rio Blanco	State: Colorado
Lat: N 39.905 deg. OR N 39 deg. 54 min. 19.494 secs.	Long: W 108.448 deg. OR W -109 deg. 33 min. 5.778 secs.		
Contractor: MESA ENERGY	Rig/Platform Name/Num: Frontier 2		
Job Purpose: Cement Multiple Stages			
Well Type: Development Well	Job Type: Cement Multiple Stages		
Sales Person: KOHL, KYLE	Srv Supervisor: STILLSON, ERIC	MBU ID Emp #: 393789	

Job Personnel

HES Emp Name	Exp Hrs	Emp #	HES Emp Name	Exp Hrs	Emp #	HES Emp Name	Exp Hrs	Emp #
ANDERSON, ADAM S	21	456683	BROWN, TRAVIS A	21	396848	LUNCEFORD, STEVEN John	21	457512
STILLSON, ERIC W	21	393789	WEAVER, CARLTON Russell	21	457698			

Equipment

HES Unit #	Distance-1 way	HES Unit #	Distance-1 way	HES Unit #	Distance-1 way	HES Unit #	Distance-1 way
10025041	110 mile	10053558	110 mile	10616651C	110 mile	10741119	110 mile
10783493	110 mile	10822007	110 mile	10995025	110 mile	11259882	110 mile
11381461	110 mile						

Job Hours

Date	On Location Hours	Operating Hours	Date	On Location Hours	Operating Hours	Date	On Location Hours	Operating Hours
10-22-10	17	3	10-23-10	4	1			

TOTAL Total is the sum of each column separately

Job

Formation Name	Top	Bottom	Called Out	Date	Time	Time Zone
Formation Depth (MD)			On Location	22 - Oct - 2010	06:30	MST
Form Type		BHST	Job Started	22 - Oct - 2010	09:45	MST
Job depth MD	1155. ft	Job Depth TVD	Job Completed	23 - Oct - 2010	01:57	MST
Water Depth		Wk Ht Above Floor	Departed Loc	23 - Oct - 2010	04:00	MST
Perforation Depth (MD)	From	To				

Well Data

Description	New / Used	Max pressure psig	Size in	ID in	Weight lbm/ft	Thread	Grade	Top MD ft	Bottom MD ft	Top TVD ft	Bottom TVD ft
Open Hole				12.25				2250.	3000.		
Open Hole				14.75				.	2250.		
Surface Casing	Unknown		9.625	8.921	36.			.	3000.		
2" Grout String	Unknown		2.	1.867				.	1155.		

Sales/Rental/3rd Party (HES)

Description	Qty	Qty uom	Depth	Supplier
R/A DENSOMETER W/CHART RECORDER, /JOB, ZI	1	JOB		
ADC (AUTO DENSITY CTRL) SYS, /JOB, ZI	1	JOB		
PORT. DATA ACQUIS. W/OPTICEM RT W/HES	1	EA		

Tools and Accessories													
Type	Size	Qty	Make	Depth	Type	Size	Qty	Make	Depth	Type	Size	Qty	Make
Guide Shoe					Packer					Top Plug			
Float Shoe					Bridge Plug					Bottom Plug			
Float Collar					Retainer					SSR plug set			
Insert Float										Plug Container			
Stage Tool										Centralizers			
Miscellaneous Materials													
Gelling Agt			Conc		Surfactant			Conc		Acid Type		Qty	Conc %
Treatment Fld			Conc		Inhibitor			Conc		Sand Type		Size	Qty
Fluid Data													
Stage/Plug #: 1													
Fluid #	Stage Type	Fluid Name				Qty	Qty uom	Mixing Density lbm/gal	Yield ft3/sk	Mix Fluid Gal/sk	Rate bbl/min	Total Mix Fluid Gal/sk	
1	Fresh Water					20	bbl	8.4	.0	.0	4.0		
2	Topout Cement	VARICEM (TM) CEMENT (452009)				450.0	sacks	12.5	2.0	10.72	4.0	10.72	
10.72 Gal		FRESH WATER											
Calculated Values				Pressures				Volumes					
Displacement				Shut In: Instant				Lost Returns		0	Cement Slurry		160
Top Of Cement		SURFACE		5 Min				Cement Returns		9	Actual Displacement		Treatment
Frac Gradient				15 Min				Spacers			Load and Breakdown		Total Job
Rates													
Circulating				Mixing		4		Displacement		4		Avg. Job	
Cement Left In Pipe		Amount		0		Reason							
Frac Ring # 1 @		ID		Frac ring # 2 @		ID		Frac Ring # 3 @		ID		Frac Ring # 4 @	
The Information Stated Herein Is Correct								Customer Representative Signature					

The Road to Excellence Starts with Safety

Sold To #: 358666	Ship To #: 2813563	Quote #:	Sales Order #: 7721904
Customer: MESA ENERGY PARTNERS LLC		Customer Rep: Chaney, Phil	
Well Name: BDU	Well #: 1-9-299	API/UWI #: 05-103-11769	
Field: WILD CAT	City (SAP): RANGELY	County/Parish: Rio Blanco	State: Colorado
Legal Description:			
Lat: N 39.905 deg. OR N 39 deg. 54 min. 19.494 secs.		Long: W 108.448 deg. OR W -109 deg. 33 min. 5.778 secs.	
Contractor: MESA ENERGY		Rig/Platform Name/Num: Frontier 2	
Job Purpose: Cement Multiple Stages			Ticket Amount:
Well Type: Development Well		Job Type: Cement Multiple Stages	
Sales Person: KOHL, KYLE		Srv Supervisor: STILLSON, ERIC	MBU ID Emp #: 393789

Activity Description	Date/Time	Cht #	Rate bbl/min	Volume bbl		Pressure psig		Comments
				Stage	Total	Tubing	Casing	
Call Out	10/22/2010 00:45							9 5/8 SURFACE CASING IN 14 3/4 HOLE TOPOUT, MESA ENERGY, FRONTIER 2, BDU 1-9-299.
Shutdown	10/22/2010 02:51							KNOCKED OFF HES LINE TO TUBING.
Pre-Convoy Safety Meeting	10/22/2010 03:00							ENTIRE CREW, OBSERVE ALL SAFE DRIVING PROCEDURES
Arrive At Loc	10/22/2010 06:30							ARRIVED EARLY. RIG RUNNING TUBING.
Assessment Of Location Safety Meeting	10/22/2010 06:45							REVIEWED EMERGENCY PLAN, ASSESSED WORK AREA AND SPOTTED EQUIPMENT.
Pre-Rig Up Safety Meeting	10/22/2010 07:25							ENTIRE CREW, WALKED THROUGH RIG UP LOOKING FOR HAZARDS.
Rig-Up Equipment	10/22/2010 07:30							1 PICK UP, 1 HT400 PUMP TRUCK, 2 660 BULK CEMENT TRUCKS,
Pre-Job Safety Meeting	10/22/2010 09:20							ENTIRE CREW, CO REP AND RIG CREW.
Start Job	10/22/2010 09:45							2" 5.95 LB/FT TUBING ID 1.867" SET TO 1155 IN ANNULUS OF 14 3/4 OPEN HOLE AND 9 5/8 36 # SURFACE CASING.

Activity Description	Date/Time	Cht #	Rate bbl/min	Volume bbl		Pressure psig		Comments
				Stage	Total	Tubing	Casing	
Pump Water	10/22/2010 09:46		2	2			149.0	FILL LINES WITH 2 BBLS WATER BEFORE TESTING.
Pressure Test	10/22/2010 09:48		0.5	0.1			5000.0	HELD PRESSURE FOR 2 MIN, PRESSURE HELD, NO LEAKS. AFTER TESTING LINES PREMIXED CEMENT TUB AND WEIGHED WITH SCALES.
Pump Spacer 1	10/22/2010 09:56		4	3			475.0	FRESH WATER
Pump Cement	10/22/2010 09:57		4	26			760.0	TOTAL OF 600 SKS VARICEM, 12.5 PPG, 2.0 CUFT/SK, 10.72 GAL/SK, USED APPROX 71 SKS ON FIRST TOPOOUT, APPROX 200 FT OF FILL.
Pump Displacement	10/22/2010 10:04		4	3			765.0	FRESH WATER, PUMP WATER BEHIND CEMENT TO CLEAR LINES AND BALANCE.
Shutdown	10/22/2010 10:05							KNOCKED OFF HES LINE TO TUBING.
Move Tubing Up	10/22/2010 10:07							RIG PULLED STANDS UP TO 847 FT, ALL PULLED DRY, RIG CIRCULATED TO ENSURE TUBING CLEAR WITH NO PROBLEMS
Standby - Other - see comments	10/22/2010 10:30							WAIT 4 HRS THEN RIG WILL RUN TUBING DOWN TO TAG TOP OF CEMENT BEFORE PUMPING NEXT TOPOUT.
Safety Meeting	10/22/2010 14:50							RIG TAGGED CEMENT AT 930 FT, PULLED UP 3 FT TO PUMP NEXT TOPOUT.
Pump Water	10/22/2010 15:18		2	2			147.0	FILL LINES WITH 2 BBLS WATER BEFORE TESTING.

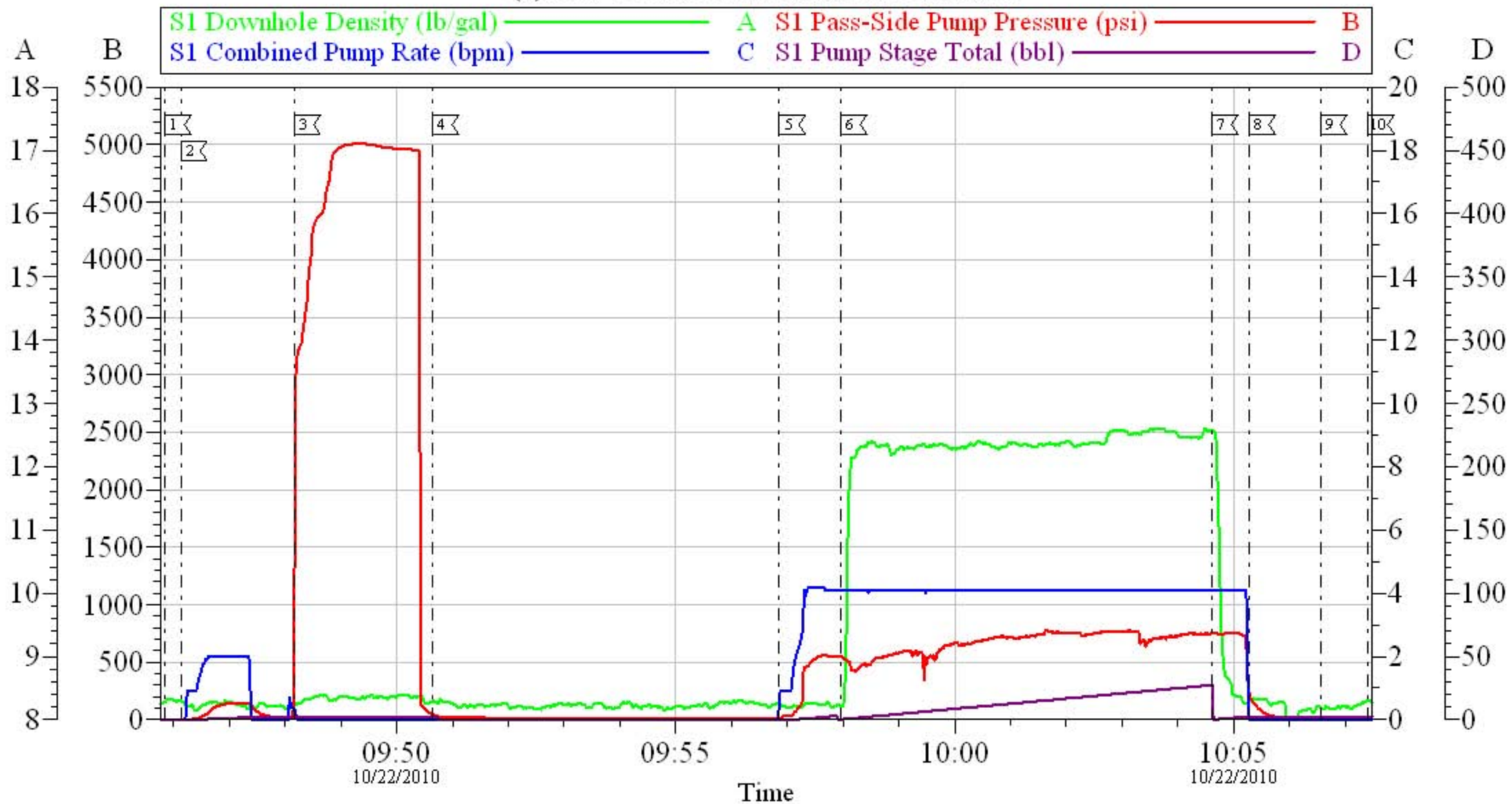
Activity Description	Date/Time	Cht #	Rate bbl/min	Volume bbl		Pressure psig		Comments
				Stage	Total	Tubing	Casing	
Pressure Test	10/22/2010 15:21		0.5	0.1			4740.0	HELD PRESSURE FOR 2 MIN, PRESSURE HELD, NO LEAKS. AFTER TESTING LINES PREMIXED CEMENT TUB AND WEIGHED WITH SCALES.
Pump Spacer 1	10/22/2010 15:28		4	3			415.0	FRESH WATER
Pump Cement	10/22/2010 15:30		4	47			650.0	APPROX 132 SKS VARICEM, 12.5 PPG, 2.0 CUFT/SK, 10.72 GAL/SK, APPROX 300 FT OF FILL.
Pump Displacement	10/22/2010 15:41		4	2.3			615.0	FRESH WATER, PUMP WATER BEHIND CEMENT TO CLEAR LINES AND BALANCE.
Shutdown	10/22/2010 15:42							KNOCKED OFF HES LINE TO TUBING.
Move Tubing Up	10/22/2010 15:43							RIG PULLED STANDS UP TO 535 FT, FIRST 2 PULLED WET, RIG CIRCULATED TO ENSURE TUBING CLEAR WITH NO PROBLEMS.
Standby - Other - see comments	10/22/2010 16:13							WAIT 4 HRS THEN RIG WILL RUN TUBING DOWN TO TAG TOP OF CEMENT BEFORE PUMPING NEXT TOPOUT.
Safety Meeting	10/22/2010 20:00							RIG TAGGED CEMENT AT 617 FT, PULLED UP TO 598 FT TO PUMP NEXT TOPOUT.
Pump Water	10/22/2010 20:29		2	3			112.0	FILL LINES WITH 3 BBLS WATER BEFORE TESTING.
Pressure Test	10/22/2010 20:32		0.5	0.1			4740.0	HELD PRESSURE FOR 2 MIN, PRESSURE HELD, NO LEAKS. AFTER TESTING LINES PREMIXED CEMENT TUB AND WEIGHED WITH SCALES.

Activity Description	Date/Time	Cht #	Rate bbl/min	Volume bbl		Pressure psig		Comments
				Stage	Total	Tubing	Casing	
Pump Spacer 1	10/22/2010 20:38		4	2			275.0	FRESH WATER
Pump Cement	10/22/2010 20:39		4	47			490.0	APPROX 132 SKS VARICEM, 12.5 PPG, 2.0 CUFT/SK, 10.72 GAL/SK, APPROX 300 FT OF FILL.
Pump Displacement	10/22/2010 20:51		4	1.5			470.0	FRESH WATER, PUMP WATER BEHIND CEMENT TO CLEAR LINES AND BALANCE.
Move Tubing Up	10/22/2010 20:52							RIG PULLED STANDS UP TO 191 FT, FIRST 2 PULLED WET, RIG CIRCULATED TO ENSURE TUBING CLEAR WITH NO PROBLEMS.
Standby - Other - see comments	10/22/2010 21:22							WAIT 4 HRS THEN RIG WILL RUN TUBING DOWN TO TAG TOP OF CEMENT BEFORE PUMPING NEXT TOPOUT.
Safety Meeting	10/23/2010 01:25							RIG TAGGED CEMENT AT 260 FT, PULLED UP TO 254 FT TO PUMP NEXT TOPOUT.
Pump Water	10/23/2010 01:35		2	2			50.0	FILL LINES WITH 2 BBLS WATER BEFORE TESTING.
Pressure Test	10/23/2010 01:37		0.5	0.1			5350.0	HELD PRESSURE FOR 2 MIN, PRESSURE HELD, NO LEAKS. AFTER TESTING LINES PREMIXED CEMENT TUB AND WEIGHED WITH SCALES.
Pump Spacer 1	10/23/2010 01:45		4	2			110.0	FRESH WATER

Activity Description	Date/Time	Cht #	Rate bbl/min	Volume bbl		Pressure psig		Comments
				Stage	Total	Tubing	Casing	
Pump Cement	10/23/2010 01:46		4	42			260.0	APPROX 118 SKS VARICEM, 12.5 PPG, 2.0 CUFT/SK, 10.72 GAL/SK, CEMENT TO SURFACE AT 31 BBLS GONE, 9 BBLS CEMENT TO SURFACE, USED 20 LBS SUGAR.
Pump Displacement	10/23/2010 01:56		4	1			250.0	FRESH WATER, PUMP WATER BEHIND CEMENT TO CLEAR LINES.
Shutdown	10/23/2010 01:57							USED APPROX 450 SKS CEMENT TOTAL, 150 SKS WILL BE RETURNED.
Move Tubing Up	10/23/2010 01:59							RIG PULLED ALL TUBING OUT OF HOLE, TUBING CLEAR.
Other	10/23/2010 02:30							AFTER WAITING 1/2 HOUR CEMENT DID NOT FALL BACK, FINISH CLEAN UP AND RIG DOWN.
Pre-Rig Down Safety Meeting	10/23/2010 02:45							ENTIRE CREW
Rig-Down Equipment	10/23/2010 03:00							
Pre-Convoy Safety Meeting	10/23/2010 03:55							ENTIRE CREW
Crew Leave Location	10/23/2010 04:00							THANK YOU FOR USING HALLIBURTON, ERIC STILLSON AND CREW.

MESA ENERGY

(1) TOPOUT 9 5/8 SURFACE CASING



Local Event Log			
1	START JOB	09:45:51	2
2	FILL LINES	09:46:08	3
3	TEST LINES	09:48:09	4
4	MIX CEMENT	09:50:38	5
5	PUMP H2O SPACER	09:56:52	6
6	PUMP CEMENT	09:57:57	7
7	PUMP DISPLACEMENT	10:04:37	8
8	SHUTDOWN	10:05:17	9
9	RIG POOH	10:06:34	10
10	WAIT TO TOP OUT	10:07:25	

Customer: MESA ENERGY
 Well Description: BDU 1-9-299
 Company Rep: PHIL CHANEY

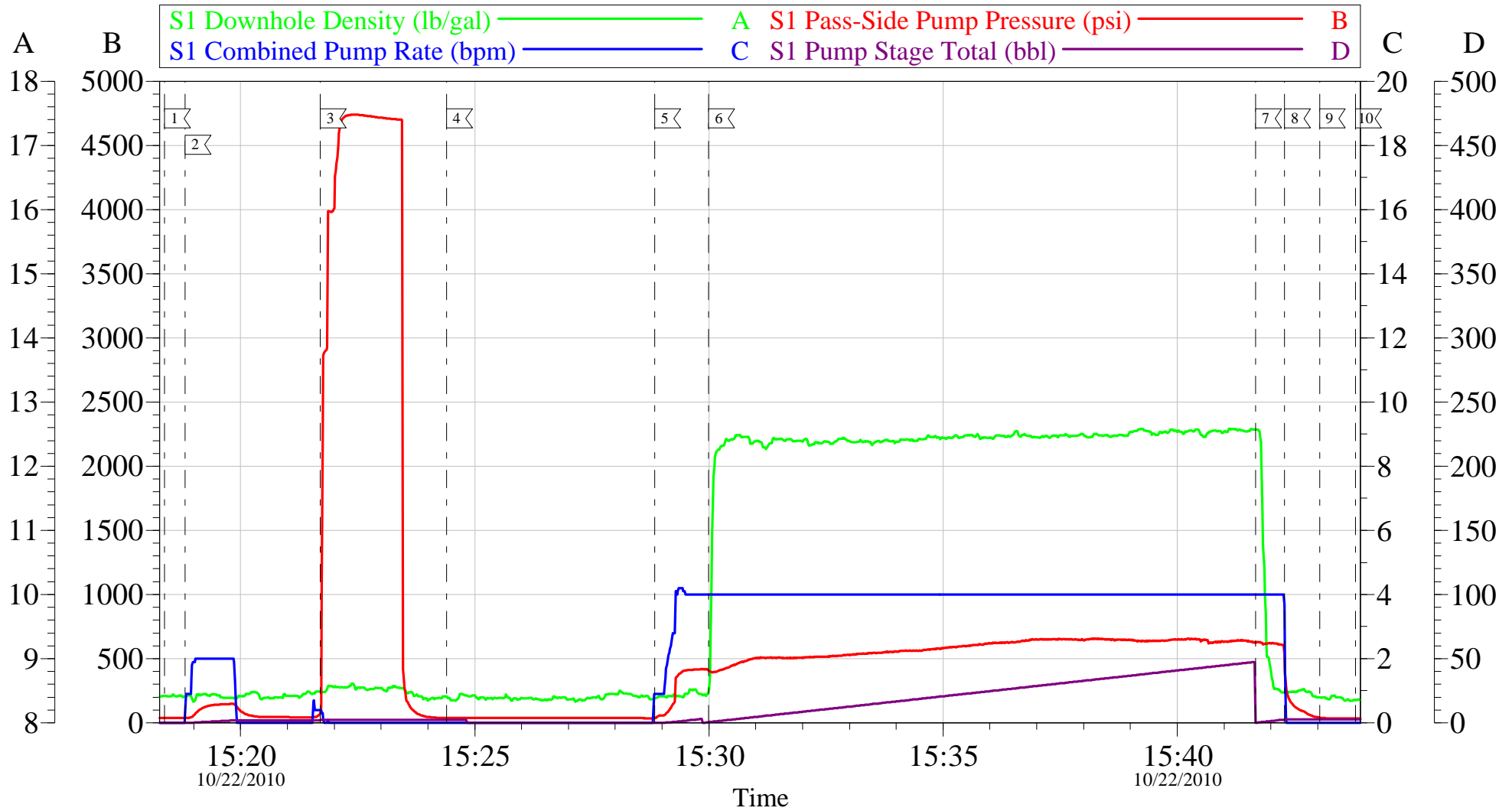
Job Date: 22-Oct-2010
 Job Type: TOPOUT
 Cement Supervisor: ERIC STILLSON

Sales Order #: 7721904
 ADC Used: YES
 Elite #: 4 RUSTY WEAVER

OptiCern v6.4.2
 22-Oct-10 10:59

MESA ENERGY

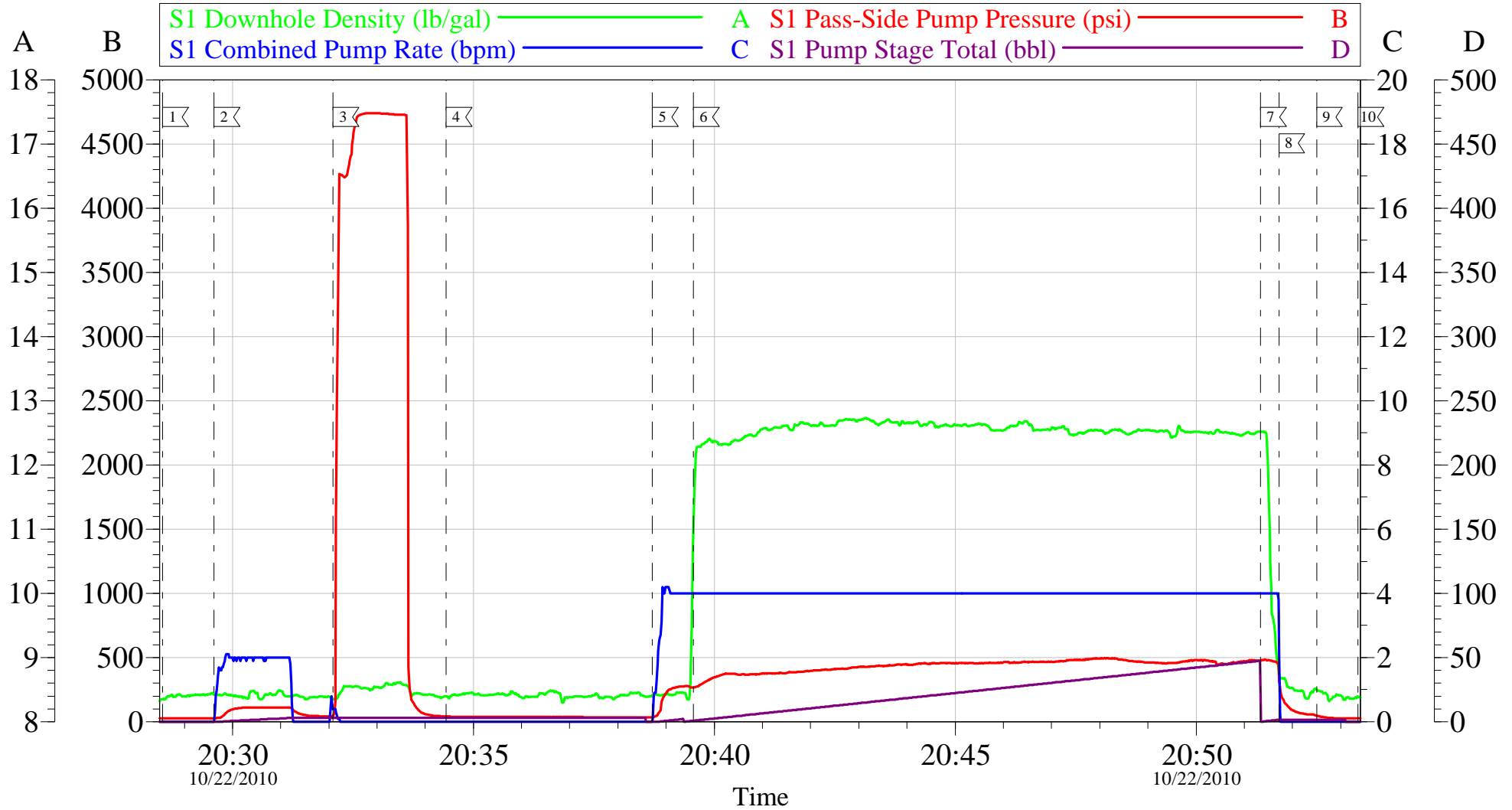
(2) TOPOUT 9 5/8 SURFACE CASING



Customer: MESA ENERGY	Job Date: 22-Oct-2010	Sales Order #: 7721904
Well Description: BDU 1-9-299	Job Type: TOPOUT	ADC Used: YES
Company Rep: PHIL CHANEY	Cement Supervisor: ERIC STILLSON	Elite #: 4 RUSTY WEAVER

MESA ENERGY

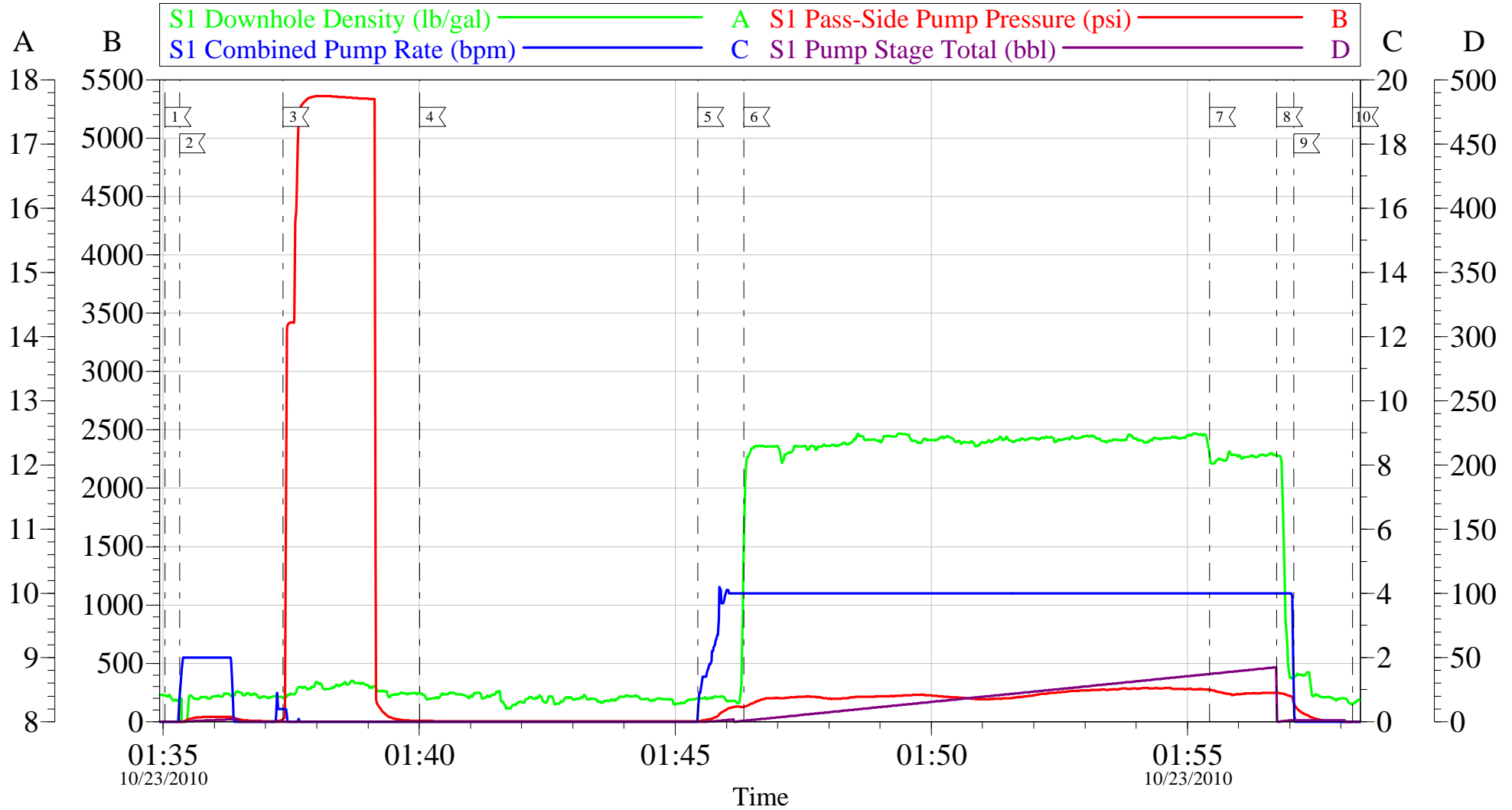
(3) TOPOUT 9 5/8 SURFACE CASING



Customer: MESA ENERGY	Job Date: 22-Oct-2010	Sales Order #: 7721904
Well Description: BDU 1-9-299	Job Type: TOPOUT	ADC Used: YES
Company Rep: PHIL CHANEY	Cement Supervisor: ERIC STILLSON	Elite #: 4 RUSTY WEAVER

MESA ENERGY

(4) TOPOUT 9 5/8 SURFACE CASING



Customer: MESA ENERGY	Job Date: 23-Oct-2010	Sales Order #: 7721904
Well Description: BDU 1-9-299	Job Type: TOPOUT	ADC Used: YES
Company Rep: PHIL CHANEY	Cement Supervisor: ERIC STILLSON	Elite #: 4 RUSTY WEAVER