
MESA ENERGY PARTNERS LLC

**BDU 1-9-299
WILD CAT
Rio Blanco County , Colorado**

**Cement Multiple Stages
23-Oct-2010**

Post Job Report

The Road to Excellence Starts with Safety

| | | | |
|--|---|----------------------------|------------------------|
| Sold To #: 358666 | Ship To #: 2813563 | Quote #: | Sales Order #: 7721904 |
| Customer: MESA ENERGY PARTNERS LLC | | Customer Rep: Chaney, Phil | |
| Well Name: BDU | Well #: 1-9-299 | API/UWI #: 05-103-11769 | |
| Field: WILD CAT | City (SAP): RANGELY | County/Parish: Rio Blanco | State: Colorado |
| Lat: N 39.905 deg. OR N 39 deg. 54 min. 19.494 secs. | Long: W 108.448 deg. OR W -109 deg. 33 min. 5.778 secs. | | |
| Contractor: MESA ENERGY | Rig/Platform Name/Num: Frontier 2 | | |
| Job Purpose: Cement Multiple Stages | | | |
| Well Type: Development Well | Job Type: Cement Multiple Stages | | |
| Sales Person: KOHL, KYLE | Srvc Supervisor: STILLSON, ERIC | MBU ID Emp #: 393789 | |

Job Personnel

| HES Emp Name | Exp Hrs | Emp # | HES Emp Name | Exp Hrs | Emp # | HES Emp Name | Exp Hrs | Emp # |
|------------------|---------|--------|-------------------------|---------|--------|------------------------|---------|--------|
| ANDERSON, ADAM S | 21 | 456683 | BROWN, TRAVIS A | 21 | 396848 | LUNCEFORD, STEVEN John | 21 | 457512 |
| STILLSON, ERIC W | 21 | 393789 | WEAVER, CARLTON Russell | 21 | 457698 | | | |

Equipment

| HES Unit # | Distance-1 way | HES Unit # | Distance-1 way | HES Unit # | Distance-1 way | HES Unit # | Distance-1 way |
|------------|----------------|------------|----------------|------------|----------------|------------|----------------|
| 10025041 | 110 mile | 10053558 | 110 mile | 10616651C | 110 mile | 10741119 | 110 mile |
| 10783493 | 110 mile | 10822007 | 110 mile | 10995025 | 110 mile | 11259882 | 110 mile |
| 11381461 | 110 mile | | | | | | |

Job Hours

| Date | On Location Hours | Operating Hours | Date | On Location Hours | Operating Hours | Date | On Location Hours | Operating Hours |
|----------|-------------------|-----------------|----------|-------------------|-----------------|------|-------------------|-----------------|
| 10-22-10 | 17 | 3 | 10-23-10 | 4 | 1 | | | |

TOTAL Total is the sum of each column separately

Job

| Formation Name | Top | Bottom | Called Out | Date | Time | Time Zone |
|------------------------|----------|-------------------|---------------|-----------------|-------|-----------|
| Formation Depth (MD) | | | On Location | 22 - Oct - 2010 | 06:30 | MST |
| Form Type | | BHST | Job Started | 22 - Oct - 2010 | 09:45 | MST |
| Job depth MD | 1155. ft | Job Depth TVD | Job Completed | 23 - Oct - 2010 | 01:57 | MST |
| Water Depth | | Wk Ht Above Floor | Departed Loc | 23 - Oct - 2010 | 04:00 | MST |
| Perforation Depth (MD) | From | To | | | | |

Well Data

| Description | New / Used | Max pressure psig | Size in | ID in | Weight lbm/ft | Thread | Grade | Top MD ft | Bottom MD ft | Top TVD ft | Bottom TVD ft |
|-----------------|------------|-------------------|---------|-------|---------------|--------|-------|-----------|--------------|------------|---------------|
| Open Hole | | | | 12.25 | | | | 2250. | 3000. | | |
| Open Hole | | | | 14.75 | | | | . | 2250. | | |
| Surface Casing | Unknown | | 9.625 | 8.921 | 36. | | | . | 3000. | | |
| 2" Grout String | Unknown | | 2. | 1.867 | | | | . | 1155. | | |

Sales/Rental/3rd Party (HES)

| Description | Qty | Qty uom | Depth | Supplier |
|---|-----|---------|-------|----------|
| R/A DENSOMETER W/CHART RECORDER,/JOB,ZI | 1 | JOB | | |
| ADC (AUTO DENSITY CTRL) SYS, /JOB,ZI | 1 | JOB | | |
| PORT. DATA ACQUIS. W/OPTICEM RT W/HES | 1 | EA | | |

| Tools and Accessories | | | | | | | | | | | | | |
|--|---------------|------------------------------|------|------------------|-------------|--------|---------|-----------------------------------|--------------|------------------|---------------------|------------------------|-----------|
| Type | Size | Qty | Make | Depth | Type | Size | Qty | Make | Depth | Type | Size | Qty | Make |
| Guide Shoe | | | | | Packer | | | | | Top Plug | | | |
| Float Shoe | | | | | Bridge Plug | | | | | Bottom Plug | | | |
| Float Collar | | | | | Retainer | | | | | SSR plug set | | | |
| Insert Float | | | | | | | | | | Plug Container | | | |
| Stage Tool | | | | | | | | | | Centralizers | | | |
| Miscellaneous Materials | | | | | | | | | | | | | |
| Gelling Agt | | | Conc | | Surfactant | | | Conc | | Acid Type | | Qty | Conc % |
| Treatment Fld | | | Conc | | Inhibitor | | | Conc | | Sand Type | | Size | Qty |
| Fluid Data | | | | | | | | | | | | | |
| Stage/Plug #: 1 | | | | | | | | | | | | | |
| Fluid # | Stage Type | Fluid Name | | | | Qty | Qty uom | Mixing Density lbm/gal | Yield ft3/sk | Mix Fluid Gal/sk | Rate bbl/min | Total Mix Fluid Gal/sk | |
| 1 | Fresh Water | | | | | 20 | bbl | 8.4 | .0 | .0 | 4.0 | | |
| 2 | Topout Cement | VARICEM (TM) CEMENT (452009) | | | | 450.0 | sacks | 12.5 | 2.0 | 10.72 | 4.0 | 10.72 | |
| 10.72 Gal | | FRESH WATER | | | | | | | | | | | |
| Calculated Values | | | | Pressures | | | | Volumes | | | | | |
| Displacement | | | | Shut In: Instant | | | | Lost Returns | | 0 | Cement Slurry | | 160 |
| Top Of Cement | | SURFACE | | 5 Min | | | | Cement Returns | | 9 | Actual Displacement | | Treatment |
| Frac Gradient | | | | 15 Min | | | | Spacers | | | Load and Breakdown | | Total Job |
| Rates | | | | | | | | | | | | | |
| Circulating | | | | Mixing | | 4 | | Displacement | | 4 | | Avg. Job | |
| Cement Left In Pipe | | Amount | | 0 | | Reason | | | | | | | |
| Frac Ring # 1 @ | | ID | | Frac ring # 2 @ | | ID | | Frac Ring # 3 @ | | ID | | Frac Ring # 4 @ ID | |
| The Information Stated Herein Is Correct | | | | | | | | Customer Representative Signature | | | | | |

The Road to Excellence Starts with Safety

| | | | |
|---|----------------------------|--|-------------------------------|
| Sold To #: 358666 | Ship To #: 2813563 | Quote #: | Sales Order #: 7721904 |
| Customer: MESA ENERGY PARTNERS LLC | | Customer Rep: Chaney, Phil | |
| Well Name: BDU | Well #: 1-9-299 | API/UWI #: 05-103-11769 | |
| Field: WILD CAT | City (SAP): RANGELY | County/Parish: Rio Blanco | State: Colorado |
| Legal Description: | | | |
| Lat: N 39.905 deg. OR N 39 deg. 54 min. 19.494 secs. | | Long: W 108.448 deg. OR W -109 deg. 33 min. 5.778 secs. | |
| Contractor: MESA ENERGY | | Rig/Platform Name/Num: Frontier 2 | |
| Job Purpose: Cement Multiple Stages | | | Ticket Amount: |
| Well Type: Development Well | | Job Type: Cement Multiple Stages | |
| Sales Person: KOHL, KYLE | | Srv Supervisor: STILLSON, ERIC | MBU ID Emp #: 393789 |

| Activity Description | Date/Time | Cht # | Rate bbl/min | Volume bbl | | Pressure psig | | Comments |
|---------------------------------------|------------------|-------|--------------|------------|-------|---------------|--------|--|
| | | | | Stage | Total | Tubing | Casing | |
| Call Out | 10/22/2010 00:45 | | | | | | | 9 5/8 SURFACE CASING IN 14 3/4 HOLE TOPOUT, MESA ENERGY, FRONTIER 2, BDU 1-9-299. |
| Shutdown | 10/22/2010 02:51 | | | | | | | KNOCKED OFF HES LINE TO TUBING. |
| Pre-Convoy Safety Meeting | 10/22/2010 03:00 | | | | | | | ENTIRE CREW, OBSERVE ALL SAFE DRIVING PROCEDURES |
| Arrive At Loc | 10/22/2010 06:30 | | | | | | | ARRIVED EARLY. RIG RUNNING TUBING. |
| Assessment Of Location Safety Meeting | 10/22/2010 06:45 | | | | | | | REVIEWED EMERGENCY PLAN, ASSESSED WORK AREA AND SPOTTED EQUIPMENT. |
| Pre-Rig Up Safety Meeting | 10/22/2010 07:25 | | | | | | | ENTIRE CREW, WALKED THROUGH RIG UP LOOKING FOR HAZARDS. |
| Rig-Up Equipment | 10/22/2010 07:30 | | | | | | | 1 PICK UP, 1 HT400 PUMP TRUCK, 2 660 BULK CEMENT TRUCKS, |
| Pre-Job Safety Meeting | 10/22/2010 09:20 | | | | | | | ENTIRE CREW, CO REP AND RIG CREW. |
| Start Job | 10/22/2010 09:45 | | | | | | | 2" 5.95 LB/FT TUBING ID 1.867" SET TO 1155 IN ANNULUS OF 14 3/4 OPEN HOLE AND 9 5/8 36 # SURFACE CASING. |

| Activity Description | Date/Time | Cht # | Rate bbl/min | Volume bbl | | Pressure psig | | Comments |
|--------------------------------|------------------|-------|--------------|------------|-------|---------------|--------|--|
| | | | | Stage | Total | Tubing | Casing | |
| Pump Water | 10/22/2010 09:46 | | 2 | 2 | | | 149.0 | FILL LINES WITH 2 BBLS WATER BEFORE TESTING. |
| Pressure Test | 10/22/2010 09:48 | | 0.5 | 0.1 | | | 5000.0 | HELD PRESSURE FOR 2 MIN, PRESSURE HELD, NO LEAKS. AFTER TESTING LINES PREMIXED CEMENT TUB AND WEIGHED WITH SCALES. |
| Pump Spacer 1 | 10/22/2010 09:56 | | 4 | 3 | | | 475.0 | FRESH WATER |
| Pump Cement | 10/22/2010 09:57 | | 4 | 26 | | | 760.0 | TOTAL OF 600 SKS VARICEM, 12.5 PPG, 2.0 CUFT/SK, 10.72 GAL/SK, USED APPROX 71 SKS ON FIRST TOPOOUT, APPROX 200 FT OF FILL. |
| Pump Displacement | 10/22/2010 10:04 | | 4 | 3 | | | 765.0 | FRESH WATER, PUMP WATER BEHIND CEMENT TO CLEAR LINES AND BALANCE. |
| Shutdown | 10/22/2010 10:05 | | | | | | | KNOCKED OFF HES LINE TO TUBING. |
| Move Tubing Up | 10/22/2010 10:07 | | | | | | | RIG PULLED STANDS UP TO 847 FT, ALL PULLED DRY, RIG CIRCULATED TO ENSURE TUBING CLEAR WITH NO PROBLEMS |
| Standby - Other - see comments | 10/22/2010 10:30 | | | | | | | WAIT 4 HRS THEN RIG WILL RUN TUBING DOWN TO TAG TOP OF CEMENT BEFORE PUMPING NEXT TOPOUT. |
| Safety Meeting | 10/22/2010 14:50 | | | | | | | RIG TAGGED CEMENT AT 930 FT, PULLED UP 3 FT TO PUMP NEXT TOPOUT. |
| Pump Water | 10/22/2010 15:18 | | 2 | 2 | | | 147.0 | FILL LINES WITH 2 BBLS WATER BEFORE TESTING. |

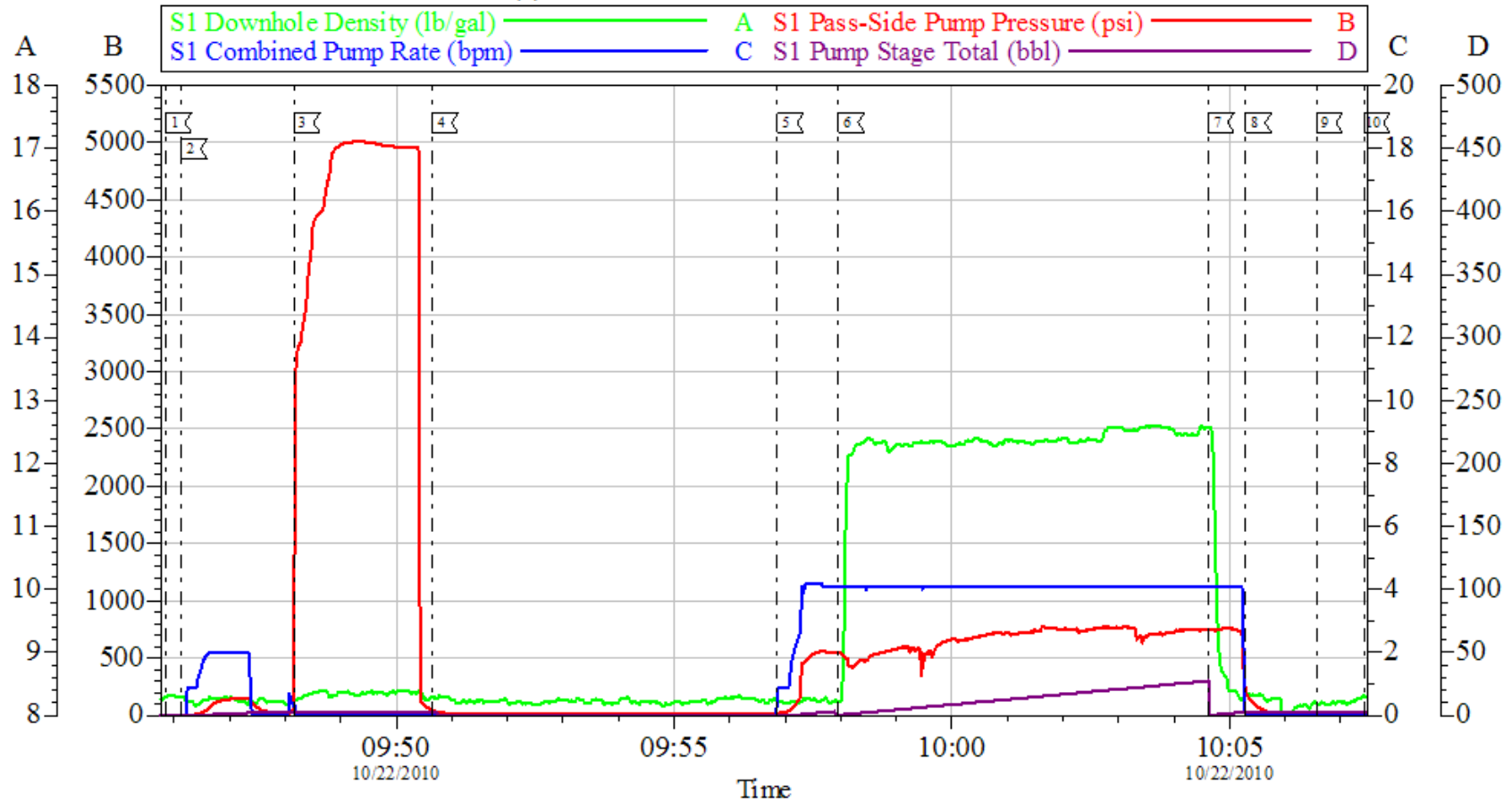
| Activity Description | Date/Time | Cht # | Rate bbl/min | Volume bbl | | Pressure psig | | Comments |
|--------------------------------|------------------|-------|--------------|------------|-------|---------------|--------|--|
| | | | | Stage | Total | Tubing | Casing | |
| Pressure Test | 10/22/2010 15:21 | | 0.5 | 0.1 | | | 4740.0 | HELD PRESSURE FOR 2 MIN, PRESSURE HELD, NO LEAKS. AFTER TESTING LINES PREMIXED CEMENT TUB AND WEIGHED WITH SCALES. |
| Pump Spacer 1 | 10/22/2010 15:28 | | 4 | 3 | | | 415.0 | FRESH WATER |
| Pump Cement | 10/22/2010 15:30 | | 4 | 47 | | | 650.0 | APPROX 132 SKS VARICEM, 12.5 PPG, 2.0 CUFT/SK, 10.72 GAL/SK, APPROX 300 FT OF FILL. |
| Pump Displacement | 10/22/2010 15:41 | | 4 | 2.3 | | | 615.0 | FRESH WATER, PUMP WATER BEHIND CEMENT TO CLEAR LINES AND BALANCE. |
| Shutdown | 10/22/2010 15:42 | | | | | | | KNOCKED OFF HES LINE TO TUBING. |
| Move Tubing Up | 10/22/2010 15:43 | | | | | | | RIG PULLED STANDS UP TO 535 FT, FIRST 2 PULLED WET, RIG CIRCULATED TO ENSURE TUBING CLEAR WITH NO PROBLEMS. |
| Standby - Other - see comments | 10/22/2010 16:13 | | | | | | | WAIT 4 HRS THEN RIG WILL RUN TUBING DOWN TO TAG TOP OF CEMENT BEFORE PUMPING NEXT TOPOUT. |
| Safety Meeting | 10/22/2010 20:00 | | | | | | | RIG TAGGED CEMENT AT 617 FT, PULLED UP TO 598 FT TO PUMP NEXT TOPOUT. |
| Pump Water | 10/22/2010 20:29 | | 2 | 3 | | | 112.0 | FILL LINES WITH 3 BBLS WATER BEFORE TESTING. |
| Pressure Test | 10/22/2010 20:32 | | 0.5 | 0.1 | | | 4740.0 | HELD PRESSURE FOR 2 MIN, PRESSURE HELD, NO LEAKS. AFTER TESTING LINES PREMIXED CEMENT TUB AND WEIGHED WITH SCALES. |

| Activity Description | Date/Time | Cht # | Rate bbl/ min | Volume bbl | | Pressure psig | | Comments |
|-----------------------------------|---------------------|----------|---------------------|---------------|-------|------------------|------------|--|
| | | | | Stage | Total | Tubing | Casing | |
| Pump Spacer 1 | 10/22/2010 20:38 | | 4 | 2 | | | 275.0 | FRESH WATER |
| Pump Cement | 10/22/2010 20:39 | | 4 | 47 | | | 490.0 | APPROX 132 SKS VARICEM, 12.5 PPG, 2.0 CUFT/SK, 10.72 GAL/SK, APPROX 300 FT OF FILL. |
| Pump Displacement | 10/22/2010 20:51 | | 4 | 1.5 | | | 470.0 | FRESH WATER, PUMP WATER BEHIND CEMENT TO CLEAR LINES AND BALANCE. |
| Move Tubing Up | 10/22/2010 20:52 | | | | | | | RIG PULLED STANDS UP TO 191 FT, FIRST 2 PULLED WET, RIG CIRCULATED TO ENSURE TUBING CLEAR WITH NO PROBLEMS. |
| Standby - Other - see comments | 10/22/2010 21:22 | | | | | | | WAIT 4 HRS THEN RIG WILL RUN TUBING DOWN TO TAG TOP OF CEMENT BEFORE PUMPING NEXT TOPOUT. |
| Safety Meeting | 10/23/2010 01:25 | | | | | | | RIG TAGGED CEMENT AT 260 FT, PULLED UP TO 254 FT TO PUMP NEXT TOPOUT. |
| Pump Water | 10/23/2010 01:35 | | 2 | 2 | | | 50.0 | FILL LINES WITH 2 BBLs WATER BEFORE TESTING. |
| Pressure Test | 10/23/2010 01:37 | | 0.5 | 0.1 | | | 5350. 0 | HELD PRESSURE FOR 2 MIN, PRESSURE HELD, NO LEAKS. AFTER TESTING LINES PREMIXED CEMENT TUB AND WEIGHED WITH SCALES. |
| Pump Spacer 1 | 10/23/2010 01:45 | | 4 | 2 | | | 110.0 | FRESH WATER |

| Activity Description | Date/Time | Cht # | Rate bbl/ min | Volume bbl | | Pressure psig | | Comments |
|-----------------------------|---------------------|----------|---------------------|---------------|-------|------------------|--------|--|
| | | | | Stage | Total | Tubing | Casing | |
| Pump Cement | 10/23/2010 01:46 | | 4 | 42 | | | 260.0 | APPROX 118 SKS VARICEM, 12.5 PPG, 2.0 CUFT/SK, 10.72 GAL/SK, CEMENT TO SURFACE AT 31 BBLS GONE, 9 BBLS CEMENT TO SURFACE, USED 20 LBS SUGAR. |
| Pump Displacement | 10/23/2010 01:56 | | 4 | 1 | | | 250.0 | FRESH WATER, PUMP WATER BEHIND CEMENT TO CLEAR LINES. |
| Shutdown | 10/23/2010 01:57 | | | | | | | USED APPROX 450 SKS CEMENT TOTAL, 150 SKS WILL BE RETURNED. |
| Move Tubing Up | 10/23/2010 01:59 | | | | | | | RIG PULLED ALL TUBING OUT OF HOLE, TUBING CLEAR. |
| Other | 10/23/2010 02:30 | | | | | | | AFTER WAITING 1/2 HOUR CEMENT DID NOT FALL BACK, FINISH CLEAN UP AND RIG DOWN. |
| Pre-Rig Down Safety Meeting | 10/23/2010 02:45 | | | | | | | ENTIRE CREW |
| Rig-Down Equipment | 10/23/2010 03:00 | | | | | | | |
| Pre-Convoy Safety Meeting | 10/23/2010 03:55 | | | | | | | ENTIRE CREW |
| Crew Leave Location | 10/23/2010 04:00 | | | | | | | THANK YOU FOR USING HALLIBURTON, ERIC STILLSON AND CREW. |

MESA ENERGY

(1) TOPOUT 9 5/8 SURFACE CASING

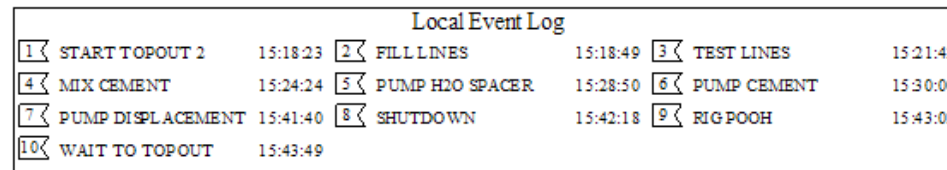


| Local Event Log | | | |
|-----------------|-------------------|----------|----|
| 1 | START JOB | 09:45:51 | 2 |
| 2 | FILL LINES | 09:46:08 | 3 |
| 3 | TEST LINES | 09:48:09 | 4 |
| 4 | MIX CEMENT | 09:50:38 | 5 |
| 5 | PUMP H2O SPACER | 09:56:52 | 6 |
| 6 | PUMP CEMENT | 09:57:57 | 7 |
| 7 | PUMP DISPLACEMENT | 10:04:37 | 8 |
| 8 | SHUTDOWN | 10:05:17 | 9 |
| 9 | RIG POOH | 10:06:34 | 10 |
| 10 | WAIT TO TOP OUT | 10:07:25 | |

| | | |
|-------------------------------|----------------------------------|-------------------------|
| Customer: MESA ENERGY | Job Date: 22-Oct-2010 | Sales Order #: 7721904 |
| Well Description: BDU 1-9-299 | Job Type: TOPOUT | ADC Used: YES |
| Company Rep: PHIL CHANEY | Cement Supervisor: ERIC STILLSON | Elite #: 4 RUSTY WEAVER |

OptiCem v6.4.2
22-Oct-10 10:59

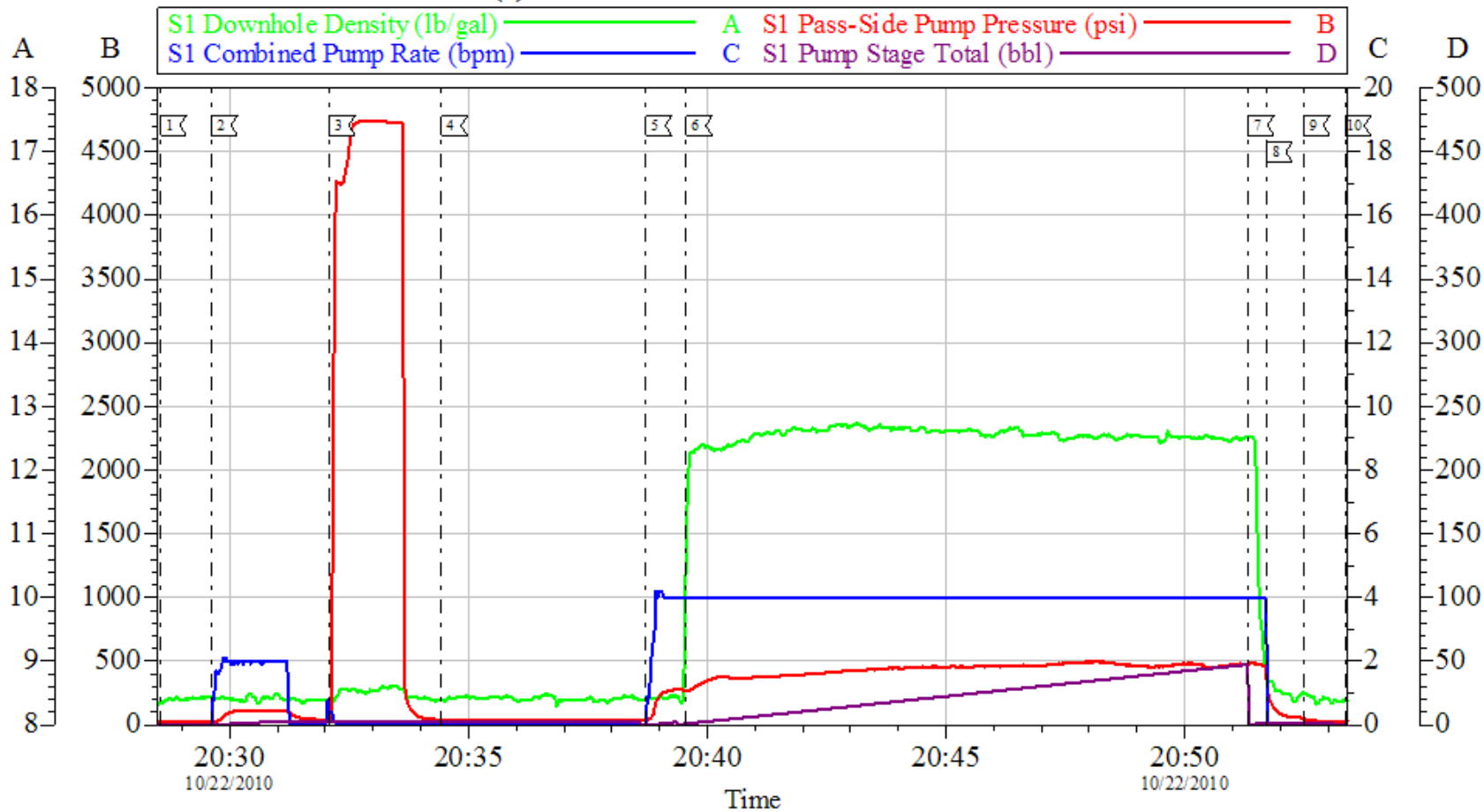
| | | | |
|------------------------------|---|----------------------------------|---|
| S1 Downhole Density (lb/gal) | A | S1 Pass-Side Pump Pressure (psi) | B |
| S1 Combined Pump Rate (bpm) | C | S1 Pump Stage Total (bbl) | D |



OptiCem v6.4.2
22-Oct-10 16:37

MESA ENERGY

(3) TOPOUT 9 5/8 SURFACE CASING



| Local Event Log | | | |
|-----------------|-------------------|----------|----|
| 1 | START TOPOUT 3 | 20:28:33 | 2 |
| 2 | FILL LINES | 20:29:37 | 3 |
| 3 | TEST LINES | 20:32:05 | 4 |
| 4 | MIX CEMENT | 20:34:26 | 5 |
| 5 | PUMP H2O SPACER | 20:38:43 | 6 |
| 6 | PUMP CEMENT | 20:39:34 | 7 |
| 7 | PUMP DISPLACEMENT | 20:51:20 | 8 |
| 8 | SHUTDOWN | 20:51:43 | 9 |
| 9 | RIG POOH | 20:52:30 | 10 |
| 10 | WAIT TO TOPOUT | 20:53:22 | |

Customer: MESA ENERGY
Well Description: BDU 1-9-299
Company Rep: PHIL CHANEY

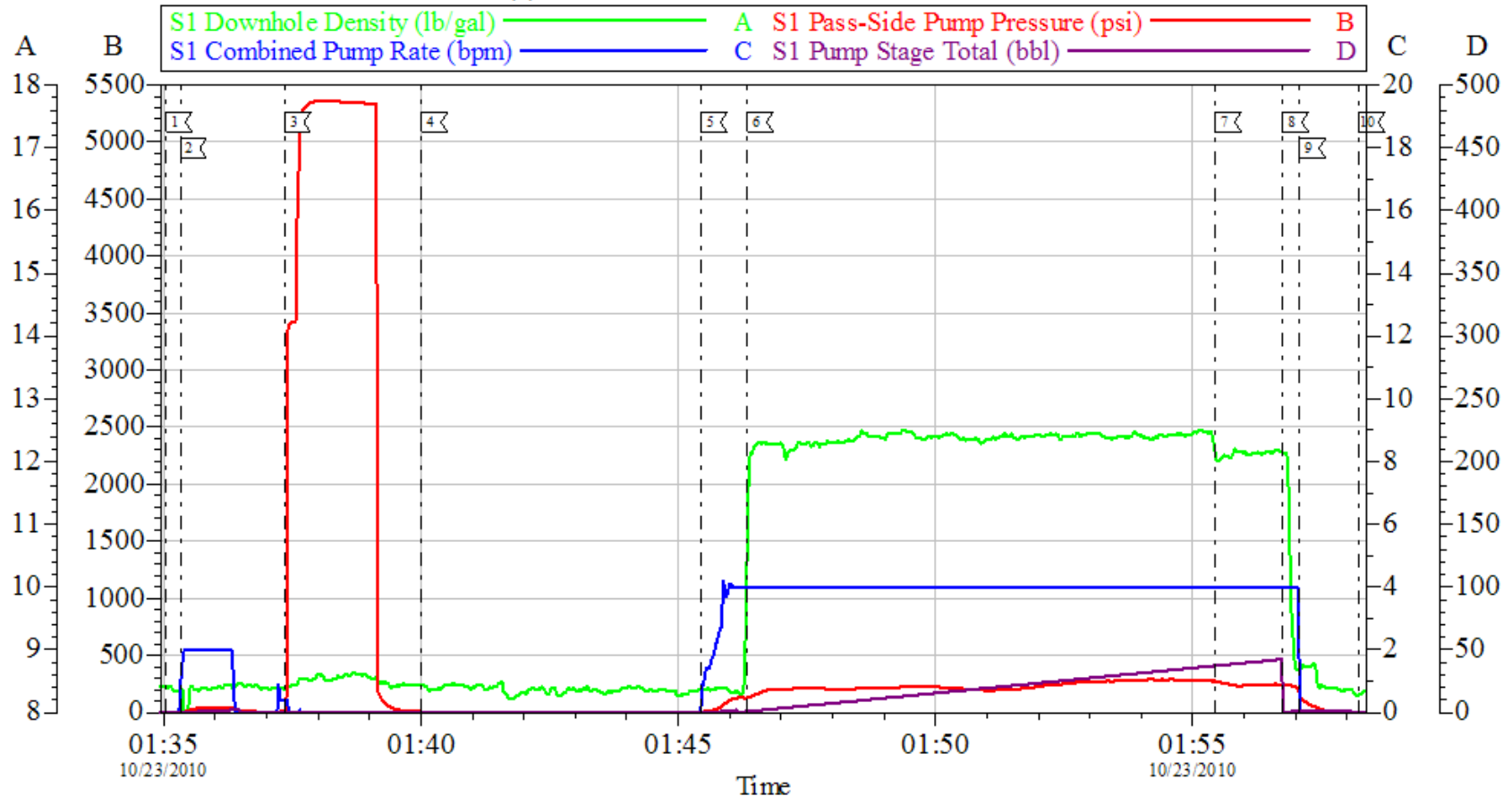
Job Date: 22-Oct-2010
Job Type: TOPOUT
Cement Supervisor: ERIC STILLSON

Sales Order #: 7721904
ADC Used: YES
Elite #: 4 RUSTY WEAVER

OptiCem v6.4.2
22-Oct-10 21:40

MESA ENERGY

(4) TOPOUT 9 5/8 SURFACE CASING



| Local Event Log | | | |
|---------------------|----------|---------------------|----------|
| 1 START TOPOUT 4 | 01:35:02 | 2 FILL LINES | 01:35:19 |
| 3 TEST LINES | 01:37:21 | 4 MIX CEMENT | 01:40:01 |
| 5 PUMP H2O SPACER | 01:45:27 | 6 PUMP CEMENT | 01:46:20 |
| 7 CEMENT TO SURFACE | 01:55:26 | 8 PUMP DISPLACEMENT | 01:56:45 |
| 9 SHUTDOWN | 01:57:05 | 10 END JOB | 01:58:14 |

| | | |
|-------------------------------|----------------------------------|-------------------------|
| Customer: MESA ENERGY | Job Date: 23-Oct-2010 | Sales Order #: 7721904 |
| Well Description: BDU 1-9-299 | Job Type: TOPOUT | ADC Used: YES |
| Company Rep: PHIL CHANEY | Cement Supervisor: ERIC STILLSON | Elite #: 4 RUSTY WEAVER |

OptiCem v6.4.2
23-Oct-10 02:48