
MESA ENERGY PARTNERS LLC

**BDU 1-9-299
WILDCAT
Rio Blanco County , Colorado**

Cement Multiple Stages
17-Oct-2010

Post Job Report

The Road to Excellence Starts with Safety

Sold To #: 358666		Ship To #: 2813563		Quote #:		Sales Order #: 7709077	
Customer: MESA ENERGY PARTNERS LLC				Customer Rep: CHANEY, PHIL			
Well Name: BDU			Well #: 1-9-299		API/UWI #: 05-103-11769		
Field: WILDCAT		City (SAP): RANGELY		County/Parish: Rio Blanco		State: Colorado	
Lat: N 39.905 deg. OR N 39 deg. 54 min. 19.494 secs.				Long: W 108.448 deg. OR W -109 deg. 33 min. 5.778 secs.			
Contractor: FRONTIER			Rig/Platform Name/Num: FRONTIER 2				
Job Purpose: Cement Multiple Stages							
Well Type: Development Well			Job Type: Cement Multiple Stages				
Sales Person: KOHL, KYLE			Srvs Supervisor: ERIC CARTER		MBU ID Emp #: 345598		

Job Personnel

HES Emp Name	Exp Hrs	Emp #	HES Emp Name	Exp Hrs	Emp #	HES Emp Name	Exp Hrs	Emp #
ANDERSON, ADAM S	16	456683	CARTER, ERIC Earl	19.5	345598	HAYES, DIRK A	16	336768
HAYES, JESSE Doug	10	403601	JENSEN, JESSE Robert	6.5	478774	JENSEN, SHANE Lynn	16	441759
MILLER, KEVIN Paul	27	443040	CARPENTER, KEN	19.5	476208			

Equipment

HES Unit #	Distance-1 way	HES Unit #	Distance-1 way	HES Unit #	Distance-1 way	HES Unit #	Distance-1 way
10000394	110 mile	10592964	110 mile	10722398	110 mile	10804487	110 mile
10804579	110 mile	10938658	110 mile	10938673	110 mile	10951251	110 mile
10988964	110 mile	10988978	110 mile	11562538	110 mile		

Job Hours

Date	On Location Hours	Operating Hours	Date	On Location Hours	Operating Hours	Date	On Location Hours	Operating Hours
10/17/10	6.5	2	10/18/10	13	8			

TOTAL Total is the sum of each column separately

Job

Formation Name	Job	Job Times
Formation Depth (MD) Top	Bottom	Date Time Time Zone
Form Type	BHST	Called Out 17 - Oct - 2010 12:00 MST
Job depth MD 3022. ft	Job Depth TVD 3022. ft	On Location 17 - Oct - 2010 17:30 CST
Water Depth	Wk Ht Above Floor 5. ft	Job Started 17 - Oct - 2010 20:10 MST
Perforation Depth (MD) From	To	Job Completed 17 - Oct - 2010 11:07 MST
		Departed Loc 18 - Oct - 2010 13:00 MST

Well Data

Description	New / Used	Max pressure psig	Size in	ID in	Weight lbm/ft	Thread	Grade	Top MD ft	Bottom MD ft	Top TVD ft	Bottom TVD ft
OPEN HOLE				12.25				2287.	3022.		
OPEN HOLE				14.75				.	2287.		
SURFACE CASING	Unknown		9.625	8.921	36.		J-55	.	3022.		

Sales/Rental/3rd Party (HES)

Description	Qty	Qty uom	Depth	Supplier
PLUG,CMTG,TOP,9 5/8,HWE,8.16 MIN/9.06 MA	1	EA		

Tools and Accessories

Type	Size	Qty	Make	Depth	Type	Size	Qty	Make	Depth	Type	Size	Qty	Make
Guide Shoe					Packer					Top Plug			
Float Shoe					Bridge Plug					Bottom Plug			
Float Collar					Retainer					SSR plug set			
Insert Float										Plug Container	9.625"	1	
Stage Tool										Centralizers			

Miscellaneous Materials													
Gelling Agt		Conc		Surfactant		Conc		Acid Type		Qty		Conc	%
Treatment Fld		Conc		Inhibitor		Conc		Sand Type		Size		Qty	
Fluid Data													
Stage/Plug #: 1													
Fluid #	Stage Type	Fluid Name			Qty	Qty uom	Mixing Density lbm/gal	Yield ft3/sk	Mix Fluid Gal/sk	Rate bbl/min	Total Mix Fluid Gal/sk		
1	Fresh Water				10.00	bbl	8.4	.0	.0	3.0			
2	SUPER FLUSH - XLC	SUPERFLUSH-XLC - SBM (549694)			40.00	bbl	10.2	.0	.0	3.0			
3	Fresh Water				10.00	bbl	8.4	.0	.0	3.0			
4	1 st Stage Lead Cement	VARICEM (TM) CEMENT (452009)			360.0	sacks	12.3	2.34	12.53	3.0	12.53		
12.53 Gal		FRESH WATER											
5	1st Stage Tail Cement	VARICEM (TM) CEMENT (452009)			135.0	sacks	12.8	2.08	10.59	3.0	10.59		
10.59 Gal		FRESH WATER											
6	Fresh Water Displacement				100	bbl	8.4	.0	.0	2.0			
7	Mud Displacement				132	bbl	.	.0	.0	.0			
8	Fresh Water Spacer				10.00	bbl	8.4	.0	.0	2.0			
9	2nd Stage Lead Cement	VARICEM (TM) CEMENT (452009)			750.0	sacks	12.3	2.46	14.16	3.0	14.16		
%		D-AIR 3000 (101007446)											
14.16 Gal		FRESH WATER											
10	2nd Stage Tail Cement	VARICEM (TM) CEMENT (452009)			400.0	sacks	12.8	2.18	12.1	3.0	12.1		
%		D-AIR 3000 (101007446)											
12.1 Gal		FRESH WATER											
11	Displacement				145.7	bbl	8.4	.0	.0	4.5			
Calculated Values		Pressures			Volumes								
Displacement		Shut In: Instant				Lost Returns	YES	Cement Slurry		683.9	Pad		
Top Of Cement		5 Min				Cement Returns	0	Actual Displacement			Treatment		
Frac Gradient		15 Min				Spacers		Load and Breakdown			Total Job		
Rates													
Circulating		Mixing				Displacement		Avg. Job					
Cement Left In Pipe	Amount	20.6 ft	Reason	Shoe Joint									
Frac Ring # 1 @	ID		Frac ring # 2 @	ID		Frac Ring # 3 @	ID		Frac Ring # 4 @	ID			
The Information Stated Herein Is Correct					Customer Representative Signature								

The Road to Excellence Starts with Safety

Sold To #: 358666	Ship To #: 2813563	Quote #:	Sales Order #: 7709077
Customer: MESA ENERGY PARTNERS LLC		Customer Rep: CHANEY, PHIL	
Well Name: BDU	Well #: 1-9-299	API/UWI #: 05-103-11769	
Field: WILDCAT	City (SAP): RANGELY	County/Parish: Rio Blanco	State: Colorado
Legal Description:			
Lat: N 39.905 deg. OR N 39 deg. 54 min. 19.494 secs.		Long: W 108.448 deg. OR W -109 deg. 33 min. 5.778 secs.	
Contractor: FRONTIER		Rig/Platform Name/Num: FRONTIER 2	
Job Purpose: Cement Multiple Stages			Ticket Amount:
Well Type: Development Well		Job Type: Cement Multiple Stages	
Sales Person: KOHL, KYLE		Srvc Supervisor: ERIC CARTER	MBU ID Emp #: 345598

Activity Description	Date/Time	Cht #	Rate bbl/min	Volume bbl		Pressure psig		Comments
				Stage	Total	Tubing	Casing	
Call Out	10/17/2010 12:00							
Depart Yard Safety Meeting	10/17/2010 14:30							ATTENDED BY ALL HES CREW
Crew Leave Yard	10/17/2010 14:40							
Arrive At Loc	10/17/2010 17:30							RIG CIRCULATING
Assessment Of Location Safety Meeting	10/17/2010 17:40							ATTENDED BY ALL HES CREW
Other	10/17/2010 17:50							SPOT EQUIPMENT
Pre-Rig Up Safety Meeting	10/17/2010 18:00							ATTENDED BY ALL HES CREW
Rig-Up Equipment	10/17/2010 18:10							
Pre-Job Safety Meeting	10/17/2010 19:40							ATTENDED BY ALL HES CREW, RIG CREW AND COMPANY REP
Start Job	10/17/2010 20:10							TP 3022', TD 3022', MW 9 PPG, SJ 20.57', FC 3001.43', STAGE TOOL AT 1884.96', CASING 9.625", 36#, J-55, HOLE 14.75" TO 2287', 12.25" TO 3022'
Other	10/17/2010 20:10							PRIME LINES
Test Lines	10/17/2010 20:12							PRESSURED UP TO 2000 PSI, PRESSURE HELD
Pump Spacer 1	10/17/2010 20:16		3	10			83.0	FRESH WATER
Pump Spacer 2	10/17/2010 20:20		3	20			78.0	SUPERFLUSH XLC

Activity Description	Date/Time	Cht #	Rate bbl/min	Volume bbl		Pressure psig		Comments
				Stage	Total	Tubing	Casing	
Pump Spacer 1	10/17/2010 20:32		3	10			74.0	FRESH WATER
Pump 1st Stage Lead Slurry	10/17/2010 20:42		3	150			64.0	360 SKS MIXED AT 12.3 PPG, 2.34 YIELD, 12.53 GL/SK
Pump 1st Stage Tail Slurry	10/17/2010 21:41		3	50			70.0	135 SKS MIXED AT 12.8 PPG, 2.08 YIELD, 10.59 GL/SK
Shutdown	10/17/2010 22:03							
Clean Lines	10/17/2010 22:04							CLEANED LINES TO PIT
Drop Bottom Plug	10/17/2010 22:07							
Pump Displacement	10/17/2010 22:07		2	232			400.0	100 BBLS FRESH WATER, 132 BBLS MUD
Shutdown	10/17/2010 23:50							SHUTDOWN AT CALCULATED DISPLACEMENT
Resume	10/17/2010 23:51		2	4			378.0	PUMPED 1.5 BBLS PASSED CALCULATED AT COMPANY REP'S REQUEST
Comment	10/17/2010 23:59							PLUG STUCK IN HEAD BELOW PLUNGER, DISPLACEMENT PUMPED PAST PLUG
Check Floats	10/17/2010 23:59							FLOATS DID NOT HOLD, GOT 2 BBLS BACK AND SHUT IN, PUMPED 2 BBLS AND CHECKED FLOATS SECOND TIME, FLOATS DID NOT HOLD, GOT 2 BBLS BACK, SHUT IN, PUMPED 2 BBLS, CHECKED FLOATS, FLOATS HELD
Drop Opening Device For Multiple Stage Cementer	10/18/2010 00:11							OPENING DEVICE LUANCHED
Open Multiple Stage Cementer	10/18/2010 00:26							MULTIIPLE STAGE TOOL OPENED
Circulate Well	10/18/2010 00:35		4	370			270.0	NO CEMENT TO SURFACE
Other	10/18/2010 02:06							RIG CIRCULATED WELL

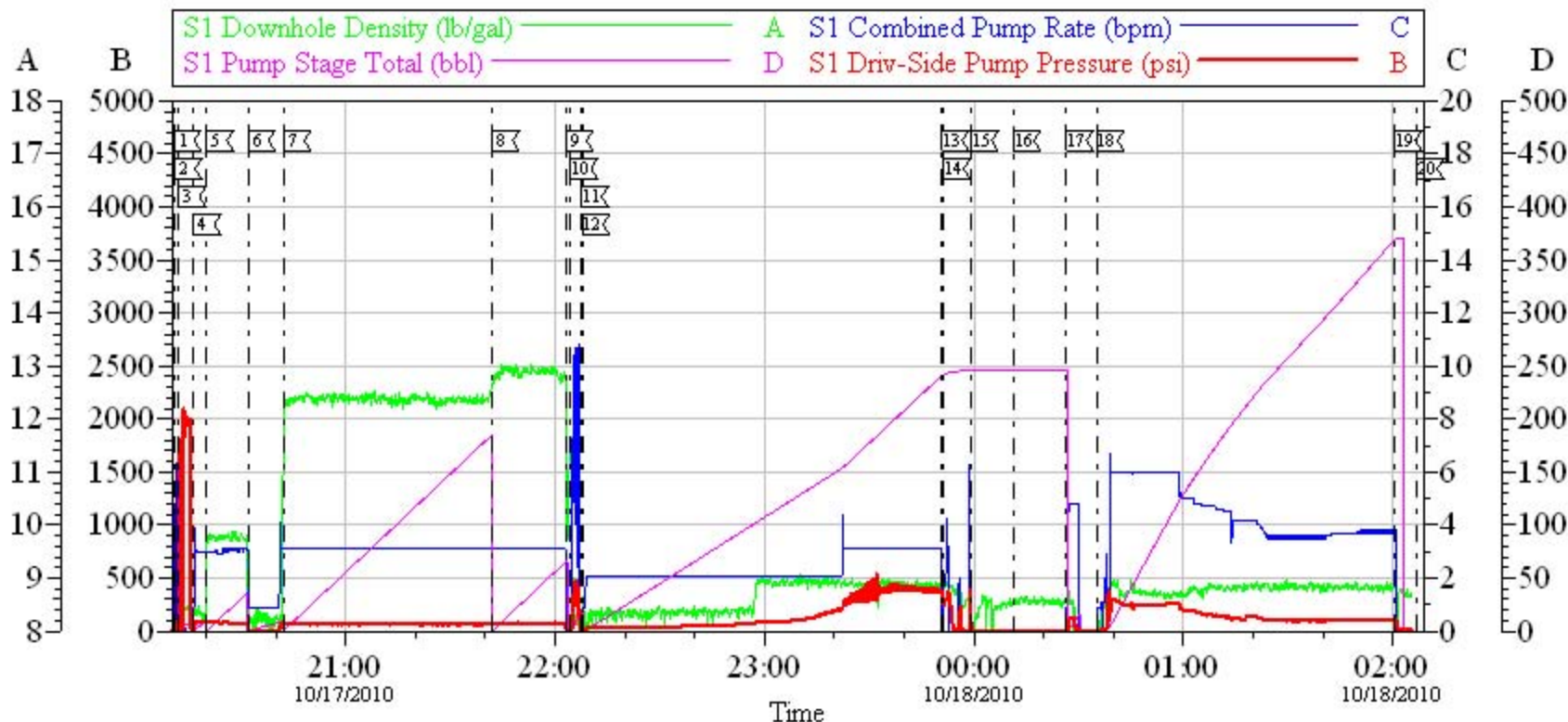
Activity Description	Date/Time	Cht #	Rate bbl/min	Volume bbl		Pressure psig		Comments
				Stage	Total	Tubing	Casing	
Start Job	10/18/2010 04:54							START SECOND STAGE
Pump Spacer 1	10/18/2010 04:54		3	10			89.0	FRESH WATER
Pump 2nd Stage Lead Slurry	10/18/2010 05:03		4	328.6				750 SKS MIXED AT 12.3 PPG, 2.46 YIELD, 14.16 GL/SK, INCREASED RATE TO 4BBLs A MINUTE AT COMPANY REP'S REQUEST
Comment	10/18/2010 05:58							LOST ALL RETURNS AT 195 BBLs PUMPED, SLOWED RATE TO 3 BPM
Shutdown	10/18/2010 06:17						106.0	SHUTDOWN PER KEVIN WELLER'S REQUEST, 260 BBLs OF 2ND STAGE LEAD PUMPED
Resume	10/18/2010 06:28		3				106.0	
Shutdown	10/18/2010 06:34						104.0	SHUTDOWN PER KEVIN WELLER'S REQUEST, 276 BBLs OF 2ND STAGE LEAD PUMPED
Resume	10/18/2010 06:51		3				101.0	
Shutdown	10/18/2010 06:57						100.0	SHUTDOWN PER KEVIN WELLER'S REQUEST, 295 BBLs OF 2ND STAGE LEAD PUMPED
Resume	10/18/2010 07:31		2				58.0	
Shutdown	10/18/2010 07:44						49.0	SHUTDOWN PER KEVIN WELLER'S REQUEST, 318 BBLs OF 2ND STAGE LEAD PUMPED
Resume	10/18/2010 08:14		2				180.0	
Pump 2nd Stage Tail Slurry	10/18/2010 08:32		3	155.3			210.0	400 SKS MIXED AT 12.8 PPG, 2.18 YIELD, 12.1 GL/SK
Shutdown	10/18/2010 09:59							

Cementing Job Log

Activity Description	Date/Time	Cht #	Rate bbl/min	Volume bbl		Pressure psig		Comments
				Stage	Total	Tubing	Casing	
Clean Lines	10/18/2010 10:01							CLEANED LINES TO PIT
Drop Top Plug	10/18/2010 10:04							PLUG LAUNCHED
Pump Displacement	10/18/2010 10:04		4.5	136.7			1000.0	FRESH WATER
Slow Rate	10/18/2010 10:55		2	10			935.0	
Bump Plug	10/18/2010 10:58		2				989.0	PLUG LANDED
Close Multiple Stage Cementer	10/18/2010 11:00						1750.0	PRESSURED UP TO 1750 PSI TO CLOSE
Release Casing Pressure	10/18/2010 11:03							TOOL CLOSED
End Job	10/18/2010 11:07							DID NOT REGAIN RETURNS, 0 BBLS OF CEMENT TO SURFACE, PIPE WAS NOT MOVED DURING JOB
Post-Job Safety Meeting (Pre Rig-Down)	10/18/2010 11:15							ATTENDED BY ALL HES CREW
Rig-Down Equipment	10/18/2010 11:25							
Depart Location Safety Meeting	10/18/2010 12:50							ATTENDED BY ALL HES CREW
Crew Leave Location	10/18/2010 13:00							THANK YOU FOR USING HALLIBURTON CEMENT, ERIC CARTER AND CREW

MESA ENERGY

9.625" 2 STAGE SURFACE/BDU 1-9-299



Local Event Log

1 STARTJOB	10/17/2010 20:10:45	2 PRIME LINES	10/17/2010 20:10:57	3 TEST LINES	10/17/2010 20:12:11
4 PUMP H2O SPACER	10/17/2010 20:16:25	5 PUMP SUPER FLUSH XLC	10/17/2010 20:20:05	6 PUMP H2O SPACER	10/17/2010 20:32:00
7 PUMP 1ST STAGE LEAD	10/17/2010 20:42:12	8 PUMP 1ST STAGE TAIL	10/17/2010 21:41:59	9 SHUTDOWN	10/17/2010 22:03:09
10 CLEAN LINES	10/17/2010 22:04:23	11 DROP BOTTOM PLUG	10/17/2010 22:07:28	12 PUMP DISPLACEMENT	10/17/2010 22:07:51
13 SHUTDOWN	10/17/2010 23:50:49	14 RESUME DISPLACEMENT	10/17/2010 23:51:13	15 CHECK FLOATS	10/17/2010 23:59:14
16 DROP OPENING DEVICE	10/18/2010 00:11:23	17 OPEN STAGE TOOL	10/18/2010 00:26:30	18 CIRCULATE WELL	10/18/2010 00:35:18
19 SHUTDOWN	10/18/2010 02:00:37	20 RIG CIRCULATED WELL	10/18/2010 02:06:54		

Customer: MESA ENERGY PARTNERS LLC
Well Description: BDU 1-9-299
Company Rep: PHIL CHANEY

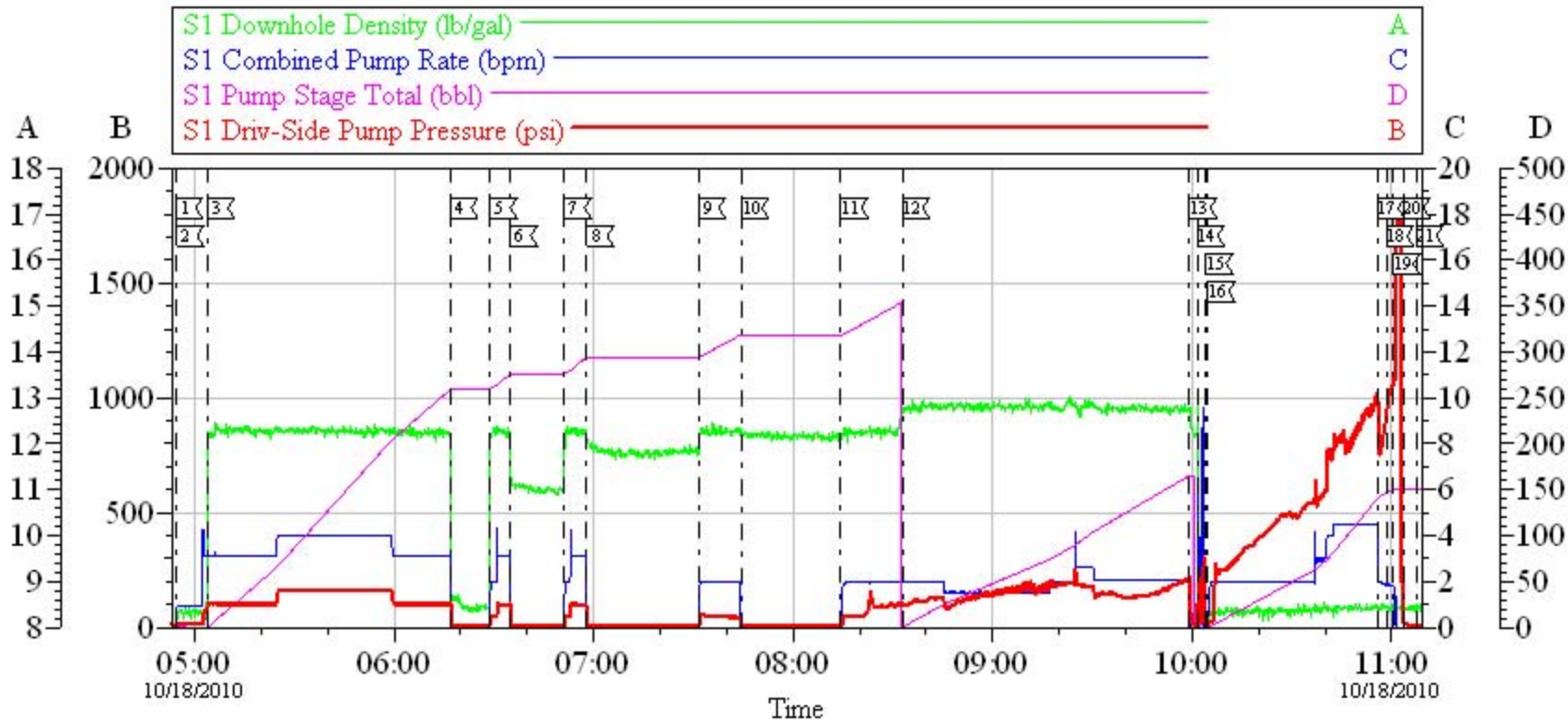
Job Date: 17-Oct-2010
Job Type: 05-103-11769
Cement Supervisor: ERIC CARTER

Sales Order #: 7709077
ADC Used: YES
Elite #/Operator: 5/ADAM ANDERSON

OptiCem v6.4.0
18-Oct-10 02:38

MESA ENERGY

9.625" 2 STAGE SURFACE/BDU 1-9-299



Customer: MESA ENERGY PARTNERS LLC
 Well Description: BDU 1-9-299
 Company Rep: PHIL CHANEY

Job Date: 18-Oct-2010
 Job Type: 05-103-11769
 Cement Supervisor: ERIC CARTER

Sales Order #: 7709077
 ADC Used: YES
 Elite #/Operator: 5/ADAM ANDERSON

OptiCem v6.4.0
 18-Oct-10 11:41