

CCL	21.94		CCL-275tekco (2.75TEKCO) 2 3/4 TEK CCL Earth Mag	1.53	2.75	20.00
			SDSCENT Centralizer for testing	2.74	3.25	20.00
TEMP	15.75					
WVFS1	14.42					
WVFS2	14.42					
WVFS3	14.42		275CTEKSECWTWSLCANS-275RIB (12349.54 2 3/4" (R.I.B.) TOOL 3FT, 5FT and 8EA RIB SIGNALS 400 DEG "F" @20K PSI With Sliding Cans For Pressure Ballance		2.75	102.00
WVFS4	14.42					
WVFS5	14.42					
WVFS6	14.42					
WVFS7	14.42					
WVFS8	14.42					
WVF3FT	13.67					
WVF5FT	12.63					
WVFCAL	8.83					
WVFTEMP	8.83					
WVFSYNC	8.83		SDSCENT Centralizer for testing	2.74	3.25	20.00
			GR-Tek-Co (Tek-Co2) 2 3/4 400deg Scint gamma	3.35	2.75	40.00
GR	3.78					
			SDSCENT Centralizer for testing	2.74	3.25	20.00

Dataset:
sundance_hfe_14-22.db: 6jul12/mld_14-22/cbl/pass4

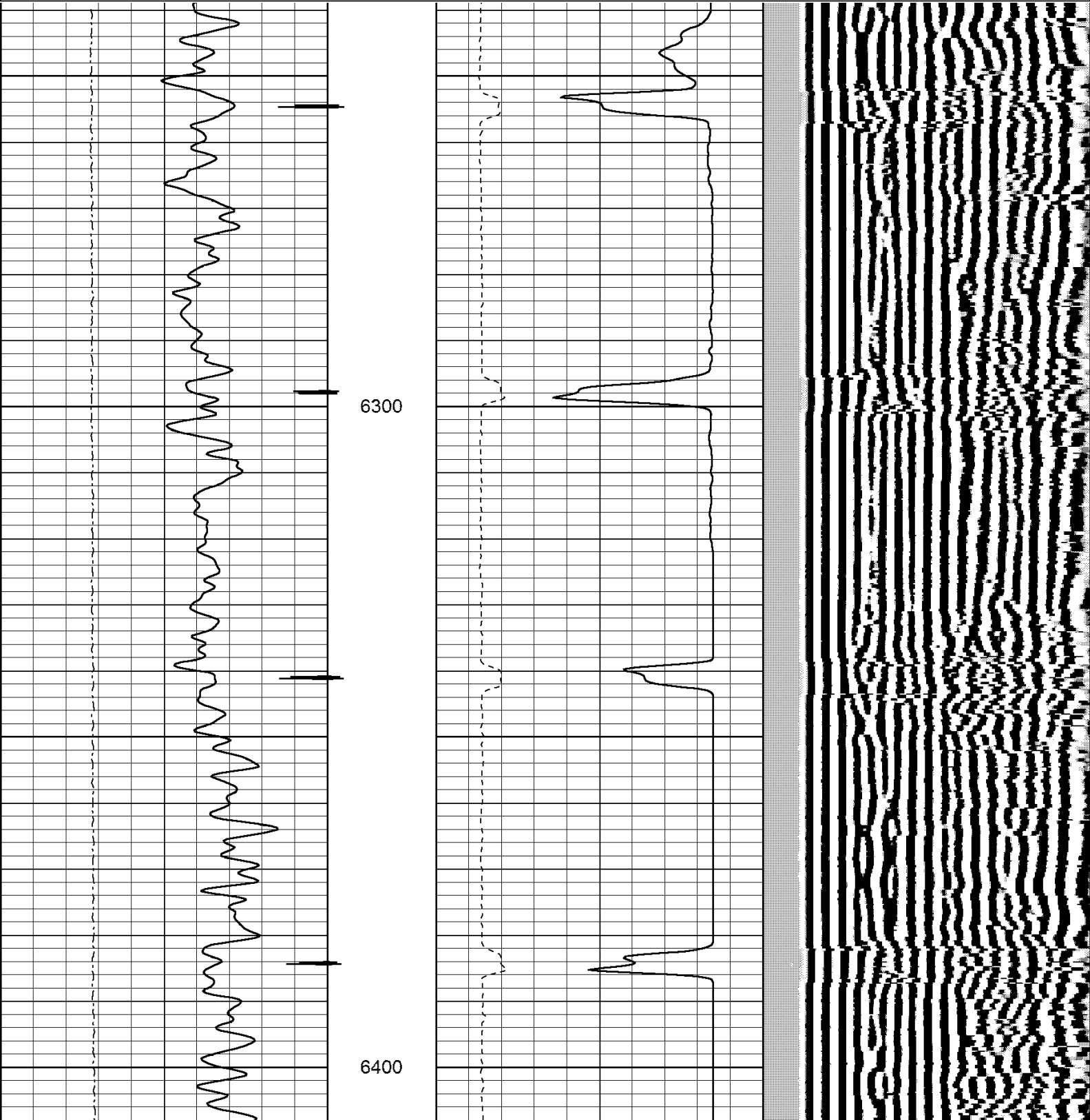
Total Length:
23.64 ft

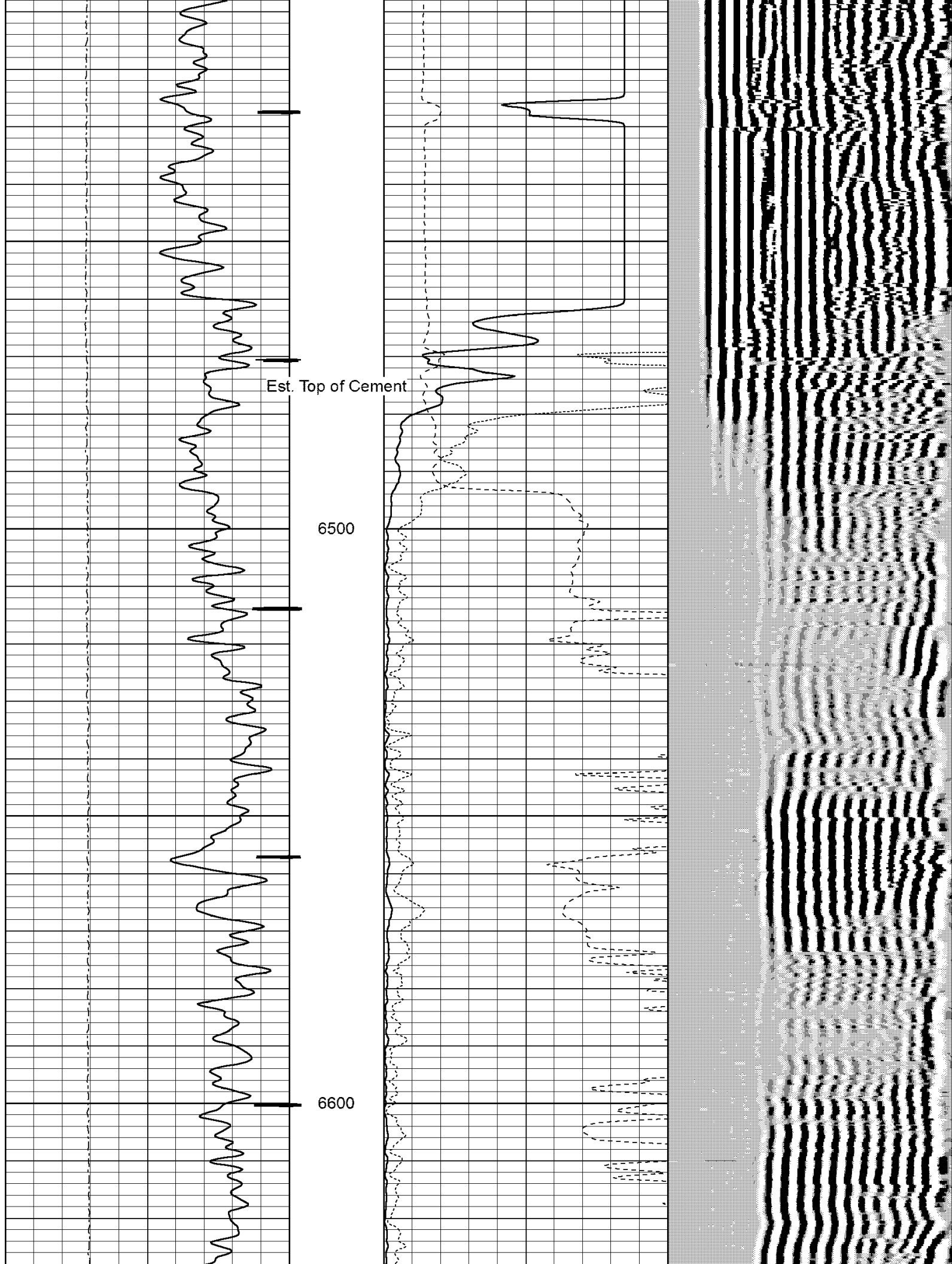
Total Weight:
232.00 lb

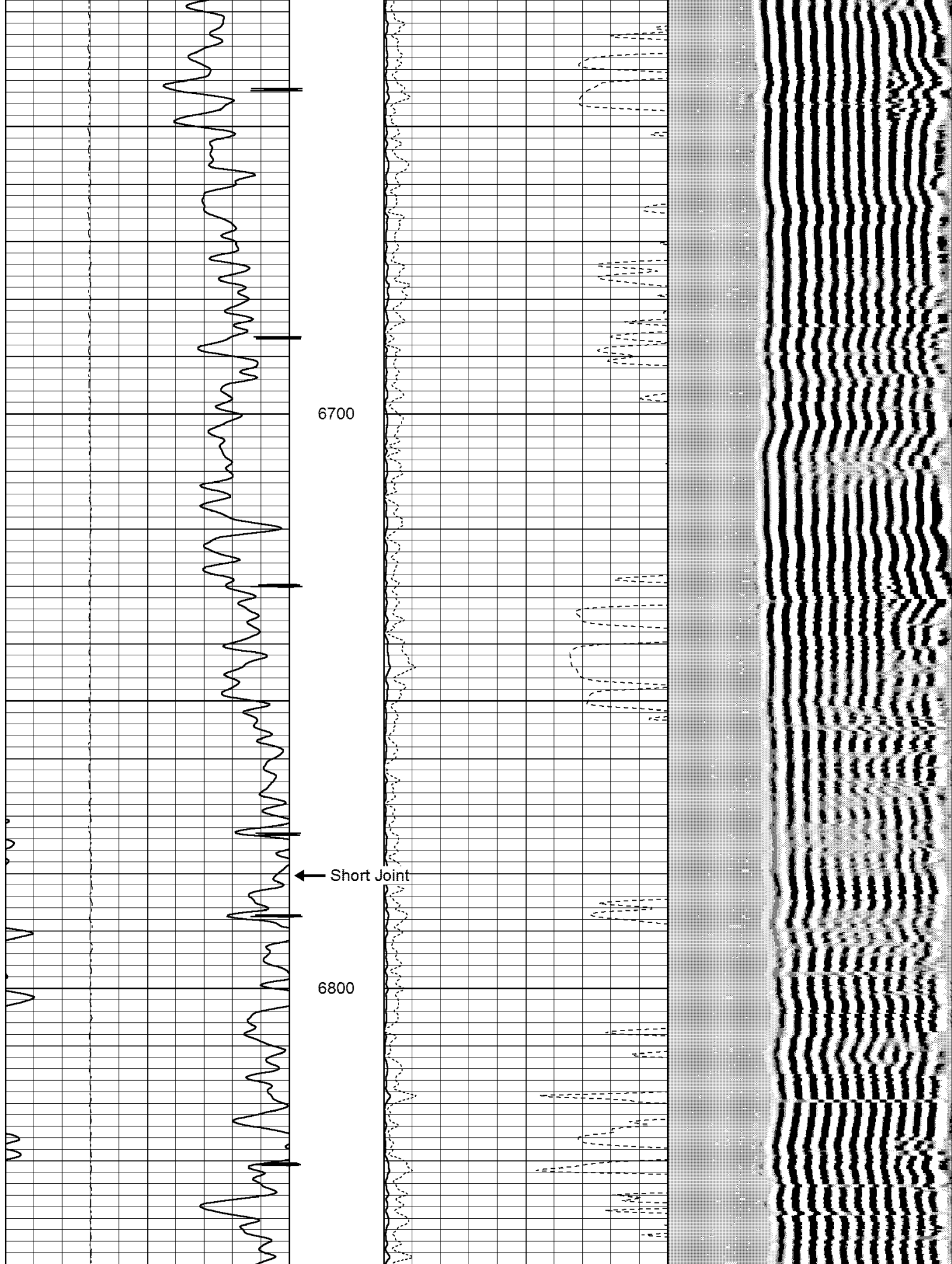
O.D.
3.25 in

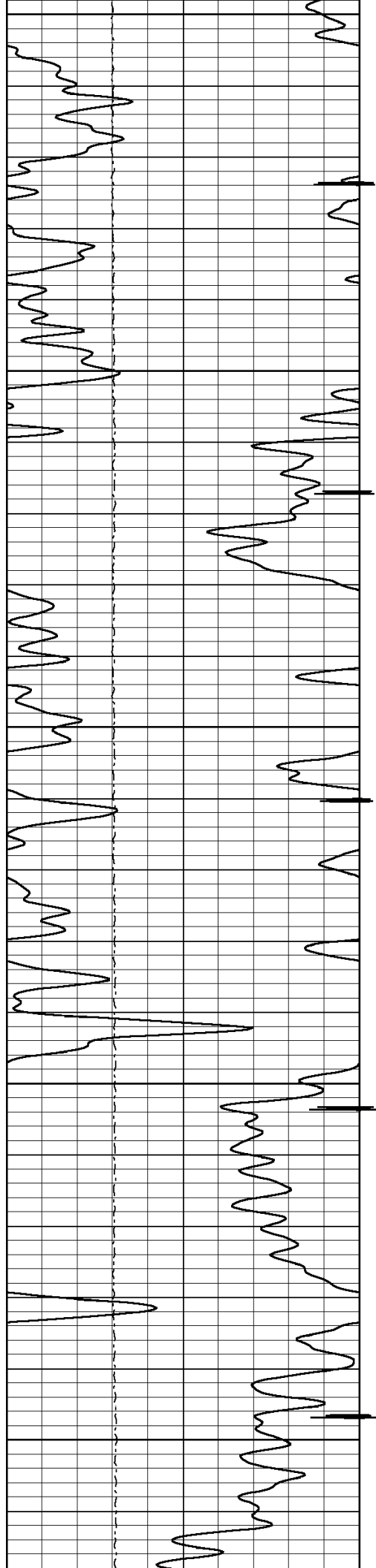
Database File: sundance_hfe_14-22.db
 Dataset Pathname: 6jul12/mld_14-22/cbl/pass4
 Presentation Format: cbl
 Dataset Creation: Fri Jul 06 13:04:52 2012 by Log SCH 111116
 Charted by: Depth in Feet scaled 1:240

Collar Locator		0	3' Amplitude X 5 (mV)	20	200	5' Variable Density Log	1200
0	Gamma Ray	150	0	3' Amplitude (mV)	100		
0	Line Tension (lb)	5000	200	3' Travel Time (usec)	300		



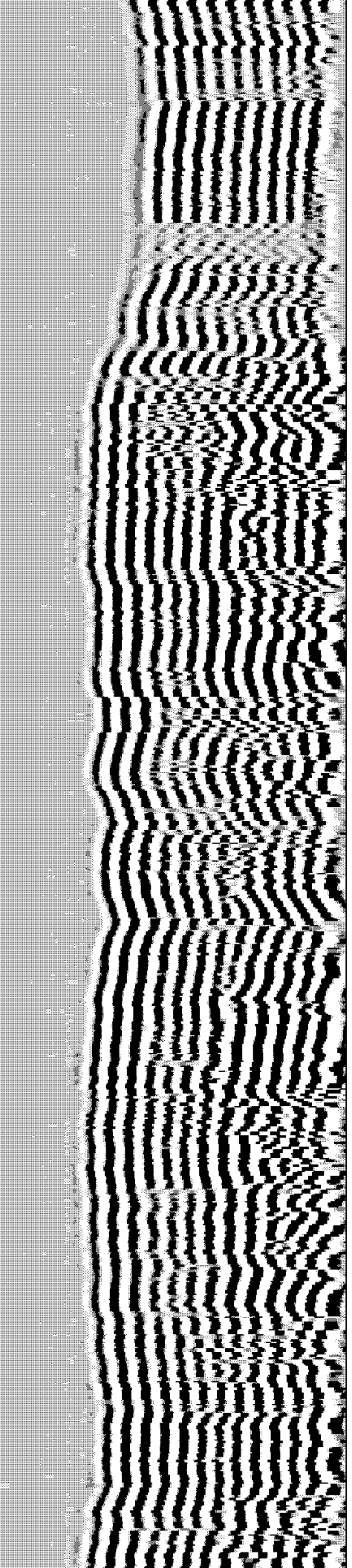
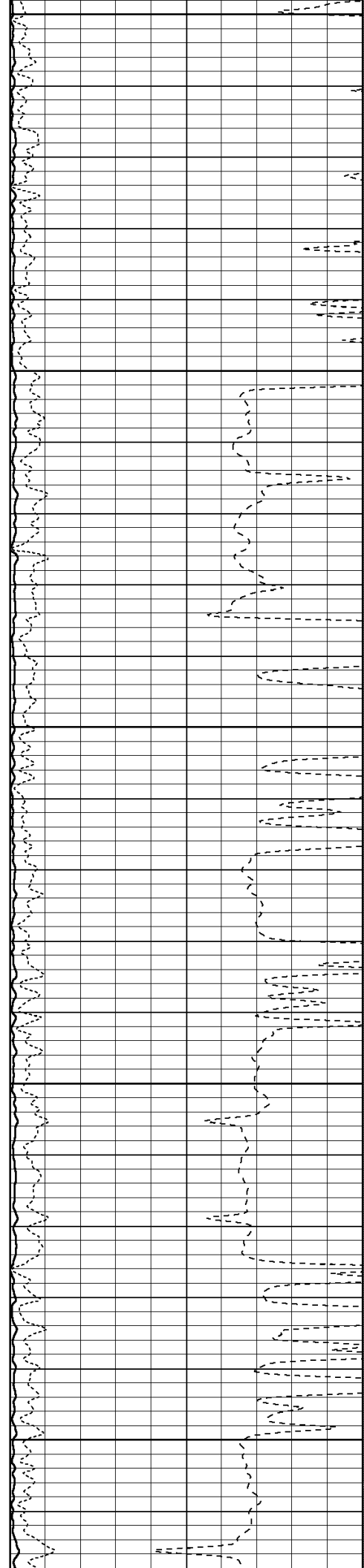


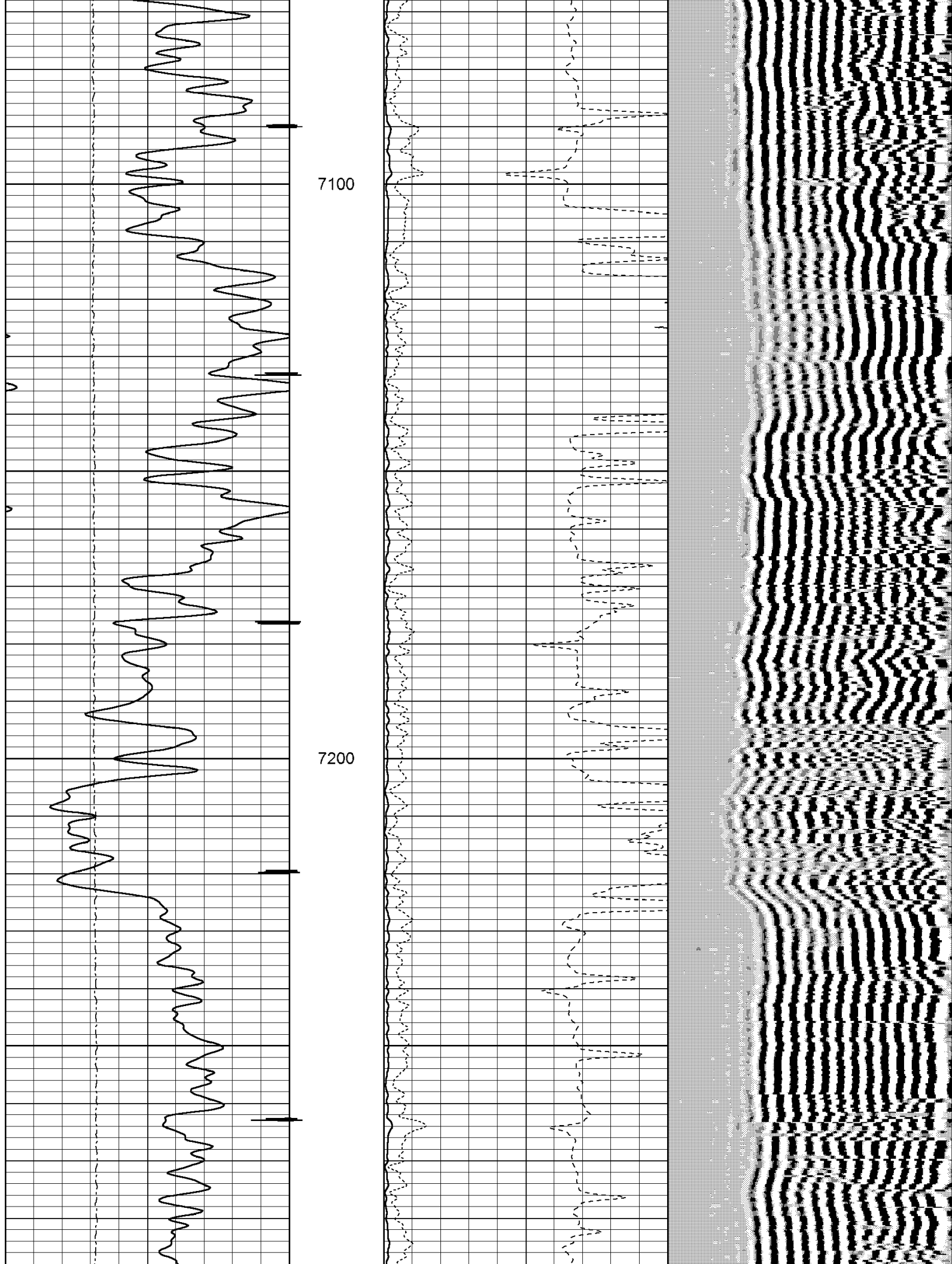


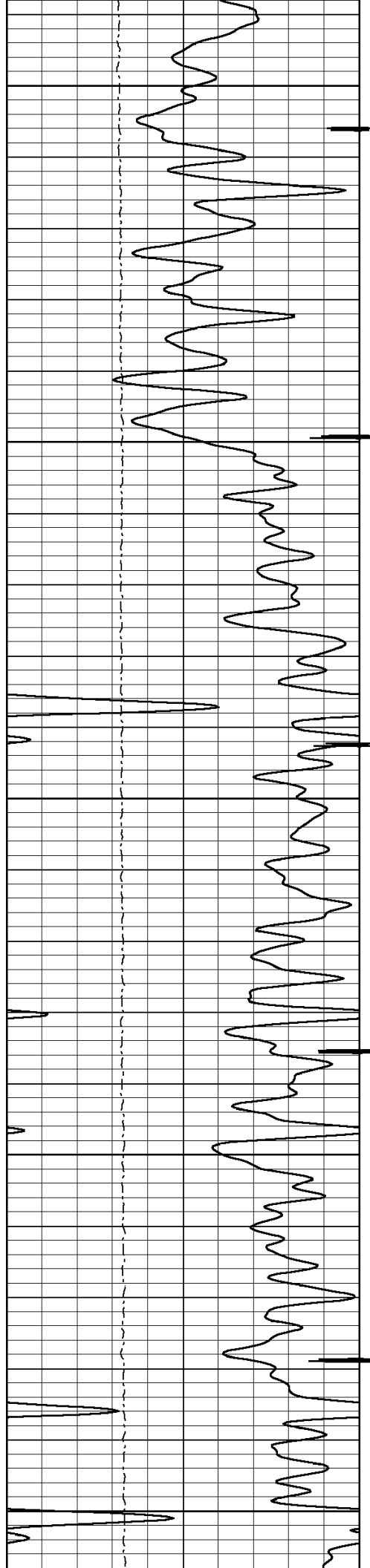


6900

7000



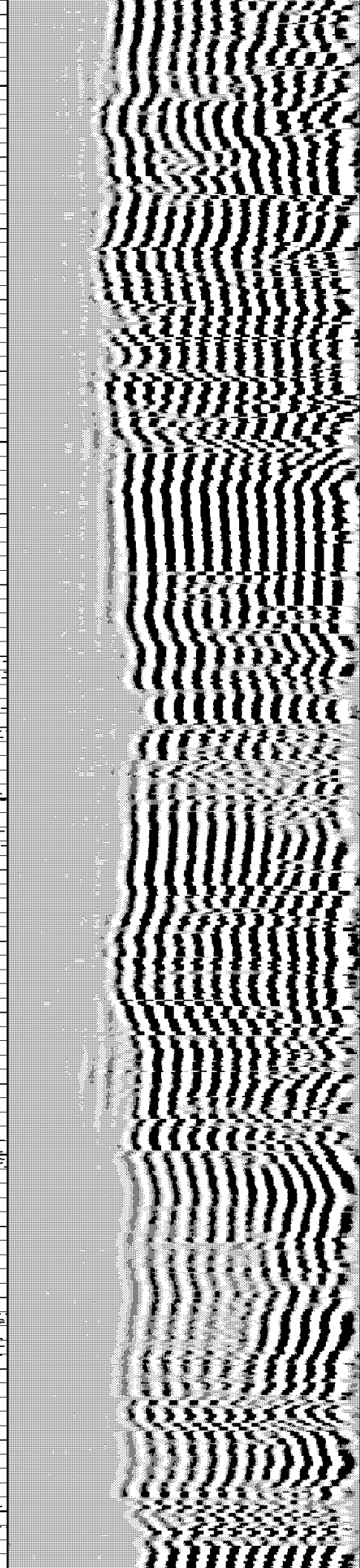
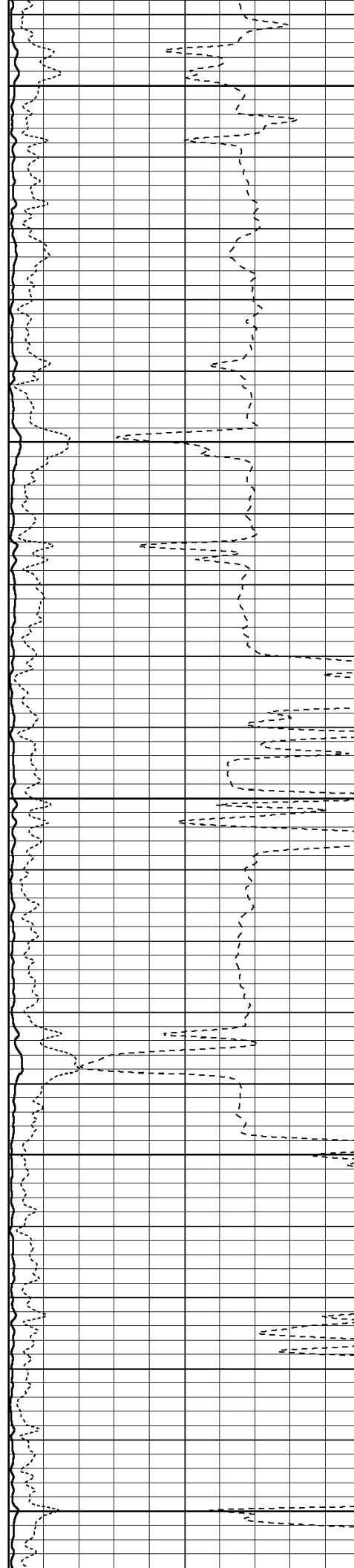


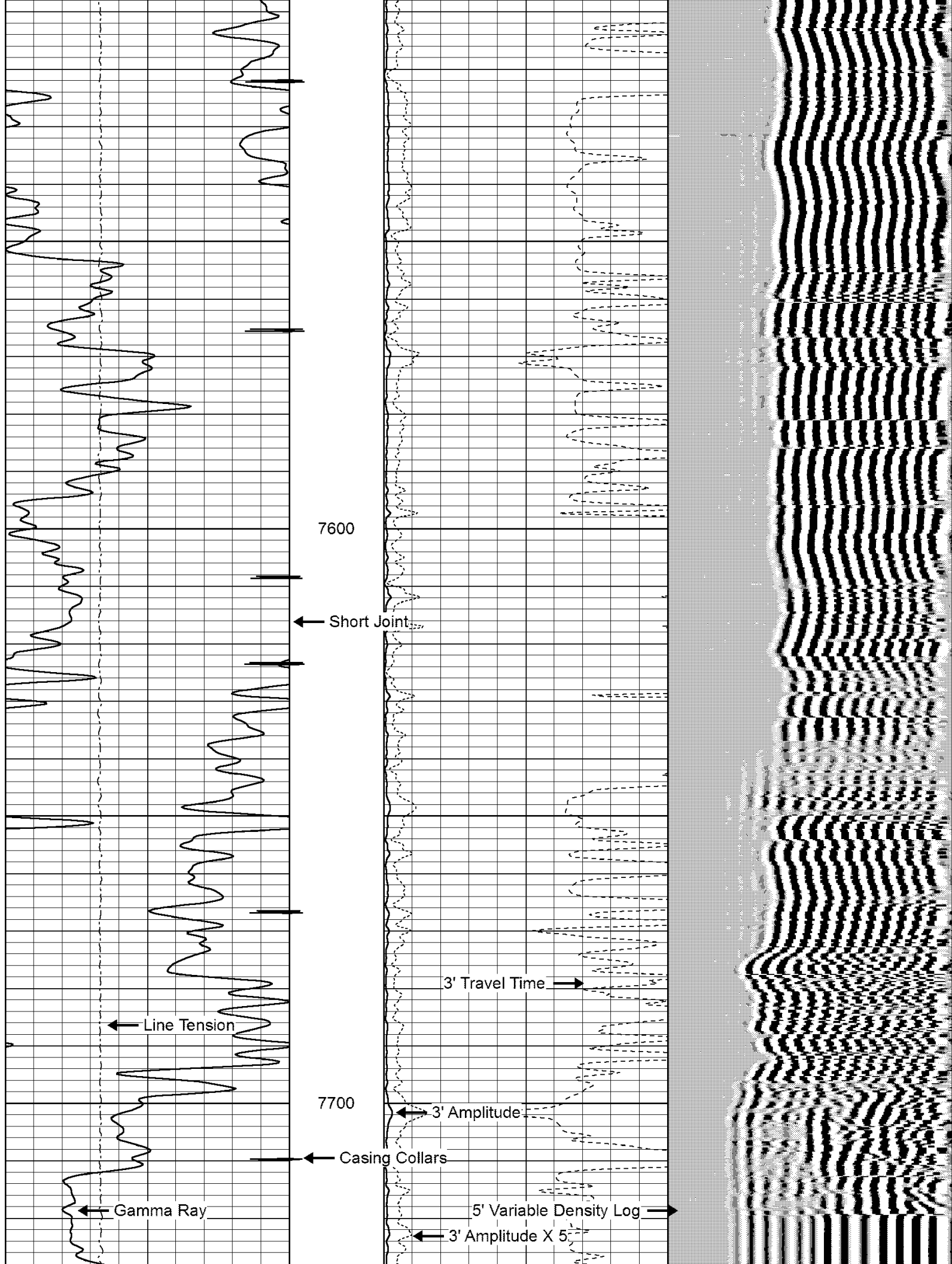


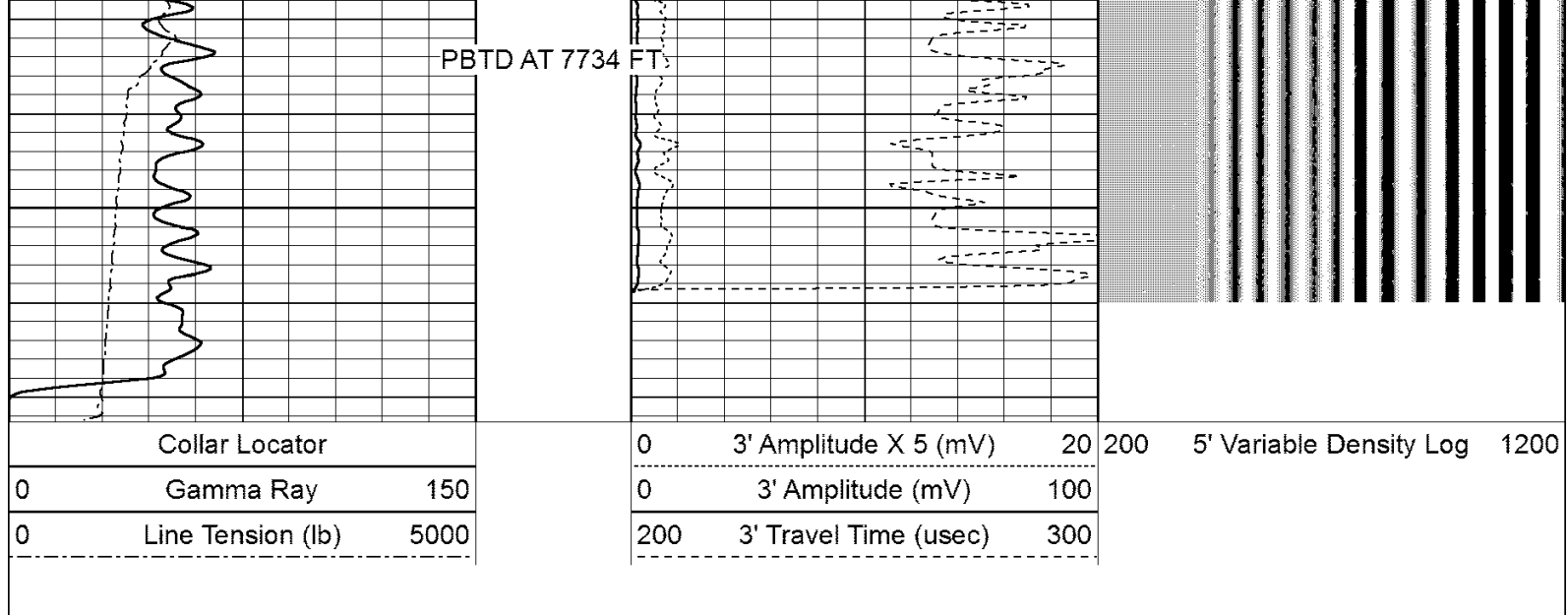
7300

7400

7500







Calibration Report

Database File: sundance_hfe_14-22.db
 Dataset Pathname: 6jul12/mld_14-22/cbl/pass4
 Dataset Creation: Fri Jul 06 13:04:52 2012 by Log SCH 111116

Gamma Ray Calibration Report

Serial Number: Tek-Co2
 Tool Model: Tek-Co
 Performed: Sat Jun 23 13:58:49 2012

Calibrator Value: 1.0

Background Reading: 0.0 cps
 Calibrator Reading: 1.0 cps

Sensitivity: 1.0000 /cps

Segmented Cement Bond Log Calibration Report

Serial Number: 1234
 Tool Model: 275RIB

Calibration Casing Diameter: 4.500 in
 Calibration Depth: 226.916 ft

Master Calibration, performed Fri Jul 06 12:47:53 2012:

	Raw (v)		Calibrated (mv)		Results	
	Zero	Cal	Zero	Cal	Gain	Offset
3'	0.114	2.497	0.000	81.196	34.070	-3.873
CAL	-0.001	2.500				
5'	-0.014	2.500	0.000	81.196	32.294	0.462
SUM						
S1	0.060	2.500	0.000	100.000	40.979	-2.448
S2	0.078	2.500	0.000	100.000	41.281	-3.203
S3	0.091	2.451	0.000	100.000	42.370	-3.858
S4	0.058	2.417	0.000	100.000	42.383	-2.454
S5	0.072	2.374	0.000	100.000	43.439	-3.122
S6	0.069	2.456	0.000	100.000	41.882	-2.874
S7	0.064	2.477	0.000	100.000	41.441	-2.671
S8	0.091	2.500	0.000	100.000	41.505	-3.761

Internal Reference Calibration, performed Fri Jul 06 12:51:18 2012:

	Raw (v)		Calibrated (v)		Results	
	Zero	Cal	Zero	Cal	Gain	Offset
CAL	-0.003	2.500	-0.001	2.500	0.999	0.002

Air Zero Calibration, performed Fri Jul 06 12:49:26 2012:

	Raw (v)		Calibrated (v)		Results
	Zero		Zero		Offset
3'	0.010		0.000		0.104
5'	-0.042		0.000		0.028
SUM					
S1	0.100		0.000		-0.040
S2	0.086		0.000		-0.009
S3	0.097		0.000		-0.006
S4	0.086		0.000		-0.028
S5	0.068		0.000		0.004
S6	0.082		0.000		-0.013
S7	0.088		0.000		-0.023
S8	0.055		0.000		0.036

Temperature Calibration Report

Serial Number: 1234
Tool Model: 275RIB
Performed: Sat Jun 23 13:58:53 2012

	Reference	Reading
Low Reference:	75.00 degF	300.00 usec
High Reference:	400.00 degF	1282.00usec
Gain:	0.33	
Offset:	0.00	
Delta Spacing	1	



Company SUNDANCE ENERGY INC.

Well HFE 14-22

Field WATTENBERG

County WELD

State COLORADO

Country USA