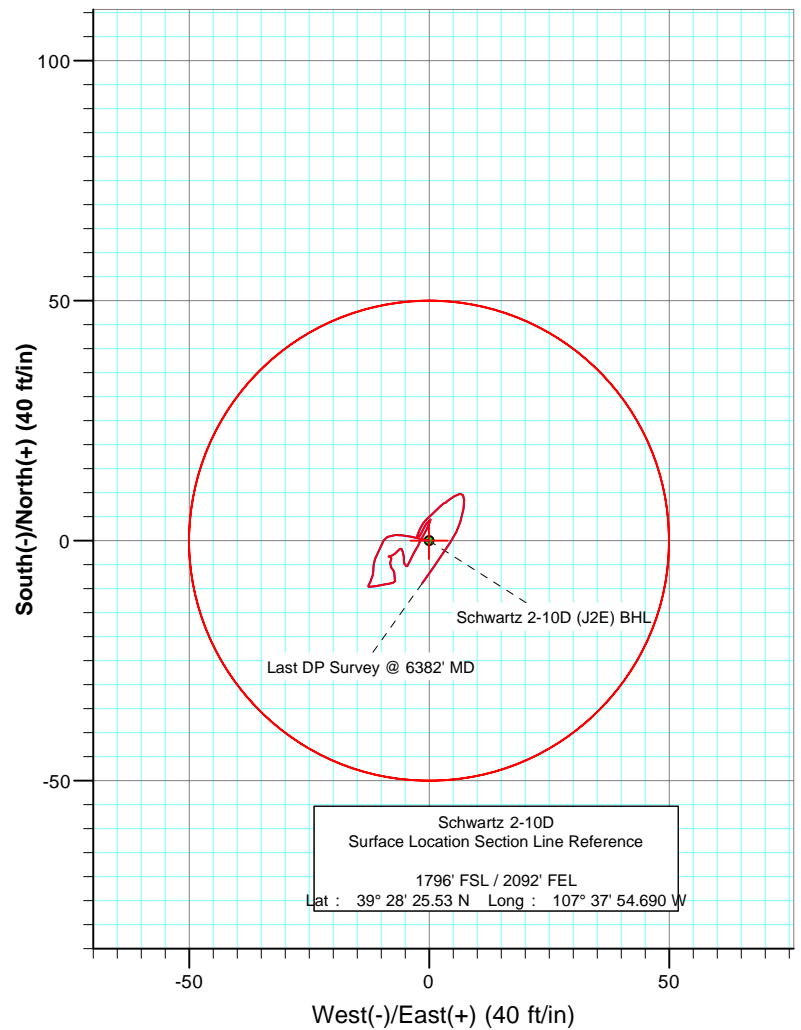
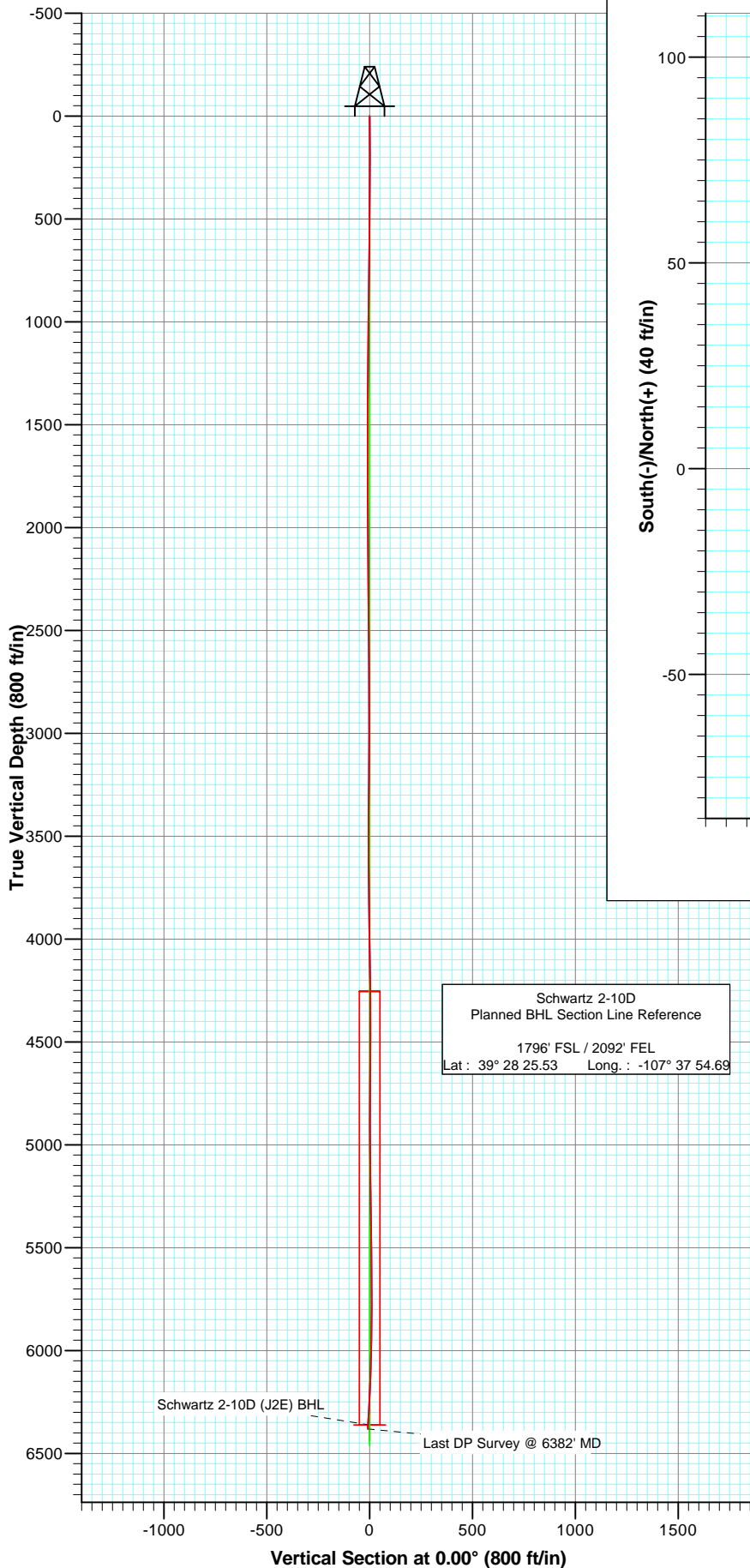




Project: S. Piceance  
Site: NWSE Sec2-T7S-R92W (J2E)  
Well: Schwartz 2-10D  
Wellbore: Vh  
Plan: Final Survey



Azimuths to True North  
Magnetic North: 10.58°  
Magnetic Field  
Strength: 52630.4snT  
Dip Angle: 65.89°  
Date: 4/3/2008  
Model: IGRF200510

DESIGN DETAILS: Vh

Job# 85170; LR  
WELL @ 6095.0ft (Xtreme 7)

Target	Azimuth	Origin	Type	N/S	E/W	From TVD
No Target (Freehand)	0.00	Slot		0.0	0.0	0.0

# Directional Plus

## Survey Report

<b>Company:</b>	EnCana Oil & Gas (USA) Inc	<b>Local Co-ordinate Reference:</b>	Well Schwartz 2-10D
<b>Project:</b>	S. Piceance	<b>TVD Reference:</b>	WELL @ 6095.0ft (Xtreme 7)
<b>Site:</b>	NWSE Sec2-T7S-R92W (J2E)	<b>MD Reference:</b>	WELL @ 6095.0ft (Xtreme 7)
<b>Well:</b>	Schwartz 2-10D	<b>North Reference:</b>	True
<b>Wellbore:</b>	Vh	<b>Survey Calculation Method:</b>	Minimum Curvature
<b>Design:</b>	Vh	<b>Database:</b>	EDM 2003.21 US Multi User Db

<b>Project</b>	S. Piceance, Garfield County, CO		
<b>Map System:</b>	US State Plane 1983	<b>System Datum:</b>	Mean Sea Level
<b>Geo Datum:</b>	North American Datum 1983		
<b>Map Zone:</b>	Colorado Central Zone		

<b>Site</b>	NWSE Sec2-T7S-R92W (J2E)			
<b>Site Position:</b>		<b>Northing:</b>	1,604,467.02 ft	<b>Latitude:</b> 39° 28' 25.14 N
<b>From:</b>	Lat/Long	<b>Easting:</b>	2,398,248.85 ft	<b>Longitude:</b> 107° 37' 54.740 W
<b>Position Uncertainty:</b>	0.0 ft	<b>Slot Radius:</b>	"	<b>Grid Convergence:</b> -1.34 °

<b>Well</b>	Schwartz 2-10D			
<b>Well Position</b>	<b>+N/-S</b>	0.0 ft	<b>Northing:</b>	1,604,506.37 ft
	<b>+E/-W</b>	0.0 ft	<b>Easting:</b>	2,398,253.70 ft
<b>Position Uncertainty</b>	0.0 ft	<b>Wellhead Elevation:</b>	ft	<b>Ground Level:</b> 6,076.0 ft

<b>Wellbore</b>	Vh				
<b>Magnetics</b>	<b>Model Name</b>	<b>Sample Date</b>	<b>Declination (°)</b>	<b>Dip Angle (°)</b>	<b>Field Strength (nT)</b>
	IGRF200510	4/3/2008	10.58	65.89	52,630

<b>Design</b>	Vh			
<b>Audit Notes:</b>				
<b>Version:</b>	1.0	<b>Phase:</b>	ACTUAL	<b>Tie On Depth:</b> 0.0
<b>Vertical Section:</b>	<b>Depth From (TVD) (ft)</b>	<b>+N/-S (ft)</b>	<b>+E/-W (ft)</b>	<b>Direction (°)</b>
	0.0	0.0	0.0	0.00

<b>Survey Program</b>	<b>Date</b>	4/18/2008		
<b>From (ft)</b>	<b>To (ft)</b>	<b>Survey (Wellbore)</b>	<b>Tool Name</b>	<b>Description</b>
116.0	6,382.0	Survey #1 (Vh)	MWD	Geolink MWD

<b>Survey</b>									
<b>Measured Depth (ft)</b>	<b>Inclination (°)</b>	<b>Azimuth (°)</b>	<b>Vertical Depth (ft)</b>	<b>+N/-S (ft)</b>	<b>+E/-W (ft)</b>	<b>Vertical Section (ft)</b>	<b>Dogleg Rate (°/100ft)</b>	<b>Build Rate (°/100ft)</b>	<b>Formations / Comments</b>
0.0	0.00	0.00	0.0	0.0	0.0	0.0	0.00	0.00	
116.0	1.10	282.56	116.0	0.2	-1.1	0.2	0.95	0.95	
209.0	2.40	282.56	208.9	0.9	-3.9	0.9	1.40	1.40	
303.0	1.50	264.96	302.9	1.2	-7.0	1.2	1.14	-0.96	
396.0	0.70	240.36	395.9	0.8	-8.7	0.8	0.98	-0.86	
490.0	0.70	210.86	489.9	0.0	-9.5	0.0	0.38	0.00	
583.0	0.60	199.46	582.9	-0.9	-10.0	-0.9	0.18	-0.11	
675.0	0.60	209.76	674.9	-1.8	-10.4	-1.8	0.12	0.00	
765.0	0.70	201.76	764.9	-2.7	-10.8	-2.7	0.15	0.11	
857.0	0.80	204.46	856.8	-3.8	-11.3	-3.8	0.12	0.11	
948.0	0.80	182.66	947.8	-5.0	-11.6	-5.0	0.33	0.00	
1,039.0	0.80	180.76	1,038.8	-6.3	-11.6	-6.3	0.03	0.00	
1,100.0	0.80	196.16	1,099.8	-7.1	-11.7	-7.1	0.35	0.00	

# Directional Plus

## Survey Report

<b>Company:</b>	EnCana Oil & Gas (USA) Inc	<b>Local Co-ordinate Reference:</b>	Well Schwartz 2-10D
<b>Project:</b>	S. Piceance	<b>TVD Reference:</b>	WELL @ 6095.0ft (Xtreme 7)
<b>Site:</b>	NWSE Sec2-T7S-R92W (J2E)	<b>MD Reference:</b>	WELL @ 6095.0ft (Xtreme 7)
<b>Well:</b>	Schwartz 2-10D	<b>North Reference:</b>	True
<b>Wellbore:</b>	Vh	<b>Survey Calculation Method:</b>	Minimum Curvature
<b>Design:</b>	Vh	<b>Database:</b>	EDM 2003.21 US Multi User Db

### Survey

Measured Depth (ft)	Inclination (°)	Azimuth (°)	Vertical Depth (ft)	+N/-S (ft)	+E/-W (ft)	Vertical Section (ft)	Dogleg Rate (°/100ft)	Build Rate (°/100ft)	Formations / Comments
1,249.0	0.40	206.56	1,248.8	-8.6	-12.2	-8.6	0.28	-0.27	
1,340.0	0.60	208.06	1,339.8	-9.3	-12.6	-9.3	0.22	0.22	
1,430.0	0.80	77.06	1,429.8	-9.6	-12.2	-9.6	1.42	0.22	
1,521.0	0.50	89.36	1,520.8	-9.4	-11.2	-9.4	0.36	-0.33	
1,612.0	0.60	74.26	1,611.8	-9.3	-10.4	-9.3	0.19	0.11	
1,702.0	0.70	79.16	1,701.8	-9.1	-9.4	-9.1	0.13	0.11	
1,793.0	0.60	85.46	1,792.8	-8.9	-8.3	-8.9	0.13	-0.11	
1,884.0	0.40	70.46	1,883.8	-8.8	-7.6	-8.8	0.26	-0.22	
1,975.0	0.40	35.06	1,974.8	-8.4	-7.1	-8.4	0.27	0.00	
2,057.0	0.30	217.50	2,056.8	-8.4	-7.0	-8.4	0.85	-0.12	
2,148.0	1.00	2.00	2,147.8	-7.8	-7.2	-7.8	1.38	0.77	
2,239.0	0.70	341.90	2,238.8	-6.4	-7.3	-6.4	0.46	-0.33	
2,329.0	0.70	308.30	2,328.8	-5.6	-7.9	-5.6	0.45	0.00	
2,420.0	0.80	18.70	2,419.8	-4.6	-8.1	-4.6	0.95	0.11	
2,510.0	0.40	17.50	2,509.7	-3.7	-7.8	-3.7	0.44	-0.44	
2,601.0	0.40	296.00	2,600.7	-3.3	-8.0	-3.3	0.57	0.00	
2,692.0	0.20	226.30	2,691.7	-3.3	-8.4	-3.3	0.42	-0.22	
2,783.0	0.50	81.30	2,782.7	-3.3	-8.2	-3.3	0.74	0.33	
2,873.0	1.10	48.80	2,872.7	-2.7	-7.1	-2.7	0.81	0.67	
2,968.0	0.50	41.50	2,967.7	-1.8	-6.2	-1.8	0.64	-0.63	
3,054.0	0.30	141.40	3,053.7	-1.7	-5.8	-1.7	0.73	-0.23	
3,145.0	0.70	162.90	3,144.7	-2.4	-5.5	-2.4	0.48	0.44	
3,236.6	0.60	176.00	3,236.3	-3.4	-5.3	-3.4	0.19	-0.11	
3,327.0	0.50	186.10	3,326.7	-4.3	-5.3	-4.3	0.15	-0.11	
3,418.0	0.30	138.30	3,417.7	-4.8	-5.2	-4.8	0.41	-0.22	
3,508.0	0.40	138.50	3,507.7	-5.2	-4.8	-5.2	0.11	0.11	
3,599.0	0.80	25.20	3,598.7	-4.9	-4.3	-4.9	1.13	0.44	
3,690.0	0.40	21.70	3,689.7	-4.0	-3.9	-4.0	0.44	-0.44	
3,780.0	0.40	25.50	3,779.7	-3.5	-3.7	-3.5	0.03	0.00	
3,871.0	0.90	31.40	3,870.7	-2.6	-3.2	-2.6	0.55	0.55	
3,962.0	1.20	29.10	3,961.7	-1.1	-2.3	-1.1	0.33	0.33	
4,053.0	0.90	20.50	4,052.7	0.4	-1.6	0.4	0.37	-0.33	
4,144.0	0.50	45.60	4,143.7	1.3	-1.1	1.3	0.54	-0.44	
4,234.0	1.00	20.20	4,233.6	2.3	-0.5	2.3	0.65	0.56	
4,325.0	0.90	22.20	4,324.6	3.7	0.0	3.7	0.12	-0.11	
4,416.0	0.00	183.60	4,415.6	4.4	0.3	4.4	0.99	-0.99	
4,506.0	0.60	229.30	4,505.6	4.1	-0.1	4.1	0.67	0.67	
4,597.0	0.70	215.60	4,596.6	3.3	-0.8	3.3	0.20	0.11	
4,687.0	1.40	201.90	4,686.6	1.9	-1.5	1.9	0.82	0.78	
4,777.0	0.50	265.30	4,776.6	0.8	-2.3	0.8	1.40	-1.00	
4,868.0	0.70	30.30	4,867.6	1.3	-2.4	1.3	1.17	0.22	
4,959.0	0.10	280.60	4,958.6	1.8	-2.2	1.8	0.81	-0.66	
5,049.0	1.40	26.40	5,048.6	2.8	-1.8	2.8	1.59	1.44	
5,140.0	0.70	47.90	5,139.6	4.1	-0.9	4.1	0.87	-0.77	
5,231.0	0.30	48.10	5,230.6	4.7	-0.3	4.7	0.44	-0.44	
5,321.0	1.80	46.40	5,320.5	5.8	0.9	5.8	1.67	1.67	
5,412.0	1.10	47.10	5,411.5	7.4	2.6	7.4	0.77	-0.77	
5,503.0	0.10	166.80	5,502.5	7.9	3.2	7.9	1.27	-1.10	
5,593.0	1.00	49.50	5,592.5	8.3	3.9	8.3	1.17	1.00	
5,684.0	1.10	60.00	5,683.5	9.3	5.2	9.3	0.24	0.11	
5,775.0	0.60	79.50	5,774.5	9.8	6.4	9.8	0.63	-0.55	
5,866.0	0.50	156.80	5,865.5	9.5	7.1	9.5	0.76	-0.11	
5,956.0	0.90	174.10	5,955.5	8.5	7.3	8.5	0.50	0.44	

# Directional Plus

## Survey Report

<b>Company:</b>	EnCana Oil & Gas (USA) Inc	<b>Local Co-ordinate Reference:</b>	Well Schwartz 2-10D
<b>Project:</b>	S. Piceance	<b>TVD Reference:</b>	WELL @ 6095.0ft (Xtreme 7)
<b>Site:</b>	NWSE Sec2-T7S-R92W (J2E)	<b>MD Reference:</b>	WELL @ 6095.0ft (Xtreme 7)
<b>Well:</b>	Schwartz 2-10D	<b>North Reference:</b>	True
<b>Wellbore:</b>	Vh	<b>Survey Calculation Method:</b>	Minimum Curvature
<b>Design:</b>	Vh	<b>Database:</b>	EDM 2003.21 US Multi User Db

Survey									
Measured Depth (ft)	Inclination (°)	Azimuth (°)	Vertical Depth (ft)	+N/-S (ft)	+E/-W (ft)	Vertical Section (ft)	Dogleg Rate (°/100ft)	Build Rate (°/100ft)	Formations / Comments
6,047.0	1.40	189.70	6,046.4	6.6	7.2	6.6	0.64	0.55	
6,138.0	2.30	196.60	6,137.4	3.8	6.5	3.8	1.02	0.99	
6,228.0	3.60	212.60	6,227.3	-0.3	4.4	-0.3	1.70	1.44	
6,319.0	4.00	215.00	6,318.1	-5.3	1.1	-5.3	0.47	0.44	
6,382.0	4.00	215.90	6,380.9	-8.9	-1.5	-8.9	0.10	0.00	Last DP Survey @ 6382' MD

Targets									
Target Name	Dip Angle (°)	Dip Dir. (°)	TVD (ft)	+N/-S (ft)	+E/-W (ft)	Northing (ft)	Easting (ft)	Latitude	Longitude
- hit/miss target									
- Shape									
Schwartz 2-10D (J2E) B	0.00	358.66	6,362.0	0.0	0.0	1,604,506.38	2,398,253.70	39° 28' 25.53 N	107° 37' 54.690 W
- survey misses target center by 7.9ft at 6362.6ft MD (6361.5 TVD, -7.8 N, -0.7 E)									
- Circle (radius 50.0)									

Survey Annotations					
Measured Depth (ft)	Vertical Depth (ft)	Local Coordinates		Comment	
		+N/-S (ft)	+E/-W (ft)		
6,382.0	6,380.9	-8.9	-1.5	Last DP Survey @ 6382' MD	

Checked By: \_\_\_\_\_ Approved By: \_\_\_\_\_ Date: \_\_\_\_\_