

HALLIBURTON

WILLIAMS PRODUCTION RMT INC - EBUS

**KP 333-21
MAMM CREEK
Garfield County , Colorado**

Cement Surface Casing
13-Sep-2011

Job Site Documents

The Road to Excellence Starts with Safety

Sold To #: 300721	Ship To #: 2874320	Quote #:	Sales Order #: 8420335
Customer: WILLIAMS PRODUCTION RMT INC - EBUS	Customer Rep: DUNIHO, AL		
Well Name: KP	Well #: 333-21	API/UWI #: 05-045-20274	
Field: MAMM CREEK	City (SAP): SILT	County/Parish: Garfield	State: Colorado
Lat: N 39.51 deg. OR N 39 deg. 30 min. 37.76 secs.	Long: W 107.557 deg. OR W -108 deg. 26 min. 33.666 secs.		
Contractor: CYCLONE 30	Rig/Platform Name/Num: CYCLONE 30		
Job Purpose: Cement Surface Casing			
Well Type: Development Well	Job Type: Cement Surface Casing		
Sales Person: KOHL, KYLE	Srv Supervisor: TRIPLETT, MICHEAL	MBU ID Emp #: 447908	

Job Personnel

HES Emp Name	Exp Hrs	Emp #	HES Emp Name	Exp Hrs	Emp #	HES Emp Name	Exp Hrs	Emp #
DEUSSEN, EDWARD Eric	4	485182	HARDRICK, RAYMOND Frank	4	391324	SPARKS, CLIFFORD Paul	4	502476
TRIPLETT, MICHEAL Anthony	4	447908						

Equipment

HES Unit #	Distance-1 way	HES Unit #	Distance-1 way	HES Unit #	Distance-1 way	HES Unit #	Distance-1 way
10567589C	60 mile	10784080	60 mile	10804579	60 mile	10951246	60 mile
10995027	60 mile						

Job Hours

Date	On Location Hours	Operating Hours	Date	On Location Hours	Operating Hours	Date	On Location Hours	Operating Hours
09/13/3011	3	1	09/14/2011	1	0			

TOTAL Total is the sum of each column separately

Job

Formation Name	Top	Bottom	Called Out	Date	Time	Time Zone
Formation Depth (MD)			On Location	13 - Sep - 2011	16:00	MST
Form Type		BHST	Job Started	13 - Sep - 2011	21:00	MST
Job depth MD	1080. ft	Job Depth TVD	Job Completed	13 - Sep - 2011	22:49	MST
Water Depth		Wk Ht Above Floor	Departed Loc	13 - Sep - 2011	23:49	MST
Perforation Depth (MD)	From	To		14 - Sep - 2011	01:00	MST

Well Data

Description	New / Used	Max pressure psig	Size in	ID in	Weight lbm/ft	Thread	Grade	Top MD ft	Bottom MD ft	Top TVD ft	Bottom TVD ft
-------------	---------------	-------------------------	------------	----------	------------------	--------	-------	--------------	--------------------	------------------	---------------------

Sales/Rental/3rd Party (HES)

Description	Qty	Qty uom	Depth	Supplier
PLUG,CMTG,TOP,9 5/8,HWE,8.16 MIN/9.06 MA	1	EA		

Tools and Accessories

Type	Size	Qty	Make	Depth	Type	Size	Qty	Make	Depth	Type	Size	Qty	Make
Guide Shoe					Packer					Top Plug			
Float Shoe					Bridge Plug					Bottom Plug			
Float Collar					Retainer					SSR plug set			
Insert Float										Plug Container			
Stage Tool										Centralizers			

Miscellaneous Materials

Gelling Agt	Conc	Surfactant	Conc	Acid Type	Qty	Conc	%
Treatment Fld	Conc	Inhibitor	Conc	Sand Type	Size	Qty	

Fluid Data

Stage/Plug #: 1	Fluid Name	Qty	Qty uom	Mixing Density lbm/gal	Yield ft3/sk	Mix Fluid Gal/sk	Rate bbl/min	Total Mix Fluid Gal/sk
Fluid #	Stage Type							

Stage/Plug #: 1									
Fluid #	Stage Type	Fluid Name	Qty	Qty uom	Mixing Density lbm/gal	Yield ft ³ /sk	Mix Fluid Gal/sk	Rate bbl/min	Total Mix Fluid Gal/sk
1	Water Spacer		20.00	bbl	8.34	.0	.0	.0	
2	Tail Cement	VERSACEM (TM) SYSTEM (452010)	305.0	sacks	12.8	2.11	11.75		11.75
11.75 Gal		FRESH WATER							
3	Displacement Fluid		80.00	bbl	8.34	.0	.0	.0	
Calculated Values		Pressures		Volumes					
Displacement	80.1	Shut In: Instant		Lost Returns	0	Cement Slurry	114.6	Pad	
Top Of Cement	SURFACE	5 Min		Cement Returns	20	Actual Displacement	80.1	Treatment	
Frac Gradient		15 Min		Spacers	20	Load and Breakdown		Total Job	215
Rates									
Circulating	16	Mixing	8	Displacement	10	Avg. Job	11		
Cement Left In Pipe	Amount	44 ft	Reason	Shoe Joint					
Frac Ring # 1 @	ID	Frac ring # 2 @	ID	Frac Ring # 3 @	ID	Frac Ring # 4 @	ID		
The Information Stated Herein Is Correct				Customer Representative Signature					

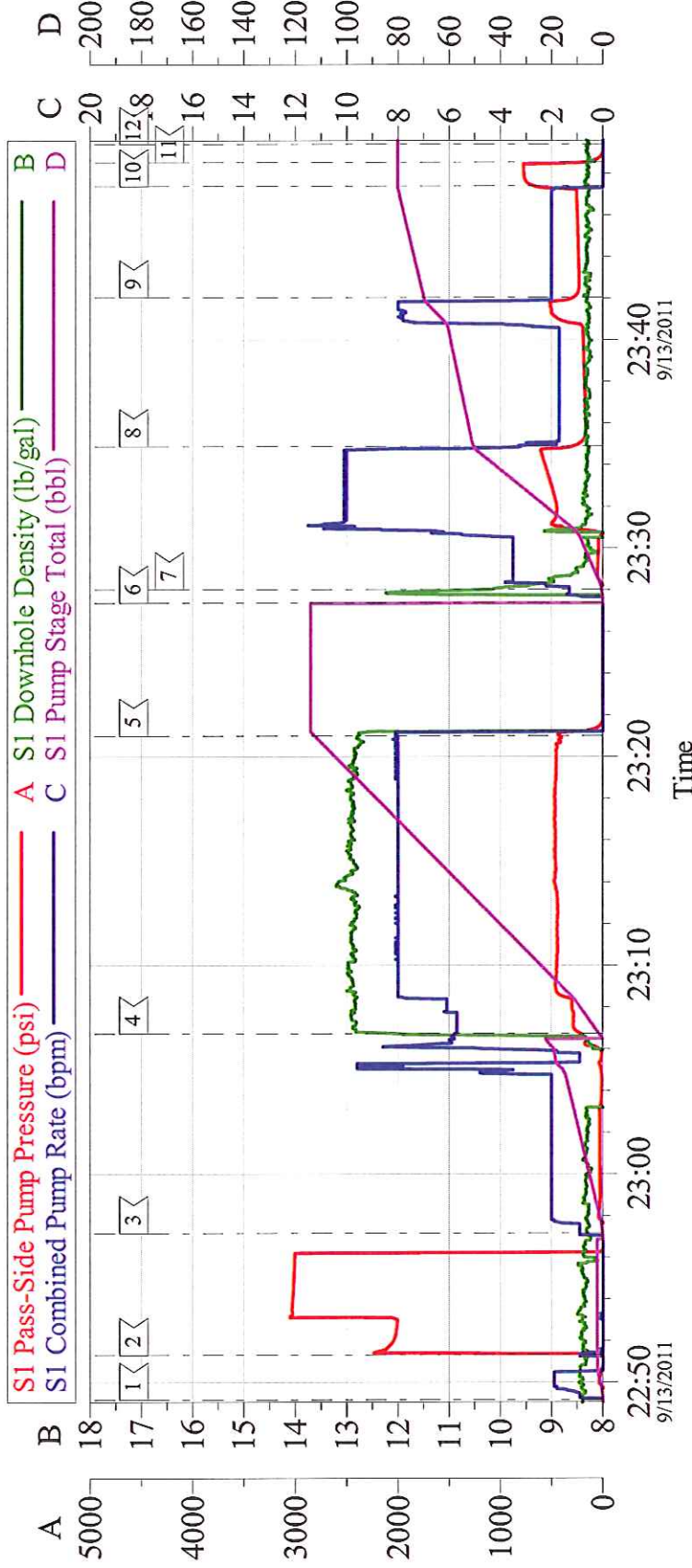
The Road to Excellence Starts with Safety

Sold To #: 300721	Ship To #: 2874320	Quote #:	Sales Order #: 8420335
Customer: WILLIAMS PRODUCTION RMT INC - EBUS	Customer Rep: DUNIHO, AL		
Well Name: KP	Well #: 333-21	API/UWI #: 05-045-20274	
Field: MAMM CREEK	City (SAP): SILT	County/Parish: Garfield	State: Colorado
Legal Description:			
Lat: N 39.51 deg. OR N 39 deg. 30 min. 37.76 secs.		Long: W 107.557 deg. OR W -108 deg. 26 min. 33.666 secs.	
Contractor: CYCLONE 30	Rig/Platform Name/Num: CYCLONE 30		
Job Purpose: Cement Surface Casing	Ticket Amount:		
Well Type: Development Well	Job Type: Cement Surface Casing		
Sales Person: KOHL, KYLE	Srv Supervisor: TRIPLETT, MICHEAL	MBU ID Emp #: 447908	

Activity Description	Date/Time	Cht #	Rate bbl/min	Volume bbl		Pressure psig		Comments
				Stage	Total	Tubing	Casing	
Call Out	09/13/2011 16:00							
Pre-Convoy Safety Meeting	09/13/2011 18:15							
Crew Leave Yard	09/13/2011 18:30							
Arrive At Loc	09/13/2011 21:00							RIG STILL RUNNING CASING SPOTTED EQUIPMENT AND STAYED CLEAR OF RIG OPERATIONS.
Assessment Of Location Safety Meeting	09/13/2011 21:10							
Other	09/13/2011 21:15							SPOT EQUIPMENT, 1 RCM PUMP TRUCK, 1 660
Pre-Rig Up Safety Meeting	09/13/2011 21:30							GO OVER JSA AND HAVE CREW SIGN.
Rig-Up Equipment	09/13/2011 21:35							
Pre-Job Safety Meeting	09/13/2011 22:35							GO OVER JOB PROCEDURES AND SAFETY INFORMATION.
Start Job	09/13/2011 22:49							TD:1080', TP:1062', SJ:44', MW:9.3 PPG, CASING: 9.625 32.3#, OH: 13.5", YP: PV: TEMP: , MUD REPORT LEFT IN PACKET.
Test Lines	09/13/2011 22:51						3000.0	PRESSURE TEST PUMPS AND LINE STARTED AT PSI, ENDED AT PSI, LOST PSI IN TWO MINUTES.

Activity Description	Date/Time	Cht #	Rate bbl/min	Volume bbl		Pressure psig		Comments
				Stage	Total	Tubing	Casing	
Pump Spacer	09/13/2011 22:57		6	20			300.0	FRESH WATER
Pump Tail Cement	09/13/2011 23:06		8	114.6			470.0	305 SACKS MIXED @ 12.8, 2.11 YIELD, 11.75 GAL/SACK
Shutdown	09/13/2011 23:21							
Drop Top Plug	09/13/2011 23:27							VERIFY PLUG LEFT
Pump Displacement	09/13/2011 23:28		10	80.1			563.0	FRESHWATER, WASH UP ON TOP OF PLUG PER COMPNAY REP. HAD TO SLOWRATE DUE TO CELLAR OVER FLOWING FROM CELLAR PUMP NOT KEEPING UP.
Slow Rate	09/13/2011 23:42		2	70.1			245.0	SLOWED RATE LAST 10BBLs OF DISPLACEMENT
Bump Plug	09/13/2011 23:47			80.1			270.0	BUMP PLUG AND WENT 600PSI OVER TO 790PSI
Check Floats	09/13/2011 23:48							FLOATS HELD
End Job	09/13/2011 23:49							HAD GOOD CIRCULATION THROUGHOUT JOB.GOT CEMENT BACK WITH 60 BBLS OF DISPLACEMENT AWAY, GOT 20 BBLS OF CEMENT TO SURFACE. 100#'S OF SUGAR USED. NOADDITIONAL HOURS CHARGED.
Post-Job Safety Meeting (Pre Rig-Down)	09/13/2011 23:50							
Rig-Down Equipment	09/14/2011 00:00							
Pre-Convoy Safety Meeting	09/14/2011 00:55							
Crew Leave Location	09/14/2011 01:00							THANKS FOR USING HALLIBURTON MIKE TRIPLETT AND CREW

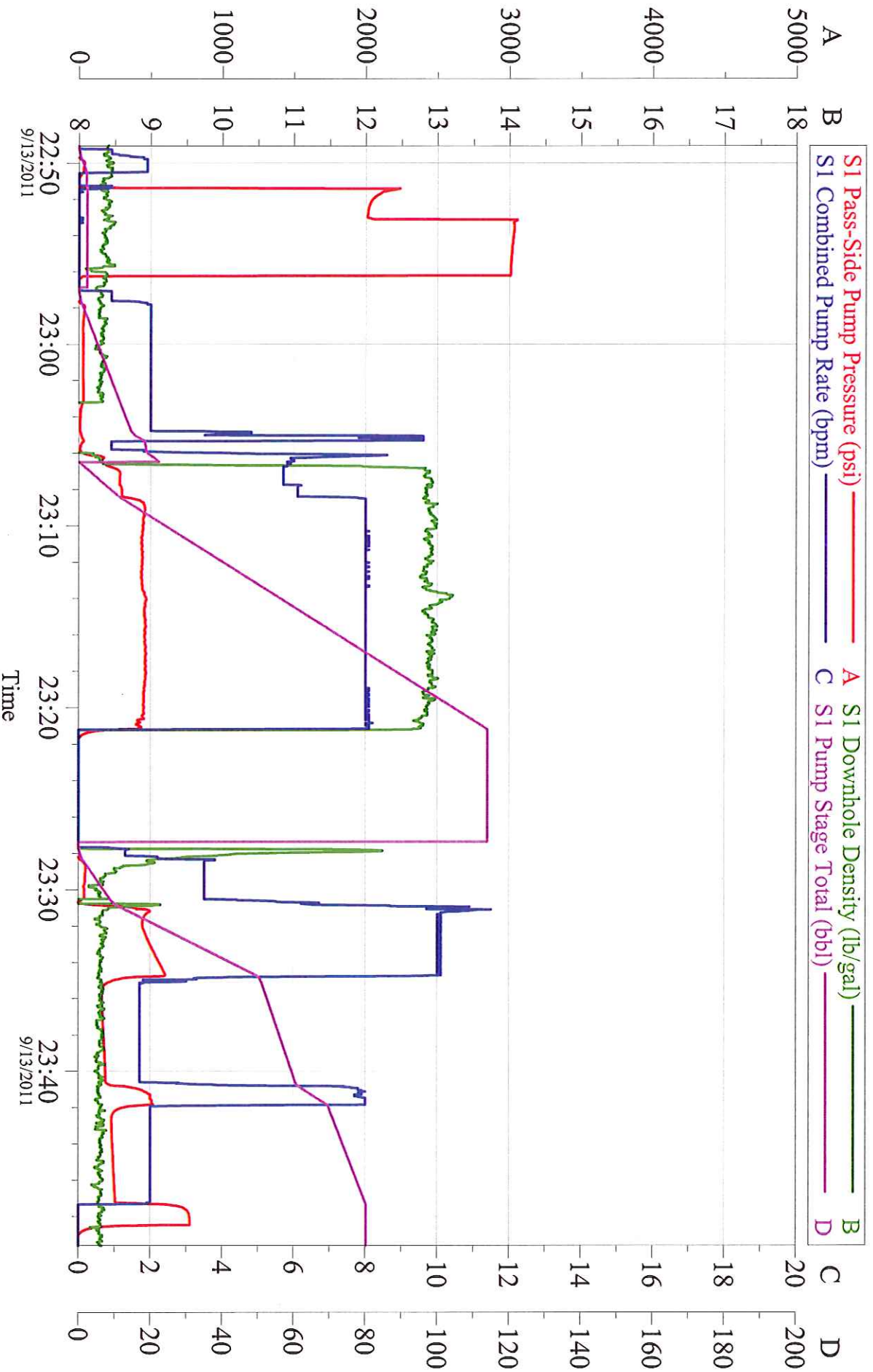
WILLIAMS SURFACE KP 333-21



Local Event Log					
1	START JOB	22:49:09	2	PRESSURE TEST	22:51:18
3	START FRESHWATER SPACER	22:57:10	4	START TAIL CEMENT	23:06:44
5	SHUTDOWN	23:21:00	6	DROP PLUG	23:27:23
7	START DISPLACEMENT	23:28:01	8	SLOWRATE	23:34:54
9	SLOWRATE	23:42:03	10	BUMP PLUG	23:47:24
11	CHECK FLOATS	23:48:33	12	END JOB	23:49:26

Customer: WILLIAMS	Job Date: 13-Sep-2011	Sales Order #: 8420335
Well Description: KP 333-21	JOB TYPE: SURFACE	COMPANY REP: LARRY NICHOLS
ADC USED: YES	SERVICE SUPERVISOR: MIKE TRIPLETT	ELITE/OPERATOR 3/ ED DEUSSEN

WILLIAMS SURFACE KP 333-21



Customer: WILLIAMS
Well Description: KP 333-21
ADC USED: YES

Job Date: 13-Sep-2011
JOB TYPE: SURFACE
SERVICE SUPERVISOR: MIKE TRIPLETT

Sales Order #: 8420335
COMPANY REP: LARRY NICHOLS
ELITE/OPERATOR 3/ ED DEUSSEN

OptiCem v6.4.9
14-Sep-11 00:14