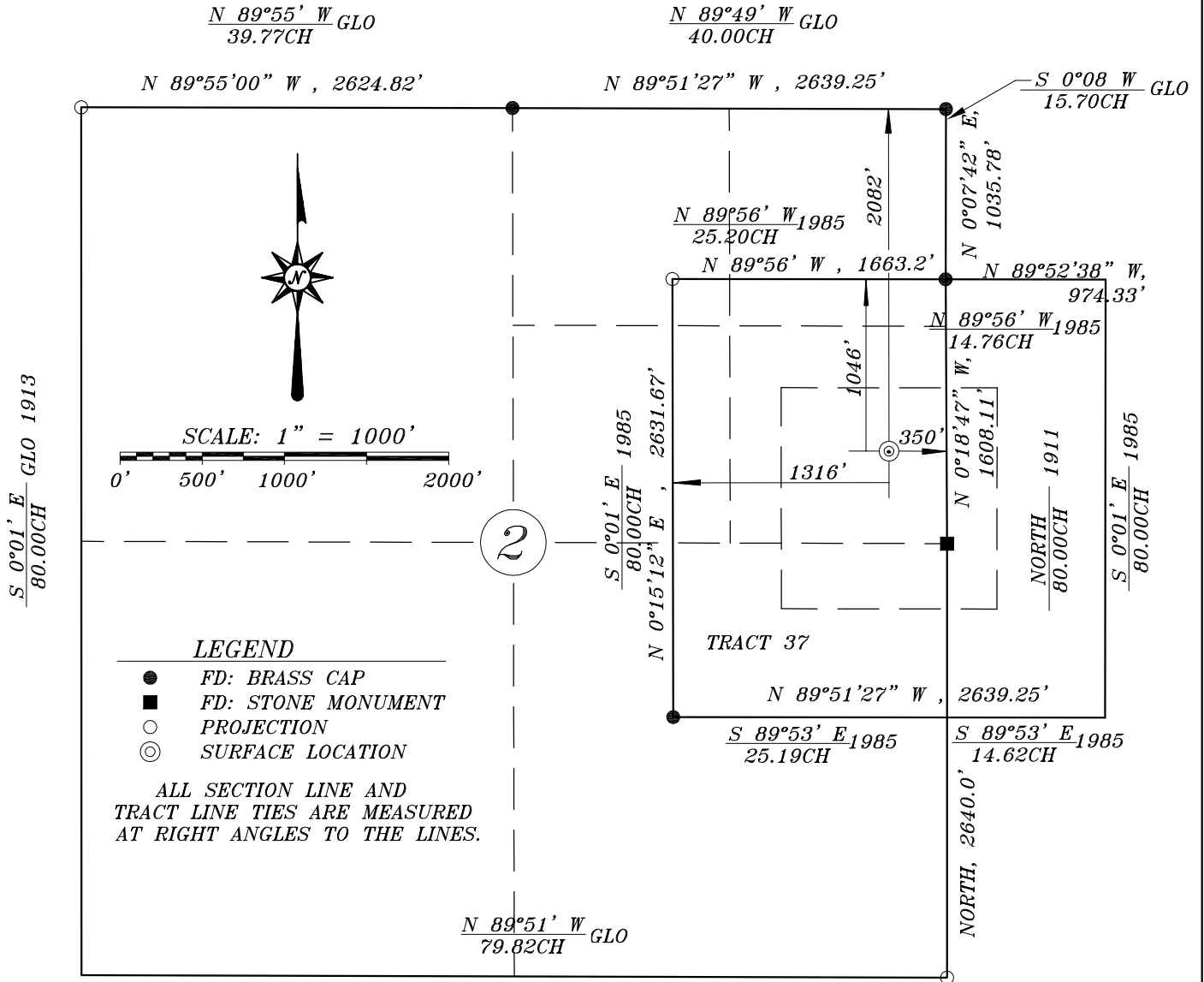


SECTION 2, T 10 N, R 89 W, 6TH P.M., MOFFAT COUNTY, COLORADO



NOTE:

BASIS OF BEARING IS TRUE
NORTH AS DETERMINED BY G.P.S.
USING THE HERE KEY FOR INITIAL
CONTROL. THE PDOP FOR THE
INITIAL CONTROL WAS OBSERVED
BY DAN SIEK TO BE < 3.0 ON
MAY 17, 2012

*SURFACE USE OF LAND IS
HIGH MOUNTAIN MEADOW
RANGELAND.*

SURVEYOR'S CERTIFICATE:

I, DANIEL A. SIEK, OF CASPER, WYOMING DO HEREBY CERTIFY THAT IN ACCORDANCE WITH A REQUEST FROM DUNCAN SHEPHERD OF DENVER, COLORADO, FOR PETROLEUM RESOURCE MGMT, I MADE A SURVEY IN THE MONTH OF MAY, 2012, FOR THE LOCATION AND ELEVATION OF THE ABOVE WELL SITE LOCATED IN THE SE/4 OF THE NE/4 OF SECTION 2, TOWNSHIP 10 NORTH, RANGE 89 WEST OF THE 6TH PRINCIPAL MERIDIAN, MOFFAT COUNTY, COLORADO.



WELL LOCATION PLAT

PETROLEUM RESOURCE MANAGEMENT
PRM SHEEHAN 2 WELL NO. 4-2
LOCATED IN THE SE/4 OF THE NE/4,
SECTION 2, T 10 N, R 89 W, 6TH P.M.,
MOFFAT COUNTY, COLORADO

PREPARED BY SIEK SURVEYING SERVICE
CASPER, WYOMING 307-266-6829
DATE: 05-18-12 REV: 06-22-12
JOB NO. 37-12-#4-2 WL