

PROPOSED WELLBORE SPACING UNIT

T6N, R66W, 6th P.M.

1998 3 1/4" Alum.
Cap. in Monument Box
0.5' Below Ground
Lat: 40.494914°
Long: 104.811531°

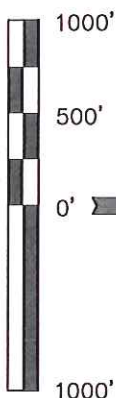
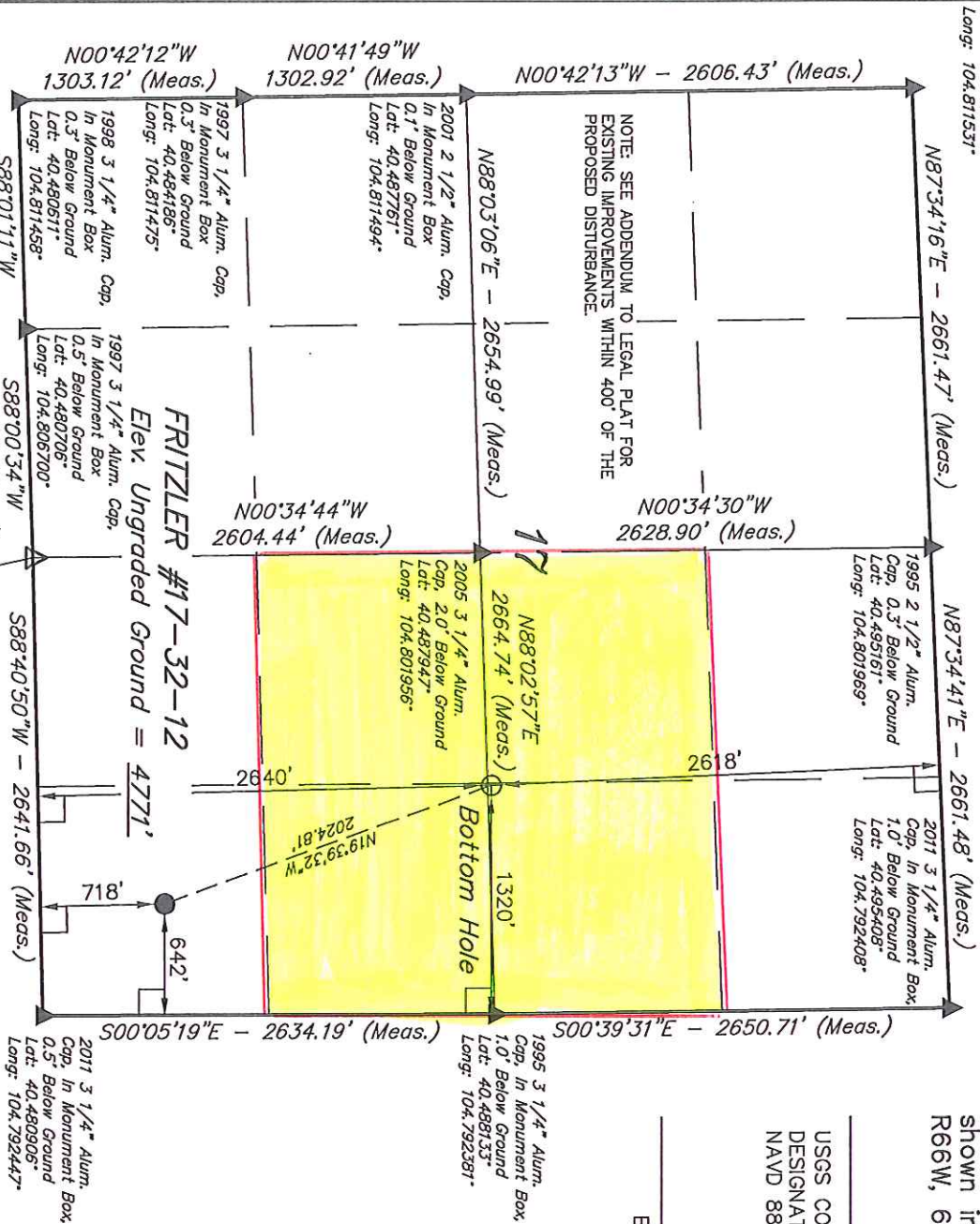
GREAT WESTERN OIL & GAS COMPANY
Well location, FRITZLER #17-32-12, located as shown in the SE 1/4 SE 1/4 of Section 17, T6N, R66W, 6th P.M., Weld County, Colorado.

BASIS OF ELEVATION

USGS COOPERATIVE BASE NETWORK CONTROL STATION, DESIGNATION 'VERMILYEA'. NGS DATA SHEET LISTS THE NAVD 88 ELEVATION AS BEING 5026 FEET

BASIS OF BEARINGS

BASES OF BEARINGS IS A G.P.S. OBSERVATION.



CERTIFICATE

THIS IS TO CERTIFY THAT THE ABOVE PLAT WAS PREPARED FROM FIELD NOTES OF ACTUAL SURVEYS MADE BY ME OR UNDER MY SUPERVISION AND THAT THE SAME ARE TRUE AND CORRECT TO THE BEST OF MY KNOWLEDGE AND BELIEF.

REGISTERED AND SURVEYOR
REGISTRATION NO. 17492
STATE OF COLORADO
05-17-12

REVISED: 05-17-12

UTIAH ENGINEERING & LAND SURVEYING
85 SOUTH 200 EAST - VERNAL, UTAH 84078
(435) 789-1017

SCALE 1" = 1000'

PARTY D.N. A.G. J.J.

WEATHER WARM

DATE SURVEYED:	DATE DRAWN:
04-17-12	04-25-12
REFERENCES	
G.L.O. PLAT	
FILE	
GREAT WESTERN OIL & GAS COMPANY	

PDOP = 1.0

NAD 83 (TARGET BOTTOM HOLE)

Latitude = 40.2917.16° (40.488100)
Longitude = 104.4749.65° (104.797125)

NAD 27 (SURFACE LOCATION)
Latitude = 40.2858.26° (40.482850)
Longitude = 104.4741.05° (104.794736)

NAD 27 (SURFACE LOCATION)
Latitude = 40.2858.33° (40.482869)
Longitude = 104.4739.16° (104.794211)

LEGEND:
= 90° SYMBOL
= PROPOSED WELL HEAD
= SECTION CORNERS LOCATED
= SECTION CORNERS RE-ESTABLISHED.
(Not Set on Ground.)