

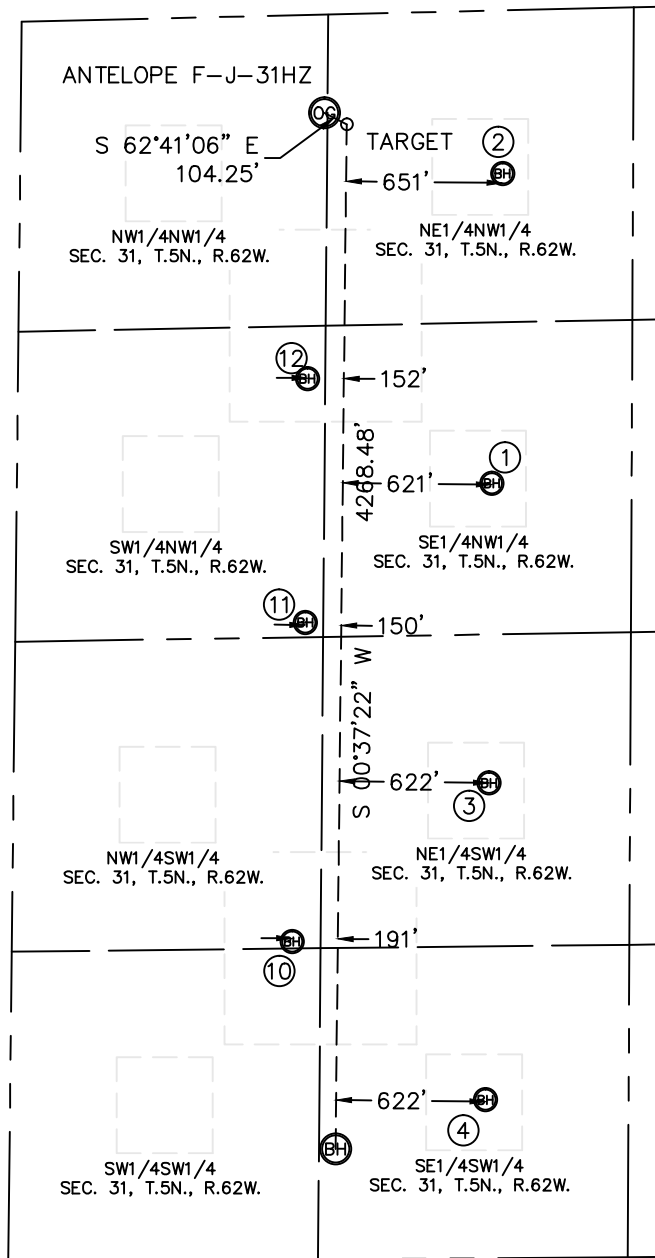


Lat40°, Inc. 1635 Foxtrail Drive, Suite 325 Loveland, CO 970-776-3321

# SITE SKETCH WITH BOTTOM HOLES

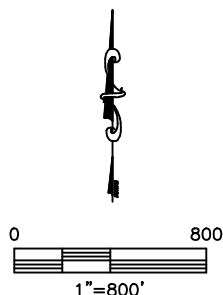
ANTELOPE F-J-31HZ

SECTION: 31  
TOWNSHIP: 5N  
RANGE: 62W



- ① ANTELOPE 22-31 DIRECTIONAL SURVEY
- ② ANTELOPE 21-31 DIRECTIONAL SURVEY
- ③ ANTELOPE 23-31 PLANNED LOCATION
- ④ ANTELOPE 24-31 PLANNED LOCATION
- ⑩ ANTELOPE I-31 DIRECTIONAL SURVEY
- ⑪ ANTELOPE H-31 DIRECTIONAL SURVEY
- ⑫ ANTELOPE G-31 DIRECTIONAL SURVEY

\*BOTTOM HOLE LOCATIONS HAVE BEEN CALCULATED FROM THE PROPOSED WELL FOOTAGES AND THE DIRECTIONAL SURVEY BY CATHEDRAL ENGERGY SERVICES WHERE AVAILABLE.



DATE: 7/12/2012  
PROJECT#: 2012071