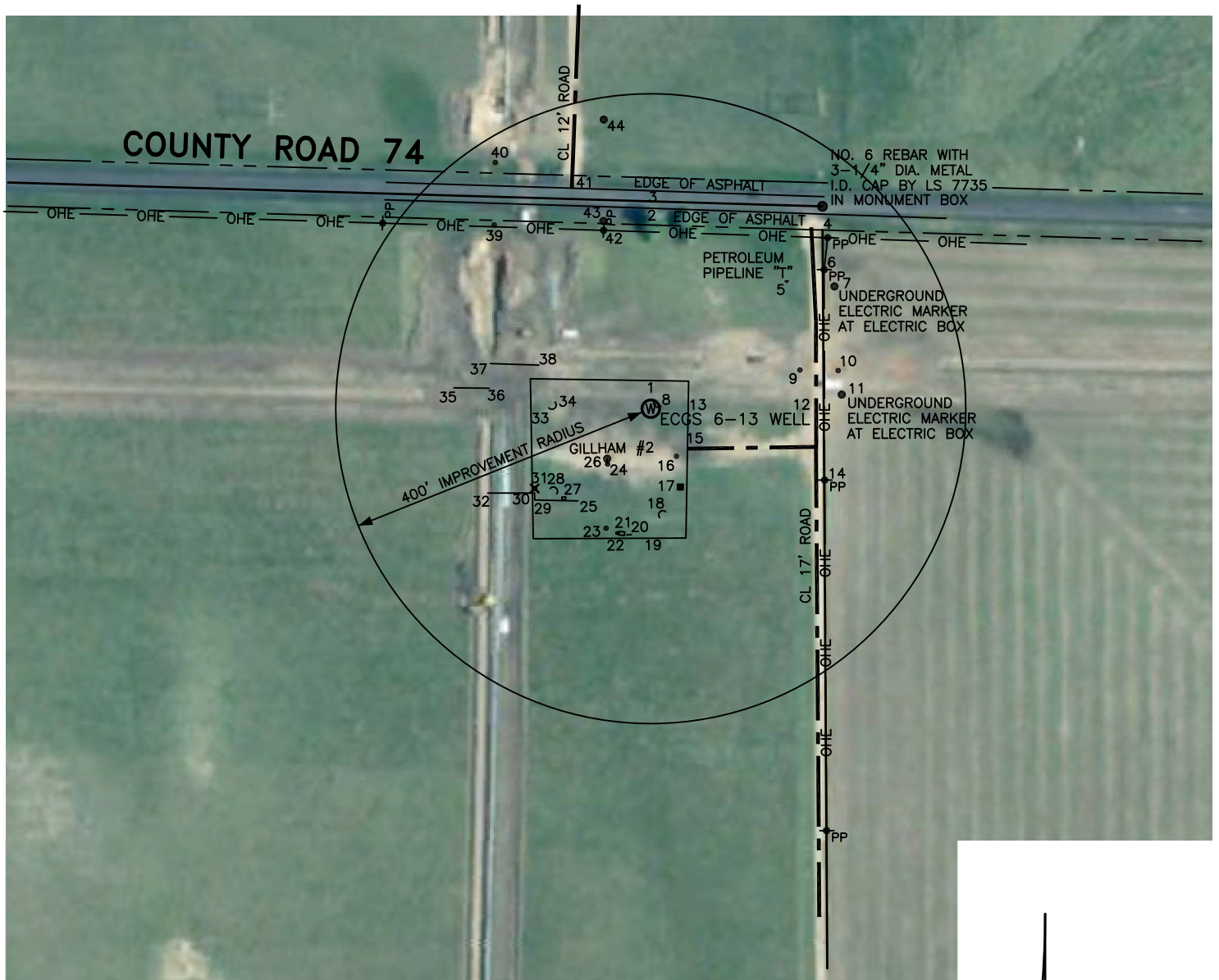


# IMPROVEMENTS



- 1 EDGE OF PAD N0°51'35"E 36'
- 2 EDGE OF ASPHALT N1°56'25"E 254'
- 3 EDGE OF ASPHALT N1°56'25"E 277'
- 4 POWER POLE N45°58'15"E 312'
- 5 PIPELINE "T" N46°48'15"E 237'
- 6 POWER POLE N51°14'25"E 282'
- 7 UNDERGROUND ELECTRIC MARKER N56°18'30"E 280'
- 8 ANCHOR N58°07'00"E 6'
- 9 GAS MARKER N75°26'10"E 196'
- 10 GAS MARKER N78°28'30"E 243'
- 11 UNDERGROUND ELECTRIC MARKER N85°45'15"E 243'
- 12 CL 17' ROAD N89°52'40"E 210'
- 13 EDGE OF PAD S89°00'45"E 47'
- 14 POWER POLE S67°41'15"E 239'
- 15 CL ENTRANCE S42°31'20"E 69'
- 16 EMERGENCY SHUT-DOWN SWITCH S28°23'20"E 69'
- 17 ELECTRIC METER BOX S20°43'45"E 106'
- 18 ANCHOR S5°01'20"E 132'
- 19 EDGE OF PAD S0°14'30"E 165'
- 20 ELECTRIC BOX S9°44'25"W 163'
- 21 SHED S13°12'45"W 160'
- 22 ANTENNA S15°07'30"W 164'
- 23 10" PVC PIPE S20°30'20"W 162'
- 24 6" PIPE S37°55'50"W 89'
- 25 6" PIPELINE TO UNDERGROUND S38°18'50"W 149'
- 26 GILLHAM #2 WELL S41°07'10"W 84'
- 27 CONC PAD W/PLASTIC COVER S43°55'55"W 156'
- 28 ANCHOR S50°02'50"W 157'
- 29 6" PIPELINE S51°48'30"W 188'
- 30 6" PIPELINE S54°01'05"W 182'
- 31 LIGHT POLE S55°31'35"W 179'
- 32 6" PIPELINE TO UNDERGROUND S62°39'35"W 233'
- 33 EDGE OF PAD S88°57'00"W 152'
- 34 ANCHOR N89°39'50"W 122'

- 35 6" PIPELINE TO UNDERGROUND N83°57'10"W 251'
- 36 6" PIPELINE TO UNDERGROUND N82°46'15"W 207'
- 37 6" PIPELINE TO UNDERGROUND N74°15'50"W 212'
- 38 6" PIPELINE TO UNDERGROUND N68°41'10"W 152'
- 39 GAS MARKER N40°25'20"W 307'
- 40 GAS MARKER N32°15'50"W 370'
- 41 CL 12' ROAD N19°42'20"W 297'
- 42 POWER POLE N14°48'40"W 234'
- 43 UNDERGROUND ELECTRIC MARKER N14°10'00"W 246'
- 44 UNDERGROUND ELECTRIC MARKER N9°14'30"W 372'

## LEGEND

- ⊙ FIELD SURVEYED WELL LOCATION
- == == == ROAD
- PP POWER POLE
- OHE — OVERHEAD POWER LINE



SCALE: 1" = 200'

200 100 0 200

SCALE IN FEET

## LEIBERT-McATEE & ASSOCIATES, INC.

P.O. BOX 442 615 SOUTH TENTH AVENUE  
STERLING, CO 80751 970-522-1960

FIELD DATE: 3-28-12	DWG DATE: 4-20-12	GPS OPERATOR: DARREN VEAL
ECGS 6-13	DWG NO. 374-12A	SHEET 2 OF 2