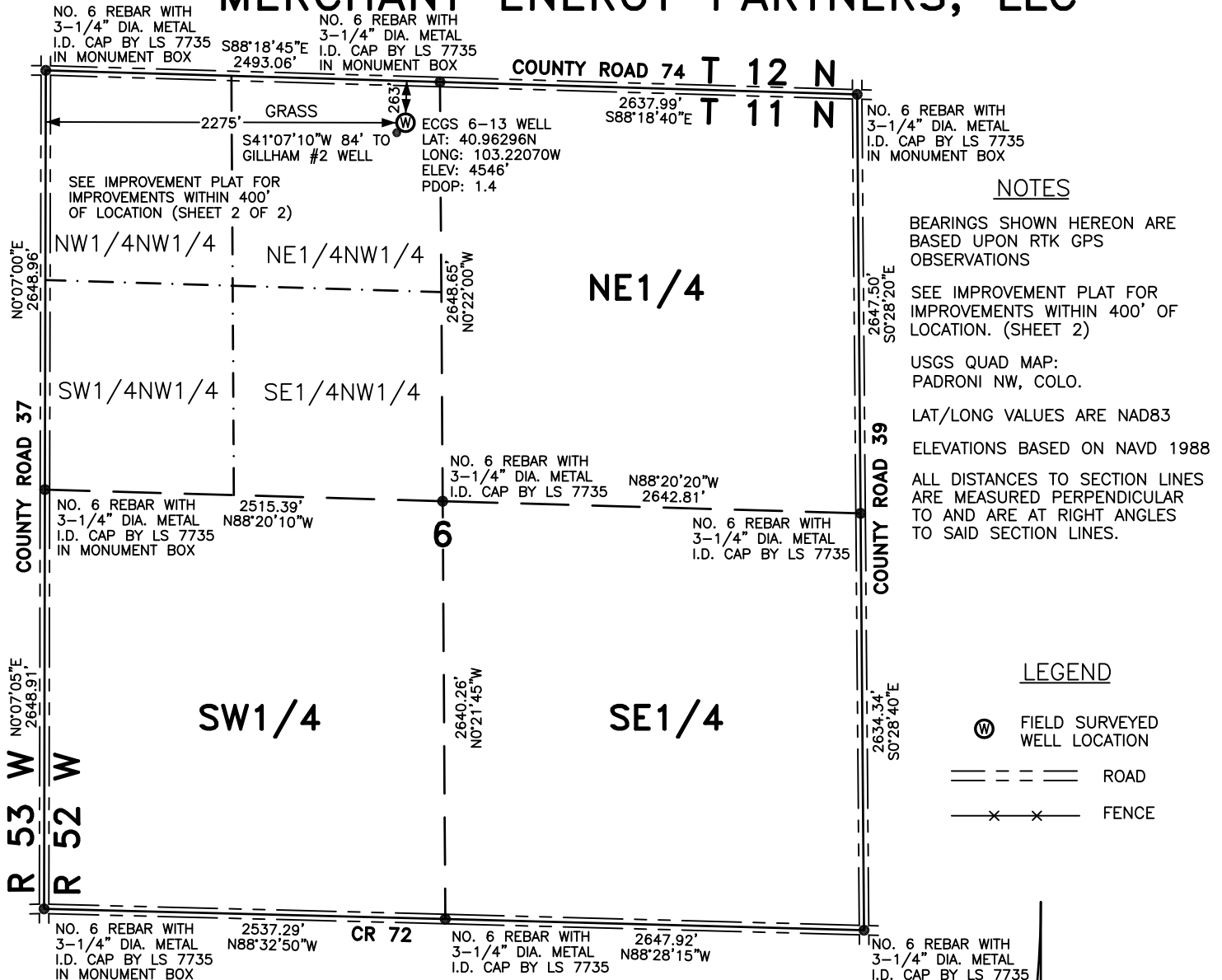


WELL LOCATION FOR MERCHANT ENERGY PARTNERS, LLC



THIS WELL LOCATION PLAT HAS BEEN PREPARED FOR MERCHANT ENERGY PARTNERS, LLC, TO LOCATE THE ECGS 6-13 WELL BEING 2275 FEET FROM THE WEST LINE AND 263 FEET FROM THE NORTH LINE IN THE NE1/4NW1/4 OF SECTION 6, TOWNSHIP 11 NORTH, RANGE 52 WEST OF THE 6TH P.M., LOGAN COUNTY, COLORADO. THE SURFACE ELEVATION AT THIS POINT IS 4546 FEET. THIS IS NOT A LAND SURVEY PLAT.



LEIBERT-McATEE & ASSOCIATES, INC.

P.O. BOX 442 615 SOUTH TENTH AVENUE
STERLING, CO 80751 970-522-1960

FIELD DATE: 3-28-12	DWG DATE: 4-20-12	GPS OPERATOR: DARREN VEAL
ECGS 6-13	DWG NO. 374-12	SHEET 1 OF 2