

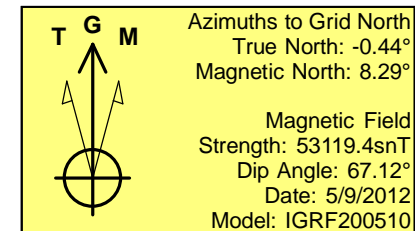
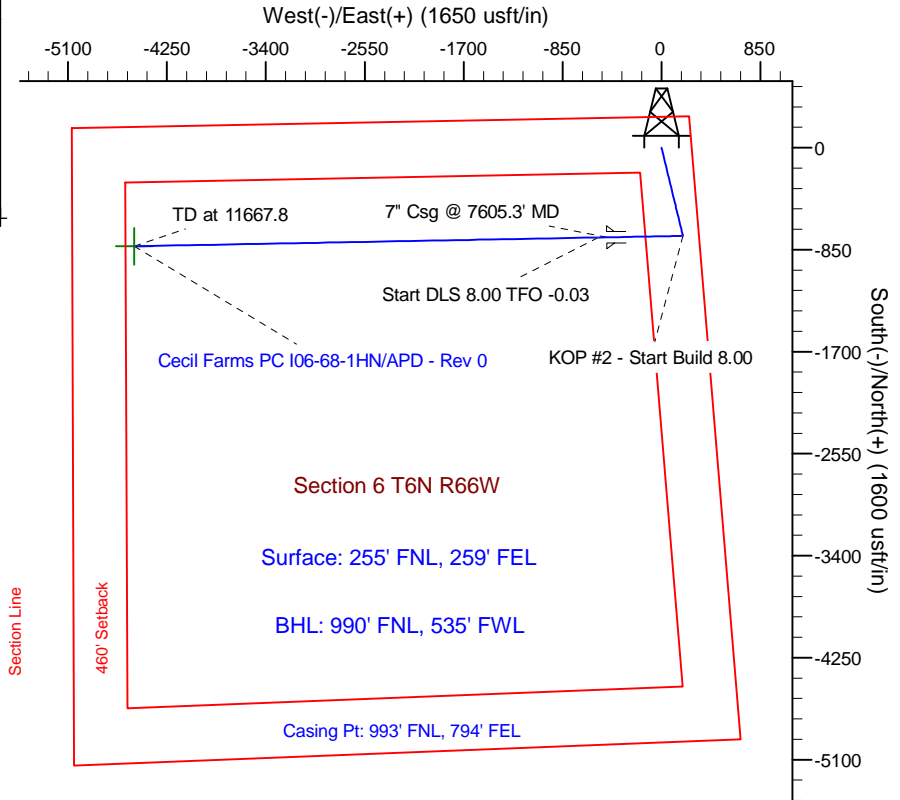
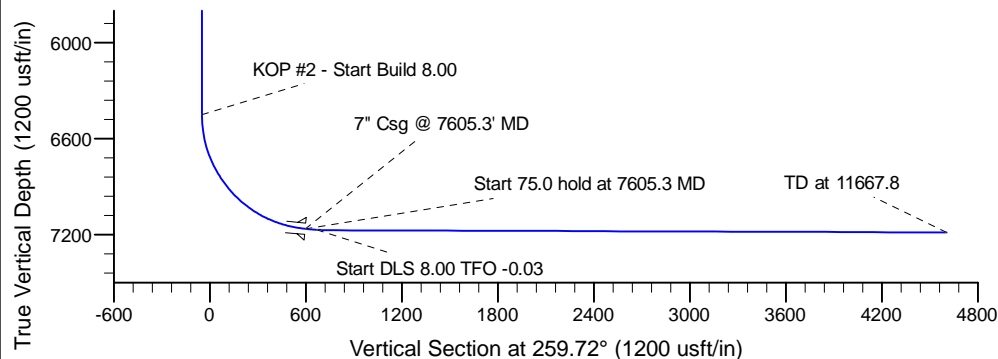
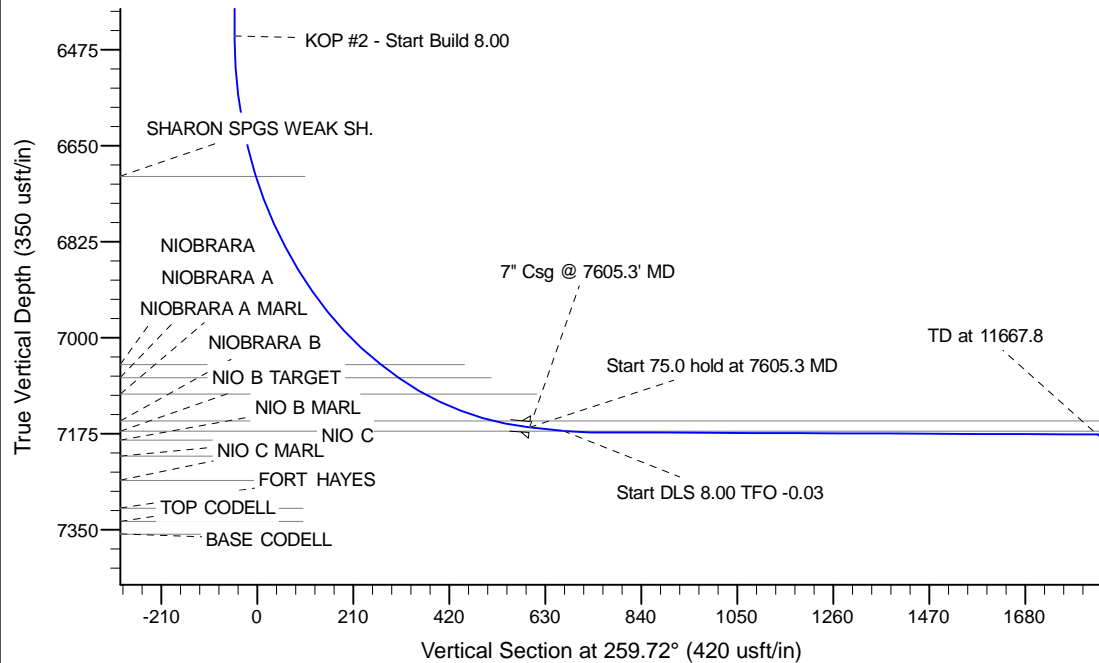
Project: Wattenberg Field
 Site: I (Sec.6-T06N-R66W) Weld County, CO
 Well: Cecil Farms PC I06-68-1HN
 Wellbore: Original Drilling
 Design: APD - Rev 0

Northern Region Drilling

Geodetic System: US State Plane 1983
 Datum: North American Datum 1983
 Ellipsoid: GRS 1980
 Zone: Colorado Northern Zone
 System Datum: Mean Sea Level

SECTION DETAILS

Sec	MD	Inc	Azi	TVD	+N/-S	+E/-W	Dleg	TFace	VSec	Target
1	0.0	0.00	0.00	0.0	0.0	0.0	0.00	0.00	0.0	
2	1500.0	0.00	0.00	1500.0	0.0	0.0	0.00	0.00	0.0	
3	2101.6	15.04	165.95	2094.7	-76.2	19.1	2.50	165.95	-5.2	
4	4416.5	15.04	165.95	4330.3	-658.8	164.9	0.00	0.00	-44.7	
5	5018.1	0.00	0.00	4925.0	-735.0	184.0	2.50	180.00	-49.9	
6	6542.8	0.00	0.00	6449.7	-735.0	184.0	0.00	0.00	-49.9	
7	7605.3	85.00	268.95	7163.2	-747.0	-469.7	8.00	268.95	595.4	
8	7680.3	85.00	268.95	7169.7	-748.3	-544.4	0.00	0.00	669.1	
9	7740.3	89.80	268.95	7172.5	-749.4	-604.3	8.00	-0.03	728.3	
10	11667.8	89.80	268.95	7186.1	-821.6	-4531.1	0.00	0.00	4605.0	Cecil Farms PC I06-68-1HN BHL 990'FNL, 535'FWL



WELL DETAILS: Cecil Farms PC I06-68-1HN

Ground Level: 4870.0		
Northing	Easting	Latitude
1434081.74	3190712.53	40.522930
		Longitude
		-104.813990

Plan: APD - Rev 0 (Cecil Farms PC I06-68-1HN/Original Drilling)

Created By: Carrie Willers Date: 10:05, May 10 2012

OK to submit with 2A as per Noble Drilling
5/10/2012 10:20