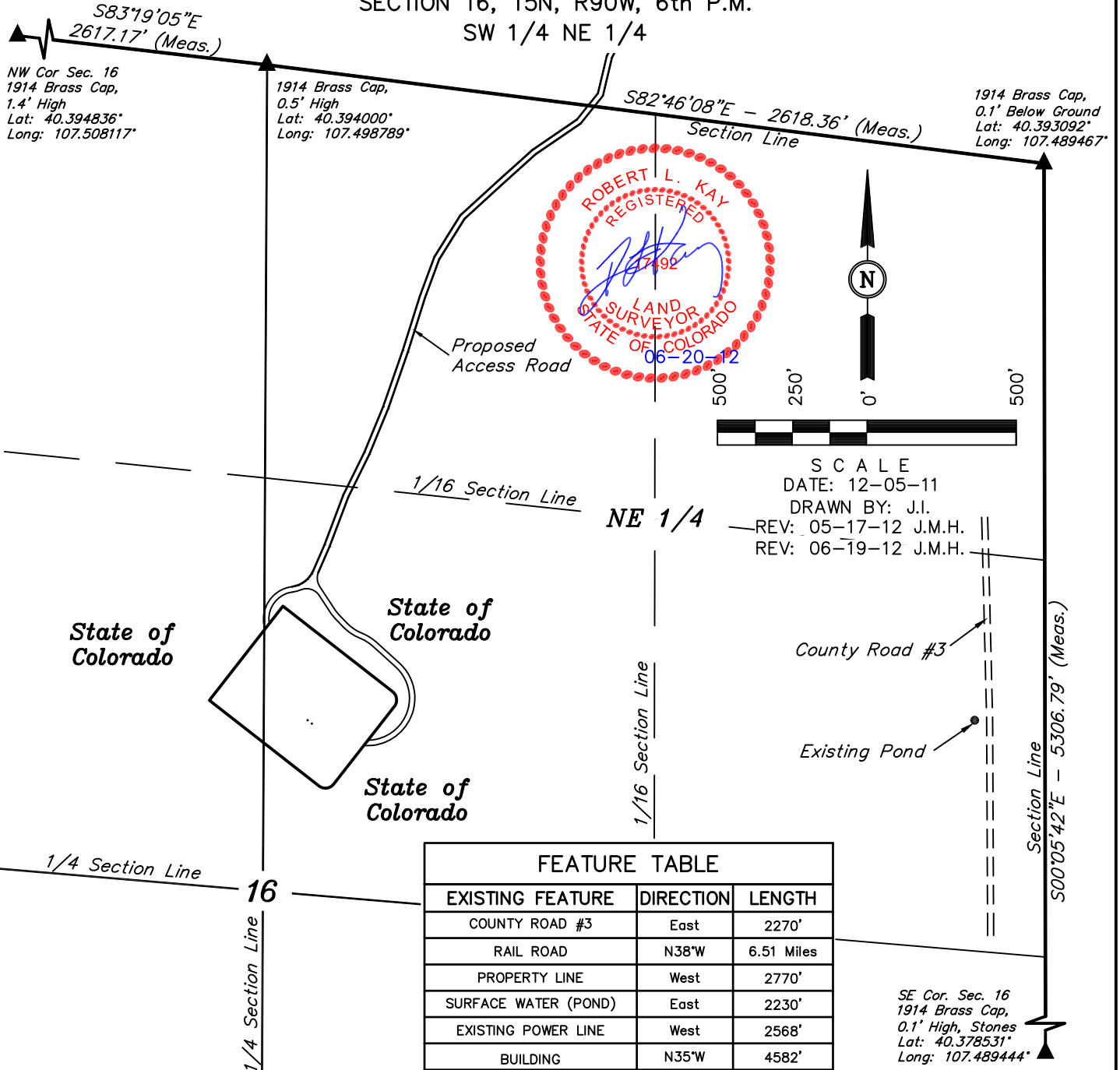


SWEPI LP

LOCATION DRAWING FOR

DEAL GULCH #1-16 & #2-16
SECTION 16, T5N, R90W, 6th P.M.
SW 1/4 NE 1/4

FIGURE #5



FEATURE TABLE

EXISTING FEATURE	DIRECTION	LENGTH
COUNTY ROAD #3	East	2270'
RAIL ROAD	N38°W	6.51 Miles
PROPERTY LINE	West	2770'
SURFACE WATER (POND)	East	2230'
EXISTING POWER LINE	West	2568'
BUILDING	N35°W	4582'

PLANT COMMUNITY

- ☐ DISTURBED GRASSLAND
- ☐ NATIVE GRASSLAND
- ☐ SHRUB LAND
- ☐ PLAINS RIPARIAN
- ☐ MOUNTAIN RIPARIAN
- ☐ FOREST LAND
- ☐ WETLANDS AQUATIC
- ☐ ALPINE
- ☐ OTHER (Describe): _____

CURRENT LAND USE

- CROP LAND: ☐ IRRIGATED ☐ DRY LAND ☐ IMPROVED PASTURE ☐ HAY MEADOW ☐ CRP
- NON-CROP LAND: ☐ RANGELAND ☐ TIMBER ☐ RECREATIONAL ☐ OTHER (Describe)
- SUBDIVIDED: ☐ INDUSTRIAL ☐ COMMERCIAL ☐ RESIDENTIAL

FUTURE LAND USE

- CROP LAND: ☐ IRRIGATED ☐ DRY LAND ☐ IMPROVED PASTURE ☐ HAY MEADOW ☐ CRP
- NON-CROP LAND: ☐ RANGELAND ☐ TIMBER ☐ RECREATIONAL ☐ OTHER (Describe)
- SUBDIVIDED: ☐ INDUSTRIAL ☐ COMMERCIAL ☐ RESIDENTIAL