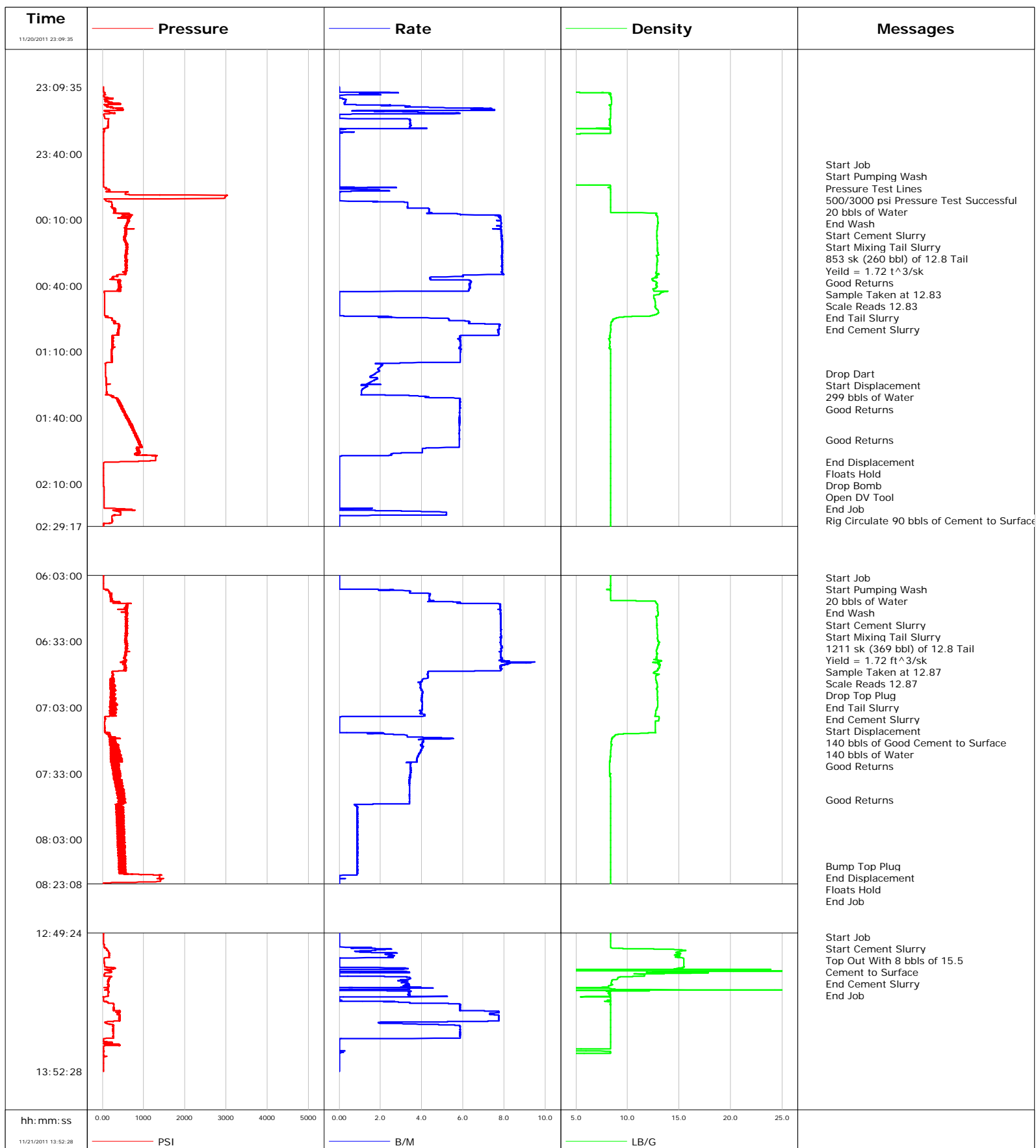


Well RGU 424-25-198
Field Ryan Gulch Unit
Engineer Jeff Eulberg
Country United States

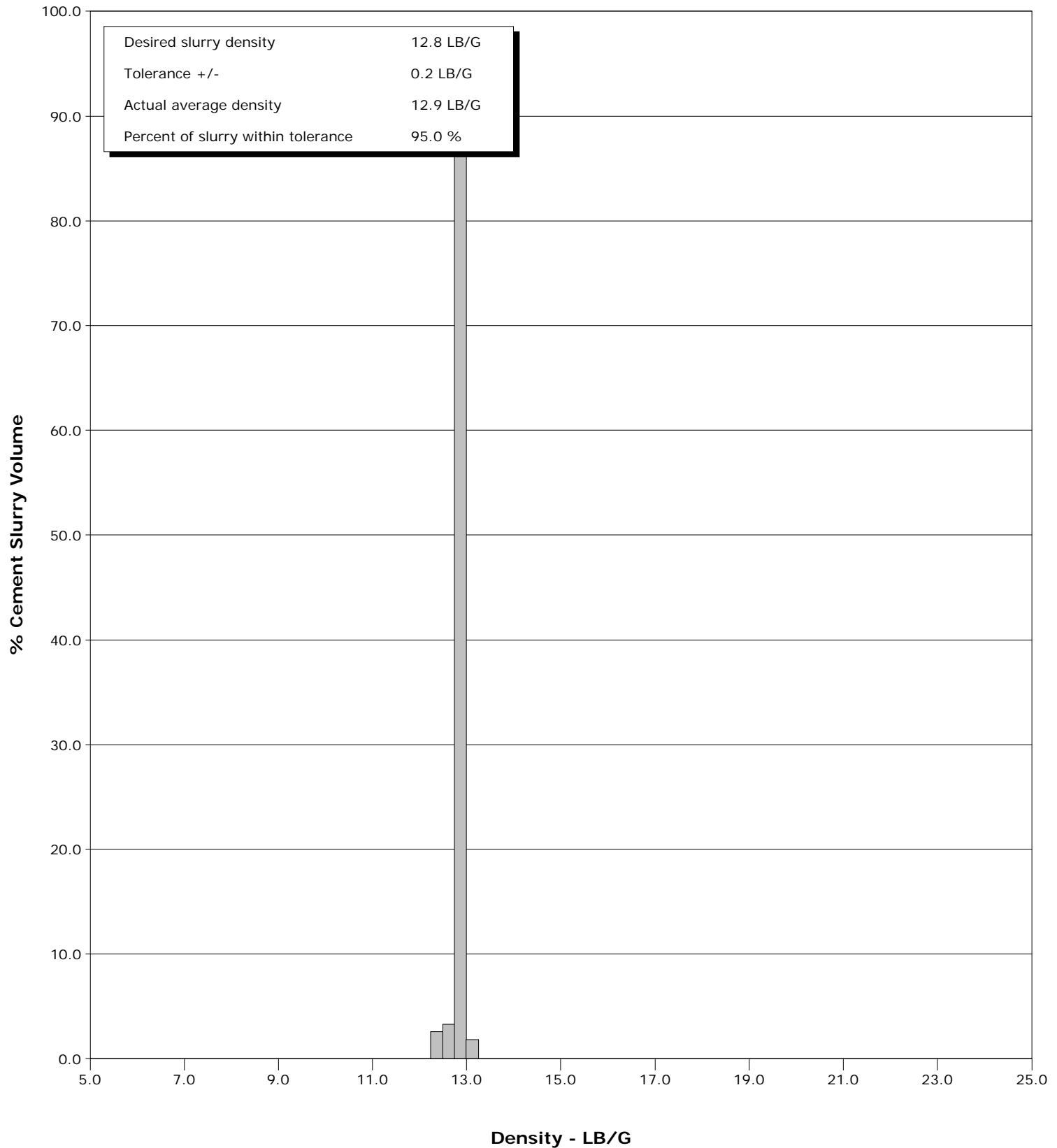
Client Williams
SIR No. 672668
Job Type 2 Stage Surface
Job Date 11-21-2011



Well RGU 424-25-198
Field Ryan Gulch Unit
Engineer Jeff Eulberg
Country United States

Client Williams
SIR No. 672668
Job Type 2 Stage Surface
Job Date 11-21-2011

Cement Slurry - 11/21/2011 00:11:00 to 11/21/2011 00:41:00



Cementing Service Report

					Customer Williams			Job Number 672668	
Well RGU 424-25-198			Location (legal)			Schlumberger Location Grand Junction		Job Start Nov/21/2011	
Field Ryan Gulch Unit		Formation Name/Type			Deviation deg	Bit Size in	Well MD 3899.0 ft		Well TVD 3899.0 ft
County Rio Blanco		State/Province Colorado			BHP psi	BHST degF	BHCT degF	Pore Press. Gradient lb/gal	
Well Master 0631332823		API/UWI							
Rig Name Frontier 10		Drilled For Gas		Service Via Land	Casing/Liner				
					Depth, ft	Size, in	Weight, lb/ft	Grade	Thread
Offshore Zone		Well Class New		Well Type Development	3899.0	9.6	36.0		BUTT
					0.0	0.0	0.0		
Drilling Fluid Type		Max. Density lb/gal	Plastic Viscosity cP		Tubing/Drill Pipe				
					T/D	Depth, ft	Size, in	Weight, lb/ft	Grade
Service Line Cementing		Job Type 2 Stage Surface							
Max. Allowed Tub. Press psi		Max. Allowed Ann. Press psi		WH Connection	Perforations/Open Hole				
					Top, ft	Bottom, ft	shot/ft	No. of Shots	Total Interval ft
Service Instructions					ft	ft			
					ft	ft			Diameter in
					ft	ft			
					Treat Down Casing	Displacement bbl	Packer Type		Packer Depth ft
					Tubing Vol. bbl	Casing Vol. bbl	Annular Vol. bbl		Openhole Vol. bbl
Casing/Tubing Secured <input type="checkbox"/>		1 Hole Vol. Circulated prior to Cement <input type="checkbox"/>			Casing Tools		Squeeze Job		
Lift Pressure psi					Shoe Type Guide		Squeeze Type		
Pipe Rotated <input type="checkbox"/>		Pipe Reciprocated <input type="checkbox"/>			Shoe Depth 3899.0 ft		Tool Type		
No. Centralizers		Top Plugs		Bottom Plugs	Stage Tool Type DV		Tool Depth ft		
Cement Head Type					Stage Tool Depth 1810.0 ft		Tail Pipe Size in		
Job Scheduled For Nov/21/2011		Arrived on Location Nov/21/2011		Leave Location Nov/21/2011	Collar Type Float		Tail Pipe Depth ft		
					Collar Depth 3856.0 ft		Sqz. Total Vol. bbl		
Date	Time 24-hr clock	Treating Pressure PSI	Flow Rate B/M	Density LB/G	Volume BBL	Solid Fraction NULL	Message		
11/20/2011	23:09:35	32	0.0	0.02	0.0	0.0			
11/20/2011	23:10:25	32	0.0	0.01	0.0	0.0			
11/20/2011	23:11:15	32	0.0	0.01	0.0	0.0			
11/20/2011	23:12:05	32	0.0	0.02	0.0	0.0			
11/20/2011	23:12:55	50	1.1	8.35	1.1	0.0			
11/20/2011	23:13:45	33	0.0	8.34	1.7	0.0			
11/20/2011	23:14:35	130	0.0	8.40	1.7	0.0			
11/20/2011	23:15:25	55	0.3	8.44	1.8	0.0			
11/20/2011	23:16:15	99	0.3	8.45	2.1	0.0			
11/20/2011	23:17:05	356	0.3	8.45	2.3	0.0			
11/20/2011	23:17:55	86	1.9	8.20	2.6	0.0			
11/20/2011	23:18:45	118	3.3	8.35	5.1	0.0			
11/20/2011	23:19:35	328	6.8	8.34	9.3	0.0			
11/20/2011	23:20:25	58	2.0	8.36	15.1	0.0			
11/20/2011	23:21:15	172	4.0	8.35	17.1	0.0			
11/20/2011	23:22:05	42	0.5	8.35	20.8	0.0			
11/20/2011	23:22:55	41	0.0	8.35	20.9	0.0			
11/20/2011	23:23:45	58	0.0	8.35	20.9	0.0			
11/20/2011	23:24:35	146	3.4	8.26	22.2	0.0			
11/20/2011	23:25:25	146	3.4	8.29	25.1	0.0			
11/20/2011	23:26:15	147	3.4	8.28	27.9	0.0			

Well RGU 424-25-198			Field Ryan Gulch Unit		Job Start Nov/21/2011		Customer Williams	Job Number 672668
Date	Time 24-hr clock	Treating Pressure PSI	Flow Rate B/M	Density LB/G	Volume BBL	Solid Fraction NULL	Message	
11/20/2011	23:27:55	131	3.4	8.34	33.7	0.0		
11/20/2011	23:28:45	36	0.1	6.91	36.1	0.0		
11/20/2011	23:29:35	48	0.0	8.35	36.2	0.0		
11/20/2011	23:30:25	34	0.0	8.34	36.2	0.0		
11/20/2011	23:31:15	34	0.0	0.02	0.0	0.0		
11/20/2011	23:32:05	34	0.0	0.00	0.0	0.0		
11/20/2011	23:32:55	34	0.0	0.01	0.0	0.0		
11/20/2011	23:33:45	34	0.0	0.00	0.0	0.0		
11/20/2011	23:34:35	34	0.0	0.01	0.0	0.0		
11/20/2011	23:35:25	34	0.0	0.01	0.0	0.0		
11/20/2011	23:36:15	34	0.0	0.01	0.0	0.0		
11/20/2011	23:37:05	34	0.0	0.01	0.0	0.0		
11/20/2011	23:37:55	34	0.0	0.01	0.0	0.0		
11/20/2011	23:38:45	33	0.0	0.01	0.0	0.0		
11/20/2011	23:39:35	34	0.0	0.01	0.0	0.0		
11/20/2011	23:40:25	34	0.0	0.01	0.0	0.0		
11/20/2011	23:41:15	33	0.0	0.01	0.0	0.0		
11/20/2011	23:42:05	33	0.0	0.01	0.0	0.0		
11/20/2011	23:42:55	35	0.0	0.01	0.0	0.0		
11/20/2011	23:43:45	35	0.0	0.01	0.0	0.0		
11/20/2011	23:44:35	34	0.0	0.01	0.0	0.0		
11/20/2011	23:45:00	34	0.0	0.01	0.0	0.0	Start Job	
11/20/2011	23:45:25	35	0.0	0.01	0.0	0.0		
11/20/2011	23:46:15	34	0.0	0.01	0.0	0.0		
11/20/2011	23:47:55	35	0.0	0.01	0.0	0.0		
11/20/2011	23:48:45	34	0.0	0.01	0.0	0.0		
11/20/2011	23:49:00	34	0.0	0.01	0.0	0.0	Start Pumping Wash	
11/20/2011	23:49:35	34	0.0	0.01	0.0	0.0		
11/20/2011	23:50:00	34	0.0	0.01	0.0	0.0	Pressure Test Lines	
11/20/2011	23:50:25	31	0.0	0.01	0.0	0.0		
11/20/2011	23:51:15	31	0.0	0.01	0.0	0.0		
11/20/2011	23:52:05	31	0.0	0.01	0.0	0.0		
11/20/2011	23:53:45	30	0.0	0.01	0.0	0.0		
11/20/2011	23:54:35	29	0.0	8.35	0.0	0.0		
11/20/2011	23:55:00	29	0.0	8.35	0.0	0.0	500/3000 psi Pressure Test Successful	
11/20/2011	23:55:25	92	2.8	8.13	0.1	0.0		
11/20/2011	23:56:00	95	0.0	8.34	0.6	0.0	20 bbls of Water	
11/20/2011	23:56:15	159	1.1	8.33	0.6	0.0		
11/20/2011	23:57:05	98	1.1	8.34	2.3	0.0		
11/20/2011	23:57:55	563	0.0	8.35	2.3	0.0		
11/20/2011	23:58:45	1199	0.0	8.35	2.3	0.0		
11/20/2011	23:59:35	2983	0.0	8.35	2.3	0.0		
11/21/2011	00:00:25	2957	0.0	8.35	2.3	0.0		
11/21/2011	00:01:15	77	0.0	8.35	2.3	0.0		
11/21/2011	00:02:05	227	3.3	8.34	3.3	0.0		
11/21/2011	00:02:55	235	3.3	8.34	6.1	0.0		
11/21/2011	00:03:45	239	3.3	8.35	8.8	0.0		
11/21/2011	00:04:35	251	3.3	8.35	11.6	0.0		
11/21/2011	00:05:25	307	4.4	8.34	15.0	0.0		
11/21/2011	00:06:15	316	4.4	8.34	18.6	0.0		
11/21/2011	00:07:05	396	4.3	12.82	22.3	0.0		
11/21/2011	00:07:55	678	7.4	12.77	26.9	0.0		
11/21/2011	00:08:45	596	7.8	12.91	33.4	0.0		
11/21/2011	00:09:35	657	7.8	12.93	39.9	0.0		

Well RGU 424-25-198			Field Ryan Gulch Unit		Job Start Nov/21/2011		Customer Williams	Job Number 672668
Date	Time 24-hr clock	Treating Pressure PSI	Flow Rate B/M	Density LB/G	Volume BBL	Solid Fraction NULL	Message	
11/21/2011	00:10:25	633	7.8	12.94	46.4	0.0		
11/21/2011	00:11:00	602	7.8	12.95	51.0	0.0	Start Cement Slurry	
11/21/2011	00:11:15	625	7.9	12.95	52.9	0.0		
11/21/2011	00:12:00	605	7.8	12.94	58.8	0.0	Yeild = 1.72 t^3/sk	
11/21/2011	00:12:05	589	7.8	12.94	59.5	0.0		
11/21/2011	00:12:55	581	7.6	12.91	66.0	0.0		
11/21/2011	00:13:45	532	7.8	12.88	72.5	0.0		
11/21/2011	00:14:35	570	7.9	12.86	79.0	0.0		
11/21/2011	00:15:25	579	7.9	12.85	85.6	0.0		
11/21/2011	00:16:15	553	7.9	12.85	92.1	0.0		
11/21/2011	00:17:05	570	7.9	12.85	98.7	0.0		
11/21/2011	00:17:55	535	7.9	12.84	105.2	0.0		
11/21/2011	00:18:45	548	7.9	12.84	111.8	0.0		
11/21/2011	00:19:35	560	7.9	12.87	118.4	0.0		
11/21/2011	00:20:25	564	7.9	12.88	124.9	0.0		
11/21/2011	00:21:15	589	7.9	12.89	131.5	0.0		
11/21/2011	00:22:05	601	7.9	12.88	138.1	0.0		
11/21/2011	00:22:55	585	7.9	12.90	144.7	0.0		
11/21/2011	00:23:45	593	7.9	12.91	151.3	0.0		
11/21/2011	00:24:35	582	7.9	12.91	157.9	0.0		
11/21/2011	00:25:25	593	7.9	12.97	164.4	0.0		
11/21/2011	00:26:15	586	7.9	12.85	171.0	0.0		
11/21/2011	00:27:05	566	7.9	12.82	177.6	0.0		
11/21/2011	00:27:55	582	7.9	12.89	184.2	0.0		
11/21/2011	00:28:45	584	7.9	12.89	190.8	0.0		
11/21/2011	00:29:35	578	7.9	12.84	197.3	0.0		
11/21/2011	00:30:00	587	7.9	12.84	200.6	0.0	Good Returns	
11/21/2011	00:30:25	587	7.9	12.84	203.9	0.0		
11/21/2011	00:31:15	589	7.9	12.84	210.5	0.0		
11/21/2011	00:32:05	577	7.9	12.82	217.1	0.0		
11/21/2011	00:32:55	587	7.9	12.85	223.7	0.0		
11/21/2011	00:33:45	563	7.9	12.79	230.3	0.0		
11/21/2011	00:34:35	573	7.9	13.00	236.9	0.0		
11/21/2011	00:35:25	363	6.0	12.87	242.8	0.0		
11/21/2011	00:36:15	257	4.4	12.89	247.4	0.0		
11/21/2011	00:37:05	227	4.4	12.37	251.0	0.0		
11/21/2011	00:37:55	397	6.4	12.58	255.8	0.0		
11/21/2011	00:38:45	406	6.4	12.84	261.1	0.0		
11/21/2011	00:39:35	404	6.3	12.77	266.4	0.0		
11/21/2011	00:40:00	446	6.3	12.80	269.0	0.0	Sample Taken at 12.83	
11/21/2011	00:40:25	455	6.3	12.83	271.6	0.0		
11/21/2011	00:41:00	391	6.3	12.71	275.3	0.0	Scale Reads 12.83	
11/21/2011	00:41:15	411	6.3	12.73	276.9	0.0		
11/21/2011	00:42:05	380	6.3	12.56	282.2	0.0		
11/21/2011	00:42:55	42	0.0	13.44	285.5	0.0		
11/21/2011	00:43:45	57	0.0	13.11	285.5	0.0		
11/21/2011	00:44:35	48	0.0	12.55	285.5	0.0		
11/21/2011	00:45:25	53	0.0	12.55	285.5	0.0		
11/21/2011	00:46:15	54	0.0	12.64	285.5	0.0		
11/21/2011	00:47:05	54	0.0	12.67	285.5	0.0		
11/21/2011	00:47:55	53	0.0	12.69	285.5	0.0		
11/21/2011	00:48:45	54	0.0	12.71	285.5	0.0		
11/21/2011	00:49:35	54	0.0	12.65	285.5	0.0		
11/21/2011	00:50:25	54	0.0	12.78	285.5	0.0		

Well RGU 424-25-198			Field Ryan Gulch Unit		Job Start Nov/21/2011		Customer Williams	Job Number 672668
Date	Time 24-hr clock	Treating Pressure PSI	Flow Rate B/M	Density LB/G	Volume BBL	Solid Fraction NULL	Message	
11/21/2011	00:52:05	56	0.0	12.98	285.5	0.0		
11/21/2011	00:52:55	56	0.0	12.83	285.5	0.0		
11/21/2011	00:53:45	54	0.1	12.25	285.5	0.0		
11/21/2011	00:54:35	184	3.7	9.01	287.3	0.0		
11/21/2011	00:55:25	237	5.3	8.64	291.5	0.0		
11/21/2011	00:56:15	306	6.3	8.48	296.2	0.0		
11/21/2011	00:57:05	290	6.3	8.41	301.4	0.0		
11/21/2011	00:57:55	387	7.8	8.38	307.5	0.0		
11/21/2011	00:58:45	401	7.8	8.37	314.0	0.0		
11/21/2011	00:59:35	403	7.8	8.36	320.4	0.0		
11/21/2011	01:00:25	380	7.7	8.36	326.8	0.0		
11/21/2011	01:01:15	387	7.7	8.32	333.3	0.0		
11/21/2011	01:02:05	381	7.8	8.33	339.7	0.0		
11/21/2011	01:02:55	251	5.9	8.27	345.5	0.0		
11/21/2011	01:03:45	245	5.9	8.28	350.4	0.0		
11/21/2011	01:04:35	255	5.8	8.25	355.3	0.0		
11/21/2011	01:05:25	237	5.9	8.29	360.2	0.0		
11/21/2011	01:06:15	248	5.9	8.29	365.0	0.0		
11/21/2011	01:07:05	235	5.9	8.27	370.0	0.0		
11/21/2011	01:07:55	238	5.9	8.32	374.9	0.0		
11/21/2011	01:08:45	248	5.9	8.33	379.7	0.0		
11/21/2011	01:09:35	224	5.9	8.35	384.6	0.0		
11/21/2011	01:10:25	231	5.9	8.35	389.5	0.0		
11/21/2011	01:11:15	229	5.9	8.36	394.4	0.0		
11/21/2011	01:12:05	238	5.9	8.36	399.3	0.0		
11/21/2011	01:12:55	239	5.9	8.36	404.2	0.0		
11/21/2011	01:13:45	225	5.9	8.35	409.1	0.0		
11/21/2011	01:14:35	237	5.9	8.36	414.0	0.0		
11/21/2011	01:15:25	68	1.7	8.36	417.4	0.0		
11/21/2011	01:16:15	75	2.1	8.36	419.0	0.0		
11/21/2011	01:17:05	74	2.0	8.36	420.7	0.0		
11/21/2011	01:17:55	75	1.9	8.36	422.3	0.0		
11/21/2011	01:18:45	80	2.0	8.36	423.9	0.0		
11/21/2011	01:19:35	81	1.8	8.36	425.5	0.0		
11/21/2011	01:20:00	80	1.7	8.36	426.2	0.0	Drop Dart	
11/21/2011	01:20:25	81	1.7	8.36	427.0	0.0		
11/21/2011	01:21:00	82	1.6	8.36	427.9	0.0	Good Returns	
11/21/2011	01:21:15	82	1.5	8.36	428.3	0.0		
11/21/2011	01:22:05	94	1.8	8.36	429.6	0.0		
11/21/2011	01:22:55	94	1.7	8.36	431.2	0.0		
11/21/2011	01:23:45	96	1.5	8.36	432.5	0.0		
11/21/2011	01:24:35	95	1.4	8.36	433.7	0.0		
11/21/2011	01:25:25	100	1.2	8.36	434.8	0.0		
11/21/2011	01:26:15	99	1.3	8.36	435.9	0.0		
11/21/2011	01:27:05	98	1.1	8.36	436.9	0.0		
11/21/2011	01:27:55	104	1.1	8.36	437.8	0.0		
11/21/2011	01:28:45	106	1.1	8.35	438.7	0.0		
11/21/2011	01:29:35	133	1.1	8.35	439.6	0.0		
11/21/2011	01:30:25	239	4.3	8.36	442.2	0.0		
11/21/2011	01:31:15	358	5.8	8.36	446.3	0.0		
11/21/2011	01:32:05	372	5.8	8.36	451.2	0.0		
11/21/2011	01:32:55	424	5.9	8.36	456.0	0.0		
11/21/2011	01:33:45	407	5.8	8.36	460.9	0.0		
11/21/2011	01:34:35	436	5.9	8.36	465.8	0.0		

Well RGU 424-25-198			Field Ryan Gulch Unit		Job Start Nov/21/2011		Customer Williams	Job Number 672668
Date	Time 24-hr clock	Treating Pressure PSI	Flow Rate B/M	Density LB/G	Volume BBL	Solid Fraction NULL	Message	
11/21/2011	01:36:15	508	5.9	8.36	475.5	0.0		
11/21/2011	01:37:05	514	5.8	8.36	480.4	0.0		
11/21/2011	01:37:55	532	5.8	8.36	485.3	0.0		
11/21/2011	01:38:45	594	5.8	8.36	490.1	0.0		
11/21/2011	01:39:35	605	5.9	8.36	495.0	0.0		
11/21/2011	01:40:25	598	5.8	8.36	499.9	0.0		
11/21/2011	01:41:15	649	5.8	8.36	504.7	0.0		
11/21/2011	01:42:05	651	5.8	8.36	509.6	0.0		
11/21/2011	01:42:55	660	5.8	8.36	514.5	0.0		
11/21/2011	01:43:45	701	5.8	8.36	519.3	0.0		
11/21/2011	01:44:35	726	5.8	8.36	524.2	0.0		
11/21/2011	01:45:25	741	5.8	8.36	529.0	0.0		
11/21/2011	01:46:15	768	5.8	8.36	533.9	0.0		
11/21/2011	01:47:05	771	5.8	8.36	538.8	0.0		
11/21/2011	01:47:55	829	5.8	8.36	543.6	0.0		
11/21/2011	01:48:45	805	5.8	8.36	548.5	0.0		
11/21/2011	01:49:35	834	5.8	8.36	553.3	0.0		
11/21/2011	01:50:00	849	5.8	8.36	555.8	0.0	Good Returns	
11/21/2011	01:50:25	895	5.8	8.36	558.2	0.0		
11/21/2011	01:51:15	890	5.8	8.36	563.0	0.0		
11/21/2011	01:52:05	914	5.8	8.36	567.9	0.0		
11/21/2011	01:52:55	930	5.8	8.36	572.8	0.0		
11/21/2011	01:53:45	893	4.2	8.36	577.4	0.0		
11/21/2011	01:54:35	879	4.0	8.36	580.8	0.0		
11/21/2011	01:55:25	862	4.0	8.36	584.1	0.0		
11/21/2011	01:56:15	860	2.6	8.36	587.2	0.0		
11/21/2011	01:57:05	973	2.5	8.36	589.3	0.0		
11/21/2011	01:57:55	1288	0.0	8.36	589.8	0.0		
11/21/2011	01:58:45	1291	0.0	8.36	589.8	0.0		
11/21/2011	01:59:35	1185	0.0	8.36	589.8	0.0		
11/21/2011	02:00:00	511	0.0	8.37	589.8	0.0	End Displacement	
11/21/2011	02:00:25	32	0.0	8.37	589.8	0.0		
11/21/2011	02:01:15	34	0.0	8.37	589.8	0.0		
11/21/2011	02:02:05	34	0.0	8.37	589.8	0.0		
11/21/2011	02:02:55	35	0.0	8.37	589.8	0.0		
11/21/2011	02:03:45	35	0.0	8.37	589.8	0.0		
11/21/2011	02:04:35	35	0.0	8.37	589.8	0.0		
11/21/2011	02:05:00	35	0.0	8.37	589.8	0.0	Drop Bomb	
11/21/2011	02:05:25	35	0.0	8.37	589.8	0.0		
11/21/2011	02:06:00	35	0.0	8.37	589.8	0.0	End Job	
11/21/2011	02:06:15	35	0.0	8.37	589.8	0.0		
11/21/2011	02:07:05	35	0.0	8.37	589.8	0.0		
11/21/2011	02:07:55	35	0.0	8.37	589.8	0.0		
11/21/2011	02:08:45	35	0.0	8.37	589.8	0.0		
11/21/2011	02:09:35	35	0.0	8.37	589.8	0.0		
11/21/2011	02:10:25	35	0.0	8.37	589.8	0.0		
11/21/2011	02:11:15	34	0.0	8.37	589.8	0.0		
11/21/2011	02:12:05	39	0.0	8.37	589.8	0.0		
11/21/2011	02:12:55	39	0.0	8.37	589.8	0.0		
11/21/2011	02:13:45	39	0.0	8.37	589.8	0.0		
11/21/2011	02:14:35	39	0.0	8.37	589.8	0.0		
11/21/2011	02:15:25	39	0.0	8.37	589.8	0.0		
11/21/2011	02:17:05	40	0.0	8.37	589.8	0.0		
11/21/2011	02:17:55	40	0.0	8.37	589.8	0.0		

Well RGU 424-25-198			Field Ryan Gulch Unit		Job Start Nov/21/2011		Customer Williams		Job Number 672668	
Date	Time 24-hr clock	Treating Pressure PSI	Flow Rate B/M	Density LB/G	Volume BBL	Solid Fraction NULL	Message			
11/21/2011	02:19:35	41	0.0	8.37	589.8	0.0				
11/21/2011	02:20:25	40	0.0	8.37	589.8	0.0				
11/21/2011	02:21:15	295	1.5	8.38	589.9	0.0				
11/21/2011	02:22:05	251	1.8	8.36	590.4	0.0				
11/21/2011	02:22:55	445	5.2	8.36	593.3	0.0				
11/21/2011	02:23:45	442	5.2	8.36	597.6	0.0				
11/21/2011	02:24:35	248	0.0	8.37	600.8	0.0				
11/21/2011	02:25:25	235	0.0	8.37	600.8	0.0				
11/21/2011	02:26:15	239	0.0	8.36	600.8	0.0				
11/21/2011	02:27:05	248	0.0	8.36	600.8	0.0				
11/21/2011	02:27:55	179	0.0	8.37	600.8	0.0				
11/21/2011	02:28:45	33	0.0	8.36	600.8	0.0				
11/21/2011	02:29:35	33	0.0	8.37	600.8	0.0				
11/21/2011	02:30:25	34	0.0	8.37	600.8	0.0				
11/21/2011	02:31:15	33	0.0	8.37	600.8	0.0				
11/21/2011	02:32:05	33	0.0	8.37	600.8	0.0				
11/21/2011	02:32:55	33	0.0	8.37	600.8	0.0				
11/21/2011	02:33:45	33	0.0	8.37	600.8	0.0				
11/21/2011	02:34:35	33	0.0	8.37	600.8	0.0				
11/21/2011	02:35:25	33	0.0	8.37	600.8	0.0				
11/21/2011	02:36:15	33	0.0	8.37	600.8	0.0				
11/21/2011	02:37:05	33	0.0	8.37	600.8	0.0				
11/21/2011	02:37:55	34	0.0	8.37	600.8	0.0				
11/21/2011	02:38:45	33	0.0	8.37	600.8	0.0				
11/21/2011	02:40:25	33	0.0	8.37	600.8	0.0				
11/21/2011	02:41:15	33	0.0	8.37	600.8	0.0				
11/21/2011	02:42:05	33	0.0	8.37	600.8	0.0				
11/21/2011	02:42:55	33	0.0	8.37	600.8	0.0				
11/21/2011	02:43:45	32	0.0	8.37	600.8	0.0				
11/21/2011	02:44:35	33	0.0	8.37	600.8	0.0				
11/21/2011	02:45:25	33	0.0	8.37	600.8	0.0				
11/21/2011	02:46:15	33	0.0	8.37	600.8	0.0				
11/21/2011	02:47:55	33	0.0	8.37	600.8	0.0				
11/21/2011	02:48:45	33	0.0	8.37	600.8	0.0				
11/21/2011	02:49:35	33	0.0	8.37	600.8	0.0				
11/21/2011	02:50:25	32	0.0	8.37	600.8	0.0				
11/21/2011	02:51:15	33	0.0	8.37	600.8	0.0				
11/21/2011	02:52:05	33	0.0	8.37	600.8	0.0				
11/21/2011	02:52:55	33	0.0	8.37	600.8	0.0				
11/21/2011	02:53:45	33	0.0	8.37	600.8	0.0				
11/21/2011	02:54:35	32	0.0	8.37	600.8	0.0				
11/21/2011	02:55:25	33	0.0	8.36	600.8	0.0				
11/21/2011	02:56:15	32	0.0	8.37	600.8	0.0				
11/21/2011	02:57:05	32	0.0	8.37	600.8	0.0				
11/21/2011	02:59:35	32	0.0	8.37	600.8	0.0				
11/21/2011	03:00:25	32	0.0	8.36	600.8	0.0				
11/21/2011	03:01:15	32	0.0	8.37	600.8	0.0				
11/21/2011	03:02:05	32	0.0	8.36	600.8	0.0				
11/21/2011	03:02:55	32	0.0	8.37	600.8	0.0				
11/21/2011	03:03:45	33	0.0	8.36	600.8	0.0				
11/21/2011	03:04:35	32	0.0	8.36	600.8	0.0				
11/21/2011	03:05:25	33	0.0	8.37	600.8	0.0				
11/21/2011	03:06:15	32	0.0	8.36	600.8	0.0				
11/21/2011	03:07:05	32	0.0	8.36	600.8	0.0				

Well RGU 424-25-198			Field Ryan Gulch Unit		Job Start Nov/21/2011		Customer Williams	Job Number 672668
Date	Time 24-hr clock	Treating Pressure PSI	Flow Rate B/M	Density LB/G	Volume BBL	Solid Fraction NULL	Message	
11/21/2011	03:08:45	32	0.0	8.36	600.8	0.0		
11/21/2011	03:10:25	32	0.0	8.36	600.8	0.0		
11/21/2011	03:11:15	32	0.0	8.36	600.8	0.0		
11/21/2011	03:12:05	32	0.0	8.36	600.8	0.0		
11/21/2011	03:12:55	32	0.0	8.36	600.8	0.0		
11/21/2011	03:13:45	32	0.0	8.36	600.8	0.0		
11/21/2011	03:14:35	32	0.0	8.36	600.8	0.0		
11/21/2011	03:16:15	32	0.0	8.36	600.8	0.0		
11/21/2011	03:17:05	32	0.0	8.36	600.8	0.0		
11/21/2011	03:17:55	32	0.0	8.36	600.8	0.0		
11/21/2011	03:18:45	32	0.0	8.36	600.8	0.0		
11/21/2011	03:20:25	32	0.0	8.36	600.8	0.0		
11/21/2011	03:21:15	32	0.0	8.36	600.8	0.0		
11/21/2011	03:22:05	32	0.0	8.36	600.8	0.0		
11/21/2011	03:22:55	32	0.0	8.36	600.8	0.0		
11/21/2011	03:23:45	32	0.0	8.36	600.8	0.0		
11/21/2011	03:24:35	32	0.0	8.36	600.8	0.0		
11/21/2011	03:25:25	32	0.0	8.36	600.8	0.0		
11/21/2011	03:27:05	32	0.0	8.36	600.8	0.0		
11/21/2011	03:27:55	32	0.0	8.36	600.8	0.0		
11/21/2011	03:28:45	32	0.0	8.36	600.8	0.0		
11/21/2011	03:29:35	32	0.0	8.36	600.8	0.0		
11/21/2011	03:31:15	32	0.0	8.36	600.8	0.0		
11/21/2011	03:32:05	32	0.0	8.36	600.8	0.0		
11/21/2011	03:33:45	32	0.0	8.36	600.8	0.0		
11/21/2011	03:35:25	32	0.0	8.36	600.8	0.0		
11/21/2011	03:36:15	32	0.0	8.36	600.8	0.0		
11/21/2011	03:37:05	32	0.0	8.36	600.8	0.0		
11/21/2011	03:37:55	32	0.0	8.36	600.8	0.0		
11/21/2011	03:38:45	32	0.0	8.36	600.8	0.0		
11/21/2011	03:39:35	32	0.0	8.36	600.8	0.0		
11/21/2011	03:40:25	32	0.0	8.36	600.8	0.0		
11/21/2011	03:41:15	32	0.0	8.36	600.8	0.0		
11/21/2011	03:42:05	32	0.0	8.36	600.8	0.0		
11/21/2011	03:43:45	32	0.0	8.36	600.8	0.0		
11/21/2011	03:44:35	32	0.0	8.36	600.8	0.0		
11/21/2011	03:47:05	32	0.0	8.36	600.8	0.0		
11/21/2011	03:47:55	32	0.0	8.36	600.8	0.0		
11/21/2011	03:48:45	32	0.0	8.36	600.8	0.0		
11/21/2011	03:49:35	32	0.0	8.36	600.8	0.0		
11/21/2011	03:50:25	32	0.0	8.36	600.8	0.0		
11/21/2011	03:51:15	32	0.0	8.36	600.8	0.0		
11/21/2011	03:52:05	32	0.0	8.36	600.8	0.0		
11/21/2011	03:52:55	32	0.0	8.36	600.8	0.0		
11/21/2011	03:53:45	32	0.0	8.36	600.8	0.0		
11/21/2011	03:54:35	32	0.0	8.36	600.8	0.0		
11/21/2011	03:55:25	31	0.0	8.36	600.8	0.0		
11/21/2011	03:56:15	32	0.0	8.36	600.8	0.0		
11/21/2011	03:57:05	32	0.0	8.36	600.8	0.0		
11/21/2011	03:57:55	31	0.0	8.36	600.8	0.0		
11/21/2011	03:58:45	32	0.0	8.36	600.8	0.0		
11/21/2011	03:59:35	31	0.0	8.36	600.8	0.0		
11/21/2011	04:00:25	32	0.0	8.36	600.8	0.0		
11/21/2011	04:02:05	31	0.0	8.36	600.8	0.0		

Well RGU 424-25-198			Field Ryan Gulch Unit		Job Start Nov/21/2011		Customer Williams	Job Number 672668
Date	Time 24-hr clock	Treating Pressure PSI	Flow Rate B/M	Density LB/G	Volume BBL	Solid Fraction NULL	Message	
11/21/2011	04:03:45	32	0.0	8.36	600.8	0.0		
11/21/2011	04:04:35	31	0.0	8.36	600.8	0.0		
11/21/2011	04:05:25	31	0.0	8.36	600.8	0.0		
11/21/2011	04:06:15	31	0.0	8.36	600.8	0.0		
11/21/2011	04:07:05	31	0.0	8.36	600.8	0.0		
11/21/2011	04:07:55	32	0.0	8.36	600.8	0.0		
11/21/2011	04:08:45	31	0.0	8.36	600.8	0.0		
11/21/2011	04:09:35	31	0.0	8.36	600.8	0.0		
11/21/2011	04:10:25	31	0.0	8.36	600.8	0.0		
11/21/2011	04:11:15	31	0.0	8.36	600.8	0.0		
11/21/2011	04:12:05	31	0.0	8.36	600.8	0.0		
11/21/2011	04:12:55	31	0.0	8.36	600.8	0.0		
11/21/2011	04:13:45	31	0.0	8.36	600.8	0.0		
11/21/2011	04:14:35	31	0.0	8.36	600.8	0.0		
11/21/2011	04:15:25	31	0.0	8.36	600.8	0.0		
11/21/2011	04:16:15	31	0.0	8.36	600.8	0.0		
11/21/2011	04:17:55	32	0.0	8.36	600.8	0.0		
11/21/2011	04:18:45	31	0.0	8.36	600.8	0.0		
11/21/2011	04:20:25	31	0.0	8.36	600.8	0.0		
11/21/2011	04:21:15	31	0.0	8.36	600.8	0.0		
11/21/2011	04:22:05	31	0.0	8.36	600.8	0.0		
11/21/2011	04:22:55	31	0.0	8.36	600.8	0.0		
11/21/2011	04:23:45	31	0.0	8.36	600.8	0.0		
11/21/2011	04:24:35	31	0.0	8.36	600.8	0.0		
11/21/2011	04:25:25	31	0.0	8.36	600.8	0.0		
11/21/2011	04:27:05	31	0.0	8.36	600.8	0.0		
11/21/2011	04:27:55	31	0.0	8.36	600.8	0.0		
11/21/2011	04:28:45	31	0.0	8.36	600.8	0.0		
11/21/2011	04:29:35	31	0.0	8.36	600.8	0.0		
11/21/2011	04:30:25	31	0.0	8.36	600.8	0.0		
11/21/2011	04:31:15	31	0.0	8.36	600.8	0.0		
11/21/2011	04:32:05	31	0.0	8.36	600.8	0.0		
11/21/2011	04:32:55	31	0.0	8.36	600.8	0.0		
11/21/2011	04:33:45	31	0.0	8.36	600.8	0.0		
11/21/2011	04:34:35	31	0.0	8.36	600.8	0.0		
11/21/2011	04:35:25	31	0.0	8.36	600.8	0.0		
11/21/2011	04:36:15	31	0.0	8.36	600.8	0.0		
11/21/2011	04:37:05	31	0.0	8.36	600.8	0.0		
11/21/2011	04:37:55	31	0.0	8.36	600.8	0.0		
11/21/2011	04:38:45	31	0.0	8.36	600.8	0.0		
11/21/2011	04:39:35	31	0.0	8.36	600.8	0.0		
11/21/2011	04:40:25	31	0.0	8.36	600.8	0.0		
11/21/2011	04:41:15	31	0.0	8.36	600.8	0.0		
11/21/2011	04:42:05	31	0.0	8.36	600.8	0.0		
11/21/2011	04:42:55	31	0.0	8.36	600.8	0.0		
11/21/2011	04:44:35	31	0.0	8.36	600.8	0.0		
11/21/2011	04:45:25	31	0.0	8.36	600.8	0.0		
11/21/2011	04:46:15	31	0.0	8.36	600.8	0.0		
11/21/2011	04:47:05	31	0.0	8.36	600.8	0.0		
11/21/2011	04:47:55	31	0.0	8.36	600.8	0.0		
11/21/2011	04:48:45	31	0.0	8.36	600.8	0.0		
11/21/2011	04:49:35	31	0.0	8.36	600.8	0.0		
11/21/2011	04:50:25	31	0.0	8.36	600.8	0.0		
11/21/2011	04:51:15	31	0.0	8.36	600.8	0.0		

Well RGU 424-25-198			Field Ryan Gulch Unit		Job Start Nov/21/2011		Customer Williams	Job Number 672668
Date	Time 24-hr clock	Treating Pressure PSI	Flow Rate B/M	Density LB/G	Volume BBL	Solid Fraction NULL	Message	
11/21/2011	04:52:55	31	0.0	8.36	600.8	0.0		
11/21/2011	04:53:45	32	0.0	8.36	600.8	0.0		
11/21/2011	04:54:35	31	0.0	8.36	600.8	0.0		
11/21/2011	04:57:05	31	0.0	8.36	600.8	0.0		
11/21/2011	04:57:55	31	0.0	8.36	600.8	0.0		
11/21/2011	04:58:45	31	0.0	8.36	600.8	0.0		
11/21/2011	04:59:35	31	0.0	8.36	600.8	0.0		
11/21/2011	05:00:25	31	0.0	8.36	600.8	0.0		
11/21/2011	05:01:15	31	0.0	8.36	600.8	0.0		
11/21/2011	05:02:05	31	0.0	8.36	600.8	0.0		
11/21/2011	05:02:55	31	0.0	8.36	600.8	0.0		
11/21/2011	05:03:45	32	0.0	8.36	600.8	0.0		
11/21/2011	05:04:35	31	0.0	8.36	600.8	0.0		
11/21/2011	05:06:15	31	0.0	8.36	600.8	0.0		
11/21/2011	05:07:05	31	0.0	8.36	600.8	0.0		
11/21/2011	05:08:45	31	0.0	8.36	600.8	0.0		
11/21/2011	05:10:25	31	0.0	8.36	600.8	0.0		
11/21/2011	05:11:15	31	0.0	8.36	600.8	0.0		
11/21/2011	05:12:05	31	0.0	8.36	600.8	0.0		
11/21/2011	05:12:55	31	0.0	8.36	600.8	0.0		
11/21/2011	05:13:45	31	0.0	8.36	600.8	0.0		
11/21/2011	05:14:35	31	0.0	8.36	600.8	0.0		
11/21/2011	05:17:05	31	0.0	8.36	600.8	0.0		
11/21/2011	05:17:55	31	0.0	8.36	600.8	0.0		
11/21/2011	05:18:45	31	0.0	8.36	600.8	0.0		
11/21/2011	05:19:35	31	0.0	8.36	600.8	0.0		
11/21/2011	05:20:25	31	0.0	8.36	600.8	0.0		
11/21/2011	05:21:15	32	0.0	8.36	600.8	0.0		
11/21/2011	05:22:05	31	0.0	8.36	600.8	0.0		
11/21/2011	05:22:55	31	0.0	8.36	600.8	0.0		
11/21/2011	05:23:45	31	0.0	8.36	600.8	0.0		
11/21/2011	05:24:35	31	0.0	8.36	600.8	0.0		
11/21/2011	05:25:25	31	0.0	8.36	600.8	0.0		
11/21/2011	05:26:15	31	0.0	8.36	600.8	0.0		
11/21/2011	05:27:05	31	0.0	8.36	600.8	0.0		
11/21/2011	05:28:45	31	0.0	8.36	600.8	0.0		
11/21/2011	05:29:35	31	0.0	8.36	600.8	0.0		
11/21/2011	05:30:25	31	0.0	8.36	600.8	0.0		
11/21/2011	05:31:15	31	0.0	8.36	600.8	0.0		
11/21/2011	05:32:05	31	0.0	8.36	600.8	0.0		
11/21/2011	05:33:45	31	0.0	8.36	600.8	0.0		
11/21/2011	05:34:35	31	0.0	8.36	600.8	0.0		
11/21/2011	05:36:15	31	0.0	8.36	600.8	0.0		
11/21/2011	05:37:05	31	0.0	8.36	600.8	0.0		
11/21/2011	05:37:55	31	0.0	8.36	600.8	0.0		
11/21/2011	05:38:45	36	0.5	8.35	601.4	0.0		
11/21/2011	05:39:35	31	0.0	8.35	601.6	0.0		
11/21/2011	05:40:25	31	0.0	8.35	601.6	0.0		
11/21/2011	05:41:15	36	0.3	8.35	603.1	0.0		
11/21/2011	05:42:05	31	0.0	8.35	603.1	0.0		
11/21/2011	05:43:45	31	0.0	8.35	603.1	0.0		
11/21/2011	05:44:35	31	0.0	8.35	603.1	0.0		
11/21/2011	05:45:25	31	0.0	8.35	603.1	0.0		
11/21/2011	05:46:15	31	0.0	8.35	603.1	0.0		

Well RGU 424-25-198			Field Ryan Gulch Unit		Job Start Nov/21/2011		Customer Williams	Job Number 672668
Date	Time 24-hr clock	Treating Pressure PSI	Flow Rate B/M	Density LB/G	Volume BBL	Solid Fraction NULL	Message	
11/21/2011	05:47:55	31	0.0	8.35	603.1	0.0		
11/21/2011	05:48:45	31	0.0	8.35	603.1	0.0		
11/21/2011	05:49:35	31	0.0	8.35	603.1	0.0		
11/21/2011	05:50:25	31	0.0	8.35	603.1	0.0		
11/21/2011	05:51:15	31	0.0	8.35	603.1	0.0		
11/21/2011	05:52:05	31	0.0	8.35	603.1	0.0		
11/21/2011	05:52:55	31	0.0	8.35	603.1	0.0		
11/21/2011	05:54:35	31	0.0	8.35	603.1	0.0		
11/21/2011	05:55:25	31	0.0	8.35	603.1	0.0		
11/21/2011	05:57:55	31	0.0	8.35	603.1	0.0		
11/21/2011	05:59:35	31	0.0	8.35	603.1	0.0		
11/21/2011	06:00:25	31	0.0	8.35	603.1	0.0		
11/21/2011	06:01:15	31	0.0	8.35	603.1	0.0		
11/21/2011	06:02:05	31	0.0	8.35	603.1	0.0		
11/21/2011	06:02:55	32	0.0	8.35	603.1	0.0		
11/21/2011	06:03:45	31	0.0	8.35	603.1	0.0		
11/21/2011	06:04:00	32	0.0	8.35	603.1	0.0	Start Job	
11/21/2011	06:04:35	31	0.0	8.35	603.1	0.0		
11/21/2011	06:05:00	32	0.0	8.35	603.1	0.0	Start Pumping Wash	
11/21/2011	06:05:25	31	0.0	8.35	603.1	0.0		
11/21/2011	06:06:15	31	0.0	8.35	603.1	0.0		
11/21/2011	06:07:00	31	0.0	8.35	603.1	0.0	20 bbls of Water	
11/21/2011	06:07:05	31	0.0	8.35	603.1	0.0		
11/21/2011	06:07:55	31	0.0	8.35	0.0	0.0		
11/21/2011	06:08:45	31	0.0	8.36	0.0	0.0		
11/21/2011	06:09:35	110	2.5	8.09	0.3	0.0		
11/21/2011	06:10:00	152	3.4	8.34	1.3	0.0	End Wash	
11/21/2011	06:10:25	163	3.4	8.35	2.8	0.0		
11/21/2011	06:11:15	183	4.3	8.35	5.7	0.0		
11/21/2011	06:12:05	191	4.4	8.35	9.3	0.0		
11/21/2011	06:12:55	192	4.4	8.35	13.0	0.0		
11/21/2011	06:13:45	200	4.4	8.35	16.6	0.0		
11/21/2011	06:14:35	221	4.6	9.48	20.3	0.0		
11/21/2011	06:15:00	399	5.2	12.72	22.1	0.0	Start Cement Slurry	
11/21/2011	06:15:25	413	5.9	12.76	24.5	0.0		
11/21/2011	06:16:15	588	7.8	12.88	30.2	0.0		
11/21/2011	06:17:05	589	7.8	12.92	36.7	0.0		
11/21/2011	06:17:55	609	7.8	12.90	43.2	0.0		
11/21/2011	06:18:45	571	7.8	12.92	49.7	0.0		
11/21/2011	06:19:35	600	7.8	12.95	56.2	0.0		
11/21/2011	06:20:25	607	7.8	12.97	62.7	0.0		
11/21/2011	06:21:15	588	7.8	12.95	69.2	0.0		
11/21/2011	06:22:05	581	7.8	12.78	75.8	0.0		
11/21/2011	06:22:55	557	7.8	12.83	82.3	0.0		
11/21/2011	06:23:45	576	7.8	12.84	88.8	0.0		
11/21/2011	06:24:35	568	7.8	12.85	95.4	0.0		
11/21/2011	06:25:25	584	7.8	12.84	101.9	0.0		
11/21/2011	06:26:15	580	7.9	12.85	108.4	0.0		
11/21/2011	06:27:05	572	7.8	12.85	115.0	0.0		
11/21/2011	06:27:55	575	7.8	12.87	121.5	0.0		
11/21/2011	06:28:45	598	7.9	12.88	128.0	0.0		
11/21/2011	06:29:35	587	7.8	12.89	134.6	0.0		
11/21/2011	06:30:00	585	7.8	12.90	137.8	0.0	1211 sk (369 bbl) of 12.8 Tail	
11/21/2011	06:30:25	590	7.8	12.91	141.1	0.0		

Well RGU 424-25-198			Field Ryan Gulch Unit		Job Start Nov/21/2011		Customer Williams	Job Number 672668
Date	Time 24-hr clock	Treating Pressure PSI	Flow Rate B/M	Density LB/G	Volume BBL	Solid Fraction NULL	Message	
11/21/2011	06:32:05	568	7.8	12.92	154.2	0.0		
11/21/2011	06:32:55	596	7.8	12.95	160.7	0.0		
11/21/2011	06:33:45	579	7.8	13.03	167.2	0.0		
11/21/2011	06:34:35	583	7.9	12.99	173.8	0.0		
11/21/2011	06:35:00	604	7.9	12.94	177.0	0.0	Sample Taken at 12.87	
11/21/2011	06:35:25	604	7.9	12.92	180.3	0.0		
11/21/2011	06:36:15	583	7.8	12.86	186.9	0.0		
11/21/2011	06:37:05	564	7.9	12.81	193.4	0.0		
11/21/2011	06:37:55	582	7.9	12.82	199.9	0.0		
11/21/2011	06:38:45	576	7.8	12.85	206.5	0.0		
11/21/2011	06:39:35	542	7.8	12.82	213.0	0.0		
11/21/2011	06:40:25	546	7.8	12.82	219.5	0.0		
11/21/2011	06:41:00	558	7.9	12.80	224.1	0.0	Scale Reads 12.87	
11/21/2011	06:41:15	568	7.8	12.55	226.1	0.0		
11/21/2011	06:42:05	526	8.1	13.13	232.7	0.0		
11/21/2011	06:42:55	514	8.1	12.97	239.8	0.0		
11/21/2011	06:43:45	553	7.9	13.08	246.6	0.0		
11/21/2011	06:44:35	558	7.8	13.10	253.1	0.0		
11/21/2011	06:45:00	556	7.8	13.07	256.3	0.0	End Tail Slurry	
11/21/2011	06:45:25	548	7.9	12.95	259.6	0.0		
11/21/2011	06:46:00	561	7.8	12.91	264.2	0.0	Start Displacement	
11/21/2011	06:46:15	550	7.8	12.89	266.1	0.0		
11/21/2011	06:47:00	231	4.3	12.57	270.5	0.0	140 bbls of Good Cement to Surface	
11/21/2011	06:47:05	239	4.3	12.53	270.9	0.0		
11/21/2011	06:47:55	253	4.3	13.00	274.4	0.0		
11/21/2011	06:48:45	235	4.3	12.73	278.0	0.0		
11/21/2011	06:49:35	255	4.3	12.74	281.6	0.0		
11/21/2011	06:50:25	251	4.0	12.74	285.1	0.0		
11/21/2011	06:51:15	204	4.0	12.80	288.4	0.0		
11/21/2011	06:52:05	185	3.9	12.84	291.7	0.0		
11/21/2011	06:52:55	211	3.9	12.90	295.0	0.0		
11/21/2011	06:53:45	229	3.9	12.91	298.3	0.0		
11/21/2011	06:54:35	196	4.0	12.81	301.6	0.0		
11/21/2011	06:55:25	328	4.0	12.89	304.9	0.0		
11/21/2011	06:56:15	280	4.1	12.89	308.3	0.0		
11/21/2011	06:57:05	218	4.0	12.88	311.6	0.0		
11/21/2011	06:57:55	269	4.0	12.89	315.0	0.0		
11/21/2011	06:58:45	323	4.0	12.91	318.3	0.0		
11/21/2011	06:59:35	207	4.0	12.88	321.6	0.0		
11/21/2011	07:00:25	262	4.0	12.94	325.0	0.0		
11/21/2011	07:01:15	257	4.0	12.95	328.3	0.0		
11/21/2011	07:02:05	201	4.0	12.92	331.7	0.0		
11/21/2011	07:02:55	192	4.0	12.90	335.0	0.0		
11/21/2011	07:03:45	287	4.0	12.85	338.4	0.0		
11/21/2011	07:04:35	296	3.9	12.75	341.7	0.0		
11/21/2011	07:05:25	302	4.0	12.74	345.0	0.0		
11/21/2011	07:06:15	207	4.1	12.70	348.4	0.0		
11/21/2011	07:07:05	137	3.3	12.69	351.8	0.0		
11/21/2011	07:07:55	60	0.0	13.09	352.1	0.0		
11/21/2011	07:08:45	63	0.0	13.02	352.1	0.0		
11/21/2011	07:09:35	59	0.0	12.67	352.1	0.0		
11/21/2011	07:10:00	59	0.0	12.67	352.1	0.0	140 bbls of Water	
11/21/2011	07:10:25	58	0.0	12.67	352.1	0.0		
11/21/2011	07:11:15	60	0.0	12.67	352.1	0.0		

Well RGU 424-25-198			Field Ryan Gulch Unit		Job Start Nov/21/2011		Customer Williams	Job Number 672668
Date	Time 24-hr clock	Treating Pressure PSI	Flow Rate B/M	Density LB/G	Volume BBL	Solid Fraction NULL	Message	
11/21/2011	07:12:55	59	0.0	12.68	352.1	0.0		
11/21/2011	07:13:45	59	0.0	12.70	352.1	0.0		
11/21/2011	07:14:35	161	2.0	12.24	352.2	0.0		
11/21/2011	07:15:25	152	2.9	8.91	354.0	0.0		
11/21/2011	07:16:15	207	3.3	8.70	356.7	0.0		
11/21/2011	07:17:05	318	5.5	8.50	360.1	0.0		
11/21/2011	07:17:55	260	4.1	8.45	364.0	0.0		
11/21/2011	07:18:45	286	4.1	8.42	367.4	0.0		
11/21/2011	07:19:35	369	4.0	8.39	370.8	0.0		
11/21/2011	07:20:25	370	4.0	8.43	374.1	0.0		
11/21/2011	07:21:15	400	4.0	8.40	377.5	0.0		
11/21/2011	07:22:05	277	4.0	8.38	380.8	0.0		
11/21/2011	07:22:55	343	4.0	8.37	384.1	0.0		
11/21/2011	07:23:45	232	3.9	8.36	387.4	0.0		
11/21/2011	07:24:35	225	3.8	8.35	390.6	0.0		
11/21/2011	07:25:25	277	3.8	8.34	393.8	0.0		
11/21/2011	07:26:15	345	3.8	8.32	397.0	0.0		
11/21/2011	07:27:05	234	3.8	8.30	400.1	0.0		
11/21/2011	07:27:55	296	3.6	8.29	403.2	0.0		
11/21/2011	07:28:45	333	3.5	8.26	406.1	0.0		
11/21/2011	07:29:35	267	3.5	8.26	409.0	0.0		
11/21/2011	07:30:25	338	3.4	8.27	411.9	0.0		
11/21/2011	07:31:15	405	3.5	8.27	414.7	0.0		
11/21/2011	07:32:05	425	3.5	8.27	417.6	0.0		
11/21/2011	07:32:55	380	3.5	8.27	420.5	0.0		
11/21/2011	07:33:45	331	3.4	8.29	423.4	0.0		
11/21/2011	07:34:35	274	3.5	8.29	426.2	0.0		
11/21/2011	07:35:25	394	3.4	8.36	429.1	0.0		
11/21/2011	07:36:15	393	3.4	8.36	431.9	0.0		
11/21/2011	07:37:05	404	3.4	8.36	434.8	0.0		
11/21/2011	07:37:55	439	3.4	8.36	437.6	0.0		
11/21/2011	07:38:45	329	3.4	8.36	440.5	0.0		
11/21/2011	07:39:35	393	3.4	8.36	443.3	0.0		
11/21/2011	07:40:25	434	3.4	8.36	446.2	0.0		
11/21/2011	07:41:15	434	3.4	8.36	449.0	0.0		
11/21/2011	07:42:05	448	3.4	8.36	451.9	0.0		
11/21/2011	07:42:55	371	3.4	8.36	454.7	0.0		
11/21/2011	07:43:45	489	3.4	8.36	457.5	0.0		
11/21/2011	07:44:35	484	3.4	8.36	460.4	0.0		
11/21/2011	07:45:00	487	3.4	8.36	461.8	0.0	Good Returns	
11/21/2011	07:45:25	524	3.4	8.36	463.2	0.0		
11/21/2011	07:46:15	433	3.4	8.36	466.1	0.0		
11/21/2011	07:47:05	320	0.8	8.36	468.7	0.0		
11/21/2011	07:47:55	431	0.8	8.36	469.3	0.0		
11/21/2011	07:48:45	470	0.9	8.36	470.1	0.0		
11/21/2011	07:49:35	357	0.9	8.36	470.8	0.0		
11/21/2011	07:50:25	439	0.9	8.36	471.5	0.0		
11/21/2011	07:51:15	419	0.9	8.36	472.3	0.0		
11/21/2011	07:52:05	422	0.9	8.36	473.0	0.0		
11/21/2011	07:52:55	395	0.9	8.36	473.7	0.0		
11/21/2011	07:53:45	386	0.9	8.36	474.5	0.0		
11/21/2011	07:54:35	417	0.9	8.35	475.2	0.0		
11/21/2011	07:55:25	455	0.9	8.35	475.9	0.0		
11/21/2011	07:56:15	467	0.9	8.35	476.7	0.0		

Well RGU 424-25-198			Field Ryan Gulch Unit		Job Start Nov/21/2011		Customer Williams	Job Number 672668
Date	Time 24-hr clock	Treating Pressure PSI	Flow Rate B/M	Density LB/G	Volume BBL	Solid Fraction NULL	Message	
11/21/2011	07:57:55	416	0.9	8.35	478.1	0.0		
11/21/2011	07:58:45	431	0.9	8.35	478.9	0.0		
11/21/2011	07:59:35	469	0.9	8.35	479.6	0.0		
11/21/2011	08:00:25	450	0.9	8.35	480.4	0.0		
11/21/2011	08:01:15	411	0.9	8.35	481.1	0.0		
11/21/2011	08:02:05	373	0.9	8.35	481.8	0.0		
11/21/2011	08:02:55	463	0.9	8.35	482.6	0.0		
11/21/2011	08:03:45	478	0.9	8.35	483.3	0.0		
11/21/2011	08:04:35	421	0.9	8.35	484.0	0.0		
11/21/2011	08:05:25	417	0.9	8.35	484.8	0.0		
11/21/2011	08:06:15	462	0.9	8.35	485.5	0.0		
11/21/2011	08:07:05	447	0.9	8.35	486.2	0.0		
11/21/2011	08:07:55	466	0.9	8.35	487.0	0.0		
11/21/2011	08:08:45	544	0.9	8.35	487.7	0.0		
11/21/2011	08:09:35	402	0.9	8.35	488.4	0.0		
11/21/2011	08:10:25	378	0.9	8.35	489.2	0.0		
11/21/2011	08:11:15	476	0.9	8.35	489.9	0.0		
11/21/2011	08:12:05	455	0.9	8.35	490.6	0.0		
11/21/2011	08:12:55	438	0.9	8.35	491.4	0.0		
11/21/2011	08:13:45	421	0.9	8.35	492.1	0.0		
11/21/2011	08:14:35	461	0.9	8.35	492.8	0.0		
11/21/2011	08:15:00	477	0.9	8.35	493.2	0.0	Bump Top Plug	
11/21/2011	08:15:25	524	0.9	8.35	493.6	0.0		
11/21/2011	08:16:00	455	0.9	8.35	494.1	0.0	Floats Hold	
11/21/2011	08:16:15	543	0.9	8.35	494.3	0.0		
11/21/2011	08:17:05	558	0.9	8.35	495.0	0.0		
11/21/2011	08:17:55	400	0.9	8.35	495.8	0.0		
11/21/2011	08:18:45	677	0.9	8.35	496.5	0.0		
11/21/2011	08:19:35	1386	0.0	8.36	497.0	0.0		
11/21/2011	08:20:25	1384	0.0	8.35	497.0	0.0		
11/21/2011	08:21:15	1406	0.0	8.35	497.0	0.0		
11/21/2011	08:22:05	1413	0.0	8.36	497.0	0.0		
11/21/2011	08:22:55	30	0.0	8.36	497.0	0.0		
11/21/2011	08:23:45	32	0.0	8.36	497.0	0.0		
11/21/2011	08:24:35	38	0.0	8.36	497.0	0.0		
11/21/2011	08:25:25	248	0.0	8.36	497.0	0.0		
11/21/2011	08:26:15	38	0.0	8.35	497.0	0.0		
11/21/2011	08:27:05	89	0.0	8.35	497.0	0.0		
11/21/2011	08:27:55	416	0.0	8.35	497.0	0.0		
11/21/2011	08:28:45	34	0.0	8.35	497.0	0.0		
11/21/2011	08:29:35	33	0.0	8.36	497.0	0.0		
11/21/2011	08:30:25	33	0.0	8.36	497.0	0.0		
11/21/2011	08:31:15	33	0.0	8.36	497.0	0.0		
11/21/2011	08:32:05	33	0.0	8.36	497.0	0.0		
11/21/2011	08:32:55	33	0.0	8.36	497.0	0.0		
11/21/2011	08:33:45	33	0.0	8.36	497.0	0.0		
11/21/2011	08:34:35	33	0.0	8.36	497.0	0.0		
11/21/2011	08:35:25	33	0.0	8.36	497.0	0.0		
11/21/2011	08:36:15	33	0.0	8.36	497.0	0.0		
11/21/2011	08:37:05	33	0.0	8.36	497.0	0.0		
11/21/2011	08:37:55	33	0.0	8.36	497.0	0.0		
11/21/2011	08:38:45	33	0.0	8.36	497.0	0.0		
11/21/2011	08:39:35	33	0.0	8.36	497.0	0.0		
11/21/2011	08:40:25	33	0.0	8.36	497.0	0.0		

Well RGU 424-25-198			Field Ryan Gulch Unit		Job Start Nov/21/2011		Customer Williams	Job Number 672668
Date	Time 24-hr clock	Treating Pressure PSI	Flow Rate B/M	Density LB/G	Volume BBL	Solid Fraction NULL	Message	
11/21/2011	08:42:05	33	0.0	8.36	497.0	0.0		
11/21/2011	08:42:55	33	0.0	8.36	497.0	0.0		
11/21/2011	08:43:45	33	0.0	8.36	497.0	0.0		
11/21/2011	08:44:35	33	0.0	8.36	497.0	0.0		
11/21/2011	08:45:25	33	0.0	8.36	497.0	0.0		
11/21/2011	08:46:15	33	0.0	8.36	497.0	0.0		
11/21/2011	08:47:05	33	0.0	8.36	497.0	0.0		
11/21/2011	08:47:55	33	0.0	8.36	497.0	0.0		
11/21/2011	08:49:35	33	0.0	8.36	497.0	0.0		
11/21/2011	08:50:25	33	0.0	8.36	497.0	0.0		
11/21/2011	08:51:15	33	0.0	8.36	497.0	0.0		
11/21/2011	08:52:05	33	0.0	8.36	497.0	0.0		
11/21/2011	08:52:55	33	0.0	8.36	497.0	0.0		
11/21/2011	08:53:45	33	0.0	8.36	497.0	0.0		
11/21/2011	08:54:35	33	0.0	8.36	497.0	0.0		
11/21/2011	08:55:25	33	0.0	8.36	497.0	0.0		
11/21/2011	08:56:15	33	0.0	8.36	497.0	0.0		
11/21/2011	08:57:05	33	0.0	8.35	497.0	0.0		
11/21/2011	08:57:55	33	0.0	8.36	497.0	0.0		
11/21/2011	08:58:45	33	0.0	8.36	497.0	0.0		
11/21/2011	08:59:35	33	0.0	8.36	497.0	0.0		
11/21/2011	09:00:25	33	0.0	8.36	497.0	0.0		
11/21/2011	09:01:15	33	0.0	8.36	497.0	0.0		
11/21/2011	09:02:05	33	0.0	8.35	497.0	0.0		
11/21/2011	09:02:55	33	0.0	8.36	497.0	0.0		
11/21/2011	09:03:45	33	0.0	8.35	497.0	0.0		
11/21/2011	09:04:35	32	0.0	8.35	497.0	0.0		
11/21/2011	09:05:25	33	0.0	8.35	497.0	0.0		
11/21/2011	09:07:05	33	0.0	8.35	497.0	0.0		
11/21/2011	09:07:55	32	0.0	8.35	497.0	0.0		
11/21/2011	09:08:45	33	0.0	8.35	497.0	0.0		
11/21/2011	09:09:35	32	0.0	8.35	497.0	0.0		
11/21/2011	09:10:25	32	0.0	8.35	497.0	0.0		
11/21/2011	09:11:15	32	0.0	8.35	497.0	0.0		
11/21/2011	09:12:05	32	0.0	8.35	497.0	0.0		
11/21/2011	09:12:55	32	0.0	8.35	497.0	0.0		
11/21/2011	09:13:45	32	0.0	8.35	497.0	0.0		
11/21/2011	09:14:35	32	0.0	8.35	497.0	0.0		
11/21/2011	09:15:25	32	0.0	8.35	497.0	0.0		
11/21/2011	09:16:15	32	0.0	8.35	497.0	0.0		
11/21/2011	09:17:05	32	0.0	8.35	497.0	0.0		
11/21/2011	09:17:55	32	0.0	8.35	497.0	0.0		
11/21/2011	09:18:45	31	0.0	8.35	497.0	0.0		
11/21/2011	09:19:35	32	0.0	8.35	497.0	0.0		
11/21/2011	09:20:25	32	0.0	8.35	497.0	0.0		
11/21/2011	09:21:15	32	0.0	8.35	497.0	0.0		
11/21/2011	09:22:05	32	0.0	8.35	497.0	0.0		
11/21/2011	09:22:55	31	0.0	8.35	497.0	0.0		
11/21/2011	09:23:45	32	0.0	8.35	497.0	0.0		
11/21/2011	09:24:35	32	0.0	8.35	497.0	0.0		
11/21/2011	09:25:25	32	0.0	8.35	497.0	0.0		
11/21/2011	09:26:15	32	0.0	8.35	497.0	0.0		
11/21/2011	09:27:05	32	0.0	8.35	497.0	0.0		
11/21/2011	09:27:55	32	0.0	8.36	497.0	0.0		

Well RGU 424-25-198			Field Ryan Gulch Unit		Job Start Nov/21/2011		Customer Williams	Job Number 672668
Date	Time 24-hr clock	Treating Pressure PSI	Flow Rate B/M	Density LB/G	Volume BBL	Solid Fraction NULL	Message	
11/21/2011	09:29:35	31	0.0	8.35	497.0	0.0		
11/21/2011	09:30:25	32	0.0	8.35	497.0	0.0		
11/21/2011	09:31:15	31	0.0	8.36	497.0	0.0		
11/21/2011	09:32:55	32	0.0	8.35	497.0	0.0		
11/21/2011	09:33:45	32	0.0	8.35	497.0	0.0		
11/21/2011	09:34:35	31	0.0	8.35	497.0	0.0		
11/21/2011	09:35:25	32	0.0	8.35	497.0	0.0		
11/21/2011	09:36:15	32	0.0	8.36	497.0	0.0		
11/21/2011	09:37:05	31	0.0	8.36	497.0	0.0		
11/21/2011	09:38:45	32	0.0	8.36	497.0	0.0		
11/21/2011	09:39:35	32	0.0	8.35	497.0	0.0		
11/21/2011	09:40:25	31	0.0	8.35	497.0	0.0		
11/21/2011	09:41:15	32	0.0	8.35	497.0	0.0		
11/21/2011	09:42:05	32	0.0	8.35	497.0	0.0		
11/21/2011	09:42:55	31	0.0	8.35	497.0	0.0		
11/21/2011	09:43:45	31	0.0	8.35	497.0	0.0		
11/21/2011	09:44:35	32	0.0	8.35	497.0	0.0		
11/21/2011	09:45:25	31	0.0	8.35	497.0	0.0		
11/21/2011	09:46:15	32	0.0	8.35	497.0	0.0		
11/21/2011	09:47:05	32	0.0	8.35	497.0	0.0		
11/21/2011	09:48:45	31	0.0	8.35	497.0	0.0		
11/21/2011	09:49:35	31	0.0	8.35	497.0	0.0		
11/21/2011	09:50:25	32	0.0	8.35	497.0	0.0		
11/21/2011	09:51:15	31	0.0	8.35	497.0	0.0		
11/21/2011	09:52:05	31	0.0	8.35	497.0	0.0		
11/21/2011	09:52:55	31	0.0	8.35	497.0	0.0		
11/21/2011	09:53:45	31	0.0	8.35	497.0	0.0		
11/21/2011	09:54:35	31	0.0	8.35	497.0	0.0		
11/21/2011	09:55:25	32	0.0	8.35	497.0	0.0		
11/21/2011	09:56:15	31	0.0	8.35	497.0	0.0		
11/21/2011	09:57:05	31	0.0	8.35	497.0	0.0		
11/21/2011	09:58:45	31	0.0	8.35	497.0	0.0		
11/21/2011	09:59:35	31	0.0	8.35	497.0	0.0		
11/21/2011	10:00:25	32	0.0	8.35	497.0	0.0		
11/21/2011	10:01:15	31	0.0	8.35	497.0	0.0		
11/21/2011	10:02:55	32	0.0	8.35	497.0	0.0		
11/21/2011	10:03:45	32	0.0	8.35	497.0	0.0		
11/21/2011	10:04:35	32	0.0	8.35	497.0	0.0		
11/21/2011	10:05:25	32	0.0	8.35	497.0	0.0		
11/21/2011	10:06:15	32	0.0	8.35	497.0	0.0		
11/21/2011	10:07:05	32	0.0	8.35	497.0	0.0		
11/21/2011	10:08:45	32	0.0	8.35	497.0	0.0		
11/21/2011	10:09:35	32	0.0	8.35	497.0	0.0		
11/21/2011	10:10:25	32	0.0	8.35	497.0	0.0		
11/21/2011	10:11:15	32	0.0	8.35	497.0	0.0		
11/21/2011	10:12:05	32	0.0	8.35	497.0	0.0		
11/21/2011	10:14:35	32	0.0	8.35	497.0	0.0		
11/21/2011	10:15:25	32	0.0	8.35	497.0	0.0		
11/21/2011	10:17:05	32	0.0	8.35	497.0	0.0		
11/21/2011	10:17:55	31	0.0	8.35	497.0	0.0		
11/21/2011	10:18:45	32	0.0	8.35	497.0	0.0		
11/21/2011	10:19:35	32	0.0	8.35	497.0	0.0		
11/21/2011	10:20:25	32	0.0	8.35	497.0	0.0		
11/21/2011	10:21:15	32	0.0	8.35	497.0	0.0		

Well RGU 424-25-198			Field Ryan Gulch Unit		Job Start Nov/21/2011	Customer Williams		Job Number 672668
Date	Time 24-hr clock	Treating Pressure PSI	Flow Rate B/M	Density LB/G	Volume BBL	Solid Fraction NULL	Message	
11/21/2011	10:23:45	32	0.0	8.35	497.0	0.0		
11/21/2011	10:24:35	32	0.0	8.35	497.0	0.0		
11/21/2011	10:25:25	32	0.0	8.35	497.0	0.0		
11/21/2011	10:27:05	32	0.0	8.35	497.0	0.0		
11/21/2011	10:27:55	32	0.0	8.35	497.0	0.0		
11/21/2011	10:28:45	32	0.0	8.35	497.0	0.0		
11/21/2011	10:29:35	32	0.0	8.35	497.0	0.0		
11/21/2011	10:30:25	32	0.0	8.35	497.0	0.0		
11/21/2011	10:31:15	32	0.0	8.35	497.0	0.0		
11/21/2011	10:32:55	32	0.0	8.35	497.0	0.0		
11/21/2011	10:34:35	32	0.0	8.35	497.0	0.0		
11/21/2011	10:35:25	32	0.0	8.35	497.0	0.0		
11/21/2011	10:36:15	32	0.0	8.35	497.0	0.0		
11/21/2011	10:37:05	32	0.0	8.35	497.0	0.0		
11/21/2011	10:37:55	32	0.0	8.35	497.0	0.0		
11/21/2011	10:38:45	32	0.0	8.35	497.0	0.0		
11/21/2011	10:39:35	32	0.0	8.35	497.0	0.0		
11/21/2011	10:40:25	32	0.0	8.35	497.0	0.0		
11/21/2011	10:41:15	32	0.0	8.35	497.0	0.0		
11/21/2011	10:42:05	31	0.0	8.35	497.0	0.0		
11/21/2011	10:42:55	32	0.0	8.35	497.0	0.0		
11/21/2011	10:43:45	32	0.0	8.35	497.0	0.0		
11/21/2011	10:44:35	32	0.0	8.35	497.0	0.0		
11/21/2011	10:45:25	32	0.0	8.35	497.0	0.0		
11/21/2011	10:46:15	32	0.0	8.35	497.0	0.0		
11/21/2011	10:47:05	32	0.0	8.35	497.0	0.0		
11/21/2011	10:47:55	32	0.0	8.35	497.0	0.0		
11/21/2011	10:48:45	32	0.0	8.35	497.0	0.0		
11/21/2011	10:49:35	32	0.0	8.35	497.0	0.0		
11/21/2011	10:50:25	32	0.0	8.35	497.0	0.0		
11/21/2011	10:51:15	32	0.0	8.35	497.0	0.0		
11/21/2011	10:52:05	32	0.0	8.35	497.0	0.0		
11/21/2011	10:52:55	32	0.0	8.35	497.0	0.0		
11/21/2011	10:53:45	32	0.0	8.35	497.0	0.0		
11/21/2011	10:54:35	32	0.0	8.35	497.0	0.0		
11/21/2011	10:55:25	32	0.0	8.35	497.0	0.0		
11/21/2011	10:56:15	32	0.0	8.35	497.0	0.0		
11/21/2011	10:57:05	32	0.0	8.35	497.0	0.0		
11/21/2011	10:57:55	32	0.0	8.35	497.0	0.0		
11/21/2011	10:58:45	32	0.0	8.35	497.0	0.0		
11/21/2011	10:59:35	32	0.0	8.35	497.0	0.0		
11/21/2011	11:00:25	32	0.0	8.35	497.0	0.0		
11/21/2011	11:01:15	32	0.0	8.35	497.0	0.0		
11/21/2011	11:02:05	32	0.0	8.35	497.0	0.0		
11/21/2011	11:03:45	32	0.0	8.35	497.0	0.0		
11/21/2011	11:04:35	32	0.0	8.35	497.0	0.0		
11/21/2011	11:05:25	32	0.0	8.35	497.0	0.0		
11/21/2011	11:06:15	31	0.0	8.35	497.0	0.0		
11/21/2011	11:07:05	32	0.0	8.35	497.0	0.0		
11/21/2011	11:07:55	32	0.0	8.35	497.0	0.0		
11/21/2011	11:08:45	32	0.0	8.35	497.0	0.0		
11/21/2011	11:09:35	32	0.0	8.35	497.0	0.0		
11/21/2011	11:10:25	32	0.0	8.35	497.0	0.0		
11/21/2011	11:11:15	32	0.0	8.35	497.0	0.0		

Well RGU 424-25-198			Field Ryan Gulch Unit		Job Start Nov/21/2011		Customer Williams	Job Number 672668
Date	Time 24-hr clock	Treating Pressure PSI	Flow Rate B/M	Density LB/G	Volume BBL	Solid Fraction NULL	Message	
11/21/2011	11:12:55	32	0.0	8.35	497.0	0.0		
11/21/2011	11:13:45	32	0.0	8.35	497.0	0.0		
11/21/2011	11:15:25	31	0.0	8.35	497.0	0.0		
11/21/2011	11:16:15	32	0.0	8.35	497.0	0.0		
11/21/2011	11:17:05	32	0.0	8.35	497.0	0.0		
11/21/2011	11:17:55	32	0.0	8.35	497.0	0.0		
11/21/2011	11:18:45	32	0.0	8.35	497.0	0.0		
11/21/2011	11:19:35	32	0.0	8.35	497.0	0.0		
11/21/2011	11:20:25	31	0.0	8.35	497.0	0.0		
11/21/2011	11:21:15	32	0.0	8.35	497.0	0.0		
11/21/2011	11:22:05	32	0.0	8.35	497.0	0.0		
11/21/2011	11:22:55	32	0.0	8.35	497.0	0.0		
11/21/2011	11:27:05	32	0.0	8.35	497.0	0.0		
11/21/2011	11:27:55	31	0.0	8.35	497.0	0.0		
11/21/2011	11:29:35	35	0.0	8.35	497.0	0.0		
11/21/2011	11:30:25	37	0.4	8.35	498.0	0.0		
11/21/2011	11:31:15	37	0.5	8.35	498.9	0.0		
11/21/2011	11:32:05	33	0.0	8.35	499.2	0.0		
11/21/2011	11:32:55	45	0.0	8.35	499.2	0.0		
11/21/2011	11:33:45	41	0.0	8.35	499.2	0.0		
11/21/2011	11:34:35	108	3.0	8.35	499.9	0.0		
11/21/2011	11:35:25	31	0.0	8.35	500.7	0.0		
11/21/2011	11:36:15	31	0.0	8.35	500.7	0.0		
11/21/2011	11:37:55	32	0.0	8.35	500.7	0.0		
11/21/2011	11:38:45	32	0.0	8.35	500.7	0.0		
11/21/2011	11:39:35	32	0.0	8.35	500.7	0.0		
11/21/2011	11:40:25	32	0.0	8.35	500.7	0.0		
11/21/2011	11:41:15	32	0.0	8.35	500.7	0.0		
11/21/2011	11:42:05	31	0.0	8.35	500.7	0.0		
11/21/2011	11:42:55	32	0.0	8.35	500.7	0.0		
11/21/2011	11:43:45	32	0.0	8.35	500.7	0.0		
11/21/2011	11:44:35	32	0.0	8.35	500.7	0.0		
11/21/2011	11:45:25	32	0.0	8.35	500.7	0.0		
11/21/2011	11:46:15	32	0.0	8.35	500.7	0.0		
11/21/2011	11:47:05	32	0.0	8.35	500.7	0.0		
11/21/2011	11:47:55	32	0.0	8.35	500.7	0.0		
11/21/2011	11:48:45	31	0.0	8.35	500.7	0.0		
11/21/2011	11:49:35	31	0.0	8.35	500.7	0.0		
11/21/2011	11:50:25	32	0.0	8.35	500.7	0.0		
11/21/2011	11:51:15	31	0.0	8.35	500.7	0.0		
11/21/2011	11:52:05	32	0.0	8.35	500.7	0.0		
11/21/2011	11:52:55	32	0.0	8.35	500.7	0.0		
11/21/2011	11:53:45	32	0.0	8.35	500.7	0.0		
11/21/2011	11:54:35	32	0.0	8.35	500.7	0.0		
11/21/2011	11:55:25	32	0.0	8.35	500.7	0.0		
11/21/2011	11:56:15	31	0.0	8.35	500.7	0.0		
11/21/2011	11:57:05	32	0.0	8.35	500.7	0.0		
11/21/2011	11:57:55	31	0.0	8.35	500.7	0.0		
11/21/2011	11:58:45	31	0.0	8.35	500.7	0.0		
11/21/2011	11:59:35	31	0.0	8.35	500.7	0.0		
11/21/2011	12:00:25	32	0.0	8.35	500.7	0.0		
11/21/2011	12:01:15	31	0.0	8.35	500.7	0.0		
11/21/2011	12:02:05	32	0.0	8.35	500.7	0.0		
11/21/2011	12:02:55	32	0.0	8.35	500.7	0.0		

Well RGU 424-25-198			Field Ryan Gulch Unit		Job Start Nov/21/2011		Customer Williams	Job Number 672668
Date	Time 24-hr clock	Treating Pressure PSI	Flow Rate B/M	Density LB/G	Volume BBL	Solid Fraction NULL	Message	
11/21/2011	12:04:35	32	0.0	8.35	500.7	0.0		
11/21/2011	12:05:25	32	0.0	8.35	500.7	0.0		
11/21/2011	12:06:15	32	0.0	8.35	500.7	0.0		
11/21/2011	12:07:05	32	0.0	8.35	500.7	0.0		
11/21/2011	12:07:55	32	0.0	8.35	500.7	0.0		
11/21/2011	12:08:45	32	0.0	8.35	500.7	0.0		
11/21/2011	12:09:35	32	0.0	8.35	500.7	0.0		
11/21/2011	12:10:25	32	0.0	8.35	500.7	0.0		
11/21/2011	12:11:15	32	0.0	8.35	500.7	0.0		
11/21/2011	12:12:05	32	0.0	8.35	500.7	0.0		
11/21/2011	12:12:55	32	0.0	8.35	500.7	0.0		
11/21/2011	12:14:35	32	0.0	8.35	500.7	0.0		
11/21/2011	12:15:25	32	0.0	8.35	500.7	0.0		
11/21/2011	12:16:15	32	0.0	8.35	500.7	0.0		
11/21/2011	12:17:05	32	0.0	8.35	500.7	0.0		
11/21/2011	12:17:55	32	0.0	8.35	500.7	0.0		
11/21/2011	12:18:45	33	0.0	8.35	500.7	0.0		
11/21/2011	12:19:35	32	0.0	8.35	500.7	0.0		
11/21/2011	12:21:15	32	0.0	8.35	500.7	0.0		
11/21/2011	12:22:05	32	0.0	8.35	500.7	0.0		
11/21/2011	12:22:55	32	0.0	8.35	500.7	0.0		
11/21/2011	12:23:45	32	0.0	8.35	500.7	0.0		
11/21/2011	12:25:25	32	0.0	8.35	500.7	0.0		
11/21/2011	12:26:15	31	0.0	8.35	500.7	0.0		
11/21/2011	12:27:05	32	0.0	8.35	500.7	0.0		
11/21/2011	12:27:55	32	0.0	8.35	500.7	0.0		
11/21/2011	12:28:45	32	0.0	8.35	500.7	0.0		
11/21/2011	12:29:35	31	0.0	8.35	500.7	0.0		
11/21/2011	12:30:25	32	0.0	8.35	500.7	0.0		
11/21/2011	12:31:15	32	0.0	8.35	500.7	0.0		
11/21/2011	12:32:05	31	0.0	8.35	500.7	0.0		
11/21/2011	12:32:55	32	0.0	8.35	500.7	0.0		
11/21/2011	12:33:45	32	0.0	8.35	500.7	0.0		
11/21/2011	12:34:35	31	0.0	8.35	500.7	0.0		
11/21/2011	12:35:25	32	0.0	8.35	500.7	0.0		
11/21/2011	12:36:15	32	0.0	8.35	500.7	0.0		
11/21/2011	12:37:05	32	0.0	8.35	500.7	0.0		
11/21/2011	12:38:45	32	0.0	8.35	500.7	0.0		
11/21/2011	12:39:35	32	0.0	8.35	500.7	0.0		
11/21/2011	12:40:25	32	0.0	8.35	500.7	0.0		
11/21/2011	12:41:15	32	0.0	8.35	500.7	0.0		
11/21/2011	12:42:05	32	0.0	8.35	500.7	0.0		
11/21/2011	12:42:55	32	0.0	8.35	500.7	0.0		
11/21/2011	12:43:45	32	0.0	8.35	500.7	0.0		
11/21/2011	12:44:35	32	0.0	8.35	500.7	0.0		
11/21/2011	12:45:25	32	0.0	8.35	500.7	0.0		
11/21/2011	12:46:15	32	0.0	8.35	500.7	0.0		
11/21/2011	12:47:05	32	0.0	8.35	500.7	0.0		
11/21/2011	12:47:55	32	0.0	8.35	500.7	0.0		
11/21/2011	12:48:45	32	0.0	8.35	500.7	0.0		
11/21/2011	12:49:35	32	0.0	8.35	500.7	0.0		
11/21/2011	12:51:00	32	0.0	8.35	500.7	0.0	Start Job	
11/21/2011	12:52:05	32	0.0	8.35	500.7	0.0		
11/21/2011	12:52:55	31	0.0	8.35	500.7	0.0		

Well RGU 424-25-198			Field Ryan Gulch Unit		Job Start Nov/21/2011		Customer Williams	Job Number 672668
Date	Time 24-hr clock	Treating Pressure PSI	Flow Rate B/M	Density LB/G	Volume BBL	Solid Fraction NULL	Message	
11/21/2011	12:54:35	28	0.0	8.35	500.7	0.0		
11/21/2011	12:55:00	43	0.0	8.35	500.7	0.0	Top Out With 8 bbls of 15.5	
11/21/2011	12:55:25	42	0.0	8.35	500.7	0.0		
11/21/2011	12:56:15	56	1.0	8.39	501.1	0.0		
11/21/2011	12:57:05	110	2.0	14.82	502.5	0.0		
11/21/2011	12:57:55	153	0.8	15.04	503.7	0.0		
11/21/2011	12:58:45	168	2.7	15.11	505.1	0.0		
11/21/2011	12:59:35	165	2.5	14.57	507.1	0.0		
11/21/2011	13:00:25	164	2.5	14.66	509.2	0.0		
11/21/2011	13:01:15	47	0.0	15.43	510.3	0.0		
11/21/2011	13:02:05	47	0.0	15.44	510.3	0.0		
11/21/2011	13:02:55	47	0.0	15.45	510.3	0.0		
11/21/2011	13:03:45	49	0.0	15.46	510.3	0.0		
11/21/2011	13:04:35	49	0.0	15.47	510.3	0.0		
11/21/2011	13:05:00	57	0.0	15.48	510.3	0.0	End Cement Slurry	
11/21/2011	13:05:25	293	2.9	15.33	510.8	0.0		
11/21/2011	13:06:15	135	0.0	-3.12	512.8	0.0		
11/21/2011	13:07:05	218	3.3	13.46	513.3	0.0		
11/21/2011	13:07:55	53	0.0	13.74	515.3	0.0		
11/21/2011	13:08:45	48	0.0	11.63	515.3	0.0		
11/21/2011	13:09:35	192	3.3	9.12	516.2	0.0		
11/21/2011	13:10:25	169	3.4	9.04	519.0	0.0		
11/21/2011	13:11:15	153	3.2	8.47	521.6	0.0		
11/21/2011	13:12:05	136	3.0	8.42	524.2	0.0		
11/21/2011	13:12:55	161	3.2	8.50	527.0	0.0		
11/21/2011	13:13:45	154	3.4	8.19	529.7	0.0		
11/21/2011	13:14:35	136	3.6	8.03	532.1	0.0		
11/21/2011	13:15:25	66	0.0	24.26	534.5	0.0		
11/21/2011	13:16:15	157	3.4	8.35	536.0	0.0		
11/21/2011	13:17:05	132	3.4	8.17	538.9	0.0		
11/21/2011	13:17:55	138	3.4	8.35	541.7	0.0		
11/21/2011	13:18:45	27	0.0	8.37	543.9	0.0		
11/21/2011	13:19:35	31	0.0	8.36	543.9	0.0		
11/21/2011	13:20:25	32	0.0	8.37	543.9	0.0		
11/21/2011	13:21:15	138	3.4	8.35	545.9	0.0		
11/21/2011	13:22:05	282	5.9	8.33	550.1	0.0		
11/21/2011	13:22:55	276	5.9	8.35	554.9	0.0		
11/21/2011	13:23:45	278	5.9	8.35	559.8	0.0		
11/21/2011	13:24:35	272	5.9	8.35	564.7	0.0		
11/21/2011	13:25:25	415	7.8	8.35	570.4	0.0		
11/21/2011	13:26:15	361	7.3	8.35	576.7	0.0		
11/21/2011	13:27:05	409	7.7	8.35	582.9	0.0		
11/21/2011	13:27:55	407	7.7	8.35	589.4	0.0		
11/21/2011	13:28:45	404	7.7	8.35	595.8	0.0		
11/21/2011	13:29:35	416	7.7	8.35	602.3	0.0		
11/21/2011	13:30:25	70	1.9	8.35	605.6	0.0		
11/21/2011	13:31:15	244	5.1	8.35	608.2	0.0		
11/21/2011	13:32:05	263	5.9	8.35	612.9	0.0		
11/21/2011	13:32:55	269	5.9	8.35	617.8	0.0		
11/21/2011	13:33:45	265	5.9	8.35	622.7	0.0		
11/21/2011	13:34:35	274	5.9	8.35	627.6	0.0		
11/21/2011	13:35:25	264	5.9	8.35	632.5	0.0		
11/21/2011	13:36:15	269	5.9	8.35	637.4	0.0		
11/21/2011	13:37:05	265	5.9	8.35	642.2	0.0		

Well			Field		Job Start	Customer	Job Number
RGU 424-25-198			Ryan Gulch Unit		Nov/21/2011	Williams	672668
Date	Time 24-hr clock	Treating Pressure PSI	Flow Rate B/M	Density LB/G	Volume BBL	Solid Fraction NULL	Message
11/21/2011	13:38:45	30	0.0	8.35	644.9	0.0	
11/21/2011	13:39:35	238	0.0	8.35	0.0	0.0	
11/21/2011	13:40:25	404	0.0	8.35	0.0	0.0	
11/21/2011	13:41:15	31	0.0	8.35	0.0	0.0	
11/21/2011	13:42:05	33	0.0	8.35	0.0	0.0	
11/21/2011	13:42:55	33	0.0	0.03	0.0	0.0	
11/21/2011	13:43:45	33	0.0	8.36	0.0	0.0	
11/21/2011	13:44:35	34	0.0	0.04	0.0	0.0	
11/21/2011	13:45:25	34	0.0	0.02	0.0	0.0	
11/21/2011	13:46:15	32	0.0	0.29	0.0	0.0	
11/21/2011	13:47:05	33	0.0	0.04	0.0	0.0	
11/21/2011	13:47:55	32	0.0	0.03	0.0	0.0	
11/21/2011	13:48:45	32	0.0	0.02	0.0	0.0	
11/21/2011	13:49:35	32	0.0	0.02	0.0	0.0	
11/21/2011	13:50:25	32	0.0	0.02	0.0	0.0	

Post Job Summary

Average Pump Rates, bbl/min					Volume of Fluid Injected, bbl						
Slurry	N2	Mud	Maximum Rate		Total Slurry	Mud	Spacer	N2			
Treating Pressure Summary, psi					Breakdown Fluid						
Maximum	Final 0	Average	Bump Plug to	Breakdown	Type	Volume bbl		Density lb/gal			
Avg. N2 Percent %	Designed Slurry Volume 0.0 bbl		Displacement bbl	Mix Water Temp degF	Cement Circulated to Surface? <input type="checkbox"/>		Volume bbl				
					Washed Thru Perfs <input type="checkbox"/>		To ft				
Customer or Authorized Representative Kenny Bascom			Schlumberger Supervisor Jeff Eulberg			Circulation Lost <input type="checkbox"/>	Job Completed <input type="checkbox"/>				
						-	-				