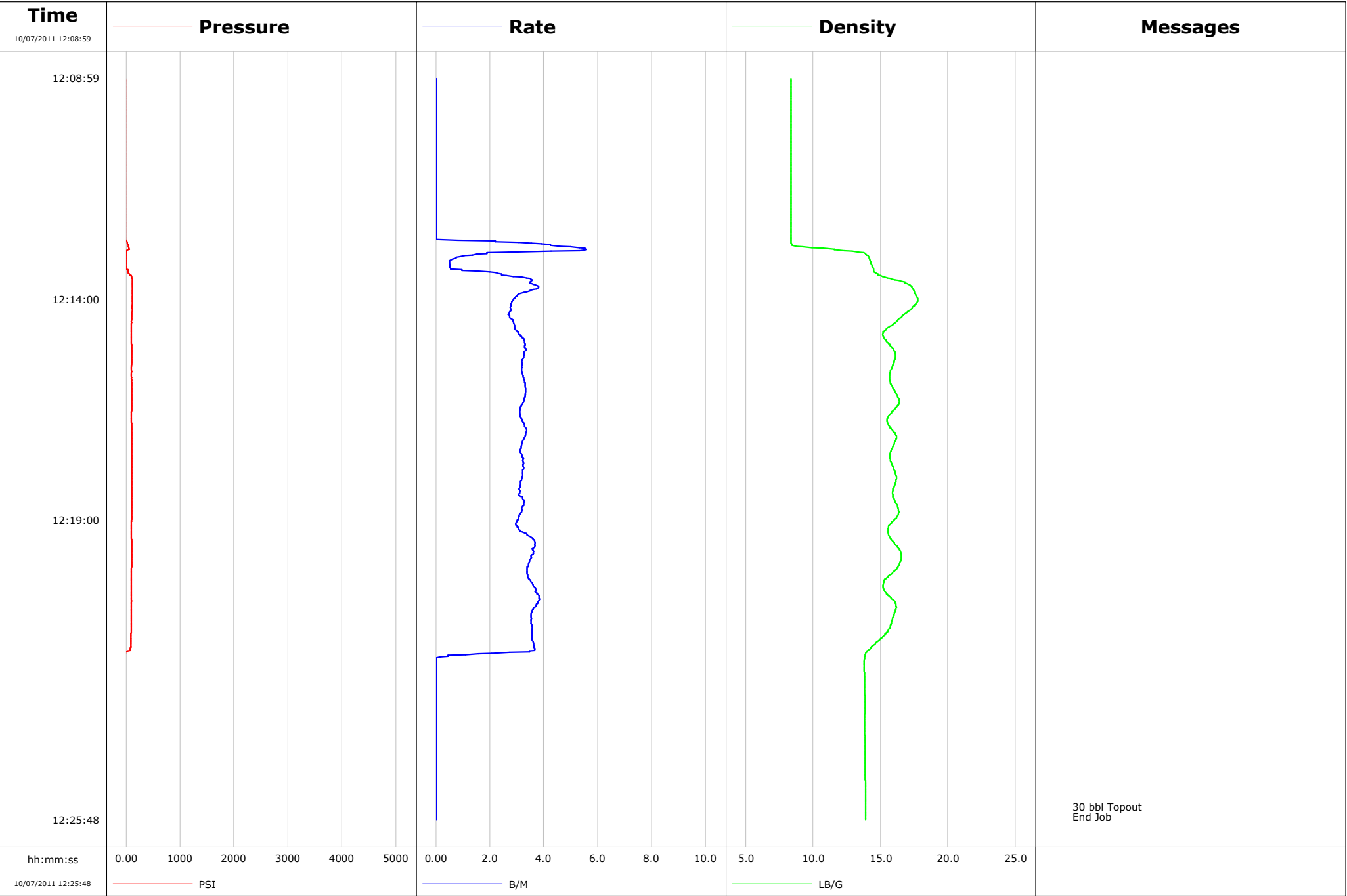


Well	RGU 331-1-298 Topout	Client	Williams
Field	Ryan Gulch Unit	SIR No.	BUNM-00254
Engineer	Ryan Bowditch	Job Type	9 5/8" 2-Stage Topout
Country	United States	Job Date	10-07-2011



Cementing Service Report

					Customer Williams		Job Number BUNM-00254	
Well RGU 331-1-298 Topout			Location (legal)		Schlumberger Location Grand Junction, CO		Job Start Oct/07/2011	
Field Ryan Gulch Unit		Formation Name/Type		Deviation deg	Bit Size in	Well MD ft	Well TVD ft	
County Rio Blanco		State/Province Colorado		BHP psi	BHST degF	BHCT degF	Pore Press. Gradient lb/gal	
Well Master		API/UWI						
Rig Name	Drilled For	Service Via		Casing/ Liner				
				Depth, ft	Size, in	Weight, lb/ft	Grade	Thread
Offshore Zone	Well Class	Well Type						
Drilling Fluid Type		Max. Density lb/gal	Plastic Viscosity cP	Tubing/Drill Pipe				
				T/D	Depth, ft	Size, in	Weight, lb/ft	Grade
Service Line Cementing	Job Type 9 5/8" 2-Stage Topout							
Max. Allowed Tub. Press psi	Max. Allowed Ann. Press psi	WH Connection		Perforations/Open Hole				
				Top, ft	Bottom, ft	shot/ft	No. of Shots	Total Interval ft
Service Instructions				ft	ft			
				ft	ft			Diameter in
				ft	ft			
				Treat Down	Displacement bbl	Packer Type	Packer Depth ft	
				Tubing Vol. bbl	Casing Vol. bbl	Annular Vol. bbl	Openhole Vol. bbl	
Casing/Tubing Secured <input type="checkbox"/>		1 Hole Vol. Circulated prior to Cement <input type="checkbox"/>		Casing Tools			Squeeze Job	
Lift Pressure psi				Shoe Type			Squeeze Type	
Pipe Rotated <input type="checkbox"/>		Pipe Reciprocated <input type="checkbox"/>		Shoe Depth ft			Tool Type	
No. Centralizers		Top Plugs	Bottom Plugs	Stage Tool Type			Tool Depth ft	
Cement Head Type				Stage Tool Depth ft			Tail Pipe Size in	
Job Scheduled For Oct/07/2011		Arrived on Location Oct/07/2011		Leave Location Oct/07/2011		Collar Type		
						Tail Pipe Depth ft		
						Collar Depth ft		
						Sqz. Total Vol. bbl		
Date	Time 24-hr clock	Treating Pressure PSI	Flow Rate B/M	Density LB/G	Volume BBL	Solid Fraction NULL	Message	
10/07/2011	12:08:59	-13	0.0	8.38	554.0	0	Started Acquisition	
10/07/2011	12:10:39	-13	0.0	8.38	554.0	0		
10/07/2011	12:12:19	-16	0.0	8.38	554.0	0		
10/07/2011	12:13:59	117	2.9	17.75	557.4	55		
10/07/2011	12:15:39	102	3.2	15.73	562.5	43		
10/07/2011	12:17:19	104	3.2	15.96	567.9	39		
10/07/2011	12:18:59	103	3.1	16.10	573.2	37		
10/07/2011	12:20:39	96	3.7	15.39	578.9	39		
10/07/2011	12:22:19	-25	0.0	13.78	584.0	0		
10/07/2011	12:23:59	-25	0.0	13.84	584.0	0		
10/07/2011	12:25:31	-23	0.0	13.90	584.0	0	30 bbl Topout	
10/07/2011	12:25:39	-21	0.0	13.90	584.0	0		

Well RGU 331-1-298 Topout	Field Ryan Gulch Unit	Job Start Oct/07/2011	Customer Williams	Job Number BUNM-00254
-------------------------------------	---------------------------------	---------------------------------	-----------------------------	---------------------------------

Post Job Summary

Average Pump Rates, bbl/min					Volume of Fluid Injected, bbl					
Slurry 3.2	N2	Mud	Maximum Rate 5.6		Total Slurry 30.0	Mud 0.0	Spacer 30.0	N2		
Treating Pressure Summary, psi					Breakdown Fluid					
Maximum 118	Final -21	Average 99	Bump Plug to	Breakdown	Type		Volume bbl		Density lb/gal	
Avg. N2 Percent %		Designed Slurry Volume 0.0 bbl		Displacement 0.0 bbl		Mix Water Temp degF		Cement Circulated to Surface? <input type="checkbox"/>		Volume bbl
								Washed Thru Perfs <input type="checkbox"/>		To ft
Customer or Authorized Representative Andrew Bunk				Schlumberger Supervisor Ryan Bowditch				Circulation Lost <input type="checkbox"/>		Job Completed <input type="checkbox"/>
								-		-