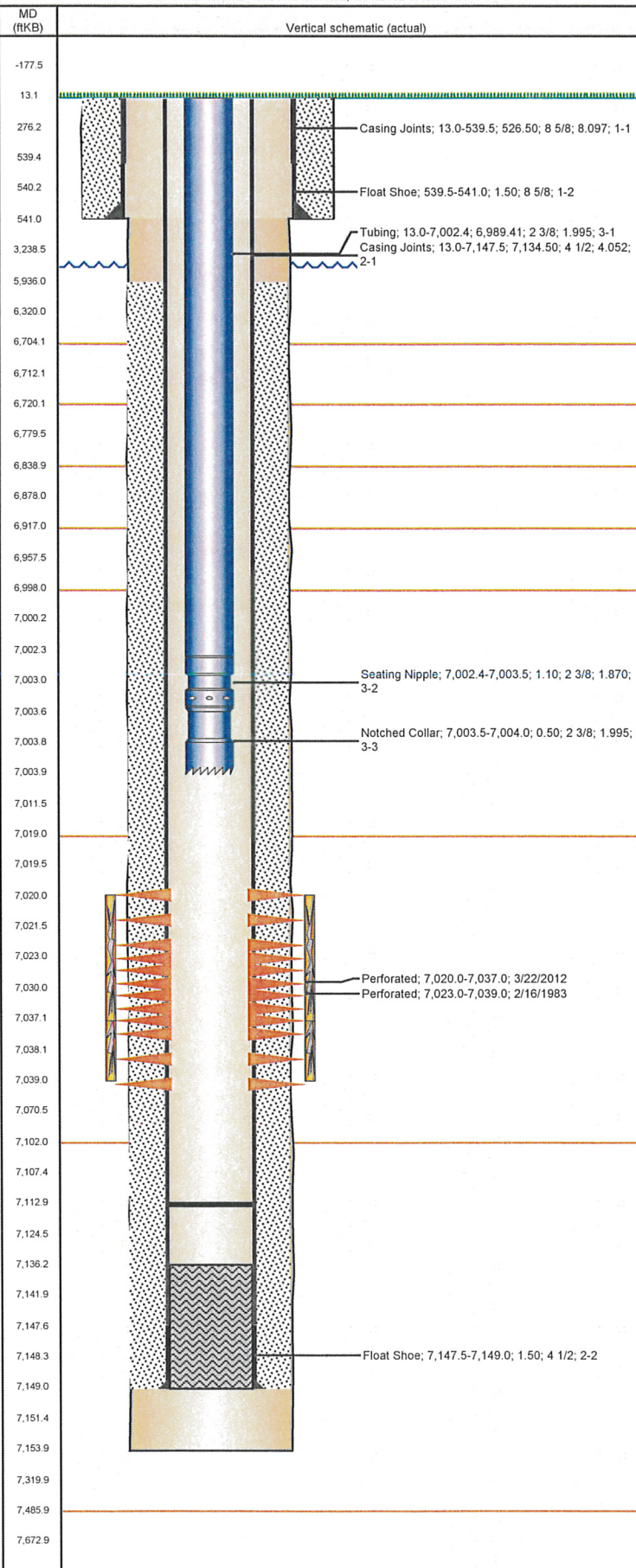


Well Name: FRANKLIN 28-01

VERTICAL - ORIGINAL HOLE, 7/11/2012 9:49:38 AM



Well Header

API	Business Unit	District	Well Config
05-123-10995	WATTENBERG	15	VERTICAL
Original KB Elevation (ft)	KB - GL / MSL (ftKB)	Spud Date	P & A Date
4,673.00	13.00	1/22/1983	

Comment

Directions To Well
WCR 43 AND WCR 52, NORTH 1/10, WEST TO BATTERY, SOUTH 200' INTO
Current PBTD (ftKB)
ORIGINAL HOLE - 7,113.0

Surface Location (Congressional)

Quarter 1	Quarter 2	Quarter 3	Quarter 4	Section	Township	Twship N...	Range	Rng E/W Dir
		SE	SE	28	5	N	65	W

Bottom Hole Location

North-South Distance (ft)	From N or S Line	East-West Distance (ft)	From E or W Line

Plug Back Total Depths

Date	Depth (ftKB)	Method	Com
1/30/1983	7,136.0	TAG	LATCH DOWN COLLAR
3/20/2012	7,113.0	TAG	CLEANED OUT AFTER FISHING JOB BEFORE RE...

Wellbore Sections

Section Des	Size (in)	Act Top (ftKB)	Act Btm (ftKB)
SURFACE	12 1/4	13.0	541.0
PRODUCTION	7 7/8	541.0	7,154.0

Zone Statuses

Zone Name	Status Date	Status	Job
CODELL	3/14/1983	PR	DRILLING/COMPLETION - ORIGINAL, 1/22/1983 00:00
CODELL	4/30/2012	PR	RE-FRAC, 2/29/2012 06:00

Casing Strings

Csg Des	Run Date	OD (in)	Wt/Len (lb/ft)	Grade	Top (ftKB)	Set Depth (ftKB)
Surface	1/22/1983	8 5/8	24.00		13.0	541.0
Production	1/30/1983	4 1/2	10.50	J-55	13.0	7,149.0

Cement

Des	Top (ftKB)	Btm (ftKB)
SURFACE CASING CEMENT	13.0	541.0
PRODUCTION CASING CEMENT	5,936.0	7,149.0

Tubing Components

Item Des	OD (in)	Wt (lb/ft)	Grade	Jts	Len (ft)
Tubing	2 3/8	4.70	J-55	225	6,989.41
Seating Nipple	2 3/8	4.70	j-55	1	1.10
Notched Collar	2 3/8	4.70	J-55	1	0.50

Perforation Data

Zone	Bnch/St g	Entered Shot Total	Top (ftKB)	Btm (ftKB)	Date
CODELL, ORIGINAL HOLE		64	7,020.0	7,037.0	3/22/2012
CODELL, ORIGINAL HOLE		16	7,023.0	7,039.0	2/16/1983

Stimulations & Treatments

Bnch/Stg	Date	Zone	Primary Job Type
	2/21/1983	CODELL, ORIGINAL HOLE	DRILLING/COMPLETION - ORIGINAL

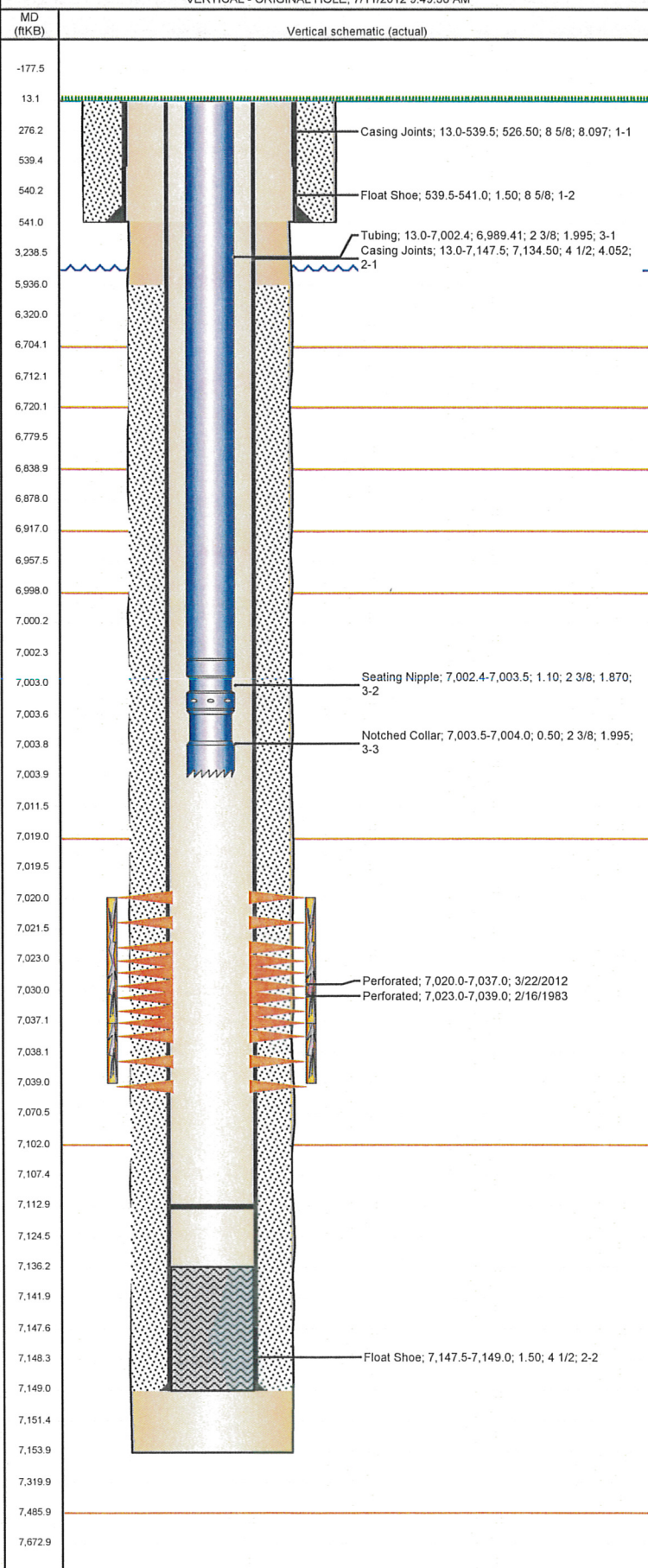
Comment

SCREENED OUT DURING FLUSH

Total Add Amount	Total Clean Volume...	Vol Slurry Tot (gal)	Vol Gas Tot (MCF)
Proppant 160000 lb; Proppant 100 MESH 15000 lb		115038.00	
Avg Treat Pressure (psi)	Max Treat Pressure (psi)	Avg Treat Rate (bbl/min)	Max Treat Rate (bbl/min)
6,700.0	7,200.0	11.00	12.00

Well Name: FRANKLIN 28-01

VERTICAL - ORIGINAL HOLE, 7/11/2012 9:49:38 AM



Stimulations & Treatments

Bnch/Stg	Date	Zone	Primary Job Type
	3/25/2012	CODELL, ORIGINAL HOLE	RE-FRAC
<p>Comment (CODELL RF)</p> <p>OPEN WELL WITH NO PRESSURE, 16.5 BBL TO LOAD WELL, FORMATION BREAK 4154 PSI @ 6.1 BPM.</p> <p>PRE-TREATMENT ISIP= 2531 PSI, 5 MIN= 1259 PSI, FG= .79 PSI/FT. INCREASE RATE TO 18 BPM DUE TO 5 MIN PRESSURE BELOW 1500 PSI MARGIN.</p> <p>CHEM ADD TRUCK SHUTDOWN TOWARDS END OF 2 - 4 PSA RAMP, FLUSH WELL AND SHUTDOWN TO GET IT FIXED DOWN FOR 3 MIN. CHEM ADD TRUCK SHUTDOWN AGAIN FLUSH WELL AND SHUTDOWN TO FIXED IT, DOWN FOR 10 MIN. BURNED MOST OF EXCESS WATER DUE TO HAVING TO FLUSH WELL TWICE HAVING TO INCREASE 4 PSA TO 4.3 PSA, LEFT 18000 LBS ON SAND MASTER.</p> <p>POST-TREATMENT ISIP= 3639 PSI, 5 MIN= 3299 PSI.</p> <p>TREATMENT AVGS: VISC= 21.7 CP, PH= 10.22, TEMP= 70.05 F, PRESS= 5684 PSI, RATE= 21.7 BPM, MAX: PRESS= 6680 PSI, RATE= 19.3 PSI.</p>			
Total Add Amount		Total Clean Volume...	Vol Slurry Tot (gal)
Ottawa 230176.104 lb		128624.58	138507.60
Avg Treat Pressure (psi)	Max Treat Pressure (psi)	Avg Treat Rate (bbl/min)	Max Treat Rate (bbl/min)
5,684.0	6,680.0	18.80	19.30

Other In Hole

Run Date	Des	OD (in)	Top (ftKB)	Btm (ftKB)

Logs

Date	Type	Top (ftKB)	Btm (ftKB)
1/29/1983	Compensated Density	4,200.0	7,152.0
1/29/1983	Induction	541.0	7,149.0
2/7/1983	Cement Bond	5,800.0	7,118.0
3/21/2012	CBL/CCL/GR	5,750.0	6,937.0