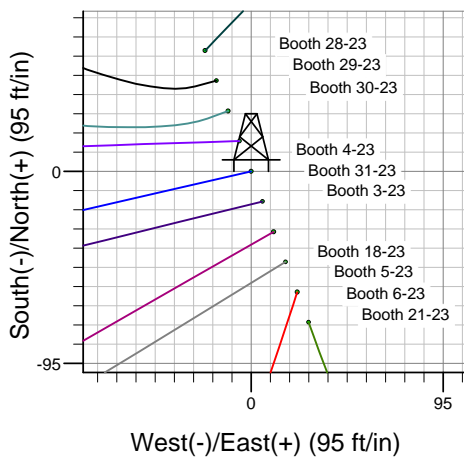
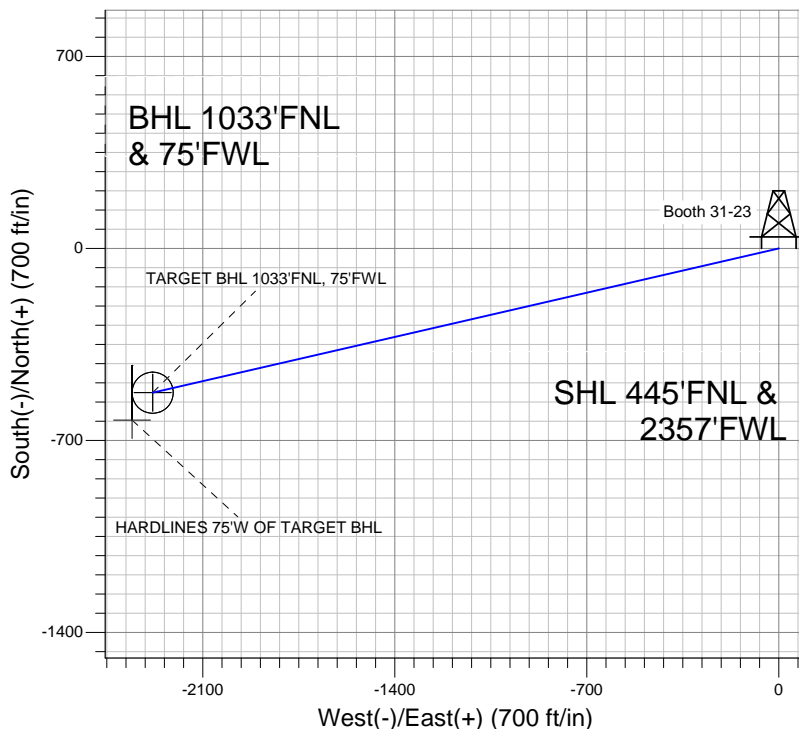
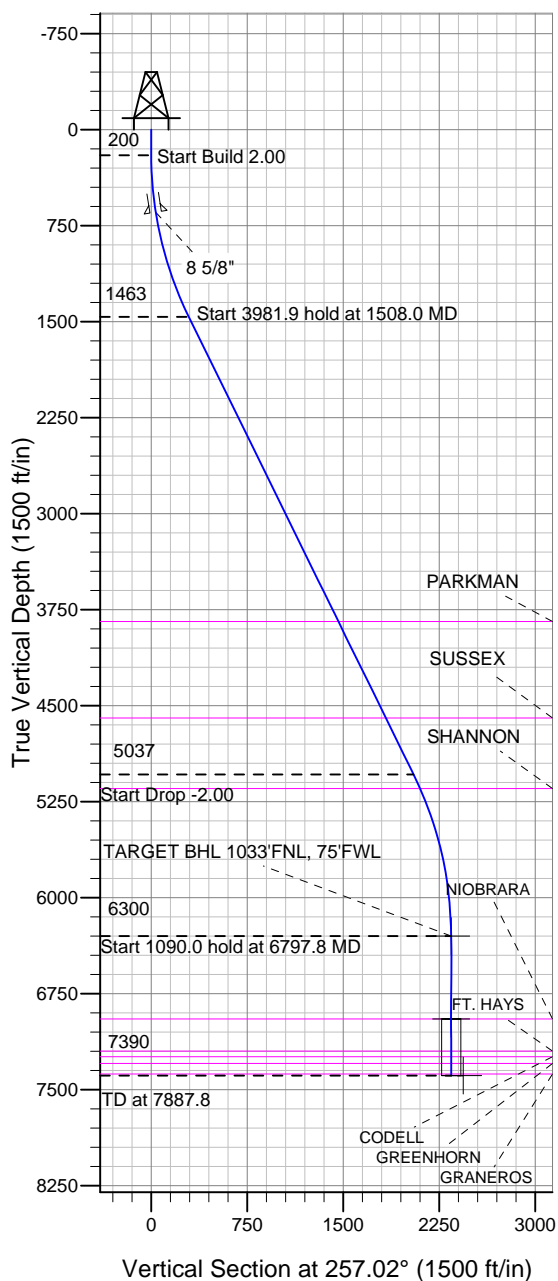


Well Name: Booth 31-23

Surface Location: Booth 10 Pad Sec.23-T7N-R65W
North American Datum 1983, US State Plane 1983 Colorado Northern Zone
Ground Elevation: 4896.0

+N/-S	+E/-W	Northing	Easting	Latitude	Longitude	Slot
0.0	0.0	1449891.85	3241363.56	40.565107	-104.631247	
		Original Well Elev	WELL @ 4912.0ft (Original Well Elev)			

BAYSWATER EXPLORATION & PRODUCTION



Booth 10 Pad Sec.23-T7N-R65W
Booth 31-23
Plan #1 (5-07-12)
13:42, May 11 2012



Azimuths to True North
Magnetic North: 8.69°
Magnetic Field
Strength: 53137.0nT
Dip Angle: 67.18°
Date: 5/7/2012
Model: IGRF2010

WELLBORE TARGET DETAILS (LAT/LONG)

Name	TVD	+N/-S	+E/-W	Latitude	Longitude	Shape
TARGET BHL 1033'FNL, 75'FWL	6300.0	-526.0	-2282.5	40.563663	-104.639462	Point
TARGET CIRCLE 1033'FNL & 75'FWL	6947.0	-526.0	-2282.5	40.563663	-104.639462	Circle (Radius: 75.0)
HARDLINES 75'W OF TARGET BHL	7390.0	-626.0	-2357.5	40.563388	-104.639732	Polygon

SECTION DETAILS

Sec	MD	Inc	Azi	TVD	+N/-S	+E/-W	DLeg	TFace	VSec	Target
1	0.0	0.00	0.00	0.0	0.0	0.0	0.00	0.00	0.0	
2	200.0	0.00	0.00	200.0	0.0	0.0	0.00	0.00	0.0	
3	1508.0	26.16	257.02	1463.0	-65.9	-285.9	2.00	257.02	293.4	
4	5489.8	26.16	257.02	5037.0	-460.1	-1996.6	0.00	0.00	2048.9	
5	6797.8	0.00	0.00	6300.0	-526.0	-2282.5	2.00	180.00	2342.3	
6	7887.8	0.00	0.00	7390.0	-526.0	-2282.5	0.00	0.00	2342.3	TARGET BHL 1033'FNL, 75'FWL



BAYSWATER EXPLORATION & PRODUCTION

SEC.23-T7N-R65W

Booth 10 Pad Sec.23-T7N-R65W

Booth 31-23

Wellbore #1

Plan: Plan #1 (5-07-12)

Standard Planning Report

11 May, 2012

Database:	Landmark	Local Co-ordinate Reference:	Well Booth 31-23
Company:	BAYSWATER EXPLORATION & PRODUCTION	TVD Reference:	WELL @ 4912.0ft (Original Well Elev)
Project:	SEC.23-T7N-R65W	MD Reference:	WELL @ 4912.0ft (Original Well Elev)
Site:	Booth 10 Pad Sec.23-T7N-R65W	North Reference:	True
Well:	Booth 31-23	Survey Calculation Method:	Minimum Curvature
Wellbore:	Wellbore #1		
Design:	Plan #1 (5-07-12)		

Project	SEC.23-T7N-R65W, Weld County, CO		
Map System:	US State Plane 1983	System Datum:	Mean Sea Level
Geo Datum:	North American Datum 1983		Using Well Reference Point
Map Zone:	Colorado Northern Zone		Using geodetic scale factor

Booth 10 Pad Sec.23-T7N-R65W					
Site Position:		Northing:	1,449,951.39 ft	Latitude:	40.565271
From:	Lat/Long	Easting:	3,241,340.20 ft	Longitude:	-104.631329
Position Uncertainty:	0.0 ft	Slot Radius:	"	Grid Convergence:	0.56 °

Well	Booth 31-23					
Well Position	+N/-S	-59.8 ft	Northing:	1,449,891.85 ft	Latitude:	40.565107
	+E/-W	22.8 ft	Easting:	3,241,363.56 ft	Longitude:	-104.631247
Position Uncertainty		0.0 ft	Wellhead Elevation:	ft	Ground Level:	4,896.0 ft

Wellbore	Wellbore #1				
Magnetics	Model Name	Sample Date	Declination (°)	Dip Angle (°)	Field Strength (nT)
	IGRF2010	5/7/2012	8.69	67.18	53,137

Design	Plan #1 (5-07-12)			
Audit Notes:				
Version:	Phase:	PROTOTYPE	Tie On Depth:	0.0
Vertical Section:	Depth From (TVD) (ft)	+N/-S (ft)	+E/-W (ft)	Direction (°)
	0.0	0.0	0.0	257.02

Plan Sections										
Measured Depth (ft)	Inclination (°)	Azimuth (°)	Vertical Depth (ft)	+N/-S (ft)	+E/-W (ft)	Dogleg Rate (°/100ft)	Build Rate (°/100ft)	Turn Rate (°/100ft)	TFO (°)	Target
0.0	0.00	0.00	0.0	0.0	0.0	0.00	0.00	0.00	0.00	
200.0	0.00	0.00	200.0	0.0	0.0	0.00	0.00	0.00	0.00	
1,508.0	26.16	257.02	1,463.0	-65.9	-285.9	2.00	2.00	0.00	257.02	
5,489.8	26.16	257.02	5,037.0	-460.1	-1,996.6	0.00	0.00	0.00	0.00	
6,797.8	0.00	0.00	6,300.0	-526.0	-2,282.5	2.00	-2.00	0.00	180.00	TARGET BHL 1033
7,887.8	0.00	0.00	7,390.0	-526.0	-2,282.5	0.00	0.00	0.00	0.00	

Database:	Landmark	Local Co-ordinate Reference:	Well Booth 31-23
Company:	BAYSWATER EXPLORATION & PRODUCTION	TVD Reference:	WELL @ 4912.0ft (Original Well Elev)
Project:	SEC.23-T7N-R65W	MD Reference:	WELL @ 4912.0ft (Original Well Elev)
Site:	Booth 10 Pad Sec.23-T7N-R65W	North Reference:	True
Well:	Booth 31-23	Survey Calculation Method:	Minimum Curvature
Wellbore:	Wellbore #1		
Design:	Plan #1 (5-07-12)		

Planned Survey

Measured Depth (ft)	Inclination (°)	Azimuth (°)	Vertical Depth (ft)	+N/-S (ft)	+E/-W (ft)	Vertical Section (ft)	Dogleg Rate (°/100ft)	Build Rate (°/100ft)	Turn Rate (°/100ft)
0.0	0.00	0.00	0.0	0.0	0.0	0.0	0.00	0.00	0.00
40.0	0.00	0.00	40.0	0.0	0.0	0.0	0.00	0.00	0.00
80.0	0.00	0.00	80.0	0.0	0.0	0.0	0.00	0.00	0.00
120.0	0.00	0.00	120.0	0.0	0.0	0.0	0.00	0.00	0.00
160.0	0.00	0.00	160.0	0.0	0.0	0.0	0.00	0.00	0.00
200.0	0.00	0.00	200.0	0.0	0.0	0.0	0.00	0.00	0.00
240.0	0.80	257.02	240.0	-0.1	-0.3	0.3	2.00	2.00	0.00
280.0	1.60	257.02	280.0	-0.3	-1.1	1.1	2.00	2.00	0.00
320.0	2.40	257.02	320.0	-0.6	-2.4	2.5	2.00	2.00	0.00
360.0	3.20	257.02	359.9	-1.0	-4.4	4.5	2.00	2.00	0.00
400.0	4.00	257.02	399.8	-1.6	-6.8	7.0	2.00	2.00	0.00
440.0	4.80	257.02	439.7	-2.3	-9.8	10.0	2.00	2.00	0.00
480.0	5.60	257.02	479.6	-3.1	-13.3	13.7	2.00	2.00	0.00
520.0	6.40	257.02	519.3	-4.0	-17.4	17.9	2.00	2.00	0.00
560.0	7.20	257.02	559.1	-5.1	-22.0	22.6	2.00	2.00	0.00
600.0	8.00	257.02	598.7	-6.3	-27.2	27.9	2.00	2.00	0.00
640.0	8.80	257.02	638.3	-7.6	-32.9	33.7	2.00	2.00	0.00
646.8	8.94	257.02	645.0	-7.8	-33.9	34.8	2.00	2.00	0.00
8 5/8"									
680.0	9.60	257.02	677.8	-9.0	-39.1	40.1	2.00	2.00	0.00
720.0	10.40	257.02	717.1	-10.6	-45.9	47.1	2.00	2.00	0.00
760.0	11.20	257.02	756.4	-12.3	-53.2	54.6	2.00	2.00	0.00
800.0	12.00	257.02	795.6	-14.1	-61.0	62.6	2.00	2.00	0.00
840.0	12.80	257.02	834.7	-16.0	-69.4	71.2	2.00	2.00	0.00
880.0	13.60	257.02	873.6	-18.0	-78.3	80.3	2.00	2.00	0.00
920.0	14.40	257.02	912.4	-20.2	-87.7	90.0	2.00	2.00	0.00
960.0	15.20	257.02	951.1	-22.5	-97.7	100.2	2.00	2.00	0.00
1,000.0	16.00	257.02	989.6	-24.9	-108.1	111.0	2.00	2.00	0.00
1,040.0	16.80	257.02	1,028.0	-27.5	-119.1	122.3	2.00	2.00	0.00
1,080.0	17.60	257.02	1,066.2	-30.1	-130.7	134.1	2.00	2.00	0.00
1,120.0	18.40	257.02	1,104.3	-32.9	-142.7	146.5	2.00	2.00	0.00
1,160.0	19.20	257.02	1,142.1	-35.8	-155.3	159.3	2.00	2.00	0.00
1,200.0	20.00	257.02	1,179.8	-38.8	-168.4	172.8	2.00	2.00	0.00
1,240.0	20.80	257.02	1,217.3	-41.9	-181.9	186.7	2.00	2.00	0.00
1,280.0	21.60	257.02	1,254.6	-45.2	-196.0	201.2	2.00	2.00	0.00
1,320.0	22.40	257.02	1,291.7	-48.5	-210.6	216.2	2.00	2.00	0.00
1,360.0	23.20	257.02	1,328.6	-52.0	-225.7	231.7	2.00	2.00	0.00
1,400.0	24.00	257.02	1,365.2	-55.6	-241.3	247.7	2.00	2.00	0.00
1,440.0	24.80	257.02	1,401.6	-59.3	-257.5	264.2	2.00	2.00	0.00
1,480.0	25.60	257.02	1,437.8	-63.1	-274.0	281.2	2.00	2.00	0.00
1,508.0	26.16	257.02	1,463.0	-65.9	-285.9	293.4	2.00	2.00	0.00
1,520.0	26.16	257.02	1,473.8	-67.1	-291.1	298.7	0.00	0.00	0.00
1,560.0	26.16	257.02	1,509.7	-71.0	-308.3	316.4	0.00	0.00	0.00
1,600.0	26.16	257.02	1,545.6	-75.0	-325.5	334.0	0.00	0.00	0.00
1,640.0	26.16	257.02	1,581.5	-79.0	-342.7	351.6	0.00	0.00	0.00
1,680.0	26.16	257.02	1,617.4	-82.9	-359.8	369.3	0.00	0.00	0.00
1,720.0	26.16	257.02	1,653.3	-86.9	-377.0	386.9	0.00	0.00	0.00
1,760.0	26.16	257.02	1,689.2	-90.8	-394.2	404.5	0.00	0.00	0.00
1,800.0	26.16	257.02	1,725.1	-94.8	-411.4	422.2	0.00	0.00	0.00
1,840.0	26.16	257.02	1,761.0	-98.8	-428.6	439.8	0.00	0.00	0.00
1,880.0	26.16	257.02	1,796.9	-102.7	-445.8	457.5	0.00	0.00	0.00
1,920.0	26.16	257.02	1,832.8	-106.7	-463.0	475.1	0.00	0.00	0.00
1,960.0	26.16	257.02	1,868.7	-110.6	-480.1	492.7	0.00	0.00	0.00

Database:	Landmark	Local Co-ordinate Reference:	Well Booth 31-23
Company:	BAYSWATER EXPLORATION & PRODUCTION	TVD Reference:	WELL @ 4912.0ft (Original Well Elev)
Project:	SEC.23-T7N-R65W	MD Reference:	WELL @ 4912.0ft (Original Well Elev)
Site:	Booth 10 Pad Sec.23-T7N-R65W	North Reference:	True
Well:	Booth 31-23	Survey Calculation Method:	Minimum Curvature
Wellbore:	Wellbore #1		
Design:	Plan #1 (5-07-12)		

Planned Survey										
Measured Depth (ft)	Inclination (°)	Azimuth (°)	Vertical Depth (ft)	+N/-S (ft)	+E/-W (ft)	Vertical Section (ft)	Dogleg Rate (°/100ft)	Build Rate (°/100ft)	Turn Rate (°/100ft)	
2,000.0	26.16	257.02	1,904.6	-114.6	-497.3	510.4	0.00	0.00	0.00	
2,040.0	26.16	257.02	1,940.5	-118.6	-514.5	528.0	0.00	0.00	0.00	
2,080.0	26.16	257.02	1,976.4	-122.5	-531.7	545.6	0.00	0.00	0.00	
2,120.0	26.16	257.02	2,012.3	-126.5	-548.9	563.3	0.00	0.00	0.00	
2,160.0	26.16	257.02	2,048.2	-130.4	-566.1	580.9	0.00	0.00	0.00	
2,200.0	26.16	257.02	2,084.1	-134.4	-583.2	598.5	0.00	0.00	0.00	
2,240.0	26.16	257.02	2,120.1	-138.4	-600.4	616.2	0.00	0.00	0.00	
2,280.0	26.16	257.02	2,156.0	-142.3	-617.6	633.8	0.00	0.00	0.00	
2,320.0	26.16	257.02	2,191.9	-146.3	-634.8	651.4	0.00	0.00	0.00	
2,360.0	26.16	257.02	2,227.8	-150.2	-652.0	669.1	0.00	0.00	0.00	
2,400.0	26.16	257.02	2,263.7	-154.2	-669.2	686.7	0.00	0.00	0.00	
2,440.0	26.16	257.02	2,299.6	-158.2	-686.3	704.3	0.00	0.00	0.00	
2,480.0	26.16	257.02	2,335.5	-162.1	-703.5	722.0	0.00	0.00	0.00	
2,520.0	26.16	257.02	2,371.4	-166.1	-720.7	739.6	0.00	0.00	0.00	
2,560.0	26.16	257.02	2,407.3	-170.0	-737.9	757.2	0.00	0.00	0.00	
2,600.0	26.16	257.02	2,443.2	-174.0	-755.1	774.9	0.00	0.00	0.00	
2,640.0	26.16	257.02	2,479.1	-178.0	-772.3	792.5	0.00	0.00	0.00	
2,680.0	26.16	257.02	2,515.0	-181.9	-789.5	810.1	0.00	0.00	0.00	
2,720.0	26.16	257.02	2,550.9	-185.9	-806.6	827.8	0.00	0.00	0.00	
2,760.0	26.16	257.02	2,586.8	-189.8	-823.8	845.4	0.00	0.00	0.00	
2,800.0	26.16	257.02	2,622.7	-193.8	-841.0	863.0	0.00	0.00	0.00	
2,840.0	26.16	257.02	2,658.6	-197.8	-858.2	880.7	0.00	0.00	0.00	
2,880.0	26.16	257.02	2,694.5	-201.7	-875.4	898.3	0.00	0.00	0.00	
2,920.0	26.16	257.02	2,730.4	-205.7	-892.6	915.9	0.00	0.00	0.00	
2,960.0	26.16	257.02	2,766.3	-209.6	-909.7	933.6	0.00	0.00	0.00	
3,000.0	26.16	257.02	2,802.2	-213.6	-926.9	951.2	0.00	0.00	0.00	
3,040.0	26.16	257.02	2,838.1	-217.6	-944.1	968.9	0.00	0.00	0.00	
3,080.0	26.16	257.02	2,874.0	-221.5	-961.3	986.5	0.00	0.00	0.00	
3,120.0	26.16	257.02	2,909.9	-225.5	-978.5	1,004.1	0.00	0.00	0.00	
3,160.0	26.16	257.02	2,945.8	-229.4	-995.7	1,021.8	0.00	0.00	0.00	
3,200.0	26.16	257.02	2,981.7	-233.4	-1,012.8	1,039.4	0.00	0.00	0.00	
3,240.0	26.16	257.02	3,017.6	-237.4	-1,030.0	1,057.0	0.00	0.00	0.00	
3,280.0	26.16	257.02	3,053.5	-241.3	-1,047.2	1,074.7	0.00	0.00	0.00	
3,320.0	26.16	257.02	3,089.4	-245.3	-1,064.4	1,092.3	0.00	0.00	0.00	
3,360.0	26.16	257.02	3,125.3	-249.2	-1,081.6	1,109.9	0.00	0.00	0.00	
3,400.0	26.16	257.02	3,161.2	-253.2	-1,098.8	1,127.6	0.00	0.00	0.00	
3,440.0	26.16	257.02	3,197.1	-257.2	-1,116.0	1,145.2	0.00	0.00	0.00	
3,480.0	26.16	257.02	3,233.0	-261.1	-1,133.1	1,162.8	0.00	0.00	0.00	
3,520.0	26.16	257.02	3,268.9	-265.1	-1,150.3	1,180.5	0.00	0.00	0.00	
3,560.0	26.16	257.02	3,304.8	-269.0	-1,167.5	1,198.1	0.00	0.00	0.00	
3,600.0	26.16	257.02	3,340.8	-273.0	-1,184.7	1,215.7	0.00	0.00	0.00	
3,640.0	26.16	257.02	3,376.7	-277.0	-1,201.9	1,233.4	0.00	0.00	0.00	
3,680.0	26.16	257.02	3,412.6	-280.9	-1,219.1	1,251.0	0.00	0.00	0.00	
3,720.0	26.16	257.02	3,448.5	-284.9	-1,236.2	1,268.6	0.00	0.00	0.00	
3,760.0	26.16	257.02	3,484.4	-288.8	-1,253.4	1,286.3	0.00	0.00	0.00	
3,800.0	26.16	257.02	3,520.3	-292.8	-1,270.6	1,303.9	0.00	0.00	0.00	
3,840.0	26.16	257.02	3,556.2	-296.7	-1,287.8	1,321.5	0.00	0.00	0.00	
3,880.0	26.16	257.02	3,592.1	-300.7	-1,305.0	1,339.2	0.00	0.00	0.00	
3,920.0	26.16	257.02	3,628.0	-304.7	-1,322.2	1,356.8	0.00	0.00	0.00	
3,960.0	26.16	257.02	3,663.9	-308.6	-1,339.3	1,374.4	0.00	0.00	0.00	
4,000.0	26.16	257.02	3,699.8	-312.6	-1,356.5	1,392.1	0.00	0.00	0.00	
4,040.0	26.16	257.02	3,735.7	-316.5	-1,373.7	1,409.7	0.00	0.00	0.00	
4,080.0	26.16	257.02	3,771.6	-320.5	-1,390.9	1,427.4	0.00	0.00	0.00	

Database:	Landmark	Local Co-ordinate Reference:	Well Booth 31-23
Company:	BAYSWATER EXPLORATION & PRODUCTION	TVD Reference:	WELL @ 4912.0ft (Original Well Elev)
Project:	SEC.23-T7N-R65W	MD Reference:	WELL @ 4912.0ft (Original Well Elev)
Site:	Booth 10 Pad Sec.23-T7N-R65W	North Reference:	True
Well:	Booth 31-23	Survey Calculation Method:	Minimum Curvature
Wellbore:	Wellbore #1		
Design:	Plan #1 (5-07-12)		

Planned Survey									
Measured Depth (ft)	Inclination (°)	Azimuth (°)	Vertical Depth (ft)	+N/-S (ft)	+E/-W (ft)	Vertical Section (ft)	Dogleg Rate (°/100ft)	Build Rate (°/100ft)	Turn Rate (°/100ft)
4,120.0	26.16	257.02	3,807.5	-324.5	-1,408.1	1,445.0	0.00	0.00	0.00
4,158.4	26.16	257.02	3,842.0	-328.3	-1,424.6	1,461.9	0.00	0.00	0.00
PARKMAN									
4,160.0	26.16	257.02	3,843.4	-328.4	-1,425.3	1,462.6	0.00	0.00	0.00
4,200.0	26.16	257.02	3,879.3	-332.4	-1,442.5	1,480.3	0.00	0.00	0.00
4,240.0	26.16	257.02	3,915.2	-336.3	-1,459.6	1,497.9	0.00	0.00	0.00
4,280.0	26.16	257.02	3,951.1	-340.3	-1,476.8	1,515.5	0.00	0.00	0.00
4,320.0	26.16	257.02	3,987.0	-344.3	-1,494.0	1,533.2	0.00	0.00	0.00
4,360.0	26.16	257.02	4,022.9	-348.2	-1,511.2	1,550.8	0.00	0.00	0.00
4,400.0	26.16	257.02	4,058.8	-352.2	-1,528.4	1,568.4	0.00	0.00	0.00
4,440.0	26.16	257.02	4,094.7	-356.1	-1,545.6	1,586.1	0.00	0.00	0.00
4,480.0	26.16	257.02	4,130.6	-360.1	-1,562.7	1,603.7	0.00	0.00	0.00
4,520.0	26.16	257.02	4,166.5	-364.1	-1,579.9	1,621.3	0.00	0.00	0.00
4,560.0	26.16	257.02	4,202.4	-368.0	-1,597.1	1,639.0	0.00	0.00	0.00
4,600.0	26.16	257.02	4,238.3	-372.0	-1,614.3	1,656.6	0.00	0.00	0.00
4,640.0	26.16	257.02	4,274.2	-375.9	-1,631.5	1,674.2	0.00	0.00	0.00
4,680.0	26.16	257.02	4,310.1	-379.9	-1,648.7	1,691.9	0.00	0.00	0.00
4,720.0	26.16	257.02	4,346.0	-383.9	-1,665.8	1,709.5	0.00	0.00	0.00
4,760.0	26.16	257.02	4,381.9	-387.8	-1,683.0	1,727.1	0.00	0.00	0.00
4,800.0	26.16	257.02	4,417.8	-391.8	-1,700.2	1,744.8	0.00	0.00	0.00
4,840.0	26.16	257.02	4,453.7	-395.7	-1,717.4	1,762.4	0.00	0.00	0.00
4,880.0	26.16	257.02	4,489.6	-399.7	-1,734.6	1,780.0	0.00	0.00	0.00
4,920.0	26.16	257.02	4,525.5	-403.7	-1,751.8	1,797.7	0.00	0.00	0.00
4,960.0	26.16	257.02	4,561.5	-407.6	-1,769.0	1,815.3	0.00	0.00	0.00
4,999.6	26.16	257.02	4,597.0	-411.5	-1,786.0	1,832.8	0.00	0.00	0.00
SUSSEX									
5,000.0	26.16	257.02	4,597.4	-411.6	-1,786.1	1,832.9	0.00	0.00	0.00
5,040.0	26.16	257.02	4,633.3	-415.5	-1,803.3	1,850.6	0.00	0.00	0.00
5,080.0	26.16	257.02	4,669.2	-419.5	-1,820.5	1,868.2	0.00	0.00	0.00
5,120.0	26.16	257.02	4,705.1	-423.5	-1,837.7	1,885.8	0.00	0.00	0.00
5,160.0	26.16	257.02	4,741.0	-427.4	-1,854.9	1,903.5	0.00	0.00	0.00
5,200.0	26.16	257.02	4,776.9	-431.4	-1,872.1	1,921.1	0.00	0.00	0.00
5,240.0	26.16	257.02	4,812.8	-435.3	-1,889.2	1,938.8	0.00	0.00	0.00
5,280.0	26.16	257.02	4,848.7	-439.3	-1,906.4	1,956.4	0.00	0.00	0.00
5,320.0	26.16	257.02	4,884.6	-443.3	-1,923.6	1,974.0	0.00	0.00	0.00
5,360.0	26.16	257.02	4,920.5	-447.2	-1,940.8	1,991.7	0.00	0.00	0.00
5,400.0	26.16	257.02	4,956.4	-451.2	-1,958.0	2,009.3	0.00	0.00	0.00
5,440.0	26.16	257.02	4,992.3	-455.1	-1,975.2	2,026.9	0.00	0.00	0.00
5,480.0	26.16	257.02	5,028.2	-459.1	-1,992.3	2,044.6	0.00	0.00	0.00
5,489.8	26.16	257.02	5,037.0	-460.1	-1,996.6	2,048.9	0.00	0.00	0.00
5,520.0	25.56	257.02	5,064.2	-463.0	-2,009.4	2,062.1	2.00	-2.00	0.00
5,560.0	24.76	257.02	5,100.4	-466.8	-2,026.0	2,079.1	2.00	-2.00	0.00
5,600.0	23.96	257.02	5,136.8	-470.6	-2,042.0	2,095.6	2.00	-2.00	0.00
5,611.1	23.73	257.02	5,147.0	-471.6	-2,046.4	2,100.1	2.00	-2.00	0.00
SHANNON									
5,640.0	23.16	257.02	5,173.5	-474.1	-2,057.6	2,111.5	2.00	-2.00	0.00
5,680.0	22.36	257.02	5,210.4	-477.6	-2,072.7	2,127.0	2.00	-2.00	0.00
5,720.0	21.56	257.02	5,247.5	-481.0	-2,087.3	2,142.0	2.00	-2.00	0.00
5,760.0	20.76	257.02	5,284.8	-484.2	-2,101.3	2,156.4	2.00	-2.00	0.00
5,800.0	19.96	257.02	5,322.3	-487.3	-2,114.9	2,170.3	2.00	-2.00	0.00
5,840.0	19.16	257.02	5,360.0	-490.3	-2,127.9	2,183.7	2.00	-2.00	0.00
5,880.0	18.36	257.02	5,397.8	-493.2	-2,140.5	2,196.6	2.00	-2.00	0.00
5,920.0	17.56	257.02	5,435.9	-496.0	-2,152.5	2,208.9	2.00	-2.00	0.00

Database:	Landmark	Local Co-ordinate Reference:	Well Booth 31-23
Company:	BAYSWATER EXPLORATION & PRODUCTION	TVD Reference:	WELL @ 4912.0ft (Original Well Elev)
Project:	SEC.23-T7N-R65W	MD Reference:	WELL @ 4912.0ft (Original Well Elev)
Site:	Booth 10 Pad Sec.23-T7N-R65W	North Reference:	True
Well:	Booth 31-23	Survey Calculation Method:	Minimum Curvature
Wellbore:	Wellbore #1		
Design:	Plan #1 (5-07-12)		

Planned Survey

Measured Depth (ft)	Inclination (°)	Azimuth (°)	Vertical Depth (ft)	+N/-S (ft)	+E/-W (ft)	Vertical Section (ft)	Dogleg Rate (°/100ft)	Build Rate (°/100ft)	Turn Rate (°/100ft)
5,960.0	16.76	257.02	5,474.1	-498.7	-2,164.0	2,220.7	2.00	-2.00	0.00
6,000.0	15.96	257.02	5,512.5	-501.2	-2,175.0	2,232.0	2.00	-2.00	0.00
6,040.0	15.16	257.02	5,551.0	-503.6	-2,185.4	2,242.7	2.00	-2.00	0.00
6,080.0	14.36	257.02	5,589.7	-505.9	-2,195.3	2,252.9	2.00	-2.00	0.00
6,120.0	13.56	257.02	5,628.5	-508.0	-2,204.7	2,262.5	2.00	-2.00	0.00
6,160.0	12.76	257.02	5,667.5	-510.1	-2,213.6	2,271.6	2.00	-2.00	0.00
6,200.0	11.96	257.02	5,706.5	-512.0	-2,222.0	2,280.2	2.00	-2.00	0.00
6,240.0	11.16	257.02	5,745.7	-513.8	-2,229.8	2,288.2	2.00	-2.00	0.00
6,280.0	10.36	257.02	5,785.0	-515.5	-2,237.0	2,295.7	2.00	-2.00	0.00
6,320.0	9.56	257.02	5,824.4	-517.0	-2,243.8	2,302.6	2.00	-2.00	0.00
6,360.0	8.76	257.02	5,863.9	-518.5	-2,250.0	2,308.9	2.00	-2.00	0.00
6,400.0	7.96	257.02	5,903.5	-519.8	-2,255.6	2,314.8	2.00	-2.00	0.00
6,440.0	7.16	257.02	5,943.1	-521.0	-2,260.8	2,320.0	2.00	-2.00	0.00
6,480.0	6.36	257.02	5,982.9	-522.0	-2,265.3	2,324.7	2.00	-2.00	0.00
6,520.0	5.56	257.02	6,022.7	-522.9	-2,269.4	2,328.9	2.00	-2.00	0.00
6,560.0	4.76	257.02	6,062.5	-523.7	-2,272.9	2,332.5	2.00	-2.00	0.00
6,600.0	3.96	257.02	6,102.4	-524.4	-2,275.9	2,335.5	2.00	-2.00	0.00
6,640.0	3.16	257.02	6,142.3	-525.0	-2,278.3	2,338.0	2.00	-2.00	0.00
6,680.0	2.36	257.02	6,182.2	-525.4	-2,280.1	2,339.9	2.00	-2.00	0.00
6,720.0	1.56	257.02	6,222.2	-525.7	-2,281.5	2,341.3	2.00	-2.00	0.00
6,760.0	0.76	257.02	6,262.2	-525.9	-2,282.3	2,342.1	2.00	-2.00	0.00
6,797.8	0.00	0.00	6,300.0	-526.0	-2,282.5	2,342.3	2.00	-2.00	0.00
TARGET BHL 1033'FNL, 75'FWL									
6,800.0	0.00	0.00	6,302.2	-526.0	-2,282.5	2,342.3	0.00	0.00	0.00
6,840.0	0.00	0.00	6,342.2	-526.0	-2,282.5	2,342.3	0.00	0.00	0.00
6,880.0	0.00	0.00	6,382.2	-526.0	-2,282.5	2,342.3	0.00	0.00	0.00
6,920.0	0.00	0.00	6,422.2	-526.0	-2,282.5	2,342.3	0.00	0.00	0.00
6,960.0	0.00	0.00	6,462.2	-526.0	-2,282.5	2,342.3	0.00	0.00	0.00
7,000.0	0.00	0.00	6,502.2	-526.0	-2,282.5	2,342.3	0.00	0.00	0.00
7,040.0	0.00	0.00	6,542.2	-526.0	-2,282.5	2,342.3	0.00	0.00	0.00
7,080.0	0.00	0.00	6,582.2	-526.0	-2,282.5	2,342.3	0.00	0.00	0.00
7,120.0	0.00	0.00	6,622.2	-526.0	-2,282.5	2,342.3	0.00	0.00	0.00
7,160.0	0.00	0.00	6,662.2	-526.0	-2,282.5	2,342.3	0.00	0.00	0.00
7,200.0	0.00	0.00	6,702.2	-526.0	-2,282.5	2,342.3	0.00	0.00	0.00
7,240.0	0.00	0.00	6,742.2	-526.0	-2,282.5	2,342.3	0.00	0.00	0.00
7,280.0	0.00	0.00	6,782.2	-526.0	-2,282.5	2,342.3	0.00	0.00	0.00
7,320.0	0.00	0.00	6,822.2	-526.0	-2,282.5	2,342.3	0.00	0.00	0.00
7,360.0	0.00	0.00	6,862.2	-526.0	-2,282.5	2,342.3	0.00	0.00	0.00
7,400.0	0.00	0.00	6,902.2	-526.0	-2,282.5	2,342.3	0.00	0.00	0.00
7,440.0	0.00	0.00	6,942.2	-526.0	-2,282.5	2,342.3	0.00	0.00	0.00
7,444.8	0.00	0.00	6,947.0	-526.0	-2,282.5	2,342.3	0.00	0.00	0.00
NIOBRARA - TARGET CIRCLE 1033'FNL & 75'FWL									
7,480.0	0.00	0.00	6,982.2	-526.0	-2,282.5	2,342.3	0.00	0.00	0.00
7,520.0	0.00	0.00	7,022.2	-526.0	-2,282.5	2,342.3	0.00	0.00	0.00
7,560.0	0.00	0.00	7,062.2	-526.0	-2,282.5	2,342.3	0.00	0.00	0.00
7,600.0	0.00	0.00	7,102.2	-526.0	-2,282.5	2,342.3	0.00	0.00	0.00
7,640.0	0.00	0.00	7,142.2	-526.0	-2,282.5	2,342.3	0.00	0.00	0.00
7,680.0	0.00	0.00	7,182.2	-526.0	-2,282.5	2,342.3	0.00	0.00	0.00
7,696.8	0.00	0.00	7,199.0	-526.0	-2,282.5	2,342.3	0.00	0.00	0.00
FT. HAYS									
7,720.0	0.00	0.00	7,222.2	-526.0	-2,282.5	2,342.3	0.00	0.00	0.00
7,740.8	0.00	0.00	7,243.0	-526.0	-2,282.5	2,342.3	0.00	0.00	0.00
CODELL									

Database:	Landmark	Local Co-ordinate Reference:	Well Booth 31-23
Company:	BAYSWATER EXPLORATION & PRODUCTION	TVD Reference:	WELL @ 4912.0ft (Original Well Elev)
Project:	SEC.23-T7N-R65W	MD Reference:	WELL @ 4912.0ft (Original Well Elev)
Site:	Booth 10 Pad Sec.23-T7N-R65W	North Reference:	True
Well:	Booth 31-23	Survey Calculation Method:	Minimum Curvature
Wellbore:	Wellbore #1		
Design:	Plan #1 (5-07-12)		

Planned Survey

[illegible]

Targets

Target Name	Dip Angle	Dip Dir.	TVD	+N/-S	+E/-W	Northing	Easting	Latitude	Longitude
- hit/miss target	(°)	(°)	(ft)	(ft)	(ft)	(ft)	(ft)		
- Shape									
TARGET CIRCLE 1033'F	0.00	0.00	6,947.0	-526.0	-2,282.5	1,449,343.57	3,239,086.39	40.563663	-104.639462
- plan hits target center									
- Circle (radius 75.0)									
HARDLINES 75'W OF	0.00	0.00	7,390.0	-626.0	-2,357.5	1,449,242.81	3,239,012.38	40.563388	-104.639732
- plan misses target center by 125.0ft at 7887.8ft MD (7390.0 TVD, -526.0 N, -2282.5 E)									
- Polygon									
Point 1			7,390.0	0.0	0.0	1,449,242.81	3,239,012.38		
Point 2			7,390.0	200.0	0.0	1,449,442.79	3,239,010.42		
TARGET BHL 1033'F	0.00	0.00	6,300.0	-526.0	-2,282.5	1,449,343.57	3,239,086.39	40.563663	-104.639462
- plan hits target center									
- Point									

Casing Points

Measured Depth (ft)	Vertical Depth (ft)	Name	Casing Diameter (")	Hole Diameter (")
646.8	645.0	8 5/8"	8-5/8	12-1/4

Formations

Measured Depth (ft)	Vertical Depth (ft)	Name	Lithology	Dip (°)	Dip Direction (°)
4,158.4	3,842.0	PARKMAN		0.00	
4,999.6	4,597.0	SUSSEX		0.00	
5,611.1	5,147.0	SHANNON		0.00	
7,444.8	6,947.0	NIOBRARA		0.00	
7,696.8	7,199.0	FT. HAYS		0.00	
7,740.8	7,243.0	CODELL		0.00	
7,792.8	7,295.0	GREENHORN		0.00	
7,874.8	7,377.0	GRANEROS		0.00	

Database:	Landmark	Local Co-ordinate Reference:	Well Booth 31-23
Company:	BAYSWATER EXPLORATION & PRODUCTION	TVD Reference:	WELL @ 4912.0ft (Original Well Elev)
Project:	SEC.23-T7N-R65W	MD Reference:	WELL @ 4912.0ft (Original Well Elev)
Site:	Booth 10 Pad Sec.23-T7N-R65W	North Reference:	True
Well:	Booth 31-23	Survey Calculation Method:	Minimum Curvature
Wellbore:	Wellbore #1		
Design:	Plan #1 (5-07-12)		



BAYSWATER EXPLORATION & PRODUCTION

SEC.23-T7N-R65W

Booth 10 Pad Sec.23-T7N-R65W

Booth 31-23

Wellbore #1

Plan #1 (5-07-12)

Anticollision Report

11 May, 2012

Company:	BAYSWATER EXPLORATION & PRODUCTION	Local Co-ordinate Reference:	Well Booth 31-23
Project:	SEC.23-T7N-R65W	TVD Reference:	WELL @ 4912.0ft (Original Well Elev)
Reference Site:	Booth 10 Pad Sec.23-T7N-R65W	MD Reference:	WELL @ 4912.0ft (Original Well Elev)
Site Error:	0.0ft	North Reference:	True
Reference Well:	Booth 31-23	Survey Calculation Method:	Minimum Curvature
Well Error:	0.0ft	Output errors are at	2.00 sigma
Reference Wellbore	Wellbore #1	Database:	Landmark
Reference Design:	Plan #1 (5-07-12)	Offset TVD Reference:	Offset Datum

Reference	Plan #1 (5-07-12)		
Filter type:	NO GLOBAL FILTER: Using user defined selection & filtering criteria		
Interpolation Method:	MD Interval 100.0ft	Error Model:	ISCWSA
Depth Range:	Unlimited	Scan Method:	Closest Approach 3D
Results Limited by:	Maximum center-center distance of 10,000.0ft	Error Surface:	Elliptical Conic
Warning Levels Evaluated at:	2.00 Sigma		

Survey Tool Program	Date 5/7/2012			
From (ft)	To (ft)	Survey (Wellbore)	Tool Name	Description
0.0	7,887.8	Plan #1 (5-07-12) (Wellbore #1)	MWD	MWD - Standard

Summary						
Site Name	Reference Measured Depth (ft)	Offset Measured Depth (ft)	Distance Between Centres (ft)	Distance Between Ellipses (ft)	Separation Factor	Warning
Offset Well - Wellbore - Design						
Booth 10 Pad Sec.23-T7N-R65W						
Booth 3-23 - Wellbore #1 - Plan #1 (5-07-12)	200.0	200.0	15.9	15.3	23.641	CC
Booth 3-23 - Wellbore #1 - Plan #1 (5-07-12)	300.0	300.0	16.3	15.1	14.632	ES
Booth 3-23 - Wellbore #1 - Plan #1 (5-07-12)	400.0	399.8	18.2	16.7	11.691	SF
Booth 4-23 - Wellbore #1 - Plan #1 (5-07-12)	315.6	315.6	15.9	14.7	13.442	CC, ES
Booth 4-23 - Wellbore #1 - Plan #1 (5-07-12)	500.0	499.8	20.0	18.0	9.928	SF

Offset Design	Booth 10 Pad Sec.23-T7N-R65W - Booth 3-23 - Wellbore #1 - Plan #1 (5-07-12)												Offset Site Error:	0.0 ft
Survey Program:	0-MWD												Offset Well Error:	0.0 ft
Reference	Offset	Semi Major Axis		Distance		Minimum Separation		Separation Factor	Warning					
Measured Depth (ft)	Vertical Depth (ft)	Measured Depth (ft)	Vertical Depth (ft)	Reference (ft)	Offset (ft)	Highside Toolface (°)	Offset Wellbore Centre +N/-S (ft)	+E/-W (ft)	Between Centres (ft)	Between Ellipses (ft)	Minimum Separation (ft)	Separation Factor		
0.0	0.0	0.0	0.0	0.0	0.0	159.60	-14.9	5.6	15.9	15.9	0.00	N/A		
100.0	100.0	100.0	100.0	0.1	0.1	159.60	-14.9	5.6	15.9	15.7	0.22	70.923		
200.0	200.0	200.0	200.0	0.3	0.3	159.60	-14.9	5.6	15.9	15.3	0.67	23.641	CC	
300.0	300.0	300.0	300.0	0.6	0.6	-103.53	-14.9	5.6	16.3	15.1	1.11	14.632	ES	
400.0	399.8	399.8	399.8	0.8	0.8	-119.70	-14.9	5.6	18.2	16.7	1.56	11.691	SF	
500.0	499.5	499.5	499.5	1.0	1.0	-138.16	-14.9	5.6	23.8	21.7	2.02	11.746		
600.0	598.7	598.7	598.7	1.3	1.2	-151.94	-14.9	5.6	33.9	31.4	2.49	13.589		
700.0	697.5	697.5	697.5	1.6	1.5	-160.60	-14.9	5.6	48.2	45.3	2.96	16.322		
800.0	795.6	795.6	795.6	2.0	1.7	-165.97	-14.9	5.6	66.6	63.1	3.42	19.468		
900.0	893.1	893.1	893.1	2.5	1.9	-169.41	-14.9	5.6	88.6	84.7	3.88	22.806		
1,000.0	989.6	989.6	989.6	3.0	2.1	-171.72	-14.9	5.6	114.1	109.8	4.35	26.233		
1,100.0	1,085.3	1,085.3	1,085.3	3.6	2.3	-173.34	-14.9	5.6	143.1	138.3	4.82	29.697		
1,200.0	1,179.8	1,179.8	1,179.8	4.3	2.5	-174.50	-14.9	5.6	175.5	170.2	5.29	33.169		
1,300.0	1,273.2	1,273.2	1,273.2	5.0	2.7	-175.37	-14.9	5.6	211.3	205.5	5.77	36.632		
1,400.0	1,365.2	1,365.2	1,365.2	5.8	3.0	-176.04	-14.9	5.6	250.2	244.0	6.24	40.076		
1,500.0	1,455.8	1,455.8	1,455.8	6.7	3.2	-176.55	-14.9	5.6	292.4	285.7	6.72	43.496		
1,600.0	1,545.6	1,551.7	1,551.7	7.6	3.4	-177.02	-15.1	5.1	336.0	328.8	7.25	46.361		
1,700.0	1,635.4	1,655.9	1,655.8	8.5	3.6	-177.38	-16.0	1.4	376.8	369.0	7.77	48.478		
1,800.0	1,725.1	1,763.5	1,763.1	9.5	3.8	-177.63	-17.8	-6.2	414.2	405.9	8.31	49.869		
1,900.0	1,814.9	1,874.2	1,873.2	10.4	4.0	-177.82	-20.8	-18.1	448.0	439.2	8.86	50.572		
2,000.0	1,904.6	1,987.9	1,985.6	11.4	4.3	-177.95	-24.8	-34.7	478.2	468.7	9.43	50.689		

CC - Min centre to center distance or convergent point, SF - min separation factor, ES - min ellipse separation

Company:	BAYSWATER EXPLORATION & PRODUCTION	Local Co-ordinate Reference:	Well Booth 31-23
Project:	SEC.23-T7N-R65W	TVD Reference:	WELL @ 4912.0ft (Original Well Elev)
Reference Site:	Booth 10 Pad Sec.23-T7N-R65W	MD Reference:	WELL @ 4912.0ft (Original Well Elev)
Site Error:	0.0ft	North Reference:	True
Reference Well:	Booth 31-23	Survey Calculation Method:	Minimum Curvature
Well Error:	0.0ft	Output errors are at	2.00 sigma
Reference Wellbore	Wellbore #1	Database:	Landmark
Reference Design:	Plan #1 (5-07-12)	Offset TVD Reference:	Offset Datum

Offset Design Booth 10 Pad Sec.23-T7N-R65W - Booth 3-23 - Wellbore #1 - Plan #1 (5-07-12)													Offset Site Error:	0.0 ft
Survey Program: 0-MWD													Offset Well Error:	0.0 ft
Measured Depth (ft)	Vertical Depth (ft)	Measured Depth (ft)	Vertical Depth (ft)	Reference	Offset	Semi Major Axis	Highside Toolface (°)	Offset Wellbore Centre +N/-S (ft)	Offset Wellbore Centre +E/-W (ft)	Between Centres (ft)	Between Ellipses (ft)	Minimum Separation (ft)	Separation Factor	Warning
2,100.0	1,994.4	2,091.8	2,087.7	12.3	4.6	-178.04		-29.3	-53.0	505.2	495.2	10.00	50.496	
2,200.0	2,084.1	2,188.2	2,182.4	13.3	4.9	-178.11		-33.6	-70.3	531.9	521.3	10.58	50.277	
2,300.0	2,173.9	2,284.5	2,277.1	14.2	5.2	-178.17		-37.8	-87.6	558.6	547.5	11.16	50.058	
2,400.0	2,263.7	2,380.9	2,371.8	15.2	5.5	-178.23		-42.1	-104.9	585.3	573.6	11.74	49.847	
2,500.0	2,353.4	2,477.2	2,466.5	16.1	5.9	-178.28		-46.3	-122.3	612.1	599.7	12.33	49.629	
2,600.0	2,443.2	2,573.6	2,561.2	17.1	6.2	-178.33		-50.5	-139.6	638.8	625.9	12.93	49.420	
2,700.0	2,532.9	2,670.0	2,655.9	18.1	6.6	-178.38		-54.8	-156.9	665.5	652.0	13.52	49.218	
2,800.0	2,622.7	2,766.3	2,750.6	19.0	6.9	-178.42		-59.0	-174.2	692.2	678.1	14.12	49.024	
2,900.0	2,712.4	2,862.7	2,845.3	20.0	7.3	-178.46		-63.3	-191.5	719.0	704.2	14.72	48.837	
3,000.0	2,802.2	2,959.1	2,940.0	20.9	7.6	-178.49		-67.5	-208.8	745.7	730.4	15.32	48.658	
3,100.0	2,892.0	3,055.4	3,034.7	21.9	8.0	-178.52		-71.8	-226.1	772.4	756.5	15.93	48.487	
3,200.0	2,981.7	3,151.8	3,129.4	22.9	8.4	-178.55		-76.0	-243.4	799.1	782.6	16.54	48.323	
3,300.0	3,071.5	3,248.1	3,224.1	23.8	8.8	-178.58		-80.3	-260.7	825.9	808.7	17.15	48.166	
3,400.0	3,161.2	3,344.5	3,318.8	24.8	9.1	-178.61		-84.5	-278.0	852.6	834.8	17.76	48.016	
3,500.0	3,251.0	3,440.9	3,413.5	25.7	9.5	-178.63		-88.8	-295.3	879.3	860.9	18.37	47.873	
3,600.0	3,340.8	3,527.9	3,499.1	26.7	9.8	-178.66		-92.6	-310.8	906.2	887.3	18.95	47.822	
3,700.0	3,430.5	3,600.0	3,570.2	27.7	10.1	-178.68		-95.4	-322.2	935.2	915.7	19.49	47.992	
3,800.0	3,520.3	3,671.7	3,641.2	28.6	10.3	-178.70		-97.7	-331.8	966.5	946.5	20.02	48.279	
3,900.0	3,610.0	3,741.8	3,710.9	29.6	10.4	-178.73		-99.6	-339.5	1,000.1	979.6	20.54	48.680	
4,000.0	3,699.8	3,800.0	3,768.8	30.6	10.6	-178.75		-100.9	-344.6	1,036.1	1,015.1	21.05	49.234	
4,100.0	3,789.5	3,878.3	3,846.9	31.5	10.7	-178.78		-102.1	-349.7	1,074.2	1,052.6	21.58	49.778	
4,200.0	3,879.3	3,944.5	3,913.1	32.5	10.8	-178.81		-102.8	-352.4	1,114.5	1,092.4	22.09	50.457	
4,300.0	3,969.1	4,009.4	3,978.0	33.5	11.0	-178.84		-103.1	-353.6	1,156.8	1,134.3	22.59	51.207	
4,400.0	4,058.8	4,090.2	4,058.8	34.4	11.1	-178.88		-103.1	-353.7	1,200.8	1,177.7	23.12	51.932	
4,500.0	4,148.6	4,180.0	4,148.6	35.4	11.2	-178.92		-103.1	-353.7	1,244.9	1,221.2	23.67	52.589	
4,600.0	4,238.3	4,269.7	4,238.3	36.3	11.4	-178.96		-103.1	-353.7	1,289.0	1,264.7	24.22	53.213	
4,700.0	4,328.1	4,359.5	4,328.1	37.3	11.5	-178.99		-103.1	-353.7	1,333.0	1,308.3	24.77	53.807	
4,800.0	4,417.8	4,449.3	4,417.8	38.3	11.7	-179.02		-103.1	-353.7	1,377.1	1,351.8	25.33	54.373	
4,900.0	4,507.6	4,539.0	4,507.6	39.2	11.9	-179.06		-103.1	-353.7	1,421.2	1,395.3	25.88	54.913	
5,000.0	4,597.4	4,628.8	4,597.4	40.2	12.0	-179.08		-103.1	-353.7	1,465.3	1,438.9	26.44	55.428	
5,100.0	4,687.1	4,718.5	4,687.1	41.2	12.2	-179.11		-103.1	-353.7	1,509.4	1,482.4	26.99	55.921	
5,200.0	4,776.9	4,808.3	4,776.9	42.1	12.3	-179.14		-103.1	-353.7	1,553.5	1,525.9	27.55	56.392	
5,300.0	4,866.6	4,898.0	4,866.6	43.1	12.5	-179.16		-103.1	-353.7	1,597.5	1,569.4	28.10	56.843	
5,400.0	4,956.4	4,987.8	4,956.4	44.1	12.7	-179.18		-103.1	-353.7	1,641.6	1,613.0	28.66	57.274	
5,500.0	5,046.2	5,077.6	5,046.2	45.0	12.8	-179.20		-103.1	-353.7	1,685.7	1,656.5	29.23	57.664	
5,600.0	5,136.8	5,168.2	5,136.8	45.8	13.0	-179.24		-103.1	-353.7	1,727.9	1,698.0	29.87	57.843	
5,700.0	5,228.9	5,260.3	5,228.9	46.4	13.2	-179.26		-103.1	-353.7	1,766.9	1,736.4	30.47	57.988	
5,800.0	5,322.3	5,353.7	5,322.3	47.1	13.3	-179.29		-103.1	-353.7	1,802.6	1,771.6	31.02	58.104	
5,900.0	5,416.8	5,448.3	5,416.8	47.6	13.5	-179.31		-103.1	-353.7	1,835.1	1,803.6	31.53	58.193	
6,000.0	5,512.5	5,543.9	5,512.5	48.1	13.7	-179.33		-103.1	-353.7	1,864.3	1,832.3	32.00	58.260	
6,100.0	5,609.1	5,640.5	5,609.1	48.6	13.9	-179.34		-103.1	-353.7	1,890.1	1,857.7	32.42	58.305	
6,200.0	5,706.5	5,738.0	5,706.5	48.9	14.1	-179.36		-103.1	-353.7	1,912.5	1,879.7	32.79	58.332	
6,300.0	5,804.7	5,836.1	5,804.7	49.3	14.3	-179.37		-103.1	-353.7	1,931.5	1,898.4	33.11	58.342	
6,400.0	5,903.5	5,934.9	5,903.5	49.5	14.5	-179.37		-103.1	-353.7	1,947.1	1,913.7	33.38	58.337	
6,500.0	6,002.8	6,034.2	6,002.8	49.8	14.6	-179.38		-103.1	-353.7	1,959.2	1,925.6	33.60	58.316	
6,600.0	6,102.4	6,133.8	6,102.4	49.9	14.8	-179.39		-103.1	-353.7	1,967.8	1,934.0	33.76	58.282	
6,700.0	6,202.2	6,233.7	6,202.2	50.0	15.0	-179.39		-103.1	-353.7	1,973.0	1,939.1	33.88	58.234	
6,800.0	6,302.2	6,333.6	6,302.2	50.1	15.2	77.63		-103.1	-353.7	1,974.6	1,940.7	33.96	58.150	
6,900.0	6,402.2	6,433.6	6,402.2	50.2	15.4	77.63		-103.1	-353.7	1,974.6	1,940.3	34.30	57.573	
7,000.0	6,502.2	6,533.6	6,502.2	50.2	15.6	77.63		-103.1	-353.7	1,974.6	1,940.0	34.64	57.003	
7,100.0	6,602.2	6,633.6	6,602.2	50.3	15.8	77.63		-103.1	-353.7	1,974.6	1,939.6	34.99	56.441	

CC - Min centre to center distance or convergent point, SF - min separation factor, ES - min ellipse separation

Company:	BAYSWATER EXPLORATION & PRODUCTION	Local Co-ordinate Reference:	Well Booth 31-23
Project:	SEC.23-T7N-R65W	TVD Reference:	WELL @ 4912.0ft (Original Well Elev)
Reference Site:	Booth 10 Pad Sec.23-T7N-R65W	MD Reference:	WELL @ 4912.0ft (Original Well Elev)
Site Error:	0.0ft	North Reference:	True
Reference Well:	Booth 31-23	Survey Calculation Method:	Minimum Curvature
Well Error:	0.0ft	Output errors are at	2.00 sigma
Reference Wellbore	Wellbore #1	Database:	Landmark
Reference Design:	Plan #1 (5-07-12)	Offset TVD Reference:	Offset Datum

Offset Design Booth 10 Pad Sec.23-T7N-R65W - Booth 3-23 - Wellbore #1 - Plan #1 (5-07-12)												Offset Site Error:	0.0 ft
Survey Program: 0-MWD												Offset Well Error:	0.0 ft
Reference	Offset	Semi Major Axis		Distance									
Measured Depth (ft)	Vertical Depth (ft)	Measured Depth (ft)	Vertical Depth (ft)	Reference (ft)	Offset (ft)	Highside Toolface (°)	Offset Wellbore Centre +N/-S (ft)	+E/-W (ft)	Between Centres (ft)	Between Ellipses (ft)	Minimum Separation (ft)	Separation Factor	Warning
7,200.0	6,702.2	6,733.6	6,702.2	50.3	16.0	77.63	-103.1	-353.7	1,974.6	1,939.3	35.33	55.888	
7,300.0	6,802.2	6,833.6	6,802.2	50.4	16.2	77.63	-103.1	-353.7	1,974.6	1,938.9	35.68	55.342	
7,400.0	6,902.2	6,933.6	6,902.2	50.5	16.4	77.63	-103.1	-353.7	1,974.6	1,938.6	36.03	54.804	
7,500.0	7,002.2	7,033.6	7,002.2	50.5	16.6	77.63	-103.1	-353.7	1,974.6	1,938.2	36.38	54.274	
7,600.0	7,102.2	7,133.6	7,102.2	50.6	16.8	77.63	-103.1	-353.7	1,974.6	1,937.9	36.74	53.752	
7,700.0	7,202.2	7,233.6	7,202.2	50.7	17.0	77.63	-103.1	-353.7	1,974.6	1,937.5	37.09	53.237	
7,800.0	7,302.2	7,333.6	7,302.2	50.7	17.2	77.63	-103.1	-353.7	1,974.6	1,937.2	37.45	52.729	
7,856.8	7,359.0	7,390.4	7,359.0	50.8	17.4	77.63	-103.1	-353.7	1,974.6	1,937.0	37.65	52.444	
7,887.8	7,390.0	7,416.4	7,385.0	50.8	17.4	77.63	-103.1	-353.7	1,974.6	1,936.9	37.75	52.305	

Company:	BAYSWATER EXPLORATION & PRODUCTION	Local Co-ordinate Reference:	Well Booth 31-23
Project:	SEC.23-T7N-R65W	TVD Reference:	WELL @ 4912.0ft (Original Well Elev)
Reference Site:	Booth 10 Pad Sec.23-T7N-R65W	MD Reference:	WELL @ 4912.0ft (Original Well Elev)
Site Error:	0.0ft	North Reference:	True
Reference Well:	Booth 31-23	Survey Calculation Method:	Minimum Curvature
Well Error:	0.0ft	Output errors are at	2.00 sigma
Reference Wellbore	Wellbore #1	Database:	Landmark
Reference Design:	Plan #1 (5-07-12)	Offset TVD Reference:	Offset Datum

Offset Design Booth 10 Pad Sec.23-T7N-R65W - Booth 4-23 - Wellbore #1 - Plan #1 (5-07-12)													Offset Site Error:	0.0 ft
Survey Program: 0-MWD													Offset Well Error:	0.0 ft
Measured Depth (ft)	Vertical Depth (ft)	Measured Depth (ft)	Vertical Depth (ft)	Reference (ft)	Offset (ft)	Semi Major Axis Highside Toolface (°)	Offset Wellbore Centre +N/-S (ft)	+E/-W (ft)	Between Centres (ft)	Between Ellipses (ft)	Minimum Separation (ft)	Separation Factor	Warning	
0.0	0.0	0.0	0.0	0.0	0.0	-21.34	14.9	-5.8	16.0	16.0	0.00	N/A		
100.0	100.0	100.0	100.0	0.1	0.1	-21.34	14.9	-5.8	16.0	15.8	0.22	71.347		
200.0	200.0	200.0	200.0	0.3	0.3	-21.34	14.9	-5.8	16.0	15.4	0.67	23.782		
300.0	300.0	300.0	300.0	0.6	0.6	87.88	14.9	-5.8	15.9	14.8	1.11	14.291		
315.6	315.6	315.6	315.6	0.6	0.6	90.00	14.9	-5.8	15.9	14.7	1.18	13.442 CC, ES		
400.0	399.8	399.8	399.8	0.8	0.8	106.29	14.9	-5.8	16.5	15.0	1.56	10.624		
500.0	499.5	499.8	499.7	1.0	1.0	125.66	14.9	-7.6	20.0	18.0	2.01	9.928 SF		
600.0	598.7	599.9	599.8	1.3	1.2	137.32	14.7	-12.8	25.4	23.0	2.47	10.307		
700.0	697.5	700.3	699.7	1.6	1.5	143.73	14.4	-21.6	32.0	29.1	2.95	10.866		
800.0	795.6	800.9	799.6	2.0	1.7	147.10	14.0	-33.8	39.3	35.8	3.46	11.357		
900.0	893.1	901.7	899.1	2.5	2.0	148.72	13.5	-49.6	47.0	43.0	4.02	11.710		
1,000.0	989.6	1,002.7	998.3	3.0	2.4	149.27	12.9	-69.0	55.2	50.5	4.63	11.910		
1,100.0	1,085.3	1,103.9	1,096.8	3.6	2.8	149.14	12.2	-91.8	63.6	58.3	5.32	11.964		
1,200.0	1,179.8	1,205.3	1,194.7	4.3	3.4	148.58	11.4	-118.2	72.5	66.4	6.10	11.886		
1,300.0	1,273.2	1,306.9	1,291.8	5.0	3.9	147.73	10.4	-148.1	81.7	74.7	6.98	11.696		
1,400.0	1,365.2	1,408.7	1,388.0	5.8	4.6	146.68	9.4	-181.5	91.2	83.2	7.99	11.422		
1,500.0	1,455.8	1,508.3	1,481.3	6.7	5.3	146.09	8.3	-216.1	102.2	93.1	9.05	11.288		
1,600.0	1,545.6	1,607.5	1,574.3	7.6	6.0	146.27	7.2	-250.6	114.8	104.7	10.13	11.336		
1,700.0	1,635.4	1,706.7	1,667.3	8.5	6.7	146.42	6.1	-285.1	127.5	116.2	11.22	11.357		
1,800.0	1,725.1	1,805.9	1,760.3	9.5	7.4	146.55	5.0	-319.6	140.1	127.8	12.33	11.366		
1,900.0	1,814.9	1,905.1	1,853.3	10.4	8.1	146.65	3.9	-354.1	152.7	139.3	13.44	11.366		
2,000.0	1,904.6	2,004.3	1,946.3	11.4	8.8	146.74	2.8	-388.6	165.4	150.8	14.55	11.361		
2,100.0	1,994.4	2,103.5	2,039.4	12.3	9.6	146.82	1.7	-423.1	178.0	162.3	15.68	11.354		
2,200.0	2,084.1	2,202.7	2,132.4	13.3	10.3	146.88	0.6	-457.6	190.6	173.8	16.80	11.345		
2,300.0	2,173.9	2,301.9	2,225.4	14.2	11.0	146.94	-0.5	-492.0	203.3	185.3	17.93	11.335		
2,400.0	2,263.7	2,401.1	2,318.4	15.2	11.8	146.99	-1.6	-526.5	215.9	196.8	19.06	11.325		
2,500.0	2,353.4	2,500.2	2,411.4	16.1	12.5	147.04	-2.7	-561.0	228.5	208.3	20.20	11.315		
2,600.0	2,443.2	2,599.4	2,504.4	17.1	13.2	147.08	-3.8	-595.5	241.2	219.9	21.33	11.305		
2,700.0	2,532.9	2,698.6	2,597.4	18.1	14.0	147.12	-4.9	-630.0	253.8	231.4	22.47	11.295		
2,800.0	2,622.7	2,797.8	2,690.4	19.0	14.7	147.15	-6.0	-664.5	266.5	242.9	23.61	11.286		
2,900.0	2,712.4	2,897.0	2,783.4	20.0	15.4	147.18	-7.1	-699.0	279.1	254.3	24.75	11.277		
3,000.0	2,802.2	2,996.2	2,876.4	20.9	16.2	147.21	-8.2	-733.5	291.7	265.8	25.89	11.268		
3,100.0	2,892.0	3,095.4	2,969.4	21.9	16.9	147.23	-9.3	-768.0	304.4	277.3	27.03	11.260		
3,200.0	2,981.7	3,194.6	3,062.4	22.9	17.7	147.26	-10.4	-802.5	317.0	288.8	28.17	11.252		
3,300.0	3,071.5	3,293.8	3,155.4	23.8	18.4	147.28	-11.5	-837.0	329.7	300.3	29.32	11.245		
3,400.0	3,161.2	3,393.0	3,248.4	24.8	19.1	147.30	-12.6	-871.5	342.3	311.8	30.46	11.238		
3,500.0	3,251.0	3,492.2	3,341.4	25.7	19.9	147.32	-13.7	-906.0	354.9	323.3	31.60	11.231		
3,600.0	3,340.8	3,591.4	3,434.4	26.7	20.6	147.33	-14.8	-940.5	367.6	334.8	32.75	11.224		
3,700.0	3,430.5	3,690.6	3,527.4	27.7	21.4	147.35	-15.8	-974.9	380.2	346.3	33.89	11.218		
3,800.0	3,520.3	3,789.8	3,620.4	28.6	22.1	147.36	-16.9	-1,009.4	392.8	357.8	35.04	11.212		
3,900.0	3,610.0	3,889.0	3,713.4	29.6	22.9	147.38	-18.0	-1,043.9	405.5	369.3	36.18	11.207		
4,000.0	3,699.8	3,988.2	3,806.4	30.6	23.6	147.39	-19.1	-1,078.4	418.1	380.8	37.33	11.201		
4,100.0	3,789.5	4,087.4	3,899.4	31.5	24.3	147.40	-20.2	-1,112.9	430.8	392.3	38.47	11.196		
4,200.0	3,879.3	4,186.6	3,992.4	32.5	25.1	147.42	-21.3	-1,147.4	443.4	403.8	39.62	11.191		
4,300.0	3,969.1	4,285.8	4,085.4	33.5	25.8	147.43	-22.4	-1,181.9	456.0	415.3	40.77	11.186		
4,400.0	4,058.8	4,385.0	4,178.4	34.4	26.6	147.44	-23.5	-1,216.4	468.7	426.8	41.91	11.182		
4,500.0	4,148.6	4,484.2	4,271.4	35.4	27.3	147.45	-24.6	-1,250.9	481.3	438.3	43.06	11.178		
4,600.0	4,238.3	4,583.4	4,364.4	36.3	28.1	147.46	-25.7	-1,285.4	494.0	449.7	44.21	11.173		
4,700.0	4,328.1	4,682.6	4,457.4	37.3	28.8	147.47	-26.8	-1,319.9	506.6	461.2	45.35	11.170		
4,800.0	4,417.8	4,781.8	4,550.4	38.3	29.5	147.48	-27.9	-1,354.4	519.2	472.7	46.50	11.166		
4,900.0	4,507.6	4,881.0	4,643.4	39.2	30.3	147.48	-29.0	-1,388.9	531.9	484.2	47.65	11.162		

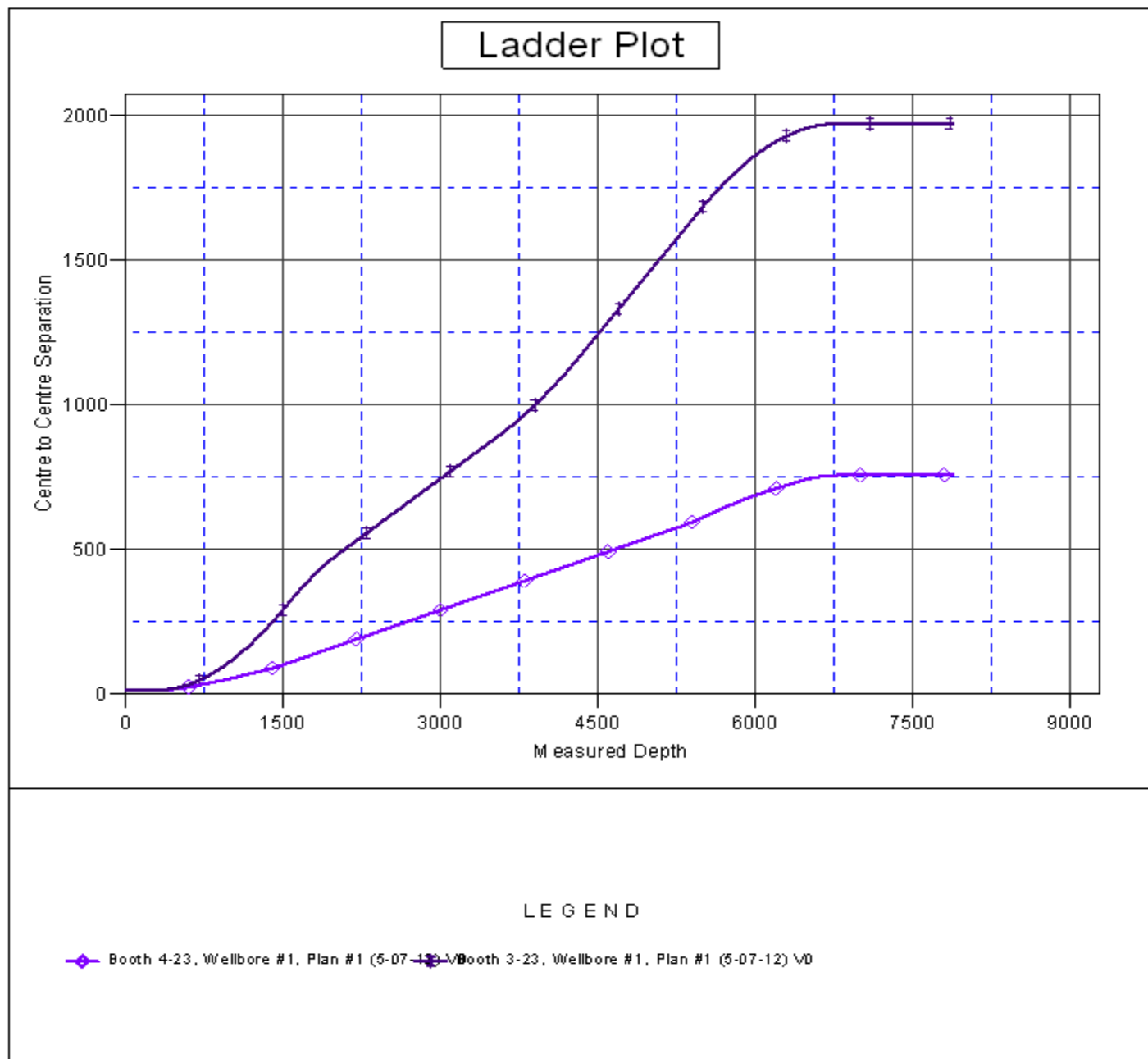
CC - Min centre to center distance or convergent point, SF - min separation factor, ES - min ellipse separation

Company:	BAYSWATER EXPLORATION & PRODUCTION	Local Co-ordinate Reference:	Well Booth 31-23
Project:	SEC.23-T7N-R65W	TVD Reference:	WELL @ 4912.0ft (Original Well Elev)
Reference Site:	Booth 10 Pad Sec.23-T7N-R65W	MD Reference:	WELL @ 4912.0ft (Original Well Elev)
Site Error:	0.0ft	North Reference:	True
Reference Well:	Booth 31-23	Survey Calculation Method:	Minimum Curvature
Well Error:	0.0ft	Output errors are at	2.00 sigma
Reference Wellbore	Wellbore #1	Database:	Landmark
Reference Design:	Plan #1 (5-07-12)	Offset TVD Reference:	Offset Datum

Offset Design Booth 10 Pad Sec.23-T7N-R65W - Booth 4-23 - Wellbore #1 - Plan #1 (5-07-12)												Offset Site Error:	0.0 ft
Survey Program: 0-MWD												Offset Well Error:	0.0 ft
Measured Depth (ft)	Vertical Depth (ft)	Measured Depth (ft)	Vertical Depth (ft)	Reference	Offset	Semi Major Axis Toolface (°)	Offset Wellbore Centre +N/-S (ft)	+E/-W (ft)	Between Centres (ft)	Between Ellipses (ft)	Minimum Separation (ft)	Separation Factor	Warning
5,000.0	4,597.4	4,980.2	4,736.4	40.2	31.0	147.49	-30.1	-1,423.3	544.5	495.7	48.80	11.159	
5,100.0	4,687.1	5,079.4	4,829.4	41.2	31.8	147.50	-31.2	-1,457.8	557.1	507.2	49.94	11.155	
5,200.0	4,776.9	5,178.6	4,922.4	42.1	32.5	147.51	-32.3	-1,492.3	569.8	518.7	51.09	11.152	
5,300.0	4,866.6	5,276.1	5,013.9	43.1	33.2	147.51	-33.4	-1,526.2	582.4	530.2	52.22	11.153	
5,400.0	4,956.4	5,362.1	5,095.0	44.1	33.7	147.63	-34.3	-1,554.6	596.5	543.3	53.13	11.227	
5,500.0	5,046.2	5,447.5	5,176.4	45.0	34.2	147.92	-35.1	-1,580.3	612.6	558.8	53.86	11.374	
5,600.0	5,136.8	5,532.4	5,258.0	45.8	34.5	148.42	-35.8	-1,603.5	629.3	574.9	54.38	11.571	
5,700.0	5,228.9	5,617.0	5,340.1	46.4	34.9	148.90	-36.5	-1,624.2	645.2	590.3	54.83	11.767	
5,800.0	5,322.3	5,700.0	5,421.1	47.1	35.2	149.37	-37.0	-1,642.2	660.3	605.1	55.20	11.963	
5,900.0	5,416.8	5,785.4	5,505.0	47.6	35.5	149.83	-37.5	-1,658.2	674.7	619.2	55.48	12.161	
6,000.0	5,512.5	5,869.2	5,587.8	48.1	35.7	150.27	-38.0	-1,671.4	688.3	632.6	55.68	12.362	
6,100.0	5,609.1	5,952.9	5,670.7	48.6	35.9	150.71	-38.3	-1,682.2	701.2	645.4	55.81	12.564	
6,200.0	5,706.5	6,036.2	5,753.7	48.9	36.1	151.13	-38.6	-1,690.6	713.2	657.4	55.85	12.769	
6,300.0	5,804.7	6,119.4	5,836.6	49.3	36.2	151.54	-38.8	-1,696.6	724.5	668.7	55.82	12.978	
6,400.0	5,903.5	6,200.0	5,917.1	49.5	36.3	151.94	-38.9	-1,700.0	735.0	679.2	55.72	13.190	
6,500.0	6,002.8	6,285.6	6,002.8	49.8	36.4	152.35	-38.9	-1,701.2	744.6	689.1	55.53	13.410	
6,600.0	6,102.4	6,385.2	6,102.4	49.9	36.5	152.73	-38.9	-1,701.2	752.3	697.0	55.32	13.599	
6,700.0	6,202.2	6,485.1	6,202.2	50.0	36.5	152.95	-38.9	-1,701.2	756.9	701.7	55.18	13.716	
6,800.0	6,302.2	6,585.1	6,302.2	50.1	36.6	50.04	-38.9	-1,701.2	758.4	703.2	55.12	13.757	
6,900.0	6,402.2	6,685.1	6,402.2	50.2	36.7	50.04	-38.9	-1,701.2	758.4	703.0	55.33	13.707	
7,000.0	6,502.2	6,785.1	6,502.2	50.2	36.8	50.04	-38.9	-1,701.2	758.4	702.8	55.53	13.657	
7,100.0	6,602.2	6,885.1	6,602.2	50.3	36.9	50.04	-38.9	-1,701.2	758.4	702.6	55.73	13.607	
7,200.0	6,702.2	6,985.1	6,702.2	50.3	37.0	50.04	-38.9	-1,701.2	758.4	702.4	55.94	13.556	
7,300.0	6,802.2	7,085.1	6,802.2	50.4	37.0	50.04	-38.9	-1,701.2	758.4	702.2	56.16	13.505	
7,400.0	6,902.2	7,185.1	6,902.2	50.5	37.1	50.04	-38.9	-1,701.2	758.4	702.0	56.37	13.453	
7,500.0	7,002.2	7,285.1	7,002.2	50.5	37.2	50.04	-38.9	-1,701.2	758.4	701.8	56.59	13.401	
7,600.0	7,102.2	7,385.1	7,102.2	50.6	37.3	50.04	-38.9	-1,701.2	758.4	701.6	56.81	13.349	
7,700.0	7,202.2	7,485.1	7,202.2	50.7	37.4	50.04	-38.9	-1,701.2	758.4	701.3	57.03	13.297	
7,800.0	7,302.2	7,585.1	7,302.2	50.7	37.5	50.04	-38.9	-1,701.2	758.4	701.1	57.26	13.245	
7,887.8	7,390.0	7,672.9	7,390.0	50.8	37.6	50.04	-38.9	-1,701.2	758.4	700.9	57.46	13.199	

Company:	BAYSWATER EXPLORATION & PRODUCTION	Local Co-ordinate Reference:	Well Booth 31-23
Project:	SEC.23-T7N-R65W	TVD Reference:	WELL @ 4912.0ft (Original Well Elev)
Reference Site:	Booth 10 Pad Sec.23-T7N-R65W	MD Reference:	WELL @ 4912.0ft (Original Well Elev)
Site Error:	0.0ft	North Reference:	True
Reference Well:	Booth 31-23	Survey Calculation Method:	Minimum Curvature
Well Error:	0.0ft	Output errors are at	2.00 sigma
Reference Wellbore	Wellbore #1	Database:	Landmark
Reference Design:	Plan #1 (5-07-12)	Offset TVD Reference:	Offset Datum

Reference Depths are relative to WELL @ 4912.0ft (Original Well Elev) Coordinates are relative to: Booth 31-23
 Offset Depths are relative to Offset Datum
 Central Meridian is -105.500000 °
 Coordinate System is US State Plane 1983, Colorado Northern Zone
 Grid Convergence at Surface is: 0.56°



Company:	BAYSWATER EXPLORATION & PRODUCTION	Local Co-ordinate Reference:	Well Booth 31-23
Project:	SEC.23-T7N-R65W	TVD Reference:	WELL @ 4912.0ft (Original Well Elev)
Reference Site:	Booth 10 Pad Sec.23-T7N-R65W	MD Reference:	WELL @ 4912.0ft (Original Well Elev)
Site Error:	0.0ft	North Reference:	True
Reference Well:	Booth 31-23	Survey Calculation Method:	Minimum Curvature
Well Error:	0.0ft	Output errors are at	2.00 sigma
Reference Wellbore	Wellbore #1	Database:	Landmark
Reference Design:	Plan #1 (5-07-12)	Offset TVD Reference:	Offset Datum

Reference Depths are relative to WELL @ 4912.0ft (Original Well Elev) Coordinates are relative to: Booth 31-23
Offset Depths are relative to Offset Datum
Coordinate System is US State Plane 1983, Colorado Northern Zone
Central Meridian is -105.500000 °
Grid Convergence at Surface is: 0.56°

