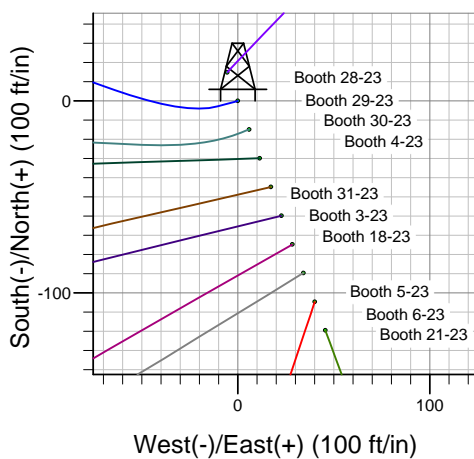
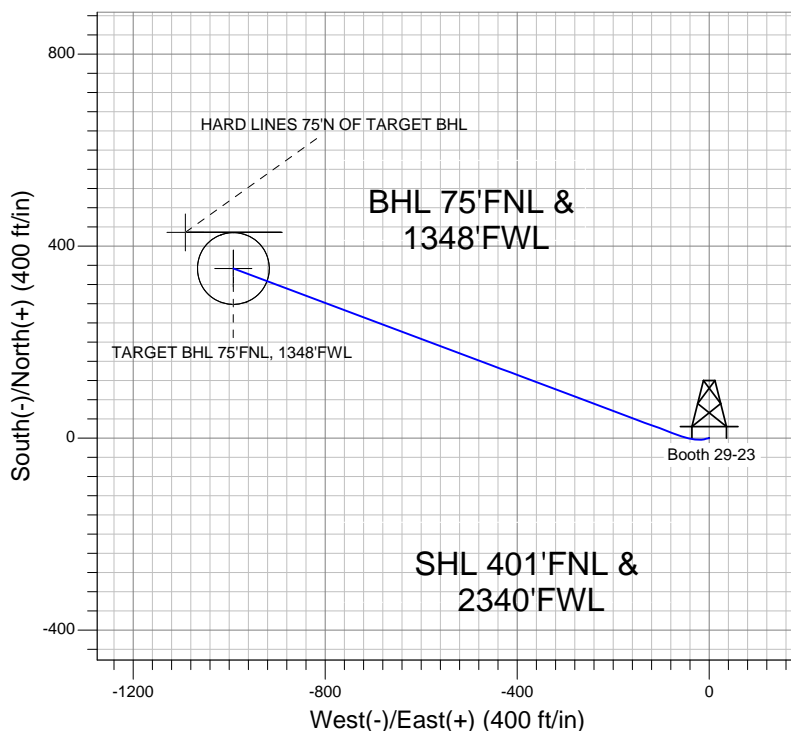
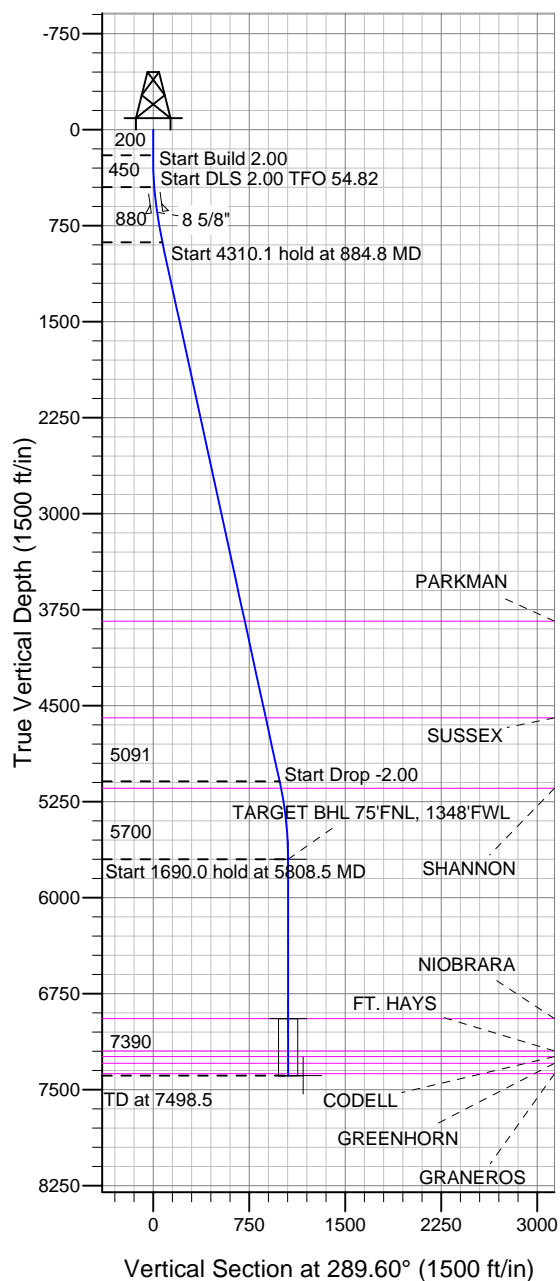


### Well Name: Booth 29-23

Surface Location: Booth 10 Pad Sec.23-T7N-R65W  
North American Datum 1983, US State Plane 1983 Colorado Northern Zone  
Ground Elevation: 4897.0

+N/-S	+E/-W	Northing	Easting	Latitude	Longitude	Slot
0.0	0.0	1449936.49	3241345.90	40.565230	-104.631309	
		Original Well Elev	WELL @ 4913.0ft (Original Well Elev)			

## BAYSWATER EXPLORATION & PRODUCTION



Booth 10 Pad Sec.23-T7N-R65W  
Booth 29-23  
Plan #1 (5-07-12)  
14:07, May 10 2012



Azimuths to True North  
Magnetic North: 8.69°  
Magnetic Field  
Strength: 53137.0snT  
Dip Angle: 67.18°  
Date: 5/7/2012  
Model: IGRF2010

### WELLBORE TARGET DETAILS (LAT/LONG)

Name	TVD	+N/-S	+E/-W	Latitude	Longitude	Shape
TARGET BHL 75'FNL, 1348'FWL	5700.0	353.1	-991.3	40.566199	-104.634877	Point
TARGET CIRCLE 75'FNL & 1348'FWL	6945.0	353.1	-991.3	40.566199	-104.634877	Circle (Radius: 75.0)
HARD LINES 75'N OF TARGET BHL	7390.0	428.1	-1091.3	40.566405	-104.635237	Polygon

### SECTION DETAILS

Sec	MD	Inc	Azi	TVD	+N/-S	+E/-W	DLeg	TFace	VSec	Target
1	0.0	0.00	0.00	0.0	0.0	0.0	0.00	0.00	0.0	
2	200.0	0.00	0.00	200.0	0.0	0.0	0.00	0.00	0.0	
3	450.0	5.00	255.00	449.7	-2.8	-10.5	2.00	255.00	9.0	
4	884.8	12.27	290.55	879.5	8.5	-72.2	2.00	54.82	70.9	
5	5194.9	12.27	290.55	5091.1	330.1	-930.0	0.00	0.00	986.9	
6	5808.5	0.00	0.00	5700.0	353.1	-991.3	2.00	180.00	1052.3	TARGET BHL 75'FNL, 1348'FWL
7	7498.5	0.00	0.00	7390.0	353.1	-991.3	0.00	0.00	1052.3	



# **BAYSWATER EXPLORATION & PRODUCTION**

**SEC.23-T7N-R65W**

**Booth 10 Pad Sec.23-T7N-R65W**

**Booth 29-23**

**Wellbore #1**

**Plan: Plan #1 (5-07-12)**

## **Standard Planning Report**

**10 May, 2012**

<b>Database:</b>	Landmark	<b>Local Co-ordinate Reference:</b>	Well Booth 29-23
<b>Company:</b>	BAYSWATER EXPLORATION & PRODUCTION	<b>TVD Reference:</b>	WELL @ 4913.0ft (Original Well Elev)
<b>Project:</b>	SEC.23-T7N-R65W	<b>MD Reference:</b>	WELL @ 4913.0ft (Original Well Elev)
<b>Site:</b>	Booth 10 Pad Sec.23-T7N-R65W	<b>North Reference:</b>	True
<b>Well:</b>	Booth 29-23	<b>Survey Calculation Method:</b>	Minimum Curvature
<b>Wellbore:</b>	Wellbore #1		
<b>Design:</b>	Plan #1 (5-07-12)		

<b>Project</b>	SEC.23-T7N-R65W, Weld County, CO		
<b>Map System:</b>	US State Plane 1983	<b>System Datum:</b>	Mean Sea Level
<b>Geo Datum:</b>	North American Datum 1983		Using Well Reference Point
<b>Map Zone:</b>	Colorado Northern Zone		Using geodetic scale factor

Booth 10 Pad Sec.23-T7N-R65W					
Site Position:		Northing:	1,449,951.39ft	Latitude:	40.565271
From:	Lat/Long	Easting:	3,241,340.20ft	Longitude:	-104.631329
Position Uncertainty:	0.0 ft	Slot Radius:	"	Grid Convergence:	0.56 °

Well	Booth 29-23					
Well Position	+N/-S	-14.9 ft	Northing:	1,449,936.49 ft	Latitude:	40.565230
	+E/-W	5.6 ft	Easting:	3,241,345.90 ft	Longitude:	-104.631309
Position Uncertainty		0.0 ft	Wellhead Elevation:	ft	Ground Level:	4,897.0 ft

<b>Wellbore</b>	Wellbore #1				
<b>Magnetics</b>	<b>Model Name</b>	<b>Sample Date</b>	<b>Declination (°)</b>	<b>Dip Angle (°)</b>	<b>Field Strength (nT)</b>
	IGRF2010	5/7/2012	8.69	67.18	53,137

<b>Design</b>	Plan #1 (5-07-12)			
<b>Audit Notes:</b>				
<b>Version:</b>	<b>Phase:</b>	PROTOTYPE	<b>Tie On Depth:</b>	0.0
<b>Vertical Section:</b>	<b>Depth From (TVD) (ft)</b>	<b>+N/-S (ft)</b>	<b>+E/-W (ft)</b>	<b>Direction (°)</b>
	0.0	0.0	0.0	289.60

<b>Plan Sections</b>										
Measured Depth (ft)	Inclination (°)	Azimuth (°)	Vertical Depth (ft)	+N/-S (ft)	+E/-W (ft)	Dogleg Rate (°/100ft)	Build Rate (°/100ft)	Turn Rate (°/100ft)	TFO (°)	Target
0.0	0.00	0.00	0.0	0.0	0.0	0.00	0.00	0.00	0.00	
200.0	0.00	0.00	200.0	0.0	0.0	0.00	0.00	0.00	0.00	
450.0	5.00	255.00	449.7	-2.8	-10.5	2.00	2.00	0.00	255.00	
884.8	12.27	290.55	879.5	8.5	-72.2	2.00	1.67	8.18	54.82	
5,194.9	12.27	290.55	5,091.1	330.1	-930.0	0.00	0.00	0.00	0.00	
5,808.5	0.00	0.00	5,700.0	353.1	-991.3	2.00	-2.00	0.00	180.00	TARGET BHL 75'FI
7,498.5	0.00	0.00	7,390.0	353.1	-991.3	0.00	0.00	0.00	0.00	

<b>Database:</b>	Landmark	<b>Local Co-ordinate Reference:</b>	Well Booth 29-23
<b>Company:</b>	BAYSWATER EXPLORATION & PRODUCTION	<b>TVD Reference:</b>	WELL @ 4913.0ft (Original Well Elev)
<b>Project:</b>	SEC.23-T7N-R65W	<b>MD Reference:</b>	WELL @ 4913.0ft (Original Well Elev)
<b>Site:</b>	Booth 10 Pad Sec.23-T7N-R65W	<b>North Reference:</b>	True
<b>Well:</b>	Booth 29-23	<b>Survey Calculation Method:</b>	Minimum Curvature
<b>Wellbore:</b>	Wellbore #1		
<b>Design:</b>	Plan #1 (5-07-12)		

#### Planned Survey

Measured Depth (ft)	Inclination (°)	Azimuth (°)	Vertical Depth (ft)	+N/-S (ft)	+E/-W (ft)	Vertical Section (ft)	Dogleg Rate (°/100ft)	Build Rate (°/100ft)	Turn Rate (°/100ft)
0.0	0.00	0.00	0.0	0.0	0.0	0.0	0.00	0.00	0.00
40.0	0.00	0.00	40.0	0.0	0.0	0.0	0.00	0.00	0.00
80.0	0.00	0.00	80.0	0.0	0.0	0.0	0.00	0.00	0.00
120.0	0.00	0.00	120.0	0.0	0.0	0.0	0.00	0.00	0.00
160.0	0.00	0.00	160.0	0.0	0.0	0.0	0.00	0.00	0.00
200.0	0.00	0.00	200.0	0.0	0.0	0.0	0.00	0.00	0.00
240.0	0.80	255.00	240.0	-0.1	-0.3	0.2	2.00	2.00	0.00
280.0	1.60	255.00	280.0	-0.3	-1.1	0.9	2.00	2.00	0.00
320.0	2.40	255.00	320.0	-0.7	-2.4	2.1	2.00	2.00	0.00
360.0	3.20	255.00	359.9	-1.2	-4.3	3.7	2.00	2.00	0.00
400.0	4.00	255.00	399.8	-1.8	-6.7	5.7	2.00	2.00	0.00
440.0	4.80	255.00	439.7	-2.6	-9.7	8.3	2.00	2.00	0.00
450.0	5.00	255.00	449.7	-2.8	-10.5	9.0	2.00	2.00	0.00
480.0	5.37	260.25	479.6	-3.4	-13.2	11.3	2.00	1.23	17.50
520.0	5.92	266.17	519.4	-3.9	-17.1	14.8	2.00	1.37	14.80
560.0	6.52	271.04	559.1	-3.9	-21.4	18.8	2.00	1.50	12.18
600.0	7.16	275.07	598.8	-3.7	-26.2	23.4	2.00	1.60	10.07
640.0	7.83	278.43	638.5	-3.1	-31.3	28.5	2.00	1.67	8.39
646.6	7.94	278.93	645.0	-2.9	-32.2	29.4	2.00	1.71	7.57
<b>8 5/8"</b>									
680.0	8.52	281.25	678.1	-2.1	-36.9	34.1	2.00	1.73	6.96
720.0	9.23	283.65	717.6	-0.8	-43.0	40.2	2.00	1.77	5.99
760.0	9.95	285.71	757.1	0.9	-49.4	46.9	2.00	1.81	5.14
800.0	10.69	287.48	796.4	3.0	-56.3	54.0	2.00	1.83	4.44
840.0	11.43	289.03	835.7	5.4	-63.6	61.7	2.00	1.86	3.88
880.0	12.18	290.40	874.8	8.2	-71.3	69.9	2.00	1.87	3.41
884.8	12.27	290.55	879.5	8.5	-72.2	70.9	2.00	1.88	3.18
920.0	12.27	290.55	913.9	11.1	-79.2	78.4	0.00	0.00	0.00
960.0	12.27	290.55	953.0	14.1	-87.2	86.9	0.00	0.00	0.00
1,000.0	12.27	290.55	992.1	17.1	-95.1	95.4	0.00	0.00	0.00
1,040.0	12.27	290.55	1,031.2	20.1	-103.1	103.9	0.00	0.00	0.00
1,080.0	12.27	290.55	1,070.3	23.1	-111.1	112.4	0.00	0.00	0.00
1,120.0	12.27	290.55	1,109.3	26.1	-119.0	120.9	0.00	0.00	0.00
1,160.0	12.27	290.55	1,148.4	29.0	-127.0	129.4	0.00	0.00	0.00
1,200.0	12.27	290.55	1,187.5	32.0	-135.0	137.9	0.00	0.00	0.00
1,240.0	12.27	290.55	1,226.6	35.0	-142.9	146.4	0.00	0.00	0.00
1,280.0	12.27	290.55	1,265.7	38.0	-150.9	154.9	0.00	0.00	0.00
1,320.0	12.27	290.55	1,304.8	41.0	-158.8	163.4	0.00	0.00	0.00
1,360.0	12.27	290.55	1,343.9	44.0	-166.8	171.9	0.00	0.00	0.00
1,400.0	12.27	290.55	1,382.9	47.0	-174.8	180.4	0.00	0.00	0.00
1,440.0	12.27	290.55	1,422.0	49.9	-182.7	188.9	0.00	0.00	0.00
1,480.0	12.27	290.55	1,461.1	52.9	-190.7	197.4	0.00	0.00	0.00
1,520.0	12.27	290.55	1,500.2	55.9	-198.6	205.9	0.00	0.00	0.00
1,560.0	12.27	290.55	1,539.3	58.9	-206.6	214.4	0.00	0.00	0.00
1,600.0	12.27	290.55	1,578.4	61.9	-214.6	222.9	0.00	0.00	0.00
1,640.0	12.27	290.55	1,617.5	64.9	-222.5	231.4	0.00	0.00	0.00
1,680.0	12.27	290.55	1,656.5	67.8	-230.5	239.9	0.00	0.00	0.00
1,720.0	12.27	290.55	1,695.6	70.8	-238.4	248.4	0.00	0.00	0.00
1,760.0	12.27	290.55	1,734.7	73.8	-246.4	256.9	0.00	0.00	0.00
1,800.0	12.27	290.55	1,773.8	76.8	-254.4	265.4	0.00	0.00	0.00
1,840.0	12.27	290.55	1,812.9	79.8	-262.3	273.9	0.00	0.00	0.00
1,880.0	12.27	290.55	1,852.0	82.8	-270.3	282.4	0.00	0.00	0.00
1,920.0	12.27	290.55	1,891.1	85.8	-278.2	290.9	0.00	0.00	0.00

<b>Database:</b>	Landmark	<b>Local Co-ordinate Reference:</b>	Well Booth 29-23
<b>Company:</b>	BAYSWATER EXPLORATION & PRODUCTION	<b>TVD Reference:</b>	WELL @ 4913.0ft (Original Well Elev)
<b>Project:</b>	SEC.23-T7N-R65W	<b>MD Reference:</b>	WELL @ 4913.0ft (Original Well Elev)
<b>Site:</b>	Booth 10 Pad Sec.23-T7N-R65W	<b>North Reference:</b>	True
<b>Well:</b>	Booth 29-23	<b>Survey Calculation Method:</b>	Minimum Curvature
<b>Wellbore:</b>	Wellbore #1		
<b>Design:</b>	Plan #1 (5-07-12)		

Planned Survey									
Measured Depth (ft)	Inclination (°)	Azimuth (°)	Vertical Depth (ft)	+N/-S (ft)	+E/-W (ft)	Vertical Section (ft)	Dogleg Rate (°/100ft)	Build Rate (°/100ft)	Turn Rate (°/100ft)
1,960.0	12.27	290.55	1,930.1	88.7	-286.2	299.4	0.00	0.00	0.00
2,000.0	12.27	290.55	1,969.2	91.7	-294.2	307.9	0.00	0.00	0.00
2,040.0	12.27	290.55	2,008.3	94.7	-302.1	316.4	0.00	0.00	0.00
2,080.0	12.27	290.55	2,047.4	97.7	-310.1	324.9	0.00	0.00	0.00
2,120.0	12.27	290.55	2,086.5	100.7	-318.1	333.4	0.00	0.00	0.00
2,160.0	12.27	290.55	2,125.6	103.7	-326.0	341.9	0.00	0.00	0.00
2,200.0	12.27	290.55	2,164.7	106.6	-334.0	350.4	0.00	0.00	0.00
2,240.0	12.27	290.55	2,203.7	109.6	-341.9	358.9	0.00	0.00	0.00
2,280.0	12.27	290.55	2,242.8	112.6	-349.9	367.4	0.00	0.00	0.00
2,320.0	12.27	290.55	2,281.9	115.6	-357.9	375.9	0.00	0.00	0.00
2,360.0	12.27	290.55	2,321.0	118.6	-365.8	384.4	0.00	0.00	0.00
2,400.0	12.27	290.55	2,360.1	121.6	-373.8	392.9	0.00	0.00	0.00
2,440.0	12.27	290.55	2,399.2	124.5	-381.7	401.4	0.00	0.00	0.00
2,480.0	12.27	290.55	2,438.3	127.5	-389.7	409.9	0.00	0.00	0.00
2,520.0	12.27	290.55	2,477.3	130.5	-397.7	418.4	0.00	0.00	0.00
2,560.0	12.27	290.55	2,516.4	133.5	-405.6	426.9	0.00	0.00	0.00
2,600.0	12.27	290.55	2,555.5	136.5	-413.6	435.4	0.00	0.00	0.00
2,640.0	12.27	290.55	2,594.6	139.5	-421.5	443.9	0.00	0.00	0.00
2,680.0	12.27	290.55	2,633.7	142.5	-429.5	452.4	0.00	0.00	0.00
2,720.0	12.27	290.55	2,672.8	145.4	-437.5	460.9	0.00	0.00	0.00
2,760.0	12.27	290.55	2,711.9	148.4	-445.4	469.4	0.00	0.00	0.00
2,800.0	12.27	290.55	2,751.0	151.4	-453.4	477.9	0.00	0.00	0.00
2,840.0	12.27	290.55	2,790.0	154.4	-461.4	486.4	0.00	0.00	0.00
2,880.0	12.27	290.55	2,829.1	157.4	-469.3	494.9	0.00	0.00	0.00
2,920.0	12.27	290.55	2,868.2	160.4	-477.3	503.4	0.00	0.00	0.00
2,960.0	12.27	290.55	2,907.3	163.3	-485.2	511.9	0.00	0.00	0.00
3,000.0	12.27	290.55	2,946.4	166.3	-493.2	520.4	0.00	0.00	0.00
3,040.0	12.27	290.55	2,985.5	169.3	-501.2	528.9	0.00	0.00	0.00
3,080.0	12.27	290.55	3,024.6	172.3	-509.1	537.4	0.00	0.00	0.00
3,120.0	12.27	290.55	3,063.6	175.3	-517.1	545.9	0.00	0.00	0.00
3,160.0	12.27	290.55	3,102.7	178.3	-525.0	554.4	0.00	0.00	0.00
3,200.0	12.27	290.55	3,141.8	181.2	-533.0	562.9	0.00	0.00	0.00
3,240.0	12.27	290.55	3,180.9	184.2	-541.0	571.4	0.00	0.00	0.00
3,280.0	12.27	290.55	3,220.0	187.2	-548.9	579.9	0.00	0.00	0.00
3,320.0	12.27	290.55	3,259.1	190.2	-556.9	588.4	0.00	0.00	0.00
3,360.0	12.27	290.55	3,298.2	193.2	-564.8	596.9	0.00	0.00	0.00
3,400.0	12.27	290.55	3,337.2	196.2	-572.8	605.4	0.00	0.00	0.00
3,440.0	12.27	290.55	3,376.3	199.2	-580.8	613.9	0.00	0.00	0.00
3,480.0	12.27	290.55	3,415.4	202.1	-588.7	622.4	0.00	0.00	0.00
3,520.0	12.27	290.55	3,454.5	205.1	-596.7	630.9	0.00	0.00	0.00
3,560.0	12.27	290.55	3,493.6	208.1	-604.6	639.4	0.00	0.00	0.00
3,600.0	12.27	290.55	3,532.7	211.1	-612.6	647.9	0.00	0.00	0.00
3,640.0	12.27	290.55	3,571.8	214.1	-620.6	656.4	0.00	0.00	0.00
3,680.0	12.27	290.55	3,610.8	217.1	-628.5	664.9	0.00	0.00	0.00
3,720.0	12.27	290.55	3,649.9	220.0	-636.5	673.4	0.00	0.00	0.00
3,760.0	12.27	290.55	3,689.0	223.0	-644.5	681.9	0.00	0.00	0.00
3,800.0	12.27	290.55	3,728.1	226.0	-652.4	690.4	0.00	0.00	0.00
3,840.0	12.27	290.55	3,767.2	229.0	-660.4	698.9	0.00	0.00	0.00
3,880.0	12.27	290.55	3,806.3	232.0	-668.3	707.4	0.00	0.00	0.00
3,914.5	12.27	290.55	3,840.0	234.6	-675.2	714.8	0.00	0.00	0.00
<b>PARKMAN</b>									
3,920.0	12.27	290.55	3,845.4	235.0	-676.3	715.9	0.00	0.00	0.00
3,960.0	12.27	290.55	3,884.4	238.0	-684.3	724.4	0.00	0.00	0.00

<b>Database:</b>	Landmark	<b>Local Co-ordinate Reference:</b>	Well Booth 29-23
<b>Company:</b>	BAYSWATER EXPLORATION & PRODUCTION	<b>TVD Reference:</b>	WELL @ 4913.0ft (Original Well Elev)
<b>Project:</b>	SEC.23-T7N-R65W	<b>MD Reference:</b>	WELL @ 4913.0ft (Original Well Elev)
<b>Site:</b>	Booth 10 Pad Sec.23-T7N-R65W	<b>North Reference:</b>	True
<b>Well:</b>	Booth 29-23	<b>Survey Calculation Method:</b>	Minimum Curvature
<b>Wellbore:</b>	Wellbore #1		
<b>Design:</b>	Plan #1 (5-07-12)		

Planned Survey									
Measured Depth (ft)	Inclination (°)	Azimuth (°)	Vertical Depth (ft)	+N/-S (ft)	+E/-W (ft)	Vertical Section (ft)	Dogleg Rate (°/100ft)	Build Rate (°/100ft)	Turn Rate (°/100ft)
4,000.0	12.27	290.55	3,923.5	240.9	-692.2	732.9	0.00	0.00	0.00
4,040.0	12.27	290.55	3,962.6	243.9	-700.2	741.4	0.00	0.00	0.00
4,080.0	12.27	290.55	4,001.7	246.9	-708.1	749.9	0.00	0.00	0.00
4,120.0	12.27	290.55	4,040.8	249.9	-716.1	758.4	0.00	0.00	0.00
4,160.0	12.27	290.55	4,079.9	252.9	-724.1	766.9	0.00	0.00	0.00
4,200.0	12.27	290.55	4,119.0	255.9	-732.0	775.4	0.00	0.00	0.00
4,240.0	12.27	290.55	4,158.0	258.8	-740.0	783.9	0.00	0.00	0.00
4,280.0	12.27	290.55	4,197.1	261.8	-747.9	792.4	0.00	0.00	0.00
4,320.0	12.27	290.55	4,236.2	264.8	-755.9	800.9	0.00	0.00	0.00
4,360.0	12.27	290.55	4,275.3	267.8	-763.9	809.4	0.00	0.00	0.00
4,400.0	12.27	290.55	4,314.4	270.8	-771.8	817.9	0.00	0.00	0.00
4,440.0	12.27	290.55	4,353.5	273.8	-779.8	826.4	0.00	0.00	0.00
4,480.0	12.27	290.55	4,392.6	276.7	-787.7	834.9	0.00	0.00	0.00
4,520.0	12.27	290.55	4,431.7	279.7	-795.7	843.4	0.00	0.00	0.00
4,560.0	12.27	290.55	4,470.7	282.7	-803.7	851.9	0.00	0.00	0.00
4,600.0	12.27	290.55	4,509.8	285.7	-811.6	860.4	0.00	0.00	0.00
4,640.0	12.27	290.55	4,548.9	288.7	-819.6	868.9	0.00	0.00	0.00
4,680.0	12.27	290.55	4,588.0	291.7	-827.6	877.4	0.00	0.00	0.00
4,687.2	12.27	290.55	4,595.0	292.2	-829.0	879.0	0.00	0.00	0.00
<b>SUSSEX</b>									
4,720.0	12.27	290.55	4,627.1	294.7	-835.5	885.9	0.00	0.00	0.00
4,760.0	12.27	290.55	4,666.2	297.6	-843.5	894.4	0.00	0.00	0.00
4,800.0	12.27	290.55	4,705.3	300.6	-851.4	902.9	0.00	0.00	0.00
4,840.0	12.27	290.55	4,744.3	303.6	-859.4	911.4	0.00	0.00	0.00
4,880.0	12.27	290.55	4,783.4	306.6	-867.4	919.9	0.00	0.00	0.00
4,920.0	12.27	290.55	4,822.5	309.6	-875.3	928.5	0.00	0.00	0.00
4,960.0	12.27	290.55	4,861.6	312.6	-883.3	937.0	0.00	0.00	0.00
5,000.0	12.27	290.55	4,900.7	315.5	-891.2	945.5	0.00	0.00	0.00
5,040.0	12.27	290.55	4,939.8	318.5	-899.2	954.0	0.00	0.00	0.00
5,080.0	12.27	290.55	4,978.9	321.5	-907.2	962.5	0.00	0.00	0.00
5,120.0	12.27	290.55	5,017.9	324.5	-915.1	971.0	0.00	0.00	0.00
5,160.0	12.27	290.55	5,057.0	327.5	-923.1	979.5	0.00	0.00	0.00
5,194.9	12.27	290.55	5,091.1	330.1	-930.0	986.9	0.00	0.00	0.00
5,200.0	12.17	290.55	5,096.1	330.5	-931.0	988.0	2.00	-2.00	0.00
5,240.0	11.37	290.55	5,135.3	333.3	-938.7	996.1	2.00	-2.00	0.00
5,249.9	11.17	290.55	5,145.0	334.0	-940.5	998.0	2.00	-2.00	0.00
<b>SHANNON</b>									
5,280.0	10.57	290.55	5,174.5	336.0	-945.8	1,003.7	2.00	-2.00	0.00
5,320.0	9.77	290.55	5,213.9	338.5	-952.4	1,010.8	2.00	-2.00	0.00
5,360.0	8.97	290.55	5,253.4	340.8	-958.5	1,017.3	2.00	-2.00	0.00
5,400.0	8.17	290.55	5,292.9	342.9	-964.1	1,023.2	2.00	-2.00	0.00
5,440.0	7.37	290.55	5,332.6	344.8	-969.2	1,028.7	2.00	-2.00	0.00
5,480.0	6.57	290.55	5,372.3	346.5	-973.7	1,033.5	2.00	-2.00	0.00
5,520.0	5.77	290.55	5,412.0	348.0	-977.7	1,037.8	2.00	-2.00	0.00
5,560.0	4.97	290.55	5,451.9	349.3	-981.2	1,041.5	2.00	-2.00	0.00
5,600.0	4.17	290.55	5,491.7	350.4	-984.2	1,044.7	2.00	-2.00	0.00
5,640.0	3.37	290.55	5,531.6	351.3	-986.7	1,047.4	2.00	-2.00	0.00
5,680.0	2.57	290.55	5,571.6	352.0	-988.6	1,049.4	2.00	-2.00	0.00
5,720.0	1.77	290.55	5,611.6	352.6	-990.0	1,050.9	2.00	-2.00	0.00
5,760.0	0.97	290.55	5,651.6	352.9	-990.9	1,051.9	2.00	-2.00	0.00
5,800.0	0.17	290.55	5,691.5	353.1	-991.3	1,052.3	2.00	-2.00	0.00
5,808.5	0.00	0.00	5,700.0	353.1	-991.3	1,052.3	2.00	-2.00	0.00
<b>TARGET BHL 75'FNL, 1348'FWL</b>									

<b>Database:</b>	Landmark	<b>Local Co-ordinate Reference:</b>	Well Booth 29-23
<b>Company:</b>	BAYSWATER EXPLORATION & PRODUCTION	<b>TVD Reference:</b>	WELL @ 4913.0ft (Original Well Elev)
<b>Project:</b>	SEC.23-T7N-R65W	<b>MD Reference:</b>	WELL @ 4913.0ft (Original Well Elev)
<b>Site:</b>	Booth 10 Pad Sec.23-T7N-R65W	<b>North Reference:</b>	True
<b>Well:</b>	Booth 29-23	<b>Survey Calculation Method:</b>	Minimum Curvature
<b>Wellbore:</b>	Wellbore #1		
<b>Design:</b>	Plan #1 (5-07-12)		

Planned Survey									
Measured Depth (ft)	Inclination (°)	Azimuth (°)	Vertical Depth (ft)	+N/-S (ft)	+E/-W (ft)	Vertical Section (ft)	Dogleg Rate (°/100ft)	Build Rate (°/100ft)	Turn Rate (°/100ft)
5,840.0	0.00	0.00	5,731.5	353.1	-991.3	1,052.3	0.00	0.00	0.00
5,880.0	0.00	0.00	5,771.5	353.1	-991.3	1,052.3	0.00	0.00	0.00
5,920.0	0.00	0.00	5,811.5	353.1	-991.3	1,052.3	0.00	0.00	0.00
5,960.0	0.00	0.00	5,851.5	353.1	-991.3	1,052.3	0.00	0.00	0.00
6,000.0	0.00	0.00	5,891.5	353.1	-991.3	1,052.3	0.00	0.00	0.00
6,040.0	0.00	0.00	5,931.5	353.1	-991.3	1,052.3	0.00	0.00	0.00
6,080.0	0.00	0.00	5,971.5	353.1	-991.3	1,052.3	0.00	0.00	0.00
6,120.0	0.00	0.00	6,011.5	353.1	-991.3	1,052.3	0.00	0.00	0.00
6,160.0	0.00	0.00	6,051.5	353.1	-991.3	1,052.3	0.00	0.00	0.00
6,200.0	0.00	0.00	6,091.5	353.1	-991.3	1,052.3	0.00	0.00	0.00
6,240.0	0.00	0.00	6,131.5	353.1	-991.3	1,052.3	0.00	0.00	0.00
6,280.0	0.00	0.00	6,171.5	353.1	-991.3	1,052.3	0.00	0.00	0.00
6,320.0	0.00	0.00	6,211.5	353.1	-991.3	1,052.3	0.00	0.00	0.00
6,360.0	0.00	0.00	6,251.5	353.1	-991.3	1,052.3	0.00	0.00	0.00
6,400.0	0.00	0.00	6,291.5	353.1	-991.3	1,052.3	0.00	0.00	0.00
6,440.0	0.00	0.00	6,331.5	353.1	-991.3	1,052.3	0.00	0.00	0.00
6,480.0	0.00	0.00	6,371.5	353.1	-991.3	1,052.3	0.00	0.00	0.00
6,520.0	0.00	0.00	6,411.5	353.1	-991.3	1,052.3	0.00	0.00	0.00
6,560.0	0.00	0.00	6,451.5	353.1	-991.3	1,052.3	0.00	0.00	0.00
6,600.0	0.00	0.00	6,491.5	353.1	-991.3	1,052.3	0.00	0.00	0.00
6,640.0	0.00	0.00	6,531.5	353.1	-991.3	1,052.3	0.00	0.00	0.00
6,680.0	0.00	0.00	6,571.5	353.1	-991.3	1,052.3	0.00	0.00	0.00
6,720.0	0.00	0.00	6,611.5	353.1	-991.3	1,052.3	0.00	0.00	0.00
6,760.0	0.00	0.00	6,651.5	353.1	-991.3	1,052.3	0.00	0.00	0.00
6,800.0	0.00	0.00	6,691.5	353.1	-991.3	1,052.3	0.00	0.00	0.00
6,840.0	0.00	0.00	6,731.5	353.1	-991.3	1,052.3	0.00	0.00	0.00
6,880.0	0.00	0.00	6,771.5	353.1	-991.3	1,052.3	0.00	0.00	0.00
6,920.0	0.00	0.00	6,811.5	353.1	-991.3	1,052.3	0.00	0.00	0.00
6,960.0	0.00	0.00	6,851.5	353.1	-991.3	1,052.3	0.00	0.00	0.00
7,000.0	0.00	0.00	6,891.5	353.1	-991.3	1,052.3	0.00	0.00	0.00
7,040.0	0.00	0.00	6,931.5	353.1	-991.3	1,052.3	0.00	0.00	0.00
7,053.5	0.00	0.00	6,945.0	353.1	-991.3	1,052.3	0.00	0.00	0.00
<b>NIOBRARA - TARGET CIRCLE 75'FNL &amp; 1348'FWL</b>									
7,080.0	0.00	0.00	6,971.5	353.1	-991.3	1,052.3	0.00	0.00	0.00
7,120.0	0.00	0.00	7,011.5	353.1	-991.3	1,052.3	0.00	0.00	0.00
7,160.0	0.00	0.00	7,051.5	353.1	-991.3	1,052.3	0.00	0.00	0.00
7,200.0	0.00	0.00	7,091.5	353.1	-991.3	1,052.3	0.00	0.00	0.00
7,240.0	0.00	0.00	7,131.5	353.1	-991.3	1,052.3	0.00	0.00	0.00
7,280.0	0.00	0.00	7,171.5	353.1	-991.3	1,052.3	0.00	0.00	0.00
7,305.5	0.00	0.00	7,197.0	353.1	-991.3	1,052.3	0.00	0.00	0.00
<b>FT. HAYS</b>									
7,320.0	0.00	0.00	7,211.5	353.1	-991.3	1,052.3	0.00	0.00	0.00
7,349.5	0.00	0.00	7,241.0	353.1	-991.3	1,052.3	0.00	0.00	0.00
<b>CODELL</b>									
7,360.0	0.00	0.00	7,251.5	353.1	-991.3	1,052.3	0.00	0.00	0.00
7,400.0	0.00	0.00	7,291.5	353.1	-991.3	1,052.3	0.00	0.00	0.00
7,401.5	0.00	0.00	7,293.0	353.1	-991.3	1,052.3	0.00	0.00	0.00
<b>GREENHORN</b>									
7,440.0	0.00	0.00	7,331.5	353.1	-991.3	1,052.3	0.00	0.00	0.00
7,480.0	0.00	0.00	7,371.5	353.1	-991.3	1,052.3	0.00	0.00	0.00
7,483.5	0.00	0.00	7,375.0	353.1	-991.3	1,052.3	0.00	0.00	0.00
<b>GRANEROS</b>									

<b>Database:</b>	Landmark	<b>Local Co-ordinate Reference:</b>	Well Booth 29-23
<b>Company:</b>	BAYSWATER EXPLORATION & PRODUCTION	<b>TVD Reference:</b>	WELL @ 4913.0ft (Original Well Elev)
<b>Project:</b>	SEC.23-T7N-R65W	<b>MD Reference:</b>	WELL @ 4913.0ft (Original Well Elev)
<b>Site:</b>	Booth 10 Pad Sec.23-T7N-R65W	<b>North Reference:</b>	True
<b>Well:</b>	Booth 29-23	<b>Survey Calculation Method:</b>	Minimum Curvature
<b>Wellbore:</b>	Wellbore #1		
<b>Design:</b>	Plan #1 (5-07-12)		

Planned Survey									
Measured Depth (ft)	Inclination (°)	Azimuth (°)	Vertical Depth (ft)	+N/-S (ft)	+E/-W (ft)	Vertical Section (ft)	Dogleg Rate (°/100ft)	Build Rate (°/100ft)	Turn Rate (°/100ft)
7,498.5	0.00	0.00	7,390.0	353.1	-991.3	1,052.3	0.00	0.00	0.00
HARD LINES 75'N OF TARGET BHL									

Targets									
Target Name	- hit/miss target	Dip Angle (°)	Dip Dir. (°)	TVD (ft)	+N/-S (ft)	+E/-W (ft)	Northing (ft)	Easting (ft)	
HARD LINES 75'N OF	- plan misses target center by 125.0ft at 7498.5ft MD (7390.0 TVD, 353.1 N, -991.3 E)	0.00	0.00	7,390.0	428.1	-1,091.3	1,450,353.87	3,240,250.49	40.566405
- Polygon									-104.635237
Point 1				7,390.0	0.0	0.0	1,450,353.87	3,240,250.49	
Point 2				7,390.0	0.0	200.0	1,450,355.83	3,240,450.47	
TARGET BHL 75'FNL	- plan hits target center	0.00	0.00	5,700.0	353.1	-991.3	1,450,279.81	3,240,351.20	40.566199
- Point									-104.634877
TARGET CIRCLE 75'	- plan hits target center	0.00	0.00	6,945.0	353.1	-991.3	1,450,279.81	3,240,351.20	40.566199
- Circle (radius 75.0)									-104.634877

Casing Points					
Measured Depth (ft)	Vertical Depth (ft)	Name		Casing Diameter (")	Hole Diameter (")
646.6	645.0	8 5/8"		8-5/8	12-1/4

Formations						
Measured Depth (ft)	Vertical Depth (ft)	Name	Lithology	Dip (°)	Dip Direction (°)	
3,914.5	3,840.0	PARKMAN		0.00		
4,687.2	4,595.0	SUSSEX		0.00		
5,249.9	5,145.0	SHANNON		0.00		
7,053.5	6,945.0	NIOBRARA		0.00		
7,305.5	7,197.0	FT. HAYS		0.00		
7,349.5	7,241.0	CODELL		0.00		
7,401.5	7,293.0	GREENHORN		0.00		
7,483.5	7,375.0	GRANEROS		0.00		





# **BAYSWATER EXPLORATION & PRODUCTION**

**SEC.23-T7N-R65W**

**Booth 10 Pad Sec.23-T7N-R65W**

**Booth 29-23**

**Wellbore #1**

**Plan #1 (5-07-12)**

## **Anticollision Report**

**10 May, 2012**

<b>Company:</b>	BAYSWATER EXPLORATION & PRODUCTION	<b>Local Co-ordinate Reference:</b>	Well Booth 29-23
<b>Project:</b>	SEC.23-T7N-R65W	<b>TVD Reference:</b>	WELL @ 4913.0ft (Original Well Elev)
<b>Reference Site:</b>	Booth 10 Pad Sec.23-T7N-R65W	<b>MD Reference:</b>	WELL @ 4913.0ft (Original Well Elev)
<b>Site Error:</b>	0.0ft	<b>North Reference:</b>	True
<b>Reference Well:</b>	Booth 29-23	<b>Survey Calculation Method:</b>	Minimum Curvature
<b>Well Error:</b>	0.0ft	<b>Output errors are at</b>	2.00 sigma
<b>Reference Wellbore</b>	Wellbore #1	<b>Database:</b>	Landmark
<b>Reference Design:</b>	Plan #1 (5-07-12)	<b>Offset TVD Reference:</b>	Offset Datum

<b>Reference</b>	Plan #1 (5-07-12)		
<b>Filter type:</b>	NO GLOBAL FILTER: Using user defined selection & filtering criteria		
<b>Interpolation Method:</b>	MD Interval 100.0ft	<b>Error Model:</b>	ISCWSA
<b>Depth Range:</b>	Unlimited	<b>Scan Method:</b>	Closest Approach 3D
<b>Results Limited by:</b>	Maximum center-center distance of 10,000.0ft	<b>Error Surface:</b>	Elliptical Conic
<b>Warning Levels Evaluated at:</b>	2.00 Sigma		

<b>Survey Tool Program</b>	<b>Date</b> 5/7/2012			
<b>From (ft)</b>	<b>To (ft)</b>	<b>Survey (Wellbore)</b>	<b>Tool Name</b>	<b>Description</b>
0.0	7,498.5	Plan #1 (5-07-12) (Wellbore #1)	MWD	MWD - Standard

<b>Summary</b>						
<b>Site Name</b>	<b>Reference Measured Depth (ft)</b>	<b>Offset Measured Depth (ft)</b>	<b>Distance Between Centres (ft)</b>	<b>Between Ellipses (ft)</b>	<b>Separation Factor</b>	<b>Warning</b>
<b>Offset Well - Wellbore - Design</b>						
Booth 10 Pad Sec.23-T7N-R65W						
Booth 28-23 - Wellbore #1 - Plan #1 (5-07-12)	292.7	292.7	15.9	14.8	14.711	CC
Booth 28-23 - Wellbore #1 - Plan #1 (5-07-12)	300.0	300.0	15.9	14.8	14.293	ES
Booth 28-23 - Wellbore #1 - Plan #1 (5-07-12)	500.0	499.5	20.9	18.9	10.359	SF
Booth 30-23 - Wellbore #1 - Plan #1 (5-07-12)	200.0	200.0	16.0	15.4	23.782	CC
Booth 30-23 - Wellbore #1 - Plan #1 (5-07-12)	300.0	300.0	16.2	15.1	14.767	ES
Booth 30-23 - Wellbore #1 - Plan #1 (5-07-12)	1,000.0	1,001.3	36.9	31.2	6.501	SF

<b>Offset Design</b>												
Booth 10 Pad Sec.23-T7N-R65W - Booth 28-23 - Wellbore #1 - Plan #1 (5-07-12)												
Survey Program: 0-MWD												
<b>Reference</b>	<b>Offset</b>	<b>Semi Major Axis</b>			<b>Distance</b>							
<b>Measured Depth (ft)</b>	<b>Vertical Depth (ft)</b>	<b>Measured Depth (ft)</b>	<b>Vertical Depth (ft)</b>	<b>Reference (ft)</b>	<b>Offset (ft)</b>	<b>Highside Toolface (°)</b>	<b>Offset Wellbore Centre +N/-S (ft)</b>	<b>+E/-W (ft)</b>	<b>Between Centres (ft)</b>	<b>Between Ellipses (ft)</b>	<b>Minimum Separation (ft)</b>	<b>Separation Factor</b>
0.0	0.0	0.0	0.0	0.0	0.0	-20.40	14.9	-5.6	15.9	15.9	0.00	N/A
100.0	100.0	100.0	100.0	0.1	0.1	-20.40	14.9	-5.6	15.9	15.7	0.22	70.923
200.0	200.0	200.0	200.0	0.3	0.3	-20.40	14.9	-5.6	15.9	15.3	0.67	23.641
292.7	292.7	292.7	292.7	0.5	0.5	90.00	14.9	-5.6	15.9	14.8	1.08	14.711 CC
300.0	300.0	300.0	300.0	0.5	0.6	90.88	14.9	-5.6	15.9	14.8	1.11	14.293 ES
400.0	399.8	399.8	399.8	0.8	0.8	109.00	14.9	-5.6	16.8	15.2	1.56	10.794
500.0	499.5	499.5	499.5	1.0	1.0	123.60	14.9	-5.6	20.9	18.9	2.02	10.359 SF
600.0	598.8	598.8	598.8	1.3	1.2	132.59	14.9	-5.6	27.8	25.3	2.48	11.206
700.0	697.9	697.9	697.9	1.6	1.5	141.63	14.9	-5.6	38.1	35.1	2.94	12.955
800.0	796.4	796.4	796.4	2.0	1.7	148.81	14.9	-5.6	52.1	48.7	3.40	15.337
900.0	894.4	894.4	894.4	2.4	1.9	154.60	14.9	-5.6	69.9	66.0	3.86	18.111
1,000.0	992.1	992.1	992.1	2.8	2.1	160.42	14.9	-5.6	89.6	85.3	4.32	20.742
1,100.0	1,089.8	1,089.8	1,089.8	3.2	2.3	164.13	14.9	-5.6	109.9	105.1	4.79	22.963
1,200.0	1,187.5	1,187.5	1,187.5	3.7	2.6	166.68	14.9	-5.6	130.5	125.3	5.26	24.832
1,300.0	1,285.2	1,285.2	1,285.2	4.1	2.8	168.53	14.9	-5.6	151.3	145.6	5.73	26.413
1,400.0	1,382.9	1,382.9	1,382.9	4.6	3.0	169.94	14.9	-5.6	172.2	166.0	6.20	27.762
1,500.0	1,480.7	1,480.7	1,480.7	5.0	3.2	171.04	14.9	-5.6	193.2	186.5	6.68	28.924
1,600.0	1,578.4	1,575.5	1,575.4	5.5	3.4	171.67	15.7	-4.9	214.7	207.6	7.15	30.038
1,700.0	1,676.1	1,668.9	1,668.8	6.0	3.6	171.54	18.5	-2.1	237.9	230.3	7.62	31.228
1,800.0	1,773.8	1,761.5	1,761.1	6.4	3.8	170.85	23.6	2.7	262.8	254.7	8.09	32.469
1,900.0	1,871.5	1,853.0	1,852.1	6.9	4.1	169.77	30.7	9.4	289.4	280.8	8.58	33.739

CC - Min centre to center distance or convergent point, SF - min separation factor, ES - min ellipse separation

<b>Company:</b>	BAYSWATER EXPLORATION & PRODUCTION	<b>Local Co-ordinate Reference:</b>	Well Booth 29-23
<b>Project:</b>	SEC.23-T7N-R65W	<b>TVD Reference:</b>	WELL @ 4913.0ft (Original Well Elev)
<b>Reference Site:</b>	Booth 10 Pad Sec.23-T7N-R65W	<b>MD Reference:</b>	WELL @ 4913.0ft (Original Well Elev)
<b>Site Error:</b>	0.0ft	<b>North Reference:</b>	True
<b>Reference Well:</b>	Booth 29-23	<b>Survey Calculation Method:</b>	Minimum Curvature
<b>Well Error:</b>	0.0ft	<b>Output errors are at</b>	2.00 sigma
<b>Reference Wellbore</b>	Wellbore #1	<b>Database:</b>	Landmark
<b>Reference Design:</b>	Plan #1 (5-07-12)	<b>Offset TVD Reference:</b>	Offset Datum

Offset Design Booth 10 Pad Sec.23-T7N-R65W - Booth 28-23 - Wellbore #1 - Plan #1 (5-07-12)													Offset Site Error:	0.0 ft
Survey Program: 0-MWD													Offset Well Error:	0.0 ft
Measured Depth (ft)	Vertical Depth (ft)	Measured Depth (ft)	Vertical Depth (ft)	Reference	Offset	Semi Major Axis	Highside Toolface (°)	Offset Wellbore Centre +N/-S (ft)	Offset Wellbore Centre +E/-W (ft)	Between Centres (ft)	Between Ellipses (ft)	Minimum Separation (ft)	Separation Factor	Warning
2,000.0	1,969.2	1,943.3	1,941.5	7.3	4.3	168.43		39.7	18.1	317.7	308.7	9.07	35.018	
2,100.0	2,066.9	2,033.0	2,029.9	7.8	4.5	166.92		50.7	28.5	348.0	338.4	9.59	36.284	
2,200.0	2,164.7	2,127.5	2,122.9	8.3	4.8	165.42		63.1	40.3	379.1	369.0	10.13	37.417	
2,300.0	2,262.4	2,222.1	2,215.9	8.7	5.1	164.16		75.5	52.2	410.5	399.8	10.69	38.418	
2,400.0	2,360.1	2,316.7	2,309.0	9.2	5.4	163.07		87.9	64.0	442.0	430.8	11.25	39.292	
2,500.0	2,457.8	2,411.3	2,402.0	9.7	5.7	162.12		100.3	75.8	473.7	461.8	11.82	40.075	
2,600.0	2,555.5	2,505.9	2,495.0	10.1	6.0	161.30		112.7	87.6	505.4	493.0	12.40	40.774	
2,700.0	2,653.2	2,600.5	2,588.1	10.6	6.3	160.57		125.1	99.4	537.2	524.2	12.98	41.401	
2,800.0	2,751.0	2,695.1	2,681.1	11.1	6.7	159.92		137.5	111.2	569.1	555.6	13.56	41.966	
2,900.0	2,848.7	2,789.7	2,774.1	11.5	7.0	159.34		149.9	123.1	601.1	586.9	14.15	42.479	
3,000.0	2,946.4	2,884.3	2,867.1	12.0	7.3	158.82		162.3	134.9	633.1	618.3	14.74	42.946	
3,100.0	3,044.1	2,978.9	2,960.2	12.5	7.7	158.35		174.7	146.7	665.1	649.8	15.33	43.373	
3,200.0	3,141.8	3,073.5	3,053.2	12.9	8.0	157.92		187.1	158.5	697.2	681.3	15.93	43.764	
3,300.0	3,239.5	3,168.0	3,146.2	13.4	8.4	157.53		199.5	170.3	729.3	712.8	16.53	44.125	
3,400.0	3,337.2	3,262.6	3,239.2	13.9	8.7	157.17		211.9	182.2	761.4	744.3	17.13	44.457	
3,500.0	3,435.0	3,357.2	3,332.3	14.3	9.1	156.84		224.3	194.0	793.6	775.9	17.73	44.765	
3,600.0	3,532.7	3,451.8	3,425.3	14.8	9.5	156.54		236.7	205.8	825.8	807.5	18.33	45.051	
3,700.0	3,630.4	3,546.4	3,518.3	15.3	9.8	156.26		249.1	217.6	858.0	839.1	18.93	45.318	
3,800.0	3,728.1	3,641.0	3,611.4	15.7	10.2	156.00		261.5	229.4	890.2	870.7	19.54	45.566	
3,900.0	3,825.8	3,735.6	3,704.4	16.2	10.5	155.76		273.9	241.2	922.5	902.3	20.14	45.798	
4,000.0	3,923.5	3,835.5	3,802.6	16.7	10.9	155.52		286.9	253.7	954.7	933.9	20.76	45.994	
4,100.0	4,021.2	3,962.1	3,927.8	17.2	11.3	155.40		300.9	266.9	984.9	963.5	21.38	46.061	
4,200.0	4,119.0	4,091.2	4,056.1	17.6	11.6	155.52		310.9	276.5	1,012.0	990.0	21.96	46.090	
4,300.0	4,216.7	4,222.3	4,187.0	18.1	11.9	155.85		316.8	282.1	1,035.9	1,013.4	22.49	46.062	
4,400.0	4,314.4	4,349.8	4,314.4	18.6	12.1	156.38		318.4	283.7	1,056.6	1,033.6	22.97	45.991	
4,500.0	4,412.1	4,447.5	4,412.1	19.0	12.2	156.83		318.4	283.7	1,076.2	1,052.7	23.42	45.943	
4,600.0	4,509.8	4,545.2	4,509.8	19.5	12.4	157.27		318.4	283.7	1,095.8	1,071.9	23.88	45.885	
4,700.0	4,607.5	4,642.9	4,607.5	20.0	12.6	157.69		318.4	283.7	1,115.5	1,091.2	24.34	45.833	
4,800.0	4,705.3	4,740.6	4,705.3	20.4	12.7	158.10		318.4	283.7	1,135.2	1,110.5	24.80	45.784	
4,900.0	4,803.0	4,838.3	4,803.0	20.9	12.9	158.49		318.4	283.7	1,155.1	1,129.8	25.25	45.739	
5,000.0	4,900.7	4,936.1	4,900.7	21.4	13.1	158.87		318.4	283.7	1,174.9	1,149.2	25.71	45.697	
5,100.0	4,998.4	5,033.8	4,998.4	21.8	13.3	159.23		318.4	283.7	1,194.8	1,168.7	26.17	45.659	
5,200.0	5,096.1	5,131.5	5,096.1	22.3	13.4	159.60		318.4	283.7	1,214.8	1,188.1	26.63	45.617	
5,300.0	5,194.2	5,229.6	5,194.2	22.6	13.6	160.04		318.4	283.7	1,233.0	1,205.9	27.11	45.483	
5,400.0	5,292.9	5,328.3	5,292.9	22.9	13.8	160.39		318.4	283.7	1,248.0	1,220.5	27.56	45.289	
5,500.0	5,392.1	5,427.5	5,392.1	23.2	14.0	160.66		318.4	283.7	1,259.8	1,231.8	27.97	45.040	
5,600.0	5,491.7	5,527.1	5,491.7	23.4	14.2	160.85		318.4	283.7	1,268.3	1,239.9	28.35	44.737	
5,700.0	5,591.6	5,627.0	5,591.6	23.5	14.4	160.96		318.4	283.7	1,273.5	1,244.8	28.69	44.381	
5,800.0	5,691.5	5,726.9	5,691.5	23.6	14.5	161.01		318.4	283.7	1,275.4	1,246.4	29.01	43.969	
5,900.0	5,791.5	5,826.9	5,791.5	23.8	14.7	91.56		318.4	283.7	1,275.5	1,246.1	29.36	43.440	
6,000.0	5,891.5	5,926.9	5,891.5	23.9	14.9	91.56		318.4	283.7	1,275.5	1,245.7	29.73	42.905	
6,100.0	5,991.5	6,026.9	5,991.5	24.0	15.1	91.56		318.4	283.7	1,275.5	1,245.4	30.10	42.379	
6,200.0	6,091.5	6,126.9	6,091.5	24.1	15.3	91.56		318.4	283.7	1,275.5	1,245.0	30.47	41.864	
6,300.0	6,191.5	6,226.9	6,191.5	24.2	15.5	91.56		318.4	283.7	1,275.5	1,244.6	30.84	41.358	
6,400.0	6,291.5	6,326.9	6,291.5	24.3	15.7	91.56		318.4	283.7	1,275.5	1,244.2	31.21	40.861	
6,500.0	6,391.5	6,426.9	6,391.5	24.5	15.9	91.56		318.4	283.7	1,275.5	1,243.9	31.59	40.374	
6,600.0	6,491.5	6,526.9	6,491.5	24.6	16.1	91.56		318.4	283.7	1,275.5	1,243.5	31.97	39.896	
6,700.0	6,591.5	6,626.9	6,591.5	24.7	16.3	91.56		318.4	283.7	1,275.5	1,243.1	32.35	39.428	
6,800.0	6,691.5	6,726.9	6,691.5	24.9	16.5	91.56		318.4	283.7	1,275.5	1,242.7	32.73	38.968	
6,900.0	6,791.5	6,826.9	6,791.5	25.0	16.7	91.56		318.4	283.7	1,275.5	1,242.3	33.11	38.516	
7,000.0	6,891.5	6,926.9	6,891.5	25.1	16.9	91.56		318.4	283.7	1,275.5	1,242.0	33.50	38.073	

CC - Min centre to center distance or convergent point, SF - min separation factor, ES - min ellipse separation

<b>Company:</b>	BAYSWATER EXPLORATION & PRODUCTION	<b>Local Co-ordinate Reference:</b>	Well Booth 29-23
<b>Project:</b>	SEC.23-T7N-R65W	<b>TVD Reference:</b>	WELL @ 4913.0ft (Original Well Elev)
<b>Reference Site:</b>	Booth 10 Pad Sec.23-T7N-R65W	<b>MD Reference:</b>	WELL @ 4913.0ft (Original Well Elev)
<b>Site Error:</b>	0.0ft	<b>North Reference:</b>	True
<b>Reference Well:</b>	Booth 29-23	<b>Survey Calculation Method:</b>	Minimum Curvature
<b>Well Error:</b>	0.0ft	<b>Output errors are at</b>	2.00 sigma
<b>Reference Wellbore</b>	Wellbore #1	<b>Database:</b>	Landmark
<b>Reference Design:</b>	Plan #1 (5-07-12)	<b>Offset TVD Reference:</b>	Offset Datum

<b>Offset Design</b> Booth 10 Pad Sec.23-T7N-R65W - Booth 28-23 - Wellbore #1 - Plan #1 (5-07-12)													<b>Offset Site Error:</b>	0.0 ft
Survey Program: 0-MWD													<b>Offset Well Error:</b>	0.0 ft
Reference	Offset	Semi Major Axis		Distance									Warning	
Measured Depth (ft)	Vertical Depth (ft)	Measured Depth (ft)	Vertical Depth (ft)	Reference (ft)	Offset (ft)	Highside Toolface (°)	Offset Wellbore Centre +N/-S (ft)	Offset Wellbore Centre +E/-W (ft)	Between Centres (ft)	Between Ellipses (ft)	Minimum Separation (ft)	Separation Factor		
7,100.0	6,991.5	7,026.9	6,991.5	25.2	17.1	91.56	318.4	283.7	1,275.5	1,241.6	33.89	37.639		
7,200.0	7,091.5	7,126.9	7,091.5	25.4	17.3	91.56	318.4	283.7	1,275.5	1,241.2	34.27	37.213		
7,300.0	7,191.5	7,226.9	7,191.5	25.5	17.5	91.56	318.4	283.7	1,275.5	1,240.8	34.66	36.794		
7,400.0	7,291.5	7,326.9	7,291.5	25.7	17.7	91.56	318.4	283.7	1,275.5	1,240.4	35.06	36.384		
7,463.9	7,355.4	7,390.8	7,355.4	25.7	17.8	91.56	318.4	283.7	1,275.5	1,240.2	35.31	36.126		
7,498.5	7,390.0	7,420.4	7,385.0	25.8	17.9	91.56	318.4	283.7	1,275.5	1,240.0	35.43	35.998		

<b>Company:</b>	BAYSWATER EXPLORATION & PRODUCTION	<b>Local Co-ordinate Reference:</b>	Well Booth 29-23
<b>Project:</b>	SEC.23-T7N-R65W	<b>TVD Reference:</b>	WELL @ 4913.0ft (Original Well Elev)
<b>Reference Site:</b>	Booth 10 Pad Sec.23-T7N-R65W	<b>MD Reference:</b>	WELL @ 4913.0ft (Original Well Elev)
<b>Site Error:</b>	0.0ft	<b>North Reference:</b>	True
<b>Reference Well:</b>	Booth 29-23	<b>Survey Calculation Method:</b>	Minimum Curvature
<b>Well Error:</b>	0.0ft	<b>Output errors are at</b>	2.00 sigma
<b>Reference Wellbore</b>	Wellbore #1	<b>Database:</b>	Landmark
<b>Reference Design:</b>	Plan #1 (5-07-12)	<b>Offset TVD Reference:</b>	Offset Datum

Offset Design Booth 10 Pad Sec.23-T7N-R65W - Booth 30-23 - Wellbore #1 - Plan #1 (5-07-12)													Offset Site Error:	0.0 ft
Survey Program: 0-MWD													Offset Well Error:	0.0 ft
Measured Depth (ft)	Vertical Depth (ft)	Measured Depth (ft)	Vertical Depth (ft)	Reference (ft)	Offset (ft)	Semi Major Axis Highside Toolface (°)	Offset Wellbore Centre +N/-S (ft)	+E/-W (ft)	Between Centres (ft)	Between Ellipses (ft)	Minimum Separation (ft)	Separation Factor	Warning	
0.0	0.0	0.0	0.0	0.0	0.0	158.66	-14.9	5.8	16.0	16.0	0.00	N/A		
100.0	100.0	100.0	100.0	0.1	0.1	158.66	-14.9	5.8	16.0	15.8	0.22	71.347		
200.0	200.0	200.0	200.0	0.3	0.3	158.66	-14.9	5.8	16.0	15.4	0.67	23.782 CC		
300.0	300.0	300.0	300.0	0.5	0.5	-96.30	-15.5	4.2	16.2	15.1	1.10	14.767 ES		
400.0	399.8	400.0	399.9	0.8	0.8	-96.18	-17.3	-0.7	16.6	15.1	1.53	10.845		
500.0	499.5	500.2	499.7	1.0	1.0	-103.89	-20.0	-8.9	17.5	15.4	2.04	8.579		
600.0	598.8	600.6	599.3	1.3	1.3	-112.24	-22.0	-20.5	19.2	16.6	2.60	7.360		
700.0	697.9	700.9	698.5	1.6	1.6	-114.33	-22.9	-35.4	21.9	18.7	3.24	6.769		
800.0	796.4	801.1	797.1	2.0	2.0	-113.33	-22.8	-53.6	26.0	22.0	3.96	6.553		
900.0	894.4	901.3	894.9	2.4	2.4	-110.68	-21.7	-75.0	31.3	26.6	4.78	6.557		
1,000.0	992.1	1,001.3	991.8	2.8	2.9	-103.06	-19.5	-99.7	36.9	31.2	5.68	6.501 SF		
1,100.0	1,089.8	1,101.0	1,087.5	3.2	3.5	-92.88	-16.3	-127.5	42.8	36.2	6.59	6.504		
1,200.0	1,187.5	1,200.0	1,181.5	3.7	4.1	-81.51	-12.2	-158.2	50.3	42.9	7.41	6.794		
1,300.0	1,285.2	1,298.5	1,273.9	4.1	4.8	-70.30	-7.1	-191.8	60.5	52.4	8.08	7.489		
1,400.0	1,382.9	1,395.8	1,364.0	4.6	5.5	-60.33	-1.1	-228.0	74.1	65.5	8.62	8.601		
1,500.0	1,480.7	1,491.8	1,451.8	5.0	6.3	-52.02	5.8	-266.5	91.5	82.4	9.08	10.075		
1,600.0	1,578.4	1,587.0	1,537.3	5.5	7.2	-45.30	13.5	-307.4	112.5	102.9	9.51	11.825		
1,700.0	1,676.1	1,683.7	1,623.9	6.0	8.1	-40.33	21.6	-349.9	135.4	125.4	9.98	13.568		
1,800.0	1,773.8	1,780.5	1,710.5	6.4	9.0	-36.81	29.7	-392.4	159.0	148.5	10.49	15.150		
1,900.0	1,871.5	1,877.3	1,797.0	6.9	9.9	-34.20	37.9	-434.9	183.0	172.0	11.04	16.572		
2,000.0	1,969.2	1,974.1	1,883.6	7.3	10.9	-32.19	46.0	-477.4	207.3	195.7	11.62	17.844		
2,100.0	2,066.9	2,070.8	1,970.2	7.8	11.8	-30.61	54.1	-519.9	231.8	219.6	12.21	18.983		
2,200.0	2,164.7	2,167.6	2,056.7	8.3	12.7	-29.33	62.3	-562.4	256.5	243.7	12.82	20.007		
2,300.0	2,262.4	2,264.4	2,143.3	8.7	13.7	-28.27	70.4	-604.9	281.2	267.8	13.44	20.930		
2,400.0	2,360.1	2,361.1	2,229.8	9.2	14.6	-27.38	78.5	-647.3	306.0	292.0	14.06	21.765		
2,500.0	2,457.8	2,457.9	2,316.4	9.7	15.6	-26.63	86.6	-689.8	330.9	316.2	14.69	22.523		
2,600.0	2,555.5	2,554.7	2,403.0	10.1	16.5	-25.98	94.8	-732.3	355.8	340.5	15.33	23.214		
2,700.0	2,653.2	2,651.5	2,489.5	10.6	17.5	-25.42	102.9	-774.8	380.8	364.8	15.97	23.846		
2,800.0	2,751.0	2,748.2	2,576.1	11.1	18.4	-24.92	111.0	-817.3	405.8	389.2	16.61	24.426		
2,900.0	2,848.7	2,845.0	2,662.7	11.5	19.3	-24.49	119.1	-859.8	430.8	413.5	17.26	24.960		
3,000.0	2,946.4	2,941.8	2,749.2	12.0	20.3	-24.10	127.3	-902.3	455.8	437.9	17.91	25.453		
3,100.0	3,044.1	3,038.6	2,835.8	12.5	21.2	-23.75	135.4	-944.8	480.9	462.3	18.56	25.910		
3,200.0	3,141.8	3,135.3	2,922.4	12.9	22.2	-23.44	143.5	-987.3	505.9	486.7	19.21	26.333		
3,300.0	3,239.5	3,232.1	3,008.9	13.4	23.1	-23.15	151.6	-1,029.8	531.0	511.1	19.87	26.728		
3,400.0	3,337.2	3,328.9	3,095.5	13.9	24.1	-22.89	159.8	-1,072.3	556.1	535.6	20.52	27.096		
3,500.0	3,435.0	3,425.6	3,182.0	14.3	25.0	-22.66	167.9	-1,114.8	581.2	560.0	21.18	27.440		
3,600.0	3,532.7	3,522.4	3,268.6	14.8	26.0	-22.44	176.0	-1,157.3	606.3	584.5	21.84	27.762		
3,700.0	3,630.4	3,619.2	3,355.2	15.3	27.0	-22.24	184.1	-1,199.7	631.4	608.9	22.50	28.065		
3,800.0	3,728.1	3,716.0	3,441.7	15.7	27.9	-22.06	192.3	-1,242.2	656.5	633.4	23.16	28.349		
3,900.0	3,825.8	3,812.7	3,528.3	16.2	28.9	-21.89	200.4	-1,284.7	681.7	657.8	23.82	28.618		
4,000.0	3,923.5	3,909.5	3,614.9	16.7	29.8	-21.73	208.5	-1,327.2	706.8	682.3	24.48	28.871		
4,100.0	4,021.2	4,006.3	3,701.4	17.2	30.8	-21.58	216.7	-1,369.7	731.9	706.8	25.14	29.110		
4,200.0	4,119.0	4,103.1	3,788.0	17.6	31.7	-21.44	224.8	-1,412.2	757.1	731.3	25.81	29.336		
4,300.0	4,216.7	4,199.8	3,874.6	18.1	32.7	-21.31	232.9	-1,454.7	782.2	755.7	26.47	29.550		
4,400.0	4,314.4	4,296.6	3,961.1	18.6	33.6	-21.19	241.0	-1,497.2	807.4	780.2	27.13	29.754		
4,500.0	4,412.1	4,393.4	4,047.7	19.0	34.6	-21.08	249.2	-1,539.7	832.5	804.7	27.80	29.948		
4,600.0	4,509.8	4,490.1	4,134.3	19.5	35.5	-20.97	257.3	-1,582.2	857.7	829.2	28.46	30.132		
4,700.0	4,607.5	4,586.9	4,220.8	20.0	36.5	-20.87	265.4	-1,624.7	882.8	853.7	29.13	30.307		
4,800.0	4,705.3	4,683.7	4,307.4	20.4	37.4	-20.77	273.5	-1,667.2	908.0	878.2	29.79	30.474		
4,900.0	4,803.0	4,780.5	4,393.9	20.9	38.4	-20.68	281.7	-1,709.6	933.1	902.7	30.46	30.634		
5,000.0	4,900.7	4,877.2	4,480.5	21.4	39.3	-20.60	289.8	-1,752.1	958.3	927.2	31.13	30.787		

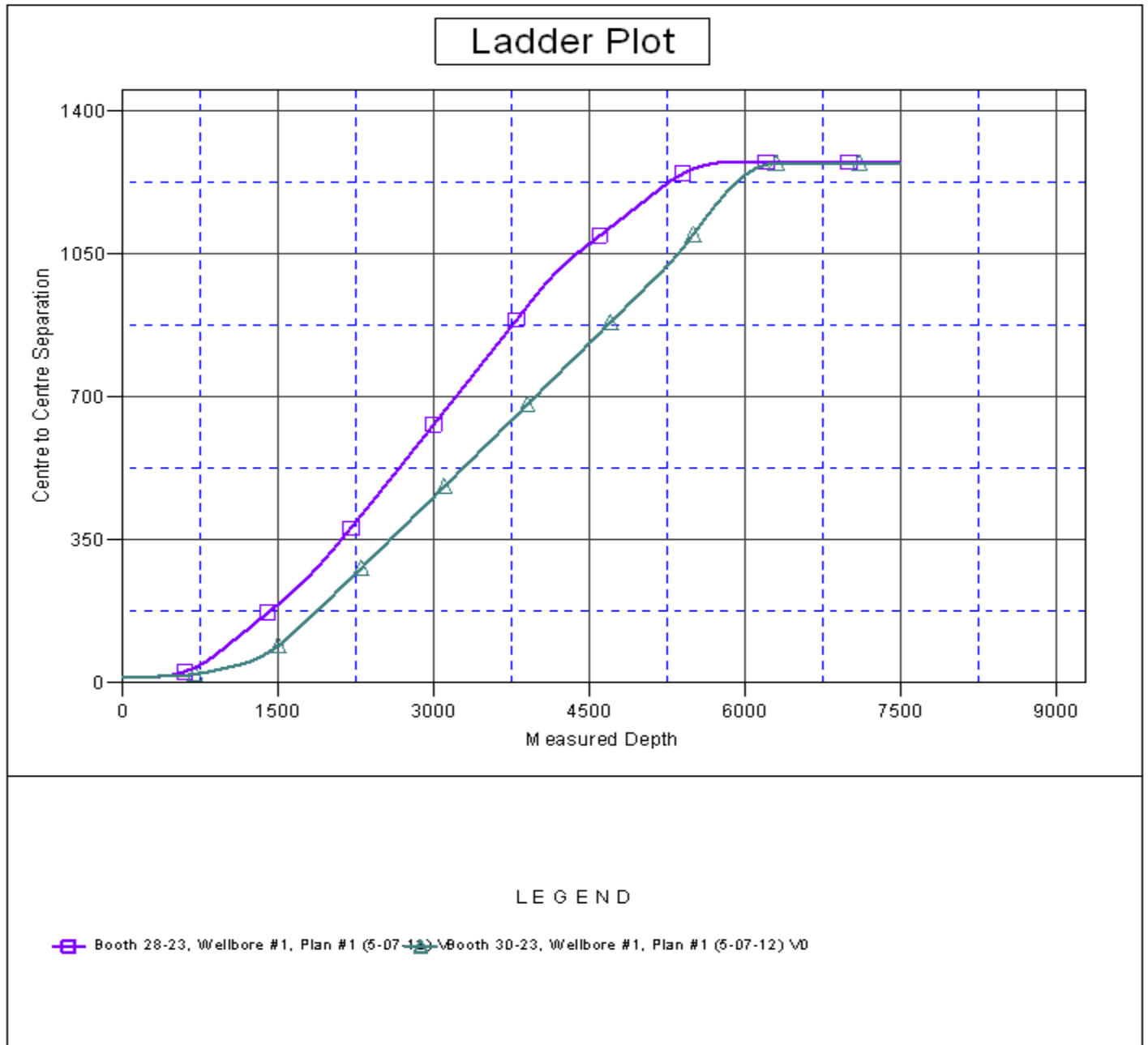
CC - Min centre to center distance or convergent point, SF - min separation factor, ES - min ellipse separation

<b>Company:</b>	BAYSWATER EXPLORATION & PRODUCTION	<b>Local Co-ordinate Reference:</b>	Well Booth 29-23
<b>Project:</b>	SEC.23-T7N-R65W	<b>TVD Reference:</b>	WELL @ 4913.0ft (Original Well Elev)
<b>Reference Site:</b>	Booth 10 Pad Sec.23-T7N-R65W	<b>MD Reference:</b>	WELL @ 4913.0ft (Original Well Elev)
<b>Site Error:</b>	0.0ft	<b>North Reference:</b>	True
<b>Reference Well:</b>	Booth 29-23	<b>Survey Calculation Method:</b>	Minimum Curvature
<b>Well Error:</b>	0.0ft	<b>Output errors are at</b>	2.00 sigma
<b>Reference Wellbore</b>	Wellbore #1	<b>Database:</b>	Landmark
<b>Reference Design:</b>	Plan #1 (5-07-12)	<b>Offset TVD Reference:</b>	Offset Datum

Offset Design Booth 10 Pad Sec.23-T7N-R65W - Booth 30-23 - Wellbore #1 - Plan #1 (5-07-12)													Offset Site Error:	0.0 ft
Survey Program: 0-MWD													Offset Well Error:	0.0 ft
Measured Depth (ft)	Vertical Depth (ft)	Measured Depth (ft)	Vertical Depth (ft)	Reference	Offset	Semi Major Axis	Highside Toolface (°)	Offset Wellbore Centre +N/-S (ft)	Offset Wellbore Centre +E/-W (ft)	Between Centres (ft)	Between Ellipses (ft)	Minimum Separation (ft)	Separation Factor	Warning
5,100.0	4,998.4	4,974.0	4,567.1	21.8	40.3	-20.52	-20.52	297.9	-1,794.6	983.5	951.7	31.79	30.933	
5,200.0	5,096.1	5,070.8	4,653.6	22.3	41.2	-20.45	-20.45	306.0	-1,837.1	1,008.6	976.2	32.46	31.076	
5,300.0	5,194.2	5,167.1	4,739.8	22.6	42.2	-20.53	-20.53	314.1	-1,879.4	1,035.6	1,002.6	32.99	31.389	
5,400.0	5,292.9	5,262.4	4,825.0	22.9	43.1	-20.58	-20.58	322.1	-1,921.3	1,065.6	1,032.1	33.46	31.847	
5,500.0	5,392.1	5,356.6	4,909.3	23.2	44.1	-20.60	-20.60	330.1	-1,962.6	1,098.8	1,064.9	33.87	32.444	
5,600.0	5,491.7	5,501.9	5,040.6	23.4	45.2	-20.45	-20.45	341.7	-2,023.6	1,133.1	1,098.8	34.31	33.025	
5,700.0	5,591.6	5,658.0	5,185.0	23.5	46.3	-20.26	-20.26	352.8	-2,081.8	1,165.6	1,131.0	34.68	33.614	
5,800.0	5,691.5	5,818.1	5,336.2	23.6	47.2	-20.05	-20.05	362.7	-2,133.4	1,196.1	1,161.2	34.96	34.216	
5,900.0	5,791.5	5,982.8	5,494.7	23.8	48.0	-89.12	-89.12	371.2	-2,177.7	1,223.1	1,187.7	35.39	34.559	
6,000.0	5,891.5	6,152.5	5,660.3	23.9	48.6	-88.83	-88.83	378.1	-2,214.0	1,244.6	1,208.7	35.85	34.718	
6,100.0	5,991.5	6,326.2	5,831.7	24.0	49.1	-88.61	-88.61	383.3	-2,241.0	1,260.2	1,223.9	36.29	34.724	
6,200.0	6,091.5	6,502.6	6,007.2	24.1	49.4	-88.49	-88.49	386.5	-2,258.0	1,269.9	1,233.2	36.71	34.588	
6,300.0	6,191.5	6,680.4	6,184.9	24.2	49.6	-88.44	-88.44	387.7	-2,264.3	1,273.5	1,236.4	37.11	34.320	
6,400.0	6,291.5	6,787.0	6,291.5	24.3	49.7	-88.44	-88.44	387.8	-2,264.4	1,273.5	1,236.1	37.41	34.042	
6,500.0	6,391.5	6,887.0	6,391.5	24.5	49.7	-88.44	-88.44	387.8	-2,264.4	1,273.5	1,235.8	37.71	33.774	
6,600.0	6,491.5	6,987.0	6,491.5	24.6	49.8	-88.44	-88.44	387.8	-2,264.4	1,273.5	1,235.5	38.01	33.506	
6,700.0	6,591.5	7,087.0	6,591.5	24.7	49.9	-88.44	-88.44	387.8	-2,264.4	1,273.5	1,235.2	38.31	33.241	
6,800.0	6,691.5	7,187.0	6,691.5	24.9	49.9	-88.44	-88.44	387.8	-2,264.4	1,273.5	1,234.9	38.62	32.978	
6,900.0	6,791.5	7,287.0	6,791.5	25.0	50.0	-88.44	-88.44	387.8	-2,264.4	1,273.5	1,234.6	38.93	32.716	
7,000.0	6,891.5	7,387.0	6,891.5	25.1	50.1	-88.44	-88.44	387.8	-2,264.4	1,273.5	1,234.3	39.24	32.456	
7,100.0	6,991.5	7,487.0	6,991.5	25.2	50.1	-88.44	-88.44	387.8	-2,264.4	1,273.5	1,234.0	39.55	32.198	
7,200.0	7,091.5	7,587.0	7,091.5	25.4	50.2	-88.44	-88.44	387.8	-2,264.4	1,273.5	1,233.6	39.87	31.943	
7,300.0	7,191.5	7,687.0	7,191.5	25.5	50.3	-88.44	-88.44	387.8	-2,264.4	1,273.5	1,233.3	40.19	31.689	
7,400.0	7,291.5	7,787.0	7,291.5	25.7	50.3	-88.44	-88.44	387.8	-2,264.4	1,273.5	1,233.0	40.51	31.438	
7,498.5	7,390.0	7,885.5	7,390.0	25.8	50.4	-88.44	-88.44	387.8	-2,264.4	1,273.5	1,232.7	40.83	31.193	

<b>Company:</b>	BAYSWATER EXPLORATION & PRODUCTION	<b>Local Co-ordinate Reference:</b>	Well Booth 29-23
<b>Project:</b>	SEC.23-T7N-R65W	<b>TVD Reference:</b>	WELL @ 4913.0ft (Original Well Elev)
<b>Reference Site:</b>	Booth 10 Pad Sec.23-T7N-R65W	<b>MD Reference:</b>	WELL @ 4913.0ft (Original Well Elev)
<b>Site Error:</b>	0.0ft	<b>North Reference:</b>	True
<b>Reference Well:</b>	Booth 29-23	<b>Survey Calculation Method:</b>	Minimum Curvature
<b>Well Error:</b>	0.0ft	<b>Output errors are at</b>	2.00 sigma
<b>Reference Wellbore</b>	Wellbore #1	<b>Database:</b>	Landmark
<b>Reference Design:</b>	Plan #1 (5-07-12)	<b>Offset TVD Reference:</b>	Offset Datum

Reference Depths are relative to WELL @ 4913.0ft (Original Well Elev) Coordinates are relative to: Booth 29-23  
 Offset Depths are relative to Offset Datum Coordinate System is US State Plane 1983, Colorado Northern Zone  
 Central Meridian is -105.500000 ° Grid Convergence at Surface is: 0.56°



<b>Company:</b>	BAYSWATER EXPLORATION & PRODUCTION	<b>Local Co-ordinate Reference:</b>	Well Booth 29-23
<b>Project:</b>	SEC.23-T7N-R65W	<b>TVD Reference:</b>	WELL @ 4913.0ft (Original Well Elev)
<b>Reference Site:</b>	Booth 10 Pad Sec.23-T7N-R65W	<b>MD Reference:</b>	WELL @ 4913.0ft (Original Well Elev)
<b>Site Error:</b>	0.0ft	<b>North Reference:</b>	True
<b>Reference Well:</b>	Booth 29-23	<b>Survey Calculation Method:</b>	Minimum Curvature
<b>Well Error:</b>	0.0ft	<b>Output errors are at</b>	2.00 sigma
<b>Reference Wellbore</b>	Wellbore #1	<b>Database:</b>	Landmark
<b>Reference Design:</b>	Plan #1 (5-07-12)	<b>Offset TVD Reference:</b>	Offset Datum

Reference Depths are relative to WELL @ 4913.0ft (Original Well Elev) Coordinates are relative to: Booth 29-23  
 Offset Depths are relative to Offset Datum  
 Central Meridian is -105.500000 °  
 Coordinate System is US State Plane 1983, Colorado Northern Zone  
 Grid Convergence at Surface is: 0.56°

