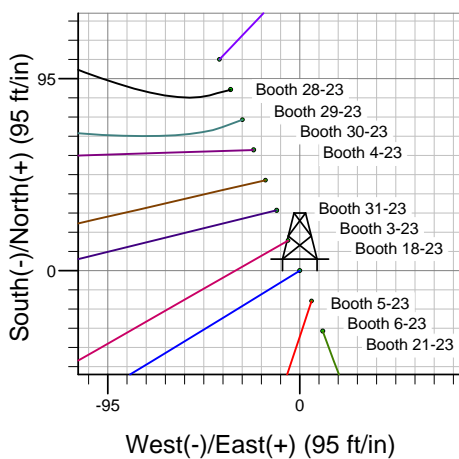
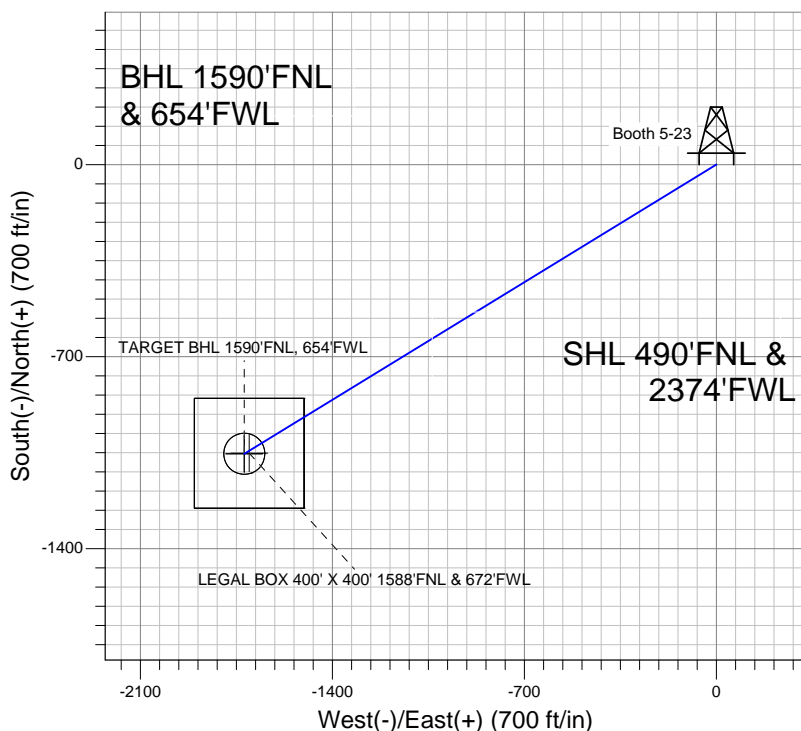
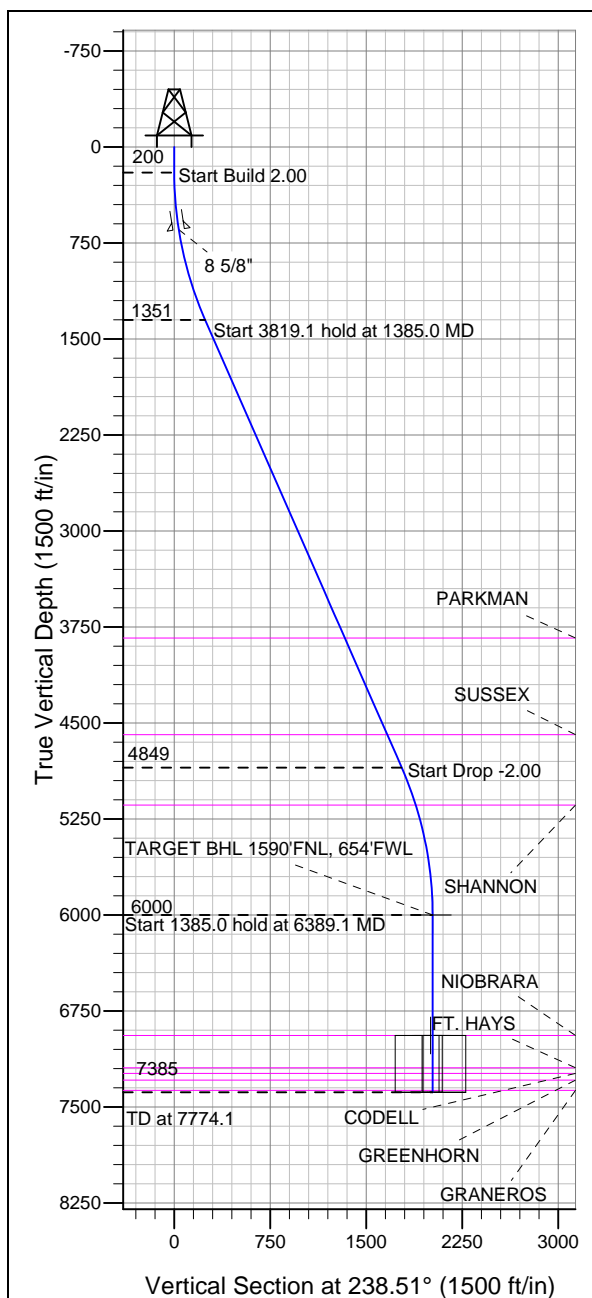


Well Name: Booth 5-23

Surface Location: Booth 10 Pad Sec.23-T7N-R65W
North American Datum 1983, US State Plane 1983 Colorado Northern Zone
Ground Elevation: 4896.0

+N/-S	+E/-W	Northing	Easting	Latitude	Longitude	Slot
0.0	0.0	1449847.21	3241380.95	40.564984	-104.631186	
		Original Well Elev	WELL @ 4912.0ft (Original Well Elev)			

BAYSWATER EXPLORATION & PRODUCTION



Booth 10 Pad Sec.23-T7N-R65W
Booth 5-23
Plan #1 (5-07-12)
14:35, May 11 2012



Azimuths to True North
Magnetic North: 8.69°
Magnetic Field
Strength: 53136.9snT
Dip Angle: 67.18°
Date: 5/7/2012
Model: IGRF2010

WELLBORE TARGET DETAILS (LAT/LONG)

Name	TVD	+N/-S	+E/-W	Latitude	Longitude	Shape
TARGET BHL 1590'FNL, 654'FWL	6000.0	-1054.3	-1721.0	40.562090	-104.637380	Point
LEGAL BOX 400' X 400' 1588'FNL & 672'FWL	6941.0	-1052.3	-1703.0	40.562095	-104.637315	Rectangle (Sides: L400.0 W400.0)
TARGET CIRCLE 1590'FNL & 654'FWL	6941.0	-1054.3	-1721.0	40.562090	-104.637380	Circle (Radius: 75.0)

SECTION DETAILS

Sec	MD	Inc	Azi	TVD	+N/-S	+E/-W	DLeg	TFace	VSec	Target
1	0.0	0.00	0.00	0.0	0.0	0.0	0.00	0.00	0.0	
2	200.0	0.00	0.00	200.0	0.0	0.0	0.00	0.00	0.0	
3	1385.0	23.70	238.51	1351.5	-126.2	-206.0	2.00	238.51	241.6	
4	5204.1	23.70	238.51	4848.5	-928.1	-1515.0	0.00	0.00	1776.7	
5	6389.1	0.00	0.00	6000.0	-1054.3	-1721.0	2.00	180.00	2018.3	TARGET BHL 1590'FNL, 654'FWL
6	7774.1	0.00	0.00	7385.0	-1054.3	-1721.0	0.00	0.00	2018.3	



BAYSWATER EXPLORATION & PRODUCTION

SEC.23-T7N-R65W

Booth 10 Pad Sec.23-T7N-R65W

Booth 5-23

Wellbore #1

Plan: Plan #1 (5-07-12)

Standard Planning Report

11 May, 2012

Database:	Landmark	Local Co-ordinate Reference:	Well Booth 5-23
Company:	BAYSWATER EXPLORATION & PRODUCTION	TVD Reference:	WELL @ 4912.0ft (Original Well Elev)
Project:	SEC.23-T7N-R65W	MD Reference:	WELL @ 4912.0ft (Original Well Elev)
Site:	Booth 10 Pad Sec.23-T7N-R65W	North Reference:	True
Well:	Booth 5-23	Survey Calculation Method:	Minimum Curvature
Wellbore:	Wellbore #1		
Design:	Plan #1 (5-07-12)		

Project	SEC.23-T7N-R65W, Weld County, CO		
Map System:	US State Plane 1983	System Datum:	Mean Sea Level
Geo Datum:	North American Datum 1983		Using Well Reference Point
Map Zone:	Colorado Northern Zone		Using geodetic scale factor

Site	Booth 10 Pad Sec.23-T7N-R65W		
Site Position:		Northing:	1,449,951.39ft
From:	Lat/Long	Easting:	3,241,340.20ft
Position Uncertainty:	0.0 ft	Slot Radius:	"
		Latitude:	40.565271
		Longitude:	-104.631329
		Grid Convergence:	0.56 °

Well	Booth 5-23		
Well Position	+N/-S	-104.6 ft	Northing:
	+E/-W	39.7 ft	Easting:
Position Uncertainty		0.0 ft	Wellhead Elevation:
			ft
			Latitude:
			40.564984
			Longitude:
			-104.631186
			Ground Level:
			4,896.0 ft

Wellbore	Wellbore #1				
Magnetics	Model Name	Sample Date	Declination (°)	Dip Angle (°)	Field Strength (nT)
	IGRF2010	5/7/2012	8.69	67.18	53,137

Design	Plan #1 (5-07-12)			
Audit Notes:				
Version:	Phase:	PROTOTYPE	Tie On Depth:	0.0
Vertical Section:	Depth From (TVD) (ft)	+N/-S (ft)	+E/-W (ft)	Direction (°)
	0.0	0.0	0.0	238.51

Plan Sections										
Measured Depth (ft)	Inclination (°)	Azimuth (°)	Vertical Depth (ft)	+N/-S (ft)	+E/-W (ft)	Dogleg Rate (°/100ft)	Build Rate (°/100ft)	Turn Rate (°/100ft)	TFO (°)	Target
0.0	0.00	0.00	0.0	0.0	0.0	0.00	0.00	0.00	0.00	
200.0	0.00	0.00	200.0	0.0	0.0	0.00	0.00	0.00	0.00	
1,385.0	23.70	238.51	1,351.5	-126.2	-206.0	2.00	2.00	0.00	238.51	
5,204.1	23.70	238.51	4,848.5	-928.1	-1,515.0	0.00	0.00	0.00	0.00	
6,389.1	0.00	0.00	6,000.0	-1,054.3	-1,721.0	2.00	-2.00	0.00	180.00	TARGET BHL 159C
7,774.1	0.00	0.00	7,385.0	-1,054.3	-1,721.0	0.00	0.00	0.00	0.00	

Database:	Landmark	Local Co-ordinate Reference:	Well Booth 5-23
Company:	BAYSWATER EXPLORATION & PRODUCTION	TVD Reference:	WELL @ 4912.0ft (Original Well Elev)
Project:	SEC.23-T7N-R65W	MD Reference:	WELL @ 4912.0ft (Original Well Elev)
Site:	Booth 10 Pad Sec.23-T7N-R65W	North Reference:	True
Well:	Booth 5-23	Survey Calculation Method:	Minimum Curvature
Wellbore:	Wellbore #1		
Design:	Plan #1 (5-07-12)		

Planned Survey

Measured Depth (ft)	Inclination (°)	Azimuth (°)	Vertical Depth (ft)	+N/-S (ft)	+E/-W (ft)	Vertical Section (ft)	Dogleg Rate (°/100ft)	Build Rate (°/100ft)	Turn Rate (°/100ft)
0.0	0.00	0.00	0.0	0.0	0.0	0.0	0.00	0.00	0.00
40.0	0.00	0.00	40.0	0.0	0.0	0.0	0.00	0.00	0.00
80.0	0.00	0.00	80.0	0.0	0.0	0.0	0.00	0.00	0.00
120.0	0.00	0.00	120.0	0.0	0.0	0.0	0.00	0.00	0.00
160.0	0.00	0.00	160.0	0.0	0.0	0.0	0.00	0.00	0.00
200.0	0.00	0.00	200.0	0.0	0.0	0.0	0.00	0.00	0.00
240.0	0.80	238.51	240.0	-0.1	-0.2	0.3	2.00	2.00	0.00
280.0	1.60	238.51	280.0	-0.6	-1.0	1.1	2.00	2.00	0.00
320.0	2.40	238.51	320.0	-1.3	-2.1	2.5	2.00	2.00	0.00
360.0	3.20	238.51	359.9	-2.3	-3.8	4.5	2.00	2.00	0.00
400.0	4.00	238.51	399.8	-3.6	-6.0	7.0	2.00	2.00	0.00
440.0	4.80	238.51	439.7	-5.2	-8.6	10.0	2.00	2.00	0.00
480.0	5.60	238.51	479.6	-7.1	-11.7	13.7	2.00	2.00	0.00
520.0	6.40	238.51	519.3	-9.3	-15.2	17.9	2.00	2.00	0.00
560.0	7.20	238.51	559.1	-11.8	-19.3	22.6	2.00	2.00	0.00
600.0	8.00	238.51	598.7	-14.6	-23.8	27.9	2.00	2.00	0.00
640.0	8.80	238.51	638.3	-17.6	-28.8	33.7	2.00	2.00	0.00
646.8	8.94	238.51	645.0	-18.2	-29.7	34.8	2.00	2.00	0.00
8 5/8"									
680.0	9.60	238.51	677.8	-21.0	-34.2	40.1	2.00	2.00	0.00
720.0	10.40	238.51	717.1	-24.6	-40.1	47.1	2.00	2.00	0.00
760.0	11.20	238.51	756.4	-28.5	-46.5	54.6	2.00	2.00	0.00
800.0	12.00	238.51	795.6	-32.7	-53.4	62.6	2.00	2.00	0.00
840.0	12.80	238.51	834.7	-37.2	-60.7	71.2	2.00	2.00	0.00
880.0	13.60	238.51	873.6	-42.0	-68.5	80.3	2.00	2.00	0.00
920.0	14.40	238.51	912.4	-47.0	-76.7	90.0	2.00	2.00	0.00
960.0	15.20	238.51	951.1	-52.4	-85.5	100.2	2.00	2.00	0.00
1,000.0	16.00	238.51	989.6	-58.0	-94.6	111.0	2.00	2.00	0.00
1,040.0	16.80	238.51	1,028.0	-63.9	-104.3	122.3	2.00	2.00	0.00
1,080.0	17.60	238.51	1,066.2	-70.0	-114.3	134.1	2.00	2.00	0.00
1,120.0	18.40	238.51	1,104.3	-76.5	-124.9	146.5	2.00	2.00	0.00
1,160.0	19.20	238.51	1,142.1	-83.2	-135.9	159.3	2.00	2.00	0.00
1,200.0	20.00	238.51	1,179.8	-90.2	-147.3	172.8	2.00	2.00	0.00
1,240.0	20.80	238.51	1,217.3	-97.5	-159.2	186.7	2.00	2.00	0.00
1,280.0	21.60	238.51	1,254.6	-105.1	-171.5	201.2	2.00	2.00	0.00
1,320.0	22.40	238.51	1,291.7	-112.9	-184.3	216.2	2.00	2.00	0.00
1,360.0	23.20	238.51	1,328.6	-121.0	-197.5	231.7	2.00	2.00	0.00
1,385.0	23.70	238.51	1,351.5	-126.2	-206.0	241.6	2.00	2.00	0.00
1,400.0	23.70	238.51	1,365.2	-129.4	-211.2	247.6	0.00	0.00	0.00
1,440.0	23.70	238.51	1,401.9	-137.8	-224.9	263.7	0.00	0.00	0.00
1,480.0	23.70	238.51	1,438.5	-146.2	-238.6	279.8	0.00	0.00	0.00
1,520.0	23.70	238.51	1,475.1	-154.6	-252.3	295.9	0.00	0.00	0.00
1,560.0	23.70	238.51	1,511.7	-163.0	-266.0	311.9	0.00	0.00	0.00
1,600.0	23.70	238.51	1,548.4	-171.3	-279.7	328.0	0.00	0.00	0.00
1,640.0	23.70	238.51	1,585.0	-179.7	-293.4	344.1	0.00	0.00	0.00
1,680.0	23.70	238.51	1,621.6	-188.1	-307.1	360.2	0.00	0.00	0.00
1,720.0	23.70	238.51	1,658.2	-196.5	-320.8	376.3	0.00	0.00	0.00
1,760.0	23.70	238.51	1,694.9	-204.9	-334.6	392.3	0.00	0.00	0.00
1,800.0	23.70	238.51	1,731.5	-213.3	-348.3	408.4	0.00	0.00	0.00
1,840.0	23.70	238.51	1,768.1	-221.7	-362.0	424.5	0.00	0.00	0.00
1,880.0	23.70	238.51	1,804.8	-230.1	-375.7	440.6	0.00	0.00	0.00
1,920.0	23.70	238.51	1,841.4	-238.5	-389.4	456.6	0.00	0.00	0.00
1,960.0	23.70	238.51	1,878.0	-246.9	-403.1	472.7	0.00	0.00	0.00

Database:	Landmark	Local Co-ordinate Reference:	Well Booth 5-23
Company:	BAYSWATER EXPLORATION & PRODUCTION	TVD Reference:	WELL @ 4912.0ft (Original Well Elev)
Project:	SEC.23-T7N-R65W	MD Reference:	WELL @ 4912.0ft (Original Well Elev)
Site:	Booth 10 Pad Sec.23-T7N-R65W	North Reference:	True
Well:	Booth 5-23	Survey Calculation Method:	Minimum Curvature
Wellbore:	Wellbore #1		
Design:	Plan #1 (5-07-12)		

Planned Survey									
Measured Depth (ft)	Inclination (°)	Azimuth (°)	Vertical Depth (ft)	+N/-S (ft)	+E/-W (ft)	Vertical Section (ft)	Dogleg Rate (°/100ft)	Build Rate (°/100ft)	Turn Rate (°/100ft)
2,000.0	23.70	238.51	1,914.6	-255.3	-416.8	488.8	0.00	0.00	0.00
2,040.0	23.70	238.51	1,951.3	-263.7	-430.5	504.9	0.00	0.00	0.00
2,080.0	23.70	238.51	1,987.9	-272.1	-444.2	521.0	0.00	0.00	0.00
2,120.0	23.70	238.51	2,024.5	-280.5	-457.9	537.0	0.00	0.00	0.00
2,160.0	23.70	238.51	2,061.1	-288.9	-471.7	553.1	0.00	0.00	0.00
2,200.0	23.70	238.51	2,097.8	-297.3	-485.4	569.2	0.00	0.00	0.00
2,240.0	23.70	238.51	2,134.4	-305.7	-499.1	585.3	0.00	0.00	0.00
2,280.0	23.70	238.51	2,171.0	-314.1	-512.8	601.3	0.00	0.00	0.00
2,320.0	23.70	238.51	2,207.6	-322.5	-526.5	617.4	0.00	0.00	0.00
2,360.0	23.70	238.51	2,244.3	-330.9	-540.2	633.5	0.00	0.00	0.00
2,400.0	23.70	238.51	2,280.9	-339.3	-553.9	649.6	0.00	0.00	0.00
2,440.0	23.70	238.51	2,317.5	-347.7	-567.6	665.7	0.00	0.00	0.00
2,480.0	23.70	238.51	2,354.1	-356.1	-581.3	681.7	0.00	0.00	0.00
2,520.0	23.70	238.51	2,390.8	-364.5	-595.0	697.8	0.00	0.00	0.00
2,560.0	23.70	238.51	2,427.4	-372.9	-608.7	713.9	0.00	0.00	0.00
2,600.0	23.70	238.51	2,464.0	-381.3	-622.5	730.0	0.00	0.00	0.00
2,640.0	23.70	238.51	2,500.7	-389.7	-636.2	746.0	0.00	0.00	0.00
2,680.0	23.70	238.51	2,537.3	-398.1	-649.9	762.1	0.00	0.00	0.00
2,720.0	23.70	238.51	2,573.9	-406.5	-663.6	778.2	0.00	0.00	0.00
2,760.0	23.70	238.51	2,610.5	-414.9	-677.3	794.3	0.00	0.00	0.00
2,800.0	23.70	238.51	2,647.2	-423.3	-691.0	810.4	0.00	0.00	0.00
2,840.0	23.70	238.51	2,683.8	-431.7	-704.7	826.4	0.00	0.00	0.00
2,880.0	23.70	238.51	2,720.4	-440.1	-718.4	842.5	0.00	0.00	0.00
2,920.0	23.70	238.51	2,757.0	-448.5	-732.1	858.6	0.00	0.00	0.00
2,960.0	23.70	238.51	2,793.7	-456.9	-745.8	874.7	0.00	0.00	0.00
3,000.0	23.70	238.51	2,830.3	-465.3	-759.6	890.7	0.00	0.00	0.00
3,040.0	23.70	238.51	2,866.9	-473.7	-773.3	906.8	0.00	0.00	0.00
3,080.0	23.70	238.51	2,903.5	-482.1	-787.0	922.9	0.00	0.00	0.00
3,120.0	23.70	238.51	2,940.2	-490.5	-800.7	939.0	0.00	0.00	0.00
3,160.0	23.70	238.51	2,976.8	-498.9	-814.4	955.1	0.00	0.00	0.00
3,200.0	23.70	238.51	3,013.4	-507.3	-828.1	971.1	0.00	0.00	0.00
3,240.0	23.70	238.51	3,050.1	-515.7	-841.8	987.2	0.00	0.00	0.00
3,280.0	23.70	238.51	3,086.7	-524.1	-855.5	1,003.3	0.00	0.00	0.00
3,320.0	23.70	238.51	3,123.3	-532.5	-869.2	1,019.4	0.00	0.00	0.00
3,360.0	23.70	238.51	3,159.9	-540.9	-882.9	1,035.4	0.00	0.00	0.00
3,400.0	23.70	238.51	3,196.6	-549.3	-896.7	1,051.5	0.00	0.00	0.00
3,440.0	23.70	238.51	3,233.2	-557.7	-910.4	1,067.6	0.00	0.00	0.00
3,480.0	23.70	238.51	3,269.8	-566.1	-924.1	1,083.7	0.00	0.00	0.00
3,520.0	23.70	238.51	3,306.4	-574.5	-937.8	1,099.8	0.00	0.00	0.00
3,560.0	23.70	238.51	3,343.1	-582.9	-951.5	1,115.8	0.00	0.00	0.00
3,600.0	23.70	238.51	3,379.7	-591.3	-965.2	1,131.9	0.00	0.00	0.00
3,640.0	23.70	238.51	3,416.3	-599.7	-978.9	1,148.0	0.00	0.00	0.00
3,680.0	23.70	238.51	3,452.9	-608.1	-992.6	1,164.1	0.00	0.00	0.00
3,720.0	23.70	238.51	3,489.6	-616.5	-1,006.3	1,180.1	0.00	0.00	0.00
3,760.0	23.70	238.51	3,526.2	-624.9	-1,020.0	1,196.2	0.00	0.00	0.00
3,800.0	23.70	238.51	3,562.8	-633.3	-1,033.8	1,212.3	0.00	0.00	0.00
3,840.0	23.70	238.51	3,599.5	-641.7	-1,047.5	1,228.4	0.00	0.00	0.00
3,880.0	23.70	238.51	3,636.1	-650.1	-1,061.2	1,244.5	0.00	0.00	0.00
3,920.0	23.70	238.51	3,672.7	-658.5	-1,074.9	1,260.5	0.00	0.00	0.00
3,960.0	23.70	238.51	3,709.3	-666.9	-1,088.6	1,276.6	0.00	0.00	0.00
4,000.0	23.70	238.51	3,746.0	-675.3	-1,102.3	1,292.7	0.00	0.00	0.00
4,040.0	23.70	238.51	3,782.6	-683.7	-1,116.0	1,308.8	0.00	0.00	0.00
4,080.0	23.70	238.51	3,819.2	-692.1	-1,129.7	1,324.8	0.00	0.00	0.00

Database:	Landmark	Local Co-ordinate Reference:	Well Booth 5-23
Company:	BAYSWATER EXPLORATION & PRODUCTION	TVD Reference:	WELL @ 4912.0ft (Original Well Elev)
Project:	SEC.23-T7N-R65W	MD Reference:	WELL @ 4912.0ft (Original Well Elev)
Site:	Booth 10 Pad Sec.23-T7N-R65W	North Reference:	True
Well:	Booth 5-23	Survey Calculation Method:	Minimum Curvature
Wellbore:	Wellbore #1		
Design:	Plan #1 (5-07-12)		

Planned Survey									
Measured Depth (ft)	Inclination (°)	Azimuth (°)	Vertical Depth (ft)	+N/-S (ft)	+E/-W (ft)	Vertical Section (ft)	Dogleg Rate (°/100ft)	Build Rate (°/100ft)	Turn Rate (°/100ft)
4,098.3	23.70	238.51	3,836.0	-695.9	-1,136.0	1,332.2	0.00	0.00	0.00
PARKMAN									
4,120.0	23.70	238.51	3,855.8	-700.4	-1,143.4	1,340.9	0.00	0.00	0.00
4,160.0	23.70	238.51	3,892.5	-708.8	-1,157.1	1,357.0	0.00	0.00	0.00
4,200.0	23.70	238.51	3,929.1	-717.2	-1,170.8	1,373.1	0.00	0.00	0.00
4,240.0	23.70	238.51	3,965.7	-725.6	-1,184.6	1,389.2	0.00	0.00	0.00
4,280.0	23.70	238.51	4,002.3	-734.0	-1,198.3	1,405.2	0.00	0.00	0.00
4,320.0	23.70	238.51	4,039.0	-742.4	-1,212.0	1,421.3	0.00	0.00	0.00
4,360.0	23.70	238.51	4,075.6	-750.8	-1,225.7	1,437.4	0.00	0.00	0.00
4,400.0	23.70	238.51	4,112.2	-759.2	-1,239.4	1,453.5	0.00	0.00	0.00
4,440.0	23.70	238.51	4,148.9	-767.6	-1,253.1	1,469.5	0.00	0.00	0.00
4,480.0	23.70	238.51	4,185.5	-776.0	-1,266.8	1,485.6	0.00	0.00	0.00
4,520.0	23.70	238.51	4,222.1	-784.4	-1,280.5	1,501.7	0.00	0.00	0.00
4,560.0	23.70	238.51	4,258.7	-792.8	-1,294.2	1,517.8	0.00	0.00	0.00
4,600.0	23.70	238.51	4,295.4	-801.2	-1,307.9	1,533.8	0.00	0.00	0.00
4,640.0	23.70	238.51	4,332.0	-809.6	-1,321.7	1,549.9	0.00	0.00	0.00
4,680.0	23.70	238.51	4,368.6	-818.0	-1,335.4	1,566.0	0.00	0.00	0.00
4,720.0	23.70	238.51	4,405.2	-826.4	-1,349.1	1,582.1	0.00	0.00	0.00
4,760.0	23.70	238.51	4,441.9	-834.8	-1,362.8	1,598.2	0.00	0.00	0.00
4,800.0	23.70	238.51	4,478.5	-843.2	-1,376.5	1,614.2	0.00	0.00	0.00
4,840.0	23.70	238.51	4,515.1	-851.6	-1,390.2	1,630.3	0.00	0.00	0.00
4,880.0	23.70	238.51	4,551.7	-860.0	-1,403.9	1,646.4	0.00	0.00	0.00
4,920.0	23.70	238.51	4,588.4	-868.4	-1,417.6	1,662.5	0.00	0.00	0.00
4,922.9	23.70	238.51	4,591.0	-869.0	-1,418.6	1,663.6	0.00	0.00	0.00
SUSSEX									
4,960.0	23.70	238.51	4,625.0	-876.8	-1,431.3	1,678.5	0.00	0.00	0.00
5,000.0	23.70	238.51	4,661.6	-885.2	-1,445.0	1,694.6	0.00	0.00	0.00
5,040.0	23.70	238.51	4,698.3	-893.6	-1,458.8	1,710.7	0.00	0.00	0.00
5,080.0	23.70	238.51	4,734.9	-902.0	-1,472.5	1,726.8	0.00	0.00	0.00
5,120.0	23.70	238.51	4,771.5	-910.4	-1,486.2	1,742.9	0.00	0.00	0.00
5,160.0	23.70	238.51	4,808.1	-918.8	-1,499.9	1,758.9	0.00	0.00	0.00
5,200.0	23.70	238.51	4,844.8	-927.2	-1,513.6	1,775.0	0.00	0.00	0.00
5,204.1	23.70	238.51	4,848.5	-928.1	-1,515.0	1,776.7	0.00	0.00	0.00
5,240.0	22.98	238.51	4,881.5	-935.5	-1,527.1	1,790.9	2.00	-2.00	0.00
5,280.0	22.18	238.51	4,918.4	-943.5	-1,540.2	1,806.2	2.00	-2.00	0.00
5,320.0	21.38	238.51	4,955.6	-951.3	-1,552.9	1,821.1	2.00	-2.00	0.00
5,360.0	20.58	238.51	4,992.9	-958.8	-1,565.1	1,835.4	2.00	-2.00	0.00
5,400.0	19.78	238.51	5,030.4	-966.0	-1,576.9	1,849.2	2.00	-2.00	0.00
5,440.0	18.98	238.51	5,068.2	-972.9	-1,588.2	1,862.5	2.00	-2.00	0.00
5,480.0	18.18	238.51	5,106.1	-979.6	-1,599.1	1,875.2	2.00	-2.00	0.00
5,516.7	17.45	238.51	5,141.0	-985.4	-1,608.6	1,886.5	2.00	-2.00	0.00
SHANNON									
5,520.0	17.38	238.51	5,144.2	-985.9	-1,609.5	1,887.4	2.00	-2.00	0.00
5,560.0	16.58	238.51	5,182.4	-992.0	-1,619.4	1,899.1	2.00	-2.00	0.00
5,600.0	15.78	238.51	5,220.9	-997.9	-1,628.9	1,910.3	2.00	-2.00	0.00
5,640.0	14.98	238.51	5,259.4	-1,003.4	-1,638.0	1,920.9	2.00	-2.00	0.00
5,680.0	14.18	238.51	5,298.1	-1,008.7	-1,646.6	1,931.0	2.00	-2.00	0.00
5,720.0	13.38	238.51	5,337.0	-1,013.6	-1,654.7	1,940.5	2.00	-2.00	0.00
5,760.0	12.58	238.51	5,376.0	-1,018.3	-1,662.4	1,949.5	2.00	-2.00	0.00
5,800.0	11.78	238.51	5,415.1	-1,022.7	-1,669.6	1,957.9	2.00	-2.00	0.00
5,840.0	10.98	238.51	5,454.3	-1,026.9	-1,676.3	1,965.8	2.00	-2.00	0.00
5,880.0	10.18	238.51	5,493.6	-1,030.7	-1,682.5	1,973.2	2.00	-2.00	0.00
5,920.0	9.38	238.51	5,533.0	-1,034.3	-1,688.3	1,979.9	2.00	-2.00	0.00

Database:	Landmark	Local Co-ordinate Reference:	Well Booth 5-23
Company:	BAYSWATER EXPLORATION & PRODUCTION	TVD Reference:	WELL @ 4912.0ft (Original Well Elev)
Project:	SEC.23-T7N-R65W	MD Reference:	WELL @ 4912.0ft (Original Well Elev)
Site:	Booth 10 Pad Sec.23-T7N-R65W	North Reference:	True
Well:	Booth 5-23	Survey Calculation Method:	Minimum Curvature
Wellbore:	Wellbore #1		
Design:	Plan #1 (5-07-12)		

Planned Survey									
Measured Depth (ft)	Inclination (°)	Azimuth (°)	Vertical Depth (ft)	+N/-S (ft)	+E/-W (ft)	Vertical Section (ft)	Dogleg Rate (°/100ft)	Build Rate (°/100ft)	Turn Rate (°/100ft)
5,960.0	8.58	238.51	5,572.5	-1,037.5	-1,693.7	1,986.2	2.00	-2.00	0.00
6,000.0	7.78	238.51	5,612.1	-1,040.5	-1,698.5	1,991.9	2.00	-2.00	0.00
6,040.0	6.98	238.51	5,651.8	-1,043.2	-1,702.9	1,997.0	2.00	-2.00	0.00
6,080.0	6.18	238.51	5,691.5	-1,045.6	-1,706.8	2,001.6	2.00	-2.00	0.00
6,120.0	5.38	238.51	5,731.3	-1,047.7	-1,710.3	2,005.6	2.00	-2.00	0.00
6,160.0	4.58	238.51	5,771.2	-1,049.5	-1,713.2	2,009.1	2.00	-2.00	0.00
6,200.0	3.78	238.51	5,811.0	-1,051.0	-1,715.7	2,012.0	2.00	-2.00	0.00
6,240.0	2.98	238.51	5,851.0	-1,052.2	-1,717.7	2,014.4	2.00	-2.00	0.00
6,280.0	2.18	238.51	5,890.9	-1,053.2	-1,719.2	2,016.2	2.00	-2.00	0.00
6,320.0	1.38	238.51	5,930.9	-1,053.8	-1,720.3	2,017.4	2.00	-2.00	0.00
6,360.0	0.58	238.51	5,970.9	-1,054.2	-1,720.9	2,018.1	2.00	-2.00	0.00
6,389.1	0.00	0.00	6,000.0	-1,054.3	-1,721.0	2,018.3	2.00	-2.00	417.64
TARGET BHL 1590'FNL, 654'FWL									
6,400.0	0.00	0.00	6,010.9	-1,054.3	-1,721.0	2,018.3	0.00	0.00	0.00
6,440.0	0.00	0.00	6,050.9	-1,054.3	-1,721.0	2,018.3	0.00	0.00	0.00
6,480.0	0.00	0.00	6,090.9	-1,054.3	-1,721.0	2,018.3	0.00	0.00	0.00
6,520.0	0.00	0.00	6,130.9	-1,054.3	-1,721.0	2,018.3	0.00	0.00	0.00
6,560.0	0.00	0.00	6,170.9	-1,054.3	-1,721.0	2,018.3	0.00	0.00	0.00
6,600.0	0.00	0.00	6,210.9	-1,054.3	-1,721.0	2,018.3	0.00	0.00	0.00
6,640.0	0.00	0.00	6,250.9	-1,054.3	-1,721.0	2,018.3	0.00	0.00	0.00
6,680.0	0.00	0.00	6,290.9	-1,054.3	-1,721.0	2,018.3	0.00	0.00	0.00
6,720.0	0.00	0.00	6,330.9	-1,054.3	-1,721.0	2,018.3	0.00	0.00	0.00
6,760.0	0.00	0.00	6,370.9	-1,054.3	-1,721.0	2,018.3	0.00	0.00	0.00
6,800.0	0.00	0.00	6,410.9	-1,054.3	-1,721.0	2,018.3	0.00	0.00	0.00
6,840.0	0.00	0.00	6,450.9	-1,054.3	-1,721.0	2,018.3	0.00	0.00	0.00
6,880.0	0.00	0.00	6,490.9	-1,054.3	-1,721.0	2,018.3	0.00	0.00	0.00
6,920.0	0.00	0.00	6,530.9	-1,054.3	-1,721.0	2,018.3	0.00	0.00	0.00
6,960.0	0.00	0.00	6,570.9	-1,054.3	-1,721.0	2,018.3	0.00	0.00	0.00
7,000.0	0.00	0.00	6,610.9	-1,054.3	-1,721.0	2,018.3	0.00	0.00	0.00
7,040.0	0.00	0.00	6,650.9	-1,054.3	-1,721.0	2,018.3	0.00	0.00	0.00
7,080.0	0.00	0.00	6,690.9	-1,054.3	-1,721.0	2,018.3	0.00	0.00	0.00
7,120.0	0.00	0.00	6,730.9	-1,054.3	-1,721.0	2,018.3	0.00	0.00	0.00
7,160.0	0.00	0.00	6,770.9	-1,054.3	-1,721.0	2,018.3	0.00	0.00	0.00
7,200.0	0.00	0.00	6,810.9	-1,054.3	-1,721.0	2,018.3	0.00	0.00	0.00
7,240.0	0.00	0.00	6,850.9	-1,054.3	-1,721.0	2,018.3	0.00	0.00	0.00
7,280.0	0.00	0.00	6,890.9	-1,054.3	-1,721.0	2,018.3	0.00	0.00	0.00
7,320.0	0.00	0.00	6,930.9	-1,054.3	-1,721.0	2,018.3	0.00	0.00	0.00
7,330.1	0.00	0.00	6,941.0	-1,054.3	-1,721.0	2,018.3	0.00	0.00	0.00
NIOBRARA - TARGET CIRCLE 1590'FNL & 654'FWL - LEGAL BOX 400' X 400' 1588'FNL & 672'FWL									
7,360.0	0.00	0.00	6,970.9	-1,054.3	-1,721.0	2,018.3	0.00	0.00	0.00
7,400.0	0.00	0.00	7,010.9	-1,054.3	-1,721.0	2,018.3	0.00	0.00	0.00
7,440.0	0.00	0.00	7,050.9	-1,054.3	-1,721.0	2,018.3	0.00	0.00	0.00
7,480.0	0.00	0.00	7,090.9	-1,054.3	-1,721.0	2,018.3	0.00	0.00	0.00
7,520.0	0.00	0.00	7,130.9	-1,054.3	-1,721.0	2,018.3	0.00	0.00	0.00
7,560.0	0.00	0.00	7,170.9	-1,054.3	-1,721.0	2,018.3	0.00	0.00	0.00
7,582.1	0.00	0.00	7,193.0	-1,054.3	-1,721.0	2,018.3	0.00	0.00	0.00
FT. HAYS									
7,600.0	0.00	0.00	7,210.9	-1,054.3	-1,721.0	2,018.3	0.00	0.00	0.00
7,626.1	0.00	0.00	7,237.0	-1,054.3	-1,721.0	2,018.3	0.00	0.00	0.00
CODELL									
7,640.0	0.00	0.00	7,250.9	-1,054.3	-1,721.0	2,018.3	0.00	0.00	0.00
7,678.1	0.00	0.00	7,289.0	-1,054.3	-1,721.0	2,018.3	0.00	0.00	0.00
GREENHORN									

Database:	Landmark	Local Co-ordinate Reference:	Well Booth 5-23
Company:	BAYSWATER EXPLORATION & PRODUCTION	TVD Reference:	WELL @ 4912.0ft (Original Well Elev)
Project:	SEC.23-T7N-R65W	MD Reference:	WELL @ 4912.0ft (Original Well Elev)
Site:	Booth 10 Pad Sec.23-T7N-R65W	North Reference:	True
Well:	Booth 5-23	Survey Calculation Method:	Minimum Curvature
Wellbore:	Wellbore #1		
Design:	Plan #1 (5-07-12)		

Planned Survey									
Measured Depth (ft)	Inclination (°)	Azimuth (°)	Vertical Depth (ft)	+N/-S (ft)	+E/-W (ft)	Vertical Section (ft)	Dogleg Rate (°/100ft)	Build Rate (°/100ft)	Turn Rate (°/100ft)
7,680.0	0.00	0.00	7,290.9	-1,054.3	-1,721.0	2,018.3	0.00	0.00	0.00
7,720.0	0.00	0.00	7,330.9	-1,054.3	-1,721.0	2,018.3	0.00	0.00	0.00
7,760.0	0.00	0.00	7,370.9	-1,054.3	-1,721.0	2,018.3	0.00	0.00	0.00
7,760.1	0.00	0.00	7,371.0	-1,054.3	-1,721.0	2,018.3	0.00	0.00	0.00
GRANEROS									
7,774.1	0.00	0.00	7,385.0	-1,054.3	-1,721.0	2,018.3	0.00	0.00	0.00

Targets									
Target Name	Dip Angle (°)	Dip Dir. (°)	TVD (ft)	+N/-S (ft)	+E/-W (ft)	Northing (ft)	Easting (ft)	Latitude	Longitude
- hit/miss target									
- Shape									
TARGET CIRCLE 1590'F	0.00	0.00	6,941.0	-1,054.3	-1,721.0	1,448,776.15	3,239,670.39	40.562090	-104.637380
- plan hits target center									
- Circle (radius 75.0)									
TARGET BHL 1590'F	0.00	0.00	6,000.0	-1,054.3	-1,721.0	1,448,776.15	3,239,670.39	40.562090	-104.637380
- plan hits target center									
- Point									
LEGAL BOX 400' X 400'	0.00	0.00	6,941.0	-1,052.3	-1,703.0	1,448,778.31	3,239,688.39	40.562095	-104.637315
- plan misses target center by 18.1ft at 7330.1ft MD (6941.0 TVD, -1054.3 N, -1721.0 E)									
- Rectangle (sides W400.0 H400.0 D444.0)									

Casing Points					
Measured Depth (ft)	Vertical Depth (ft)	Name	Casing Diameter (")	Hole Diameter (")	
646.8	645.0	8 5/8"	8-5/8	12-1/4	

Formations					
Measured Depth (ft)	Vertical Depth (ft)	Name	Lithology	Dip (°)	Dip Direction (°)
4,098.3	3,836.0	PARKMAN		0.00	
4,922.9	4,591.0	SUSSEX		0.00	
5,516.7	5,141.0	SHANNON		0.00	
7,330.1	6,941.0	NIOBRARA		0.00	
7,582.1	7,193.0	FT. HAYS		0.00	
7,626.1	7,237.0	CODELL		0.00	
7,678.1	7,289.0	GREENHORN		0.00	
7,760.1	7,371.0	GRANEROS		0.00	



BAYSWATER EXPLORATION & PRODUCTION

SEC.23-T7N-R65W

Booth 10 Pad Sec.23-T7N-R65W

Booth 5-23

Wellbore #1

Plan #1 (5-07-12)

Anticollision Report

11 May, 2012

Company:	BAYSWATER EXPLORATION & PRODUCTION	Local Co-ordinate Reference:	Well Booth 5-23
Project:	SEC.23-T7N-R65W	TVD Reference:	WELL @ 4912.0ft (Original Well Elev)
Reference Site:	Booth 10 Pad Sec.23-T7N-R65W	MD Reference:	WELL @ 4912.0ft (Original Well Elev)
Site Error:	0.0ft	North Reference:	True
Reference Well:	Booth 5-23	Survey Calculation Method:	Minimum Curvature
Well Error:	0.0ft	Output errors are at	2.00 sigma
Reference Wellbore	Wellbore #1	Database:	Landmark
Reference Design:	Plan #1 (5-07-12)	Offset TVD Reference:	Offset Datum

Reference	Plan #1 (5-07-12)		
Filter type:	NO GLOBAL FILTER: Using user defined selection & filtering criteria		
Interpolation Method:	MD Interval 100.0ft	Error Model:	ISCWSA
Depth Range:	Unlimited	Scan Method:	Closest Approach 3D
Results Limited by:	Maximum center-center distance of 10,000.0ft	Error Surface:	Elliptical Conic
Warning Levels Evaluated at:	2.00 Sigma		

Survey Tool Program	Date 5/7/2012			
From (ft)	To (ft)	Survey (Wellbore)	Tool Name	Description
0.0	7,774.1	Plan #1 (5-07-12) (Wellbore #1)	MWD	MWD - Standard

Summary						
Site Name	Reference Measured Depth (ft)	Offset Measured Depth (ft)	Distance Between Centres (ft)	Distance Between Ellipses (ft)	Separation Factor	Warning
Offset Well - Wellbore - Design						
Booth 10 Pad Sec.23-T7N-R65W						
Booth 18-23 - Wellbore #1 - Plan #1 (5-07-12)	200.0	200.0	16.0	15.4	23.782	CC
Booth 18-23 - Wellbore #1 - Plan #1 (5-07-12)	300.0	300.0	16.4	15.3	14.837	ES
Booth 18-23 - Wellbore #1 - Plan #1 (5-07-12)	500.0	500.0	23.1	21.1	11.590	SF
Booth 6-23 - Wellbore #1 - Plan #1 (5-07-12)	327.3	327.2	15.8	14.6	12.864	CC, ES
Booth 6-23 - Wellbore #1 - Plan #1 (5-07-12)	500.0	499.5	20.4	18.3	10.108	SF

Booth 10 Pad Sec.23-T7N-R65W - Booth 18-23 - Wellbore #1 - Plan #1 (5-07-12)													Offset Site Error:	0.0 ft
Survey Program: 0-MWD													Offset Well Error:	0.0 ft
Reference		Offset		Semi Major Axis			Distance							
Measured Depth (ft)	Vertical Depth (ft)	Measured Depth (ft)	Vertical Depth (ft)	Reference (ft)	Offset (ft)	Highside Toolface (°)	Offset Wellbore Centre +N/-S (ft)	+E/-W (ft)	Between Centres (ft)	Between Ellipses (ft)	Minimum Separation (ft)	Separation Factor	Warning	
0.0	0.0	0.0	0.0	0.0	0.0	-21.34	14.9	-5.8	16.0	16.0	0.00	N/A		
100.0	100.0	100.0	100.0	0.1	0.1	-21.34	14.9	-5.8	16.0	15.8	0.22	71.347		
200.0	200.0	200.0	200.0	0.3	0.3	-21.34	14.9	-5.8	16.0	15.4	0.67	23.782	CC	
300.0	300.0	300.0	300.0	0.5	0.6	106.15	14.9	-5.8	16.4	15.3	1.11	14.837	ES	
400.0	399.8	399.8	399.8	0.8	0.8	121.79	14.9	-5.8	18.6	17.0	1.55	11.991		
500.0	499.5	500.0	500.0	1.0	1.0	136.59	14.1	-7.4	23.1	21.1	1.99	11.590	SF	
600.0	598.7	600.5	600.3	1.3	1.2	145.97	11.5	-11.9	28.6	26.2	2.43	11.790		
700.0	697.5	701.2	700.6	1.6	1.4	152.03	7.1	-19.6	34.7	31.9	2.88	12.044		
800.0	795.6	802.1	800.8	2.0	1.7	156.09	1.0	-30.3	41.1	37.8	3.36	12.248		
900.0	893.1	903.3	900.7	2.5	2.0	158.91	-6.9	-44.1	47.7	43.8	3.85	12.376		
1,000.0	989.6	1,004.8	1,000.3	3.0	2.4	160.92	-16.6	-61.0	54.3	49.9	4.37	12.427		
1,100.0	1,085.3	1,106.5	1,099.3	3.6	2.8	162.39	-28.1	-81.1	61.0	56.1	4.91	12.412		
1,200.0	1,179.8	1,206.5	1,196.2	4.2	3.3	163.75	-40.4	-102.7	68.8	63.4	5.47	12.578		
1,300.0	1,273.2	1,305.8	1,292.4	5.0	3.8	165.46	-52.8	-124.3	80.0	74.0	6.03	13.278		
1,400.0	1,365.2	1,404.7	1,388.1	5.7	4.3	167.21	-65.0	-145.7	94.6	88.0	6.58	14.375		
1,500.0	1,456.8	1,503.4	1,483.7	6.6	4.8	168.67	-77.3	-167.1	110.5	103.3	7.17	15.406		
1,600.0	1,548.4	1,602.1	1,579.3	7.4	5.3	169.77	-89.5	-188.5	126.4	118.6	7.77	16.266		
1,700.0	1,639.9	1,700.8	1,674.8	8.2	5.9	170.61	-101.7	-209.9	142.3	134.0	8.38	16.993		
1,800.0	1,731.5	1,799.5	1,770.4	9.1	6.4	171.29	-114.0	-231.3	158.3	149.3	8.99	17.613		
1,900.0	1,823.1	1,898.2	1,866.0	9.9	6.9	171.84	-126.2	-252.7	174.3	164.7	9.60	18.148		
2,000.0	1,914.6	1,996.9	1,961.5	10.7	7.4	172.30	-138.4	-274.1	190.3	180.1	10.23	18.614		

CC - Min centre to center distance or convergent point, SF - min separation factor, ES - min ellipse separation

Company:	BAYSWATER EXPLORATION & PRODUCTION	Local Co-ordinate Reference:	Well Booth 5-23
Project:	SEC.23-T7N-R65W	TVD Reference:	WELL @ 4912.0ft (Original Well Elev)
Reference Site:	Booth 10 Pad Sec.23-T7N-R65W	MD Reference:	WELL @ 4912.0ft (Original Well Elev)
Site Error:	0.0ft	North Reference:	True
Reference Well:	Booth 5-23	Survey Calculation Method:	Minimum Curvature
Well Error:	0.0ft	Output errors are at	2.00 sigma
Reference Wellbore	Wellbore #1	Database:	Landmark
Reference Design:	Plan #1 (5-07-12)	Offset TVD Reference:	Offset Datum

Offset Design Booth 10 Pad Sec.23-T7N-R65W - Booth 18-23 - Wellbore #1 - Plan #1 (5-07-12)													Offset Site Error:	0.0 ft
Survey Program: 0-MWD													Offset Well Error:	0.0 ft
Reference	Offset	Semi Major Axis		Distance		Warning								
Measured Depth (ft)	Vertical Depth (ft)	Measured Depth (ft)	Vertical Depth (ft)	Reference (ft)	Offset (ft)	Highside Toolface (°)	Offset Wellbore Centre +N/-S (ft)	+E/-W (ft)	Between Centres (ft)	Between Ellipses (ft)	Minimum Separation (ft)	Separation Factor		
2,100.0	2,006.2	2,095.6	2,057.1	11.6	8.0	172.69	-150.7	-295.5	206.3	195.5	10.85	19.021		
2,200.0	2,097.8	2,194.3	2,152.7	12.4	8.5	173.03	-162.9	-316.9	222.4	210.9	11.47	19.381		
2,300.0	2,189.3	2,293.0	2,248.3	13.3	9.0	173.31	-175.1	-338.3	238.4	226.3	12.10	19.701		
2,400.0	2,280.9	2,391.7	2,343.8	14.1	9.5	173.57	-187.4	-359.8	254.5	241.7	12.73	19.987		
2,500.0	2,372.5	2,490.4	2,439.4	15.0	10.1	173.79	-199.6	-381.2	270.5	257.1	13.36	20.244		
2,600.0	2,464.0	2,589.1	2,535.0	15.8	10.6	173.98	-211.8	-402.6	286.5	272.5	13.99	20.476		
2,700.0	2,555.6	2,687.8	2,630.5	16.7	11.1	174.16	-224.1	-424.0	302.6	288.0	14.63	20.687		
2,800.0	2,647.2	2,786.5	2,726.1	17.5	11.7	174.32	-236.3	-445.4	318.6	303.4	15.26	20.879		
2,900.0	2,738.7	2,885.2	2,821.7	18.4	12.2	174.46	-248.5	-466.8	334.7	318.8	15.90	21.055		
3,000.0	2,830.3	2,983.9	2,917.3	19.2	12.7	174.59	-260.8	-488.2	350.8	334.2	16.53	21.216		
3,100.0	2,921.9	3,082.6	3,012.8	20.1	13.3	174.71	-273.0	-509.6	366.8	349.7	17.17	21.365		
3,200.0	3,013.4	3,181.3	3,108.4	20.9	13.8	174.82	-285.3	-531.0	382.9	365.1	17.81	21.502		
3,300.0	3,105.0	3,280.0	3,204.0	21.8	14.3	174.92	-297.5	-552.4	398.9	380.5	18.44	21.630		
3,400.0	3,196.6	3,378.7	3,299.5	22.6	14.9	175.01	-309.7	-573.8	415.0	395.9	19.08	21.748		
3,500.0	3,288.1	3,477.4	3,395.1	23.5	15.4	175.10	-322.0	-595.2	431.1	411.3	19.72	21.858		
3,600.0	3,379.7	3,576.1	3,490.7	24.3	15.9	175.18	-334.2	-616.6	447.1	426.8	20.36	21.961		
3,700.0	3,471.3	3,674.8	3,586.2	25.2	16.5	175.25	-346.4	-638.0	463.2	442.2	21.00	22.057		
3,800.0	3,562.8	3,773.5	3,681.8	26.0	17.0	175.32	-358.7	-659.4	479.3	457.6	21.64	22.147		
3,900.0	3,654.4	3,872.2	3,777.4	26.9	17.5	175.38	-370.9	-680.8	495.3	473.1	22.28	22.232		
4,000.0	3,746.0	3,970.9	3,873.0	27.7	18.1	175.44	-383.1	-702.2	511.4	488.5	22.92	22.312		
4,100.0	3,837.5	4,069.6	3,968.5	28.6	18.6	175.50	-395.4	-723.6	527.5	503.9	23.56	22.387		
4,200.0	3,929.1	4,168.3	4,064.1	29.4	19.1	175.55	-407.6	-745.0	543.5	519.3	24.20	22.458		
4,300.0	4,020.7	4,267.0	4,159.7	30.3	19.7	175.60	-419.8	-766.4	559.6	534.8	24.84	22.525		
4,400.0	4,112.2	4,365.7	4,255.2	31.1	20.2	175.65	-432.1	-787.8	575.7	550.2	25.48	22.589		
4,500.0	4,203.8	4,464.4	4,350.8	32.0	20.7	175.69	-444.3	-809.2	591.7	565.6	26.13	22.649		
4,600.0	4,295.4	4,563.1	4,446.4	32.8	21.3	175.74	-456.5	-830.6	607.8	581.0	26.77	22.706		
4,700.0	4,386.9	4,661.8	4,542.0	33.7	21.8	175.78	-468.8	-852.0	623.9	596.5	27.41	22.761		
4,800.0	4,478.5	4,760.5	4,637.5	34.6	22.4	175.82	-481.0	-873.5	640.0	611.9	28.05	22.813		
4,900.0	4,570.1	4,859.2	4,733.1	35.4	22.9	175.85	-493.3	-894.9	656.0	627.3	28.69	22.862		
5,000.0	4,661.6	4,957.9	4,828.7	36.3	23.4	175.89	-505.5	-916.3	672.1	642.8	29.34	22.909		
5,100.0	4,753.2	5,056.6	4,924.2	37.1	24.0	175.92	-517.7	-937.7	688.2	658.2	29.98	22.954		
5,200.0	4,844.8	5,148.1	5,012.9	38.0	24.4	175.95	-529.0	-957.4	704.4	673.8	30.59	23.024		
5,300.0	4,937.0	5,227.1	5,089.8	38.7	24.8	176.01	-537.9	-972.9	721.3	690.1	31.21	23.113		
5,400.0	5,030.4	5,300.0	5,161.3	39.3	25.0	176.06	-545.1	-985.6	737.4	705.7	31.73	23.244		
5,500.0	5,125.1	5,384.3	5,244.3	39.8	25.2	176.11	-552.4	-998.3	752.8	720.6	32.21	23.372		
5,600.0	5,220.9	5,462.6	5,321.7	40.3	25.5	176.17	-558.0	-1,008.2	767.4	734.8	32.62	23.527		
5,700.0	5,317.5	5,540.6	5,399.2	40.7	25.6	176.22	-562.6	-1,016.2	781.3	748.3	32.97	23.699		
5,800.0	5,415.1	5,618.4	5,476.7	41.1	25.8	176.27	-566.2	-1,022.4	794.4	761.1	33.25	23.888		
5,900.0	5,513.3	5,700.0	5,558.1	41.4	25.9	176.32	-568.7	-1,026.9	806.7	773.2	33.49	24.092		
6,000.0	5,612.1	5,773.5	5,631.6	41.6	26.0	176.37	-570.1	-1,029.3	818.3	784.6	33.64	24.324		
6,100.0	5,711.4	5,853.4	5,711.4	41.9	26.1	176.42	-570.5	-1,030.0	829.0	795.3	33.75	24.563		
6,200.0	5,811.0	5,953.0	5,811.0	42.0	26.2	176.46	-570.5	-1,030.0	837.3	803.5	33.84	24.744		
6,300.0	5,910.9	6,052.9	5,910.9	42.1	26.3	176.49	-570.5	-1,030.0	842.2	808.3	33.88	24.860		
6,400.0	6,010.9	6,152.9	6,010.9	42.2	26.4	55.01	-570.5	-1,030.0	843.6	809.6	33.91	24.878		
6,500.0	6,110.9	6,252.9	6,110.9	42.3	26.5	55.01	-570.5	-1,030.0	843.6	809.4	34.20	24.666		
6,600.0	6,210.9	6,352.9	6,210.9	42.3	26.6	55.01	-570.5	-1,030.0	843.6	809.1	34.49	24.455		
6,700.0	6,310.9	6,452.9	6,310.9	42.4	26.7	55.01	-570.5	-1,030.0	843.6	808.8	34.79	24.245		
6,800.0	6,410.9	6,552.9	6,410.9	42.5	26.8	55.01	-570.5	-1,030.0	843.6	808.5	35.09	24.037		
6,900.0	6,510.9	6,652.9	6,510.9	42.5	26.9	55.01	-570.5	-1,030.0	843.6	808.2	35.40	23.831		
7,000.0	6,610.9	6,752.9	6,610.9	42.6	27.0	55.01	-570.5	-1,030.0	843.6	807.8	35.71	23.626		
7,100.0	6,710.9	6,852.9	6,710.9	42.7	27.1	55.01	-570.5	-1,030.0	843.6	807.5	36.02	23.422		

CC - Min centre to center distance or convergent point, SF - min separation factor, ES - min ellipse separation

Company:	BAYSWATER EXPLORATION & PRODUCTION	Local Co-ordinate Reference:	Well Booth 5-23
Project:	SEC.23-T7N-R65W	TVD Reference:	WELL @ 4912.0ft (Original Well Elev)
Reference Site:	Booth 10 Pad Sec.23-T7N-R65W	MD Reference:	WELL @ 4912.0ft (Original Well Elev)
Site Error:	0.0ft	North Reference:	True
Reference Well:	Booth 5-23	Survey Calculation Method:	Minimum Curvature
Well Error:	0.0ft	Output errors are at	2.00 sigma
Reference Wellbore	Wellbore #1	Database:	Landmark
Reference Design:	Plan #1 (5-07-12)	Offset TVD Reference:	Offset Datum

Offset Design Booth 10 Pad Sec.23-T7N-R65W - Booth 18-23 - Wellbore #1 - Plan #1 (5-07-12)												Offset Site Error:	0.0 ft
Survey Program: 0-MWD												Offset Well Error:	0.0 ft
Reference		Offset		Semi Major Axis		Highside Toolface (°)	Offset Wellbore Centre		Distance		Minimum Separation (ft)	Separation Factor	Warning
Measured Depth (ft)	Vertical Depth (ft)	Measured Depth (ft)	Vertical Depth (ft)	Reference (ft)	Offset (ft)		+N/-S (ft)	+E/-W (ft)	Between Centres (ft)	Between Ellipses (ft)			
7,200.0	6,810.9	6,952.9	6,810.9	42.7	27.2	55.01	-570.5	-1,030.0	843.6	807.2	36.33	23.220	
7,300.0	6,910.9	7,052.9	6,910.9	42.8	27.3	55.01	-570.5	-1,030.0	843.6	806.9	36.64	23.020	
7,400.0	7,010.9	7,152.9	7,010.9	42.9	27.4	55.01	-570.5	-1,030.0	843.6	806.6	36.96	22.821	
7,500.0	7,110.9	7,252.9	7,110.9	42.9	27.5	55.01	-570.5	-1,030.0	843.6	806.3	37.28	22.625	
7,600.0	7,210.9	7,352.9	7,210.9	43.0	27.7	55.01	-570.5	-1,030.0	843.6	805.9	37.61	22.430	
7,700.0	7,310.9	7,452.9	7,310.9	43.1	27.8	55.01	-570.5	-1,030.0	843.6	805.6	37.93	22.237	
7,774.1	7,385.0	7,527.0	7,385.0	43.1	27.9	55.01	-570.5	-1,030.0	843.6	805.4	38.18	22.095	

Company:	BAYSWATER EXPLORATION & PRODUCTION	Local Co-ordinate Reference:	Well Booth 5-23
Project:	SEC.23-T7N-R65W	TVD Reference:	WELL @ 4912.0ft (Original Well Elev)
Reference Site:	Booth 10 Pad Sec.23-T7N-R65W	MD Reference:	WELL @ 4912.0ft (Original Well Elev)
Site Error:	0.0ft	North Reference:	True
Reference Well:	Booth 5-23	Survey Calculation Method:	Minimum Curvature
Well Error:	0.0ft	Output errors are at	2.00 sigma
Reference Wellbore	Wellbore #1	Database:	Landmark
Reference Design:	Plan #1 (5-07-12)	Offset TVD Reference:	Offset Datum

Offset Design Booth 10 Pad Sec.23-T7N-R65W - Booth 6-23 - Wellbore #1 - Plan #1 (5-07-12)													Offset Site Error:	0.0 ft
Survey Program: 0-MWD													Offset Well Error:	0.0 ft
Measured Depth (ft)	Vertical Depth (ft)	Measured Depth (ft)	Vertical Depth (ft)	Reference (ft)	Offset (ft)	Semi Major Axis Highside Toolface (°)	Offset Wellbore Centre +N/-S (ft)	+E/-W (ft)	Between Centres (ft)	Between Ellipses (ft)	Minimum Separation (ft)	Separation Factor	Warning	
0.0	0.0	0.0	0.0	0.0	0.0	158.66	-14.9	5.8	16.0	16.0	0.00	N/A		
100.0	100.0	100.0	100.0	0.1	0.1	158.66	-14.9	5.8	16.0	15.8	0.22	71.347		
200.0	200.0	200.0	200.0	0.3	0.3	158.66	-14.9	5.8	16.0	15.4	0.67	23.782		
300.0	300.0	300.0	300.0	0.5	0.6	-86.08	-14.9	5.8	15.8	14.7	1.11	14.293		
327.3	327.2	327.2	327.2	0.6	0.6	-90.00	-14.9	5.8	15.8	14.6	1.23	12.864 CC, ES		
400.0	399.8	399.8	399.8	0.8	0.8	-104.70	-14.9	5.8	16.3	14.8	1.55	10.548		
500.0	499.5	499.5	499.5	1.0	1.0	-129.03	-14.9	5.8	20.4	18.3	2.01	10.108 SF		
600.0	598.7	598.7	598.7	1.3	1.2	-147.53	-14.9	5.8	29.6	27.1	2.48	11.922		
700.0	697.5	697.5	697.5	1.6	1.5	-158.50	-14.9	5.8	43.6	40.7	2.95	14.814		
800.0	795.6	795.6	795.6	2.0	1.7	-164.89	-14.9	5.8	61.8	58.4	3.41	18.139		
900.0	893.1	894.8	894.7	2.5	1.9	-168.01	-16.4	5.3	82.8	79.0	3.85	21.516		
1,000.0	989.6	994.3	994.1	3.0	2.1	-168.71	-21.2	3.8	105.1	100.9	4.28	24.561		
1,100.0	1,085.3	1,094.0	1,093.5	3.6	2.3	-168.21	-29.2	1.1	128.7	123.9	4.75	27.119		
1,200.0	1,179.8	1,193.9	1,192.6	4.2	2.5	-167.06	-40.6	-2.7	153.5	148.2	5.26	29.202		
1,300.0	1,273.2	1,293.8	1,291.4	5.0	2.7	-165.55	-55.2	-7.5	179.6	173.7	5.83	30.818		
1,400.0	1,365.2	1,393.8	1,389.5	5.7	3.0	-163.84	-73.1	-13.4	207.0	200.5	6.48	31.948		
1,500.0	1,456.8	1,494.2	1,487.4	6.6	3.4	-161.99	-94.4	-20.5	233.8	226.6	7.25	32.244		
1,600.0	1,548.4	1,595.2	1,585.0	7.4	3.8	-159.85	-119.0	-28.6	259.1	250.9	8.14	31.829		
1,700.0	1,639.9	1,692.5	1,678.5	8.2	4.3	-157.74	-144.9	-37.2	283.5	274.4	9.11	31.117		
1,800.0	1,731.5	1,789.0	1,771.1	9.1	4.8	-155.98	-170.5	-45.7	308.2	298.0	10.13	30.432		
1,900.0	1,823.1	1,885.5	1,863.7	9.9	5.3	-154.47	-196.2	-54.2	333.1	321.9	11.18	29.801		
2,000.0	1,914.6	1,982.0	1,956.4	10.7	5.8	-153.18	-221.8	-62.7	358.2	345.9	12.25	29.233		
2,100.0	2,006.2	2,078.5	2,049.0	11.6	6.3	-152.05	-247.5	-71.2	383.4	370.1	13.35	28.726		
2,200.0	2,097.8	2,175.0	2,141.7	12.4	6.8	-151.07	-273.1	-79.7	408.8	394.3	14.46	28.275		
2,300.0	2,189.3	2,271.5	2,234.3	13.3	7.4	-150.19	-298.8	-88.2	434.3	418.7	15.58	27.872		
2,400.0	2,280.9	2,368.0	2,327.0	14.1	7.9	-149.42	-324.4	-96.7	459.8	443.1	16.71	27.513		
2,500.0	2,372.5	2,464.5	2,419.6	15.0	8.4	-148.72	-350.1	-105.2	485.4	467.6	17.85	27.192		
2,600.0	2,464.0	2,561.0	2,512.2	15.8	9.0	-148.10	-375.7	-113.6	511.1	492.1	19.00	26.904		
2,700.0	2,555.6	2,657.5	2,604.9	16.7	9.5	-147.54	-401.4	-122.1	536.9	516.7	20.15	26.643		
2,800.0	2,647.2	2,754.0	2,697.5	17.5	10.1	-147.02	-427.0	-130.6	562.6	541.3	21.31	26.408		
2,900.0	2,738.7	2,850.5	2,790.2	18.4	10.6	-146.55	-452.7	-139.1	588.5	566.0	22.47	26.194		
3,000.0	2,830.3	2,947.0	2,882.8	19.2	11.2	-146.12	-478.3	-147.6	614.3	590.7	23.63	26.000		
3,100.0	2,921.9	3,043.5	2,975.4	20.1	11.7	-145.73	-504.0	-156.1	640.2	615.4	24.79	25.822		
3,200.0	3,013.4	3,140.0	3,068.1	20.9	12.3	-145.37	-529.6	-164.6	666.1	640.1	25.96	25.658		
3,300.0	3,105.0	3,236.5	3,160.7	21.8	12.8	-145.03	-555.3	-173.1	692.0	664.9	27.13	25.508		
3,400.0	3,196.6	3,333.0	3,253.4	22.6	13.4	-144.72	-580.9	-181.6	718.0	689.7	28.30	25.369		
3,500.0	3,288.1	3,429.5	3,346.0	23.5	13.9	-144.43	-606.6	-190.1	744.0	714.5	29.47	25.241		
3,600.0	3,379.7	3,526.0	3,438.7	24.3	14.5	-144.16	-632.2	-198.6	770.0	739.3	30.65	25.122		
3,700.0	3,471.3	3,622.5	3,531.3	25.2	15.0	-143.90	-657.9	-207.1	796.0	764.1	31.82	25.011		
3,800.0	3,562.8	3,719.1	3,623.9	26.0	15.6	-143.67	-683.5	-215.6	822.0	789.0	33.00	24.908		
3,900.0	3,654.4	3,815.6	3,716.6	26.9	16.1	-143.44	-709.2	-224.1	848.0	813.8	34.18	24.812		
4,000.0	3,746.0	3,912.1	3,809.2	27.7	16.7	-143.23	-734.8	-232.6	874.1	838.7	35.36	24.722		
4,100.0	3,837.5	4,008.6	3,901.9	28.6	17.3	-143.04	-760.5	-241.1	900.1	863.6	36.53	24.637		
4,200.0	3,929.1	4,105.1	3,994.5	29.4	17.8	-142.85	-786.1	-249.6	926.2	888.4	37.71	24.557		
4,300.0	4,020.7	4,201.6	4,087.1	30.3	18.4	-142.67	-811.8	-258.1	952.2	913.3	38.89	24.482		
4,400.0	4,112.2	4,298.1	4,179.8	31.1	18.9	-142.51	-837.4	-266.6	978.3	938.2	40.08	24.412		
4,500.0	4,203.8	4,394.6	4,272.4	32.0	19.5	-142.35	-863.1	-275.1	1,004.4	963.1	41.26	24.345		
4,600.0	4,295.4	4,491.1	4,365.1	32.8	20.0	-142.20	-888.7	-283.6	1,030.5	988.0	42.44	24.282		
4,700.0	4,386.9	4,587.6	4,457.7	33.7	20.6	-142.06	-914.4	-292.0	1,056.6	1,013.0	43.62	24.222		
4,800.0	4,478.5	4,684.1	4,550.3	34.6	21.2	-141.92	-940.0	-300.5	1,082.7	1,037.9	44.80	24.165		
4,900.0	4,570.1	4,780.6	4,643.0	35.4	21.7	-141.79	-965.7	-309.0	1,108.8	1,062.8	45.99	24.111		

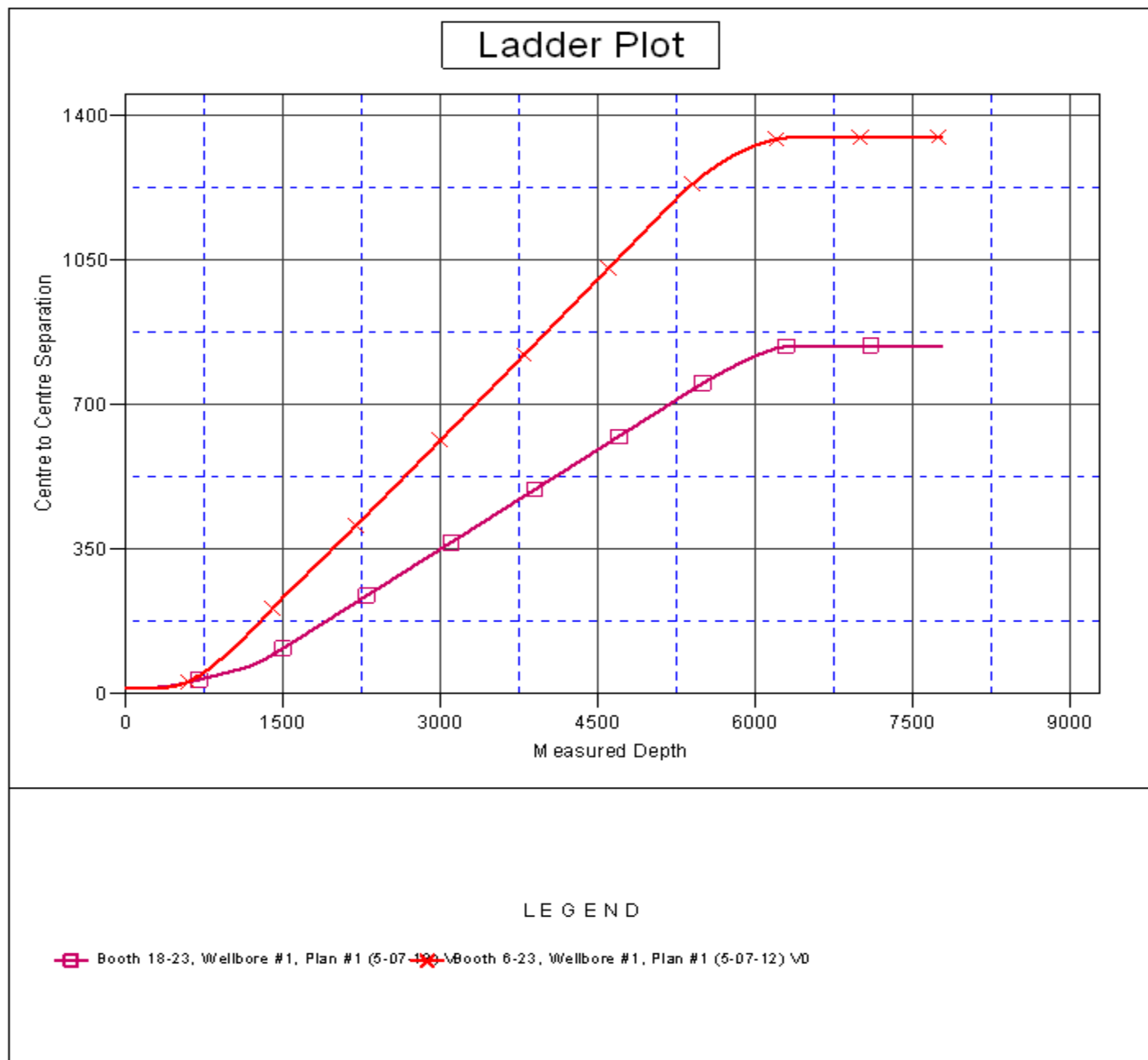
CC - Min centre to center distance or convergent point, SF - min separation factor, ES - min ellipse separation

Company:	BAYSWATER EXPLORATION & PRODUCTION	Local Co-ordinate Reference:	Well Booth 5-23
Project:	SEC.23-T7N-R65W	TVD Reference:	WELL @ 4912.0ft (Original Well Elev)
Reference Site:	Booth 10 Pad Sec.23-T7N-R65W	MD Reference:	WELL @ 4912.0ft (Original Well Elev)
Site Error:	0.0ft	North Reference:	True
Reference Well:	Booth 5-23	Survey Calculation Method:	Minimum Curvature
Well Error:	0.0ft	Output errors are at	2.00 sigma
Reference Wellbore	Wellbore #1	Database:	Landmark
Reference Design:	Plan #1 (5-07-12)	Offset TVD Reference:	Offset Datum

Offset Design Booth 10 Pad Sec.23-T7N-R65W - Booth 6-23 - Wellbore #1 - Plan #1 (5-07-12)													Offset Site Error:	0.0 ft
Survey Program: 0-MWD													Offset Well Error:	0.0 ft
Measured Depth (ft)	Vertical Depth (ft)	Measured Depth (ft)	Vertical Depth (ft)	Reference	Offset	Semi Major Axis	Highside Toolface (°)	Offset Wellbore Centre +N/-S (ft)	Offset Wellbore Centre +E/-W (ft)	Between Centres (ft)	Between Ellipses (ft)	Minimum Separation (ft)	Separation Factor	Warning
5,000.0	4,661.6	4,877.1	4,735.6	36.3	22.3	-141.67		-991.3	-317.5	1,134.9	1,087.7	47.17	24.060	
5,100.0	4,753.2	4,973.6	4,828.3	37.1	22.8	-141.55		-1,017.0	-326.0	1,161.0	1,112.7	48.35	24.011	
5,200.0	4,844.8	5,070.1	4,920.9	38.0	23.4	-141.44		-1,042.6	-334.5	1,187.2	1,137.6	49.54	23.965	
5,300.0	4,937.0	5,165.4	5,012.4	38.7	23.9	-141.59		-1,068.0	-342.9	1,212.1	1,161.4	50.66	23.925	
5,400.0	5,030.4	5,254.2	5,098.2	39.3	24.3	-141.73		-1,089.9	-350.2	1,234.8	1,183.3	51.51	23.970	
5,500.0	5,125.1	5,343.3	5,184.9	39.8	24.6	-141.89		-1,109.3	-356.6	1,255.5	1,203.3	52.26	24.025	
5,600.0	5,220.9	5,432.8	5,272.6	40.3	24.9	-142.05		-1,126.3	-362.2	1,274.3	1,221.3	52.92	24.080	
5,700.0	5,317.5	5,522.6	5,361.1	40.7	25.2	-142.23		-1,140.6	-367.0	1,291.0	1,237.5	53.49	24.137	
5,800.0	5,415.1	5,612.5	5,450.1	41.1	25.4	-142.41		-1,152.4	-370.9	1,305.6	1,251.7	53.96	24.196	
5,900.0	5,513.3	5,700.0	5,537.1	41.4	25.6	-142.61		-1,161.3	-373.8	1,318.2	1,263.9	54.34	24.259	
6,000.0	5,612.1	5,792.8	5,629.7	41.6	25.7	-142.81		-1,167.9	-376.0	1,328.8	1,274.1	54.63	24.325	
6,100.0	5,711.4	5,883.0	5,719.8	41.9	25.8	-143.03		-1,171.7	-377.3	1,337.2	1,282.4	54.81	24.397	
6,200.0	5,811.0	5,974.3	5,811.0	42.0	26.0	-143.25		-1,172.7	-377.6	1,343.6	1,288.7	54.91	24.468	
6,300.0	5,910.9	6,074.2	5,910.9	42.1	26.0	-143.42		-1,172.7	-377.6	1,347.5	1,292.5	54.97	24.513	
6,400.0	6,010.9	6,174.1	6,010.9	42.2	26.1	95.04		-1,172.7	-377.6	1,348.6	1,293.6	55.05	24.499	
6,500.0	6,110.9	6,274.1	6,110.9	42.3	26.2	95.04		-1,172.7	-377.6	1,348.6	1,293.4	55.22	24.423	
6,600.0	6,210.9	6,374.1	6,210.9	42.3	26.3	95.04		-1,172.7	-377.6	1,348.6	1,293.2	55.39	24.347	
6,700.0	6,310.9	6,474.1	6,310.9	42.4	26.4	95.04		-1,172.7	-377.6	1,348.6	1,293.1	55.57	24.269	
6,800.0	6,410.9	6,574.1	6,410.9	42.5	26.5	95.04		-1,172.7	-377.6	1,348.6	1,292.9	55.75	24.191	
6,900.0	6,510.9	6,674.1	6,510.9	42.5	26.6	95.04		-1,172.7	-377.6	1,348.6	1,292.7	55.93	24.112	
7,000.0	6,610.9	6,774.1	6,610.9	42.6	26.7	95.04		-1,172.7	-377.6	1,348.6	1,292.5	56.12	24.033	
7,100.0	6,710.9	6,874.1	6,710.9	42.7	26.8	95.04		-1,172.7	-377.6	1,348.6	1,292.3	56.31	23.952	
7,200.0	6,810.9	6,974.1	6,810.9	42.7	26.9	95.04		-1,172.7	-377.6	1,348.6	1,292.1	56.50	23.871	
7,300.0	6,910.9	7,074.1	6,910.9	42.8	27.0	95.04		-1,172.7	-377.6	1,348.6	1,291.9	56.69	23.789	
7,400.0	7,010.9	7,174.1	7,010.9	42.9	27.1	95.04		-1,172.7	-377.6	1,348.6	1,291.7	56.89	23.707	
7,500.0	7,110.9	7,274.1	7,110.9	42.9	27.2	95.04		-1,172.7	-377.6	1,348.6	1,291.5	57.09	23.624	
7,600.0	7,210.9	7,374.1	7,210.9	43.0	27.3	95.04		-1,172.7	-377.6	1,348.6	1,291.3	57.29	23.540	
7,700.0	7,310.9	7,474.1	7,310.9	43.1	27.4	95.04		-1,172.7	-377.6	1,348.6	1,291.1	57.50	23.456	
7,747.6	7,358.5	7,521.8	7,358.5	43.1	27.5	95.04		-1,172.7	-377.6	1,348.6	1,291.0	57.60	23.415	
7,774.1	7,385.0	7,543.2	7,380.0	43.1	27.5	95.04		-1,172.7	-377.6	1,348.6	1,291.0	57.65	23.395	

Company:	BAYSWATER EXPLORATION & PRODUCTION	Local Co-ordinate Reference:	Well Booth 5-23
Project:	SEC.23-T7N-R65W	TVD Reference:	WELL @ 4912.0ft (Original Well Elev)
Reference Site:	Booth 10 Pad Sec.23-T7N-R65W	MD Reference:	WELL @ 4912.0ft (Original Well Elev)
Site Error:	0.0ft	North Reference:	True
Reference Well:	Booth 5-23	Survey Calculation Method:	Minimum Curvature
Well Error:	0.0ft	Output errors are at	2.00 sigma
Reference Wellbore	Wellbore #1	Database:	Landmark
Reference Design:	Plan #1 (5-07-12)	Offset TVD Reference:	Offset Datum

Reference Depths are relative to WELL @ 4912.0ft (Original Well Elev) Coordinates are relative to: Booth 5-23
 Offset Depths are relative to Offset Datum Coordinate System is US State Plane 1983, Colorado Northern Zone
 Central Meridian is -105.500000 ° Grid Convergence at Surface is: 0.56°



Company:	BAYSWATER EXPLORATION & PRODUCTION	Local Co-ordinate Reference:	Well Booth 5-23
Project:	SEC.23-T7N-R65W	TVD Reference:	WELL @ 4912.0ft (Original Well Elev)
Reference Site:	Booth 10 Pad Sec.23-T7N-R65W	MD Reference:	WELL @ 4912.0ft (Original Well Elev)
Site Error:	0.0ft	North Reference:	True
Reference Well:	Booth 5-23	Survey Calculation Method:	Minimum Curvature
Well Error:	0.0ft	Output errors are at	2.00 sigma
Reference Wellbore	Wellbore #1	Database:	Landmark
Reference Design:	Plan #1 (5-07-12)	Offset TVD Reference:	Offset Datum

Reference Depths are relative to WELL @ 4912.0ft (Original Well Elev) Coordinates are relative to: Booth 5-23
Offset Depths are relative to Offset Datum
Coordinate System is US State Plane 1983, Colorado Northern Zone
Central Meridian is -105.500000 °
Grid Convergence at Surface is: 0.56°

