
OXY GRAND JUNCTION EBUSINESS

**Shell 797-03-16
GRAND VALLEY
Garfield County , Colorado**

Cement Surface Casing
16-May-2012

Post Job Summary

The Road to Excellence Starts with Safety

Sold To #: 344034	Ship To #: 344034	Quote #:	Sales Order #: 9487268
Customer: OXY GRAND JUNCTION EBUSINESS	Customer Rep: Benevides, Victor		
Well Name: Shelll	Well #: 797-03-16	API/UWI #: 05-045-21278	
Field: GRAND VALLEY	City (SAP): ADDISON	County/Parish: Garfield	State: Colorado
Lat: N 39.48 deg. OR N 39 deg. 28 min. 46.596 secs.	Long: W 108.202 deg. OR W -109 deg. 47 min. 52.98 secs.		
Contractor: H&P 330	Rig/Platform Name/Num: H&P 330		
Job Purpose: Cement Surface Casing			
Well Type: Development Well	Job Type: Cement Surface Casing		
Sales Person: HIMES, JEFFREY	Srvc Supervisor: SMITH, CHRISTOPHER	MBU ID Emp #: 452619	

Job Personnel

HES Emp Name	Exp Hrs	Emp #	HES Emp Name	Exp Hrs	Emp #	HES Emp Name	Exp Hrs	Emp #
ENGBERG, KEVIN W	10.0	454218	KEANE, JOHN Donovan	10.0	486519	SMITH, CHRISTOPHER Scott	10.0	452619
WALPOLE, DARREN Livingston	10.0	485294						

Equipment

HES Unit #	Distance-1 way	HES Unit #	Distance-1 way	HES Unit #	Distance-1 way	HES Unit #	Distance-1 way
10025118	120 mile	10616651C	120 mile	10969711	120 mile	11259885	120 mile
11808827	120 mile						

Job Hours

Date	On Location Hours	Operating Hours	Date	On Location Hours	Operating Hours	Date	On Location Hours	Operating Hours
05.15.2012	2	0	05.16.2012	8	3			

TOTAL Total is the sum of each column separately

Job				Job Times			
Formation Name				Date	Time	Time Zone	
Formation Depth (MD)	Top	0	Bottom	1020	Called Out	15 - May - 2012	17:00
Form Type		BHST		On Location	15 - May - 2012	22:00	MST
Job depth MD	1020. m	Job Depth TVD	1020. m	Job Started	16 - May - 2012	04:24	MST
Water Depth		Wk Ht Above Floor	. m	Job Completed	16 - May - 2012	06:07	MST
Perforation Depth (MD)	From		To	Departed Loc	16 - May - 2012	07:45	MST

Well Data

Description	New / Used	Max pressure MPa	Size mm	ID mm	Weight kg/m	Thread	Grade	Top MD m	Bottom MD m	Top TVD m	Bottom TVD m
-------------	------------	------------------	---------	-------	-------------	--------	-------	----------	-------------	-----------	--------------

Sales/Rental/3rd Party (HES)

Description	Qty	Qty uom	Depth	Supplier
R/A DENSOMETER W/CHART RECORDER,/JOB,ZI	1	JOB		
PORT. DATA ACQUIS. W/OPTICEM RT W/HES	1	EA		
ADC (AUTO DENSITY CTRL) SYS, /JOB,ZI	1	JOB		
PLUG,CMTG,TOP,9 5/8,HWE,8.16 MIN/9.06 MA	1	EA		

Tools and Accessories

Type	Size	Qty	Make	Depth	Type	Size	Qty	Make	Depth	Type	Size	Qty	Make
Guide Shoe					Packer					Top Plug	9.625	1	HES
Float Shoe					Bridge Plug					Bottom Plug			
Float Collar					Retainer					SSR plug set			
Insert Float										Plug Container	9.625	1	HES
Stage Tool										Centralizers			

Miscellaneous Materials

Gelling Agt	Conc	Surfactant	Conc	Acid Type	Qty	Conc	%
Treatment Fld	Conc	Inhibitor	Conc	Sand Type	Size	Qty	

Fluid Data

Stage/Plug #: 1									
Fluid #	Stage Type	Fluid Name	Qty	Qty uom	Mixing Density kg/m3	Yield m3/sk	Mix Fluid m3/tonne	Rate m3/min	Total Mix Fluid m3/tonne
1	Fresh Water Spacer		10.00	bbl	8.33	.0	.0	4.0	
2	Gel Water Spacer		20.00	bbl	8.34	.0	.0	4.0	
0.25 gal/bbl		LGC-36 UC, BULK (101582749)							
3	Fresh Water Spacer		10.00	bbl	8.33	.0	.0	4.0	
4	VersaCem Lead Cement	VERSACEM (TM) SYSTEM (452010)	158.0	sacks	12.3	2.38	13.77	6.0	13.77
13.77 Gal		FRESH WATER							
5	SwiftCem Tail Cement	SWIFTCES (TM) SYSTEM (452990)	126.0	sacks	14.2	1.43	6.85	6.0	6.85
6.85 Gal		FRESH WATER							
6	Fresh Water Displacement		71.00	bbl	8.34	.0	.0	6.0	
Calculated Values		Pressures		Volumes					
Displacement	71	Shut In: Instant		Lost Returns		Cement Slurry	99	Pad	
Top Of Cement	0	5 Min		Cement Returns	30	Actual Displacement	71	Treatment	
Frac Gradient		15 Min		Spacers	40	Load and Breakdown		Total Job	213
Rates									
Circulating	6	Mixing	6	Displacement	6	Avg. Job	6		
Cement Left In Pipe	Amount	44.17 ft	Reason	Shoe Joint					
Frac Ring # 1 @	ID	Frac ring # 2 @	ID	Frac Ring # 3 @	ID	Frac Ring # 4 @	ID		
The Information Stated Herein Is Correct				Customer Representative Signature					

The Road to Excellence Starts with Safety

Sold To #: 344034		Ship To #: 344034		Quote #:		Sales Order #: 9487268	
Customer: OXY GRAND JUNCTION EBUSINESS				Customer Rep: Benevides, Victor			
Well Name: Shell			Well #: 797-03-16			API/UWI #: 05-045-21278	
Field: GRAND VALLEY		City (SAP): ADDISON		County/Parish: Garfield		State: Colorado	
Legal Description:							
Lat: N 39.48 deg. OR N 39 deg. 28 min. 46.596 secs.				Long: W 108.202 deg. OR W -109 deg. 47 min. 52.98 secs.			
Contractor: H&P 330			Rig/Platform Name/Num: H&P 330				
Job Purpose: Cement Surface Casing						Ticket Amount:	
Well Type: Development Well			Job Type: Cement Surface Casing				
Sales Person: HIMES, JEFFREY			Srv Supervisor: SMITH, CHRISTOPHER			MBU ID Emp #: 452619	

Activity Description	Date/Time	Cht #	Rate m3/min	Volume m3		Pressure MPa		Comments
				Stage	Total	Tubing	Casing	
Pre-Convoy Safety Meeting	05/15/2012 19:30							ALL HES PERSONEL
Crew Leave Yard	05/15/2012 19:45							
Arrive At Loc	05/15/2012 22:00							RIG RUNNING CASEING.
Assessment Of Location Safety Meeting	05/15/2012 22:15							ALL HES PERSONEL
Rig-Up Equipment	05/15/2012 22:45							
Pre-Job Safety Meeting	05/16/2012 04:10							ALL HES PERSONEL AND RIG CREW
Start Job	05/16/2012 04:24							TD 1020', TP 999', SJ 44.17', LJ 35' OH 12.25", CSG 9.625" 36# J-55 , MUD 8.8 PPG. PUMPED JOB OFF LINE.
Other	05/16/2012 04:25		2	2			30.0	FILL LINES
Pressure Test	05/16/2012 04:28		0.5	0.5				ALL LINES HELD PRESSURE @ 1200 PSI
Pressure Test	05/16/2012 04:33		0.5	0.5				ALL LINES HELD PRESSURE @ 2200 PSI
Pump Spacer 1	05/16/2012 04:37		4	10			60.0	FRESH WATER
Pump Spacer 2	05/16/2012 04:41		4	20			60.0	LGC SPACER
Pump Spacer 1	05/16/2012 04:49		4	10			90.0	FRESH WATER
Activity Description	Date/Time	Cht #	Rate m3/min	Volume m3		Pressure MPa		Comments
				Stage	Total	Tubing	Casing	

Sold To # : 344034

Ship To # :344034

Quote # :

Sales Order # :

9487268

SUMMIT Version: 7.3.0021

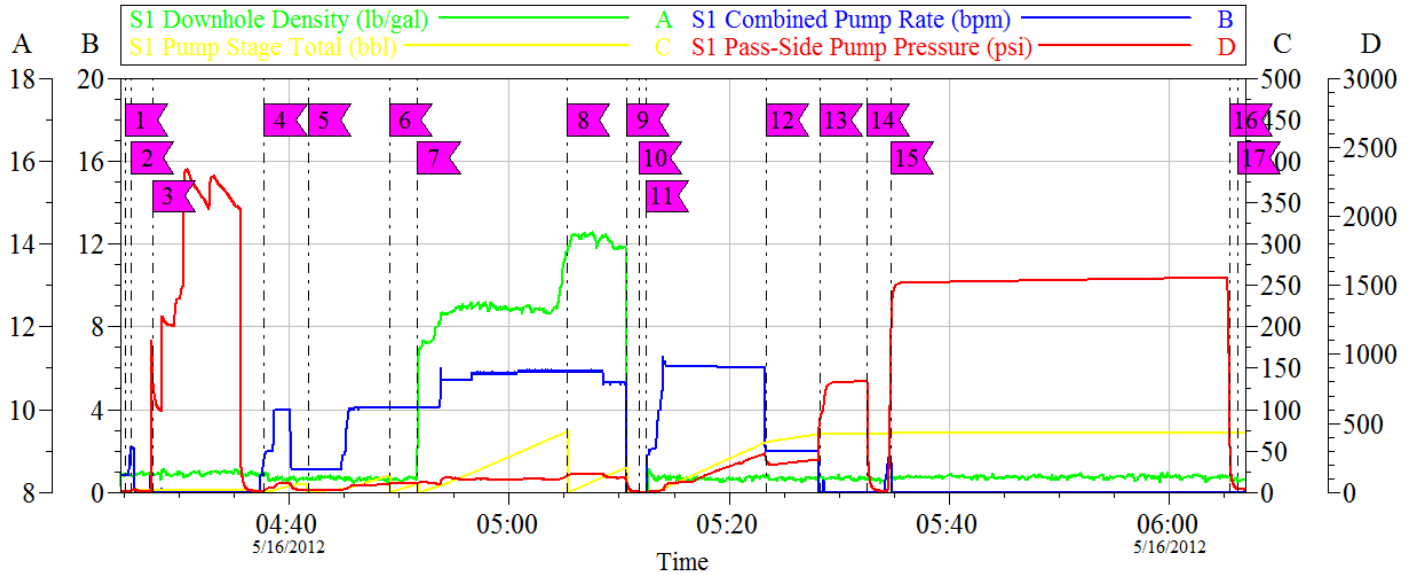
Saturday, June 16, 2012 11:17:00

Cementing Job Log

Pump Lead Cement	05/16/2012 04:51		6	67			124.0	158 SKS, 12.3 PPG, 2.38 FT3/SK, 13.77 GAL/SK, SET UP TIME 3:05 @ 70 BC.
Pump Tail Cement	05/16/2012 05:05		6	32.1			130.0	126 SKS, 14.2 PPG, 1.43 FT3/ SK, 6.85 GAL/SK, SET UP TIME 3:07 @ 70 BC
Drop Top Plug	05/16/2012 05:11							
Pump Displacement	05/16/2012 05:12		6	61.1			298.0	FRESH WATER
Slow Rate	05/16/2012 05:23		2	10			256.0	
Bump Plug	05/16/2012 05:28						845.0	PLUG BUMPED
Check Floats	05/16/2012 05:32							FLOATS HELD
Other	05/16/2012 05:34		0.5	0.5			1580. 0	PRESSURE TEST CASEING
Shutdown	05/16/2012 05:51							
End Job	05/16/2012 06:05							GOOD CIRCULATION THROUGHOUT JOB, 30 BBLs OF CEMENT TO SURFACE, JOB WAS PUMPED OFF LINE.
Post-Job Safety Meeting (Pre Rig-Down)	05/16/2012 06:10							ALL HES PERSONEL
Rig-Down Completed	05/16/2012 07:00							
Depart Location Safety Meeting	05/16/2012 07:30							ALL HES PERSONEL
Crew Leave Location	05/16/2012 07:45							
Other	05/16/2012 07:46							THANK YOU FOR CHOOSING HALLIBURTON, CHRIS SMITH AND CREW

OXY Shell 797-03-16

Surface



Local Event Log

1 Start Job	04:25:08	2 Fill Lines	04:25:40	3 Pressure Test	04:27:37
4 Pump H2O Spacer	04:37:46	5 Pump Gel Spacer	04:41:46	6 Pump H2O Spacer	04:49:07
7 Pump Lead Cement	04:51:42	8 Pump Tail Cement	05:05:19	9 Shut Down	05:10:43
10 Drop Plug	05:11:47	11 Pump Displacement	05:12:27	12 Slow Rate	05:23:21
13 Bump Plug	05:28:13	14 Check Floats	05:32:32	15 Pressure Test Casing	05:34:41
16 Release Pressure	06:05:28	17 End Job	06:06:14		

Customer: OXY GRAND JUNCTION EBUSINESS

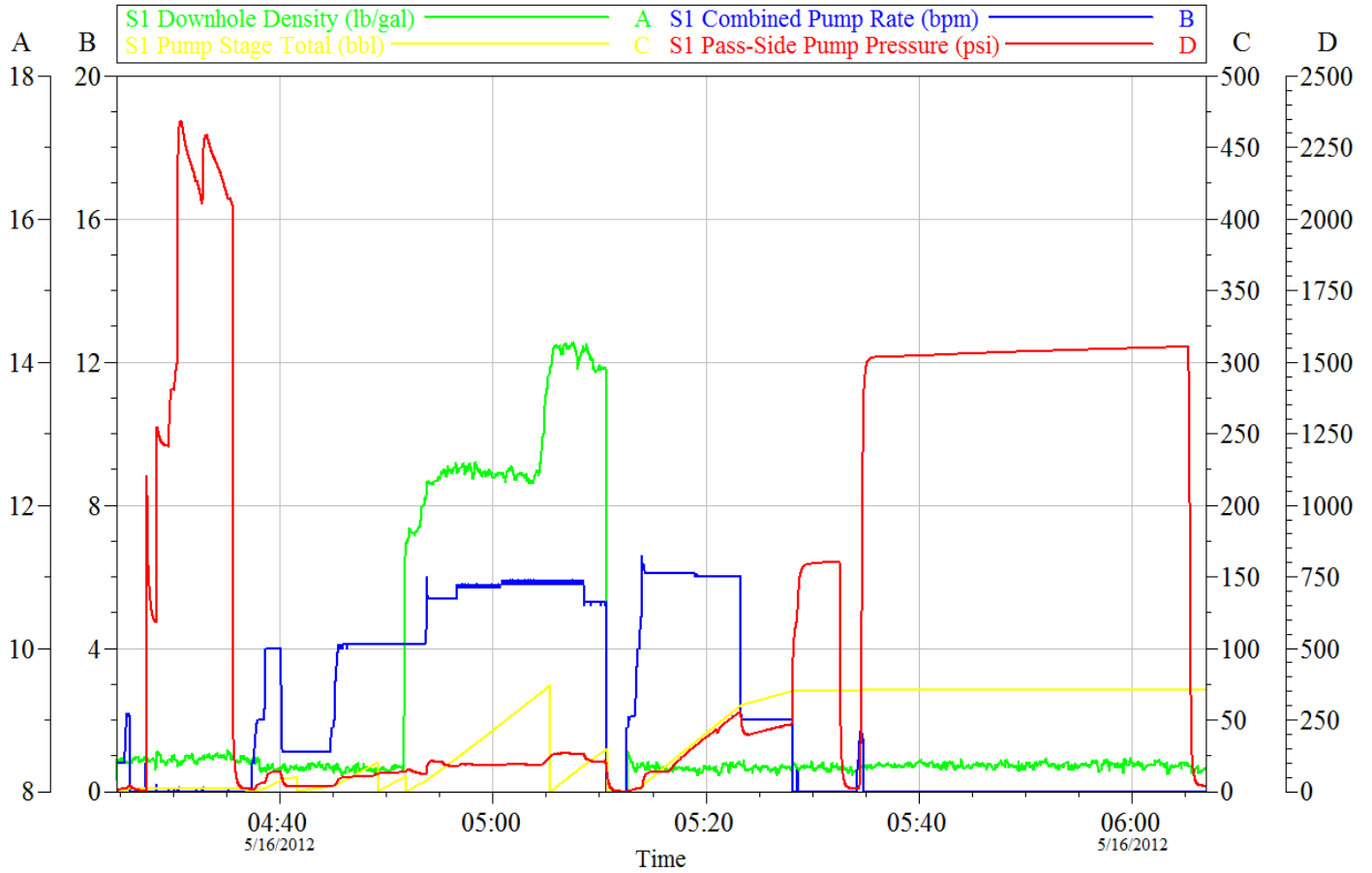
Job Date: 16-May-2012

Sales Order #: 9487268

OptiCem v6.4.10
16-Jun-12 11:34

OXY Shell 797-03-16

Surface



Customer: OXY GRAND JUNCTION EBUSINESS

Job Date: 16-May-2012

Sales Order #: 9487268

OptiCem v6.4.10
16-Jun-12 11:22