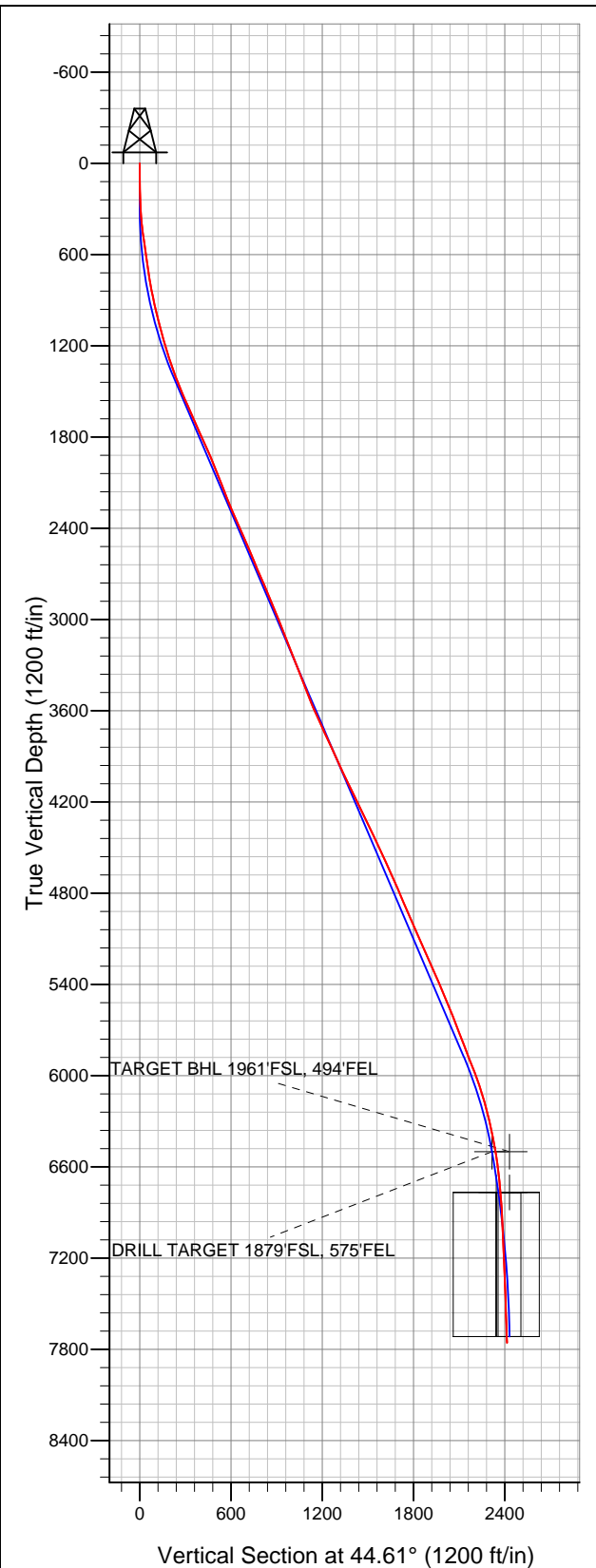


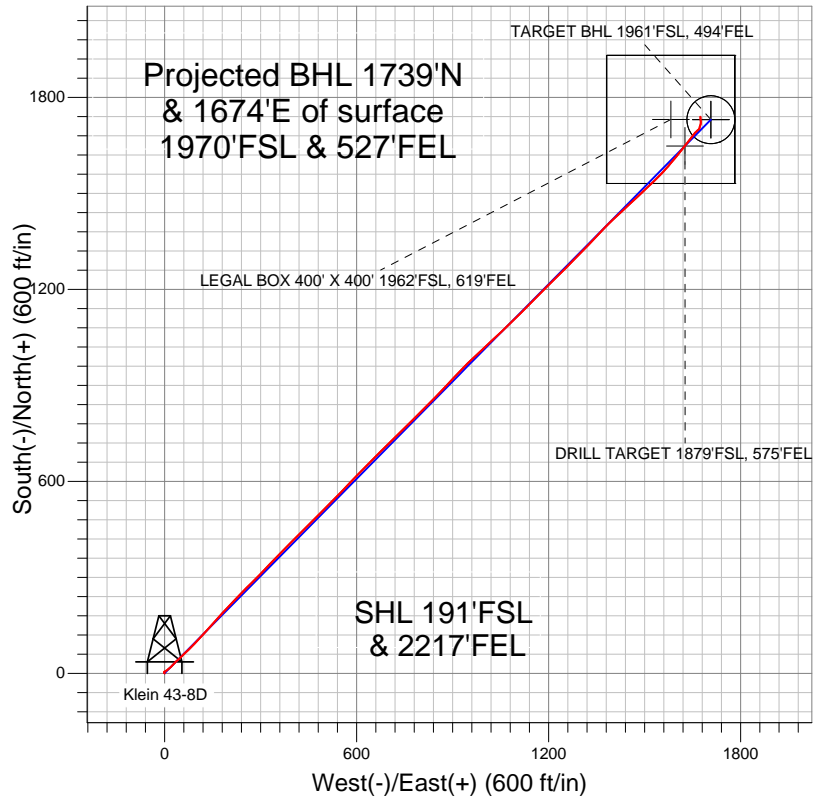
Well Name: Klein 43-8D

Surface Location: Klein 44-8D Pad Sec.8-T4N-R67W
North American Datum 1983 US State Plane 1983 Colorado Northern Zone
Ground Elevation: 4794.0

+N/-S	+E/-W	Northing	Easting	Latitude	Longitude	Slot
0.0	0.0	1360242.85	3163413.87	40.320785	-104.913938	
		Original Well Elev	WELL @ 4806.0ft (Original Well Elev)			



Synergy Resources



LEGEND

- Survey #1
- Klein 43-8D, Wellbore #1, Plan #2 (2-1-12) R V0
- Wellbore #1

Final Survey Plot

Projected Final Survey -
8212'MD & 7756'TVD @ 2414'VS
2.90 deg Inc 349.50 deg AZ

Project: SEC.8-T4N-R67W
Site: Klein 44-8D Pad Sec.8-T4N-R67W
Well: Klein 43-8D
Plan: Wellbore #1



Synergy Resources

SEC.8-T4N-R67W

Klein 44-8D Pad Sec.8-T4N-R67W

Klein 43-8D

Wellbore #1

Survey: Survey #1

Standard Survey Report

08 February, 2012

Company:	Synergy Resources	Local Co-ordinate Reference:	Well Klein 43-8D
Project:	SEC.8-T4N-R67W	TVD Reference:	WELL @ 4806.0ft (Original Well Elev)
Site:	Klein 44-8D Pad Sec.8-T4N-R67W	MD Reference:	WELL @ 4806.0ft (Original Well Elev)
Well:	Klein 43-8D	North Reference:	True
Wellbore:	Wellbore #1	Survey Calculation Method:	Minimum Curvature
Design:	Wellbore #1	Database:	Landmark

Project	SEC.8-T4N-R67W, Weld County, Colorado		
Map System:	US State Plane 1983	System Datum:	Mean Sea Level
Geo Datum:	North American Datum 1983		Using Well Reference Point
Map Zone:	Colorado Northern Zone		Using geodetic scale factor

Site	Klein 44-8D Pad Sec.8-T4N-R67W		
Site Position:		Northing:	1,360,242.64 ft
From:	Lat/Long	Easting:	3,163,433.95 ft
Position Uncertainty:	0.0 ft	Slot Radius:	"
		Latitude:	40.320784
		Longitude:	-104.913866
		Grid Convergence:	0.38 °

Well	Klein 43-8D		
Well Position	+N/-S	0.0 ft	Northing:
	+E/-W	0.0 ft	Easting:
Position Uncertainty	0.0 ft	Wellhead Elevation:	ft
		Latitude:	40.320785
		Longitude:	-104.913938
		Ground Level:	4,794.0 ft

Wellbore	Wellbore #1				
Magnetics	Model Name	Sample Date	Declination (°)	Dip Angle (°)	Field Strength (nT)
	IGRF2010	1/3/2012	8.86	66.94	53,016

Design	Wellbore #1				
Audit Notes:					
Version:	1.0	Phase:	ACTUAL	Tie On Depth:	0.0
Vertical Section:	Depth From (TVD) (ft)	+N/-S (ft)	+E/-W (ft)	Direction (°)	
	0.0	0.0	0.0	44.61	

Survey Program	Date	2/8/2012			
From (ft)	To (ft)	Survey (Wellbore)	Tool Name	Description	
81.0	8,212.0	Survey #1 (Wellbore #1)	MWD	MWD - Standard	

Survey										
Measured Depth (ft)	Inclination (°)	Azimuth (°)	Vertical Depth (ft)	+N/-S (ft)	+E/-W (ft)	Vertical Section (ft)	Dogleg Rate (°/100ft)	Build Rate (°/100ft)	Turn Rate (°/100ft)	
0.0	0.00	0.00	0.0	0.0	0.0	0.0	0.00	0.00	0.00	
81.0	1.80	317.00	81.0	0.9	-0.9	0.1	2.22	2.22	0.00	
171.0	1.60	357.60	171.0	3.2	-1.9	1.0	1.33	-0.22	45.11	
261.0	2.50	62.80	260.9	5.4	-0.2	3.7	2.59	1.00	72.44	
352.0	4.20	60.50	351.7	7.9	4.5	8.8	1.87	1.87	-2.53	
444.0	7.70	50.00	443.2	13.5	12.1	18.2	3.97	3.80	-11.41	
525.0	8.70	46.30	523.4	21.3	20.7	29.7	1.40	1.23	-4.57	
604.0	7.90	41.60	601.6	29.5	28.6	41.1	1.33	-1.01	-5.95	
698.0	8.00	46.80	694.7	38.8	37.7	54.1	0.77	0.11	5.53	
792.0	9.80	46.70	787.5	48.7	48.3	68.6	1.91	1.91	-0.11	
885.0	11.50	46.30	878.9	60.6	60.8	85.8	1.83	1.83	-0.43	
979.0	13.40	45.60	970.7	74.7	75.3	106.0	2.03	2.02	-0.74	
1,073.0	14.70	43.70	1,061.9	90.9	91.3	128.9	1.47	1.38	-2.02	

Company:	Synergy Resources	Local Co-ordinate Reference:	Well Klein 43-8D
Project:	SEC.8-T4N-R67W	TVD Reference:	WELL @ 4806.0ft (Original Well Elev)
Site:	Klein 44-8D Pad Sec.8-T4N-R67W	MD Reference:	WELL @ 4806.0ft (Original Well Elev)
Well:	Klein 43-8D	North Reference:	True
Wellbore:	Wellbore #1	Survey Calculation Method:	Minimum Curvature
Design:	Wellbore #1	Database:	Landmark

Survey										
Measured Depth (ft)	Inclination (°)	Azimuth (°)	Vertical Depth (ft)	+N/-S (ft)	+E/-W (ft)	Vertical Section (ft)	Dogleg Rate (°/100ft)	Build Rate (°/100ft)	Turn Rate (°/100ft)	
1,166.0	16.00	44.00	1,151.6	108.7	108.4	153.5	1.40	1.40	0.32	
1,260.0	17.10	41.60	1,241.7	128.3	126.6	180.2	1.38	1.17	-2.55	
1,354.0	19.30	42.60	1,331.0	150.1	146.3	209.6	2.36	2.34	1.06	
1,447.0	21.50	41.90	1,418.1	174.1	168.0	241.9	2.38	2.37	-0.75	
1,541.0	22.50	42.30	1,505.3	200.2	191.7	277.1	1.08	1.06	0.43	
1,635.0	23.60	45.20	1,591.8	226.8	217.1	313.9	1.68	1.17	3.09	
1,728.0	23.80	43.00	1,677.0	253.6	243.1	351.3	0.97	0.22	-2.37	
1,822.0	24.10	45.60	1,762.9	280.9	269.8	389.4	1.17	0.32	2.77	
1,916.0	24.70	44.70	1,848.5	308.3	297.3	428.3	0.75	0.64	-0.96	
2,010.0	23.00	43.50	1,934.4	335.6	323.8	466.3	1.88	-1.81	-1.28	
2,103.0	22.00	42.80	2,020.4	361.5	348.1	501.8	1.11	-1.08	-0.75	
2,197.0	21.30	45.40	2,107.7	386.4	372.2	536.5	1.26	-0.74	2.77	
2,291.0	21.90	45.80	2,195.1	410.7	396.9	571.1	0.66	0.64	0.43	
2,384.0	22.70	44.90	2,281.2	435.5	422.0	606.4	0.94	0.86	-0.97	
2,478.0	23.70	44.20	2,367.6	461.9	448.0	643.4	1.10	1.06	-0.74	
2,572.0	23.90	45.60	2,453.6	488.7	474.8	681.4	0.64	0.21	1.49	
2,665.0	23.30	44.00	2,538.8	515.1	501.0	718.6	0.94	-0.65	-1.72	
2,759.0	21.90	44.90	2,625.6	540.9	526.3	754.7	1.53	-1.49	0.96	
2,853.0	23.50	44.20	2,712.3	566.8	551.8	791.0	1.73	1.70	-0.74	
2,947.0	23.70	43.10	2,798.4	594.0	577.7	828.6	0.51	0.21	-1.17	
3,040.0	22.60	43.80	2,883.9	620.6	602.9	865.2	1.22	-1.18	0.75	
3,134.0	21.70	45.10	2,971.0	645.9	627.7	900.6	1.09	-0.96	1.38	
3,227.0	21.90	44.50	3,057.4	670.4	652.0	935.1	0.32	0.22	-0.65	
3,321.0	21.40	45.80	3,144.7	694.8	676.6	969.8	0.74	-0.53	1.38	
3,415.0	21.20	46.30	3,232.3	718.5	701.2	1,003.9	0.29	-0.21	0.53	
3,508.0	21.40	44.50	3,319.0	742.2	725.2	1,037.7	0.74	0.22	-1.94	
3,602.0	20.90	44.50	3,406.6	766.4	749.0	1,071.6	0.53	-0.53	0.00	
3,695.0	21.50	45.60	3,493.3	790.2	772.8	1,105.3	0.77	0.65	1.18	
3,789.0	23.90	46.30	3,580.0	815.4	798.9	1,141.5	2.57	2.55	0.74	
3,883.0	24.20	44.90	3,665.9	842.2	826.3	1,179.8	0.69	0.32	-1.49	
3,976.0	24.30	43.30	3,750.7	869.6	852.8	1,218.0	0.71	0.11	-1.72	
4,070.0	25.00	43.10	3,836.1	898.2	879.7	1,257.2	0.75	0.74	-0.21	
4,164.0	24.40	42.80	3,921.5	927.0	906.4	1,296.5	0.65	-0.64	-0.32	
4,257.0	25.10	44.40	4,006.0	955.1	933.3	1,335.4	1.04	0.75	1.72	
4,351.0	26.00	46.70	4,090.8	983.5	962.2	1,375.9	1.42	0.96	2.45	
4,445.0	26.30	47.40	4,175.2	1,011.7	992.6	1,417.3	0.46	0.32	0.74	
4,538.0	26.40	45.90	4,258.5	1,040.1	1,022.6	1,458.6	0.72	0.11	-1.61	
4,632.0	25.10	46.70	4,343.2	1,068.3	1,052.1	1,499.4	1.43	-1.38	0.85	
4,726.0	25.50	46.10	4,428.1	1,096.0	1,081.2	1,539.5	0.51	0.43	-0.64	
4,819.0	24.20	45.90	4,512.5	1,123.2	1,109.3	1,578.6	1.40	-1.40	-0.22	
4,913.0	25.60	46.50	4,597.8	1,150.5	1,137.9	1,618.2	1.51	1.49	0.64	
5,007.0	23.70	44.20	4,683.2	1,178.1	1,165.8	1,657.4	2.26	-2.02	-2.45	
5,101.0	23.30	43.30	4,769.4	1,205.1	1,191.7	1,694.8	0.57	-0.43	-0.96	
5,195.0	22.50	44.50	4,856.0	1,231.5	1,217.0	1,731.4	0.99	-0.85	1.28	
5,288.0	23.70	46.70	4,941.6	1,257.0	1,243.1	1,767.9	1.59	1.29	2.37	
5,382.0	24.70	44.90	5,027.3	1,283.9	1,270.7	1,806.4	1.32	1.06	-1.91	
5,476.0	24.10	44.50	5,112.9	1,311.5	1,298.0	1,845.2	0.66	-0.64	-0.43	
5,569.0	23.70	43.10	5,197.9	1,338.7	1,324.1	1,882.9	0.75	-0.43	-1.51	
5,663.0	23.40	42.60	5,284.1	1,366.2	1,349.7	1,920.4	0.38	-0.32	-0.53	
5,757.0	23.70	44.70	5,370.3	1,393.4	1,375.6	1,958.0	0.95	0.32	2.23	
5,851.0	22.60	46.50	5,456.7	1,419.2	1,402.0	1,994.9	1.39	-1.17	1.91	
5,944.0	22.10	48.10	5,542.7	1,443.2	1,428.0	2,030.3	0.85	-0.54	1.72	
6,038.0	22.00	47.20	5,629.8	1,467.0	1,454.0	2,065.5	0.37	-0.11	-0.96	
6,132.0	21.30	46.50	5,717.2	1,490.7	1,479.3	2,100.2	0.79	-0.74	-0.74	

Company:	Synergy Resources	Local Co-ordinate Reference:	Well Klein 43-8D
Project:	SEC.8-T4N-R67W	TVD Reference:	WELL @ 4806.0ft (Original Well Elev)
Site:	Klein 44-8D Pad Sec.8-T4N-R67W	MD Reference:	WELL @ 4806.0ft (Original Well Elev)
Well:	Klein 43-8D	North Reference:	True
Wellbore:	Wellbore #1	Survey Calculation Method:	Minimum Curvature
Design:	Wellbore #1	Database:	Landmark

Survey										
Measured Depth (ft)	Inclination (°)	Azimuth (°)	Vertical Depth (ft)	+N/-S (ft)	+E/-W (ft)	Vertical Section (ft)	Dogleg Rate (°/100ft)	Build Rate (°/100ft)	Turn Rate (°/100ft)	
6,225.0	21.00	45.90	5,803.9	1,513.9	1,503.6	2,133.7	0.40	-0.32	-0.65	
6,319.0	21.20	46.70	5,891.6	1,537.3	1,528.0	2,167.5	0.37	0.21	0.85	
6,413.0	20.90	44.00	5,979.4	1,561.0	1,552.1	2,201.3	1.08	-0.32	-2.87	
6,507.0	18.60	41.00	6,067.8	1,584.4	1,573.5	2,233.0	2.67	-2.45	-3.19	
6,600.0	16.50	39.40	6,156.5	1,605.8	1,591.7	2,261.0	2.32	-2.26	-1.72	
6,694.0	14.20	37.90	6,247.1	1,625.2	1,607.2	2,285.7	2.48	-2.45	-1.60	
6,788.0	12.40	38.40	6,338.6	1,642.2	1,620.6	2,307.2	1.92	-1.91	0.53	
6,882.0	11.00	38.70	6,430.7	1,657.1	1,632.4	2,326.1	1.49	-1.49	0.32	
6,948.4	9.59	38.37	6,496.0	1,666.4	1,639.8	2,337.9	2.13	-2.13	-0.50	
DRILL TARGET 1879'FSL, 575'FEL										
6,967.2	9.19	38.26	6,514.5	1,668.8	1,641.7	2,341.0	2.13	-2.13	-0.60	
TARGET BHL 1961'FSL, 494'FEL										
6,976.0	9.00	38.20	6,523.2	1,669.9	1,642.6	2,342.4	2.13	-2.13	-0.64	
7,069.0	7.60	35.40	6,615.3	1,680.6	1,650.7	2,355.7	1.57	-1.51	-3.01	
7,163.0	5.60	44.00	6,708.6	1,689.0	1,657.4	2,366.4	2.37	-2.13	9.15	
7,220.0	4.68	46.97	6,765.4	1,692.6	1,661.1	2,371.5	1.67	-1.61	5.21	
LEGAL BOX 400' X 400' 1962'FSL, 619'FEL										
7,227.1	4.57	47.42	6,772.5	1,693.0	1,661.5	2,372.1	1.67	-1.59	6.38	
TARGET CIRCLE 1961'FSL, 494'FEL										
7,257.0	4.10	49.60	6,802.3	1,694.5	1,663.2	2,374.3	1.67	-1.58	7.28	
7,350.0	3.10	47.70	6,895.1	1,698.3	1,667.6	2,380.2	1.08	-1.08	-2.04	
7,444.0	2.60	26.80	6,989.0	1,702.0	1,670.4	2,384.7	1.22	-0.53	-22.23	
7,538.0	3.50	9.70	7,082.9	1,706.7	1,671.9	2,389.1	1.35	0.96	-18.19	
7,632.0	3.00	27.70	7,176.7	1,711.7	1,673.5	2,393.8	1.20	-0.53	19.15	
7,725.0	2.60	12.70	7,269.6	1,715.9	1,675.1	2,397.9	0.89	-0.43	-16.13	
7,819.0	2.60	4.10	7,363.5	1,720.1	1,675.7	2,401.4	0.41	0.00	-9.15	
7,912.0	2.90	359.50	7,456.4	1,724.6	1,675.8	2,404.6	0.40	0.32	-4.95	
8,006.0	2.60	349.90	7,550.3	1,729.0	1,675.4	2,407.5	0.58	-0.32	-10.21	
8,100.0	3.00	352.90	7,644.2	1,733.6	1,674.8	2,410.3	0.45	0.43	3.19	
8,162.0	2.90	349.50	7,706.1	1,736.7	1,674.3	2,412.2	0.32	-0.16	-5.48	
8,212.0	2.90	349.50	7,756.0	1,739.2	1,673.8	2,413.6	0.00	0.00	0.00	

Checked By: _____	Approved By: _____	Date: _____
-------------------	--------------------	-------------