

---

# **OXY GRAND JUNCTION EBUSINESS**

---

**CC 697-05-57B  
GRAND VALLEY  
Garfield County , Colorado**

## **Cement Surface Casing** **27-Apr-2012**

### **Post Job Summary**

## The Road to Excellence Starts with Safety

Sold To #: 344034	Ship To #: 344034	Quote #:	Sales Order #: 9466912
Customer: OXY GRAND JUNCTION EBUSINESS	Customer Rep: Rosser, Terry		
Well Name: CC	Well #: 697-05-57B	API/UWI #: 05-045-20955	
Field: GRAND VALLEY	City (SAP): ADDISON	County/Parish: Garfield	State: Colorado
Lat: N 39.544 deg. OR N 39 deg. 32 min. 37.464 secs.	Long: W 108.246 deg. OR W -109 deg. 45 min. 12.672 secs.		
Contractor: OXY	Rig/Platform Name/Num: H&P 353		
Job Purpose: Cement Surface Casing			
Well Type: Development Well	Job Type: Cement Surface Casing		
Sales Person: HIMES, JEFFREY	Srv Supervisor: CHASTAIN, DERICK	MBU ID Emp #: 455848	

## Job Personnel

HES Emp Name	Exp Hrs	Emp #	HES Emp Name	Exp Hrs	Emp #	HES Emp Name	Exp Hrs	Emp #
CHASTAIN, DERICK Allan	9.5	455848	HARDRICK, RAYMOND Frank	9.5	391324	TRIPLETT, MICHEAL Anthony	9.5	447908
WEAVER, CARLTON Russell	9.5	457698						

## Equipment

HES Unit #	Distance-1 way	HES Unit #	Distance-1 way	HES Unit #	Distance-1 way	HES Unit #	Distance-1 way
10722398	120 mile	10744648C	120 mile	10867531	120 mile	11018454	120 mile
11139330	120 mile	11583932	120 mile	11808845	120 mile	4901	120 mile
6543	120 mile						

## Job Hours

Date	On Location Hours	Operating Hours	Date	On Location Hours	Operating Hours	Date	On Location Hours	Operating Hours
4/26/2012	6	4	4/27/2012	3.5	3			

**TOTAL** Total is the sum of each column separately

## Job

Formation Name	Top	Bottom	Called Out	Date	Time	Time Zone
Formation Depth (MD)			On Location	26 - Apr - 2012	11:35	MST
Form Type		BHST	Job Started	26 - Apr - 2012	18:00	MST
Job depth MD	2715. ft	Job Depth TVD	Job Completed	26 - Apr - 2012	21:33	MST
Water Depth		Wk Ht Above Floor	Departed Loc	27 - Apr - 2012	01:41	MST
Perforation Depth (MD)	From	To		27 - Apr - 2012	03:30	MST

## Well Data

Description	New / Used	Max pressure psig	Size in	ID in	Weight lbm/ft	Thread	Grade	Top MD ft	Bottom MD ft	Top TVD ft	Bottom TVD ft
OPEN HOLE				14.75				.	2715.	.	
SURFACE CASING	Unknown		9.625	8.921	36.		J-55	.	2668.		

Sales/Rental/3<sup>rd</sup> Party (HES)

Description	Qty	Qty uom	Depth	Supplier
PLUG,CMTG,TOP,9 5/8,HWE,8.16 MIN/9.06 MA	1	EA		

## Tools and Accessories

Type	Size	Qty	Make	Depth	Type	Size	Qty	Make	Depth	Type	Size	Qty	Make
Guide Shoe					Packer					Top Plug	9 5/8	1	HES
Float Shoe					Bridge Plug					Bottom Plug			
Float Collar					Retainer					SSR plug set			
Insert Float										Plug Container	9 5/8	1	HES
Stage Tool										Centralizers			

## Miscellaneous Materials

Gelling Agt	Conc	Surfactant	Conc	Acid Type	Qty	Conc	%
Treatment Fld	Conc	Inhibitor	Conc	Sand Type	Size		Qty

## Fluid Data

Stage/Plug #: 1

Fluid #	Stage Type	Fluid Name	Qty	Qty uom	Mixing Density lbm/gal	Yield ft <sup>3</sup> /sk	Mix Fluid Gal/sk	Rate bbl/min	Total Mix Fluid Gal/sk
1	Fresh Water Spacer		10.00	bbl	8.33	.0	.0	4	
2	Gel Water Spacer		20.00	bbl	8.34	.0	.0	4	
0.25 gal/bbl		LGC-36 UC, BULK (101582749)							
3	Fresh Water Spacer		10.00	bbl	8.33	.0	.0	4	
4	Lead Cement	HALCEM (TM) SYSTEM (452986)	1162.0	sacks	12.3	2.15	11.83	6	11.83
11.83 Gal		FRESH WATER							
5	Tail Cement	VERSACEM (TM) SYSTEM (452010)	160.0	sacks	12.8	2.07	10.67	6	10.67
10.67 Gal		FRESH WATER							
6	Fresh Water Displacement		207.00	bbl	8.34	.0	.0	6	
<b>Calculated Values</b>		<b>Pressures</b>		<b>Volumes</b>					
Displacement	203	Shut In: Instant		Lost Returns	62	Cement Slurry	503.9	Pad	
Top Of Cement	SURFACE	5 Min		Cement Returns	162	Actual Displacement	207	Treatment	
Frac Gradient		15 Min		Spacers	60	Load and Breakdown		Total Job	766.9
<b>Rates</b>									
Circulating	5	Mixing		6	Displacement	8	Avg. Job		6
Cement Left In Pipe	Amount	42 ft	Reason	Shoe Joint					
Frac Ring # 1 @	ID		Frac ring # 2 @	ID		Frac Ring # 3 @	ID		Frac Ring # 4 @
The Information Stated Herein Is Correct				Customer Representative Signature					

*The Road to Excellence Starts with Safety*

<b>Sold To #:</b> 344034	<b>Ship To #:</b> 344034	<b>Quote #:</b>	<b>Sales Order #:</b> 9466912
<b>Customer:</b> OXY GRAND JUNCTION EBUSINESS		<b>Customer Rep:</b> Rosser, Terry	
<b>Well Name:</b> CC	<b>Well #:</b> 697-05-57B	<b>API/UWI #:</b> 05-045-20955	
<b>Field:</b> GRAND VALLEY	<b>City (SAP):</b> ADDISON	<b>County/Parish:</b> Garfield	<b>State:</b> Colorado
<b>Legal Description:</b>			
<b>Lat:</b> N 39.544 deg. OR N 39 deg. 32 min. 37.464 secs.		<b>Long:</b> W 108.246 deg. OR W -109 deg. 45 min. 12.672 secs.	
<b>Contractor:</b> OXY		<b>Rig/Platform Name/Num:</b> H&P 353	
<b>Job Purpose:</b> Cement Surface Casing			<b>Ticket Amount:</b>
<b>Well Type:</b> Development Well		<b>Job Type:</b> Cement Surface Casing	
<b>Sales Person:</b> HIMES, JEFFREY		<b>Srvc Supervisor:</b> CHASTAIN, DERICK	<b>MBU ID Emp #:</b> 455848

Activity Description	Date/Time	Cht #	Rate bbl/min	Volume bbl		Pressure psig		Comments
				Stage	Total	Tubing	Casing	
Call Out	04/26/2012 11:35							
Arrive at Location from Service Center	04/26/2012 18:00							RIG STILL RUNNING CASING
Assessment Of Location Safety Meeting	04/26/2012 18:30							WITH ALL HES PERSONNEL
Other	04/26/2012 18:40							SPOT EQUIPMENT
Pre-Rig Up Safety Meeting	04/26/2012 18:50							WITH ALL HES PERSONNEL
Rig-Up Equipment	04/26/2012 19:00							RIG UP INTO CELLAR FOR OFF LINE CEMENT JOB.
Pre-Job Safety Meeting	04/26/2012 21:00							WITH ALL PERSONNEL ON LOCATION
Start Job	04/26/2012 21:33							TD: 2715', TP: 2668', SJ: 42', FC: 2626', CSG: 9.625" 36# J-55, OH: 14.75", MUD: PPG: 9.3, TEMP: 92, PV: 21, YP: 16
Other	04/26/2012 21:34		2	2			34.0	FILL LINES
Test Lines	04/26/2012 21:36							STAGED TEST AT 1610 PSI, THEN TESTED TO 2850 PSI
Pump Spacer 1	04/26/2012 21:44		4	10			142.0	FRESH H2O SPACER
Pump Spacer 1	04/26/2012 21:50		4	20			150.0	GEL SPACER, 5 GAL PER 20 BBL
Pump Spacer 1	04/26/2012 21:56		4	10			176.0	FRESH H2O SPACER. SLOWED RATE TO MIX UP TUB.
Activity Description	Date/Time	Cht #	Rate bbl/min	Volume bbl		Pressure psig		Comments
				Stage	Total	Tubing	Casing	

Sold To # : 344034

Ship To # : 344034

Quote # :

Sales Order # :

9466912

SUMMIT Version: 7.3.0021

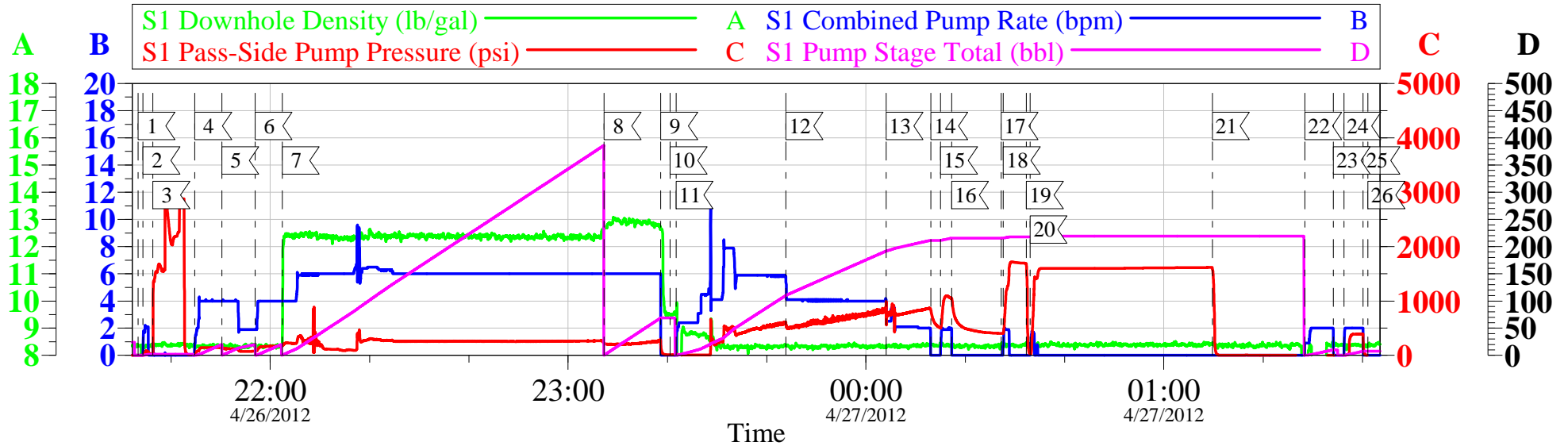
Friday, April 27, 2012 03:00:00

Pump Lead Cement	04/26/2012 22:02		6	444.9			300.0	1162 SKS, 12.3 LB/GAL, 2.15 FT3/SK, 11.83 GAL/SK. LOST RETURNS AT 190 BBLs GONE. RETURNS CAME BACK AT 252 BBLs GONE.
Pump Tail Cement	04/26/2012 23:07		6	59			182.0	150 SKS, 12.8 LB/GAL, 2.07 FT3/SK, 10.67 GAL/SK
Shutdown	04/26/2012 23:18							
Drop Top Plug	04/26/2012 23:20							VERIFY PLUG LAUNCHED. WITNESSED BY CO REP.
Pump Displacement	04/26/2012 23:21		8	207			430.0	FRESH H2O DISPLACEMENT. CEMENT TO SURFACE AT 41 BBLs GONE.
Slow Rate	04/26/2012 23:43		4	100			513.0	CO REP REQUE
Slow Rate	04/27/2012 00:04		2	193			710.0	SLOW RATE 10 BBLs PRIOR TO LANDING PLUG
Shutdown	04/27/2012 00:13			203				SHUT DOWN AT CALCULATED DISPLACEMENT
Pump Displacement	04/27/2012 00:15		2				855.0	CO REP DECIDED TO KEEP PUMPING
Shutdown	04/27/2012 00:17			205				
Pump Displacement	04/27/2012 00:27		2				1024. 0	
Bump Plug	04/27/2012 00:27		2	207			1185. 0	PLUG BUMPED 500 OVER.
Check Floats	04/27/2012 00:32							FLOATS HOLDING
Pressure Up	04/27/2012 00:33						1500. 0	TEST CASING AT 1500 PSI FOR 30 MIN.
Release Casing Pressure	04/27/2012 01:09							
Clean Lines	04/27/2012 01:36		3	10			388.0	PUMP SUGAR WATER DOWN PARACITE AND OPENED 6 BBLs GONE.
End Job	04/27/2012 01:41							TAGGED CEMENT 15' DOWN. USED 10 LBS SUGAR. NO DERRICK CHARGE, NO ADD HOURS
Pre-Rig Down Safety Meeting	04/27/2012 01:45							WITH ALL HES PERSONNEL

Activity Description	Date/Time	Cht #	Rate bbl/ min	Volume bbl		Pressure psig		Comments
				Stage	Total	Tubing	Casing	
Rig-Down Equipment	04/27/2012 02:00							
Pre-Convoy Safety Meeting	04/27/2012 03:00							WITH ALL HES PERSONNEL
Crew Leave Location	04/27/2012 03:30							LEFT LOCATION FREE OF DEBRESS
Comment	04/27/2012 03:30							THANK YOU FOR USING HALLIBURTON. DERICK CHASTAIN AND CREW

# OXY

## CC 697-05-57B SURFACE



1	START JOB	4/26/2012 21:33:23	2	FILL LINES	4/26/2012 21:34:22
3	TEST LINES	4/26/2012 21:36:20	4	PUMP H2O SPACER	4/26/2012 21:44:46
5	PUMP GEL SPACER	4/26/2012 21:50:13	6	PUMP H2O SPACER	4/26/2012 21:56:56
7	PUMP LEAD CEMENT	4/26/2012 22:02:24	8	PUMP TAIL CEMENT	4/26/2012 23:07:15
9	SHUT DOWN	4/26/2012 23:18:39	10	DROP PLUG	4/26/2012 23:20:32
11	PUMP DISPLACEMENT	4/26/2012 23:21:45	12	SLOW RATE	4/26/2012 23:43:53
13	SLOW RATE	4/27/2012 00:04:02	14	SHUT DOWN	4/27/2012 00:13:03
15	PUMP	4/27/2012 00:15:00	16	SHUT DOWN	4/27/2012 00:17:14
17	PUMP	4/27/2012 00:27:14	18	BUMP PLUG	4/27/2012 00:27:39
19	CHECK FLOATS	4/27/2012 00:32:19	20	CASING TEST	4/27/2012 00:33:04
21	RELEASE PRESSURE	4/27/2012 01:09:47	22	PUMP TO PIT	4/27/2012 01:28:24
23	SHUT DOWN	4/27/2012 01:34:07	24	CLEAR PARACITE	4/27/2012 01:36:16
25	SHUT DOWN	4/27/2012 01:40:07	26	END JOB	4/27/2012 01:41:07

Customer: OXY  
Well Description: CC 697-05-57B  
Customer Rep: ALEX VILLAGAS

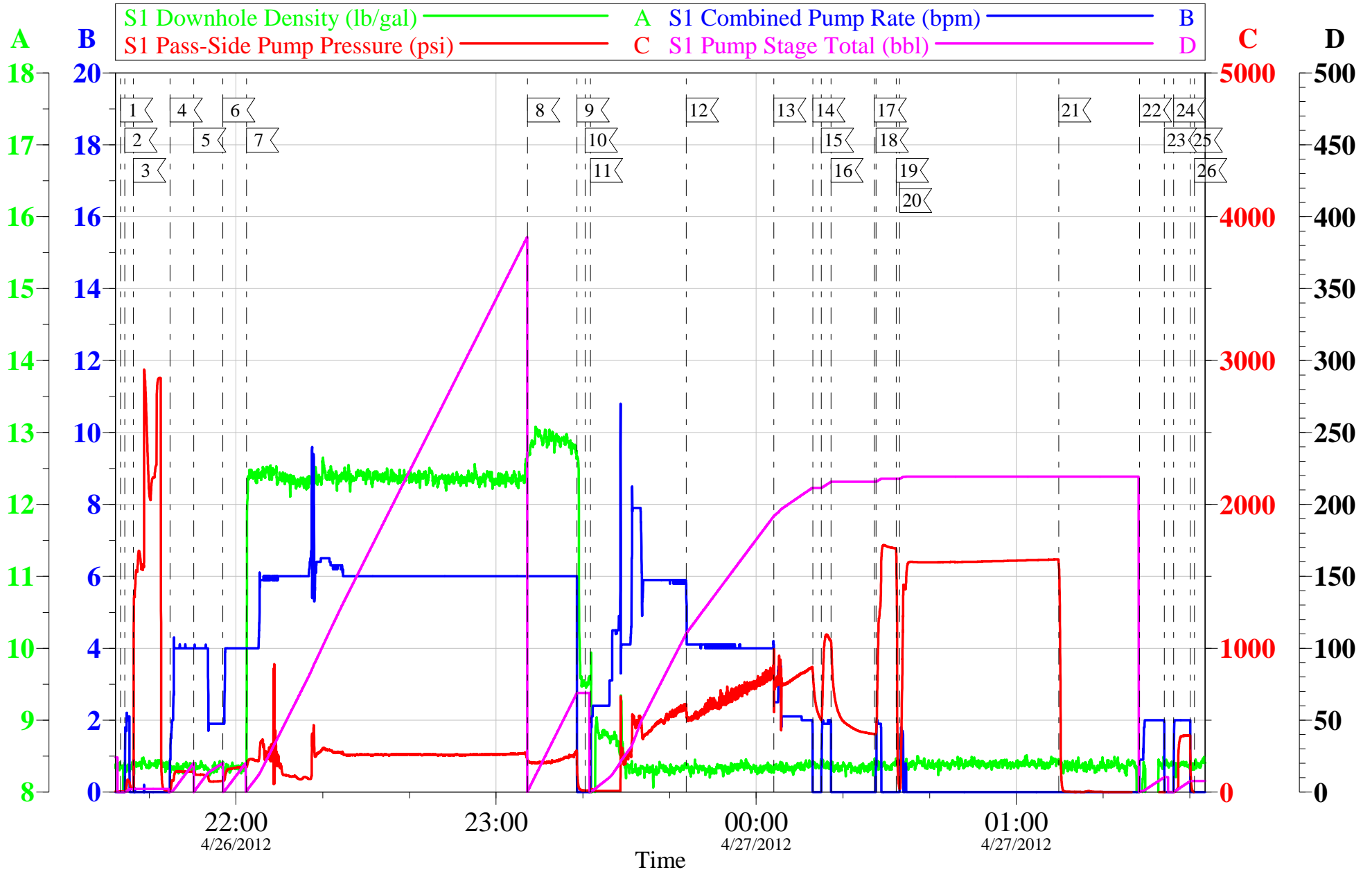
Job Date: 26-Apr-2012  
Job Type: SURFACE  
Service Supervisor: DERICK CHASTAIN

Sales Order #: 9466912  
ADC Used: YES  
Pump # 6 /Operator: RAY HARDRICK

OptiCem v6.4.10  
27-Apr-12 02:08

# OXY

## CC 697-05-57B SURFACE



Customer: OXY	Job Date: 26-Apr-2012	Sales Order #: 9466912
Well Description: CC 697-05-57B	Job Type: SURFACE	ADC Used: YES
Customer Rep: ALEX VILLAGAS	Service Supervisor: DERICK CHASTAIN	Pump # 6 /Operator: RAY HARDRICK

OptiCem v6.4.10  
27-Apr-12 02:08



# HALLIBURTON

## Water Analysis Report

Company: OXY  
Submitted by: DERICK CHASTAIN  
Attention: J. Trout  
Lease CC  
Well # 697-05-57B

Date: 4/26/2012  
Date Rec.: 4/26/2012  
S.O.# 9466912  
Job Type: SURFACE

Specific Gravity	<i>MAX</i>	<b>1</b>
pH	<i>8</i>	<b>7</b>
Potassium (K)	<i>5000</i>	<b>0</b> Mg / L
Calcium (Ca)	<i>500</i>	<b>200</b> Mg / L
Iron (FE2)	<i>300</i>	<b>0</b> Mg / L
Chlorides (Cl)	<i>3000</i>	<b>500</b> Mg / L
Sulfates (SO <sub>4</sub> )	<i>1500</i>	<b>0</b> Mg / L
Chlorine (Cl <sub>2</sub> )		<b>0</b> Mg / L
Temp	<i>40-80</i>	<b>50</b> Deg
Total Dissolved Solids		<b>210</b> Mg / L

Respectfully: DERICK CHASTAIN

Title: CEMENTING SUPERVISOR

Location: Grand Junction, CO

NOTICE:

This report is limited to the described sample tested. Any person using or relying on this report agrees that Halliburton shall not be liable for any loss or damage whether due to act or omission resulting from such report or its use

<b>Sales Order #:</b> 9466912	<b>Line Item:</b> 10	<b>Survey Conducted Date:</b> 4/27/2012
<b>Customer:</b> OXY GRAND JUNCTION EBUSINESS		<b>Job Type (BOM):</b> CMT SURFACE CASING BOM
<b>Customer Representative:</b> KEVIN CHANEY		<b>API / UWI: (leave blank if unknown)</b> 05-045-20955
<b>Well Name:</b> CC		<b>Well Number:</b> 697-05-73
<b>Well Type:</b> Development Well	<b>Well Country:</b> United States of America	
<b>H2S Present:</b>	<b>Well State:</b> Colorado	<b>Well County:</b> Garfield

Dear Customer,

We hope that you were satisfied with the service quality of this job performed by Halliburton. It is the aim of our management and service personnel to deliver equipment and service of a standard unmatched in the service sector of the energy industry.

Please take the time to let us know if our performance met with your satisfaction. Please be as critical as possible to ensure we constantly improve our service. Your comments are of great value to us and are intended for the exclusive use of Halliburton.

### CUSTOMER SATISFACTION SURVEY

CATEGORY	CUSTOMER SATISFACTION RESPONSE	
Survey Conducted Date	The date the survey was conducted	4/27/2012
Survey Interviewer	The survey interviewer is the person who initiated the survey.	DERICK CHASTAIN (HB23225)
Customer Participation	Did the customer participate in this survey? (Y/N)	Yes
Customer Representative	Enter the Customer representative name	KEVIN CHANEY
HSE	Was our HSE performance satisfactory? Circle Y or N	Yes
Equipment	Were you satisfied with our Equipment? Circle Y or N	Yes
Personnel	Were you satisfied with our people? Circle Y or N	Yes
Customer Comment	Customer's Comment	

<b>CUSTOMER SIGNATURE</b>
---------------------------

<b>Sales Order #:</b> 9466912	<b>Line Item:</b> 10	<b>Survey Conducted Date:</b> 4/27/2012
<b>Customer:</b> OXY GRAND JUNCTION EBUSINESS		<b>Job Type (BOM):</b> CMT SURFACE CASING BOM
<b>Customer Representative:</b> KEVIN CHANEY		<b>API / UWI: (leave blank if unknown)</b> 05-045-20955
<b>Well Name:</b> CC		<b>Well Number:</b> 697-05-73
<b>Well Type:</b> Development Well	<b>Well Country:</b> United States of America	
<b>H2S Present:</b>	<b>Well State:</b> Colorado	<b>Well County:</b> Garfield

*KEY PERFORMANCE INDICATORS*

General	
<b>Survey Conducted Date</b>	4/27/2012
The date the survey was conducted	

Cementing KPI Survey	
<b>Type of Job</b>	0
Select the type of job. (Cementing or Non-Cementing)	
<b>Select the Maximum Deviation range for this Job</b>	Vertical
What is the highest deviation for the job you just completed? This may not be the maximum well deviation.	
<b>Total Operating Time (hours)</b>	5
Total Operating Hours Including Rig-up, Pumping, Rig-down. Enter in decimal format.	
<b>HSE Incident, Accident, Injury</b>	No
HSE Incident, Accident, Injury. This should be recordable incidents only.	
<b>Was the job purpose achieved?</b>	Yes
Was the job delivered correctly as per customer agreed design?	
<b>Operating Hours (Pumping Hours)</b>	4
Total number of hours pumping fluid on this job. Enter in decimal format.	
<b>Customer Non-Productive Rig Time (hrs)</b>	0
Lost time due to Halliburton in the start, execution, or completion of an ordered service or product, or delays in a follow-on service. Enter in decimal format. 0 if none.	
<b>Type of Rig Classification Job Was Performed</b>	Drilling Rig (Portable)
Type Of Rig (classification) Job Was Performed On	
<b>Number Of JSAs Performed</b>	7
Number Of Jsas Performed	
<b>Number of Unplanned Shutdowns</b>	0
Unplanned shutdown is when injection stops for any period of time.	
<b>Was this a Primary Cement Job (Yes / No)</b>	Yes

<b>Sales Order #:</b> 9466912	<b>Line Item:</b> 10	<b>Survey Conducted Date:</b> 4/27/2012
<b>Customer:</b> OXY GRAND JUNCTION EBUSINESS		<b>Job Type (BOM):</b> CMT SURFACE CASING BOM
<b>Customer Representative:</b> KEVIN CHANEY		<b>API / UWI: (leave blank if unknown)</b> 05-045-20955
<b>Well Name:</b> CC		<b>Well Number:</b> 697-05-73
<b>Well Type:</b> Development Well	<b>Well Country:</b> United States of America	
<b>H2S Present:</b>	<b>Well State:</b> Colorado	<b>Well County:</b> Garfield

Primary Cement Job= Casing job, Liner job, or Tie-back job.	
<b>Did We Run Wiper Plugs?</b> Did We Run Top And Bottom Casing Wiper Plugs?	Top
<b>Mixing Density of Job Stayed in Designed Density Range (0-100%)</b> Density Range defined as +/- .20 ppg. Calculation: Total BBLs cement mixed at designed density divided by total BBLs of cement multiplied by 100	98
<b>Was Automated Density Control Used?</b> Was Automated Density Control (ADC) Used ?	Yes
<b>Pump Rate (percent) of Job Stayed At Designed Pump Rate</b> Pump Rate range defined as +/- 1bbl/min. Calculation: Total BBLs of fluid pumped at the designed rate divided by Total BBLs of fluid pumped, multiplied by 100	96
<b>Nbr of Remedial Sqz Jobs Rqd - Competition</b> Number Of Remedial Squeeze Jobs Required After Primary Job Performed By Competition	0
<b>Nbr of Remedial Plug Jobs Rqd - HES</b> Number Of Remedial Plug Jobs Needed After Primary Plug Pumped By HES	0
<b>Nbr of Remedial Sqz Jobs Rqd - HES</b> Number Of Remedial Squeeze Jobs Required After Primary Job Performed By HES	0