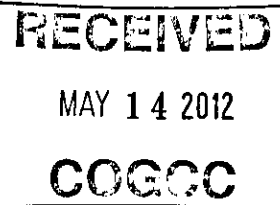




URTON

*Cement Job Summary 8/11*



*Form 5  
2288638*

---

## **WILLIAMS PRODUCTION RMT INC - EBUS**

---

GM 743-4  
GRAND VALLEY  
Garfield County , Colorado

**Cement Surface Casing**  
13-Sep-2011

**Job Site Documents**

2/11

RECEIVED

MAY 14 2012

HALLIBURTON

# Cementing Job Summary

The Road to Excellence Starts with Safety

Sold To #: 300721		Ship To #: 2874536		Quote #:		Sales Order #: 8424619					
Customer: WILLIAMS PRODUCTION RMT INC - EBUS				Customer Rep: Towers, Ron							
Well Name: GM		Well #: 743-4		API/UWI #: 05-0045-20912							
Field: GRAND VALLEY		City (SAP): PARACHUTE		County/Parish: Garfield		State: Colorado					
Lat: N 39.463 deg. OR N 39 deg. 27 min. 48.251 secs.				Long: W 108.108 deg. OR W -109 deg. 53 min. 31.51 secs.							
Contractor: NABORS		Rig/Platform Name/Num: NABORS 574									
Job Purpose: Cement Surface Casing											
Well Type: Development Well				Job Type: Cement Surface Casing							
Sales Person: MAYO, MARK				Srvc Supervisor: SLAUGHTER, JESSE MBU ID Emp #: 454315							
Job Personnel											
HES Emp Name	Exp Hrs	Emp #	HES Emp Name	Exp Hrs	Emp #	HES Emp Name	Exp Hrs				
BATH, KYLE Thomas	13	477632	RAMSEY, STANTON Michael	13	477609	SLAUGHTER, JESSE Dean	13				
YOUNG, JEREMY R	13	418013									
Equipment											
HES Unit #	Distance-1 way	HES Unit #	Distance-1 way	HES Unit #	Distance-1 way	HES Unit #	Distance-1 way				
10783493	60 mile	10822007	60 mile	10867304	60 mile	10951245	60 mile				
10998054	60 mile	11560046	60 mile	11562538	60 mile						
Job Hours											
Date	On Location Hours	Operating Hours	Date	On Location Hours	Operating Hours	Date	On Location Hours				
0913-2011	13	3									
TOTAL		Total is the sum of each column separately									
Job				Job Times							
Formation Name				Date	Time	Time Zone					
Formation Depth (MD) Top Bottom				Called Out	13 - Sep - 2011	00:00	MST				
Form Type BHST				On Location	13 - Sep - 2011	06:00	MST				
Job depth MD 2312. ft				Job Started	13 - Sep - 2011	16:24	MST				
Water Depth Wk Ht Above Floor 5. ft				Job Completed	13 - Sep - 2011	17:50	MST				
Perforation Depth (MD) From To				Departed Loc	13 - Sep - 2011	19:10	MST				
Well Data											
Description	New / Used	Max pressure psig	Size in	ID in	Weight lbm/ft	Thread	Grade	Top MD ft	Bottom MD ft	Top TVD ft	Bottom TVD ft
OPEN HOLE				13.5					2325.		
SURFACE CASING	Unknown		9.625	8.681	47.				2312.		
Sales/Rental/3 <sup>rd</sup> Party (HES)											
Description						Qty	Qty uom	Depth	Supplier		
PLUG,CMTG,TOP,9 5/8,HWE,8.16 MIN/9.06 MA						1	EA				
Tools and Accessories											
Type	Size	Qty	Make	Depth	Type	Size	Qty	Make	Depth	Type	Size
Guide Shoe					Packer					Top Plug	9.625
Float Shoe					Bridge Plug					Bottom Plug	
Float Collar					Retainer					SSR plug set	
Insert Float										Plug Container	9.625
Stage Tool										Centralizers	1
Miscellaneous Materials											
Gelling Agt		Conc		Surfactant		Conc		Acid Type		Qty	Conc %
Treatment Fld		Conc		Inhibitor		Conc		Sand Type		Size	Qty
Fluid Data											
Stage/Plug #: 1											

3/11

**HALLIBURTON****Cementing Job Summary**

Fluid #	Stage Type	Fluid Name	Qty	Qty uom	Mixing Density lbm/gal	Yield ft <sup>3</sup> /sk	Mix Fluid Gal/sk	Rate bbl/min	Total Mix Fluid Gal/sk
1	Water Spacer	FRESH WATER	20.00	bbl	8.33	.0	.0	4	
2	Lead Cement	VERSACEM (TM) SYSTEM (452010)	410.0	sacks	12.3	2.38	13.75	8	13.75
	13.75 Gal	FRESH WATER							
3	Tail Cement	VERSACEM (TM) SYSTEM (452010)	160.0	sacks	12.8	2.11	11.76	8	11.76
	11.76 Gal	FRESH WATER							
4	Displacement Fluid	FRESH WATER	165.9	bbl	8.33	.0	.0	10	
<b>Calculated Values</b>		<b>Pressures</b>		<b>Volumes</b>					
Displacement	165.9	Shut In: Instant		Lost Returns	NO	Cement Slurry	233.9	Pad	
Top Of Cement	SURFACE	5 Min		Cement Returns	30	Actual Displacement	165.9	Treatment	
Frac Gradient		15 Min		Spacers	20	Load and Breakdown		Total Job	419.8
<b>Rates</b>									
Circulating	7	Mixing	8	Displacement	10	Avg. Job	8.5		
Cement Left In Pipe	Amount	45 ft	Reason	Shoe Joint					
Frac Ring # 1 @	ID	Frac ring # 2 @	ID	Frac Ring # 3 @	ID	Frac Ring # 4 @	ID		
The Information Stated Herein Is Correct				Customer Representative Signature					

4/11

**HALLIBURTON****RECEIVED**

MAY 14 2012

**Cementing Job Log***The Road to Excellence Starts with Safety*

Sold To #: 300721	Ship To #: 2874536	Quote #:	Sales Order #: 8424619
Customer: WILLIAMS PRODUCTION RMT INC - EBUS	Customer Rep: Towers, Ron		
Well Name: GM	Well #: 743-4	API/UWI #: 05-0045-20912	
Field: GRAND VALLEY	City (SAP): PARACHUTE	County/Parish: Garfield	State: Colorado
Legal Description:			
Lat: N 39.463 deg. OR N 39 deg. 27 min. 48.251 secs.		Long: W 108.108 deg. OR W -109 deg. 53 min. 31.51 secs.	
Contractor: NABORS	Rig/Platform Name/Num: NABORS 574		
Job Purpose: Cement Surface Casing	Ticket Amount:		
Well Type: Development Well	Job Type: Cement Surface Casing		
Sales Person: MAYO, MARK	Srv Supervisor: SLAUGHTER, JESSE	MBU ID Emp #: 454315	

Activity Description	Date/Time	Cht #	Rate bbl/ min	Volume bbl		Pressure psig		Comments
				Stage	Total	Tubing	Casing	
Call Out	09/13/2011 00:00							TD 2325 FT, TP 2312 FT, SHOE 45 FT, CSG 9 5/8 47 LB/FT, HOLE 13 1/2, MUD WT 10.4 PPG
Pre-Convoy Safety Meeting	09/13/2011 02:50							WITH ALL HES PERSONNEL
Crew Leave Yard	09/13/2011 03:00							
Arrive At Loc	09/13/2011 06:00							RIG WAS PULLING DRILL PIPE UPON HES ARRIVAL
Assessment Of Location Safety Meeting	09/13/2011 14:10							WITH ALL HES PERSONNEL
Other	09/13/2011 14:30							SPOT EQUIPMENT
Pre-Rig Up Safety Meeting	09/13/2011 14:50							WITH ALL HES PERSONNEL
Rig-Up Equipment	09/13/2011 15:00							
Pre-Job Safety Meeting	09/13/2011 16:00							WITH ALL PERSONNEL ON LOCATION
Start Job	09/13/2011 16:24							
Other	09/13/2011 16:24		2	2				FILL LINES WITH FRESH WATER
Test Lines	09/13/2011 16:26							TESTED LINES TO 3639 PSI PRESSURE HOLDING
Pump Spacer 1	09/13/2011 16:34		4	20			87.0	FRESH WATER
Pump Lead Cement	09/13/2011 16:42		8	173.8			275.0	410 SKS AT 12.3 PPG, 2.38 FT3/SK, 13.75 GAL/SK
Activity Description	Date/Time	Cht	Rate bbl/ min	Volume bbl		Pressure psig		Comments

Sold To #: 300721

Ship To #: 2874536

Quote #:

Sales Order #: 8424619

SUMMIT Version: 7.2.27

Thursday, September 15, 2011 03:30:00

5/11

**HALLIBURTON*****Cementing Job Log***

		#	Stage	Total	Tubing	Casing	
Pump Tail Cement	09/13/2011 17:08		8	60.1		285.0	160 SKS AT 12.8 PPG, 2.11 FT3/SK, 11.76 GAL/SK
Shutdown	09/13/2011 17:19						
Drop Top Plug	09/13/2011 17:21						PLUG LAUNCHED
Pump Displacement	09/13/2011 17:23		10	155.9		727.0	FRESH WATER
Slow Rate	09/13/2011 17:42		2	10		495.0	SLOW RATE 10 BBLS PRIOR TO CALCULATED DISPLACEMENT
Bump Plug	09/13/2011 17:46		2		165.9	995.0	PLUG BUMPED
Check Floats	09/13/2011 17:48						FLOATS HOLDING. HES RETURNED 1/2 BBL H2O TO PUMP
End Job	09/13/2011 17:50						PIPE WAS RECIPROCATED DURING JOB, GOOD CIRCULATION THROUGHOUT JOB. HES RETURNED 30 BBL CEMENT TO SURFACE
Pre-Rig Down Safety Meeting	09/13/2011 18:00						WITH ALL HES PERSONNEL
Rig-Down Equipment	09/13/2011 18:10						
Pre-Convoy Safety Meeting	09/13/2011 19:00						WITH ALL HES PERSONNEL
Crew Leave Location	09/13/2011 19:10						
Comment	09/13/2011 19:11						THANK YOU FOR USING HALLIBURTON CEMENT DEPARTMENT. JESSE SLAUGHTER AND CREW.

Sold To # : 300721

Ship To # :2874536

Quote # :

Sales Order # :

8424619

SUMMIT Version: 7.2.27

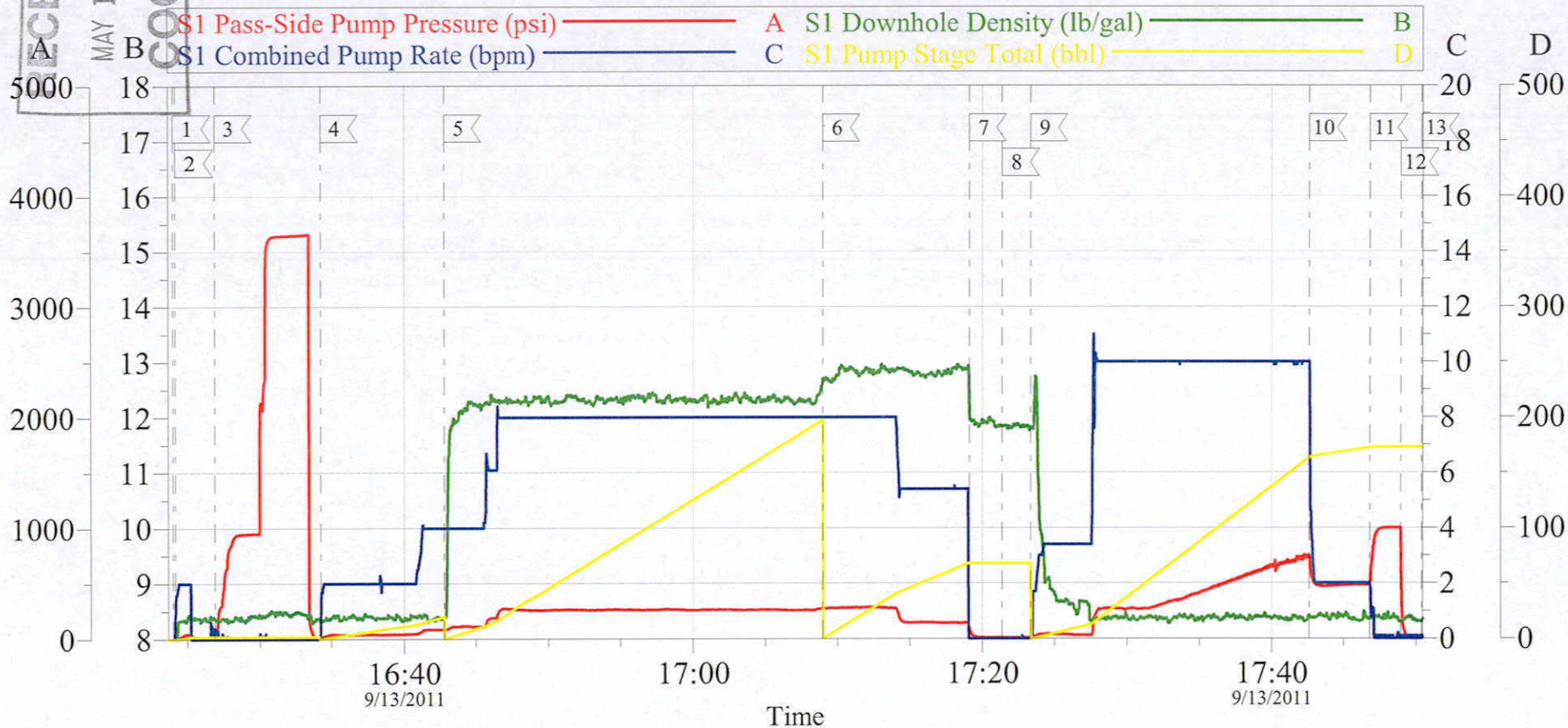
Thursday, September 15, 2011 03:30:00

RECEIVED  
MAY 14 2012  
COGCC

# WILLIAMS

## GM 743-4, 9 5/8 SURFACE

6/11



### Local Event Log

1 START JOB	16:24:02	2 PRIME LINES	16:24:12	3 TEST LINES	16:26:53
4 PUMP H2O SPACER	16:34:15	5 PUMP LEAD CEMENT	16:42:46	6 PUMP TAIL CEMENT	17:08:59
7 SHUTDOWN	17:19:05	8 DROP TOP PLUG	17:21:23	9 PUMP DISPLACEMENT	17:23:21
10 SLOW RATE	17:42:37	11 BUMP PLUG	17:46:48	12 CHECK FLOATS	17:48:56
13 END JOB	17:50:21				

Customer: WILLIAMS  
Well Description: GM 743-4  
Customer Rep: RON TOWERS

Job Date: 13-Sep-2011  
Job Type: SURFACE  
Service Supervisor: JESSE SLAUGHTER

Sales Order #: 8424619  
ADC Used: YES  
Pump # / Operator: 5/KYLE BATH

OptiCem v6.4.10  
13-Sep-11 18:01

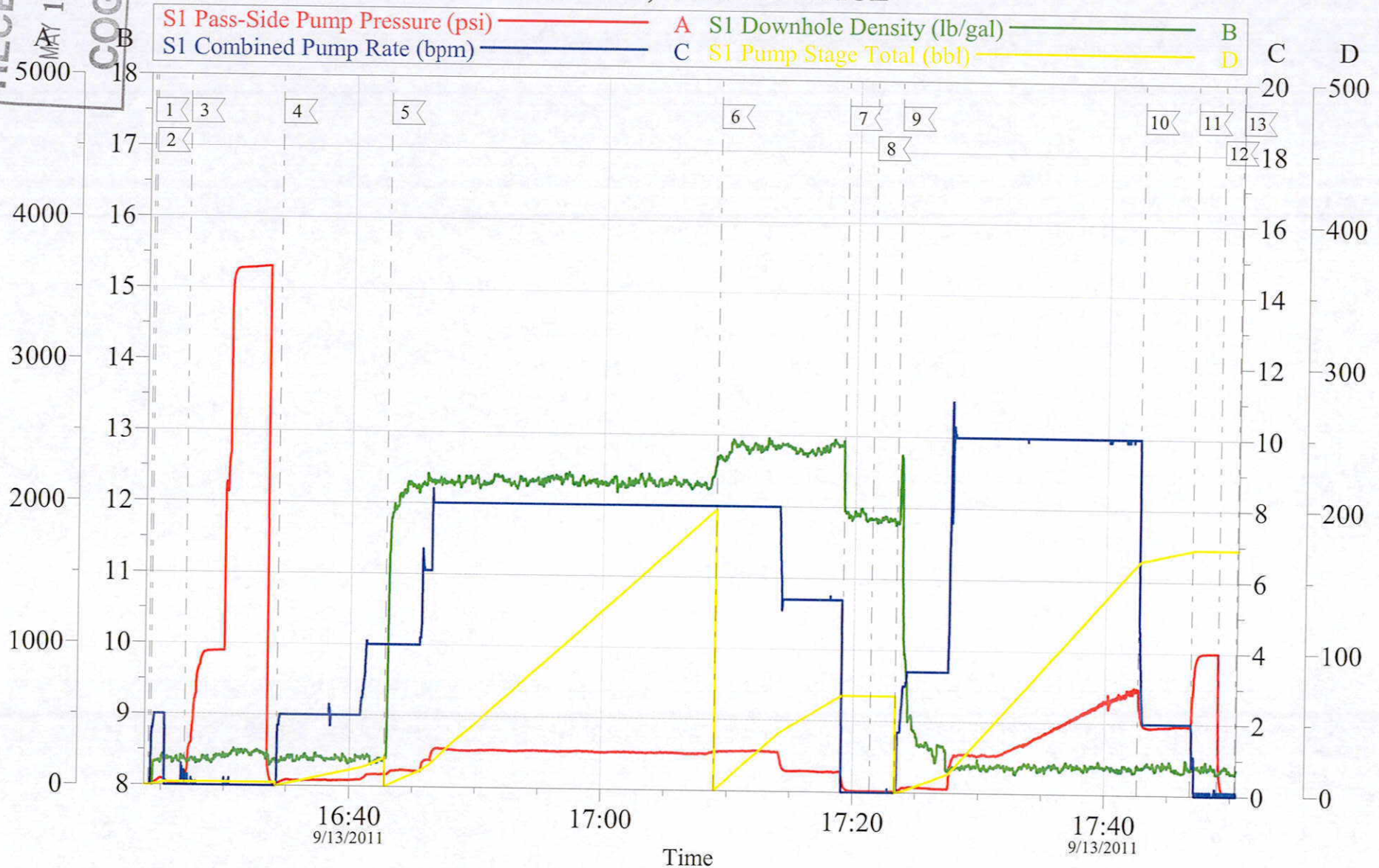


RECEIVED  
MAY 14 2012  
COGCC

# WILLIAMS

## GM 743-4, 9 5/8 SURFACE

7/11



Customer: WILLIAMS	Job Date: 13-Sep-2011	Sales Order #: 8424619
Well Description: GM 743-4	Job Type: SURFACE	ADC Used: YES
Customer Rep: RON TOWERS	Service Supervisor: JESSE SLAUGHTER	Pump # / Operator: 5/KYLE BATH

OptiCem v6.4.10  
13-Sep-11 18:00

8/11

RECEIVED

MAY 14 2012

CCGCC

**HALLIBURTON****Water Analysis Report**Company: WILLIAMS PRODUCTIONSubmitted by: JESSE SLAUGHTERAttention: LABLease GMWell # 743-4Date: 9/13/2011Date Rec.: S.O.# 8424619Job Type: SURFACE

Specific Gravity	MAX	1
pH	8	6
Potassium (K)	5000	250 Mg / L
Calcium (Ca)	500	120 Mg / L
Iron (FE2)	300	3 Mg / L
Chlorides (Cl)	3000	0 Mg / L
Sulfates (SO <sub>4</sub> )	1500	UNDER 200 Mg / L
Chlorine (Cl <sub>2</sub> )		0 Mg / L
Temp	40-80	55 Deg
Total Dissolved Solids		220 Mg / L

Respectfully: JESSE SLAUGHTERTitle: CEMENTING SUPERVISORLocation: Grand Junction, CO

## NOTICE:

This report is limited to the described sample tested. Any person using or relying on this report agrees that Halliburton shall not be liable for any loss or damage whether due to act or omission resulting from such report or its



# HALLIBURTON

9/11  
**CUSTOMER SURVEY** MAY 14 2012

RECEIVED

COCOC

<b>Sales Order #:</b> 8424619	<b>Line Item:</b> 10	<b>Survey Conducted Date:</b> 9/13/2011
<b>Customer:</b> WILLIAMS PRODUCTION RMT INC - EBUS		<b>Job Type (BOM):</b> CMT SURFACE CASING BOM
<b>Customer Representative:</b> RON TOWERS		<b>API / UWI: (leave blank if unknown)</b> 05-0045-20912
<b>Well Name:</b> GM		<b>Well Number:</b> 743-4
<b>Well Type:</b> Development Well	<b>Well Country:</b> United States of America	
<b>H2S Present:</b>	<b>Well State:</b> Colorado	<b>Well County:</b> Garfield

Dear Customer,

We hope that you were satisfied with the service quality of this job performed by Halliburton. It is the aim of our management and service personnel to deliver equipment and service of a standard unmatched in the service sector of the energy industry.

Please take the time to let us know if our performance met with your satisfaction. Please be as critical as possible to ensure we constantly improve our service. Your comments are of great value to us and are intended for the exclusive use of Halliburton.

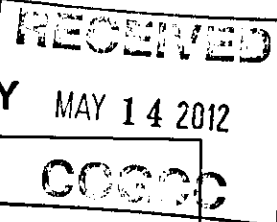
## CUSTOMER SATISFACTION SURVEY

CATEGORY	CUSTOMER SATISFACTION RESPONSE	
Survey Conducted Date	The date the survey was conducted	9/13/2011
Survey Interviewer	The survey interviewer is the person who initiated the survey.	JESSE SLAUGHTER (HB21762)
Customer Participation	Did the customer participate in this survey? (Y/N)	Yes
Customer Representative	Enter the Customer representative name	RON TOWERS
HSE	Was our HSE performance satisfactory? Circle Y or N	Yes
Equipment	Were you satisfied with our Equipment? Circle Y or N	Yes
Personnel	Were you satisfied with our people? Circle Y or N	Yes
Customer Comment	Customer's Comment	
Job DVA	Did we provide Job DVA above our normal service today? Circle Y or N	No
Time	Please enter hours in decimal format to nearest quarter hour.	
Other	Enter short text for other efficiencies gained.	
Customer Initials	Customer's Initials	
Please provide details	Please describe how the job efficiencies were gained.	

CUSTOMER SIGNATURE

KPI Number: HB1301820110825091752K301  
EJCS Number: HB1301820110825091752E301

Page 1 of 3  
9/13/2011



<b>Sales Order #:</b> 8424619	<b>Line Item:</b> 10	<b>Survey Conducted Date:</b> 9/13/2011
<b>Customer:</b> WILLIAMS PRODUCTION RMT INC - EBUS		<b>Job Type (BOM):</b> CMT SURFACE CASING BOM
<b>Customer Representative:</b> RON TOWERS		<b>API / UWI: (leave blank if unknown)</b> 05-0045-20912
<b>Well Name:</b> GM		<b>Well Number:</b> 743-4
<b>Well Type:</b> Development Well	<b>Well Country:</b> United States of America	
<b>H2S Present:</b>	<b>Well State:</b> Colorado	<b>Well County:</b> Garfield

### KEY PERFORMANCE INDICATORS

<b>General</b>	
<b>Survey Conducted Date</b> The date the survey was conducted	9/13/2011

<b>Cementing KPI Survey</b>	
<b>Type of Job</b> Select the type of job. (Cementing or Non-Cementing)	0
<b>Select the Maximum Deviation range for this Job</b> What is the highest deviation for the job you just completed? This may not be the maximum well deviation.	Vertical
<b>Total Operating Time (hours)</b> Total Operating Hours Including Rig-up, Pumping, Rig-down. Enter in decimal format.	3
<b>HSE Incident, Accident, Injury</b> HSE Incident, Accident, Injury. This should be recordable incidents only.	No
<b>Was the job purpose achieved?</b> Was the job delivered correctly as per customer agreed design?	Yes
<b>Operating Hours (Pumping Hours)</b> Total number of hours pumping fluid on this job. Enter in decimal format.	1.5
<b>Customer Non-Productive Rig Time (hrs)</b> Lost time due to Halliburton in the start, execution, or completion of an ordered service or product, or delays in a follow-on service. Enter in decimal format. 0 if none.	0
<b>Type of Rig Classification Job Was Performed</b> Type Of Rig (classification) Job Was Performed On	Drilling Rig (Portable)
<b>Number Of JSAs Performed</b> Number Of Jsas Performed	6
<b>Number of Unplanned Shutdowns</b> Unplanned shutdown is when injection stops for any period of time.	0
<b>Was this a Primary Cement Job (Yes / No)</b>	Yes

# HALLIBURTON

## CUSTOMER SURVEY

**RECEIVED**

MAY 14 2012

**COGIC**

<b>Sales Order #:</b> 8424619	<b>Line Item:</b> 10	<b>Survey Conducted Date:</b> 9/13/2011
<b>Customer:</b> WILLIAMS PRODUCTION RMT INC - EBUS		<b>Job Type (BOM):</b> CMT SURFACE CASING BOM
<b>Customer Representative:</b> RON TOWERS		<b>API / UWI: (leave blank if unknown)</b> 05-0045-20912
<b>Well Name:</b> GM		<b>Well Number:</b> 743-4
<b>Well Type:</b> Development Well	<b>Well Country:</b> United States of America	
<b>H2S Present:</b>	<b>Well State:</b> Colorado	<b>Well County:</b> Garfield

Primary Cement Job= Casing job, Liner job, or Tie-back job.	
<b>Did We Run Wiper Plugs?</b>	Top
Did We Run Top And Bottom Casing Wiper Plugs?	
<b>Mixing Density of Job Stayed in Designed Density Range (0-100%)</b>	98
Density Range defined as +/- .20 ppg. Calculation: Total BBLs cement mixed at designed density divided by total BBLs of cement multiplied by 100	
<b>Was Automated Density Control Used?</b>	Yes
Was Automated Density Control (ADC) Used ?	
<b>Pump Rate (percent) of Job Stayed At Designed Pump Rate</b>	98
Pump Rate range defined as +/- 1bbl/min. Calculation: Total BBLs of fluid pumped at the designed rate divided by Total BBLs of fluid pumped, multiplied by 100	
<b>Nbr of Remedial Sqz Jobs Rqd - Competition</b>	0
Number Of Remedial Squeeze Jobs Required After Primary Job Performed By Competition	
<b>Nbr of Remedial Plug Jobs Rqd - HES</b>	0
Number Of Remedial Plug Jobs Needed After Primary Plug Pumped By HES	
<b>Nbr of Remedial Sqz Jobs Rqd - HES</b>	0
Number Of Remedial Squeeze Jobs Required After Primary Job Performed By HES	