

---

**WILLIAMS PRODUCTION RMT INC - EBUS**

---

**RWF 43-31  
Rulison  
Garfield County , Colorado**

**Cement Surface Casing**  
**29-Oct-2011**

**Post Job Report**

## The Road to Excellence Starts with Safety

Sold To #: 300721	Ship To #: 2884185	Quote #:	Sales Order #: 8542165
Customer: WILLIAMS PRODUCTION RMT INC - EBUS	Customer Rep: Moore, Frank		
Well Name: RWF	Well #: 43-31	API/UWI #: 05-045-19786	
Field: Rulison	City (SAP): RIFLE	County/Parish: Garfield	State: Colorado
Lat: N 39.475 deg. OR N 39 deg. 28 min. 30.824 secs.	Long: W 107.929 deg. OR W -108 deg. 4 min. 14.513 secs.		
Contractor: Nabors Industries LTD.	Rig/Platform Name/Num: Nabors 573		
Job Purpose: Cement Surface Casing			
Well Type: Development Well	Job Type: Cement Surface Casing		
Sales Person: KOHL, KYLE	Srv Supervisor: TRIPLETT, MICHEAL	MBU ID Emp #: 447908	

## Job Personnel

HES Emp Name	Exp Hrs	Emp #	HES Emp Name	Exp Hrs	Emp #	HES Emp Name	Exp Hrs	Emp #
Otoolt, Shawn	4.5	496661	SILVERTHORN, AARON Jacob	4.5	491305	SIMINEO, JEROD M	4.5	479954
TRIPLETT, MICHEAL Anthony	4.5	447908						

## Equipment

HES Unit #	Distance-1 way	HES Unit #	Distance-1 way	HES Unit #	Distance-1 way	HES Unit #	Distance-1 way
10722398	60 mile	10784064	60 mile	10951247	60 mile	11006314	60 mile
11139330	60 mile	11560046	60 mile	11562538	60 mile		

## Job Hours

Date	On Location Hours	Operating Hours	Date	On Location Hours	Operating Hours	Date	On Location Hours	Operating Hours
10/29/2011	4.5	2						

TOTAL	Total is the sum of each column separately							
-------	--	--	--	--	--	--	--	--

## Job

Formation Name	Top	Bottom	Called Out	Date	Time	Time Zone
Formation Depth (MD)			On Location	29 - Oct - 2011	07:30	MST
Form Type		BHST	Job Started	29 - Oct - 2011	09:13	MST
Job depth MD	2745. ft	Job Depth TVD	2745. ft	Job Completed	29 - Oct - 2011	10:53
Water Depth		Wk Ht Above Floor	4. ft	Departed Loc	29 - Oct - 2011	12:00
Perforation Depth (MD)	From	To				

## Well Data

Description	New / Used	Max pressure psig	Size in	ID in	Weight lbm/ft	Thread	Grade	Top MD ft	Bottom MD ft	Top TVD ft	Bottom TVD ft
13 1/2" Open Hole				13.5				.	2745		
9 5/8" Surface Casing	New		9.625	9.001	32.3	8-ROUND	H-40	.	2734		

Sales/Rental/3<sup>rd</sup> Party (HES)

Description	Qty	Qty uom	Depth	Supplier
PLUG,CMTG,TOP,9 5/8,HWE,8.16 MIN/9.06 MA	1	EA		

## Tools and Accessories

Type	Size	Qty	Make	Depth	Type	Size	Qty	Make	Depth	Type	Size	Qty	Make
Guide Shoe					Packer					Top Plug			
Float Shoe					Bridge Plug					Bottom Plug			
Float Collar					Retainer					SSR plug set			
Insert Float										Plug Container			
Stage Tool										Centralizers			

## Miscellaneous Materials

Gelling Agt	Conc	Surfactant	Conc	Acid Type	Qty	Conc	%
Treatment Fld	Conc	Inhibitor	Conc	Sand Type	Size	Qty	

## Fluid Data

Stage/Plug #: 1

Fluid #	Stage Type	Fluid Name	Qty	Qty uom	Mixing Density lbm/gal	Yield ft <sup>3</sup> /sk	Mix Fluid Gal/sk	Rate bbl/min	Total Mix Fluid Gal/sk
1	Water Spacer		20.00	bbl	8.34			4.0	
2	VersaCem Lead Cement	VERSACEM (TM) SYSTEM (452010)	435.0	sacks	12.3	2.38	13.75	8.0	13.75
	13.75 Gal	FRESH WATER							
3	VersaCem Tail Cement	VERSACEM (TM) SYSTEM (452010)	160.0	sacks	12.8	2.11	11.75	8.0	11.75
	11.75 Gal	FRESH WATER							
4	Displacement Fluid		210.00	bbl	8.34	.0	.0	10.0	
<b>Calculated Values</b>		<b>Pressures</b>		<b>Volumes</b>					
Displacement	211.8	Shut In: Instant		Lost Returns	0	Cement Slurry	245	Pad	
Top Of Cement	SURFACE	5 Min		Cement Returns	30	Actual Displacement		Treatment	
Frac Gradient		15 Min		Spacers	20	Load and Breakdown		Total Job	440
<b>Rates</b>									
Circulating	16	Mixing	8	Displacement	10	Avg. Job			12
Cement Left In Pipe	Amount	42.22 ft	Reason	Shoe Joint					
Frac Ring # 1 @	ID		Frac ring # 2 @	ID		Frac Ring # 3 @	ID		Frac Ring # 4 @
The Information Stated Herein Is Correct				Customer Representative Signature					

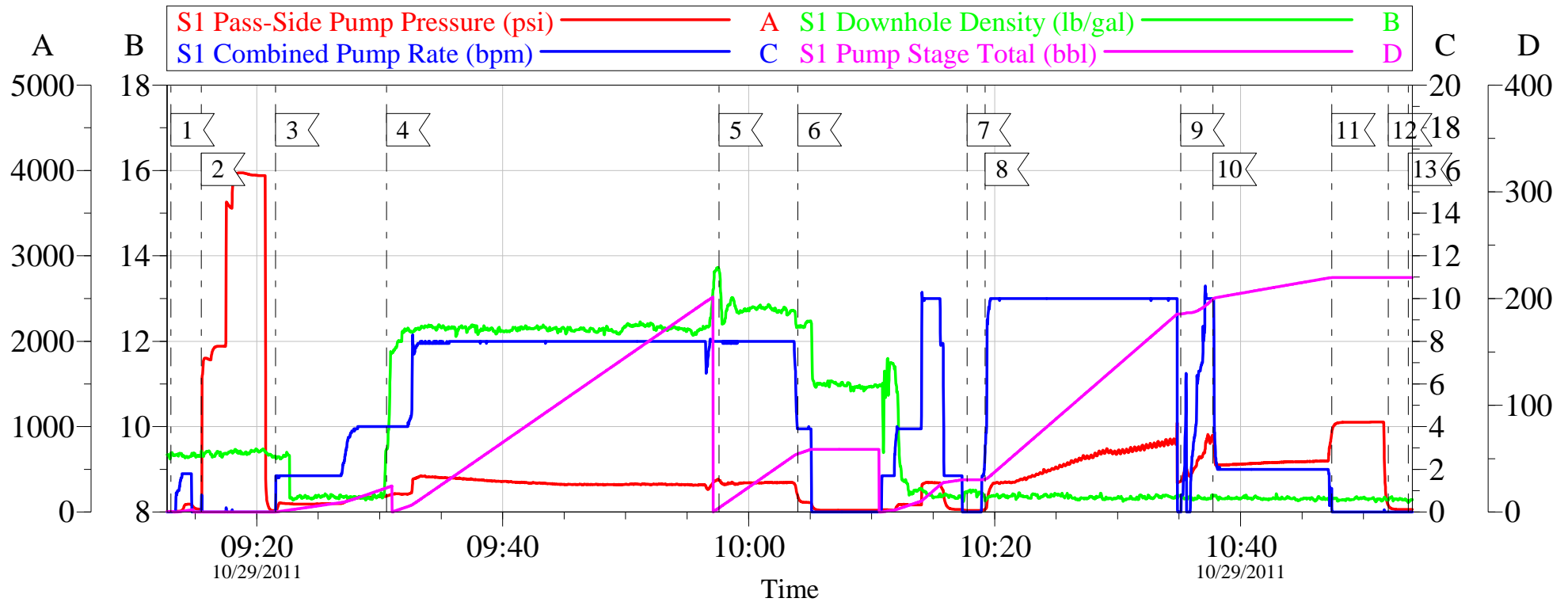
*The Road to Excellence Starts with Safety*

<b>Sold To #:</b> 300721	<b>Ship To #:</b> 2884185	<b>Quote #:</b>	<b>Sales Order #:</b> 8542165
<b>Customer:</b> WILLIAMS PRODUCTION RMT INC - EBUS		<b>Customer Rep:</b> Moore, Frank	
<b>Well Name:</b> RWF		<b>Well #:</b> 43-31	<b>API/UWI #:</b> 05-045-19786
<b>Field:</b> Rulison	<b>City (SAP):</b> RIFLE	<b>County/Parish:</b> Garfield	<b>State:</b> Colorado
<b>Legal Description:</b>			
<b>Lat:</b> N 39.475 deg. OR N 39 deg. 28 min. 30.824 secs.		<b>Long:</b> W 107.929 deg. OR W -108 deg. 4 min. 14.513 secs.	
<b>Contractor:</b> Nabors Industries LTD.		<b>Rig/Platform Name/Num:</b> Nabors 573	
<b>Job Purpose:</b> Cement Surface Casing			<b>Ticket Amount:</b>
<b>Well Type:</b> Development Well		<b>Job Type:</b> Cement Surface Casing	
<b>Sales Person:</b> KOHL, KYLE		<b>Srvc Supervisor:</b> TRIPLETT, MICHEAL	<b>MBU ID Emp #:</b> 447908

Activity Description	Date/Time	Cht #	Rate bbl/min	Volume bbl		Pressure psig		Comments
				Stage	Total	Tubing	Casing	
Call Out	10/29/2011 04:00							
Pre-Convoy Safety Meeting	10/29/2011 05:55							
Crew Leave Yard	10/29/2011 06:00							
Arrive At Loc	10/29/2011 07:30							RIG WAS WAITING ON BOTTOM.
Assessment Of Location Safety Meeting	10/29/2011 07:35							
Other	10/29/2011 07:40							SPOT EQUIPMENT, 1 RCM PUMP TRUCK, 2 660'S
Pre-Rig Up Safety Meeting	10/29/2011 07:50							GO OVER JSA AND HAVE CREW SIGN
Rig-Up Equipment	10/29/2011 07:55							
Pre-Job Safety Meeting	10/29/2011 08:30							GO OVER JOB PROCEDURES AND SAFETY INFORMATION
Start Job	10/29/2011 09:13							TD:2745', TP:2734, SJ:42.22', MW:10.6, CASING: 9.625 32.3#, OH: 13.5"
Test Lines	10/29/2011 09:15						3900	PRESSURE TEST PUMPS AND LINES. STARTED AT 3985 PSI ENDED AT 3952 PSI, LOST 33 PSI IN TWO MINUTES.
Pump Spacer	10/29/2011 09:21		4	20			107.0	FRESH WATER
Pump Lead Cement	10/29/2011 09:30		8	184.4			420.0	435 SACKS MIXED @ 12.3 PPG, 2.38 YIELD, 13.75 GALS/SACK

Activity Description	Date/Time	Cht #	Rate bbl/min	Volume bbl		Pressure psig		Comments
				Stage	Total	Tubing	Casing	
Pump Tail Cement	10/29/2011 09:57		8	60.1			357.0	160 SACKS MIXED @ 12.8, 2.11 YIELD, 11.75 GAL/SACK
Shutdown	10/29/2011 10:04							
Drop Top Plug	10/29/2011 10:17							VERIFY PLUG LEFT
Pump Displacement	10/29/2011 10:19		10	211.8			810.0	FRESHWATER, WASHED UP ON TOP OF PLUG PER COMPANY REP. KICK OUT WENT WHEN PUMPING DISPLACEMENT.
Slow Rate	10/29/2011 10:37		2	201.8			570.0	SLOWED RATE LAST 10BBLs OF DISPLACEMENT
Bump Plug	10/29/2011 10:47			211.8			620.0	BUMP PLUG AND WENT 500PSI OVER
Check Floats	10/29/2011 10:52							FLOATS HELD
End Job	10/29/2011 10:53							HAD GOOD CIRCULATION THROUGHOUT JOB, GOT CEMENT RETURNS WITH 180 BBLS OF DISPLACEMENT AWAY, GOT 30 BBLS OF CEMENT TO SURFACE. 80 #S OF SUGAR USED, NO ADDITIONAL HOURS ADDED TO TICKET.
Post-Job Safety Meeting (Pre Rig-Down)	10/29/2011 10:55							
Rig-Down Equipment	10/29/2011 11:00							
Pre-Convoy Safety Meeting	10/29/2011 11:55							
Crew Leave Location	10/29/2011 12:00							THANKS FOR USING HALLIBURTON MIKE TRIPLETT AND CREW

# WILLIAMS SURFACE RWF 43-31



## Local Event Log

1	START JOB	09:13:01	2	PRESSURE TEST	09:15:29
3	START FRESHWATER SPACER	09:21:32	4	START LEAD CEMENT	09:30:33
5	START TAIL CEMENT	09:57:35	6	SHUTDOWN	10:04:00
7	DROP PLUG	10:17:46	8	START DISPLACEMENT	10:19:14
9	SEE JOB LOG	10:35:08	10	SLOWRATE	10:37:45
11	BUMP PLUG	10:47:25	12	CHECK FLOATS	10:52:01
13	END JOB	10:53:38			

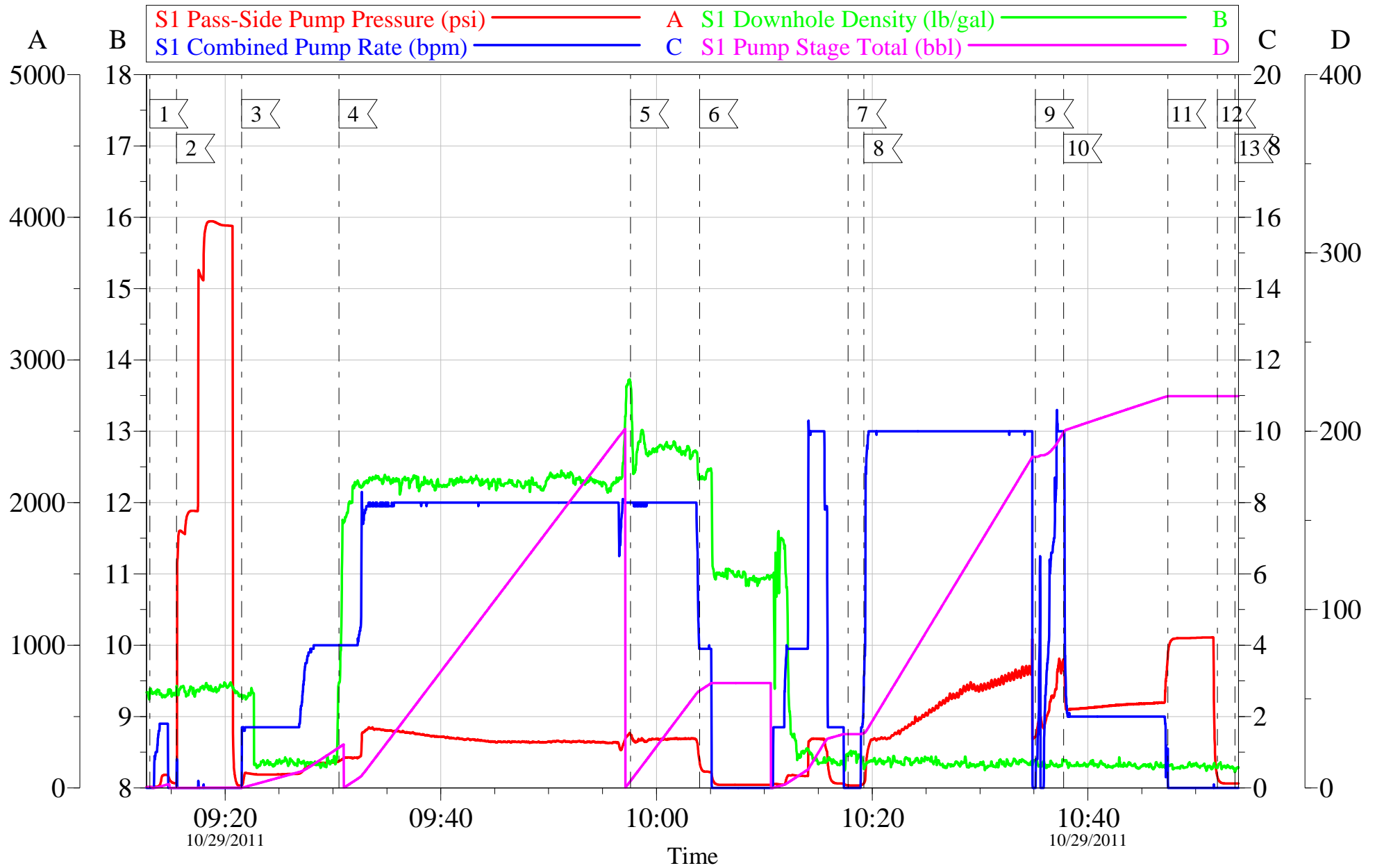
Customer: WILLIAMS  
Well Description: RWF 43-31  
ADC USED: YES

Job Date: 29-Oct-2011  
JOB TYPE: SURFACE  
SERVICE SUPERVISOR: MIKE TRIPLETT

Sales Order #: 8542165  
COMPANY REP: FRANK MOORE  
ELITE/OPERATER 5/ JEROD SIMINEO

OptiCem v6.4.9  
29-Oct-11 11:05

# WILLIAMS SURFACE RWF 43-31



Customer: WILLIAMS	Job Date: 29-Oct-2011	Sales Order #: 8542165
Well Description: RWF 43-31	JOB TYPE: SURFACE	COMPANY REP: FRANK MOORE
ADC USED: YES	SERVICE SUPERVISOR: MIKE TRIPLETT	ELITE/OPERATER 5/ JEROD SIMINEO

OptiCem v6.4.9  
29-Oct-11 11:05

# HALLIBURTON

## Water Analysis Report

Company: williams

Submitted by: MIKE TRIPLETT

Attention: lab

Lease: rwf

Well #: 43-31

Date: 10/29/2011

Date Rec.: 10/29/2011

S.O.#: 8542165

Job Type: SURFACE

Specific Gravity	<i>MAX</i>	<i>1</i>
pH	<i>8</i>	<i>7</i>
Potassium (K)	<i>5000</i>	<i>250</i> Mg / L
Calcium (Ca)	<i>500</i>	<i>0</i> Mg / L
Iron (FE2)	<i>300</i>	<i>0</i> Mg / L
Chlorides (Cl)	<i>3000</i>	<i>450</i> Mg / L
Sulfates (SO <sub>4</sub> )	<i>1500</i>	<i>-200</i> Mg / L
Chlorine (Cl <sub>2</sub> )		<i>0</i> Mg / L
Temp	<i>40-80</i>	<i>45</i> Deg
Total Dissolved Solids		<i>80</i> Mg / L

Respectfully: MIKE TRIPLETT

Title: CEMENTING SUPERVISOR

Location: Grand Junction, CO

NOTICE: This report is limited to the described sample tested. Any person using or relying on this report agrees that Halliburton shall not be liable for any loss or damage whether due to act or omission resulting from such report or



<b>Sales Order #:</b> 8542165	<b>Line Item:</b> 10	<b>Survey Conducted Date:</b> 10/29/2011
<b>Customer:</b> WILLIAMS PRODUCTION RMT INC - EBUS		<b>Job Type (BOM):</b> CMT SURFACE CASING BOM
<b>Customer Representative:</b> FRANK MOORE		<b>API / UWI: (leave blank if unknown)</b> 05-045-19786
<b>Well Name:</b> RWF		<b>Well Number:</b> 43-31
<b>Well Type:</b> Development Well	<b>Well Country:</b> United States of America	
<b>H2S Present:</b> No	<b>Well State:</b> Colorado	<b>Well County:</b> Garfield

Dear Customer,

We hope that you were satisfied with the service quality of this job performed by Halliburton. It is the aim of our management and service personnel to deliver equipment and service of a standard unmatched in the service sector of the energy industry.

Please take the time to let us know if our performance met with your satisfaction. Please be as critical as possible to ensure we constantly improve our service. Your comments are of great value to us and are intended for the exclusive use of Halliburton.

### CUSTOMER SATISFACTION SURVEY

CATEGORY	CUSTOMER SATISFACTION RESPONSE	
Survey Conducted Date	The date the survey was conducted	10/29/2011
Survey Interviewer	The survey interviewer is the person who initiated the survey.	MICHEAL TRIPLETT (HB15721)
Customer Participation	Did the customer participate in this survey? (Y/N)	Yes
Customer Representative	Enter the Customer representative name	FRANK MOORE
HSE	Was our HSE performance satisfactory? Circle Y or N	Yes
Equipment	Were you satisfied with our Equipment? Circle Y or N	Yes
Personnel	Were you satisfied with our people? Circle Y or N	Yes
Customer Comment	Customer's Comment	

CUSTOMER SIGNATURE

<b>Sales Order #:</b> 8542165	<b>Line Item:</b> 10	<b>Survey Conducted Date:</b> 10/29/2011
<b>Customer:</b> WILLIAMS PRODUCTION RMT INC - EBUS		<b>Job Type (BOM):</b> CMT SURFACE CASING BOM
<b>Customer Representative:</b> FRANK MOORE		<b>API / UWI: (leave blank if unknown)</b> 05-045-19786
<b>Well Name:</b> RWF		<b>Well Number:</b> 43-31
<b>Well Type:</b> Development Well	<b>Well Country:</b> United States of America	
<b>H2S Present:</b> No	<b>Well State:</b> Colorado	<b>Well County:</b> Garfield

*KEY PERFORMANCE INDICATORS*

General	
<b>Survey Conducted Date</b> The date the survey was conducted	10/29/2011

Cementing KPI Survey	
<b>Type of Job</b> Select the type of job. (Cementing or Non-Cementing)	0
<b>Select the Maximum Deviation range for this Job</b> What is the highest deviation for the job you just completed? This may not be the maximum well deviation.	Vertical
<b>Total Operating Time (hours)</b> Total Operating Hours Including Rig-up, Pumping, Rig-down. Enter in decimal format.	4.5
<b>HSE Incident, Accident, Injury</b> HSE Incident, Accident, Injury. This should be recordable incidents only.	No
<b>Was the job purpose achieved?</b> Was the job delivered correctly as per customer agreed design?	Yes
<b>Operating Hours (Pumping Hours)</b> Total number of hours pumping fluid on this job. Enter in decimal format.	2
<b>Customer Non-Productive Rig Time (hrs)</b> Lost time due to Halliburton in the start, execution, or completion of an ordered service or product, or delays in a follow-on service. Enter in decimal format. 0 if none.	0
<b>Type of Rig Classification Job Was Performed</b> Type Of Rig (classification) Job Was Performed On	Drilling Rig (Portable)
<b>Number Of JSAs Performed</b> Number Of Jsas Performed	7
<b>Number of Unplanned Shutdowns</b> Unplanned shutdown is when injection stops for any period of time.	0
<b>Was this a Primary Cement Job (Yes / No)</b>	Yes

<b>Sales Order #:</b> 8542165	<b>Line Item:</b> 10	<b>Survey Conducted Date:</b> 10/29/2011
<b>Customer:</b> WILLIAMS PRODUCTION RMT INC - EBUS		<b>Job Type (BOM):</b> CMT SURFACE CASING BOM
<b>Customer Representative:</b> FRANK MOORE		<b>API / UWI: (leave blank if unknown)</b> 05-045-19786
<b>Well Name:</b> RWF		<b>Well Number:</b> 43-31
<b>Well Type:</b> Development Well	<b>Well Country:</b> United States of America	
<b>H2S Present:</b> No	<b>Well State:</b> Colorado	<b>Well County:</b> Garfield

Primary Cement Job= Casing job, Liner job, or Tie-back job.	
<b>Did We Run Wiper Plugs?</b> Did We Run Top And Bottom Casing Wiper Plugs?	Top
<b>Mixing Density of Job Stayed in Designed Density Range (0-100%)</b> Density Range defined as +/- .20 ppg. Calculation: Total BBLs cement mixed at designed density divided by total BBLs of cement multiplied by 100	95
<b>Was Automated Density Control Used?</b> Was Automated Density Control (ADC) Used ?	Yes
<b>Pump Rate (percent) of Job Stayed At Designed Pump Rate</b> Pump Rate range defined as +/- 1bbl/min. Calculation: Total BBLs of fluid pumped at the designed rate divided by Total BBLs of fluid pumped, multiplied by 100	95
<b>Nbr of Remedial Sqz Jobs Rqd - Competition</b> Number Of Remedial Squeeze Jobs Required After Primary Job Performed By Competition	0
<b>Nbr of Remedial Plug Jobs Rqd - HES</b> Number Of Remedial Plug Jobs Needed After Primary Plug Pumped By HES	0
<b>Nbr of Remedial Sqz Jobs Rqd - HES</b> Number Of Remedial Squeeze Jobs Required After Primary Job Performed By HES	0