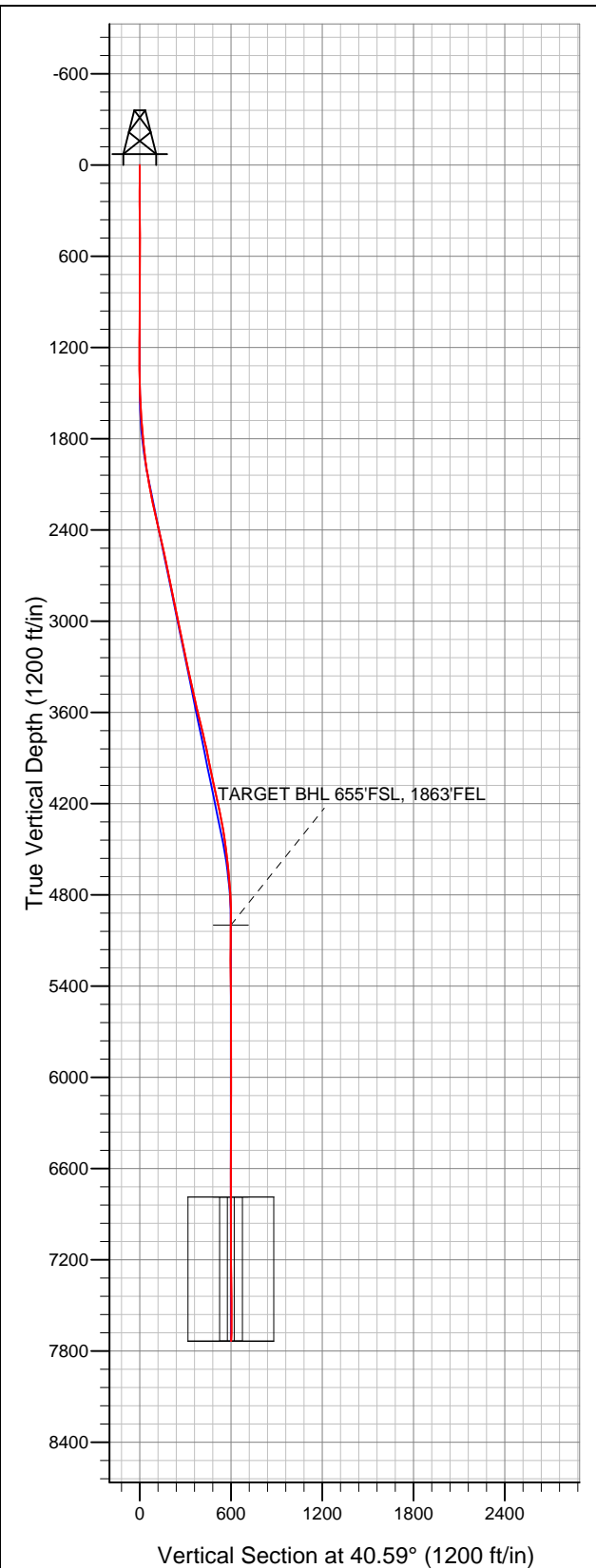


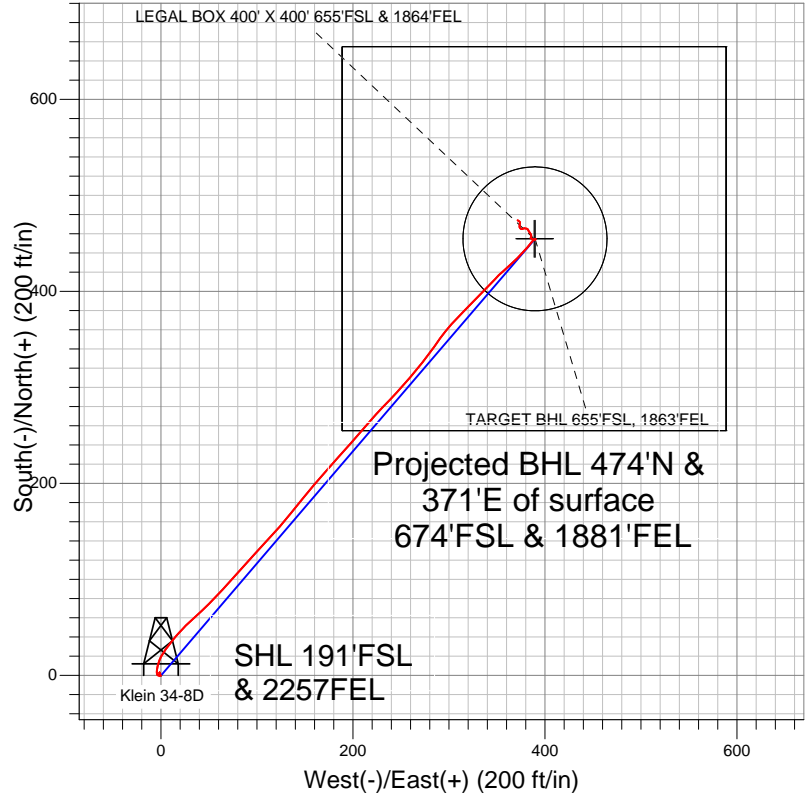
# Well Name: Klein 34-8D

Surface Location: Klein 44-8D Pad Sec.8-T4N-R67W  
 North American Datum 1983 US State Plane 1983Colorado Northern Zone  
 Ground Elevation: 4794.0

+N/-S	+E/-W	Northing	Easting	Latitude	Longitude	Slot
0.0	0.0	1360243.68	3163373.99	40.320788	-104.914081	
		Original Well Elev	WELL @ 4806.0ft (Original Well Elev)			



## Synergy Resources



### LEGEND

- Survey #1
- △ Klein 34-8D, Wellbore #1, Plan #2 (1-16-12) R V0
- Wellbore #1

## Final Survey Plot

Projected Final Survey -  
 7793'MD & 7734'TVD @ 602'VS  
 0.50 deg Inc 304.30 deg AZ

Project: SEC.8-T4N-R67W  
 Site: Klein 44-8D Pad Sec.8-T4N-R67W  
 Well: Klein 34-8D  
 Plan: Wellbore #1



## **Synergy Resources**

**SEC.8-T4N-R67W**

**Klein 44-8D Pad Sec.8-T4N-R67W**

**Klein 34-8D**

**Wellbore #1**

**Survey: Survey #1**

## **Standard Survey Report**

**25 January, 2012**

<b>Company:</b>	Synergy Resources	<b>Local Co-ordinate Reference:</b>	Well Klein 34-8D
<b>Project:</b>	SEC.8-T4N-R67W	<b>TVD Reference:</b>	WELL @ 4806.0ft (Original Well Elev)
<b>Site:</b>	Klein 44-8D Pad Sec.8-T4N-R67W	<b>MD Reference:</b>	WELL @ 4806.0ft (Original Well Elev)
<b>Well:</b>	Klein 34-8D	<b>North Reference:</b>	True
<b>Wellbore:</b>	Wellbore #1	<b>Survey Calculation Method:</b>	Minimum Curvature
<b>Design:</b>	Wellbore #1	<b>Database:</b>	Landmark

<b>Project</b>	SEC.8-T4N-R67W, Weld County, Colorado		
<b>Map System:</b>	US State Plane 1983	<b>System Datum:</b>	Mean Sea Level
<b>Geo Datum:</b>	North American Datum 1983		Using Well Reference Point
<b>Map Zone:</b>	Colorado Northern Zone		Using geodetic scale factor

Site		Klein 44-8D Pad Sec.8-T4N-R67W			
Site Position:		Northing:		1,360,242.64 ft	
From:	Lat/Long	Easting:		Longitude:	
		3,163,433.95 ft		-104.913866	
Position Uncertainty:		Slot Radius:		Grid Convergence:	
0.0 ft		"		0.38 °	

Well	Klein 34-8D					
Well Position	+N/-S	0.0 ft	Northing:	1,360,243.68 ft	Latitude:	40.320788
	+E/-W	0.0 ft	Easting:	3,163,373.99 ft	Longitude:	-104.914081
Position Uncertainty		0.0 ft	Wellhead Elevation:	ft	Ground Level:	4,794.0 ft

Wellbore	Wellbore #1				
Magnetics	Model Name	Sample Date	Declination (°)	Dip Angle (°)	Field Strength (nT)
	IGRF2010	1/3/2012	8.86	66.94	53,016

Design	Wellbore #1				
Audit Notes:					
Version:	1.0	Phase:	ACTUAL	Tie On Depth:	0.0
Vertical Section:	Depth From (TVD) (ft)	+N/-S (ft)	+E/-W (ft)	Direction (°)	
	0.0	0.0	0.0	40.59	

Survey Program		Date	1/25/2012		
From (ft)	To (ft)	Survey (Wellbore)	Tool Name	Description	
81.0	7,793.0	Survey #1 (Wellbore #1)	MWD	MWD - Standard	

Survey									
Measured Depth (ft)	Inclination (°)	Azimuth (°)	Vertical Depth (ft)	+N/-S (ft)	+E/-W (ft)	Vertical Section (ft)	Dogleg Rate (°/100ft)	Build Rate (°/100ft)	Turn Rate (°/100ft)
0.0	0.00	0.00	0.0	0.0	0.0	0.0	0.00	0.00	0.00
81.0	1.10	231.80	81.0	-0.5	-0.6	-0.8	1.36	1.36	0.00
171.0	0.40	294.50	171.0	-0.9	-1.6	-1.7	1.09	-0.78	69.67
261.0	0.80	19.90	261.0	-0.2	-1.6	-1.2	0.96	0.44	94.89
352.0	1.00	354.30	352.0	1.2	-1.5	-0.1	0.49	0.22	-28.13
444.0	0.60	346.50	444.0	2.5	-1.7	0.8	0.45	-0.43	-8.48
525.0	0.20	37.90	525.0	3.0	-1.7	1.2	0.62	-0.49	63.46
604.0	0.50	163.90	604.0	2.8	-1.5	1.1	0.81	0.38	159.49
698.0	0.40	167.10	698.0	2.1	-1.3	0.7	0.11	-0.11	3.40
792.0	0.40	189.90	792.0	1.4	-1.3	0.2	0.17	0.00	24.26
885.0	0.40	211.50	885.0	0.8	-1.6	-0.4	0.16	0.00	23.23
979.0	0.50	234.00	979.0	0.3	-2.1	-1.1	0.21	0.11	23.94
1,073.0	0.40	245.50	1,072.9	-0.1	-2.7	-1.8	0.14	-0.11	12.23

<b>Company:</b>	Synergy Resources	<b>Local Co-ordinate Reference:</b>	Well Klein 34-8D
<b>Project:</b>	SEC.8-T4N-R67W	<b>TVD Reference:</b>	WELL @ 4806.0ft (Original Well Elev)
<b>Site:</b>	Klein 44-8D Pad Sec.8-T4N-R67W	<b>MD Reference:</b>	WELL @ 4806.0ft (Original Well Elev)
<b>Well:</b>	Klein 34-8D	<b>North Reference:</b>	True
<b>Wellbore:</b>	Wellbore #1	<b>Survey Calculation Method:</b>	Minimum Curvature
<b>Design:</b>	Wellbore #1	<b>Database:</b>	Landmark

Survey									
Measured Depth (ft)	Inclination (°)	Azimuth (°)	Vertical Depth (ft)	+N/-S (ft)	+E/-W (ft)	Vertical Section (ft)	Dogleg Rate (°/100ft)	Build Rate (°/100ft)	Turn Rate (°/100ft)
1,166.0	0.40	281.70	1,165.9	-0.1	-3.3	-2.2	0.27	0.00	38.92
1,260.0	0.50	332.80	1,259.9	0.3	-3.8	-2.2	0.42	0.11	54.36
1,354.0	1.10	346.50	1,353.9	1.5	-4.2	-1.6	0.67	0.64	14.57
1,447.0	1.40	3.20	1,446.9	3.5	-4.4	-0.1	0.50	0.32	17.96
1,541.0	2.70	6.20	1,540.8	6.9	-4.1	2.6	1.39	1.38	3.19
1,635.0	4.30	17.10	1,634.7	12.5	-2.8	7.7	1.84	1.70	11.60
1,728.0	4.90	27.00	1,727.4	19.3	0.1	14.7	1.07	0.65	10.65
1,822.0	6.00	35.80	1,820.9	26.9	4.7	23.5	1.47	1.17	9.36
1,916.0	6.40	38.40	1,914.4	35.0	10.9	33.6	0.52	0.43	2.77
2,010.0	8.70	41.20	2,007.6	44.4	18.8	46.0	2.48	2.45	2.98
2,103.0	10.60	47.70	2,099.3	55.5	29.8	61.5	2.35	2.04	6.99
2,197.0	11.10	46.70	2,191.6	67.5	42.8	79.1	0.57	0.53	-1.06
2,291.0	12.20	43.00	2,283.6	81.0	56.1	98.0	1.41	1.17	-3.94
2,384.0	13.30	43.00	2,374.3	96.0	70.1	118.5	1.18	1.18	0.00
2,478.0	13.50	41.40	2,465.8	112.1	84.7	140.3	0.45	0.21	-1.70
2,572.0	11.60	41.60	2,557.5	127.4	98.3	160.7	2.02	-2.02	0.21
2,665.0	11.40	44.50	2,648.7	141.0	110.9	179.2	0.66	-0.22	3.12
2,759.0	11.60	40.10	2,740.8	154.8	123.5	198.0	0.96	0.21	-4.68
2,853.0	11.80	39.10	2,832.8	169.5	135.7	217.0	0.30	0.21	-1.06
2,947.0	11.60	39.30	2,924.9	184.3	147.7	236.1	0.22	-0.21	0.21
3,040.0	11.70	40.70	3,016.0	198.7	159.8	254.8	0.32	0.11	1.51
3,134.0	11.60	40.90	3,108.0	213.1	172.2	273.8	0.11	-0.11	0.21
3,227.0	11.70	42.10	3,199.1	227.1	184.6	292.6	0.28	0.11	1.29
3,321.0	12.40	41.60	3,291.0	241.7	197.7	312.2	0.75	0.74	-0.53
3,415.0	12.30	40.50	3,382.9	256.9	210.9	332.3	0.27	-0.11	-1.17
3,508.0	12.30	42.40	3,473.7	271.7	224.0	352.1	0.44	0.00	2.04
3,602.0	13.40	43.70	3,565.4	287.0	238.3	373.0	1.21	1.17	1.38
3,695.0	13.50	41.70	3,655.8	302.9	253.0	394.6	0.51	0.11	-2.15
3,789.0	13.50	39.10	3,747.2	319.6	267.2	416.6	0.65	0.00	-2.77
3,883.0	12.00	36.30	3,838.9	336.0	279.9	437.3	1.73	-1.60	-2.98
3,976.0	11.10	34.90	3,930.0	351.1	290.8	455.8	1.01	-0.97	-1.51
4,070.0	12.00	42.30	4,022.1	365.8	302.5	474.6	1.84	0.96	7.87
4,164.0	12.30	44.40	4,114.0	380.2	316.1	494.4	0.57	0.32	2.23
4,257.0	12.70	44.90	4,204.8	394.5	330.2	514.4	0.45	0.43	0.54
4,351.0	11.50	43.30	4,296.7	408.6	344.0	534.1	1.33	-1.28	-1.70
4,445.0	8.90	47.20	4,389.2	420.4	355.7	550.7	2.86	-2.77	4.15
4,538.0	7.50	48.10	4,481.3	429.3	365.5	563.9	1.51	-1.51	0.97
4,632.0	6.40	43.80	4,574.6	437.2	373.7	575.2	1.29	-1.17	-4.57
4,726.0	5.80	40.10	4,668.1	444.6	380.4	585.1	0.76	-0.64	-3.94
4,819.0	3.90	40.10	4,760.7	450.6	385.5	593.0	2.04	-2.04	0.00
4,913.0	2.10	63.90	4,854.6	453.8	389.1	597.8	2.29	-1.91	25.32
5,007.0	0.60	229.80	4,948.6	454.3	390.2	598.9	2.86	-1.60	176.49
5,058.4	0.69	248.32	5,000.0	454.0	389.8	598.3	0.44	0.17	36.02
TARGET BHL 655'FSL, 1863'FEL									
5,101.0	0.80	259.70	5,042.6	453.9	389.2	597.9	0.44	0.27	26.72
5,195.0	0.90	289.10	5,136.6	454.0	387.9	597.1	0.47	0.11	31.28
5,288.0	0.90	297.00	5,229.5	454.5	386.5	596.7	0.13	0.00	8.49
5,382.0	0.90	301.00	5,323.5	455.3	385.2	596.4	0.07	0.00	4.26
5,476.0	0.70	53.70	5,417.5	456.0	385.1	596.8	1.42	-0.21	119.89
5,569.0	0.70	11.80	5,510.5	456.9	385.7	597.9	0.54	0.00	-45.05
5,663.0	1.10	352.70	5,604.5	458.3	385.7	599.0	0.53	0.43	-20.32
5,757.0	0.50	312.60	5,698.5	459.5	385.2	599.6	0.84	-0.64	-42.66
5,851.0	0.70	329.00	5,792.5	460.3	384.6	599.8	0.28	0.21	17.45
5,944.0	0.90	329.70	5,885.5	461.4	384.0	600.2	0.22	0.22	0.75

<b>Company:</b>	Synergy Resources	<b>Local Co-ordinate Reference:</b>	Well Klein 34-8D
<b>Project:</b>	SEC.8-T4N-R67W	<b>TVD Reference:</b>	WELL @ 4806.0ft (Original Well Elev)
<b>Site:</b>	Klein 44-8D Pad Sec.8-T4N-R67W	<b>MD Reference:</b>	WELL @ 4806.0ft (Original Well Elev)
<b>Well:</b>	Klein 34-8D	<b>North Reference:</b>	True
<b>Wellbore:</b>	Wellbore #1	<b>Survey Calculation Method:</b>	Minimum Curvature
<b>Design:</b>	Wellbore #1	<b>Database:</b>	Landmark

Survey										
Measured Depth (ft)	Inclination (°)	Azimuth (°)	Vertical Depth (ft)	+N/-S (ft)	+E/-W (ft)	Vertical Section (ft)	Dogleg Rate (°/100ft)	Build Rate (°/100ft)	Turn Rate (°/100ft)	
6,038.0	0.90	316.50	5,979.5	462.6	383.1	600.5	0.22	0.00	-14.04	
6,132.0	0.40	11.30	6,073.5	463.4	382.7	600.9	0.79	-0.53	58.30	
6,225.0	0.60	321.90	6,166.5	464.1	382.4	601.3	0.49	0.22	-53.12	
6,319.0	0.60	302.10	6,260.5	464.8	381.7	601.3	0.22	0.00	-21.06	
6,413.0	0.80	296.30	6,354.5	465.3	380.7	601.1	0.23	0.21	-6.17	
6,507.0	0.80	272.50	6,448.4	465.6	379.4	600.5	0.35	0.00	-25.32	
6,600.0	0.70	268.70	6,541.4	465.7	378.2	599.7	0.12	-0.11	-4.09	
6,694.0	0.90	234.00	6,635.4	465.2	377.1	598.6	0.55	0.21	-36.91	
6,788.0	0.70	272.70	6,729.4	464.8	375.9	597.5	0.60	-0.21	41.17	
6,846.4	0.74	293.68	6,787.8	465.0	375.2	597.2	0.45	0.06	35.94	
LEGAL BOX 400' X 400' 655'FSL & 1864'FEL - TARGET CIRCLE 655'FSL, 1863'FEL										
6,882.0	0.80	304.70	6,823.4	465.2	374.8	597.1	0.45	0.18	30.94	
6,976.0	0.60	326.70	6,917.4	466.0	374.0	597.2	0.35	-0.21	23.40	
7,069.0	0.80	338.30	7,010.4	467.0	373.5	597.6	0.26	0.22	12.47	
7,163.0	0.60	13.80	7,104.4	468.1	373.3	598.4	0.50	-0.21	37.77	
7,257.0	0.70	5.70	7,198.4	469.1	373.5	599.3	0.14	0.11	-8.62	
7,350.0	0.70	17.80	7,291.4	470.2	373.7	600.3	0.16	0.00	13.01	
7,444.0	0.70	8.70	7,385.4	471.4	374.0	601.3	0.12	0.00	-9.68	
7,538.0	0.80	322.80	7,479.4	472.4	373.7	601.9	0.63	0.11	-48.83	
7,632.0	0.70	293.80	7,573.4	473.2	372.8	601.9	0.41	-0.11	-30.85	
7,743.0	0.50	304.30	7,684.4	473.8	371.7	601.6	0.20	-0.18	9.46	
7,793.0	0.50	304.30	7,734.4	474.0	371.4	601.6	0.00	0.00	0.00	

Checked By: _____	Approved By: _____	Date: _____
-------------------	--------------------	-------------