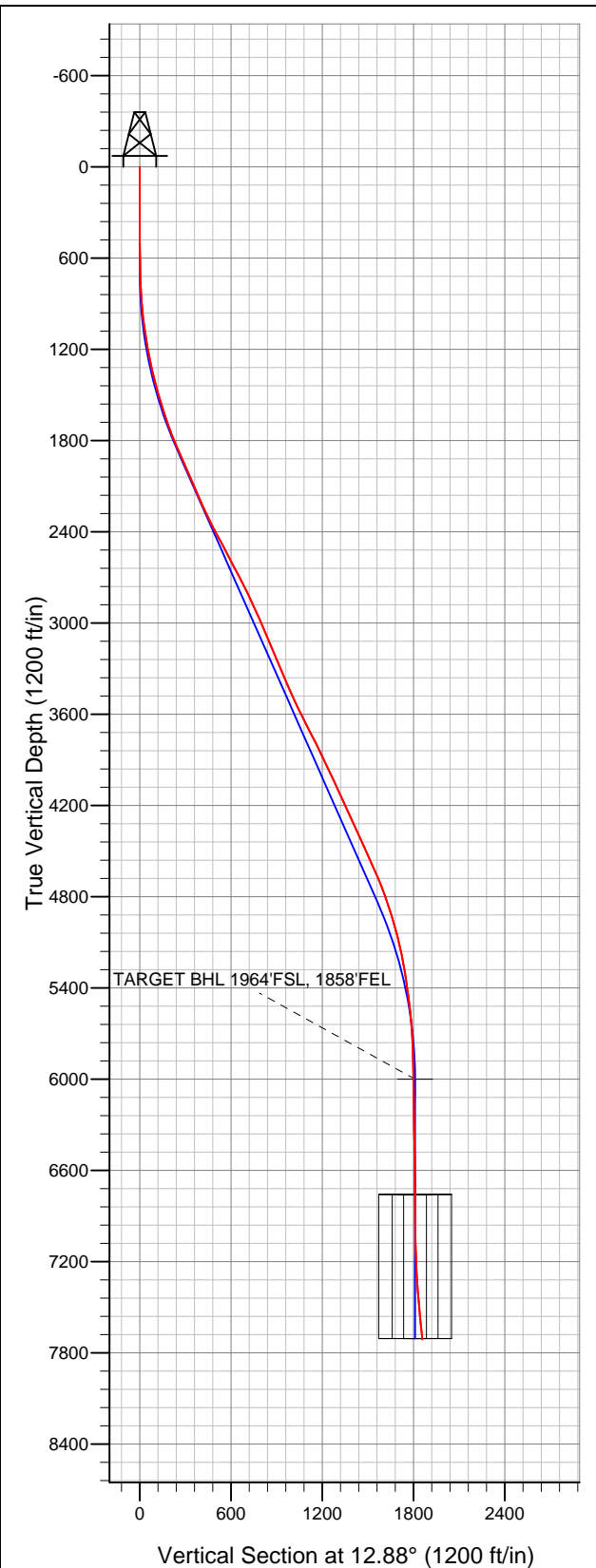


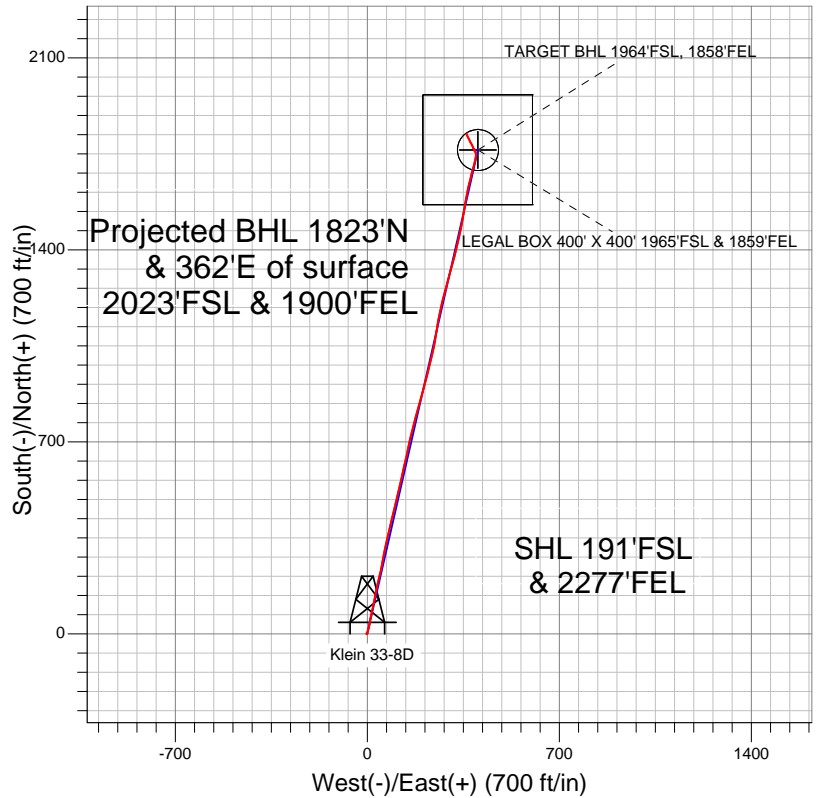
# Well Name: Klein 33-8D

Surface Location: Klein 44-8D Pad Sec.8-T4N-R67W  
 North American Datum 1983 US State Plane 1983 Colorado Northern Zone  
 Ground Elevation: 4794.0

+N/-S	+E/-W	Northing	Easting	Latitude	Longitude	Slot
0.0	0.0	1360243.92	3163353.91	40.320789	-104.914153	
		Original Well Elev				WELL @ 4806.0ft (Original Well Elev)



## Synergy Resources



### LEGEND

- Survey #1
- + Klein 33-8D, Wellbore #1, Plan #2 (1-09-12) R V0
- Wellbore #1

## Final Survey Plot

Projected Final Survey -  
 8070'MD & 7710'TVD @ 1858'VS  
 7.90 deg Inc 337.20 deg AZ

Project: SEC.8-T4N-R67W  
 Site: Klein 44-8D Pad Sec.8-T4N-R67W  
 Well: Klein 33-8D  
 Plan: Wellbore #1



## **Synergy Resources**

**SEC.8-T4N-R67W**

**Klein 44-8D Pad Sec.8-T4N-R67W**

**Klein 33-8D**

**Wellbore #1**

**Survey: Survey #1**

## **Standard Survey Report**

**19 January, 2012**

<b>Company:</b>	Synergy Resources	<b>Local Co-ordinate Reference:</b>	Well Klein 33-8D
<b>Project:</b>	SEC.8-T4N-R67W	<b>TVD Reference:</b>	WELL @ 4806.0ft (Original Well Elev)
<b>Site:</b>	Klein 44-8D Pad Sec.8-T4N-R67W	<b>MD Reference:</b>	WELL @ 4806.0ft (Original Well Elev)
<b>Well:</b>	Klein 33-8D	<b>North Reference:</b>	True
<b>Wellbore:</b>	Wellbore #1	<b>Survey Calculation Method:</b>	Minimum Curvature
<b>Design:</b>	Wellbore #1	<b>Database:</b>	Landmark

<b>Project</b>	SEC.8-T4N-R67W, Weld County, Colorado		
<b>Map System:</b>	US State Plane 1983	<b>System Datum:</b>	Mean Sea Level
<b>Geo Datum:</b>	North American Datum 1983		Using Well Reference Point
<b>Map Zone:</b>	Colorado Northern Zone		Using geodetic scale factor

Site		Klein 44-8D Pad Sec.8-T4N-R67W			
Site Position:		Northing:		1,360,242.64 ft	
From:	Lat/Long	Easting:		Longitude:	
		3,163,433.95 ft		-104.913866	
Position Uncertainty:		Slot Radius:		Grid Convergence:	
0.0 ft		"		0.38 °	

Well	Klein 33-8D					
Well Position	+N/-S	0.0 ft	Northing:	1,360,243.92 ft	Latitude:	40.320789
	+E/-W	0.0 ft	Easting:	3,163,353.91 ft	Longitude:	-104.914153
Position Uncertainty		0.0 ft	Wellhead Elevation:	ft	Ground Level:	4,794.0 ft

Wellbore	Wellbore #1				
Magnetics	Model Name	Sample Date	Declination (°)	Dip Angle (°)	Field Strength (nT)
	IGRF2010	1/3/2012	8.86	66.94	53,016

Design	Wellbore #1			
Audit Notes:				
Version:	1.0	Phase:	ACTUAL	Tie On Depth: 0.0
Vertical Section:	Depth From (TVD) (ft)	+N/-S (ft)	+E/-W (ft)	Direction (°)
	0.0	0.0	0.0	12.88

Survey Program		Date	1/19/2012		
From (ft)	To (ft)	Survey (Wellbore)	Tool Name	Description	
81.0	8,070.0	Survey #1 (Wellbore #1)	MWD	MWD - Standard	

Survey									
Measured Depth (ft)	Inclination (°)	Azimuth (°)	Vertical Depth (ft)	+N/-S (ft)	+E/-W (ft)	Vertical Section (ft)	Dogleg Rate (°/100ft)	Build Rate (°/100ft)	Turn Rate (°/100ft)
0.0	0.00	0.00	0.0	0.0	0.0	0.0	0.00	0.00	0.00
81.0	1.10	274.60	81.0	0.1	-0.8	-0.1	1.36	1.36	0.00
171.0	0.60	274.50	171.0	0.2	-2.1	-0.3	0.56	-0.56	-0.11
261.0	0.30	287.60	261.0	0.3	-2.8	-0.4	0.35	-0.33	14.56
352.0	0.40	274.50	352.0	0.4	-3.3	-0.4	0.14	0.11	-14.40
444.0	0.40	15.00	444.0	0.7	-3.6	-0.1	0.67	0.00	109.24
527.0	0.30	57.00	527.0	1.1	-3.3	0.3	0.32	-0.12	50.60
604.0	0.90	69.70	604.0	1.4	-2.6	0.8	0.79	0.78	16.49
697.0	1.60	39.60	697.0	2.7	-1.1	2.4	1.01	0.75	-32.37
791.0	2.80	18.70	790.9	5.9	0.5	5.8	1.52	1.28	-22.23
884.0	4.20	16.10	883.7	11.3	2.2	11.5	1.51	1.51	-2.80
978.0	6.20	15.00	977.3	19.5	4.4	20.0	2.13	2.13	-1.17
1,072.0	8.30	11.50	1,070.6	31.1	7.1	31.9	2.28	2.23	-3.72

<b>Company:</b>	Synergy Resources	<b>Local Co-ordinate Reference:</b>	Well Klein 33-8D
<b>Project:</b>	SEC.8-T4N-R67W	<b>TVD Reference:</b>	WELL @ 4806.0ft (Original Well Elev)
<b>Site:</b>	Klein 44-8D Pad Sec.8-T4N-R67W	<b>MD Reference:</b>	WELL @ 4806.0ft (Original Well Elev)
<b>Well:</b>	Klein 33-8D	<b>North Reference:</b>	True
<b>Wellbore:</b>	Wellbore #1	<b>Survey Calculation Method:</b>	Minimum Curvature
<b>Design:</b>	Wellbore #1	<b>Database:</b>	Landmark

Survey									
Measured Depth (ft)	Inclination (°)	Azimuth (°)	Vertical Depth (ft)	+N/-S (ft)	+E/-W (ft)	Vertical Section (ft)	Dogleg Rate (°/100ft)	Build Rate (°/100ft)	Turn Rate (°/100ft)
1,166.0	9.70	8.30	1,163.4	45.5	9.6	46.5	1.58	1.49	-3.40
1,259.0	10.90	12.00	1,254.9	61.9	12.6	63.1	1.47	1.29	3.98
1,353.0	13.50	13.40	1,346.8	81.3	17.0	83.0	2.78	2.77	1.49
1,447.0	14.90	10.60	1,437.9	103.8	21.7	106.0	1.66	1.49	-2.98
1,540.0	16.20	11.50	1,527.5	128.3	26.5	131.0	1.42	1.40	0.97
1,634.0	18.30	11.30	1,617.3	155.6	32.0	158.8	2.23	2.23	-0.21
1,728.0	19.80	13.30	1,706.1	185.6	38.6	189.5	1.74	1.60	2.13
1,821.0	22.60	13.40	1,792.8	218.3	46.3	223.1	3.01	3.01	0.11
1,915.0	24.40	10.30	1,879.0	255.0	54.0	260.6	2.32	1.91	-3.30
2,009.0	23.50	10.30	1,964.9	292.5	60.8	298.7	0.96	-0.96	0.00
2,103.0	22.20	12.70	2,051.5	328.3	68.1	335.2	1.70	-1.38	2.55
2,196.0	23.60	12.90	2,137.2	363.6	76.1	371.4	1.51	1.51	0.22
2,290.0	24.40	14.70	2,223.1	400.7	85.2	409.6	1.15	0.85	1.91
2,384.0	26.80	13.80	2,307.8	440.1	95.2	450.2	2.59	2.55	-0.96
2,477.0	27.80	12.40	2,390.5	481.6	104.9	492.9	1.28	1.08	-1.51
2,571.0	28.20	12.00	2,473.5	524.7	114.2	537.0	0.47	0.43	-0.43
2,665.0	27.80	13.60	2,556.5	567.8	124.0	581.1	0.91	-0.43	1.70
2,759.0	27.00	12.90	2,639.9	609.9	133.9	624.4	0.92	-0.85	-0.74
2,852.0	27.60	12.90	2,722.6	651.4	143.4	667.0	0.65	0.65	0.00
2,946.0	26.00	11.30	2,806.5	692.9	152.3	709.4	1.87	-1.70	-1.70
3,039.0	24.40	13.80	2,890.6	731.5	160.9	749.0	2.07	-1.72	2.69
3,133.0	24.20	14.50	2,976.3	769.0	170.3	787.7	0.37	-0.21	0.74
3,227.0	23.00	17.10	3,062.4	805.2	180.6	825.2	1.69	-1.28	2.77
3,320.0	22.30	16.40	3,148.3	839.5	190.9	861.0	0.81	-0.75	-0.75
3,414.0	22.70	14.10	3,235.1	874.2	200.3	896.9	1.03	0.43	-2.45
3,508.0	23.30	13.30	3,321.6	909.9	209.0	933.6	0.72	0.64	-0.85
3,601.0	23.50	14.70	3,407.0	945.8	218.0	970.5	0.64	0.22	1.51
3,695.0	24.80	14.50	3,492.8	983.0	227.7	1,009.0	1.39	1.38	-0.21
3,788.0	26.00	12.90	3,576.8	1,021.7	237.1	1,048.9	1.49	1.29	-1.72
3,882.0	27.40	10.80	3,660.7	1,063.1	245.7	1,091.1	1.80	1.49	-2.23
3,976.0	27.40	8.20	3,744.2	1,105.7	252.9	1,134.3	1.27	0.00	-2.77
4,069.0	26.40	10.60	3,827.1	1,147.2	259.7	1,176.3	1.59	-1.08	2.58
4,163.0	25.00	12.70	3,911.8	1,187.1	267.9	1,217.0	1.78	-1.49	2.23
4,257.0	25.10	15.00	3,997.0	1,225.8	277.5	1,256.8	1.04	0.11	2.45
4,350.0	24.50	14.00	4,081.4	1,263.5	287.2	1,295.8	0.79	-0.65	-1.08
4,444.0	24.50	15.30	4,167.0	1,301.3	297.1	1,334.7	0.57	0.00	1.38
4,538.0	25.40	16.10	4,252.2	1,339.4	307.8	1,374.3	1.02	0.96	0.85
4,631.0	24.20	14.80	4,336.6	1,377.0	318.2	1,413.3	1.42	-1.29	-1.40
4,725.0	24.30	12.40	4,422.3	1,414.5	327.3	1,451.9	1.05	0.11	-2.55
4,819.0	24.10	11.70	4,508.1	1,452.2	335.4	1,490.4	0.37	-0.21	-0.74
4,913.0	25.00	11.50	4,593.6	1,490.5	343.2	1,529.5	0.96	0.96	-0.21
5,006.0	22.90	9.90	4,678.6	1,527.6	350.2	1,567.2	2.36	-2.26	-1.72
5,100.0	20.10	8.70	4,766.0	1,561.6	355.8	1,601.6	3.02	-2.98	-1.28
5,194.0	18.50	10.60	4,854.7	1,592.2	361.0	1,632.6	1.83	-1.70	2.02
5,287.0	17.10	12.00	4,943.3	1,620.1	366.6	1,661.0	1.57	-1.51	1.51
5,381.0	14.80	15.20	5,033.6	1,645.2	372.6	1,686.8	2.62	-2.45	3.40
5,475.0	12.80	13.60	5,124.9	1,666.9	378.2	1,709.2	2.17	-2.13	-1.70
5,569.0	10.80	12.70	5,216.9	1,685.6	382.6	1,728.5	2.14	-2.13	-0.96
5,662.0	9.00	18.90	5,308.5	1,701.0	386.8	1,744.4	2.25	-1.94	6.67
5,756.0	7.40	12.70	5,401.6	1,713.8	390.6	1,757.8	1.94	-1.70	-6.60
5,850.0	7.40	9.70	5,494.8	1,725.7	392.9	1,769.9	0.41	0.00	-3.19
5,944.0	5.90	9.60	5,588.2	1,736.4	394.7	1,780.7	1.60	-1.60	-0.11
6,037.0	4.30	9.60	5,680.8	1,744.6	396.1	1,789.0	1.72	-1.72	0.00
6,131.0	2.60	340.40	5,774.6	1,750.1	396.0	1,794.3	2.55	-1.81	-31.06

<b>Company:</b>	Synergy Resources	<b>Local Co-ordinate Reference:</b>	Well Klein 33-8D
<b>Project:</b>	SEC.8-T4N-R67W	<b>TVD Reference:</b>	WELL @ 4806.0ft (Original Well Elev)
<b>Site:</b>	Klein 44-8D Pad Sec.8-T4N-R67W	<b>MD Reference:</b>	WELL @ 4806.0ft (Original Well Elev)
<b>Well:</b>	Klein 33-8D	<b>North Reference:</b>	True
<b>Wellbore:</b>	Wellbore #1	<b>Survey Calculation Method:</b>	Minimum Curvature
<b>Design:</b>	Wellbore #1	<b>Database:</b>	Landmark

Survey									
Measured Depth (ft)	Inclination (°)	Azimuth (°)	Vertical Depth (ft)	+N/-S (ft)	+E/-W (ft)	Vertical Section (ft)	Dogleg Rate (°/100ft)	Build Rate (°/100ft)	Turn Rate (°/100ft)
6,225.0	1.00	4.80	5,868.6	1,752.9	395.3	1,796.9	1.85	-1.70	25.96
6,319.0	1.10	319.60	5,962.6	1,754.4	394.8	1,798.3	0.86	0.11	-48.09
6,356.5	1.23	332.69	6,000.1	1,755.0	394.4	1,798.8	0.78	0.34	34.88
<b>TARGET BHL 1964'FSL, 1858'FEL</b>									
6,412.0	1.50	346.90	6,055.5	1,756.3	394.0	1,799.9	0.78	0.49	25.62
6,506.0	0.70	325.80	6,149.5	1,757.9	393.4	1,801.4	0.94	-0.85	-22.45
6,600.0	0.80	291.00	6,243.5	1,758.7	392.4	1,801.9	0.49	0.11	-37.02
6,694.0	2.00	336.30	6,337.5	1,760.4	391.2	1,803.3	1.64	1.28	48.19
6,787.0	0.80	24.00	6,430.5	1,762.5	390.8	1,805.2	1.70	-1.29	51.29
6,881.0	1.10	346.90	6,524.5	1,763.9	390.8	1,806.7	0.71	0.32	-39.47
6,975.0	1.20	331.40	6,618.4	1,765.7	390.2	1,808.2	0.35	0.11	-16.49
7,069.0	1.30	7.10	6,712.4	1,767.6	389.8	1,810.0	0.82	0.11	37.98
7,114.6	0.37	347.19	6,758.0	1,768.3	389.9	1,810.7	2.12	-2.05	-43.70
<b>TARGET CIRCLE 1964'FSL, 1858'FEL - LEGAL BOX 400' X 400' 1965'FSL &amp; 1859'FEL</b>									
7,162.0	0.70	208.40	6,805.4	1,768.2	389.7	1,810.5	2.12	0.70	-292.53
7,256.0	0.40	310.30	6,899.4	1,767.9	389.2	1,810.1	0.93	-0.32	108.40
7,350.0	1.30	309.80	6,993.4	1,768.8	388.1	1,810.8	0.96	0.96	-0.53
7,443.0	1.70	332.30	7,086.4	1,770.7	386.6	1,812.3	0.76	0.43	24.19
7,537.0	3.20	342.10	7,180.3	1,774.4	385.2	1,815.6	1.65	1.60	10.43
7,631.0	4.00	332.50	7,274.1	1,779.8	382.9	1,820.4	1.06	0.85	-10.21
7,724.0	5.20	331.90	7,366.8	1,786.4	379.4	1,826.0	1.29	1.29	-0.65
7,818.0	6.20	332.10	7,460.3	1,794.6	375.0	1,833.1	1.06	1.06	0.21
7,912.0	6.80	333.90	7,553.7	1,804.1	370.2	1,841.2	0.67	0.64	1.91
8,020.0	7.90	337.20	7,660.8	1,816.7	364.5	1,852.2	1.09	1.02	3.06
8,070.0	7.90	337.20	7,710.4	1,823.0	361.8	1,857.8	0.00	0.00	0.00

Checked By: _____	Approved By: _____	Date: _____
-------------------	--------------------	-------------