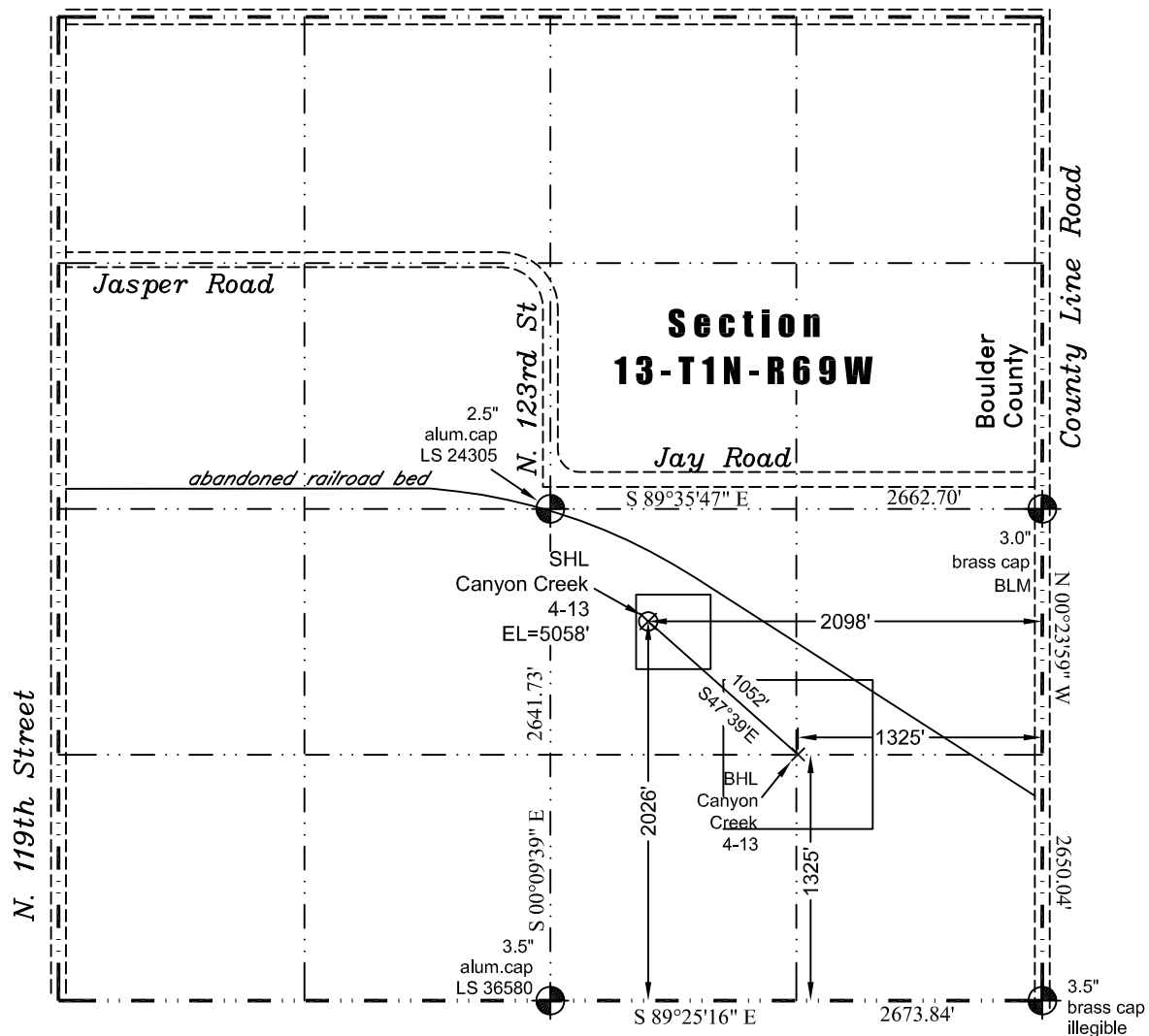


JR Land Surveying, LLC
8114 Northstar Drive
Windsor, Colorado 80528
P. 970-576-4641

WELL LOCATION CERTIFICATE

THIS MAP DOES NOT REPRESENT A BOUNDARY SURVEY



Scale 1" = 1000'
1000
0
approximate scale

LEGEND
— found survey monument
--- improved road
--- calculated dimension
(c)

In accordance with a request from Jennifer Lind of EnCana Oil & Gas (USA) Inc., JR Land Surveying, LLC has determined the location of the **Canyon Creek 4-13** well site to be SHL: 2026' FSL and 2098' FEL (BHL: 1325' FSL and 1325' FEL) as measured at ninety (90) degrees from the section lines of Section 13, Township 1 North, Range 69 West, 6th Principal Meridian, Town of Erie, Boulder County, CO.

Proposed Surface Hole Data:

Latitude: N 40.04952° (BHL 40.04756°)
Longitude: W 105.06298° (BHL 105.06021°)
PDOP: 1.3

Nearest:

Building 488' northeast	Above Ground Utility 795' north
Public Road 805' north	Railroad 305' northeast (abandoned)
Property Line 210' northeast	Well Window: SHL is 101' inside
Existing Well: Shaffer-Newman H Unit #1, 2,226' southwest	

Notes:

- 1) Bearings and distances based upon NAD 83 Colorado North State Plane Coordinates using RTK GPS observations taken on 5/25/2012 by operator John Rice.
- 2) Conversion factor to ground (1.0002739979).
- 3) Elevations based on NGVD 88 GPS heights and Geoid 2003 corrections.
- 4) See Location Drawing for visible improvements within 400 feet.
- 5) The surface use is a cultivated field.

I hereby certify that this Well Location Certificate was prepared by me or under my direct supervision on 7/3/2012 for and on behalf of EnCana Oil & Gas (USA) Inc. That it is not a Land Survey Plat or an Improvement Survey Plat and that it is not to be relied upon for establishment of fences, buildings, or other future improvement lines. **38219**

John Robert McGehee LS#38219
Well: Canyon Creek 4-13 W.L.C.

NOTICE: According to Colorado law you must commence any legal action based upon any defect in this W.L.C. within three years after you first discover such defect. In no event may any action based upon any defect in this W.L.C. be commenced more than ten years from this said date of the certification shown hereon.