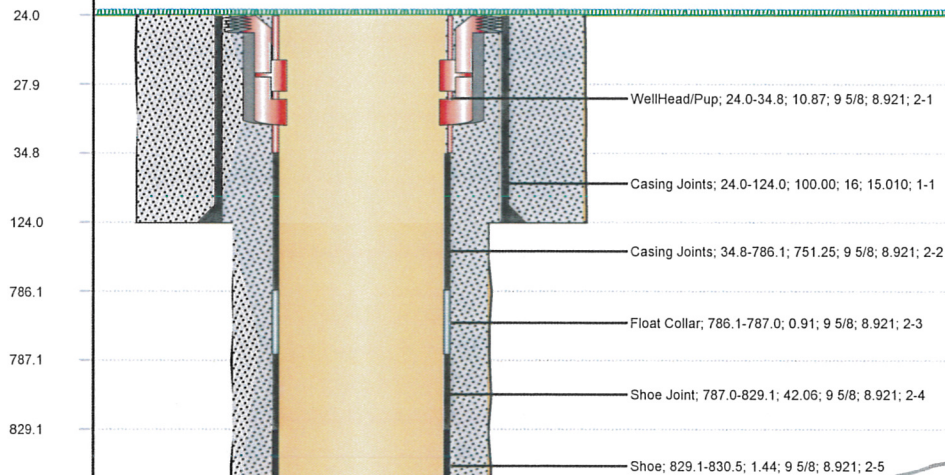


Well Name: JONES AC06-75HN

HORIZONTAL - ORIGINAL HOLE, 7/5/2012 1:33:21 PM

MD (ftKB)

Vertical schematic (actual)



★ Depths are not to scale

Plug # 2 set from 6000' MD to 6500' MD
225 sks cement class G
17.5 ppg, 0.94 ft³/sk yield
★ KOP will be near 6200' MD

Plug # 1 set from 6620' MD to 7170' MD
200 sks cement class G
15.8 ppg, 1.15 ft³/sk yield

Top of fish @ 7170' MD



Well Name: JONES AC06-75HN

Directional Plot_Plan vs Actual

API 05-123-35214	Surface Legal Location SWSE	License #	Well Configuration Type HORIZONTAL	Ground Elevation (ft) 4,891.00	Casing Flange Elevation (ft)	KB - GL / MSL (ftKB) 24.00	KB-Casing Flange Distance (ft)
---------------------	--------------------------------	-----------	---------------------------------------	-----------------------------------	------------------------------	-------------------------------	--------------------------------

Vertical Section

Plan

