

**QUICKSILVER RESOURCES INC-EBUSINESS
DO NOT MAIL-801 CHERRY ST
FORT WORTH, Texas**

SIMOES 22-30

DHS 6

Post Job Summary **Cement Production Casing**

Date Prepared: June 18, 2012
Version: 1

Service Supervisor: SLAUGH, CODY

Submitted by: Charli A Brown

HALLIBURTON

HALLIBURTON

Wellbore Geometry

Job Tubulars					MD		Excess %	Shoe Joint Length ft
Type	Description	Size in	ID in	Wt lbm/ft	Top ft	Bottom ft		
Open Hole Section	OPEN HOLE		6.125		6,700.00	8,590.00	20	
Casing	PRODCUTION CASING	4.50	.000	13.50	0.00	8,590.00	0	40
Casing	INTERMEDIATE CASING	7.00	6.276	26.00	0.00	6,700.00	0	

Pumping Schedule

Fluid #	Fluid Type	Fluid Name	Density lbm/gal	Avg Rate bbl/min	Volume
1	Spacer	TUNED SPACER III	10.00	4.00	20.0 bbl
2	Spacer	Mud Recovery Spacer	10.00	4.00	75.0 bbl
3	Spacer	MUD FLUSH	8.40	4.00	10.0 bbl
4	Cement Slurry	LifeCem	13.50	4.00	250.0 sacks
5	Spacer	KCl Displacement	8.40	5.00	122.0 bbl

Fluids Pumped

Stage/Plug # 1 Fluid 1: TUNED SPACER III
TUNED SPACER III - SBM (483826)

Fluid Density: 10.00 lbm/gal
Fluid Volume: 20.00 bbl
Pump Rate: 4.00 bbl/min

Stage/Plug # 1 Fluid 2: Mud Recovery Spacer
MUD RECOVERY SPACER

Fluid Density: 10.00 lbm/gal
Fluid Volume: 75.00 bbl
Pump Rate: 4.00 bbl/min

Stage/Plug # 1 Fluid 3: MUD FLUSH
MUD FLUSH - ZI - SBM (13383)

Fluid Density: 8.40 lbm/gal
Fluid Volume: 10.00 bbl
Pump Rate: 4.00 bbl/min

Stage/Plug # 1 Fluid 4: LifeCem
LIFECM (TM) CEMENT
7.46 Gal Fresh Water

Fluid Weight: 13.50 lbm/gal
Slurry Yield: 1.73 ft³/sack
Total Mixing Fluid: 7.46 Gal
Surface Volume: 250.0 sacks
Calculated Fill: 2,800.00 ft
Pump Rate: 4.00 bbl/min

HALLIBURTON

Stage/Plug # 1 **Fluid 5:** KCl Displacement
KCL WATER
7.15 lbm/bbl KCL

Fluid Density: 8.40 lbm/gal
Fluid Volume: 122.00 bbl
Pump Rate: 5.00 bbl/min

Job Summary

Job Information

Job Start Date	6/17/2012 11:35:00 AM
Job MD	8,590.0 ft
Job TVD	8,590.0 ft
Height of Plug Container/Swage Above Rig Floor	5.0 ft
Surface Temperature at Time of Job	75 degF
Mud Type	INTEGRADE
Actual Mud Density	10 lbm/gal
Time Circulated before job	2.50 hour(s)
Time From End Mud Circ. to Job Start	15.00 minute
Pipe Movement During Cementing	None
Calculated Displacement	122.00 bbl
Job Displaced by (rig/halco)	Cement Unit HP Pumps
Annular flow Before Job? (Water/Gas)	Unknown
Annular flow After Job? (Water/Gas)	No

Cementing Equipment

Did Float Equipment Hold?	Yes
Plug set used?	Yes
Did Plugs Bump?	Yes
Calculated Pressure to Bump Plugs	1,450.0 psig

Service Supervisor Reports

Job Log

Date/Time	Activity Code	Pump Rate	Volume	Pressure (psig)	Comments
06/17/2012 01:00	Call Out				
06/17/2012 03:10	Safety Meeting - Service Center				Discuss wild life and other traffic on Hwy dusty roads on lease roads
06/17/2012 06:00	Arrive at Location				Rig still running casing Checked with customer and we was to supply KCL called and had it brought to location. It arrived before we were rigged up.

HALLIBURTON

Date/Time	Activity Code	Pump Rate	Volume	Pressure (psig)	Comments
06/17/2012 06:05	Assessment Of Location Safety Meeting				Casing on bottom at 0900
06/17/2012 09:45	Safety Meeting - Pre Rig-Up				
06/17/2012 09:55	Rig-Up Equipment				
06/17/2012 10:35	Rig-Up Completed				
06/17/2012 11:25	Safety Meeting - Pre Job				
06/17/2012 11:39	Pump Spacer 1	3	3	230.0	load lines with Tuned Spacer
06/17/2012 11:42	Test Lines				Test lines to 5170 PSI
06/17/2012 11:48	Pump Spacer 1	4	17	209.0	Pump Tuned Spacer
06/17/2012 11:54	Pump Spacer 1	4	75	200.0	Pump Mud
06/17/2012 12:08	Pump Spacer 1	4	10	70.0	Pump Mudflush
06/17/2012 12:10	Pump Cement	4	77	230.0	Pump 250 SKS cement at 13.5#, Yeild 1.73, Water 7.46
06/17/2012 12:32	Shutdown				
06/17/2012 12:32	Drop Top Plug				
06/17/2012 12:32	Clean Lines				
06/17/2012 12:37	Pump Displacement		122	130.0	
06/17/2012 12:47	Slow Rate	6	68	520.0	Caught plug slow rate
06/17/2012 12:48	Slow Rate	5	22	1280.0	
06/17/2012 12:52	Spacer Returns to Surface		7	1280.0	Got 20 BBLS tuned spacer to surface and 4 bbls of mud
06/17/2012 12:54	Slow Rate	2	10	1130.0	
06/17/2012 13:06	Bump Plug	2	22.5	1480.0	
06/17/2012 13:08	Check Floats			2230.0	1 bbl back after checking floats
06/17/2012 13:10	Pre-Rig Down Safety Meeting				
06/17/2012 13:15	Rig-Down Equipment				
06/17/2012 14:30	Pre-Convoy Safety Meeting				
06/17/2012 14:45	Crew Leave Location				

The Road to Excellence Starts with Safety

Sold To #: 346707	Ship To #: 2931551	Quote #:	Sales Order #: 9594107
Customer: QUICKSILVER RESOURCES INC-EBUSINESS		Customer Rep:	
Well Name: SIMOES		Well #: 22-30	API/UWI #: 05-081-07724
Field:	City (SAP): CRAIG	County/Parish: Moffat	State: Colorado
Contractor: DHS		Rig/Platform Name/Num: 6	
Job Purpose: Cement Production Casing			
Well Type: Development Well		Job Type: Cement Production Casing	
Sales Person: SCOTT, KYLE		Srv Supervisor: SLAUGH, CODY	MBU ID Emp #: 104465

Job Personnel

HES Emp Name	Exp Hrs	Emp #	HES Emp Name	Exp Hrs	Emp #	HES Emp Name	Exp Hrs	Emp #
ESTEP, KENNETH	7	214387	SLAUGH, CODY B	7	104465	WHITE, KAMEREON V	7	475856
WILLIAMS, DAVID J	7	518688						

Equipment

HES Unit #	Distance-1 way	HES Unit #	Distance-1 way	HES Unit #	Distance-1 way	HES Unit #	Distance-1 way

Job Hours

Date	On Location Hours	Operating Hours	Date	On Location Hours	Operating Hours	Date	On Location Hours	Operating Hours
6-17-2012	7	1.5						
TOTAL			Total is the sum of each column separately					

Job

Job Times

Formation Name	Top	Bottom	Called Out	Date	Time	Time Zone
Formation Depth (MD)			On Location	17 - Jun - 2012	06:00	MST
Form Type		BHST	Job Started	17 - Jun - 2012	11:35	MST
Job depth MD	8590. ft	Job Depth TVD	Job Completed	17 - Jun - 2012	13:10	MST
Water Depth		Wk Ht Above Floor	Departed Loc	17 - Jun - 2012	14:25	MST
Perforation Depth (MD)	From	To				

Well Data

Description	New / Used	Max pressure psig	Size in	ID in	Weight lbm/ft	Thread	Grade	Top MD ft	Bottom MD ft	Top TVD ft	Bottom TVD ft
OPEN HOLE				6.125				6700.	8590.		
INTERMEDIATE CASING	Unknown		7.	6.276	26.		L-80	.	6700.		
PRODCUTION CASING	Unknown		4.5	.	13.5		N-80	.	8590.		

Sales/Rental/3rd Party (HES)

Description	Qty	Qty uom	Depth	Supplier
MILEAGE FOR CEMENTING CREW,ZI	160	MI		
ZI FUEL SURCHG-CARS/PICKUPS<1 1/2TON	160	MI		
PLUG,CMTG,BOT,4 1/2,HWE,3.65 MIN/4.14 MA	1	EA		
PLUG,CMTG,TOP,4 1/2,HWE,3.65 MIN/4.14 MA	1	EA		

Tools and Accessories

Type	Size	Qty	Make	Depth	Type	Size	Qty	Make	Depth	Type	Size	Qty	Make
Guide Shoe				8590	Packer					Top Plug			
Float Shoe					Bridge Plug					Bottom Plug			
Float Collar				8588	Retainer					SSR plug set			
Insert Float										Plug Container			
Stage Tool										Centralizers			

Miscellaneous Materials

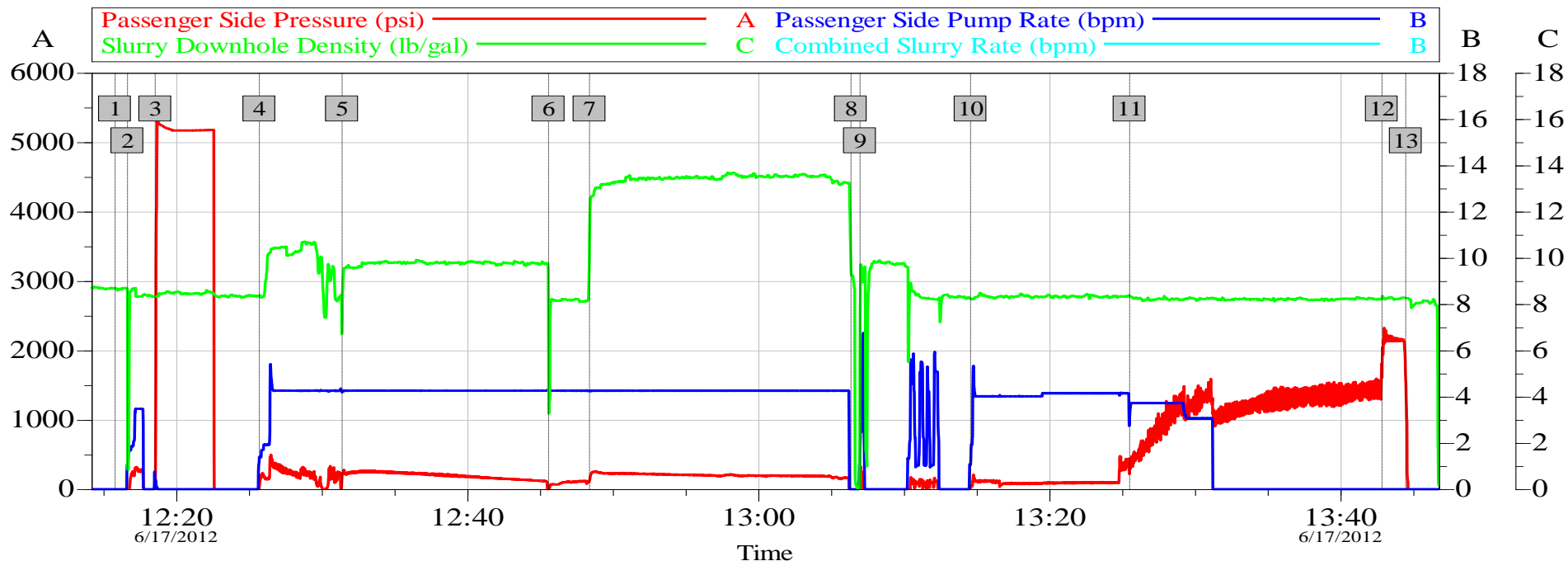
Fluid Data

Stage/Plug #: 1									
Fluid #	Stage Type	Fluid Name	Qty	Qty uom	Mixing Density lbm/gal	Yield ft ³ /sk	Mix Fluid Gal/sk	Rate bbl/min	Total Mix Fluid Gal/sk
1	TUNED SPACER III	TUNED SPACER III - SBM (483826)	20.00	bbl	10.	6.23	42.72	.0	
	0.125 gal/bbl	D-AIR 3000L, 5 GAL PAIL (101007444)							
	63.5 lbm/bbl	BARITE, BULK (100003681)							
	38.32 gal/bbl	FRESH WATER							
	0.125 gal/bbl	MUSOL(R) A, BULK (100003696)							
	0.125 gal/bbl	SEM-7, 55 GAL DRUM (100001626)							
2	Mud Recovery Spacer		75.00	bbl	10.	.0	.0	.0	
	47.5 lbm/bbl	BARITE, BULK (100003681)							
	12.5 lbm/bbl	HALLIBURTON GEL, 50 LB SK (100064040)							
	0.05 gal/bbl	ANHIB II (100003821)							
3	MUD FLUSH	MUD FLUSH - ZI - SBM (13383)	10.00	bbl	8.4	.0	.0	.0	
4	LifeCem	LIFECM (TM) CEMENT (532084)	250.0	sacks	13.5	1.73	7.46		7.46
5	KCl Displacement		122.00	bbl	8.4	.0	.0	5.0	
	7.15 lbm/bbl	POTASSIUM CHLORIDE 7% (100001585)							
	42 gal/bbl	WATER - FRESH - GAL (24047)							
Calculated Values		Pressures		Volumes					
Displacement		Shut In: Instant		Lost Returns		Cement Slurry		Pad	
Top Of Cement		5 Min		Cement Returns		Actual Displacement		Treatment	
Frac Gradient		15 Min		Spacers		Load and Breakdown		Total Job	
Rates									
Circulating		Mixing		Displacement		Avg. Job			
Cement Left In Pipe	Amount	0 ft	Reason	Shoe Joint					
Frac Ring # 1 @	ID	Frac ring # 2 @	ID	Frac Ring # 3 @	ID	Frac Ring # 4 @	ID		
The Information Stated Herein Is Correct				Customer Representative Signature					

HALLIBURTON

Data Acquisition

Quicksilver Production Simoes 22-30



Global Event Log

1	start job	12:15:48	2	Pump Spacer 1	12:16:39	3	test lines	12:18:34
4	Pump Spacer	12:25:43	5	Pump Spacer 2	12:31:24	6	Pump Spacer	12:45:35
7	Pump Cement	12:48:24	8	Drop Plug	13:06:22	9	Clean Lines	13:06:59
10	Pump Displacement	13:14:35	11	Slow Rate	13:25:31	12	Bump Plug	13:42:51
13	Check Floats	13:44:29						

Customer: Quicksilver
Well Description: Simoes 22-30

Job Date: 17-Jun-2012
Supervisor Cody Slaugh

Sales Order #: 9594107
Operator Ken Estep

OptiCem v6.4.10
17-Jun-12 14:39

HALLIBURTON

Lab Data

Cementing Rockies, Vernal

LAB RESULTS - Primary

Job Information

Request/Slurry	246743/1	Rig Name	DHS DRILLING #6	Date	14/JUN/2012
Submitted By	Charli Brown	Job Type	Production Casing	Bulk Plant	Vernal
Customer	Quicksilver Resources Inc.	Location	Rio Blanco	Well	Simoes 22-30

Well Information

Casing/Liner Size	4 1/2"	Depth MD	8480 ft	BHST	190 F
Hole Size	6 1/8"	Depth TVD	0 ft	BHCT	141 F

Drilling Fluid Information

Mud Supplier Name	Mud Trade Name	Density
-------------------	----------------	---------

Cement Information - Primary Design

Conc	UOM	Cement/Additive	Sample Type	Sample Date	Lot No.	Cement Properties	
						Slurry Density	13.50 PPG
						Slurry Yield	1.73 ft3/sk
100.00	% BWOC	Cement Blend	Bulk	Jun 14, 2012		Water Requirement	7.47 GPS
7.47	gal/sack	Fresh Water	Lab	Mar 08, 2012	3/8/12	Total Mix Fluid	7.47 GPS

Operation Test Results Request ID 246743/1

Thickening Time, Request Test ID:2606165

Temp (°F)	Pressure (psi)	Reached in (min)	Start BC	30 Bc (hh:mm)	50 Bc (hh:mm)	70 Bc (hh:mm)	100 Bc (hh:mm)
141	5,360	33	20	02:26	02:35	02:43	02:43

Mixability (0 - 5) - 0 is not mixable, Request Test ID:2606173

Mixability rating (0 - 5)

4

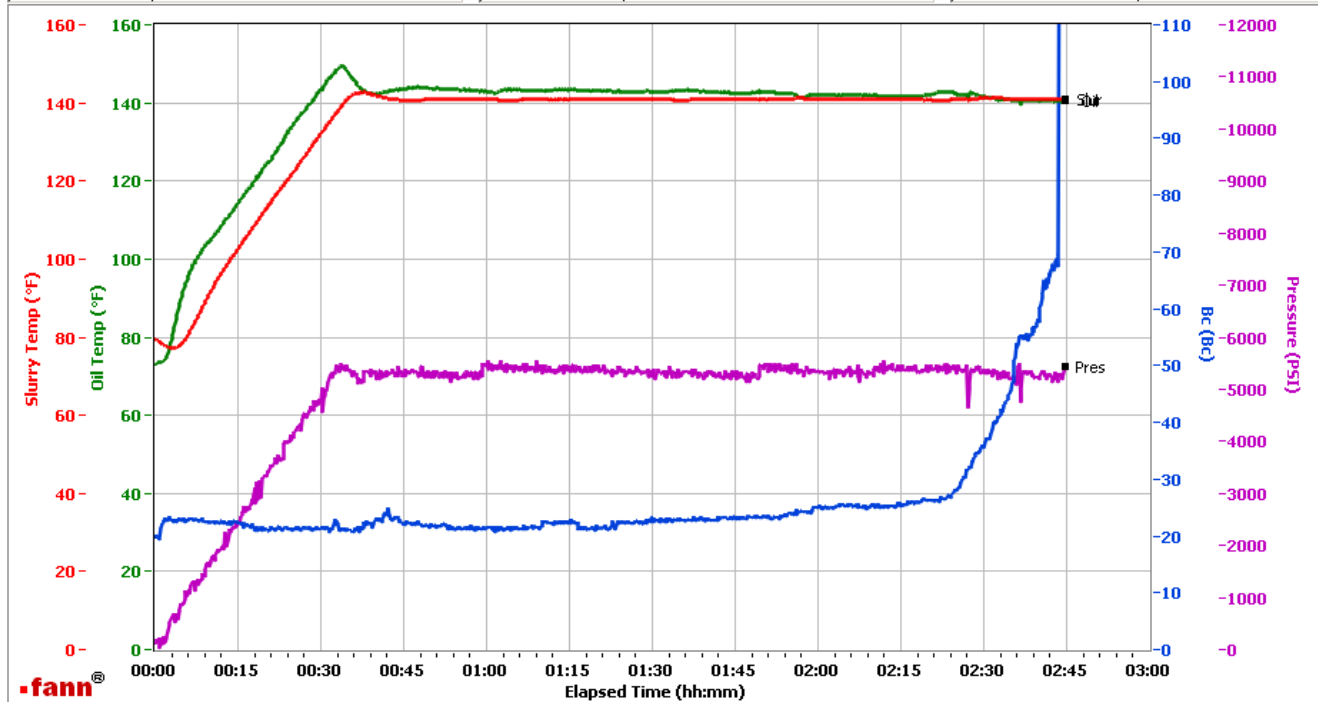
HALLIBURTON

Vernal

Fields	Values
Project Name	Quicksilver 246743-1
Test ID	246743-1
Request ID	HPHT 5
Tested by	vmc
Customer	Quicksilver
Well No	Simoes 22-30
Rig	6
Casing/Liner Size	4.5

Fields	Values
Job Type	Production Primary
Cement Type	V
Cement Weight	Light Weight
Test Date	06/15/12
Test Time	07:29 AM
Temp. Units	degF
Pressure Units	PSI
SW Version	2.0.2.206

Events	Results
30.00 Bc	02h:26m
50.00 Bc	02h:35m
70.00 Bc	02h:43m
100.00 Bc	02h:43m
00h:30m	21.55
01h:00m	21.43
01h:30m	23.13
02h:00m	24.86



Data File O:\HPHT Data Files\Vernal Consistometer #5\Quicksilver 246743-1.tdms

Comments 50/50, 0.15% HR-601, 13.5 Den, 1.73 Yd