

T8S, R100W, 6th P.M.

R 100
W 99

Encana OIL & GAS (USA) INC.

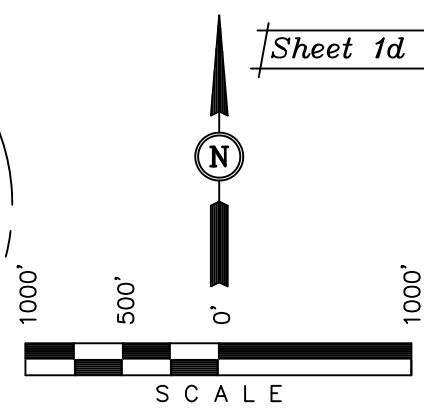
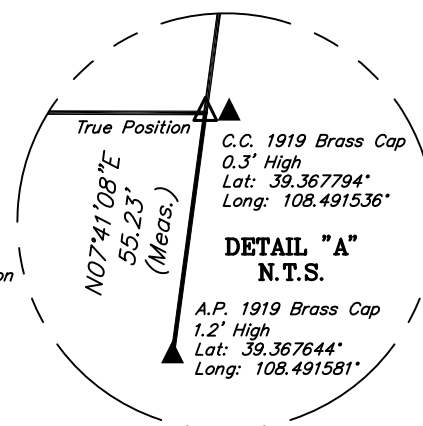
Well location, DHS7C-13 012 8100 (SURFACE LOCATION), located as shown in LOT 4 of Section 12, T8S, R100W, 6th P.M., Garfield County, Colorado.

VERTICAL CONTROL DATUM: NAVD88

[Derived from: N.G.S. O.P.U.S. Solution

NOTE:
SEE SHEET 6A FOR EXISTING IMPROVEMENTS
WITHIN 400' OF THE PROPOSED WELL
DISTURBANCE.

Sheet 1d of 10



CERTIFICATE

THIS IS TO CERTIFY THAT THE ABOVE PLAT WAS PREPARED AND LOCATION AS SHOWN WAS STAKED ON THE GROUND FROM FIELD NOTES OF ACTUAL SURVEYS MADE BY ME OR UNDER MY SUPERVISION AND THAT THE SAME ARE TRUE AND CORRECT TO THE BEST OF MY KNOWLEDGE AND BELIEF.

REGISTERED LAND SURVEYOR
REGISTRATION NO. 17492
STATE OF COLORADO
08-01-12

UINTAH ENGINEERING & LAND SURVEYING
85 SOUTH 200 EAST - VERNAL, UTAH 84078
(435) 789-1017

PDOP = 1.3

LEGEND:

└─┘ = 90° SYMBOL

● = PROPOSED WELL HEAD.

▲ = SECTION CORNERS LOCATED

△ = SECTION CORNERS
RE-ESTAB.

(Not Set on Ground)

NAD 83 (START OF PRODUCING INTERVAL)

LATITUDE = 39°22'07.99" (39.368886)

LONGITUDE = 108°30'07.01" (108.501947)

NAD 27 (START OF PRODUCING INTERVAL)

LATITUDE = 39°22'08.07" (39.368908)

LONGITUDE = 108°30'04.68" (108.501300)

NAD 83 (SURFACE LOCATION)

LATITUDE = 39°22'14.64" (39.370733)

LONGITUDE = 108°29'34.87" (108.493019)

NAD 27 (SURFACE LOCATION)

LATITUDE = 39°22'14.72" (39.370756)

LONGITUDE = 108°29'32.54" (108.492372)

SCALE
1" = 1000'

DATE SURVEYED:
04-14-12

DATE DRAWN:
06-01-12

PARTY
B.J. T.M. T.B.

REFERENCES
G.L.O. PLAT

WEATHER
COOL

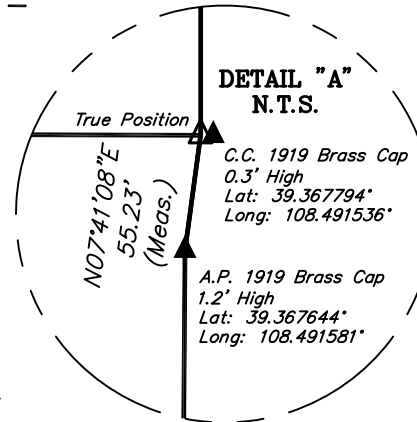
FILE
Encana OIL & GAS (USA) INC.

Encana OIL & GAS (USA) INC.

Well location, DHS7C-13 012 8100 (TARGET BOTTOM HOLE), located as shown in the SW 1/4 SW 1/4 of Section 13, T8S, R100W, 6th P.M., Garfield County, Colorado.

VERTICAL CONTROL DATUM: NAVD88

[Derived from: N.G.S. O.P.U.S. Solution]



Sheet 1e of 10

LEGEND:

- └─┘ = 90° SYMBOL
- = PROPOSED WELL HEAD.
- ▲ = SECTION CORNERS LOCATED.
- △ = SECTION CORNERS RE-ESTAB. (Not Set on Ground)



CERTIFICATE

THIS IS TO CERTIFY THAT THE ABOVE PLAT WAS PREPARED AND LOCATION AS SHOWN WAS STAKED ON THE GROUND FROM FIELD NOTES OF ACTUAL SURVEYS MADE BY ME OR UNDER MY SUPERVISION AND THAT THE SAME ARE TRUE AND CORRECT TO THE BEST OF MY KNOWLEDGE AND BELIEF.

REGISTERED LAND SURVEYOR
REGISTRATION NO. 17492
STATE OF COLORADO
08-01-12

UINTAH ENGINEERING & LAND SURVEYING
85 SOUTH 200 EAST - VERNAL, UTAH 84078
(435) 789-1017

SCALE 1" = 1000'	DATE SURVEYED: 04-14-12	DATE DRAWN: 06-01-12
PARTY B.J. T.M. T.B.	REFERENCES G.L.O. PLAT	
WEATHER COOL	FILE Encana OIL & GAS (USA) INC.	

T8S, R100W, 6th P.M.

S89°51'09"E - 3607.30' (Meas. To True)
S89°51'09"E - 3612.68' (Meas. To C.C.)

1919 Brass Cap
0.4' High
Lat: 39.367819°
Long: 108.504308°

GARFIELD COUNTY
MESA COUNTY

LOT 1

COCO 013423

LOT 2

A.P. 3 TR 46
1919 Brass Cap
0.2' High
Lat: 39.360553°
Long: 108.491667°

COCO 012750

13

LOT 3

NOTE:
THE TARGET BOTTOM HOLE BEARS
S00°14'18"W 5003.73' FROM THE START OF
PRODUCING INTERVAL WHICH IS LOCATED IN
THE SW 1/4 SW 1/4 OF SECTION 12, T8S,
R100W, 6th P.M. AT A DISTANCE OF 390'
FSL 667' FWL.

NOTE:
THE LEASE LINE IS LOCATED NORTH
1981' FROM THE TARGET BOTTOM HOLE.

DHS7C-13 012 8100
TARGET BOTTOM HOLE

LOT 4

1919 Brass Cap
1.2' High
Lat: 39.353372°
Long: 108.504361°

C.C. 1919 Brass Cap
0.6' High
Lat: 39.353342°
Long: 108.490792°

W.C. 1919 Brass Cap
1.9' High
Lat: 39.353358°
Long: 108.495089°

DETAIL "A"
N.T.S.

SE Cor. Sec. 36
A.P. Re-Established Using
Grant Boundary Method

W.C. NE Cor. Sec. 1
1956 B.L.M. Brass Cap
2.2' High
Lat: 39.309900°
Long: 108.487789°

True
Position

N89°59'17"W 1798.25' (Meas.)
N89°24'18"W 1798.25' (Meas.)
N 1/4 Cor. Sec. 6
1930 G.L.O. Brass Cap
1.0' High
Lat: 39.309847°
Long: 108.497250°

NAD 83 (TARGET BOTTOM HOLE)	
LATITUDE = 39°21'18.55" (39.355153)	
LONGITUDE = 108°30'07.27" (108.502019)	
NAD 27 (TARGET BOTTOM HOLE)	
LATITUDE = 39°21'18.63" (39.355175)	
LONGITUDE = 108°30'04.94" (108.501372)	

SEE DETAIL "A" @ LEFT