

T8S, R100W, 6th P.M.

R 100
W 99

Encana OIL & GAS (USA) INC.

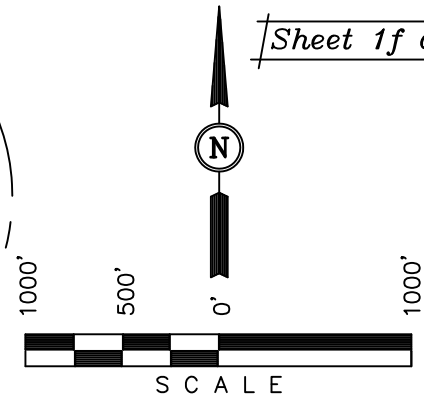
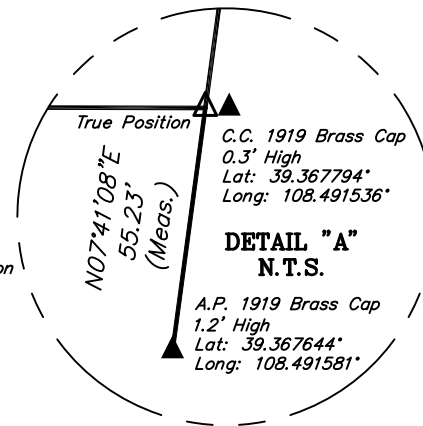
Well location, DHS4C-13 012 8100 (SURFACE LOCATION), located as shown in LOT 4 of Section 12, T8S, R100W, 6th P.M., Garfield County, Colorado.

VERTICAL CONTROL DATUM: NAVD88

[Derived from: N.G.S. O.P.U.S. Solution

NOTE:
SEE SHEET 6A FOR EXISTING IMPROVEMENTS
WITHIN 400' OF THE PROPOSED WELL
DISTURBANCE.

Sheet 1f of 10



CERTIFICATE

THIS IS TO CERTIFY THAT THE ABOVE PLAT WAS PREPARED AND LOCATION AS SHOWN WAS STAKED ON THE GROUND FROM FIELD NOTES OF ACTUAL SURVEYS MADE BY ME OR UNDER MY SUPERVISION AND THAT THE SAME ARE TRUE AND CORRECT TO THE BEST OF MY KNOWLEDGE AND BELIEF.

REGISTERED LAND SURVEYOR
REGISTRATION NO. 17492
STATE OF COLORADO
08-01-12

UINTAH ENGINEERING & LAND SURVEYING
85 SOUTH 200 EAST - VERNAL, UTAH 84078
(435) 789-1017

PDOP = 1.3

SCALE 1" = 1000'	DATE SURVEYED: 04-14-12	DATE DRAWN: 06-01-12
PARTY B.J. T.M. T.B.	REFERENCES G.L.O. PLAT	
WEATHER COOL	FILE Encana OIL & GAS (USA) INC.	

LEGEND:

└─┘ = 90° SYMBOL

● = PROPOSED WELL HEAD.

▲ = SECTION CORNERS LOCATED

△ = SECTION CORNERS
RE-ESTAB.

(Not Set on Ground)

NAD 83 (START OF PRODUCING INTERVAL)	NAD 83 (SURFACE LOCATION)
LATITUDE = 39°22'08.00" (39.368889)	LATITUDE = 39°22'14.55" (39.370708)
LONGITUDE = 108°29'50.20" (108.497278)	LONGITUDE = 108°29'34.44" (108.492900)
NAD 27 (START OF PRODUCING INTERVAL)	NAD 27 (SURFACE LOCATION)
LATITUDE = 39°22'08.08" (39.368911)	LATITUDE = 39°22'14.63" (39.370731)
LONGITUDE = 108°30'47.87" (108.513297)	LONGITUDE = 108°29'32.11" (108.492253)

N00°10'29"E - 2637.73' (Meas.)

1919 Brass Cap
0.6' High
Lat: 39.382339°
Long: 108.504258°

COCO 012653

NOTE:
THE PROPOSED BOTTOM HOLE FOR THIS
WELL IS LOCATED IN THE SE 1/4 SW 1/4
OF SECTION 13, T8S, R100W, 6th P.M. AT A
DISTANCE OF 650' FSL 1980' FWL. IT BEARS
S00°15'09"W 5007.19' FROM THE START OF
PRODUCING INTERVAL.

NOTE:
THE PROPERTY LINE IS LOCATED NORTH
259' FROM THE PROPOSED WELL HEAD.

THE LEASE LINE IS LOCATED NORTH
928' FROM THE START OF PRODUCING
INTERVAL.

C.C. 1919 Brass Cap
2.3' High
Lat: 39.382344°
Long: 108.489022°

LOT 1

LOT 2

S89°36'50"E - 3955.45' (Meas. To True)
S89°36'50"E - 3949.64' (Meas. To C.C.)

1919 Brass Cap
2.1' High
Lat: 39.375097°
Long: 108.504283°

12

C.C. 1919 Brass Cap
0.6' High
Lat: 39.375025°
Long: 108.490319°

LOT 3

DHS4C-13 012 8100

Elev. Ungraded Ground = 6722.8'

Elev. Graded Ground = 6724.7'

DHS4C-13 012 8100
START OF PRODUCING
INTERVAL

LOT 4

1919 Brass Cap
0.4' High
Lat: 39.367819°
Long: 108.504308°

1987'

394'

S61°51'27"W
1404.77'

1060'

1657'

SEE DETAIL "A"
@ UPPER RIGHT

N89°51'09"W - 3607.30' (Meas. To True)
N89°51'09"W - 3612.68' (Meas. To C.C.)

S07°41'10"W - 2551.49' (Meas.)
S08°04'10"W
139.60' (Meas.)

True Position

